

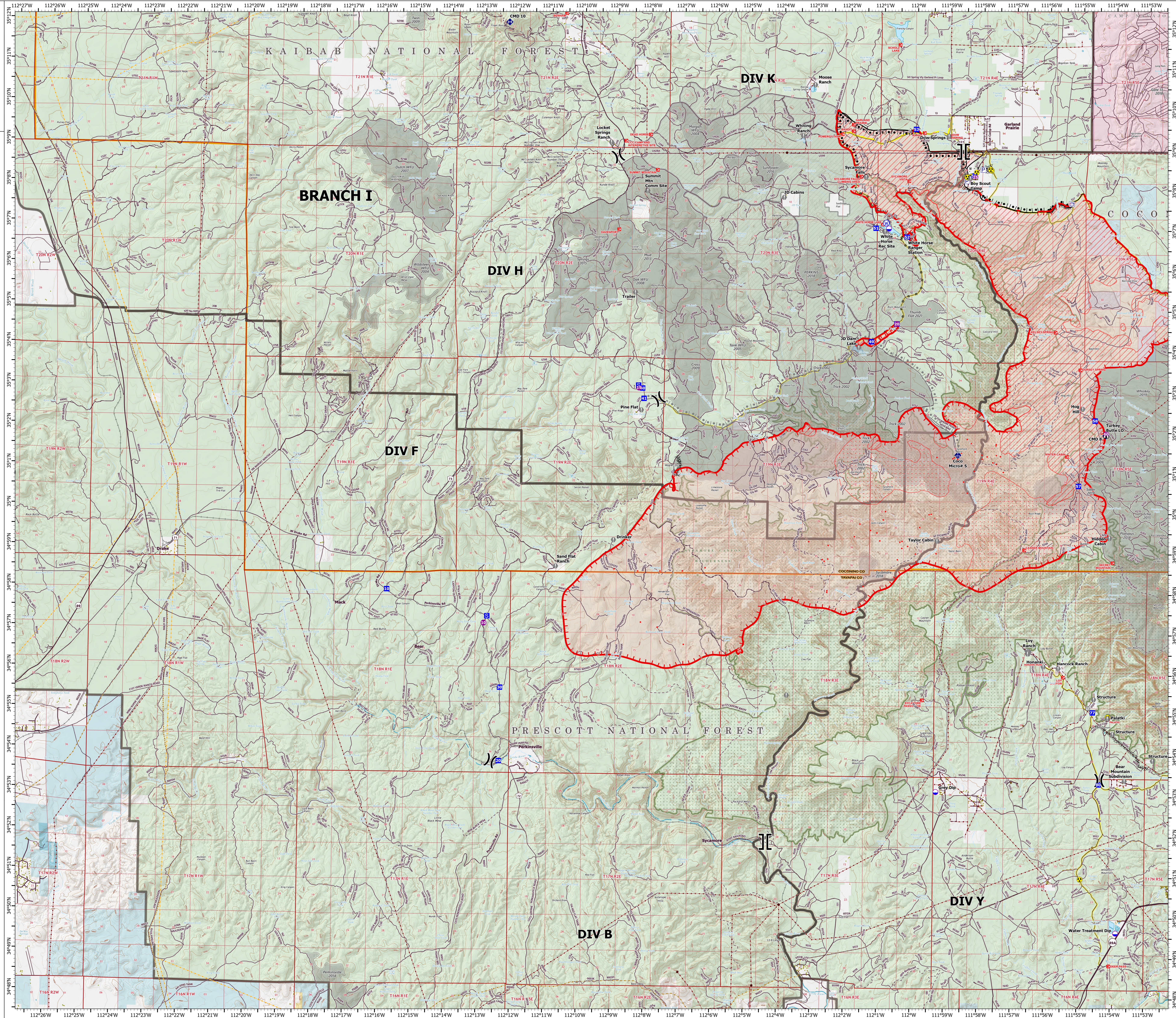
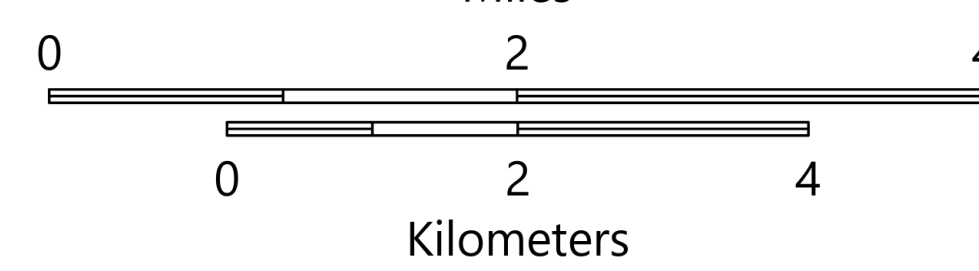
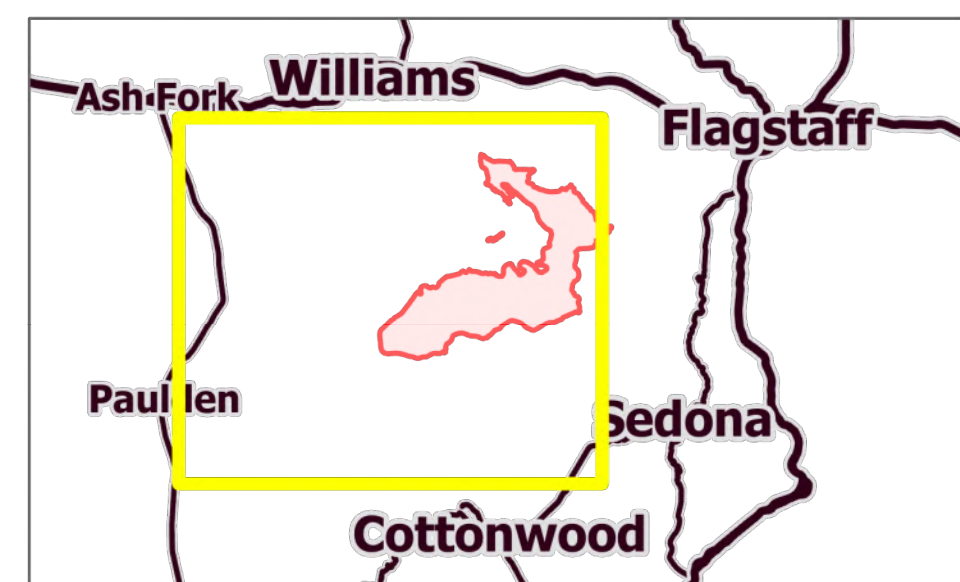
OPERATIONS

BRANCH I

Rafael
AZ-PNF-863
6/27/2021

62,376 acres at 6/26/21 2148 hrs

- Helispot
- Dip Site
- ⌋ Division Break
- ⌋ Branch Break
- Drop Point
- Ⓜ Staging Area
- Ⓜ Lookout
- Value at Risk
- Ⓜ Gate
- Ⓜ Mobile Weather Unit
- Ⓜ Repeater
- Ⓜ Safety Zone
- Ⓜ Hazard
- Ⓜ Water Source
- Ⓜ Pump
- Ⓜ Water Tank
- IR Isolated Heat Source
- Structure
- Ⓜ Completed Burnout
- Ⓜ Completed Dozer Line
- Ⓜ Completed Hand Line
- Ⓜ Completed Road as Line
- Ⓜ Planned Burnout
- Ⓜ Planned Dozer Line
- Ⓜ Planned Road as Line
- Ⓜ Planned Secondary Line
- Ⓜ Other
- Ⓜ Fire Edge
- Ⓜ Contained Line
- Ⓜ Secondary Highway
- Ⓜ Paved Roads
- Ⓜ Dirt (Not Paved)
- Ⓜ USFS Road
- Ⓜ Access Road
- Ⓜ Trail
- Ⓜ Railroad
- Ⓜ IR Heat Perimeter
- Ⓜ IR Intense Heat
- Ⓜ IR Scattered Heat
- Ⓜ Wildfire Daily Fire Perimeter
- Substation
- Ⓜ Transmission Line
- Ⓜ Natural Gas Liquid Pipeline
- Oil and Natural Gas Well
- Ⓜ Oil and Natural Gas Pipeline
- Ⓜ Fire History
- Ⓜ Administrative FS Boundary
- Ⓜ Federal Wilderness Boundary
- Ⓜ County Boundary
- Ⓜ Bureau of Land Management
- Ⓜ Military
- Ⓜ Private
- Ⓜ State
- Ⓜ State Wildlife Area
- Ⓜ US Forest Service



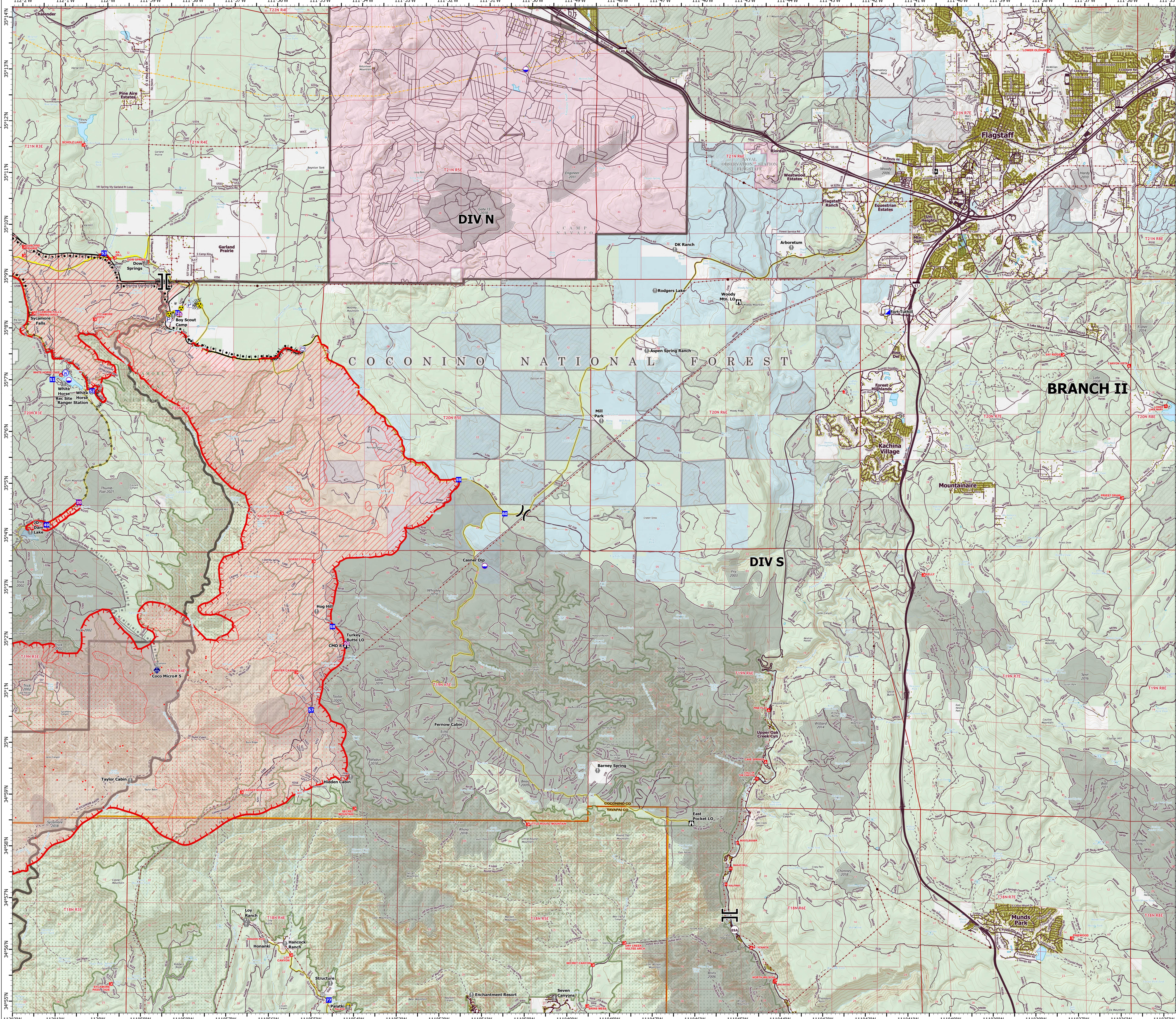
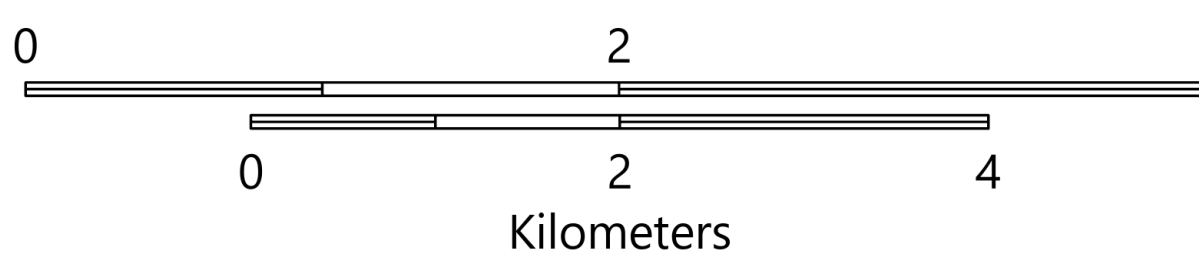
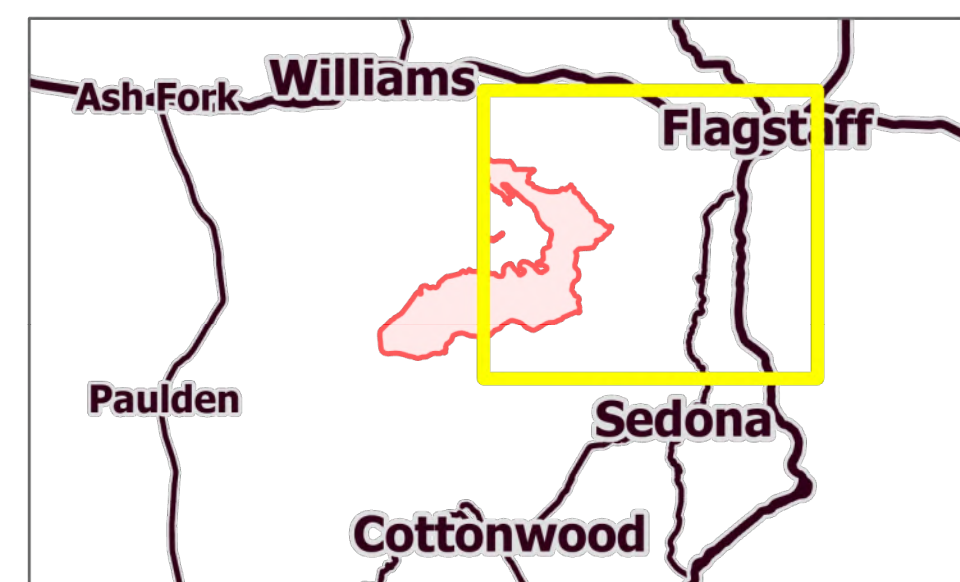
OPERATIONS

BRANCH II

Rafael
AZ-PNF-863
6/27/2021

62,376 acres at 6/26/21 2148 hrs

- Helispot
- Dip Site
- ⌵ Division Break
- ⌵ Branch Break
- ⌵ Incident Command Post
- Drop Point
- ⌵ Lookout
- Value at Risk
- Gate
- Mobile Weather Unit
- Repeater
- Safety Zone
- Hazard
- Water Source
- Pump
- Water Tank
- IR Isolated Heat Source
- Structure
- ⌵ Completed Burnout
- ⌵ Completed Dozer Line
- ⌵ Completed Hand Line
- ⌵ Completed Road as Line
- ⌵ Planned Burnout
- ⌵ Planned Secondary Line
- ⌵ Other
- Fire Edge
- Contained Line
- Primary Highway
- Secondary Highway
- Paved Roads
- Dirt (Not Paved)
- USFS Road
- Access Road
- Trail
- Tunnel; Bridge
- Railroad
- Runway
- IR Heat Perimeter
- IR Intense Heat
- IR Scattered Heat
- Wildfire Daily Fire Perimeter
- Substation
- Transmission Line
- Natural Gas Liquid Pipeline
- Oil and Natural Gas Well
- Oil and Natural Gas Pipeline
- Fire History
- Administrative FS Boundary
- Federal Wilderness Boundary
- County Boundary
- Local or State Parks
- Military
- Private
- State
- State Wildlife Area
- US Forest Service
- Fuel Treatment



OPERATIONS

BRANCH III

Rafael
AZ-PNF-863
6/27/2021

62,376 acres at 6/26/21 2148 hrs

- Helispot
- Dip Site
- ⌋ Division Break
- ⌋ Branch Break
- Drop Point
- Ⓜ Camp
- Ⓜ Lookout
- Ⓜ Value at Risk
- Ⓜ Gate
- Ⓜ Mobile Weather Unit
- Ⓜ Hazard
- IR Isolated Heat Source
- Structure
- Completed Dozer Line
- Completed Hand Line
- Planned Dozer Line
- Other
- Fire Edge
- Primary Highway
- Secondary Highway
- Paved Roads
- Dirt (Not Paved)
- USFS Road
- Access Road
- Trail
- Tunnel; Bridge
- Railroad
- Runway
- IR Heat Perimeter
- IR Intense Heat
- IR Scattered Heat
- Wildfire Daily Fire Perimeter
- Substation
- Transmission Line
- Natural Gas Liquid Pipeline
- Oil and Natural Gas Well
- Oil and Natural Gas Pipeline
- Fire History
- Administrative FS Boundary
- Federal Wilderness Boundary
- County Boundary
- County
- Indian Lands
- Local or State Parks
- National Park Service
- Other Federal
- Private
- State
- State Wildlife Area
- US Forest Service
- Fuel Treatment

