

# OPERATIONS

DIV B

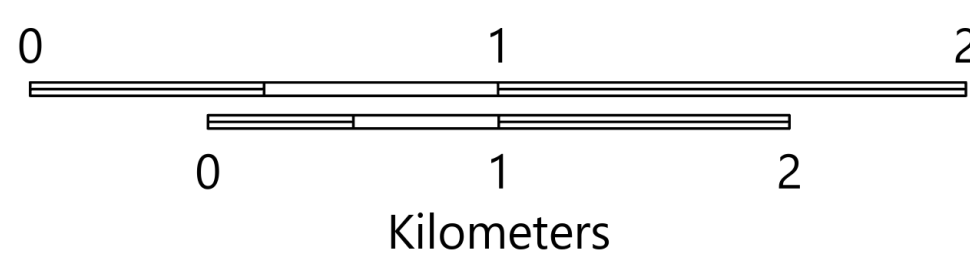
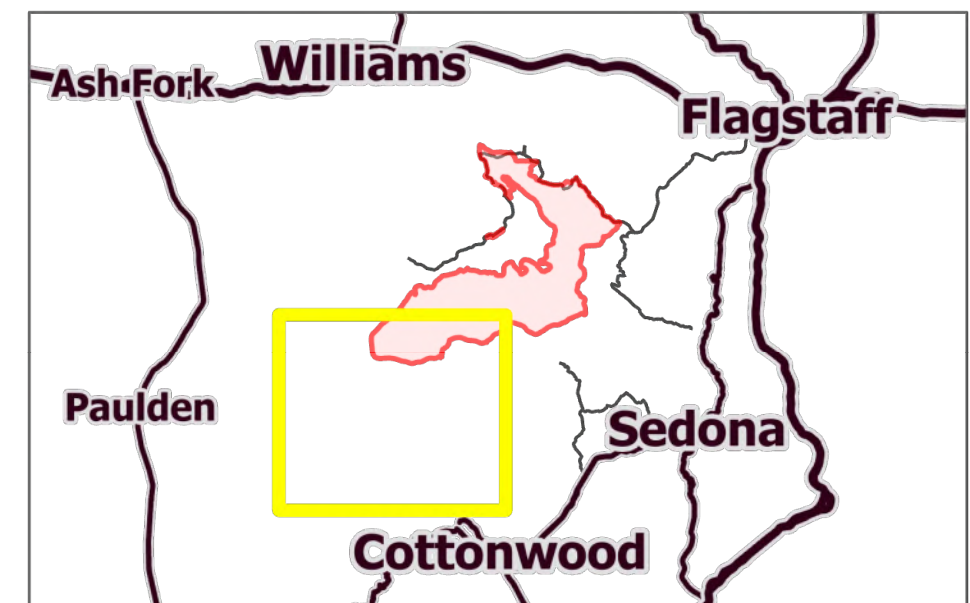
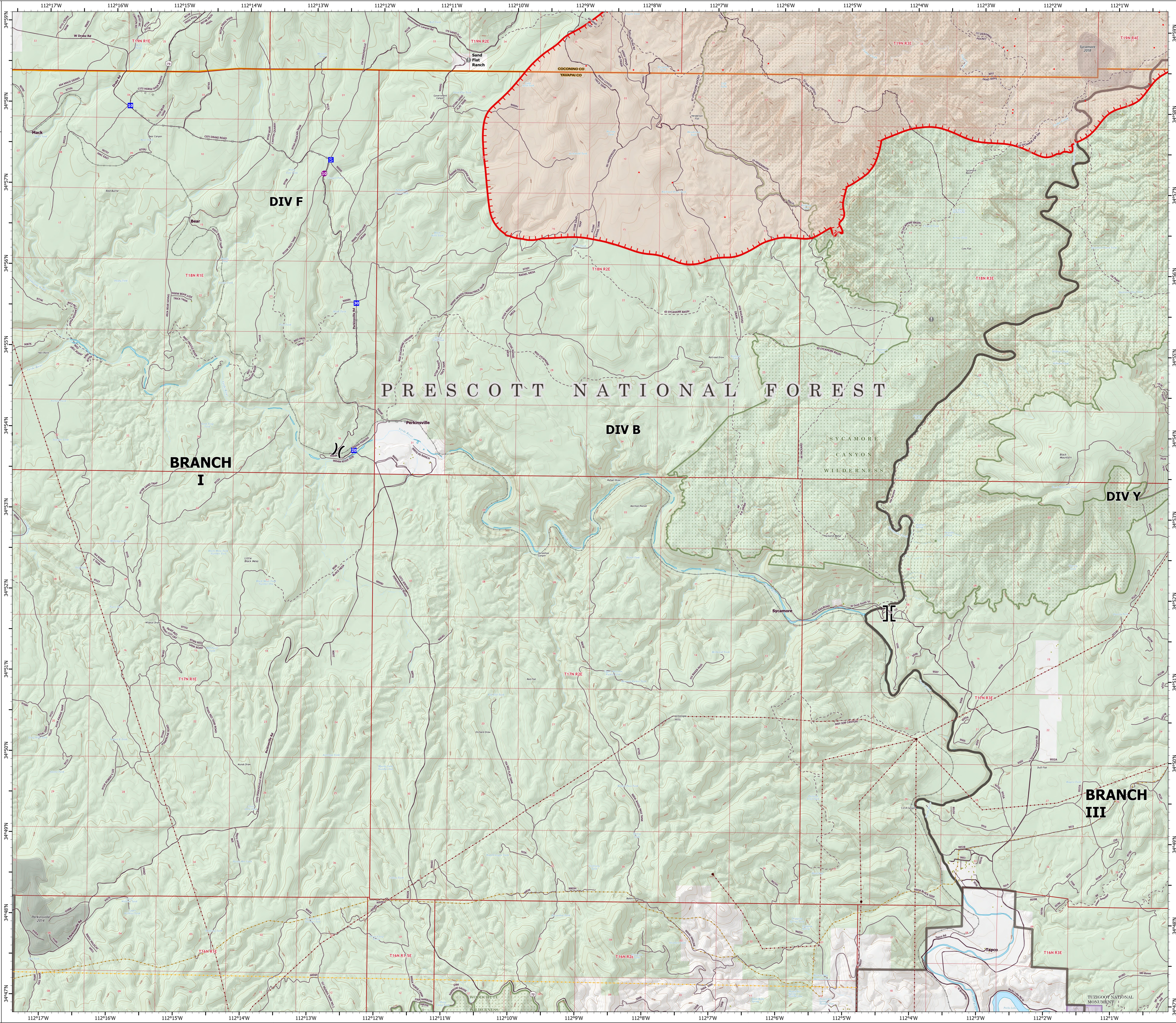
Rafael

AZ-PNF-863

6/27/2021

62,376 acres at 6/26/21 2148 hrs

- Helispot
- ( ) Division Break
- ⌋ Branch Break
- Drop Point
- Staging Area
- Value at Risk
- IR Isolated Heat Source
- Structure
- Planned Road as Line
- Fire Edge
- Paved Roads
- Dirt (Not Paved)
- USFS Road
- Trail
- Railroad
- IR Heat Perimeter
- Wildfire Daily Fire Perimeter
- Substation
- Transmission Line
- Natural Gas Liquid Pipeline
- Oil and Natural Gas Pipeline
- Fire History
- Administrative FS Boundary
- Federal Wilderness Boundary
- County Boundary
- National Park Service
- Private
- State
- US Forest Service



# OPERATIONS

DIV F

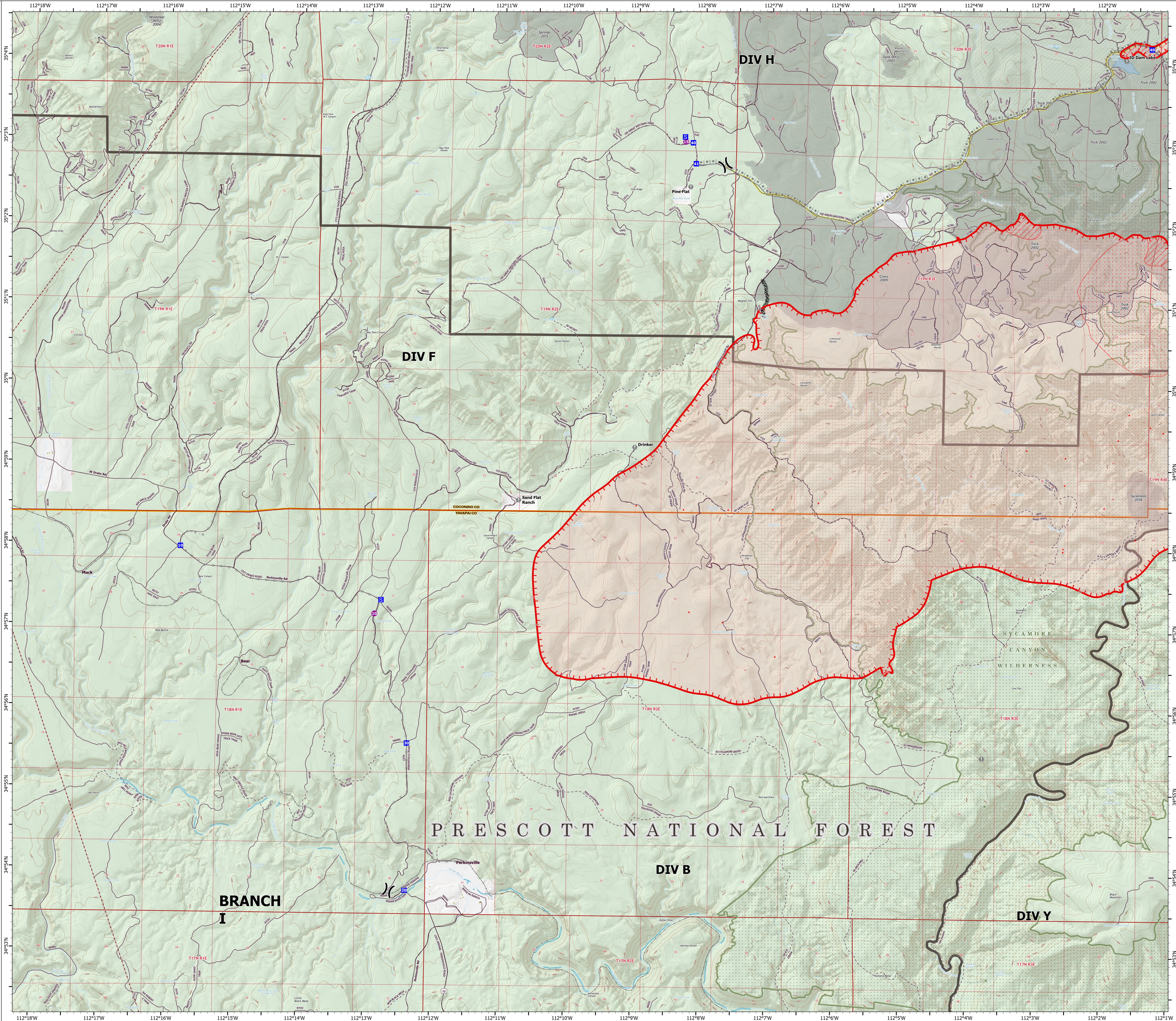
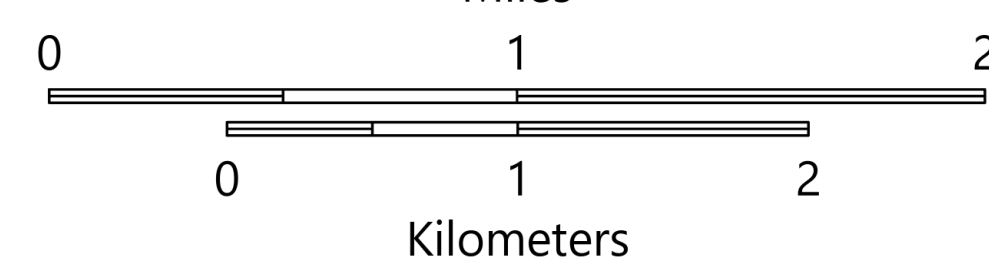
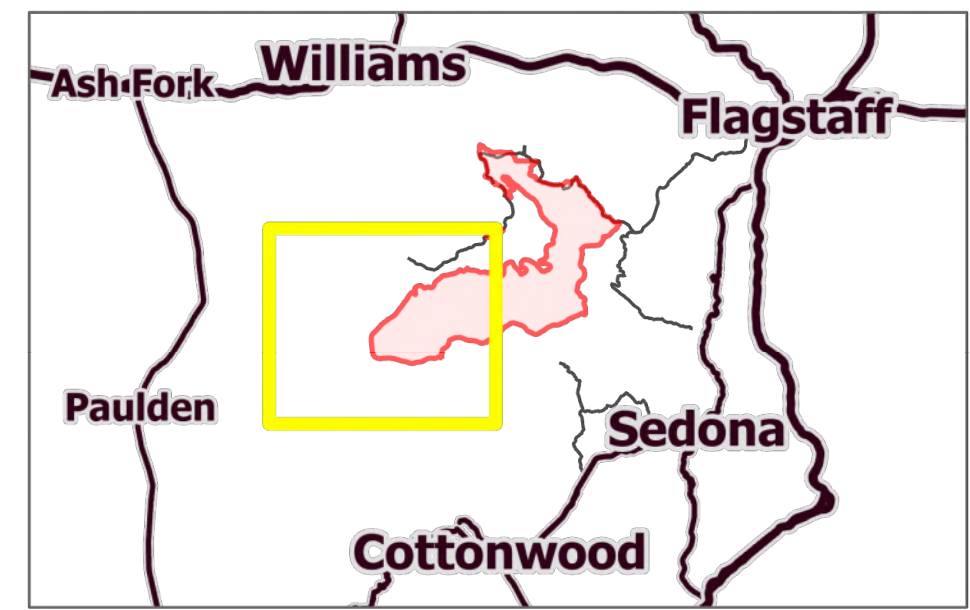
Rafael

AZ-PNF-863

6/27/2021

62,376 acres at 6/26/21 2148 hrs

- Helispot
- ( ) Division Break
- Drop Point
- Staging Area
- Value at Risk
- IR Isolated Heat Source
- Structure
- Completed Dozer Line
- Completed Road as Line
- Planned Burnout
- Planned Road as Line
- Fire Edge
- Paved Roads
- Dirt (Not Paved)
- USFS Road
- Access Road
- Trail
- Railroad
- IR Heat Perimeter
- IR Intense Heat
- IR Scattered Heat
- Wildfire Daily Fire Perimeter
- Transmission Line
- Fire History
- Administrative FS Boundary
- Federal Wilderness Boundary
- County Boundary
- Private
- US Forest Service



# OPERATIONS

DIV H

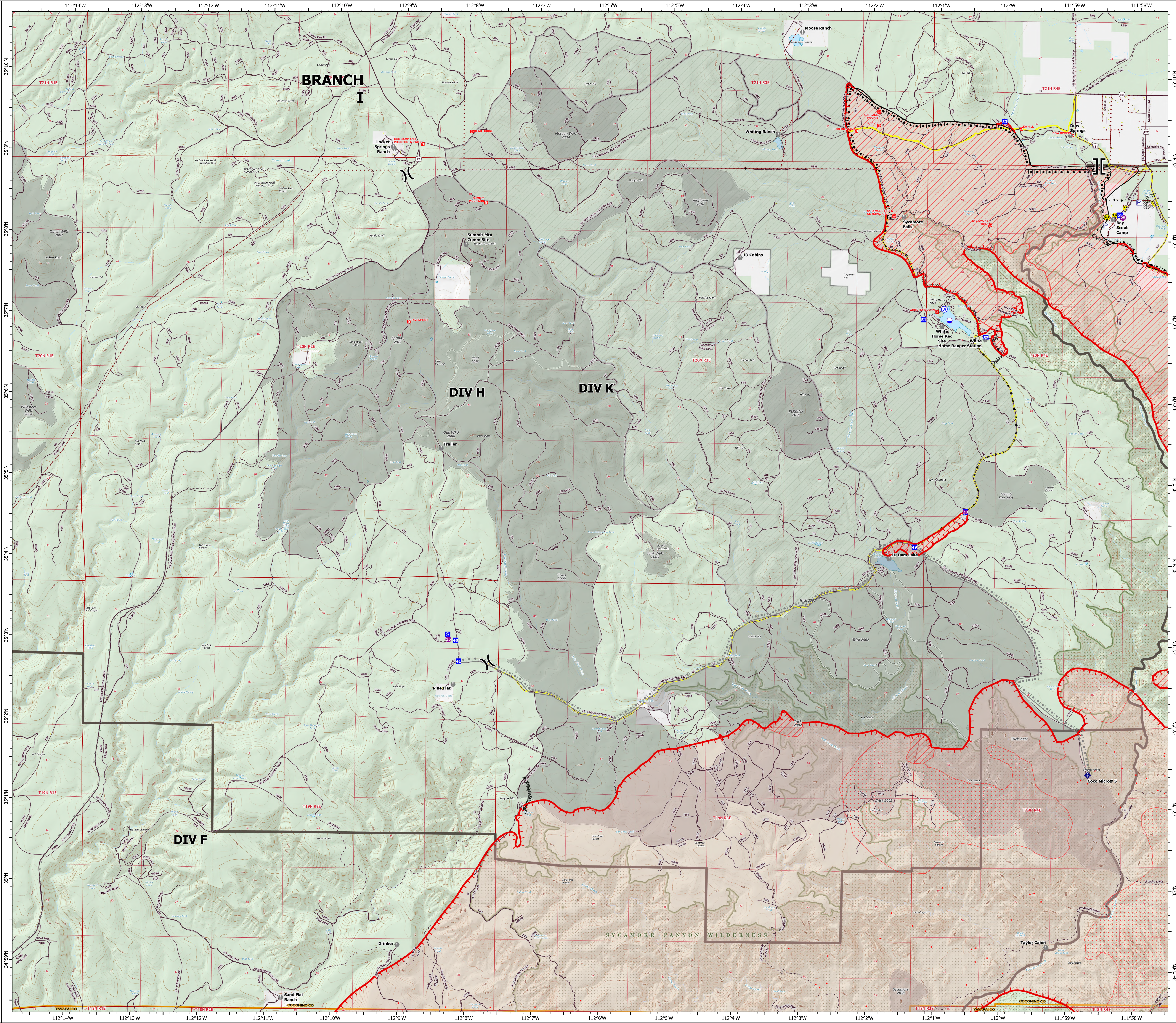
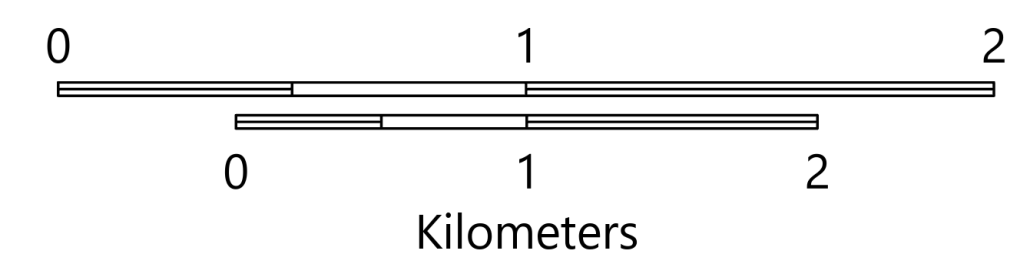
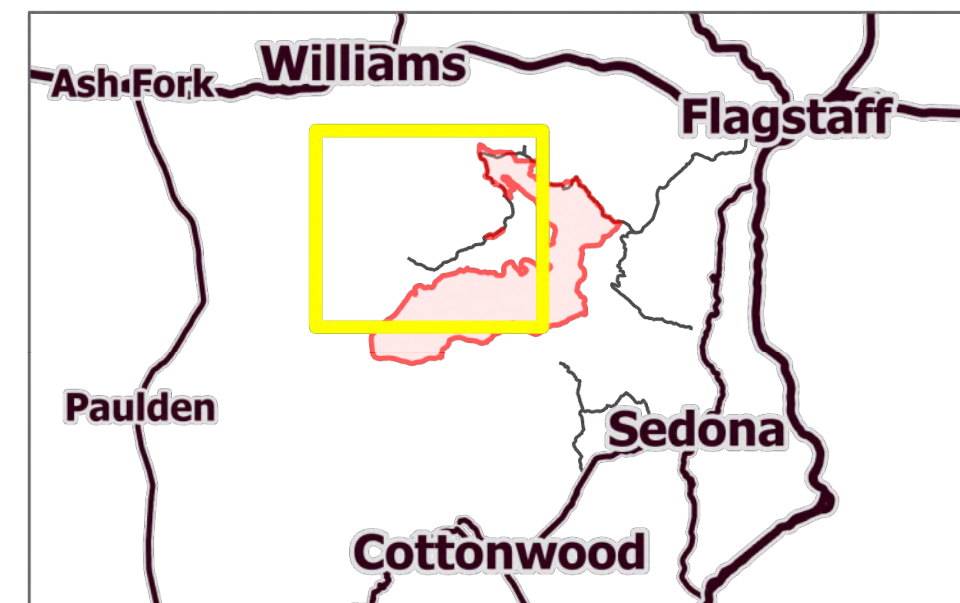
Rafael

AZ-PNF-863

6/27/2021

62,376 acres at 6/26/21 2148 hrs

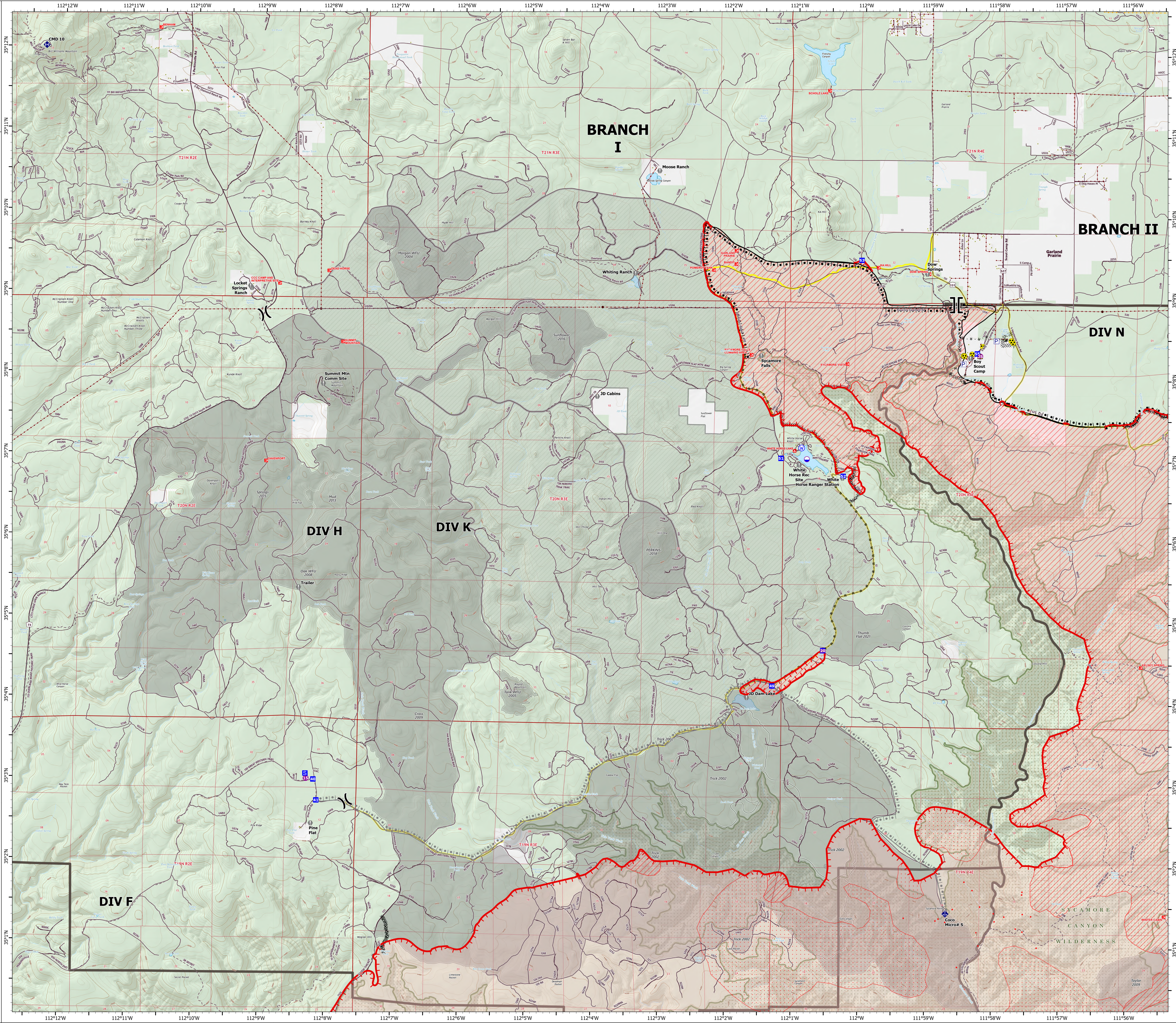
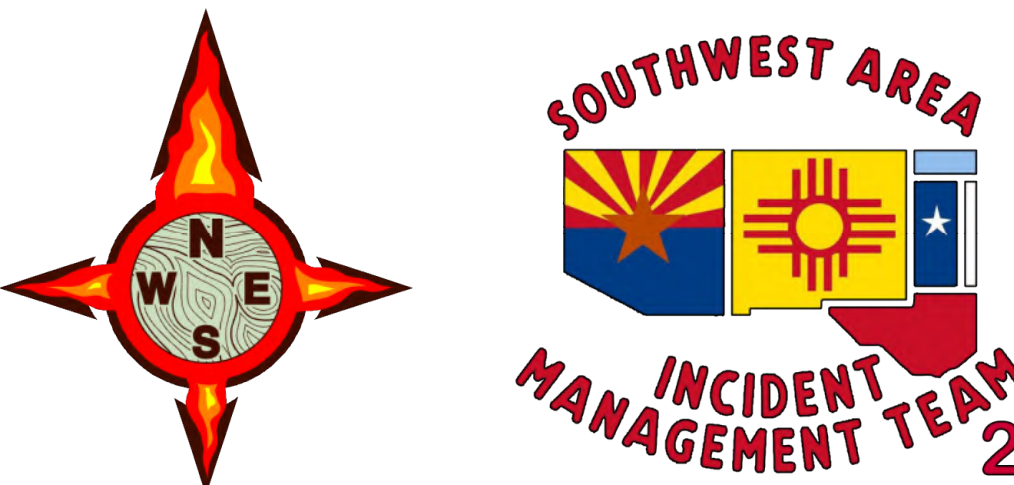
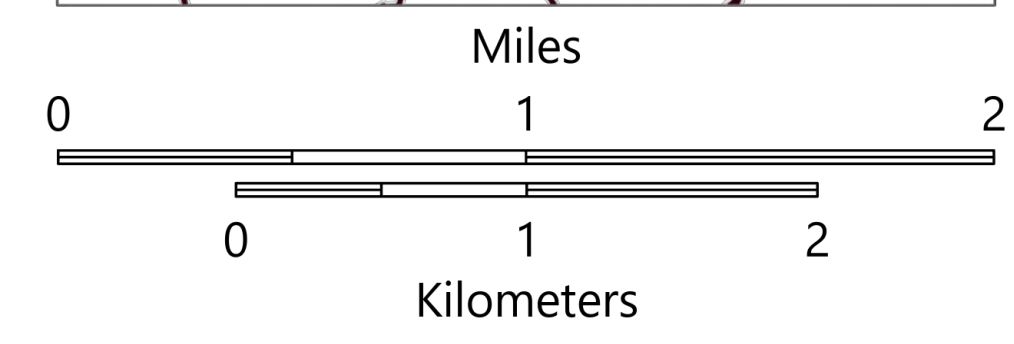
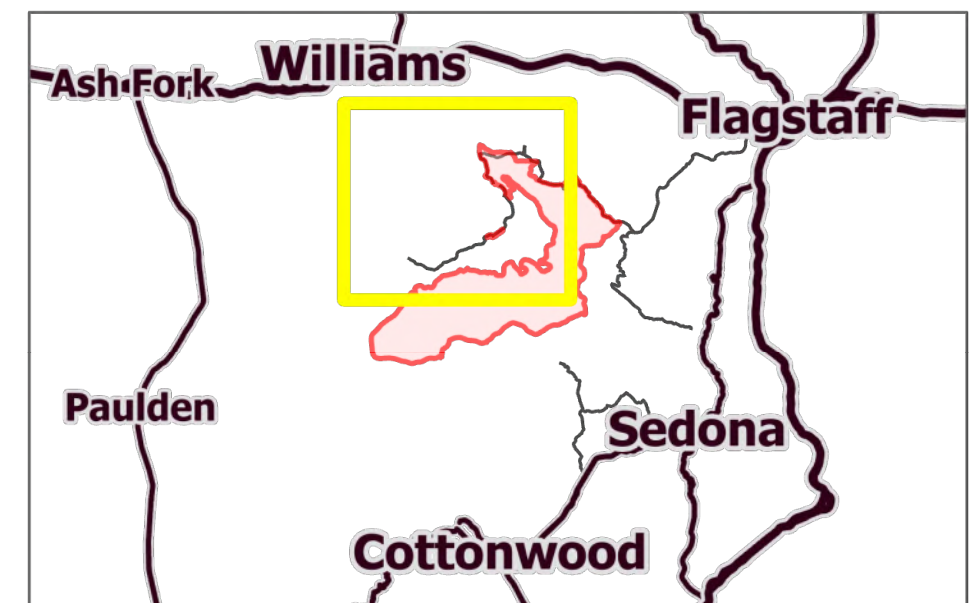
- Dip Site
- Helispot
- Division Break
- Branch Break
- Drop Point
- Staging Area
- Value at Risk
- Mobile Weather Unit
- Safety Zone
- Hazard
- Water Source
- Pump
- Water Tank
- IR Isolated Heat Source
- Campground
- Trailhead
- Structure
- Completed Burnout
- Completed Dozer Line
- Completed Hand Line
- Completed Road as Line
- Planned Burnout
- Planned Road as Line
- Planned Secondary Line
- Fire Edge
- Contained Line
- Paved Roads
- Dirt (Not Paved)
- USFS Road
- Access Road
- Trail
- IR Heat Perimeter
- IR Intense Heat
- IR Scattered Heat
- Wildfire Daily Fire Perimeter
- Substation
- Transmission Line
- Fire History
- Administrative FS Boundary
- Federal Wilderness Boundary
- County Boundary
- Private
- US Forest Service



# OPERATIONS

**DIV K**  
Rafael  
AZ-PNF-863  
6/27/2021  
62,376 acres at 6/26/21 2148 hrs

- Dip Site
- Helispot
- Division Break
- Branch Break
- Drop Point
- Staging Area
- Value at Risk
- Mobile Weather Unit
- Repeater
- Safety Zone
- Hazard
- Water Source
- Pump
- Water Tank
- IR Isolated Heat Source
- Campground
- Trailhead
- Structure
- Completed Burnout
- Completed Dozer Line
- Completed Hand Line
- Completed Road as Line
- Planned Burnout
- Planned Road as Line
- Planned Secondary Line
- Fire Edge
- Contained Line
- Paved Roads
- Dirt (Not Paved)
- USFS Road
- Access Road
- Trail
- IR Heat Perimeter
- IR Intense Heat
- IR Scattered Heat
- Wildfire Daily Fire Perimeter
- Substation
- Transmission Line
- Natural Gas Liquid Pipeline
- Fire History
- Administrative FS Boundary
- Federal Wilderness Boundary
- County Boundary
- Private
- US Forest Service



# OPERATIONS

DIV N

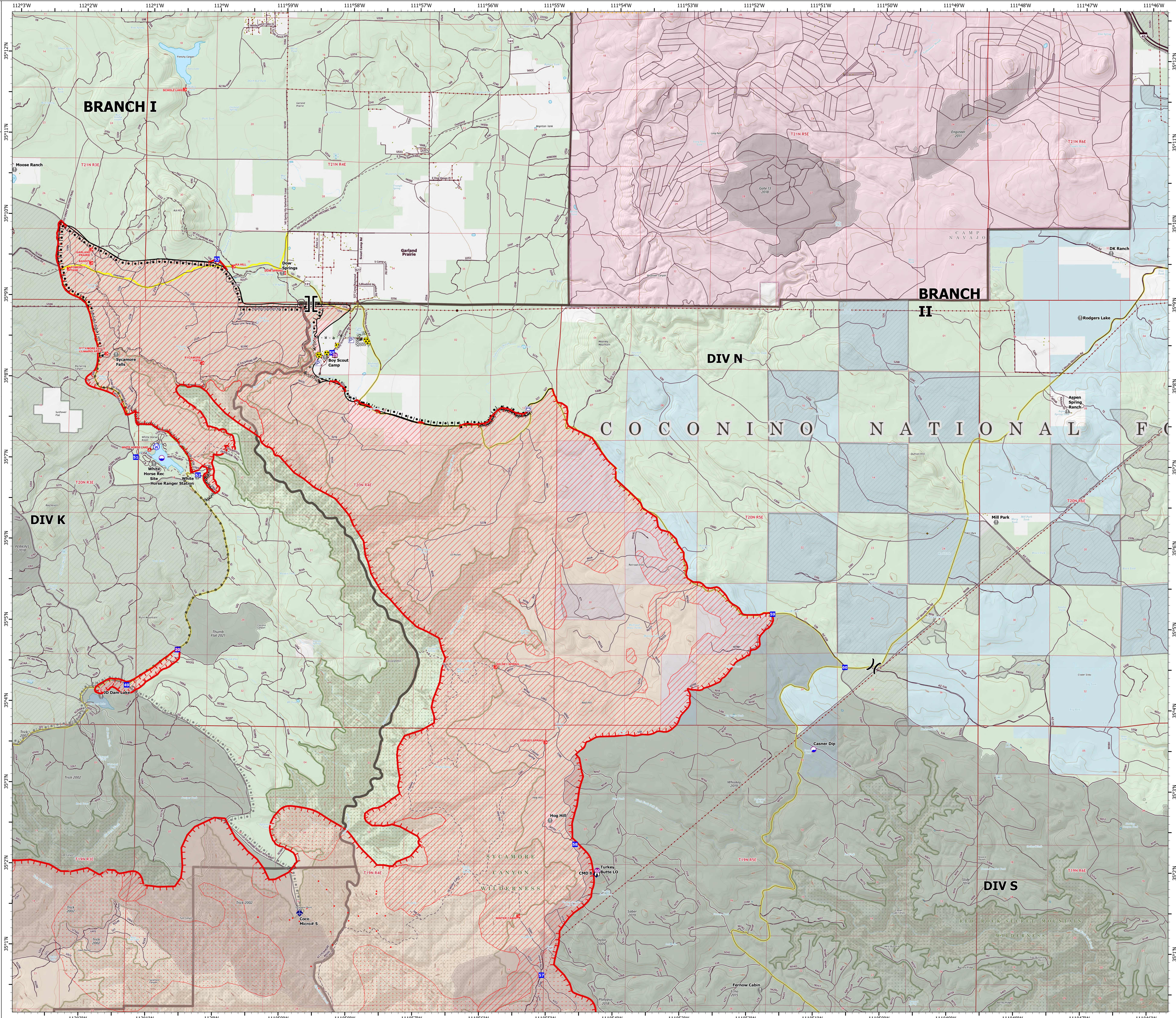
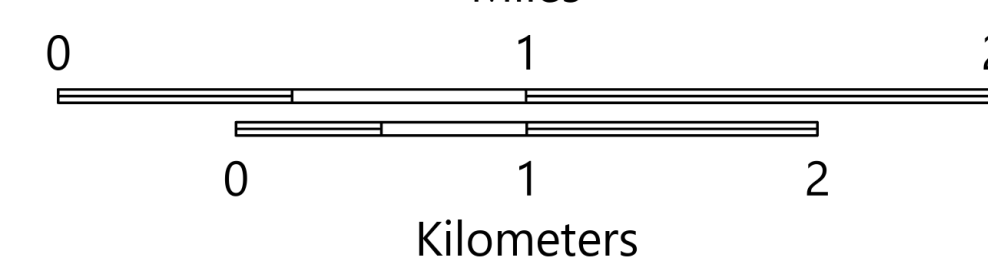
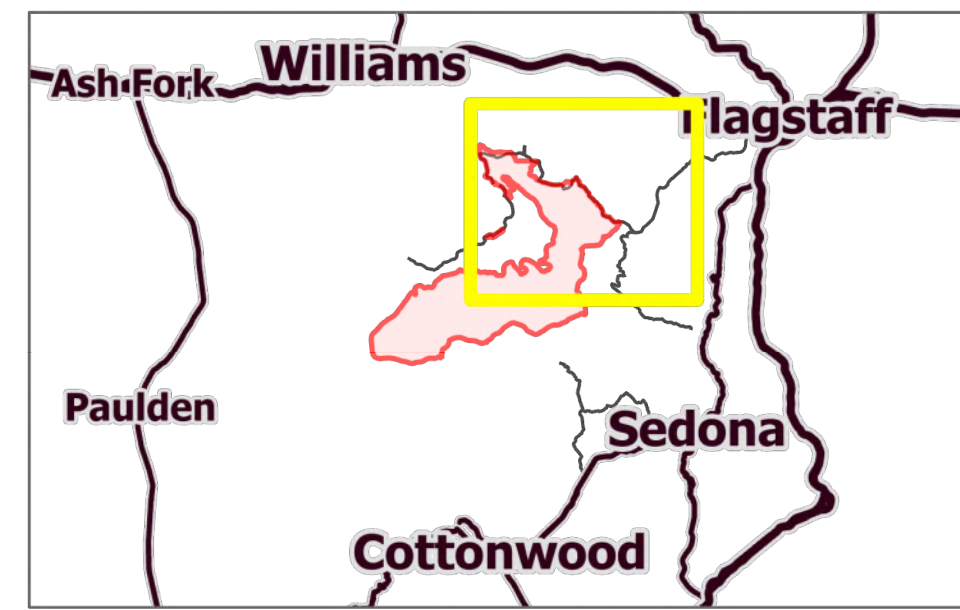
Rafael

AZ-PNF-863

6/27/2021

62,376 acres at 6/26/21 2148 hrs

- Dip Site
- Helispot
- Division Break
- Branch Break
- Drop Point
- Lookout
- Value at Risk
- Mobile Weather Unit
- Repeater
- Safety Zone
- Hazard
- Water Source
- Pump
- Water Tank
- IR Isolated Heat Source
- Campground
- Trailhead
- Structure
- Completed Burnout
- Completed Dozer Line
- Completed Hand Line
- Completed Road as Line
- Planned Burnout
- Planned Secondary Line
- Fire Edge
- Contained Line
- Primary Highway
- Paved Roads
- Dirt (Not Paved)
- USFS Road
- Access Road
- Trail
- Railroad
- IR Heat Perimeter
- IR Intense Heat
- IR Scattered Heat
- Wildfire Daily Fire Perimeter
- Substation
- Transmission Line
- Natural Gas Liquid Pipeline
- Oil and Natural Gas Well
- Fire History
- Fuel Treatment
- Administrative FS Boundary
- Federal Wilderness Boundary
- County Boundary
- Military
- Private
- State
- US Forest Service



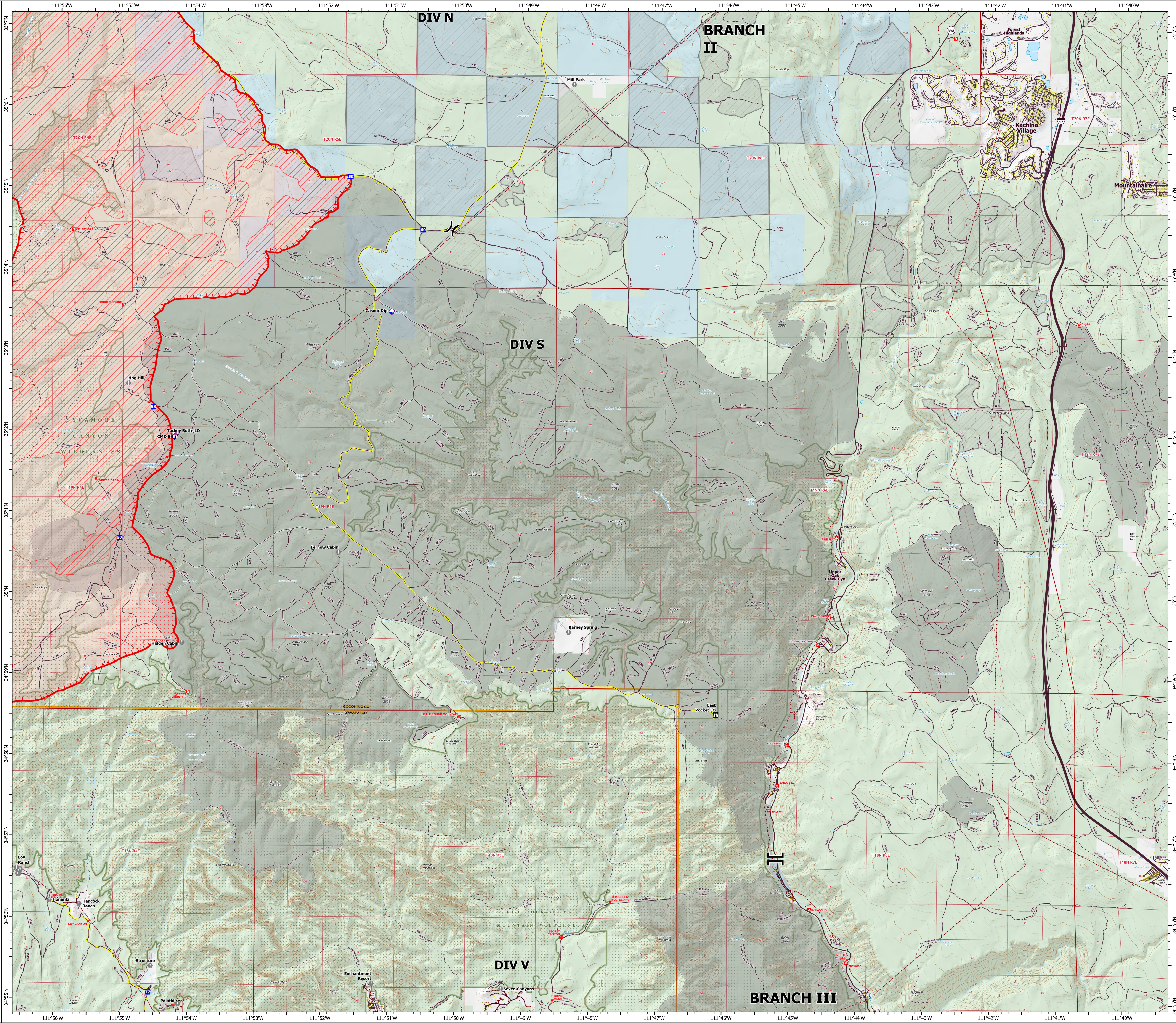
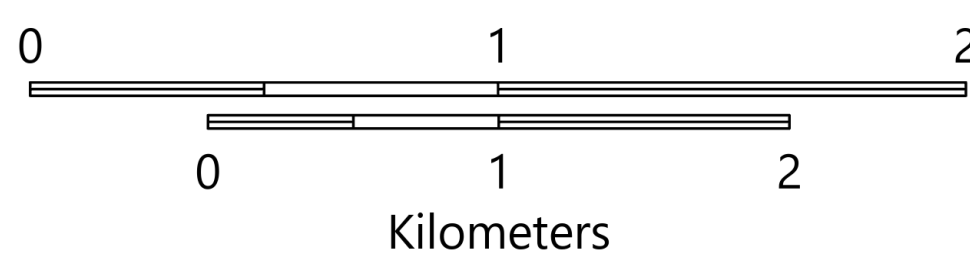
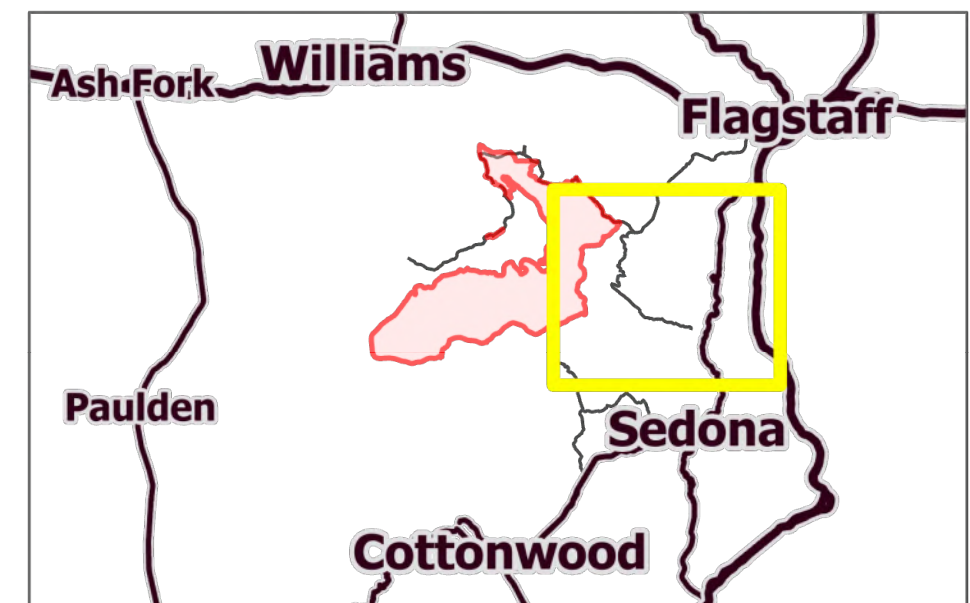
# OPERATIONS

DIV S

Rafael  
AZ-PNF-863  
6/27/2021

62,376 acres at 6/26/21 2148 hrs

- Dip Site
- Helispot
- Division Break
- Branch Break
- Drop Point
- Lookout
- Value at Risk
- Gate
- Repeater
- Hazard
- Campground
- Trailhead
- Visitor Center
- Picnic Site
- Interpretive Site
- Structure
- Completed Hand Line
- Other
- Fire Edge
- Primary Highway
- Secondary Highway
- Paved Roads
- Dirt (Not Paved)
- USFS Road
- Access Road
- Trail
- IR Heat Perimeter
- IR Intense Heat
- IR Scattered Heat
- Wildfire Daily Fire Perimeter
- Substation
- Transmission Line
- Oil and Natural Gas Well
- Fire History
- Fuel Treatment
- Administrative FS Boundary
- Federal Wilderness Boundary
- County Boundary
- Local or State Parks
- Private
- State
- US Forest Service



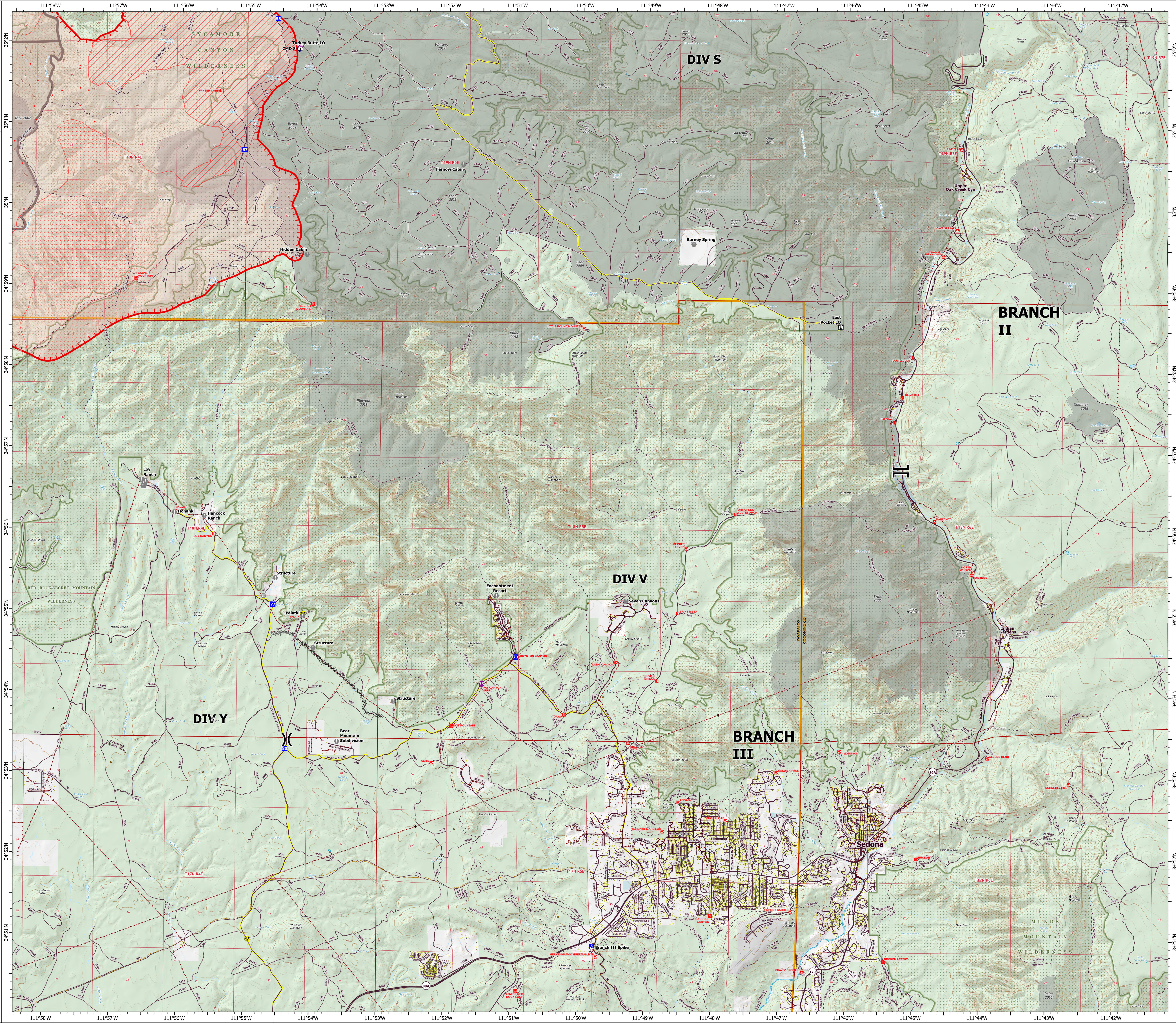
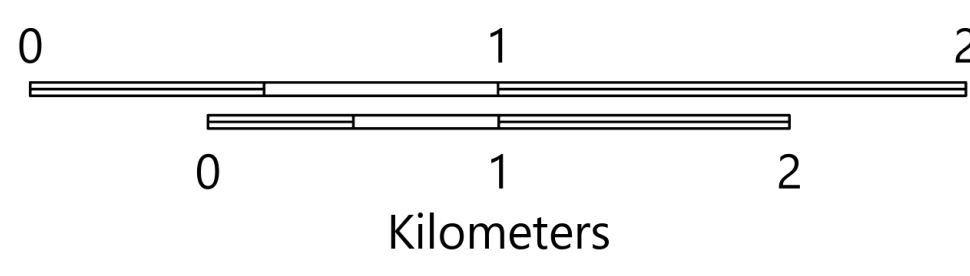
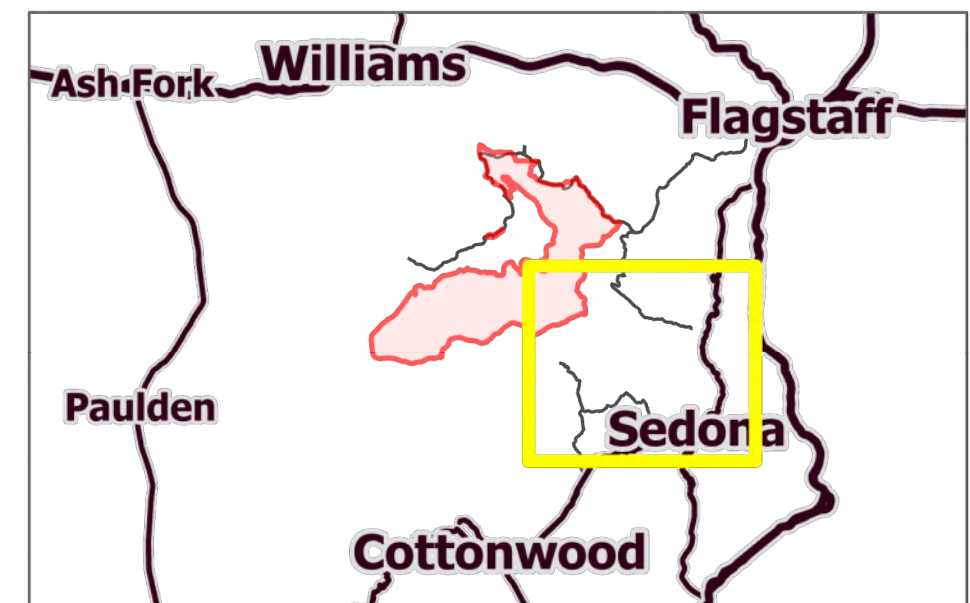
# OPERATIONS

DIV V

Rafael  
AZ-PNF-863  
6/27/2021

62,376 acres at 6/26/21 2148 hrs

- Helispot
- ( ) Division Break
- || Branch Break
- Drop Point
- ▲ Camp
- Ⓜ Lookout
- ⊙ Value at Risk
- ⊙ Gate
- ⬇ Repeater
- ⚠ Hazard
- IR Isolated Heat Source
- ▲ Campground
- Trailhead
- Ⓜ Visitor Center
- Ⓜ Picnic Site
- Ⓜ Interpretive Site
- Structure
- ⊘ Completed Dozer Line
- ⊘ Completed Hand Line
- ⊘ Planned Dozer Line
- ⊘ Other
- Fire Edge
- Primary Highway
- Secondary Highway
- Paved Roads
- Dirt (Not Paved)
- USFS Road
- Access Road
- Trail
- Tunnel; Bridge
- Runway
- ⊘ IR Heat Perimeter
- ⊘ IR Intense Heat
- ⊘ IR Scattered Heat
- ⊘ Wildfire Daily Fire Perimeter
- Substation
- Transmission Line
- Oil and Natural Gas Well
- Oil and Natural Gas Pipeline
- Fire History
- Fuel Treatment
- Administrative FS Boundary
- Federal Wilderness Boundary
- County Boundary
- County
- Local or State Parks
- Other Federal
- Private
- State
- US Forest Service



# OPERATIONS

**DIV Y**  
Rafael  
AZ-PNF-863  
6/27/2021  
62,376 acres at 6/26/21 2148 hrs

- Dip Site
- Helispot
- Division Break
- Branch Break
- Drop Point
- Camp
- Value at Risk
- Gate
- Hazard
- IR Isolated Heat Source
- Trailhead
- Visitor Center
- Interpretive Site
- Structure
- Completed Dozer Line
- Completed Hand Line
- Planned Dozer Line
- Other
- Fire Edge
- Secondary Highway
- Paved Roads
- Dirt (Not Paved)
- USFS Road
- Access Road
- Trail
- Railroad
- IR Heat Perimeter
- IR Intense Heat
- IR Scattered Heat
- Wildfire Daily Fire Perimeter
- Substation
- Transmission Line
- Oil and Natural Gas Well
- Oil and Natural Gas Pipeline
- Fire History
- Administrative FS Boundary
- Federal Wilderness Boundary
- County Boundary
- Local or State Parks
- Private
- US Forest Service

