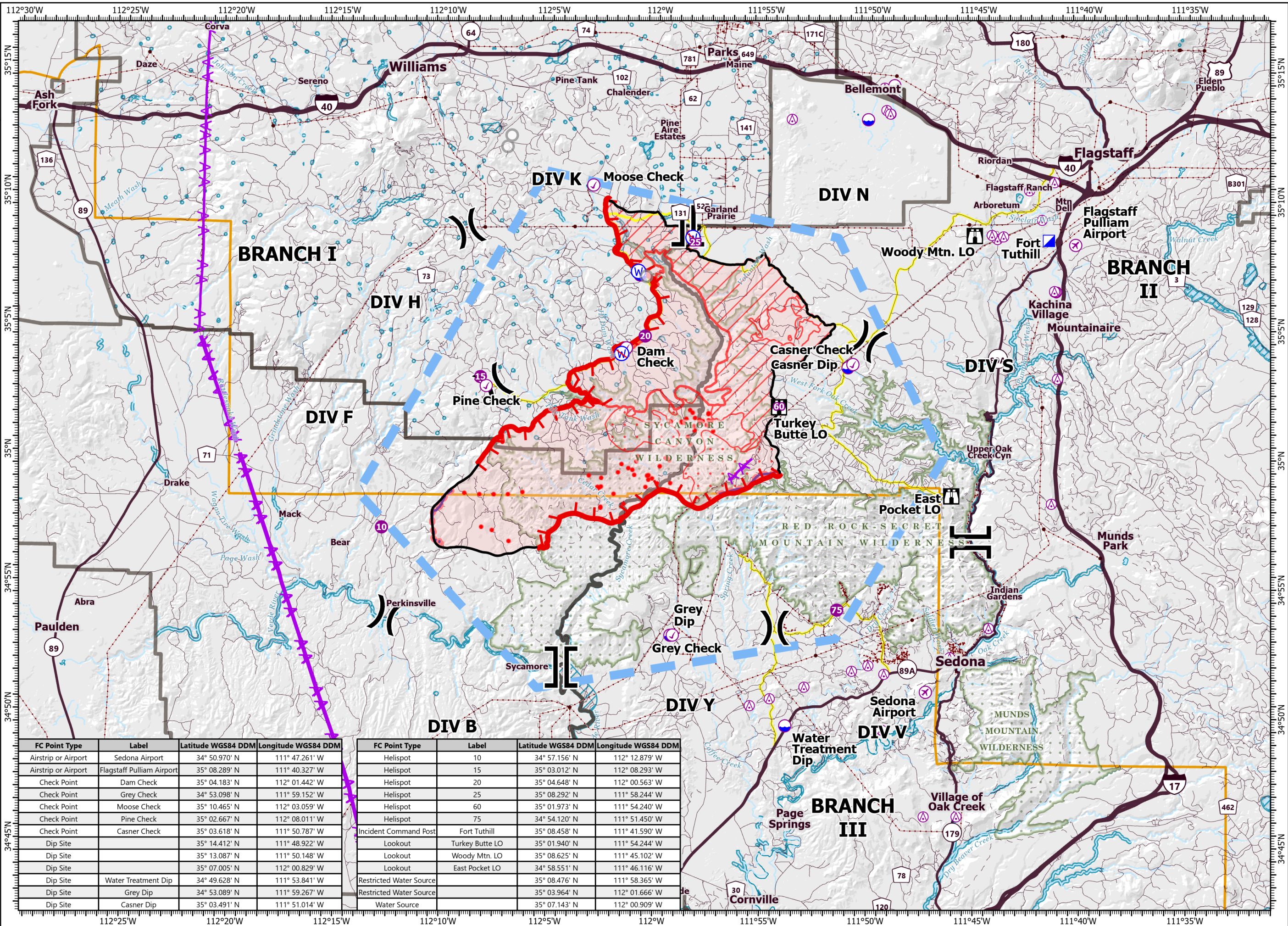


PILOT

Rafael
AZ-PNF-863
6/27/2021

76,322 acres at 6/27/21 1630 hrs

- Aerial Hazard
- Airstrip or Airport
- Check Point
- Dip Site
- Helispot
- Division Break
- Branch Break
- Incident Command Post
- Lookout
- Water Source
- Restricted Water Source
- IR Isolated Heat Source
- Aerial Hazard
- Retardant Drop
- Temporary Flight Restriction
- Fire Edge
- Contained Line
- Wildfire Daily Fire Perimeter
- IR Heat Perimeter
- IR Intense Heat
- IR Scattered Heat
- Primary Highway
- Secondary Highway
- USFS Road
- Access Road
- Trail
- Retardant Avoidance
- Sensitive Resource Avoidance Area
- Substation
- Transmission Line
- Administrative FS Boundary
- Federal Wilderness Boundary
- County Boundary



FC Point Type	Label	Latitude WGS84 DDM	Longitude WGS84 DDM
Airstrip or Airport	Sedona Airport	34° 50.970' N	111° 47.261' W
Airstrip or Airport	Flagstaff Pulliam Airport	35° 08.289' N	111° 40.327' W
Check Point	Dam Check	35° 04.183' N	112° 01.442' W
Check Point	Grey Check	34° 53.098' N	111° 59.152' W
Check Point	Moose Check	35° 10.465' N	112° 03.059' W
Check Point	Pine Check	35° 02.667' N	112° 08.011' W
Check Point	Casner Check	35° 03.618' N	111° 50.787' W
Dip Site		35° 14.412' N	111° 48.922' W
Dip Site		35° 13.087' N	111° 50.148' W
Dip Site		35° 07.005' N	112° 00.829' W
Dip Site	Water Treatment Dip	34° 49.628' N	111° 53.841' W
Dip Site	Grey Dip	34° 53.089' N	111° 59.267' W
Dip Site	Casner Dip	35° 03.491' N	111° 51.014' W

FC Point Type	Label	Latitude WGS84 DDM	Longitude WGS84 DDM
Helispot	10	34° 57.156' N	112° 12.879' W
Helispot	15	35° 03.012' N	112° 08.293' W
Helispot	20	35° 04.648' N	112° 00.563' W
Helispot	25	35° 08.292' N	111° 58.244' W
Helispot	60	35° 01.973' N	111° 54.240' W
Helispot	75	34° 54.120' N	111° 51.450' W
Incident Command Post	Fort Tuthill	35° 08.458' N	111° 41.590' W
Lookout	Turkey Butte LO	35° 01.940' N	111° 54.244' W
Lookout	Woody Mtn. LO	35° 08.625' N	111° 45.102' W
Lookout	East Pocket LO	34° 58.551' N	111° 46.116' W
Restricted Water Source		35° 08.476' N	111° 58.365' W
Restricted Water Source		35° 03.964' N	112° 01.666' W
Water Source		35° 07.143' N	112° 00.909' W

0 2 4 Miles

0 2 4 Kilometers

1:248,000 - SWAIMT2 GIS - 6/27/2021 1721
Acres from GIS (geodesic)
North American 1983 Datum, LatLong Grid

