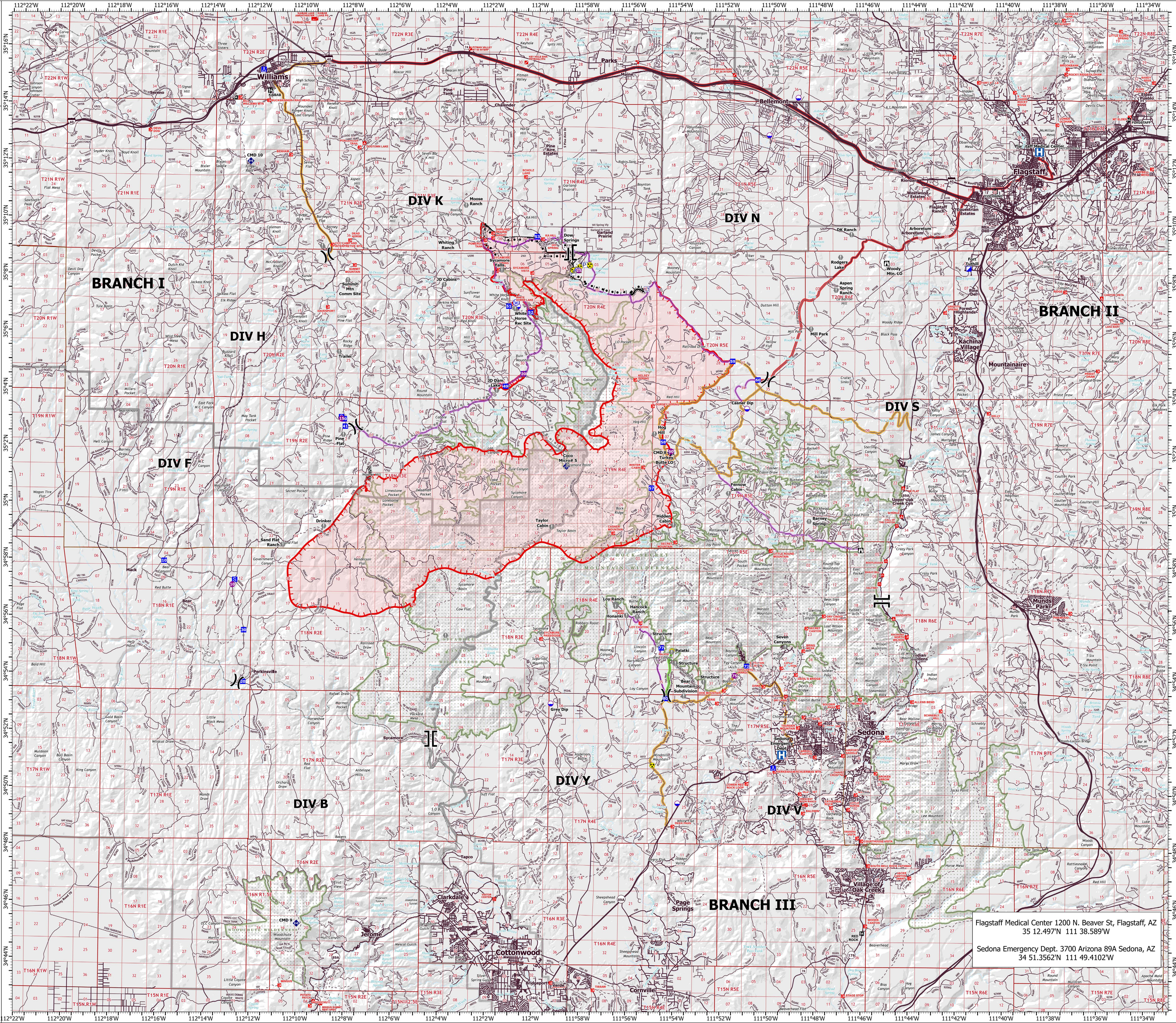
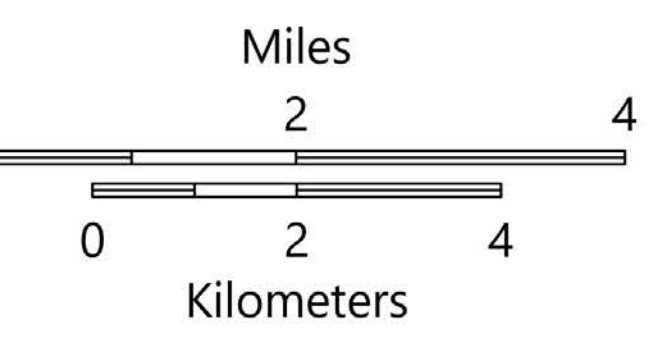
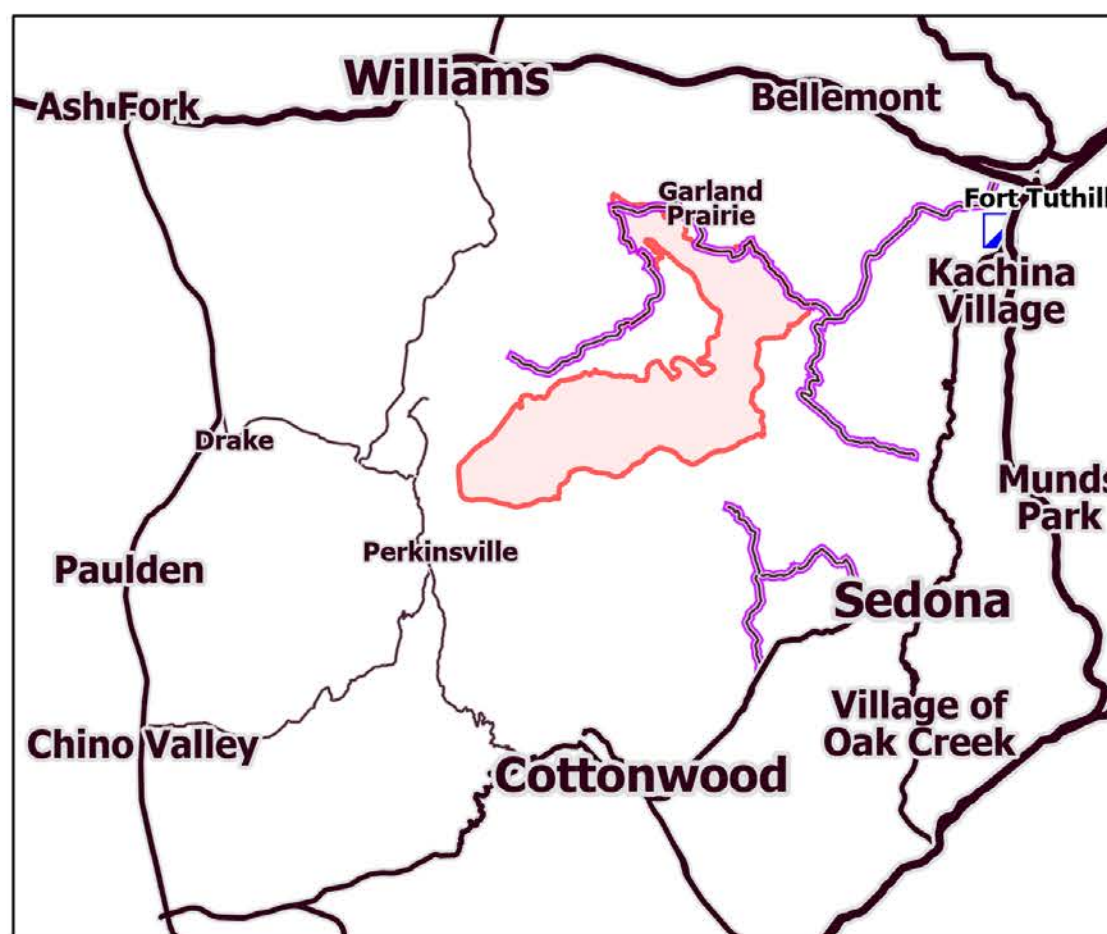


# TRANSPORTATION

Rafael  
AZ-PNF-863  
6/27/2021

62,376 acres at 6/26/21 2148 hrs

- Medical Transport Routes
  - less than 15 minutes
  - more than 15 minutes
  - 30-65minutes
- Dip Site
- Helispot
- Division Break
- Branch Break
- Incident Command Post
- Drop Point
- Camp
- Staging Area
- Lookout
- Value at Risk
- Gate
- Mobile Weather Unit
- Repeater
- Safety Zone
- Hazard
- Water Source
- Primary Highway
- Secondary Highway
- Paved Roads
- Dirt (Not Paved)
- Access Road
- Trail
- Tunnel; Bridge
- Railroad
- Completed Burnout
- Completed Dozer Line
- Completed Hand Line
- Completed Road as Line
- Planned Burnout
- Planned Dozer Line
- Planned Road as Line
- Planned Secondary Line
- Other
- Fire Edge
- Contained Line
- Wildfire Daily Fire Perimeter



Flagstaff Medical Center 1200 N. Beaver St, Flagstaff, AZ  
35 12.497'N 111 38.589'W  
Sedona Emergency Dept. 3700 Arizona 89A Sedona, AZ  
34 51.3562'N 111 49.4102'W