

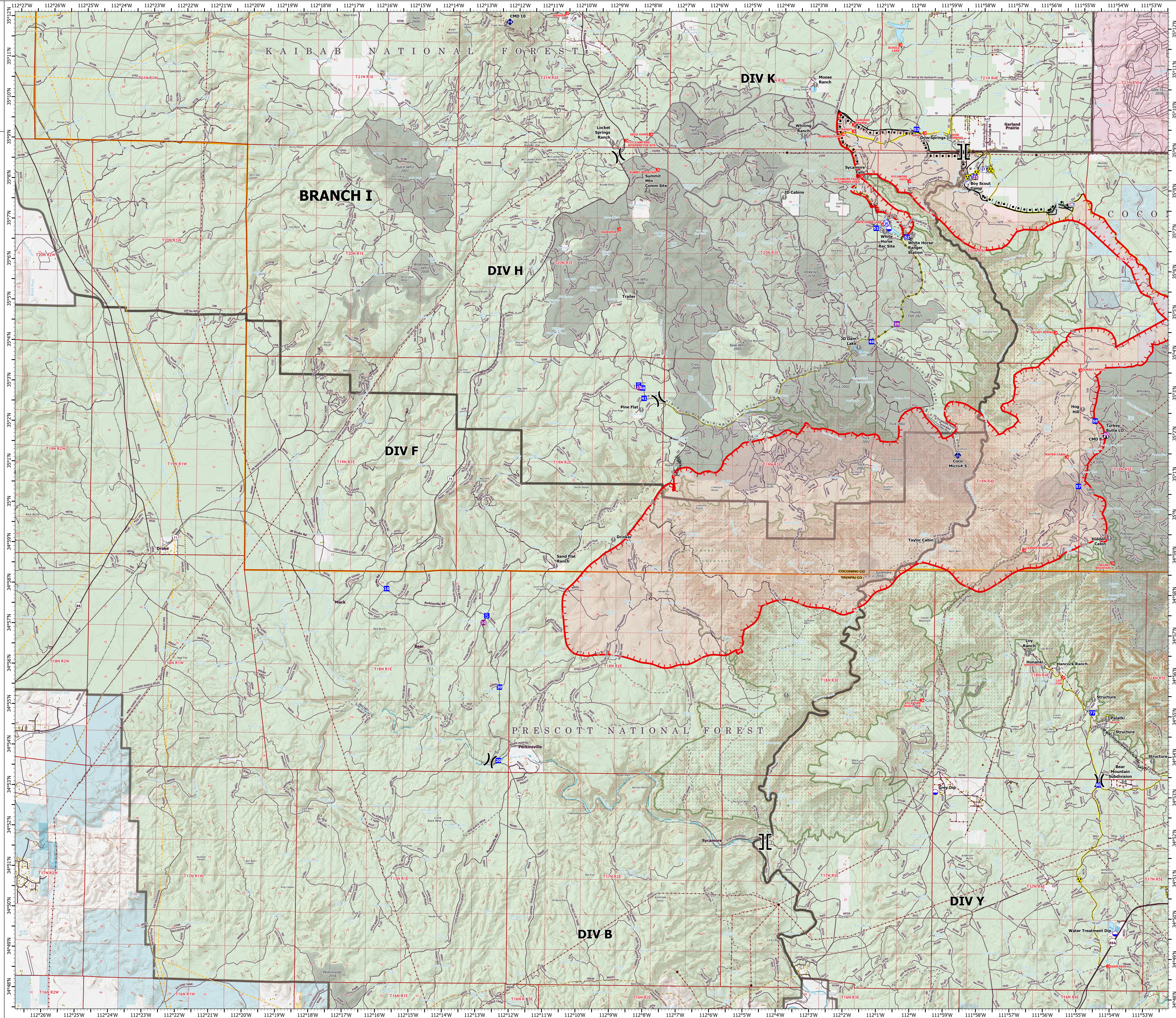
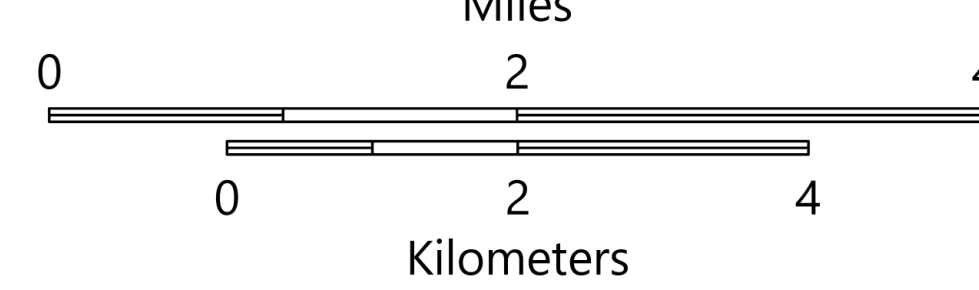
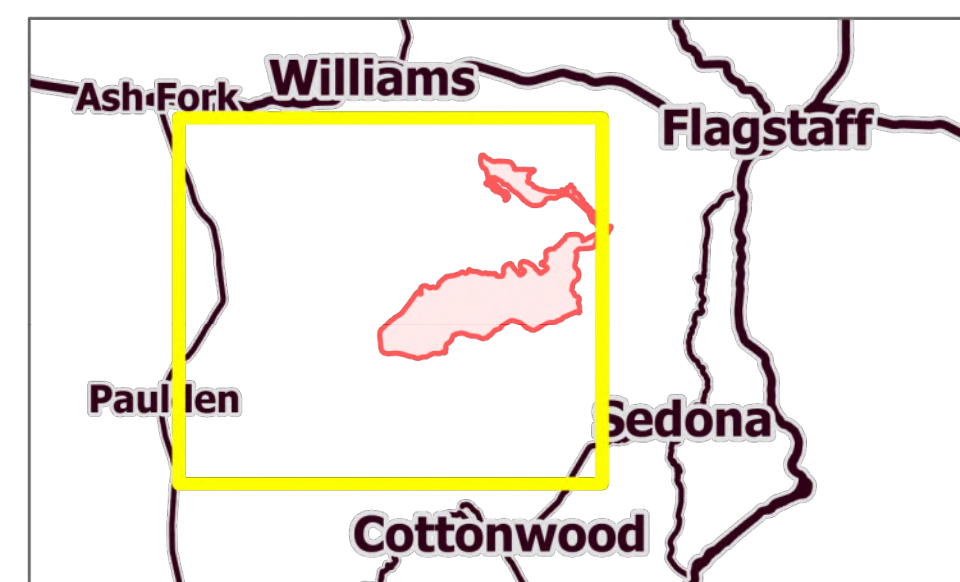
# OPERATIONS

## BRANCH I

Rafael  
AZ-PNF-863  
6/27/2021

53,664 acres at 6/26/21 1500 hrs

- Helispot
- Dip Site
- ⌋ Division Break
- ⌋ Branch Break
- Drop Point
- Ⓜ Staging Area
- Ⓜ Lookout
- Ⓜ Value at Risk
- Ⓜ Gate
- Ⓜ Mobile Weather Unit
- Ⓜ Repeater
- Ⓜ Safety Zone
- Ⓜ Hazard
- Ⓜ Water Source
- Ⓜ Pump
- Ⓜ Water Tank
- Ⓜ Structure
- Ⓜ Completed Burnout
- Ⓜ Completed Dozer Line
- Ⓜ Completed Hand Line
- Ⓜ Completed Road as Line
- Ⓜ Planned Burnout
- Ⓜ Planned Dozer Line
- Ⓜ Planned Road as Line
- Ⓜ Planned Secondary Line
- Ⓜ Other
- Ⓜ Fire Edge
- Ⓜ Contained Line
- Ⓜ Secondary Highway
- Ⓜ Paved Roads
- Ⓜ Dirt (Not Paved)
- Ⓜ USFS Road
- Ⓜ Access Road
- Ⓜ Trail
- Ⓜ Railroad
- Ⓜ Wildfire Daily Fire Perimeter
- Substation
- Ⓜ Transmission Line
- Ⓜ Natural Gas Liquid Pipeline
- Oil and Natural Gas Well
- Ⓜ Oil and Natural Gas Pipeline
- Ⓜ Fire History
- Ⓜ Administrative FS Boundary
- Ⓜ Federal Wilderness Boundary
- Ⓜ County Boundary
- Ⓜ Bureau of Land Management
- Ⓜ Military
- Ⓜ Private
- Ⓜ State
- Ⓜ State Wildlife Area
- Ⓜ US Forest Service



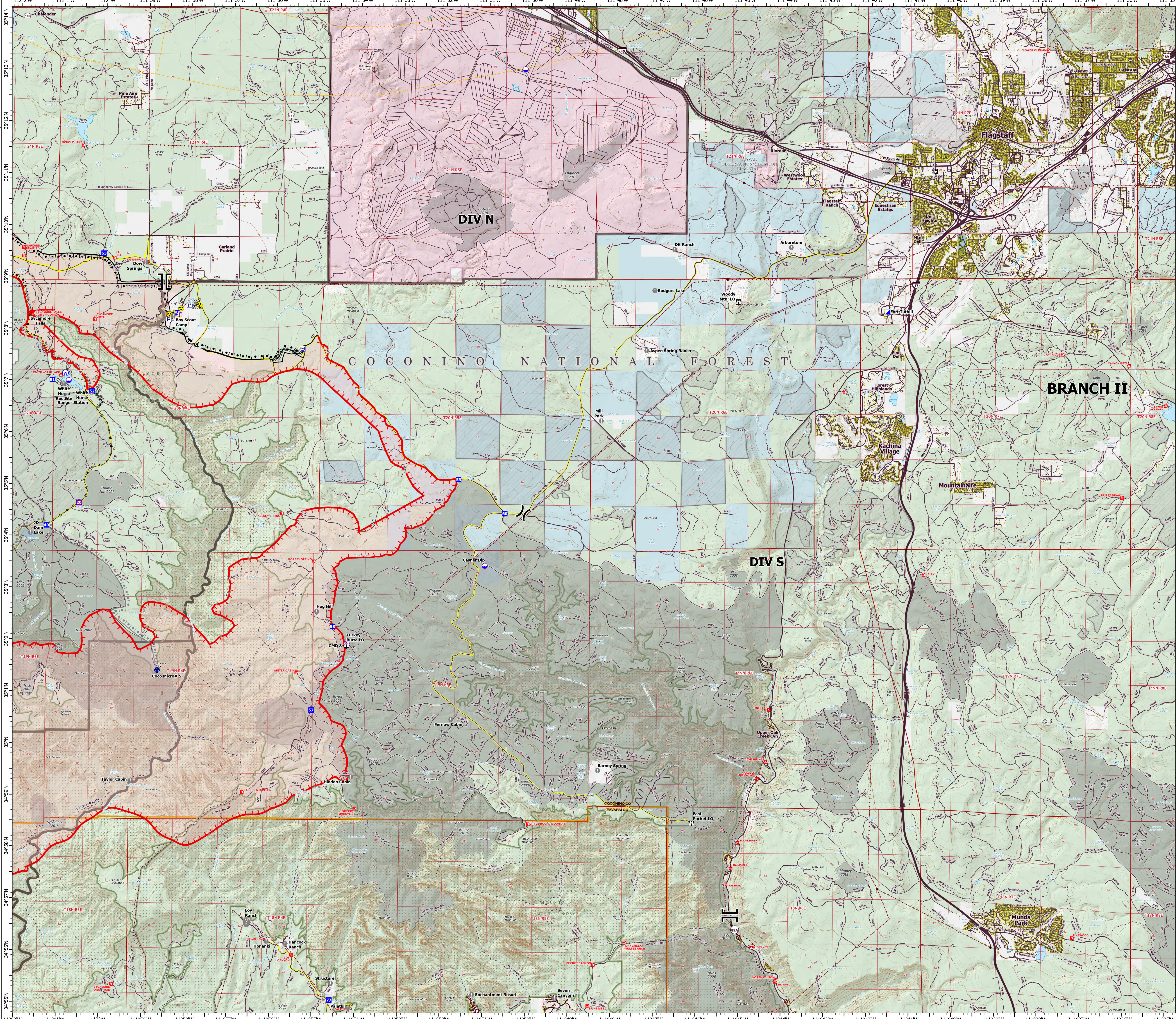
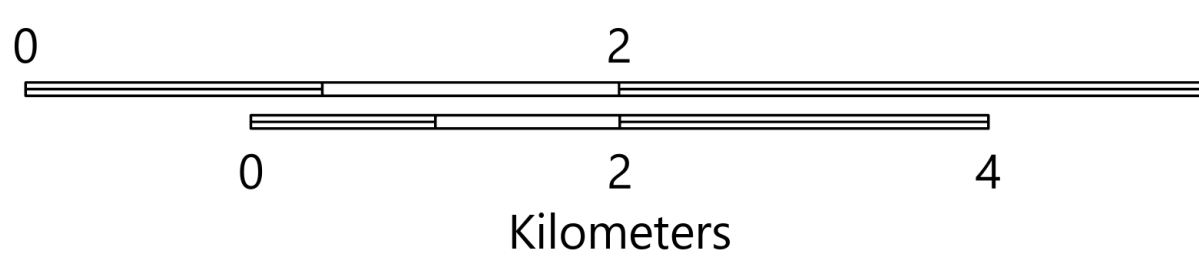
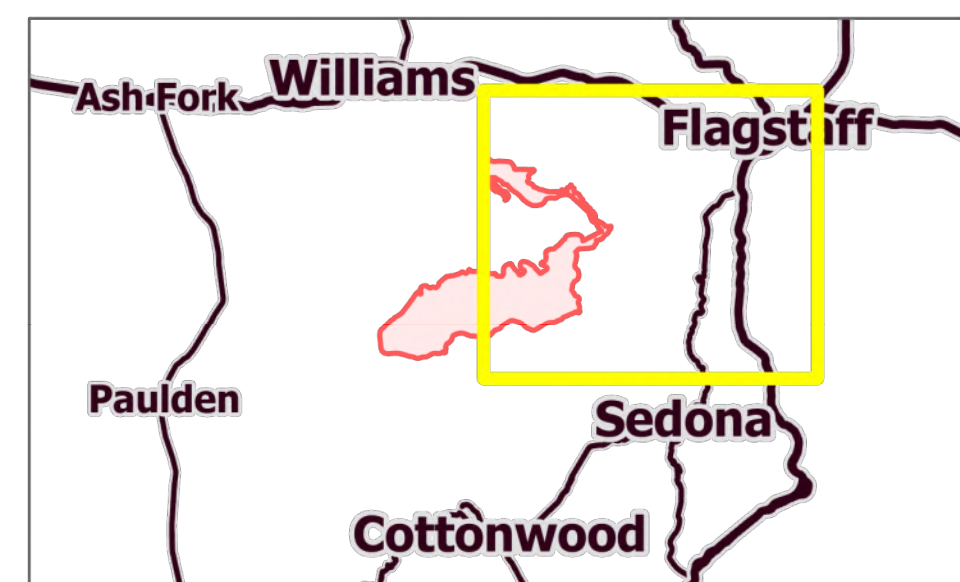
# OPERATIONS

## BRANCH II

Rafael  
AZ-PNF-863  
6/27/2021

53,664 acres at 6/26/21 1500 hrs

- Helispot
- Dip Site
- ⌵ Division Break
- ⌵ Branch Break
- ▣ Incident Command Post
- ▣ Drop Point
- ⌵ Lookout
- ⊕ Value at Risk
- ⊕ Gate
- ⊕ Mobile Weather Unit
- ⊕ Repeater
- ⊕ Safety Zone
- ⊕ Hazard
- ⊕ Water Source
- ⊕ Pump
- ⊕ Water Tank
- ⊕ Structure
- ▬ Completed Burnout
- ▬ Completed Dozer Line
- ▬ Completed Hand Line
- ▬ Completed Road as Line
- ▬ Planned Burnout
- ▬ Planned Secondary Line
- ▬ Other
- ▬ Fire Edge
- ▬ Contained Line
- ▬ Primary Highway
- ▬ Secondary Highway
- ▬ Paved Roads
- ▬ Dirt (Not Paved)
- ▬ USFS Road
- ▬ Access Road
- ▬ Trail
- ▬ Tunnel; Bridge
- ▬ Railroad
- ▬ Runway
- ▬ Wildfire Daily Fire Perimeter
- Substation
- ▬ Transmission Line
- ▬ Natural Gas Liquid Pipeline
- ▬ Oil and Natural Gas Well
- ▬ Oil and Natural Gas Pipeline
- ▬ Fire History
- ▬ Administrative FS Boundary
- ▬ Federal Wilderness Boundary
- ▬ County Boundary
- ▬ Local or State Parks
- ▬ Military
- ▬ Private
- ▬ State
- ▬ State Wildlife Area
- ▬ US Forest Service
- ▬ Fuel Treatment



# OPERATIONS

## BRANCH III

Rafael  
AZ-PNF-863  
6/27/2021

53,664 acres at 6/26/21 1500 hrs

- Helispot
- Dip Site
- ( ) Division Break
- ┆ Branch Break
- Drop Point
- ⛑ Camp
- ⚠ Lookout
- ⚠ Value at Risk
- ⚠ Gate
- ⚠ Mobile Weather Unit
- ⚠ Hazard
- ▭ Structure
- Completed Dozer Line
- Completed Hand Line
- Planned Dozer Line
- Other
- Fire Edge
- Primary Highway
- Secondary Highway
- Paved Roads
- Dirt (Not Paved)
- USFS Road
- Access Road
- Trail
- Tunnel; Bridge
- Railroad
- Runway
- Wildfire Daily Fire Perimeter
- Substation
- Transmission Line
- Natural Gas Liquid Pipeline
- Oil and Natural Gas Well
- Oil and Natural Gas Pipeline
- ▭ Fire History
- ▭ Administrative FS Boundary
- ▭ Federal Wilderness Boundary
- ▭ County Boundary
- ▭ County
- ▭ Indian Lands
- ▭ Local or State Parks
- ▭ National Park Service
- ▭ Other Federal
- ▭ Private
- ▭ State
- ▭ State Wildlife Area
- ▭ US Forest Service
- ▭ Fuel Treatment

