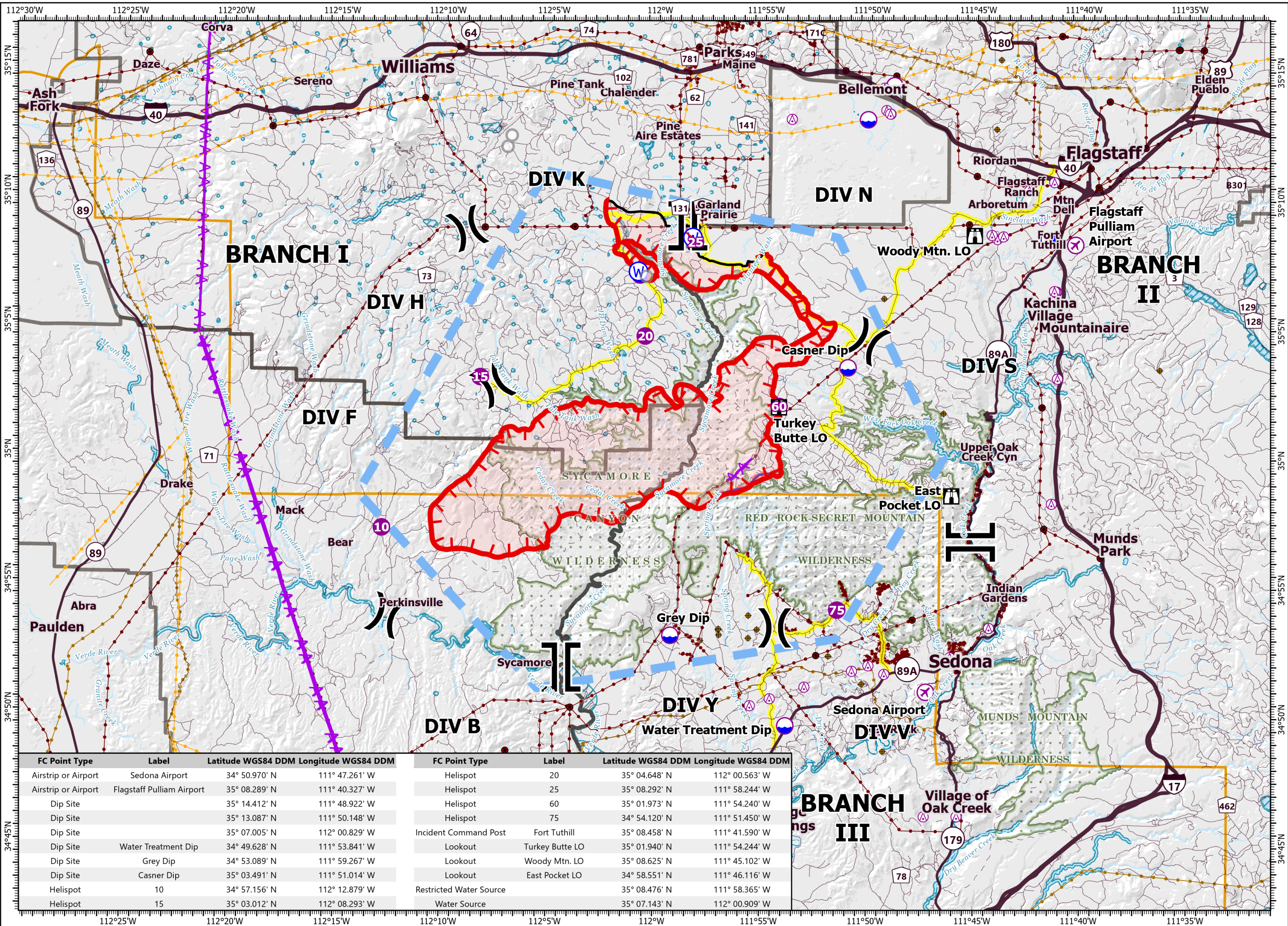


# PILOT

Rafael  
AZ-PNF-863  
6/27/2021

53,664 acres at 6/26/21 1500 hrs

- Aerial Hazard
- Airstrip or Airport
- Dip Site
- Helispot
- Division Break
- Branch Break
- Incident Command Post
- Lookout
- Water Source
- Restricted Water Source
- Aerial Hazard
- Retardant Drop
- Temporary Flight Restriction
- Fire Edge
- Contained Line
- Wildfire Daily Fire Perimeter
- Primary Highway
- Secondary Highway
- USFS Road
- Access Road
- Trail
- Substation
- Transmission Line
- Natural Gas Liquid Pipeline
- Oil and Natural Gas Well
- Oil and Natural Gas Pipeline
- Administrative FS Boundary
- Federal Wilderness Boundary
- County Boundary
- Retardant Avoidance
- Sensitive Resource Avoidance Area



FC Point Type	Label	Latitude WGS84 DDM	Longitude WGS84 DDM	FC Point Type	Label	Latitude WGS84 DDM	Longitude WGS84 DDM
Airstrip or Airport	Sedona Airport	34° 50.970' N	111° 47.261' W	Helispot	20	35° 04.648' N	112° 00.563' W
Airstrip or Airport	Flagstaff Pulliam Airport	35° 08.289' N	111° 40.327' W	Helispot	25	35° 08.292' N	111° 58.244' W
Dip Site		35° 14.412' N	111° 48.922' W	Helispot	60	35° 01.973' N	111° 54.240' W
Dip Site		35° 13.087' N	111° 50.148' W	Helispot	75	34° 54.120' N	111° 51.450' W
Dip Site		35° 07.005' N	112° 00.829' W	Incident Command Post	Fort Tuthill	35° 08.458' N	111° 41.590' W
Dip Site	Water Treatment Dip	34° 49.628' N	111° 53.841' W	Lookout	Turkey Butte LO	35° 01.940' N	111° 54.244' W
Dip Site	Grey Dip	34° 53.089' N	111° 59.267' W	Lookout	Woody Mtn. LO	35° 08.625' N	111° 45.102' W
Dip Site	Casner Dip	35° 03.491' N	111° 51.014' W	Lookout	East Pocket LO	34° 58.551' N	111° 46.116' W
Helispot	10	34° 57.156' N	112° 12.879' W	Restricted Water Source		35° 08.476' N	111° 58.365' W
Helispot	15	35° 03.012' N	112° 08.293' W	Water Source		35° 07.143' N	112° 00.909' W

0 2 4 Miles  
0 2 4 Kilometers

1:248,000 - SWAIMT2 GIS - 6/26/2021 2127  
Acres from GIS (geodesic)  
North American 1983 Datum, Lat/Long Grid