

OPERATIONS

DIV B

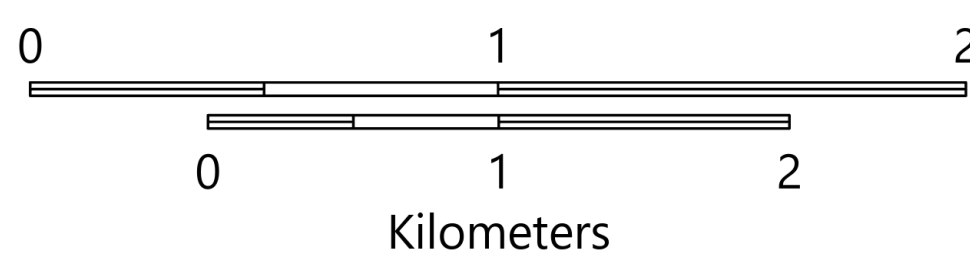
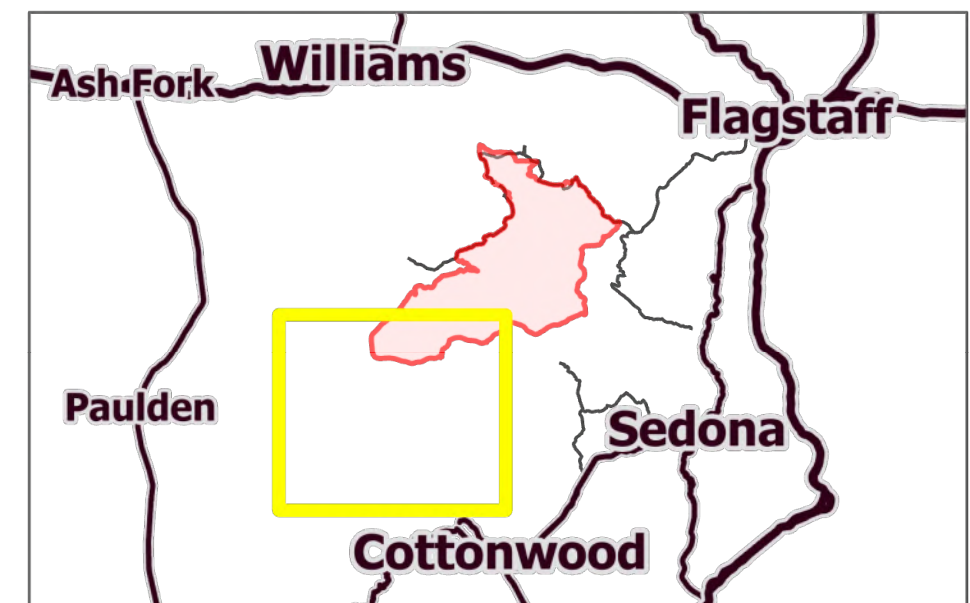
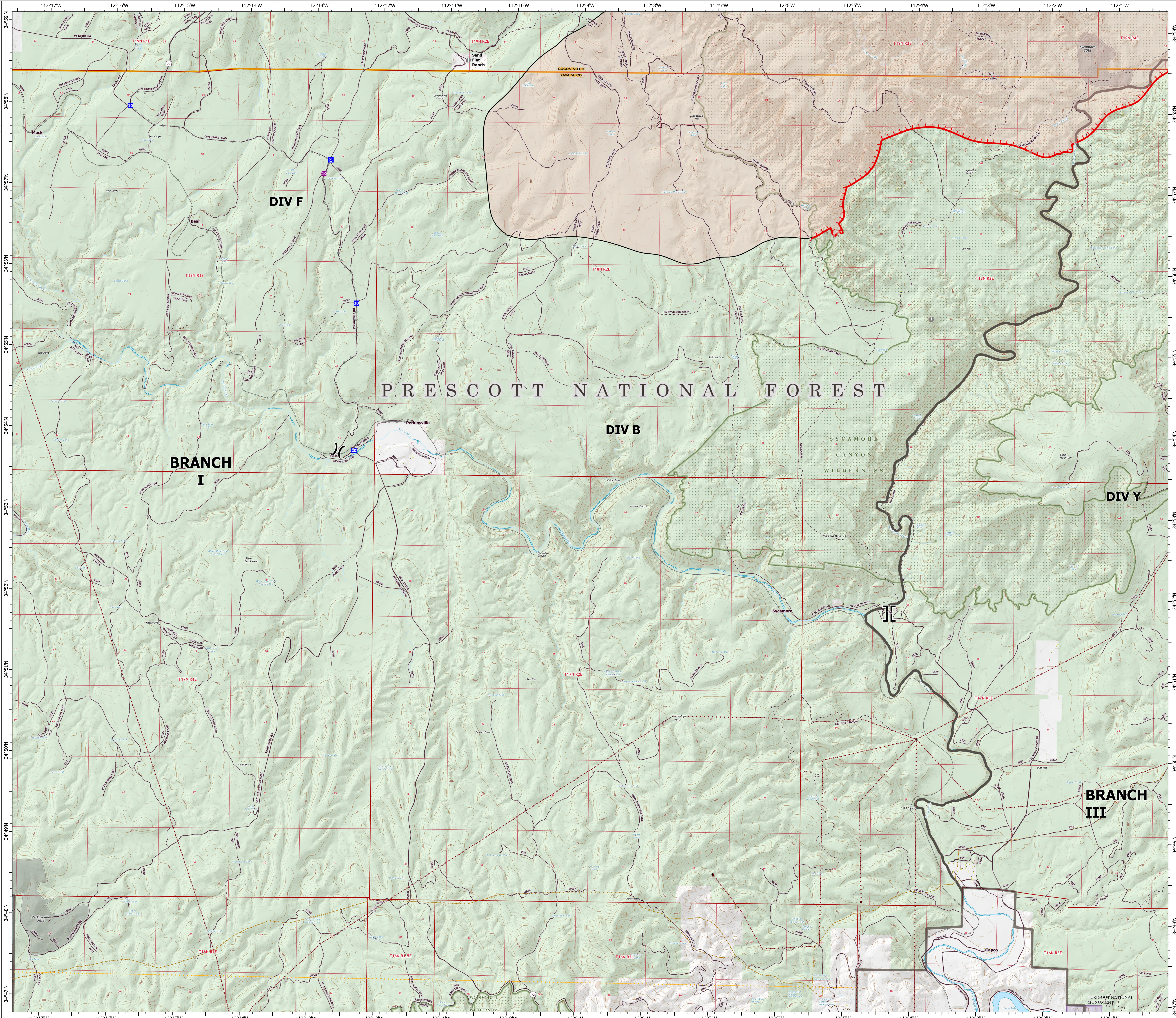
Rafael

AZ-PNF-863

6/28/2021

76,322 acres at 6/27/21 1630 hrs

- Helispot
- ⌋ Division Break
- ⌋ Branch Break
- Drop Point
- Staging Area
- Value at Risk
- Structure
- Planned Road as Line
- Fire Edge
- Contained Line
- Paved Roads
- Dirt (Not Paved)
- USFS Road
- Trail
- Railroad
- ▭ Wildfire Daily Fire Perimeter
- Substation
- Transmission Line
- Natural Gas Liquid Pipeline
- Oil and Natural Gas Pipeline
- Fire History
- ▭ Administrative FS Boundary
- ▭ Federal Wilderness Boundary
- ▭ County Boundary
- ▭ National Park Service
- ▭ Private
- ▭ State
- ▭ US Forest Service



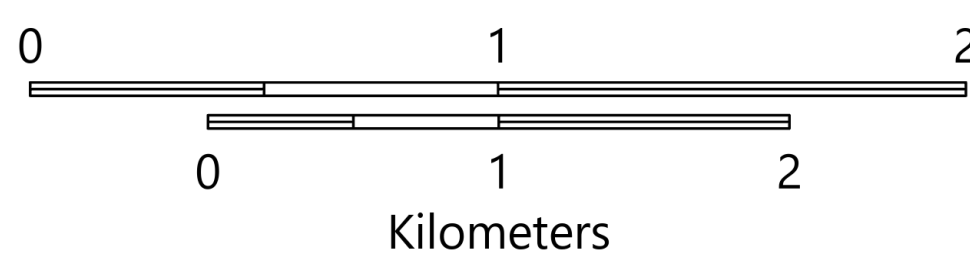
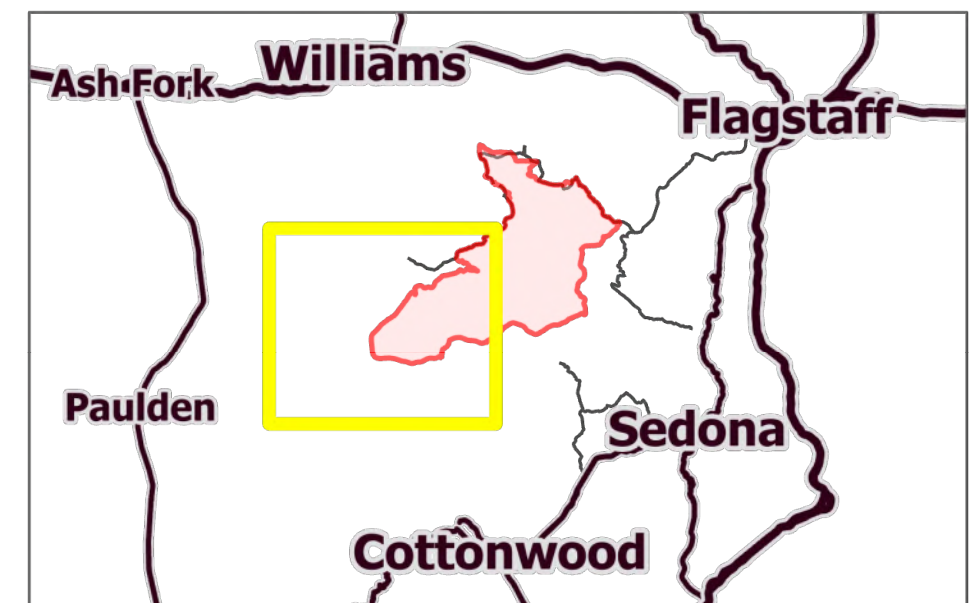
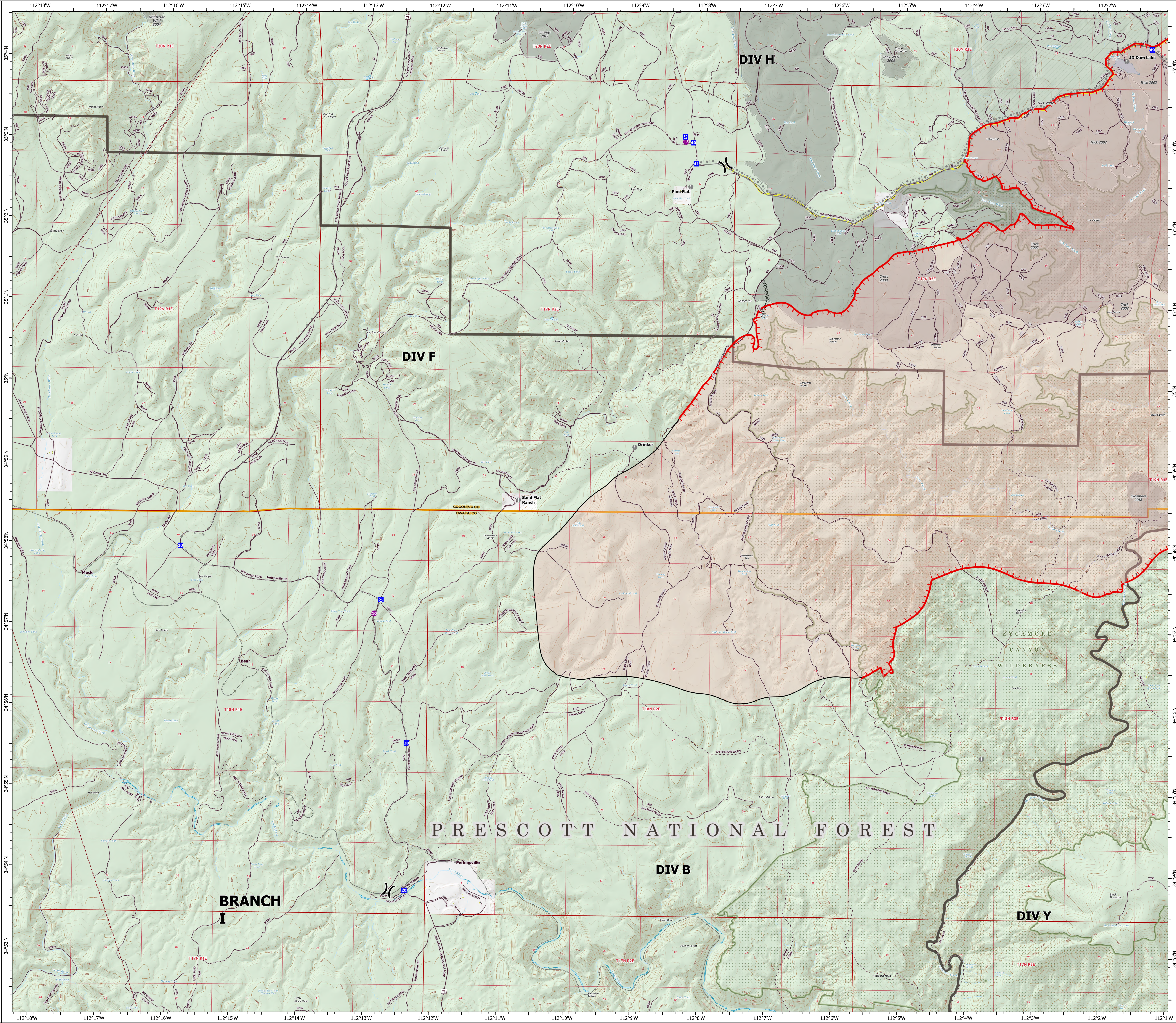
OPERATIONS

DIV F

Rafael
AZ-PNF-863
6/28/2021

76,322 acres at 6/27/21 1630 hrs

- Helispot
- () Division Break
- Drop Point
- Staging Area
- Value at Risk
- Structure
- ▨ Completed Dozer Line
- ▨ Completed Road as Line
- ▨ Planned Burnout
- ▨ Planned Road as Line
- ▨ Fire Edge
- ▨ Contained Line
- ▨ Paved Roads
- ▨ Dirt (Not Paved)
- ▨ USFS Road
- ▨ Access Road
- ▨ Trail
- ▨ Railroad
- ▨ Wildfire Daily Fire Perimeter
- ▨ Transmission Line
- ▨ Fire History
- ▨ Administrative FS Boundary
- ▨ Federal Wilderness Boundary
- ▨ County Boundary
- ▨ Private
- ▨ US Forest Service



OPERATIONS

DIV H

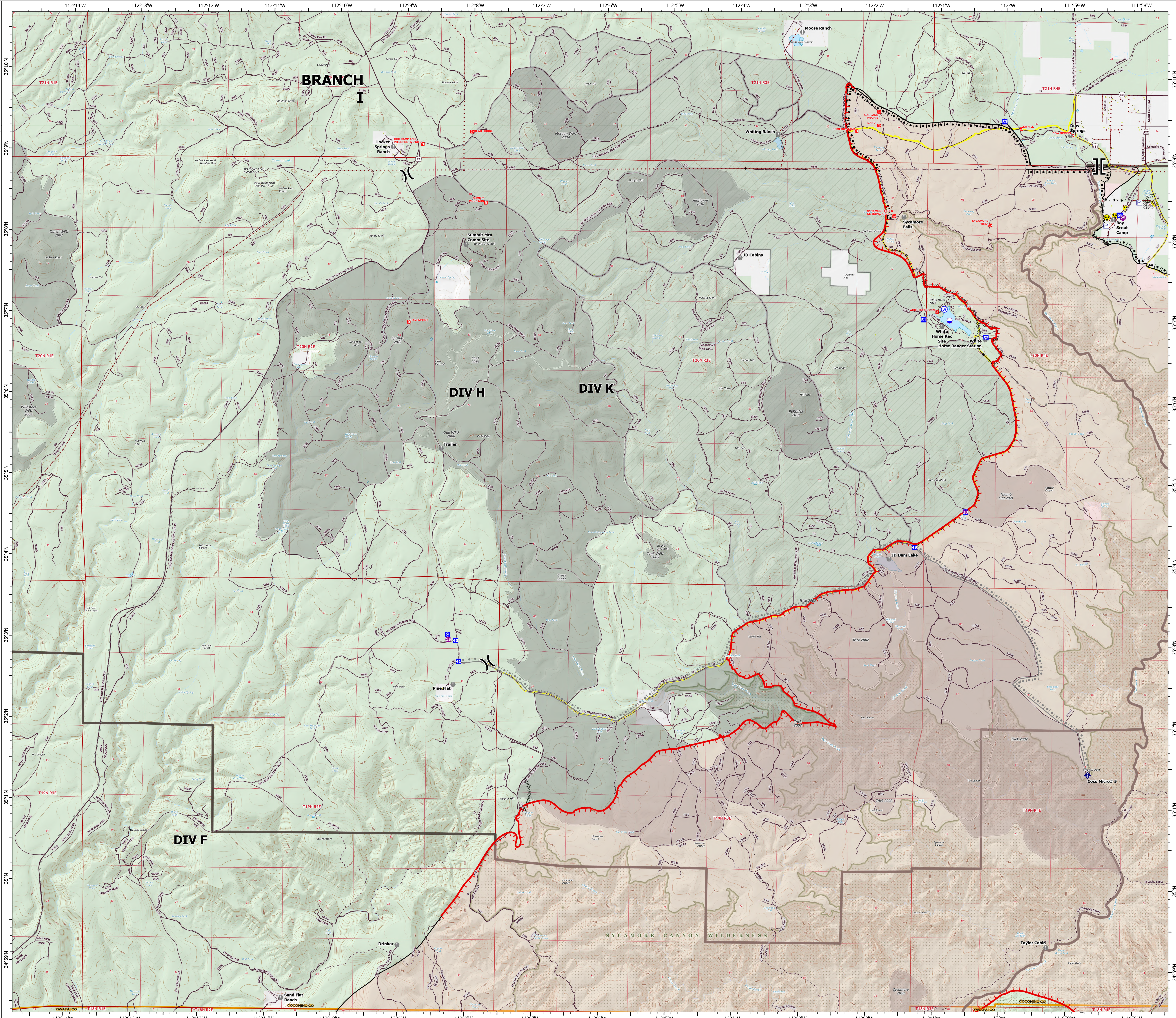
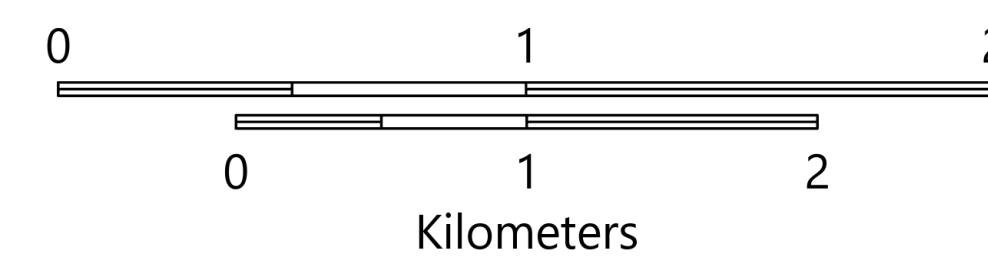
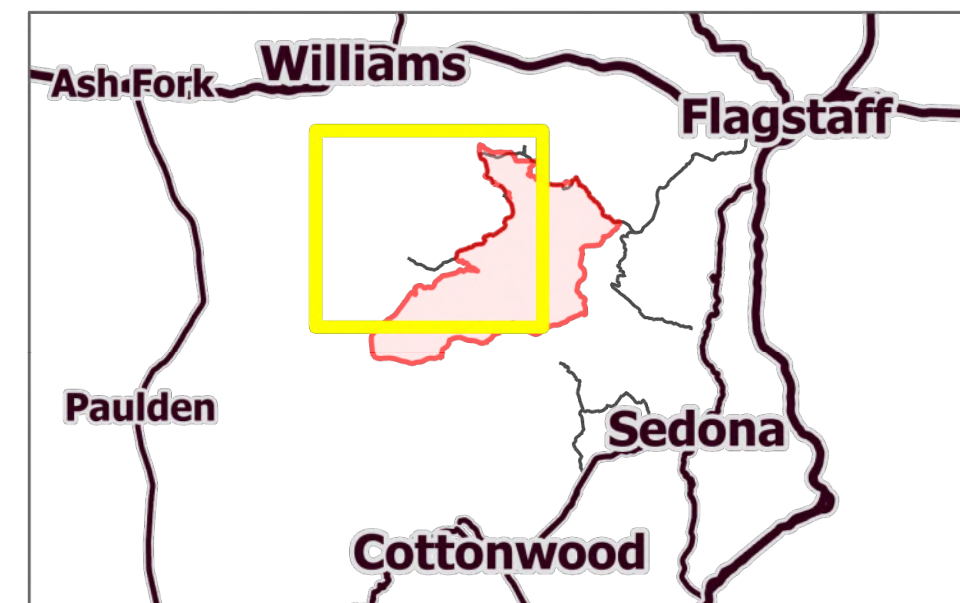
Rafael

AZ-PNF-863

6/28/2021

76,322 acres at 6/27/21 1630 hrs

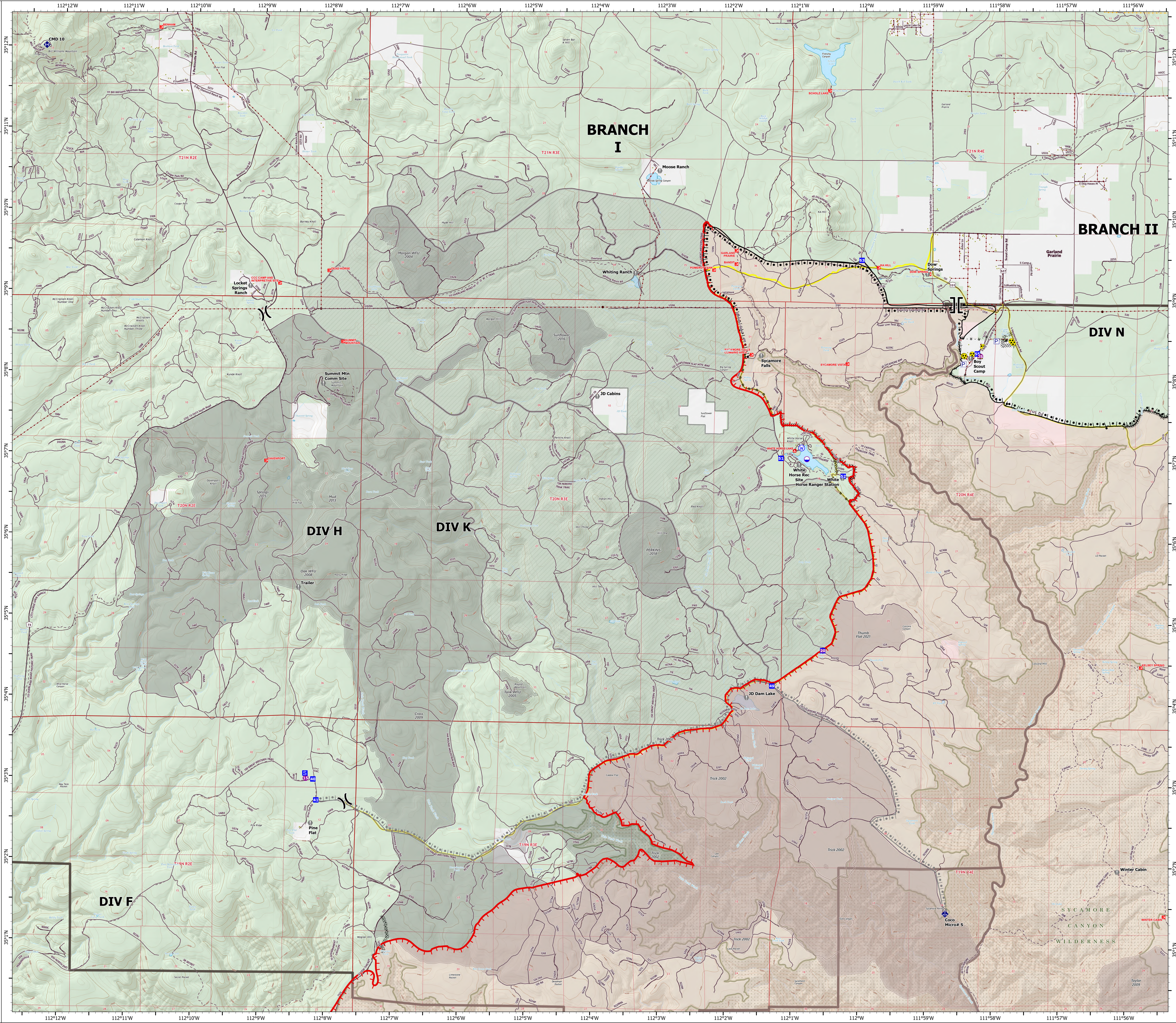
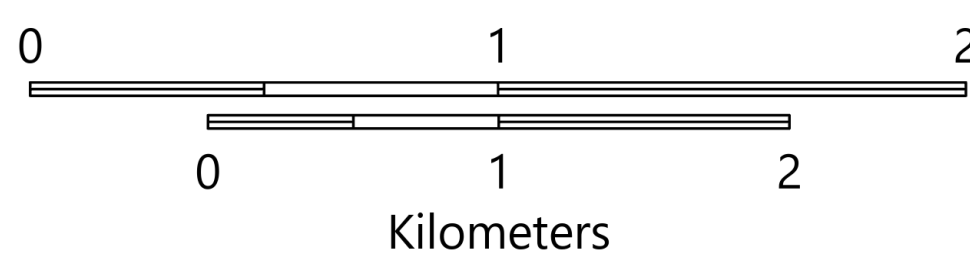
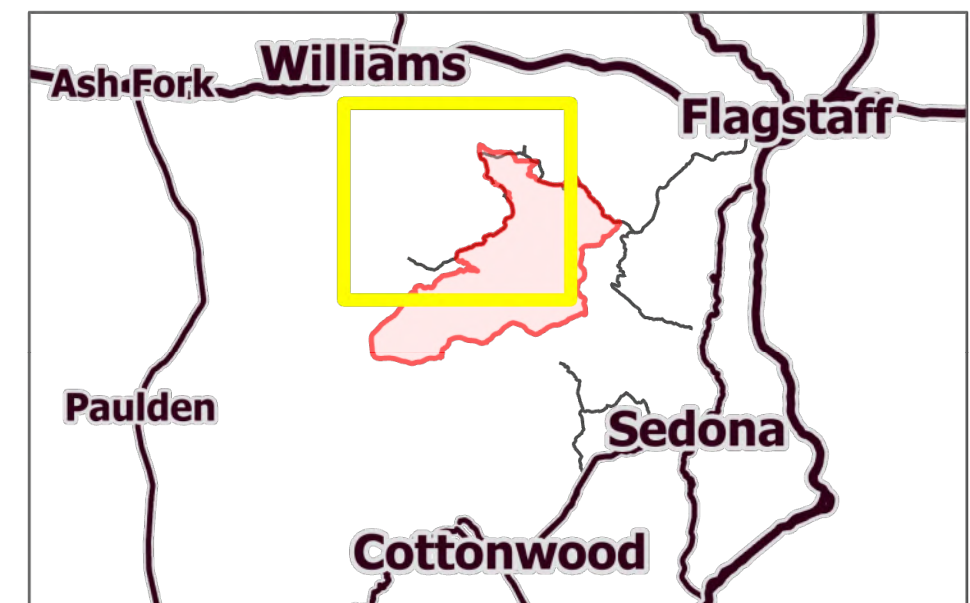
- Dip Site
- Helispot
- Division Break
- Branch Break
- Drop Point
- Staging Area
- Value at Risk
- Mobile Weather Unit
- Safety Zone
- Hazard
- Water Source
- Pump
- Water Tank
- Campground
- Trailhead
- Structure
- Completed Burnout
- Completed Dozer Line
- Completed Hand Line
- Completed Road as Line
- Planned Burnout
- Planned Road as Line
- Planned Secondary Line
- Fire Edge
- Contained Line
- Paved Roads
- Dirt (Not Paved)
- USFS Road
- Access Road
- Trail
- Wildfire Daily Fire Perimeter
- Substation
- Transmission Line
- Fire History
- Administrative FS Boundary
- Federal Wilderness Boundary
- County Boundary
- Private
- US Forest Service



OPERATIONS

DIV K
Rafael
AZ-PNF-863
6/28/2021
76,322 acres at 6/27/21 1630 hrs

- Dip Site
- Helispot
- Division Break
- Branch Break
- Drop Point
- Staging Area
- Value at Risk
- Mobile Weather Unit
- Repeater
- Safety Zone
- Hazard
- Water Source
- Pump
- Water Tank
- Campground
- Trailhead
- Structure
- Completed Burnout
- Completed Dozer Line
- Completed Hand Line
- Completed Road as Line
- Planned Burnout
- Planned Road as Line
- Planned Secondary Line
- Fire Edge
- Contained Line
- Paved Roads
- Dirt (Not Paved)
- USFS Road
- Access Road
- Trail
- Wildfire Daily Fire Perimeter
- Substation
- Transmission Line
- Natural Gas Liquid Pipeline
- Fire History
- Administrative FS Boundary
- Federal Wilderness Boundary
- County Boundary
- Private
- US Forest Service



OPERATIONS

DIV N

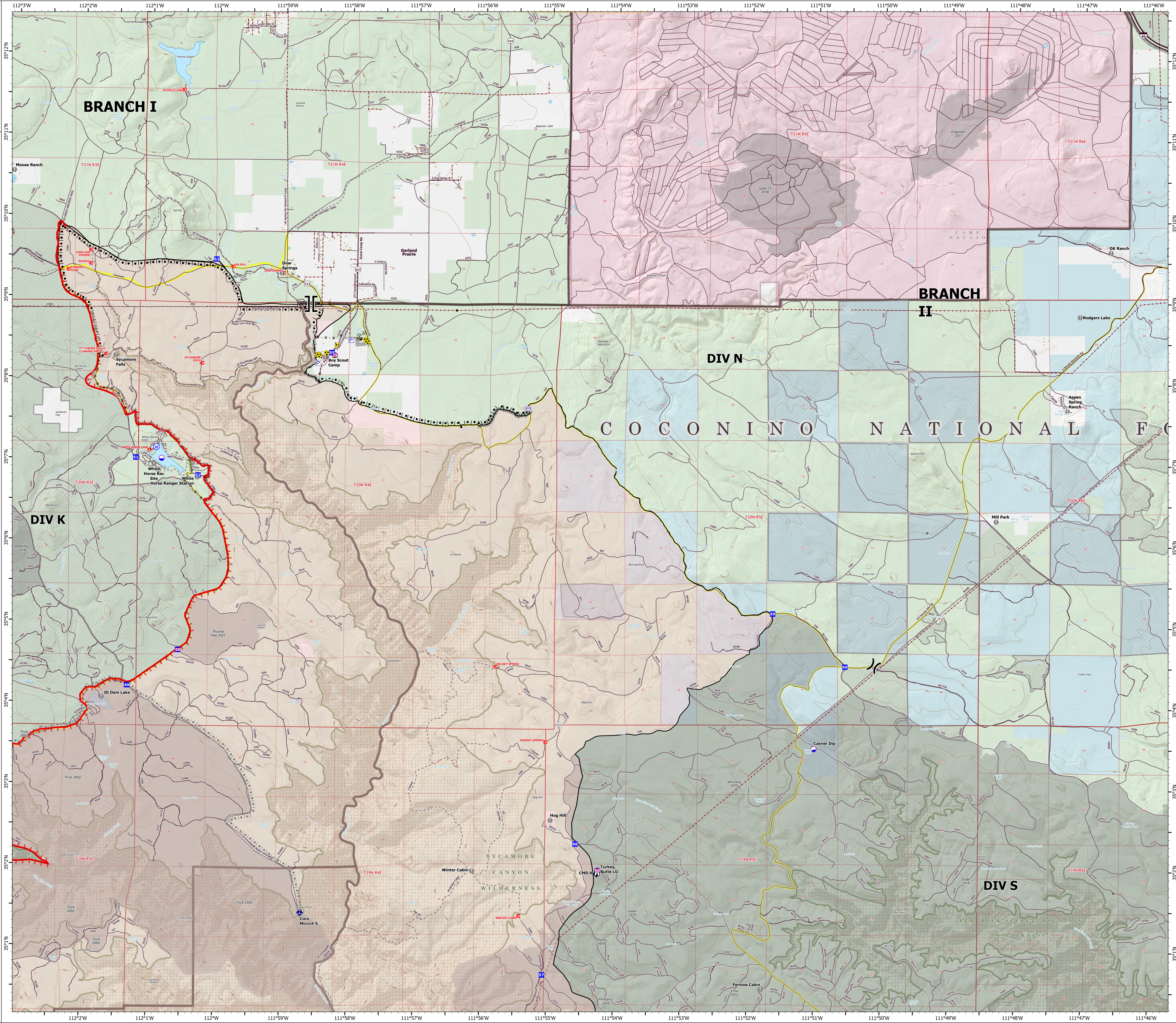
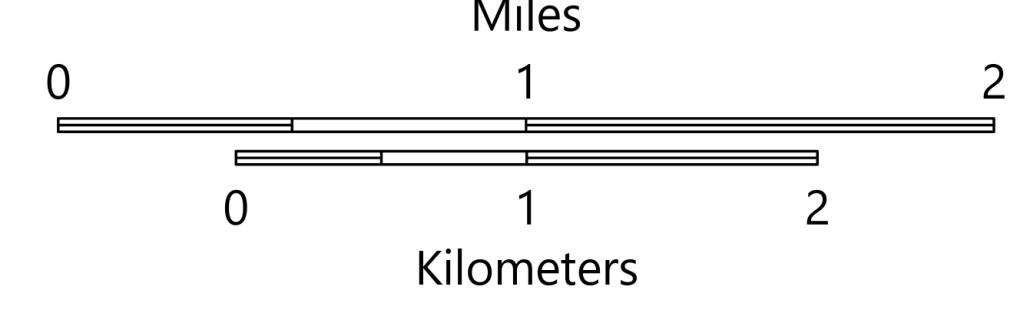
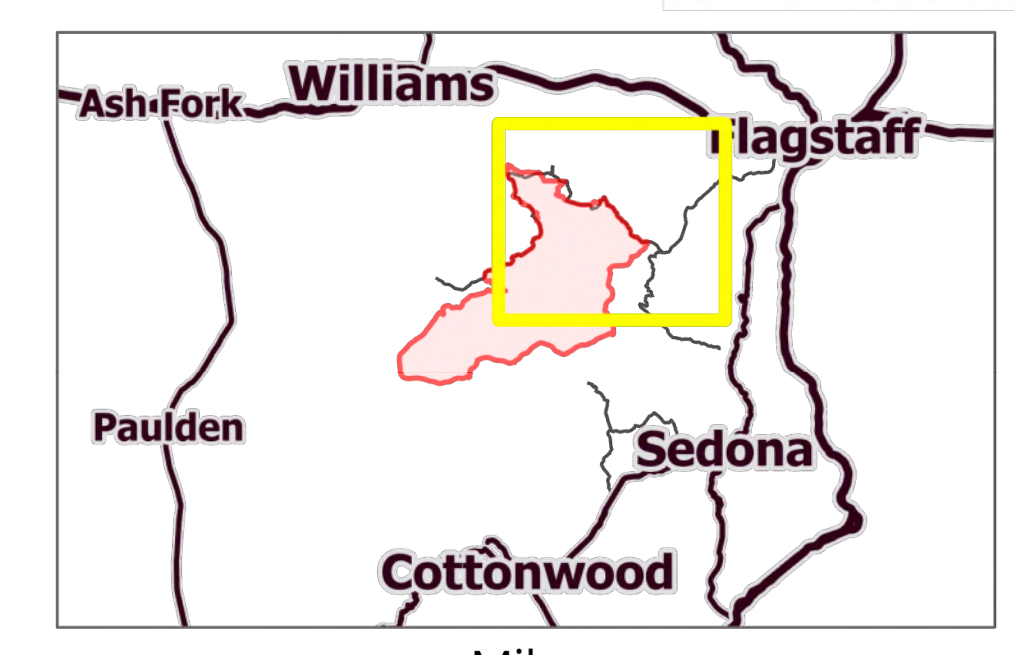
Rafael

AZ-PNF-863

6/28/2021

76,322 acres at 6/27/21 1630 hrs

- Dip Site
- Helispot
- Division Break
- Branch Break
- Drop Point
- Lookout
- Value at Risk
- Mobile Weather Unit
- Repeater
- Safety Zone
- Hazard
- Water Source
- Pump
- Water Tank
- Campground
- Trailhead
- Structure
- Completed Burnout
- Completed Dozer Line
- Completed Hand Line
- Completed Road as Line
- Planned Burnout
- Planned Secondary Line
- Fire Edge
- Contained Line
- Primary Highway
- Paved Roads
- Dirt (Not Paved)
- USFS Road
- Access Road
- Trail
- Railroad
- Wildfire Daily Fire Perimeter
- Substation
- Transmission Line
- Natural Gas Liquid Pipeline
- Oil and Natural Gas Well
- Fire History
- Fuel Treatment
- Administrative FS Boundary
- Federal Wilderness Boundary
- County Boundary
- Military
- Private
- State
- US Forest Service



OPERATIONS

DIV S

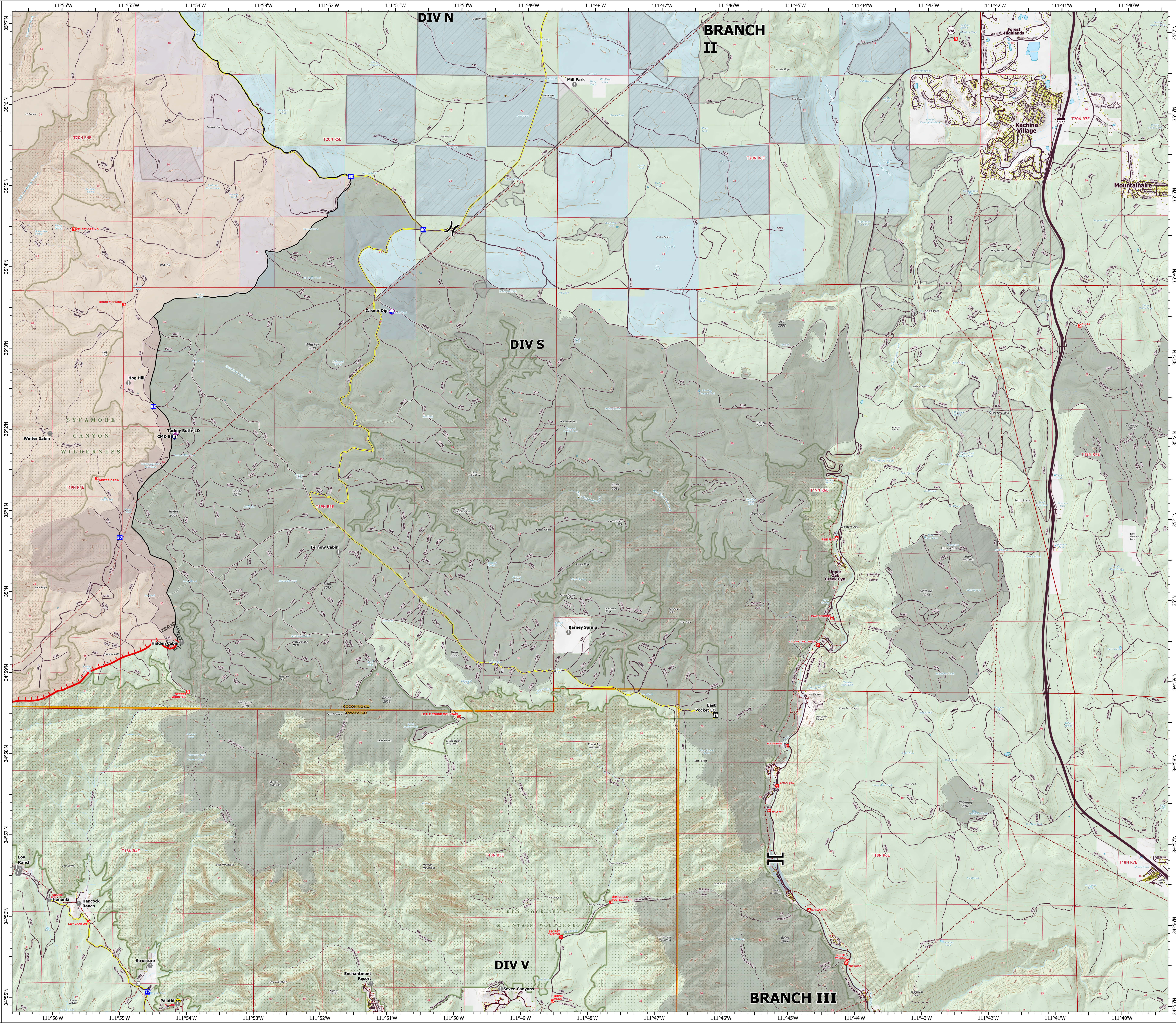
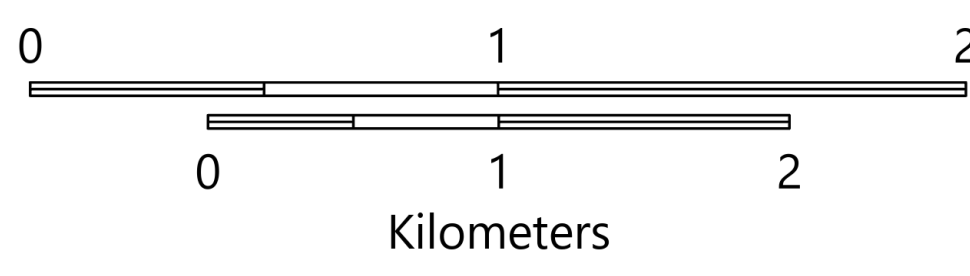
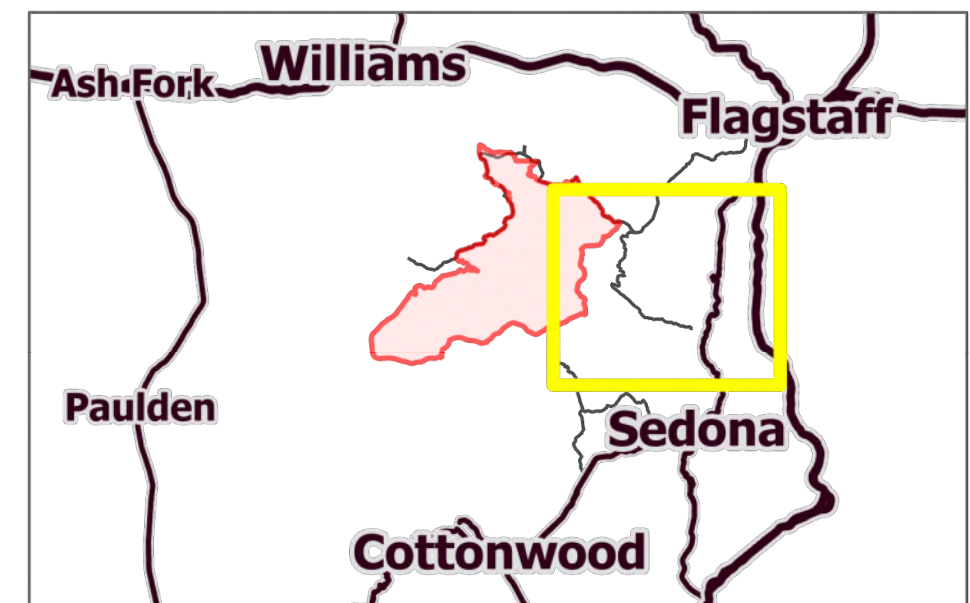
Rafael

AZ-PNF-863

6/28/2021

76,322 acres at 6/27/21 1630 hrs

- Dip Site
- Helispot
- Division Break
- Branch Break
- Drop Point
- Lookout
- Value at Risk
- Gate
- Repeater
- Hazard
- Campground
- Trailhead
- Visitor Center
- Picnic Site
- Interpretive Site
- Structure
- Completed Dozer Line
- Completed Hand Line
- Other
- Fire Edge
- Contained Line
- Primary Highway
- Secondary Highway
- Paved Roads
- Dirt (Not Paved)
- USFS Road
- Access Road
- Trail
- Wildfire Daily Fire Perimeter
- Substation
- Transmission Line
- Oil and Natural Gas Well
- Fire History
- Fuel Treatment
- Administrative FS Boundary
- Federal Wilderness Boundary
- County Boundary
- Local or State Parks
- Private
- State
- US Forest Service



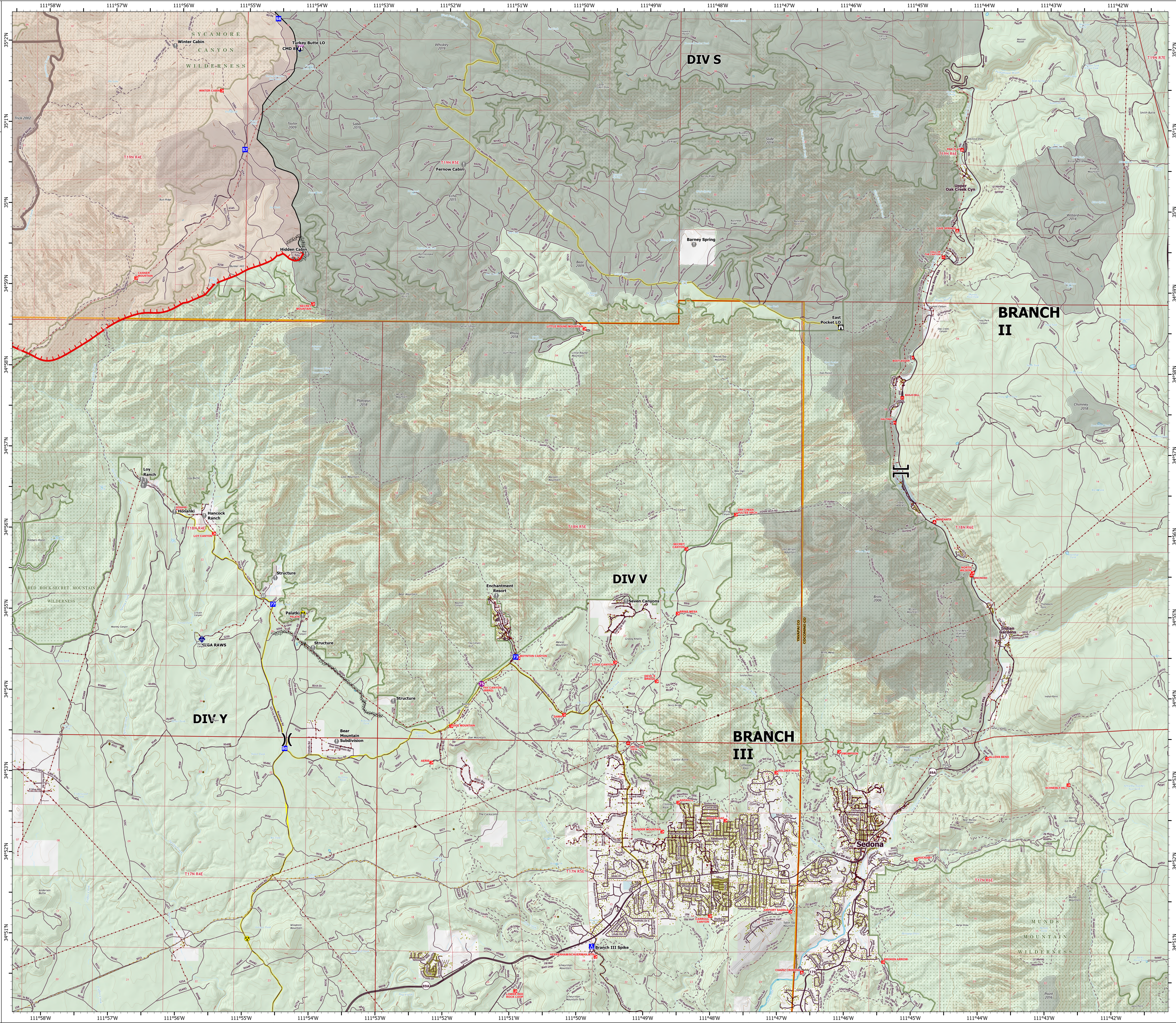
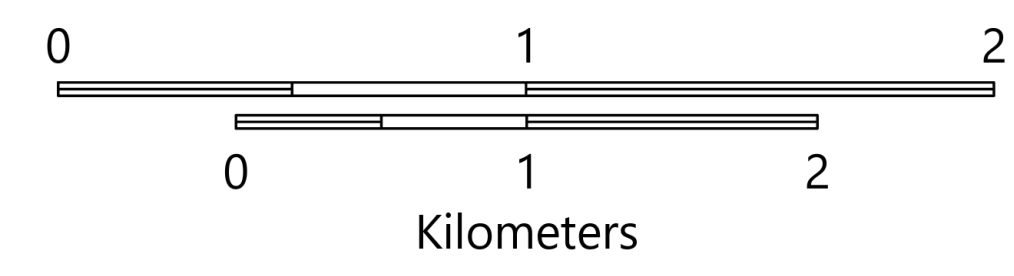
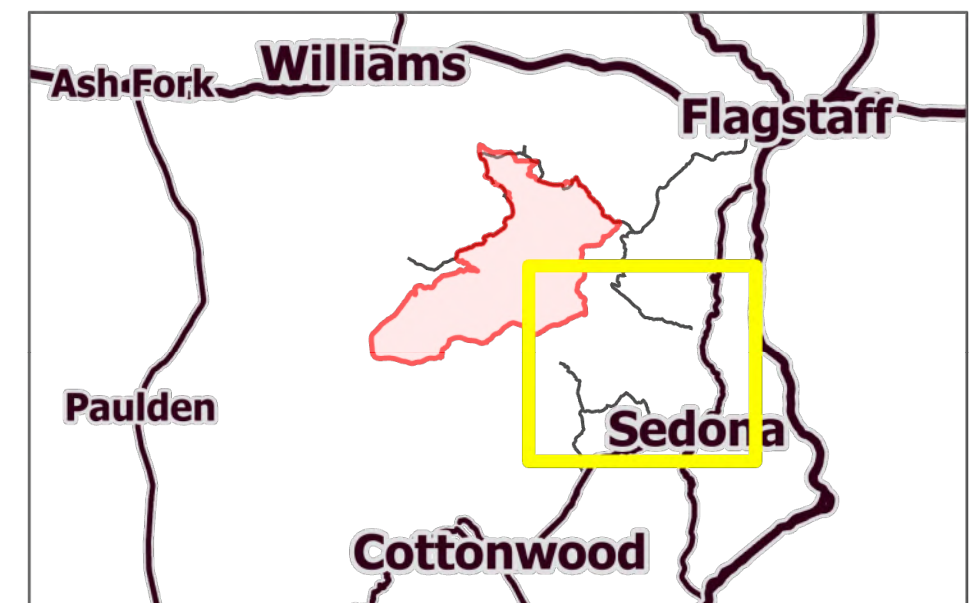
OPERATIONS

DIV V

Rafael
AZ-PNF-863
6/28/2021

76,322 acres at 6/27/21 1630 hrs

- Helispot
- () Division Break
- ⌋ Branch Break
- Drop Point
- ▲ Camp
- Ⓜ Lookout
- ⊕ Value at Risk
- Ⓜ Gate
- Ⓜ Mobile Weather Unit
- Ⓜ Repeater
- Ⓜ Hazard
- Ⓜ Campground
- Ⓜ Trailhead
- Ⓜ Visitor Center
- Ⓜ Picnic Site
- Ⓜ Interpretive Site
- Structure
- Ⓜ Completed Dozer Line
- Ⓜ Completed Hand Line
- Ⓜ Other
- Ⓜ Fire Edge
- Ⓜ Contained Line
- Ⓜ Primary Highway
- Ⓜ Secondary Highway
- Ⓜ Paved Roads
- Ⓜ Dirt (Not Paved)
- Ⓜ USFS Road
- Ⓜ Access Road
- Ⓜ Trail
- Ⓜ Tunnel; Bridge
- Ⓜ Runway
- Ⓜ Wildfire Daily Fire Perimeter
- Ⓜ Substation
- Ⓜ Transmission Line
- Ⓜ Oil and Natural Gas Well
- Ⓜ Oil and Natural Gas Pipeline
- Ⓜ Fire History
- Ⓜ Fuel Treatment
- Ⓜ Administrative FS Boundary
- Ⓜ Federal Wilderness Boundary
- Ⓜ County Boundary
- Ⓜ County
- Ⓜ Local or State Parks
- Ⓜ Other Federal
- Ⓜ Private
- Ⓜ State
- Ⓜ US Forest Service



OPERATIONS

DIV Y
Rafael
AZ-PNF-863
6/28/2021
76,322 acres at 6/27/21 1630 hrs

- Dip Site
- Helispot
- Division Break
- Branch Break
- Drop Point
- Camp
- Value at Risk
- Gate
- Mobile Weather Unit
- Hazard
- Trailhead
- Visitor Center
- Interpretive Site
- Structure
- Completed Dozer Line
- Completed Hand Line
- Other
- Fire Edge
- Contained Line
- Secondary Highway
- Paved Roads
- Dirt (Not Paved)
- USFS Road
- Access Road
- Trail
- Railroad
- Wildfire Daily Fire Perimeter
- Substation
- Transmission Line
- Oil and Natural Gas Well
- Oil and Natural Gas Pipeline
- Fire History
- Administrative FS Boundary
- Federal Wilderness Boundary
- County Boundary
- Local or State Parks
- Private
- US Forest Service

