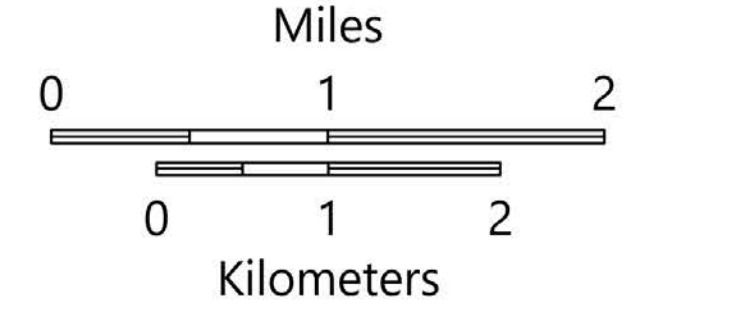


# SUPPRESSION REPAIR North

Rafael  
AZ-PNF-863  
6/29/2021  
78,709 acres  
at 6/28/21 2140 hrs

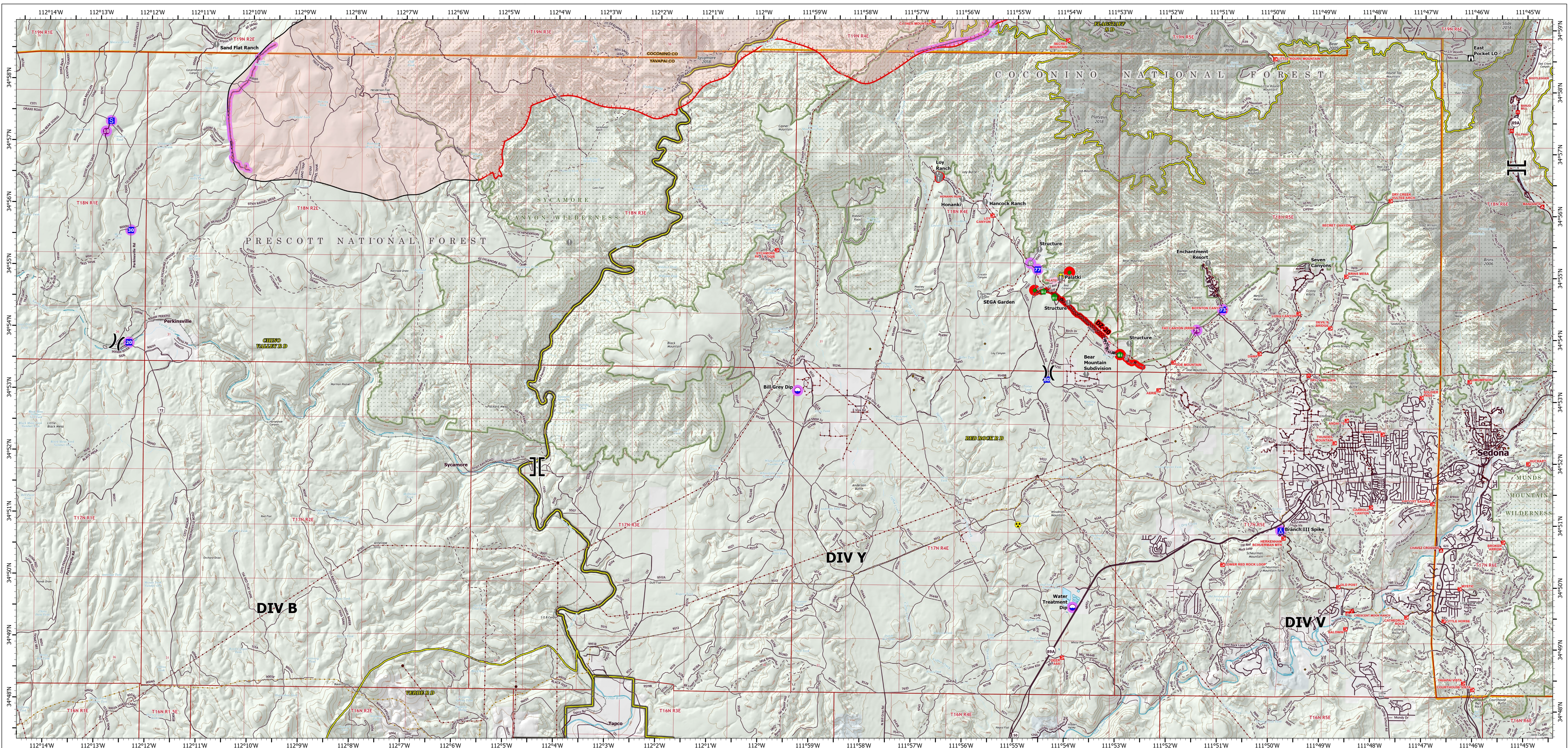


- |  |  |   |   |
|--|--|---|---|
| <ul style="list-style-type: none"> <li>Repair Status Line</li> <li>In Use - Fire Management</li> <li>Repair Needed</li> <li>No Repair Needed</li> <li>Unknown</li> <li>Repair Status Point</li> <li>No Repair Needed</li> <li>Unknown</li> <li>Hellspot</li> <li>Dip Site</li> <li>Water Tank</li> <li>Division Break</li> <li>Branch Break</li> <li>Drop Point</li> </ul> | <ul style="list-style-type: none"> <li>Staging Area</li> <li>Lookout</li> <li>Value at Risk</li> <li>Repair Point</li> <li>Fence - Cut/Damaged</li> <li>Mobile Weather Unit</li> <li>Repeater</li> <li>Safety Zone</li> <li>Hazard</li> <li>Water Source</li> <li>Pump</li> <li>Water Tank</li> <li>Completed Burnout</li> <li>Completed Dozer Line</li> </ul> | <ul style="list-style-type: none"> <li>H - H Completed Hand Line</li> <li>R - R Completed Road as Line</li> <li>Repair Line</li> <li>Retardant Drop</li> <li>Fire Edge</li> <li>Contained Line</li> <li>Secondary Highway</li> <li>Paved Roads</li> <li>Dirt (Not Paved)</li> <li>USFS Road</li> <li>Trail</li> <li>Wildfire Daily Fire Perimeter</li> <li>Substation</li> <li>Transmission Line</li> </ul> | <ul style="list-style-type: none"> <li>Oil and Natural Gas Well</li> <li>Fire History</li> <li>Fuel Treatment</li> <li>Ranger District Boundary</li> <li>Administrative FS Boundary</li> <li>Federal Wilderness Boundary</li> <li>County Boundary</li> <li>Military</li> <li>Private</li> <li>State</li> <li>US Forest Service</li> </ul> |
|--|--|---|---|

FC Point Type	Label	Repair Status	Repair Comments	Comments	Latitude	Longitude
Dip Site	Casner Dip	Unknown		White Horse Lake - Type 1 accessible Type 1 with snorkel can fit if the water is deep enough in middle	35° 02'05" N	112° 00' 82" W
Drop Point	40	Unknown			35° 01' 49" N	112° 01' 01" W
Drop Point	41	Unknown			35° 03' 00" N	112° 08' 18" W
Drop Point	49	Unknown			35° 04' 26" N	112° 01' 32" W
Drop Point	51	Unknown			35° 07' 01" N	112° 01' 21" W
Drop Point	52	No Repair Needed	Internal slash in area, no repair needed.		35° 06' 29" N	112° 00' 28" W
Drop Point	53	No Repair Needed			35° 09' 40" N	112° 00' 02" W
Drop Point	55	Repair Needed	trash and flagging needs to be pulled		35° 08' 32" N	112° 58' 28" W
Drop Point	57	Unknown			35° 00' 57" N	112° 55' 02" W
Drop Point	58	Unknown			35° 04' 68" N	112° 00' 58" W
Drop Point	59	Unknown			35° 05' 15" N	112° 51' 64" W
Drop Point	60	Unknown			35° 04' 50" N	112° 50' 55" W
Fence - Cut/Damaged		Repair Needed	Burnout operation damaged fence. Needs supplies for repairs.		35° 08' 49" N	112° 51' 56" W
Fence - Cut/Damaged		Repair Needed	Need minimal supplies		35° 07' 15" N	112° 00' 54" W
Fence - Cut/Damaged		Repair Needed	cut fence along 125 rd at cattergoad	outside private boundary/in permittee horse pasture?	35° 01' 50" N	112° 08' 25" W
Hellspot	15	Unknown		Approved type 2 and 3	35° 03' 01" N	112° 08' 29" W
Hellspot	20	Unknown		Approved type 2 and 3	35° 04' 68" N	112° 00' 56" W
Hellspot	25	Repair Needed	Pull flagging	Approved type 2 and 3. Caution powerlines and fence posts.	35° 08' 29" N	112° 50' 24" W
Hellspot	60	Unknown		Type 2 & 3.	35° 01' 57" N	112° 56' 26" W
Repair Point		Repair Needed	end stake - disguise to not look like connector trail. pull rocks, cliff over intersection and down to edge of rocks approx. 50'		35° 08' 34" N	112° 58' 74" W
Repair Point		Repair Needed	Log and scatter interior		35° 09' 40" N	112° 00' 09" W
Repair Point		Repair Needed	Flagged pink w. black polka dots. Disguise dozer line from designated trail.		35° 01' 00" N	112° 00' 36" W
Repair Point		Repair Needed	Ensure private gates are closed or left as before at entrance to BOC.		35° 01' 00" N	112° 58' 47" W
Repair Point		Repair Needed	Flagged pink w. black polka dots. Sycamore Point trail was obliterated by dozer line here.		35° 06' 29" N	112° 00' 40" W
Repair Point		Repair Needed	Slash should be scattered, partially cut trail should be filled and topped/cattered		35° 01' 29" N	112° 00' 52" W
Repair Point		Repair Needed	Log and scatter in old log landing		35° 09' 42" N	112° 00' 62" W
Repair Point		Repair Needed	heavy slash chipping needed from this point to JD dam		35° 08' 80" N	112° 57' 61" W
Repair Point		Repair Needed	remove tree and replace 1 post	dozer damaged tree outside fence and damaged fence on private boundary. tree overhangs fence	35° 02' 46" N	112° 08' 35" W
Repair Point		Repair Needed	ensure closure to avoid vehicle use towards private parcel		35° 02' 42" N	112° 08' 07" W
Repair Point		Repair Needed	Disguise the line running downhill toward the old road. pull rocks across.	spur off dozer line into non MVM fence	35° 01' 00" N	112° 00' 33" W
Repair Point		Repair Needed	chip slash along road		35° 05' 41" N	112° 59' 91" W
Repair Point		Repair Needed	Disguise small handline around spot along W side 125 rd		35° 01' 80" N	112° 06' 94" W
Repair Point		Repair Needed	chip slash		35° 06' 47" N	112° 00' 52" W
Repair Point		Repair Needed	small handline by 125 rd around spot		35° 01' 29" N	112° 06' 93" W
Staging Area		Unknown		Large field, good for spike if needed	35° 03' 07" N	112° 08' 30" W

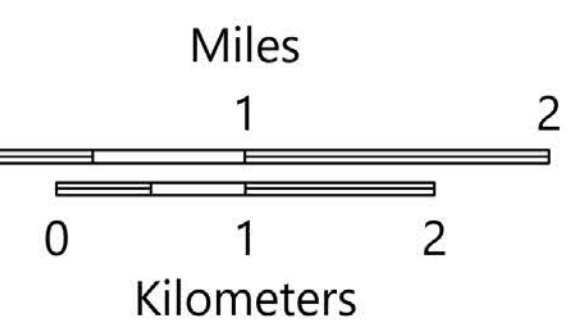
FC Line Type	Label	Repair Status	Repair Comments	Comments	Latitude	Longitude
Completed Burnout		No Repair Needed		Two track of road to hold burn out. No identifier on. Part of road camp infrastructure	35° 01' 49" N	112° 01' 01" W
Completed Burnout		Unknown			35° 03' 00" N	112° 08' 18" W
Completed Burnout		Unknown			35° 04' 26" N	112° 01' 32" W
Completed Burnout		Unknown			35° 07' 01" N	112° 01' 21" W
Completed Burnout		Unknown			35° 06' 29" N	112° 00' 28" W
Completed Burnout		Unknown			35° 09' 40" N	112° 00' 02" W
Completed Burnout		Unknown			35° 08' 32" N	112° 58' 28" W
Completed Burnout		Unknown			35° 00' 57" N	112° 55' 02" W
Completed Burnout		Unknown			35° 04' 68" N	112° 00' 58" W
Completed Burnout		Unknown			35° 05' 15" N	112° 51' 64" W
Completed Burnout		Unknown			35° 04' 50" N	112° 50' 55" W
Completed Burnout		Repair Needed			35° 07' 15" N	112° 00' 54" W
Completed Burnout		Repair Needed			35° 01' 50" N	112° 08' 25" W
Completed Burnout		Repair Needed			35° 03' 01" N	112° 08' 29" W
Completed Burnout		Repair Needed			35° 04' 68" N	112° 00' 56" W
Completed Burnout		Repair Needed			35° 08' 29" N	112° 50' 24" W
Completed Burnout		Repair Needed			35° 01' 57" N	112° 56' 26" W
Completed Burnout		Repair Needed			35° 08' 34" N	112° 58' 74" W
Completed Burnout		Repair Needed			35° 09' 40" N	112° 00' 09" W
Completed Burnout		Repair Needed			35° 01' 00" N	112° 00' 36" W
Completed Burnout		Repair Needed			35° 01' 00" N	112° 58' 47" W
Completed Burnout		Repair Needed			35° 06' 29" N	112° 00' 40" W
Completed Burnout		Repair Needed			35° 01' 29" N	112° 00' 52" W
Completed Burnout		Repair Needed			35° 09' 42" N	112° 00' 62" W
Completed Burnout		Repair Needed			35° 08' 80" N	112° 57' 61" W
Completed Burnout		Repair Needed			35° 02' 46" N	112° 08' 35" W
Completed Burnout		Repair Needed			35° 02' 42" N	112° 08' 07" W
Completed Burnout		Repair Needed			35° 01' 00" N	112° 00' 33" W
Completed Burnout		Repair Needed			35° 05' 41" N	112° 59' 91" W
Completed Burnout		Repair Needed			35° 01' 80" N	112° 06' 94" W
Completed Burnout		Repair Needed			35° 06' 47" N	112° 00' 52" W
Completed Burnout		Repair Needed			35° 01' 29" N	112° 06' 93" W
Completed Burnout		Repair Needed			35° 03' 07" N	112° 08' 30" W

Feature Category (Point Type)	Label	Repair Status	Comments	Latitude WGS84 DDM	Longitude WGS84 DDM
Pump		Unknown	At pond south camp. West side of pond.	35° 08' 19" N	112° 58' 49" W
Pump		Unknown	Water supply for Mantorola residence sprinklers and engine fill	35° 08' 48" N	112° 58' 00" W
Pump		Unknown		35° 08' 48" N	112° 58' 00" W
Water Tank		Unknown	Pumpkin 3000 gallons, filling off of Mantorola residence well	35° 08' 48" N	112° 58' 00" W
Water Tank		Unknown	3000 Gallon pumpkin	35° 07' 65" N	112° 55' 33" W
Water Tank		Unknown		35° 02' 34" N	112° 05' 18" W
Water Tank		Unknown	1800 GAL Pumpkin	35° 03' 23" N	112° 03' 84" W
Water Tank		Unknown	Pumpkin	35° 02' 37" N	112° 07' 01" W



# SUPPRESSION REPAIR *South*

Rafael  
 AZ-PNF-863  
 6/29/2021  
 78,709 acres  
 at 6/28/21 2140 hrs



- |   |  |  |  |
|---|--|--|--|
| <ul style="list-style-type: none"> <li>Repair Status Line</li> <li>In Use - Fire Management</li> <li>Repair Needed</li> <li>Unknown</li> <li>Repair Status Point</li> <li>In Use - Fire Management</li> <li>Repair Needed</li> <li>Unknown</li> <li>Hellspot</li> <li>Dip Site</li> <li>Division Break</li> <li>Branch Break</li> <li>Drop Point</li> </ul> | <ul style="list-style-type: none"> <li>Camp</li> <li>Staging Area</li> <li>Lookout</li> <li>Value at Risk</li> <li>Gate</li> <li>Repair Point</li> <li>Fence - Cut/Damaged</li> <li>Hazard</li> <li>Completed Dozer Line</li> <li>Completed Hand Line</li> <li>Completed Road as Line</li> </ul> | <ul style="list-style-type: none"> <li>Fire Edge</li> <li>Contained Line</li> <li>Secondary Highway</li> <li>Paved Roads</li> <li>Dirt (Not Paved)</li> <li>USFS Road</li> <li>Trail</li> <li>Tunnel; Bridge</li> <li>Railroad</li> <li>Runway</li> <li>Wildfire Daily Fire Perimeter</li> <li>Other</li> <li>Transmission Line</li> </ul> | <ul style="list-style-type: none"> <li>Oil and Natural Gas Well</li> <li>Oil and Natural Gas Pipeline</li> <li>Fire History</li> <li>Ranger District Boundary</li> <li>Administrative FS Boundary</li> <li>Federal Wilderness Boundary</li> <li>County Boundary</li> <li>County</li> <li>Local or State Parks</li> <li>Other Federal</li> <li>Private</li> <li>State</li> <li>US Forest Service</li> </ul> |
|---|--|--|--|

FC Point Type	Label	Repair Status	Repair Comments	Comments	Latitude	Longitude
Camp	Branch III Spike	Unknown			34° 50.894' N	111° 49.771' W
Dip Site	Bill Grey Dip	Unknown		Bucket with longline only. Structures adjacent.	34° 53.089' N	111° 59.267' W
Dip Site	Water Treatment Dip	Unknown			34° 49.628' N	111° 53.841' W
Drop Point	20	Unknown			34° 53.749' N	112° 12.386' W
Drop Point	30	Unknown			34° 55.563' N	112° 12.375' W
Drop Point	73	Unknown			34° 54.456' N	111° 50.943' W
Drop Point	77	Unknown			34° 55.081' N	111° 54.583' W
Drop Point	80	In Use - Fire Management		JNez for Pat Moore MESA IHC proposed drop point	34° 53.304' N	111° 54.385' W
Fence - Cut/Damaged		Repair Needed		Cut fence for dozer access JNez ARCH	34° 53.717' N	111° 52.950' W
Fence - Cut/Damaged		In Use - Fire Management		needs repair	34° 54.726' N	111° 54.464' W
Fence - Cut/Damaged		In Use - Fire Management		needs repair JNez ARCH	34° 54.647' N	111° 54.249' W
Fence - Cut/Damaged		In Use - Fire Management		dozer rolled over, wooden lathes need to be replaced	34° 54.627' N	111° 54.249' W
Gate		Unknown		Locked	34° 55.182' N	111° 54.723' W
Hellspot	10	Unknown		Needs dust abatement. Type 2 and 3	34° 57.156' N	112° 12.879' W
Hellspot	75	Unknown		type 3 only Fay canyon trailhead parking lot. 1/2 acre paved parking lot.	34° 54.120' N	111° 51.450' W
Repair Point		Repair Needed		scatter over wider area or remove	34° 55.040' N	111° 53.957' W
Repair Point		Repair Needed		Place boulders to prevent OHV	34° 54.744' N	111° 54.636' W
Staging Area		Unknown		Staging Area	34° 57.326' N	112° 12.781' W

FC Line Type	Label	Repair Status	Repair Comments	Comments	Length Feet
Completed Dozer Line	DZ-20	Repair Needed	will need water bars, berms pulled, slash pulled back across line,	multiple drainage crossings, buried telephones JNez	9341
Completed Dozer Line	DZ-21	Repair Needed	obliterate berm, pull slash overline, needs ARCH monitor	masticated 6/25	2165
Completed Hand Line	H-5	Repair Needed			1657
Completed Hand Line	H-6	Repair Needed			315
Completed Hand Line	H-7	Repair Needed	obliterate berm, scatter slash on line	handline	235
Completed Hand Line	H-8	Repair Needed	needs ARCH	needs arch to repair	104
Completed Hand Line	H-9	Repair Needed			73
Completed Road as Line		In Use - Fire Management	scatter or chip slash		2656
Completed Road as Line		Repair Needed		scatter or chip slash	2831
Other		In Use - Fire Management	None	Trail as line, fuel break	1373
Retardant Drop		Unknown			15105
Retardant Drop		Unknown			2486
Retardant Drop		Unknown			11474
Retardant Drop		Unknown			201
Retardant Drop		Unknown			2511