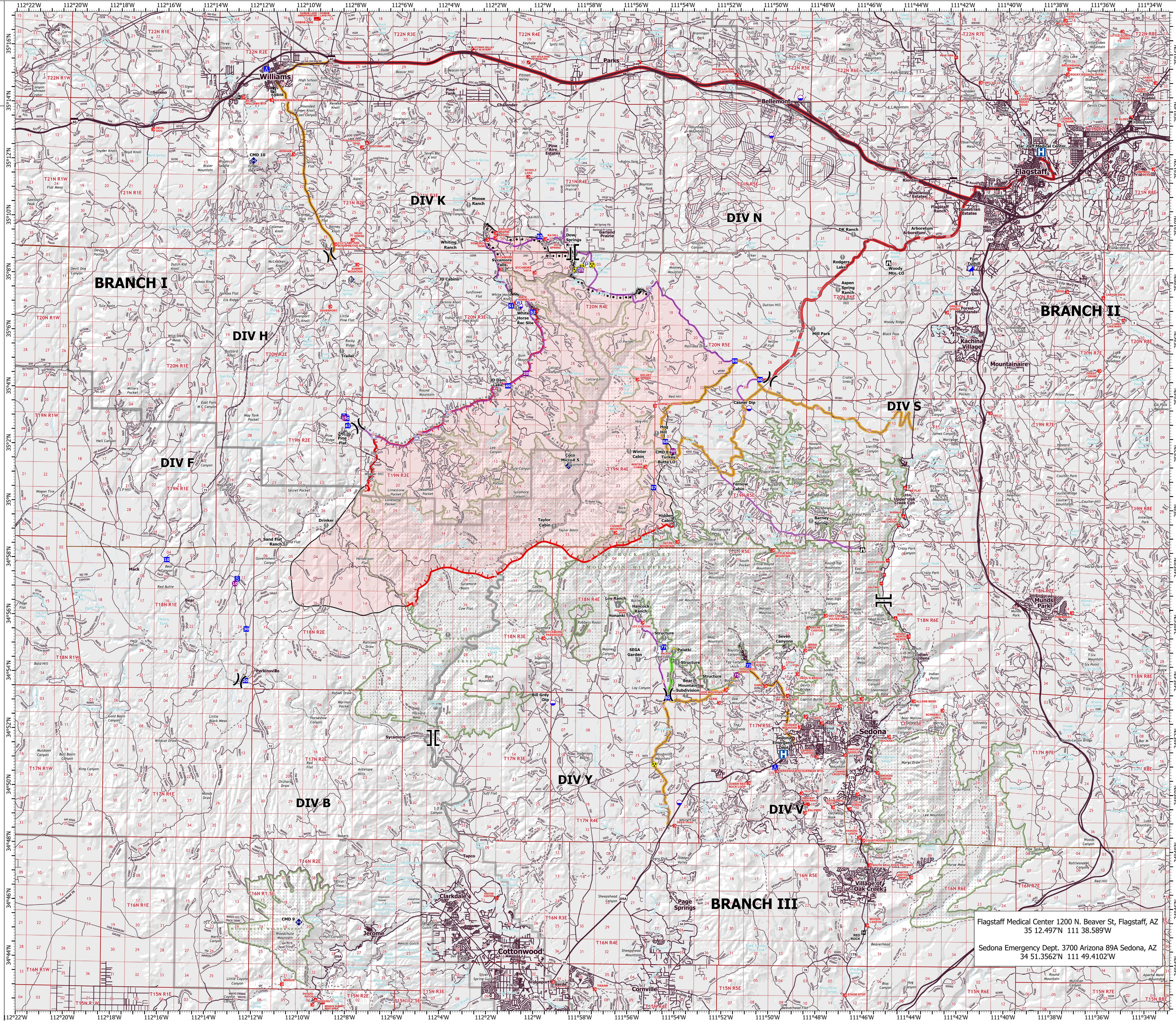
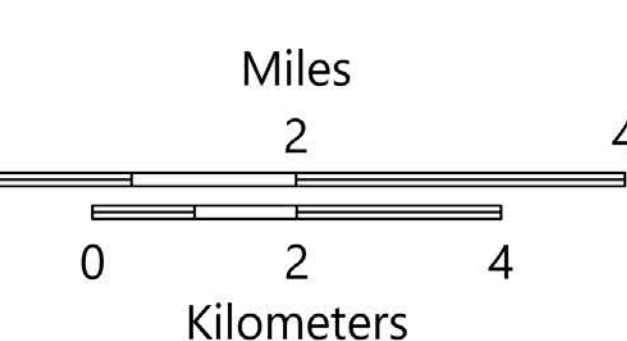
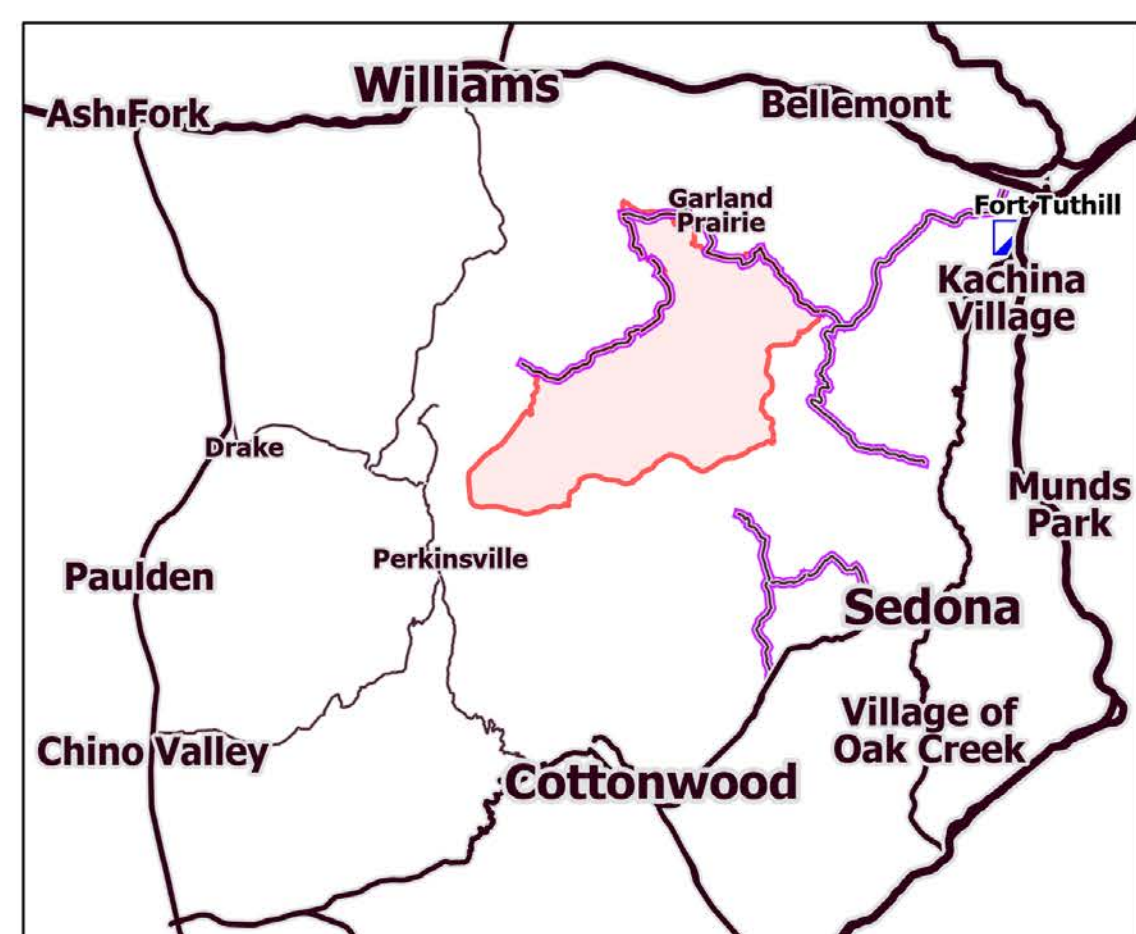


TRANSPORTATION

Rafael
AZ-PNF-863
6/29/2021

78,708 acres at 6/28/21 1300 hrs

- Medical Transport Routes
 - less than 15 minutes
 - more than 15 minutes
 - 30-65minutes
- Dip Site
- Helispot
- Division Break
- Branch Break
- Incident Command Post
- Drop Point
- Camp
- Staging Area
- Lookout
- Value at Risk
- Gate
- Mobile Weather Unit
- Repeater
- Safety Zone
- Hazard
- Water Source
- Primary Highway
- Secondary Highway
- Paved Roads
- Dirt (Not Paved)
- Access Road
- Trail
- Tunnel; Bridge
- Railroad
- Completed Burnout
- Completed Dozer Line
- Completed Hand Line
- Completed Road as Line
- Planned Burnout
- Planned Road as Line
- Planned Secondary Line
- Other
- Fire Edge
- Contained Line
- Wildfire Daily Fire Perimeter



Flagstaff Medical Center 1200 N. Beaver St, Flagstaff, AZ
35 12.497'N 111 38.589'W
Sedona Emergency Dept. 3700 Arizona 89A Sedona, AZ
34 51.3562'N 111 49.4102'W