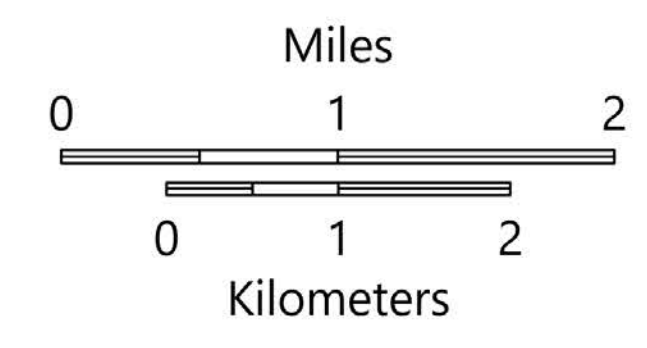


# SUPPRESSION REPAIR North

Rafael  
AZ-PNF-863  
6/30/2021  
78,709 acres  
at 6/29/21 2115 hrs



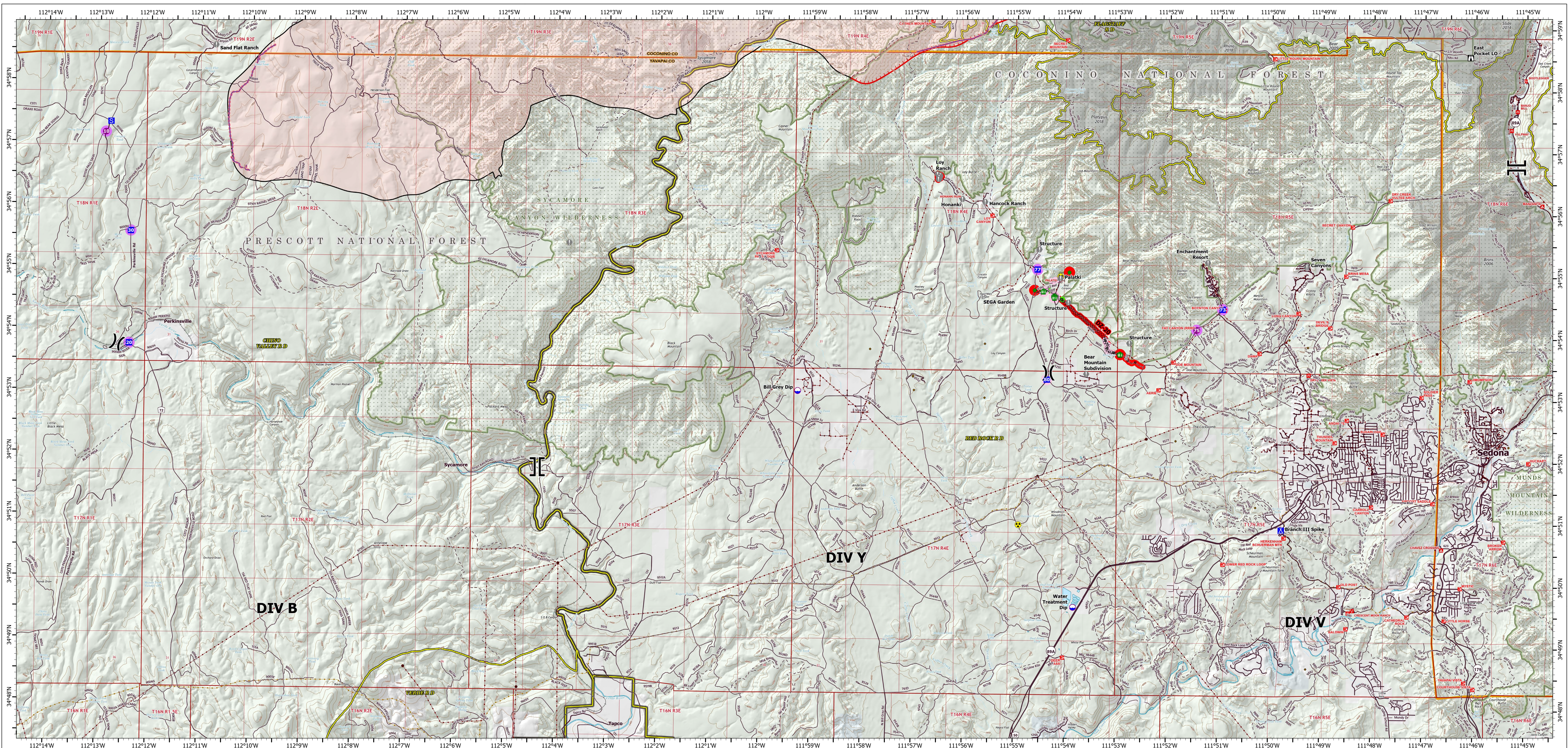
- In Use - Fire Management
- Repair Needed
- No Repair Needed
- Unknown
- Repair Needed
- No Repair Needed
- Unknown
- Helispot
- Dip Site
- ) Division Break
- | Branch Break
- Drop Point
- Staging Area
- Lookout
- Value at Risk
- Repair Point
- Hazard Tree
- Fence - Cut/Damaged
- Mobile Weather Unit
- Repeater
- Safety Zone
- Hazard
- Water Source
- Pump
- Water Tank
- Completed Burnout
- Completed Dozer Line
- H - H Completed Hand Line
- R - R Completed Road as Line
- Repair Line
- Retardant Drop
- Fire Edge
- Contained Line
- Secondary Highway
- Paved Road
- Dirt (Not Paved)
- USFS Road
- Trail
- Wildfire Daily Fire Perimeter
- Substation
- Oil and Natural Gas Well
- Fire History
- Fuel Treatment
- Ranger District Boundary
- Administrative FS Boundary
- Federal Wilderness Boundary
- County Boundary
- Military
- Private
- State
- US Forest Service

FC Point Type	Label	Dropair Status	Repair Comments	Comments	Latitude	Longitude
Drop Point	10	Unknown			34°57.965' N	112°15.295' W
Drop Point	40	No Repair Needed			35°03.001' N	112°08.183' W
Drop Point	41	No Repair Needed			35°02.243' N	112°08.136' W
Drop Point	42	No Repair Needed	No repair		35°04.206' N	112°01.320' W
Drop Point	50	No Repair Needed		Gravelled pullout along 105 rd, for sycamore canyon bike trail.	35°04.648' N	112°05.563' W
Drop Point	51	No Repair Needed		No disturbance	35°07.013' N	112°01.217' W
Drop Point	52	Repair Needed	Minimal slash in this area, no repair needed.	White Horse Rec Residences	35°08.292' N	112°00.382' W
Drop Point	53	Repair Needed		56/13 rd junction	35°09.463' N	112°00.032' W
Drop Point	55	Repair Needed	trash and flagging needs to be pulled	Boy Scout Camp	35°08.324' N	112°08.288' W
Drop Point	57	Unknown			35°08.578' N	112°05.842' W
Drop Point	58	Unknown			35°02.295' N	112°04.570' W
Drop Point	59	Unknown			35°05.153' N	112°01.644' W
Drop Point	60	Unknown			35°04.265' N	112°00.354' W
Fence - Cut/Damaged		Repair Needed	Burnout operation damaged fence. Needs supplies for repairs.		35°08.466' N	112°00.563' W
Fence - Cut/Damaged		Repair Needed	Need minimal supplies		35°07.158' N	112°00.545' W
Fence - Cut/Damaged		Repair Needed	Cut fence along 125 rd at cattleguard	outside private boundary/in permittee horse pasture?	35°03.502' N	112°08.253' W
Fence - Cut/Damaged		Repair Needed	Cut fence along 125 rd at cattleguard		35°01.620' N	112°06.588' W
Hazard Tree		Repair Needed	Please back and remove trees from rock outcrop.	Dozer pushed pines into rock outcrop.	35°02.375' N	112°08.470' W
Helispot	15	No Repair Needed		Approved type 2 and 3	35°03.012' N	112°08.283' W
Helispot	20	No Repair Needed	No disturbance	Approved type 2 and 3	35°04.648' N	112°00.563' W
Helispot	25	Repair Needed	Pull flagging	Approved type 2 and 3. Caution powerlines and fence posts.	35°08.292' N	112°00.382' W
Helispot	60	Unknown		Type 2 or 3.	35°01.973' N	112°04.240' W
Repair Point		Repair Needed	end state - displace to not look like connector trail. pull rocks, duff over intersection and down to edge of rocks approx. 50'		35°08.842' N	112°08.740' W
Repair Point		Repair Needed	Loop and scatter interior	Dozer line plus trail junction	35°07.066' N	112°00.367' W
Repair Point		Repair Needed	Ensure private gate is closed or left as before at entrance to BSC		35°07.960' N	112°08.474' W
Repair Point		Repair Needed	Slash should be scattered, partially cut burn should be filled and topped/scattered		35°07.860' N	112°08.891' W
Repair Point		Repair Needed	Loop and scatter in old log landing		35°09.428' N	112°00.020' W
Repair Point		Repair Needed	Flagging pink w. black polka dots. Sycamore Point trail was obliterated by dozer line here.		35°06.902' N	112°00.407' W
Repair Point		Repair Needed	heavy slash chipping needed from this point to JD dam	Cats drive around	35°08.207' N	112°05.221' W
Repair Point		Repair Needed	remove tree and replace t post	dozer damaged tree outside fence and damaged fence on private boundary. tree overhangs fence spur off dozer line into non MWM road	35°03.425' N	112°03.020' W
Repair Point		Repair Needed	ensure closure to avoid vehicle use towards private parcel		35°02.488' N	112°08.358' W
Repair Point		Repair Needed	Dispose the line running downhill toward the old road. pull rocks across.		35°01.020' N	112°07.233' W
Repair Point		Repair Needed	chip slash along road		35°05.418' N	112°06.941' W
Repair Point		Repair Needed	displace small handline around spot along W side 125 rd		35°01.808' N	112°06.944' W
Repair Point		Repair Needed	chip slash		35°04.648' N	112°00.563' W
Repair Point		Repair Needed	small handline by 125 rd around spot		35°01.792' N	112°06.931' W
Repair Point		Unknown		replace burned over road closure signpost. (BAER?)	35°02.014' N	112°05.775' W

FC Line Type	Label	Repair Status	Repair Comments	Comments	Length Feet
Completed Dozer Line		Repair Needed	Obsolesce, repair fence. Pull berm back.		512
Completed Dozer Line		Repair Needed	Light hand, do not repair improved row trail, handling needs cut pulled back on it, obsolesce beginning and ending. Remove some highest trees.	Rocky on some places, lies into old roads and cow trails.	1756
Completed Dozer Line	DZ-1	Repair Needed	Excavator needed to pull berm		1816
Completed Dozer Line	DZ-1	Repair Needed	Area is extremely rocky. Dozer line has brush cut along side and is only 1 blade wide, repair should be to scatter brush and dig out beginning of dozer line off of the 125 Rd.	Area is extremely rocky. Dozer line has brush cut along side and is only 1 blade wide, repair should be to scatter brush and dig out beginning of dozer line off of the 125 Rd.	3199
Completed Dozer Line	DZ-10	Repair Needed	Pull berm and slash across roads.		6075
Completed Dozer Line	DZ-11	Repair Needed	Likely needs excavator	Not fire's edge	1451
Completed Dozer Line	DZ-12	Repair Needed	LINE MAY BE DUPLICATE - wait for Final Sync from Outa map; Repair first part of dozer that is really rocky to ensure that it does not become an ohr road - 0629 not duplicate as of 12-23	Fire portion is rocky and then it ties into an old logging road cut	4492
Completed Dozer Line	DZ-13	Repair Needed	Pull berm.	fire edge to east	2026
Completed Dozer Line	DZ-14	Repair Needed	Pull berm. Drag slash/wood and dumped to cover as much as possible	outside fire edge. does not abut burnout.	410
Completed Dozer Line	DZ-15	Repair Needed	Pull berm and pull slash over the line		987
Completed Dozer Line	DZ-16	Repair Needed	Repair with hand pull on berm and scatter slash across line	Breakdown line of rocks. End state - doesn't look like trail.	1412
Completed Dozer Line	DZ-17	Repair Needed			5008
Completed Dozer Line	DZ-18	Repair Needed			1043
Completed Dozer Line	DZ-19	Repair Needed		Corner bit dozer push	1313
Completed Dozer Line	DZ-22	Repair Needed			4296
Completed Dozer Line	DZ-3	Repair Needed			1611
Completed Dozer Line	DZ-5	Repair Needed			147
Completed Dozer Line	DZ-6	Repair Needed			1730
Completed Dozer Line	DZ-7	Repair Needed	Pullback berms and dig out	Soft soils, avoids fences	961
Completed Dozer Line	DZ-8	Repair Needed	Excavator needed, or crew	Dozerline around corral and old RV	764
Completed Hand Line		No Repair Needed			2133
Completed Hand Line		No Repair Needed			1611
Completed Hand Line		Repair Needed	Needs to be closed / scraped, brushed, etc from Sycamore Rim Trail to east		350
Completed Hand Line	H-3	Repair Needed	Pull berm back, end state, does not look like trail		377
Completed Hand Line	H-4	Repair Needed			3489
Completed Road as Line		Repair Needed	Non MWM road. No machinery needed. Will allow further rec usage to back of BSC if not closed. 499 road on Arizona Basemap.	Old two track was here prior to fire. Non-MWM road. Will allow further rec usage to back of BSC.	910
Completed Road as Line		Unknown			363
Completed Road as Line		Repair Needed	chip slash on side of rd, heavier near JD dam	12 rd preppe road to bum	20548
Completed Road as Line		Repair Needed	Make sure it is adequately flagged to disperse the road entrance from FS system road		612
Completed Road as Line		Repair Needed	Loop and scatter slash <2'		300
Completed Road as Line		In Use - Fire Management		Appears to be duplicated with another piece of Completed Road as Line	10243
Completed Road as Line		No Repair Needed		Flush cut the branch stubs to the branch collar. Avoid extra scarring on logs. Scatter slash far enough away from trail to not see it.	1612
Repair Line		Repair Needed		Fire edge should align with the 109 road.	5048
Repair Line		Repair Needed		Chip slash	7536

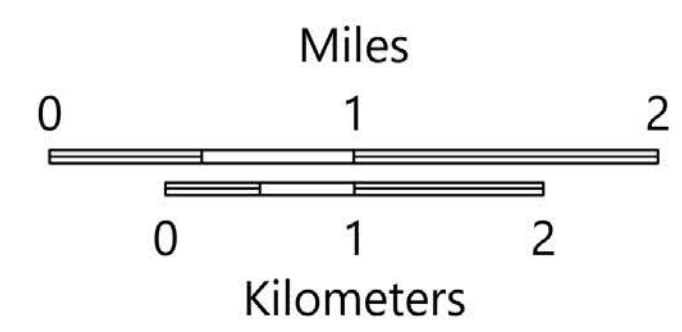
Feature Category (Point Type)	Label	Repair Status	Comments	Latitude WGS84 DDM	Longitude WGS84 DDM	Property Status
Pump		Unknown	At pond scout camp. West side of pond.	35°08.195' N	111°58.493' W	Unknown
Pump		Unknown	Water supply for Manterola residence sprinklers and engine fill	35°08.482' N	111°58.002' W	Unknown
Pump		Unknown		35°08.483' N	111°58.004' W	Unknown
Water Tank		Unknown	Pumpkin 3000 gallons, filling off of Manterola residence well	35°08.484' N	111°58.002' W	Unknown
Water Tank		Unknown	3000 Gallon pumpkin	35°07.653' N	111°55.337' W	Unknown
Water Tank		Unknown	Pumpkin	35°02.341' N	112°05.189' W	Unknown
Water Tank		Unknown	1800 GAL Pumpkin	35°03.239' N	112°03.847' W	Unknown
Water Tank		Unknown	Pumpkin	35°02.377' N	112°07.015' W	Unknown
Water Tank		Unknown	1800 Gal Pumpkin	35°04.119' N	112°01.976' W	Unknown





# SUPPRESSION REPAIR *South*

Rafael  
 AZ-PNF-863  
 6/30/2021  
 78,709 acres  
 at 6/29/21 2115 hrs



- Repair Status Line
  - Completed - Inspected
  - In Use - Fire Management
  - Repair Needed
- Repair Status Point
  - In Use - Fire Management
  - Repair Needed
  - Unknown
  - Hellspot
  - Dip Site
  - Division Break
  - Branch Break
  - Drop Point
- Camp
- Staging Area
- Lookout
- Value at Risk
- Gate
- Repair Point
- Fence - Cut/Damaged
- Hazard
- Completed Dozer Line
- Completed Hand Line
- Completed Road as Line
- Other
- Retardant Drop
- Fire Edge
- Contained Line
- Secondary Highway
- Paved Roads
- Dirt (Not Paved)
- USFS Road
- Trail
- Tunnel; Bridge
- Railroad
- Runway
- Wildfire Daily Fire Perimeter
- Substation
- Transmission Line
- Oil and Natural Gas Well
- Oil and Natural Gas Pipeline
- Fire History
- Ranger District Boundary
- Administrative FS Boundary
- Federal Wilderness Boundary
- County Boundary
- County
- Local or State Parks
- Other Federal
- Private
- State
- US Forest Service

FC Point Type	Label	Repair Status	Repair Comments	Comments	Latitude	Longitude
Drop Point	20	Unknown			34° 53.749' N	112° 12.366' W
Drop Point	30	Unknown			34° 55.563' N	112° 12.375' W
Drop Point	73	Unknown			34° 54.456' N	111° 50.943' W
Drop Point	77	Unknown			34° 55.081' N	111° 54.583' W
Drop Point	80	In Use - Fire Management		JNez for Pat Moore MESA IHC proposed drop point	34° 53.304' N	111° 54.385' W
Fence - Cut/Damaged		Repair Needed		Cut fence for dozer access JNez ARCH	34° 53.717' N	111° 52.950' W
Fence - Cut/Damaged		In Use - Fire Management		needs repair	34° 54.726' N	111° 54.464' W
Fence - Cut/Damaged		In Use - Fire Management		needs repair JNez ARCH	34° 54.647' N	111° 54.249' W
Fence - Cut/Damaged		In Use - Fire Management		dozer rolled over, wooden lathes need to be replaced	34° 54.627' N	111° 54.249' W
Hellspot	10	Unknown		Needs dust abatement. Type 2 and 3	34° 57.156' N	112° 12.879' W
Hellspot	75	Unknown		type 3 only Fay canyon trailhead parking lot. 1/2 acre paved parking lot.	34° 54.120' N	111° 51.450' W
Repair Point		Repair Needed		scatter slash	34° 55.040' N	111° 53.957' W
Repair Point		Repair Needed		Place boulders to prevent OHV	34° 54.744' N	111° 54.636' W

FC Line Type	Label	Repair Status	Repair Comments	Comments	Length Feet
Completed Dozer Line		Completed - Inspected	obliterate berm, pull slash overline, needs ARCH monitor	masked 6/25, repaired on 6/30 per local specs -JNez	2169
Completed Dozer Line	DZ-20	Repair Needed	will need water bars, berms pulled, slash pulled back across line.	multiple drainage crossings, buried telephones JNez	9341
Completed Hand Line		Completed - Inspected	obliterate berm, scatter slash on line	repaired on 6/30 per local specs -JNez	235
Completed Hand Line		Completed - Inspected	needs ARCH	needs arch to repair, repaired 6/28 JNez	104
Completed Hand Line	H-5	Repair Needed			1657
Completed Hand Line	H-6	Repair Needed			315
Completed Hand Line	H-9	Repair Needed			73
Completed Road as Line		In Use - Fire Management	scatter or chip slash		2656
Completed Road as Line		Repair Needed		scatter or chip slash	2831
Other		In Use - Fire Management	None	Trail as line, fuel break	1373