

OPERATIONS

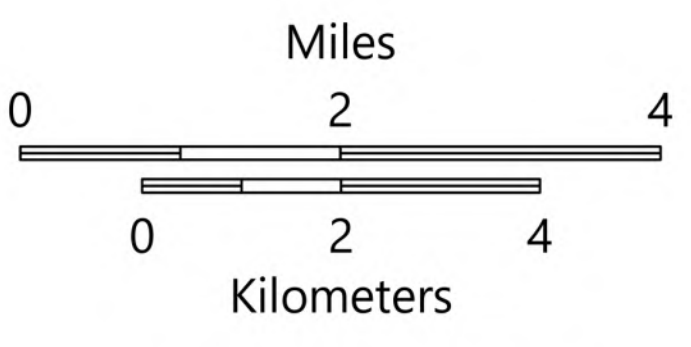
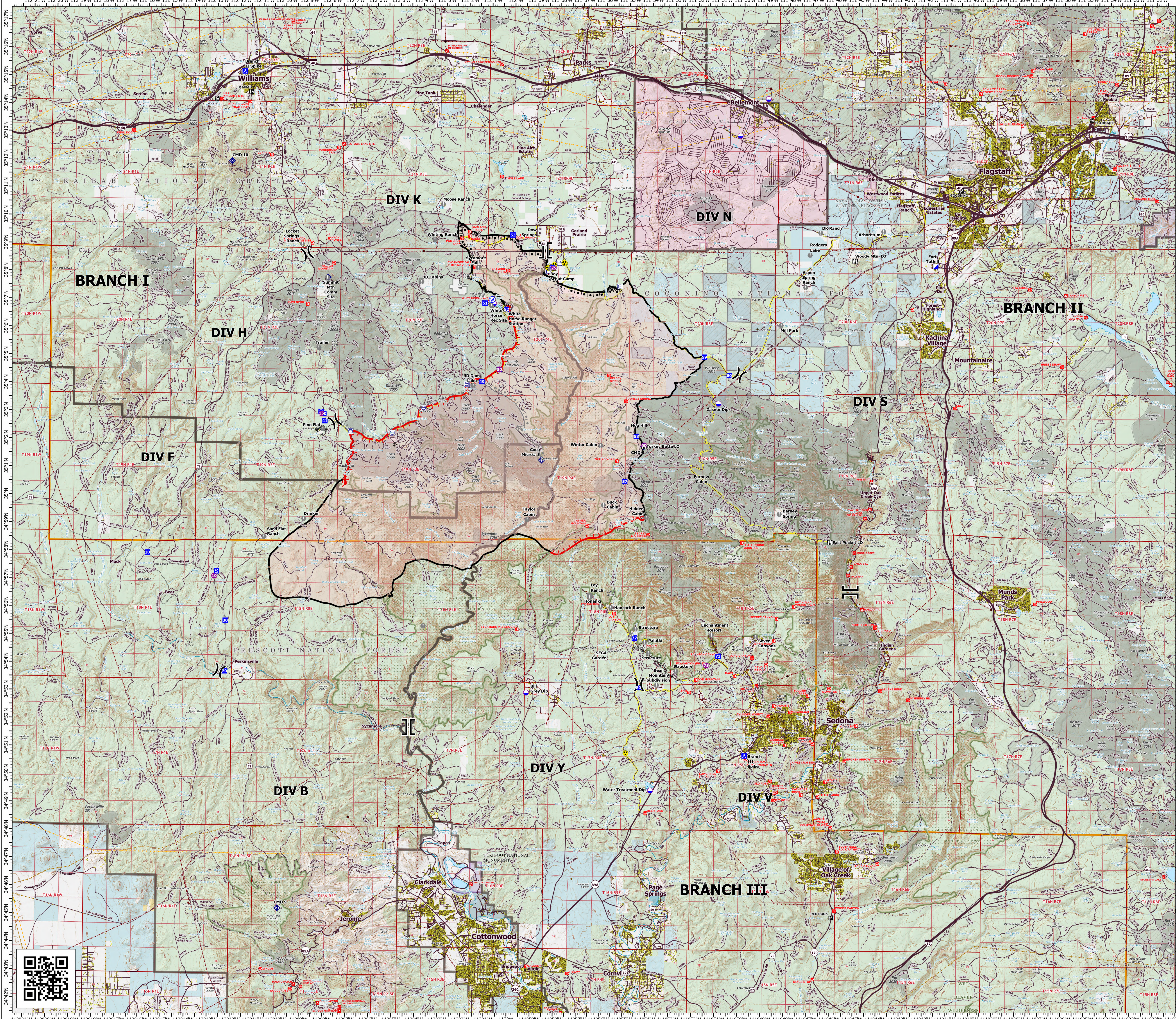


Rafael
AZ-PNF-863
6/30/2021



78,709 acres at 6/28/21 2140 hrs

- Helispot
- Dip Site
- ⌘ Division Break
- ⌘ Branch Break
- ▣ Incident Command Post
- Drop Point
- Camp
- Staging Area
- Lookout
- Value at Risk
- Gate
- ◆ Mobile Weather Unit
- ◆ Repeater
- ▲ Safety Zone
- Hazard
- Water Source
- Pump
- Water Tank
- Structure
- Completed Burnout
- Completed Dozer Line
- Completed Hand Line
- Completed Road as Line
- Planned Burnout
- Planned Road as Line
- Planned Secondary Line
- Other
- Fire Edge
- Contained Line
- Primary Highway
- Secondary Highway
- Paved Roads
- Dirt (Not Paved)
- USFS Road
- Access Road
- Trail
- Tunnel; Bridge
- Railroad
- Runway
- Wildfire Daily Fire Perimeter
- Substation
- Transmission Line
- Natural Gas Liquid Pipeline
- Oil and Natural Gas Well
- Oil and Natural Gas Pipeline
- Fire History
- Fuel Treatment
- Administrative FS Boundary
- Federal Wilderness Boundary
- County Boundary
- Bureau of Land Management
- County
- Indian Lands
- Local or State Parks
- Military
- National Park Service
- Other Federal
- Private
- State
- State Wildlife Area
- US Forest Service



1:76,000 SWAINT2 GIS: 6/29/2021 2018
Aces from GIS (goodies)
North American 1983 Datum, LatLong Grid