

TRANSPORTATION

Rafael
AZ-PNF-863
6/30/2021

78,709 acres at 6/28/21 2140 hrs

Medical Transport Routes

- less than 15 minutes
- more than 15 minutes

30-65minutes

Dip Site

Helispot

Division Break

Branch Break

Incident Command Post

Drop Point

Camp

Staging Area

Lookout

Value at Risk

Gate

Mobile Weather Unit

Repeater

Safety Zone

Hazard

Water Source

Primary Highway

Secondary Highway

Paved Roads

Dirt (Not Paved)

Access Road

Trail

Tunnel; Bridge

Railroad

Completed Burnout

Completed Dozer Line

Completed Hand Line

Completed Road as Line

Planned Burnout

Planned Road as Line

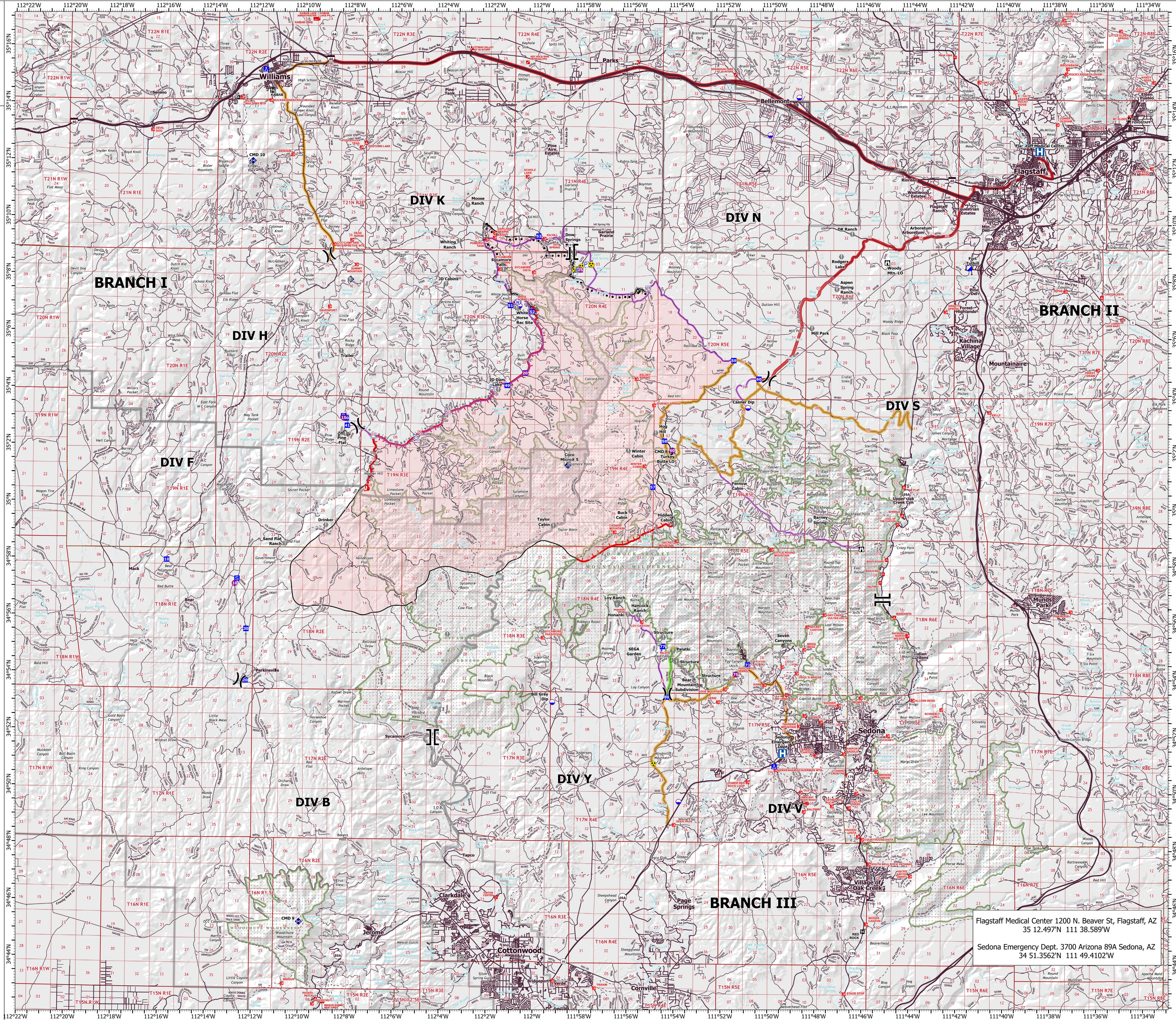
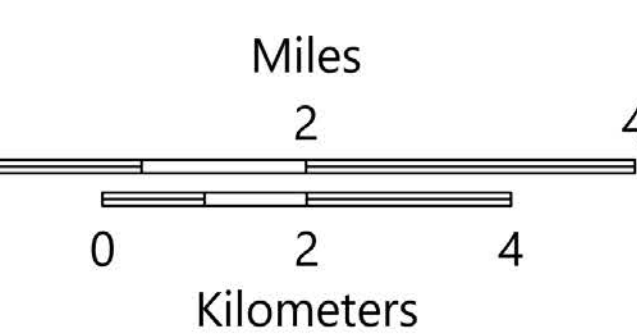
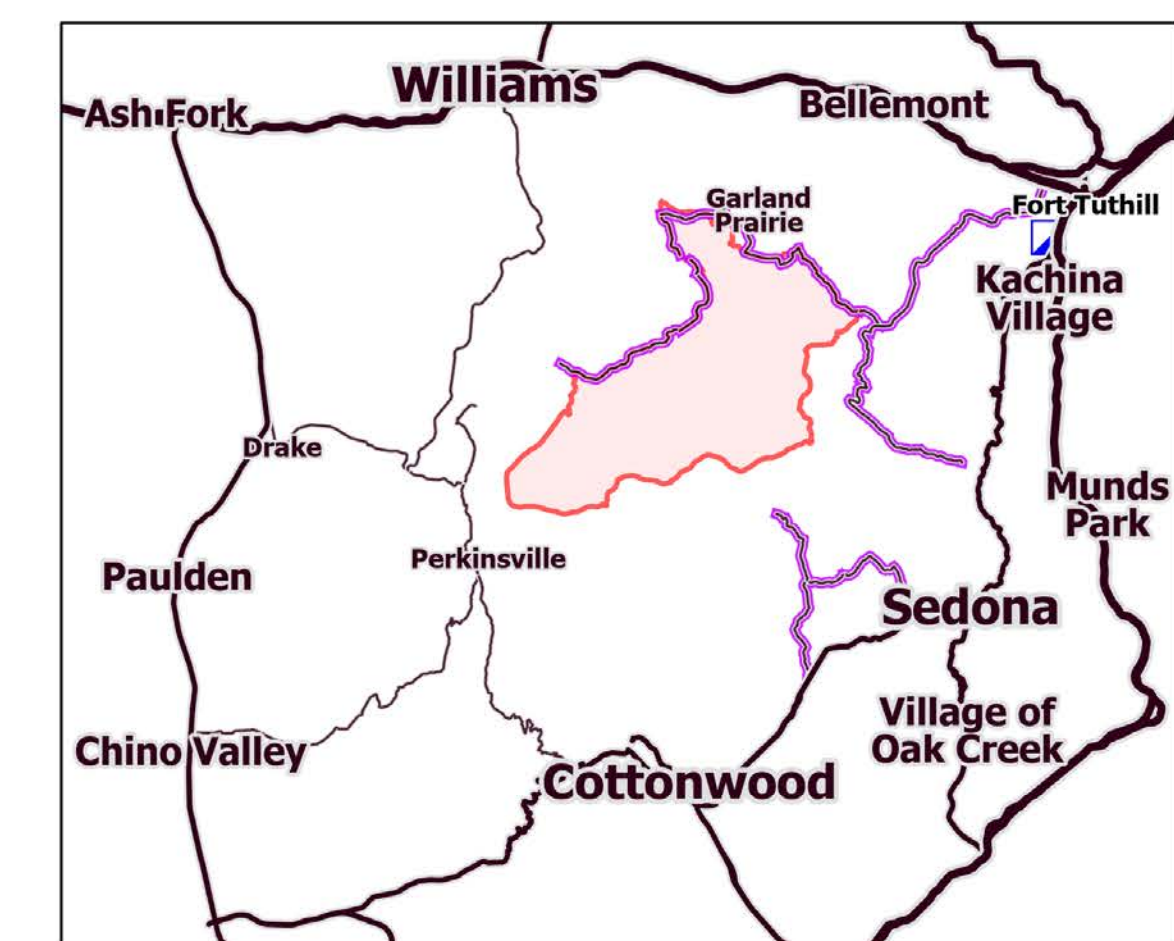
Planned Secondary Line

Other

Fire Edge

Contained Line

Wildfire Daily Fire Perimeter



Flagstaff Medical Center 1200 N. Beaver St, Flagstaff, AZ
35 12.497'N 111 38.589'W
Sedona Emergency Dept. 3700 Arizona 89A Sedona, AZ
34 51.3562'N 111 49.4102'W