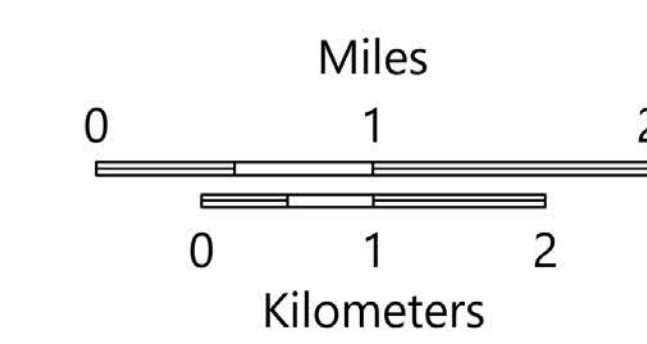


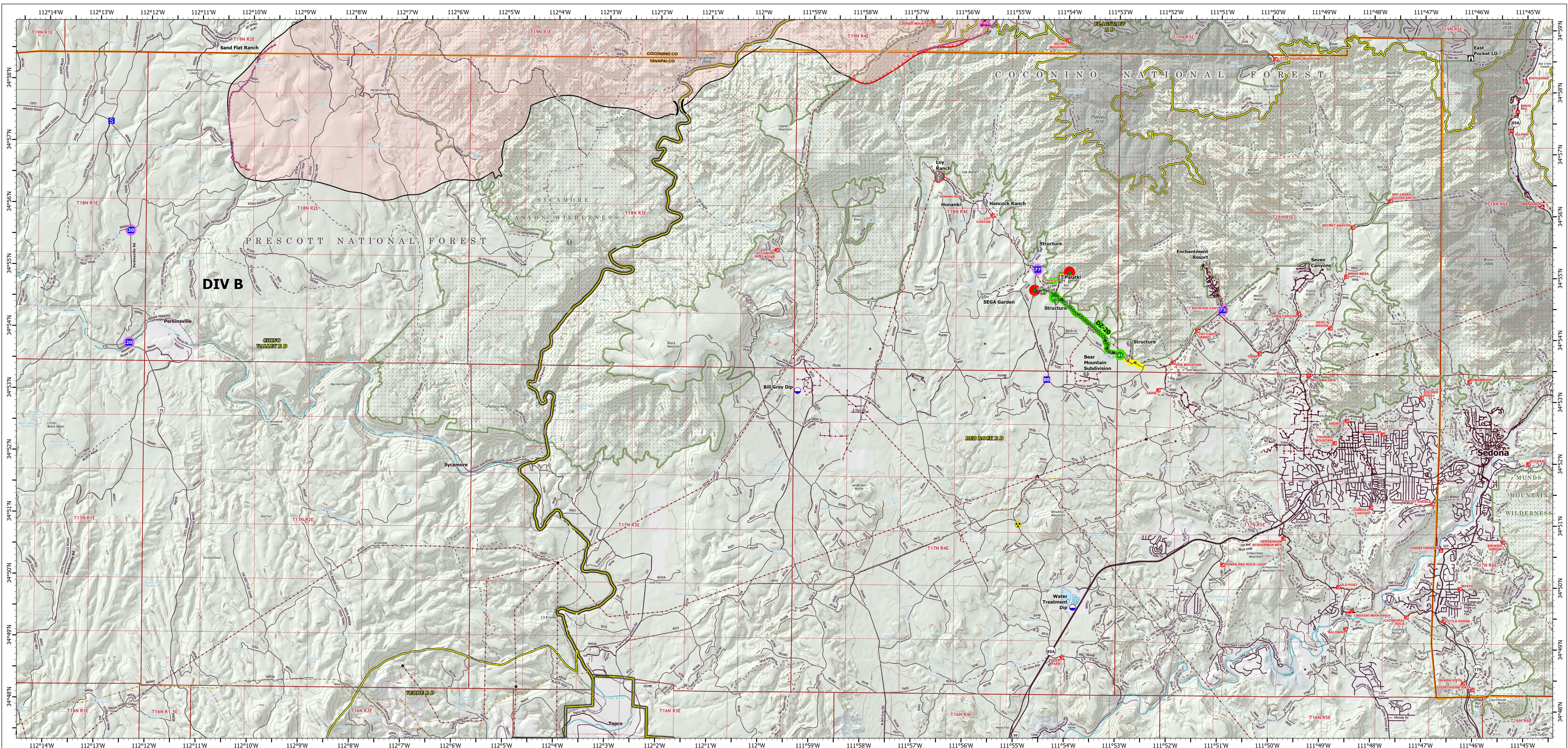
# SUPPRESSION REPAIR North

Rafael  
AZ-PNF-863  
7/1/2021  
78,065 acres  
at 7/1/2021 1200



- |                                                                                                                                                                                                                                                                                                                                                                                                   |                                                                                                                                                                                                                                                                                                                                                   |                                                                                                                                                                                                                                                                                                                                                                                |                                                                                                                                                                                                                                                                                                                                                                                          |
|---------------------------------------------------------------------------------------------------------------------------------------------------------------------------------------------------------------------------------------------------------------------------------------------------------------------------------------------------------------------------------------------------|---------------------------------------------------------------------------------------------------------------------------------------------------------------------------------------------------------------------------------------------------------------------------------------------------------------------------------------------------|--------------------------------------------------------------------------------------------------------------------------------------------------------------------------------------------------------------------------------------------------------------------------------------------------------------------------------------------------------------------------------|------------------------------------------------------------------------------------------------------------------------------------------------------------------------------------------------------------------------------------------------------------------------------------------------------------------------------------------------------------------------------------------|
| <ul style="list-style-type: none"> <li>Repair Status Line</li> <li>Completed - Inspected</li> <li>In Use - Fire Management</li> <li>Completed - Ready for Inspection</li> <li>Repair Needed</li> <li>No Repair Needed</li> <li>Unknown</li> <li>Repair Status Point</li> <li>Completed - Inspected</li> <li>Repair Needed</li> <li>No Repair Needed</li> <li>Unknown</li> <li>Dip Site</li> </ul> | <ul style="list-style-type: none"> <li>Division Break</li> <li>Drop Point</li> <li>Staging Area</li> <li>Lookout</li> <li>Value at Risk</li> <li>No Repair Point</li> <li>Hazard Tree</li> <li>Fence - Cut/Damaged</li> <li>Repeater</li> <li>Safety Zone</li> <li>Hazard</li> <li>USFS Road</li> <li>Trail</li> <li>Completed Burnout</li> </ul> | <ul style="list-style-type: none"> <li>Completed Dozer Line</li> <li>Completed Hand Line</li> <li>Completed Road as Line</li> <li>Repair Line</li> <li>Retardant Drop</li> <li>Fire Edge</li> <li>Contained Line</li> <li>Secondary Highway</li> <li>Paved Roads</li> <li>Dirt (Not Paved)</li> <li>USFS Road</li> <li>Trail</li> <li>Wildfire Daily Fire Perimeter</li> </ul> | <ul style="list-style-type: none"> <li>Substation</li> <li>Transmission Line</li> <li>Oil and Natural Gas Well</li> <li>Fire History</li> <li>Fuel Treatment</li> <li>Ranger District Boundary</li> <li>Administrative FS Boundary</li> <li>Federal Wilderness Boundary</li> <li>County Boundary</li> <li>Military</li> <li>Private</li> <li>State</li> <li>US Forest Service</li> </ul> |
|---------------------------------------------------------------------------------------------------------------------------------------------------------------------------------------------------------------------------------------------------------------------------------------------------------------------------------------------------------------------------------------------------|---------------------------------------------------------------------------------------------------------------------------------------------------------------------------------------------------------------------------------------------------------------------------------------------------------------------------------------------------|--------------------------------------------------------------------------------------------------------------------------------------------------------------------------------------------------------------------------------------------------------------------------------------------------------------------------------------------------------------------------------|------------------------------------------------------------------------------------------------------------------------------------------------------------------------------------------------------------------------------------------------------------------------------------------------------------------------------------------------------------------------------------------|

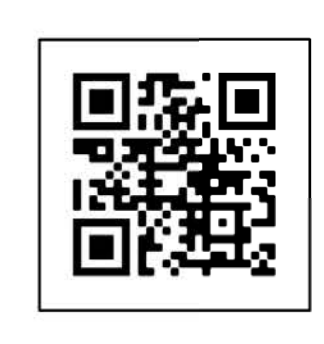
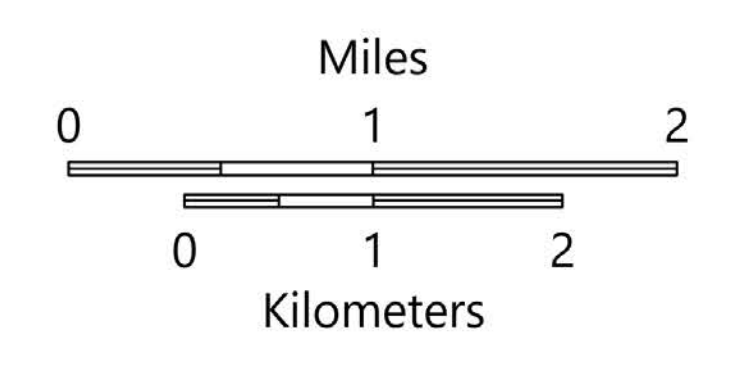
EC Point Type	Label	Repair Status	Repair Comments	Comments	Latitude	Longitude	EC Line Type	Label	Repair Status	Repair Comments	Comments	Length Feet
Drop Point	10	Unknown			34° 57.565' N	112° 15.795' W	Completed Dozer Line	302-1	Completed - Inspected			1539
Drop Point	40	No Repair Needed			35° 03.001' N	112° 08.183' W	Completed Dozer Line	302-1	Completed - Inspected			1539
Drop Point	41	No Repair Needed			35° 02.743' N	112° 08.130' W	Completed Dozer Line	302-1	Completed - Inspected			1539
Drop Point	49	No Repair Needed	No repair		35° 04.258' N	112° 01.320' W	Completed Dozer Line	302-1	Completed - Inspected			8075
Drop Point	50	No Repair Needed		Gravelled pullout along 105 road, for sycamore canyon bike trail.	35° 04.648' N	112° 00.563' W	Completed Dozer Line	302-1	Completed - Inspected			4812
Drop Point	51	No Repair Needed		No disturbance	35° 07.013' N	112° 01.217' W	Completed Dozer Line	302-1	Completed - Inspected			4812
Drop Point	53	No Repair Needed	Minimal slash in this area, no repair needed.		35° 06.599' N	112° 00.282' W	Completed Dozer Line	302-1	Completed - Inspected			4812
Drop Point	53	No Repair Needed		White Horse Rec. Devidences	35° 09.463' N	112° 00.032' W	Completed Dozer Line	302-1	Completed - Inspected			4812
Drop Point	55	Repair Needed	trash and flagging needs to be pulled		35° 08.324' N	111° 58.289' W	Completed Dozer Line	302-1	Completed - Inspected			4812
Drop Point	57	Unknown		Boy Scout Camp	35° 06.079' N	111° 55.067' W	Completed Dozer Line	302-1	Completed - Inspected			4812
Drop Point	58	Unknown			35° 02.178' N	111° 54.576' W	Completed Dozer Line	302-1	Completed - Inspected			4812
Drop Point	59	Unknown			35° 05.153' N	111° 51.644' W	Completed Dozer Line	302-1	Completed - Inspected			4812
Drop Point	60	Unknown			35° 04.505' N	111° 50.554' W	Completed Dozer Line	302-1	Completed - Inspected			4812
Fence - Cut/Damaged		Repair Needed	Burnout operation damaged fence. Needs supplies for repairs.		35° 08.496' N	111° 58.561' W	Completed Dozer Line	302-1	Completed - Inspected			4812
Fence - Cut/Damaged		Repair Needed	Need minimal supplies.		35° 07.159' N	112° 08.545' W	Completed Dozer Line	302-1	Completed - Inspected			4812
Fence - Cut/Damaged		Repair Needed		outside private boundary/in permittee horse pasture?	35° 02.502' N	112° 08.253' W	Completed Dozer Line	302-1	Completed - Inspected			4812
Fence - Cut/Damaged		Completed - Inspected	cut fence along 125 rd at cartquard		35° 01.020' N	112° 08.858' W	Completed Dozer Line	302-1	Completed - Inspected			4812
Hazard Tree		Repair Needed	Please back and remove trees from rock outcrop.		35° 02.178' N	112° 08.476' W	Completed Dozer Line	302-1	Completed - Inspected			4812
Repair Point		Repair Needed	end state: disguise to not look like connector trail; pull rocks, duff over intersection and down to edge of rocks approx. 50'		35° 08.842' N	111° 58.746' W	Completed Dozer Line	302-1	Completed - Inspected			4812
Repair Point		Repair Needed	Log and scatter interior		35° 09.460' N	112° 00.891' W	Completed Dozer Line	302-1	Completed - Inspected			4812
Repair Point		Repair Needed	Flagged pink w. black outline dots. Disguise dozer line from designated trail.		35° 07.066' N	112° 08.267' W	Completed Dozer Line	302-1	Completed - Inspected			4812
Repair Point		Repair Needed	Ensure private gate is closed or left as before at entrance to BSC		35° 07.997' N	111° 58.494' W	Completed Dozer Line	302-1	Completed - Inspected			4812
Repair Point		Repair Needed	Slash should be scattered, partially cut. Jumi should be felled and kipped/scattered		35° 07.947' N	111° 58.471' W	Completed Dozer Line	302-1	Completed - Inspected			4812
Repair Point		Repair Needed	Log and scatter in old log landing		35° 09.428' N	112° 00.629' W	Completed Dozer Line	302-1	Completed - Inspected			4812
Repair Point		Repair Needed	Flagged pink w. black outline dots. Sycamore Point trail was obliterated by dozer line here.		35° 02.178' N	112° 08.476' W	Completed Dozer Line	302-1	Completed - Inspected			4812
Repair Point		Repair Needed		Gable drive around	35° 08.820' N	111° 57.821' W	Completed Dozer Line	302-1	Completed - Inspected			4812
Repair Point		Repair Needed	heavy slash chipping needed from this point to JD dam		35° 03.455' N	112° 03.026' W	Completed Dozer Line	302-1	Completed - Inspected			4812
Repair Point		Repair Needed	remove tree and replace if post		35° 02.468' N	112° 08.258' W	Completed Dozer Line	302-1	Completed - Inspected			4812
Repair Point		Repair Needed	ensure closure to avoid vehicle use towards private parcel		35° 02.408' N	112° 08.079' W	Completed Dozer Line	302-1	Completed - Inspected			4812
Repair Point		Completed - Inspected	Disguise the line running downhill toward the old road, pull rocks across.		35° 01.020' N	112° 07.233' W	Completed Dozer Line	302-1	Completed - Inspected			4812
Repair Point		Repair Needed	chip slash along road		35° 05.418' N	111° 59.941' W	Completed Dozer Line	302-1	Completed - Inspected			4812
Repair Point		Completed - Inspected	disguise small handline around spot along W side 125 rd		35° 01.808' N	112° 06.946' W	Completed Dozer Line	302-1	Completed - Inspected			4812
Repair Point		Repair Needed	chip slash		35° 04.474' N	112° 00.852' W	Completed Dozer Line	302-1	Completed - Inspected			4812
Repair Point		Completed - Inspected	small handline by 125 m around spot		35° 01.792' N	112° 06.931' W	Completed Dozer Line	302-1	Completed - Inspected			4812
Repair Point		Unknown		replace burned over road closure signpost. (BAER?)	35° 02.014' N	112° 05.775' W	Completed Dozer Line	302-1	Completed - Inspected			4812



IC Point Type	Label	Repair Status	Repair Comments	Comments	Latitude	Longitude	IC Line Type	Label	Repair Status	Repair Comments	Comments	Length Feet
Drop Point	20	Unknown			34° 53.749' N	112° 12.386' W	Completed Dozer Line	D2-20	Completed - Inspected	will need water bars, berms pulled, slash pulled back across line, repaired per local specs, all slash, road drivable. JNez. All repair work done. No pumps or hose. Inspected and completed.	multiple drainage crossings, banded telephones JNez	9241
Drop Point	30	Unknown			34° 55.563' N	112° 12.375' W						
Drop Point	73	Unknown			34° 54.456' N	111° 50.943' W						
Drop Point	77	Unknown			34° 55.081' N	111° 54.583' W						
Drop Point	80	In Use - Fire Management		JNez for Pat Moore MESA JNez proposed drop point.	34° 53.304' N	111° 54.385' W						
Fence - Cut/Damaged	Completed - Inspected		fence repaired, mounded and boulders placed, trail gate not damaged, great work	Cut fence for dozer access JNez ARCH, repaired 6/29	34° 53.717' N	111° 52.950' W	Completed Dozer Line	D2-21	Completed - Inspected	obliterate berm, pull slash overline, needs ARCH monitor	maasticated 6/25, repaired on 6/30 per local specs - JNez	2165
Fence - Cut/Damaged	Completed - Inspected			needs repair	34° 54.726' N	111° 54.464' W	Completed Hand Line	H-10	Completed - Inspected	obliterate berm, scatter slash on line	repaired on 6/30 per local specs - JNez	235
Fence - Cut/Damaged	Completed - Inspected			needs repair JNez ARCH, repaired 6/30	34° 54.647' N	111° 54.249' W	Completed Hand Line	H-11	Completed - Inspected	needs ARCH	needs arch to repair, repaired 6/28 JNez	104
Fence - Cut/Damaged	Completed - Inspected			dozer rolled over, wooden lathes need to be replaced, repaired 6/29 was already in bad shape JNez	34° 54.627' N	111° 54.249' W	Completed Hand Line	H-14	Unknown		Cold trail	971
Repair Point	Repair Needed		Scatter over wider area or remove	scatter slash	34° 55.040' N	111° 53.957' W	Completed Hand Line	H-15	Unknown		Cold trail	1
Repair Point	Repair Needed			Place boulders to prevent OHV	34° 54.744' N	111° 54.636' W	Completed Hand Line	H-16	Unknown		Cold trail	9
							Completed Hand Line	H-17	Unknown		Cold trail	708
							Completed Hand Line	H-18	Unknown		Cold trail	821
							Completed Hand Line	H-5	Repair Needed			1657
							Completed Hand Line	H-6	Repair Needed			315
							Completed Hand Line	H-9	Completed - Inspected		no sediment to cover line, repaired 6/30 JNez	73
							Completed Road as Line		In Use - Fire Management	scatter or chip slash		2656
							Completed Road as Line		In Progress		scatter or chip slash	2831
							Other	Completed - Inspected	None		Trail as line, fuel break, repaired and scattered, some slash piled because of veg density - barely noticeable - JNez	1373

# SUPPRESSION REPAIR South

Rafael  
AZ-PNF-863  
7/1/2021  
78,065 acres  
at 7/1/2021 1200



- Repair Status Line
  - Completed - Inspected
  - In Use - Fire Management
  - In Progress
  - Repair Needed
  - Unknown
- Repair Status Point
  - Completed - Inspected
  - In Use - Fire Management
  - Repair Needed
  - Unknown
  - Dip Site
  - Division Break
- Drop Point
- Staging Area
- Lookout
- Value at Risk
- Gate
- Repair Point
- Fence - Cut/Damaged
- Hazard
- Completed Dozer Line
- H - H Completed Hand Line
- R - R Completed Road as Line
- Other
- Retardant Drop
- Fire Edge
- Contained Line
- Secondary Highway
- Paved Roads
- Dirt (Not Paved)
- USFS Road
- Trail
- Tunnel; Bridge
- Railroad
- Runway
- Wildfire Daily Fire Perimeter
- Substation
- Transmission Line
- Oil and Natural Gas Well
- Oil and Natural Gas Pipeline
- Fire History
- Ranger District Boundary
- Administrative FS Boundary
- Federal Wilderness Boundary
- County Boundary
- County
- Local or State Parks
- Other Federal
- Private
- State
- US Forest Service