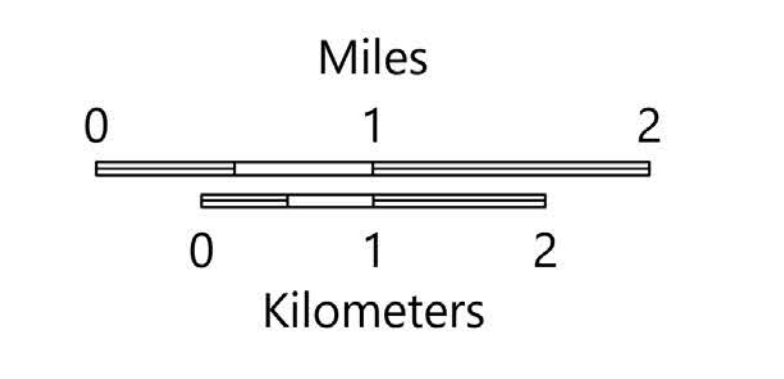


# SUPPRESSION REPAIR North

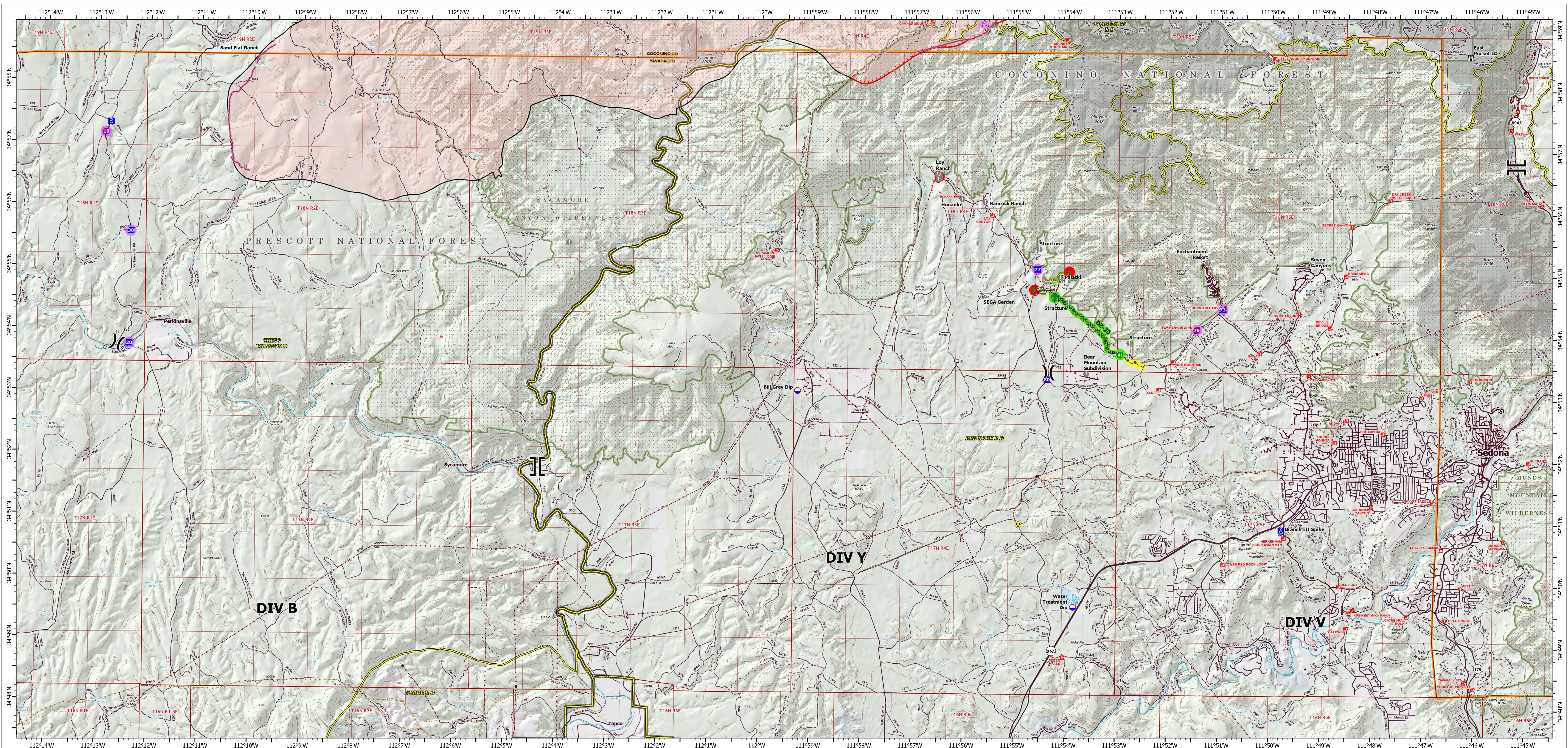
Rafael  
AZ-PNF-863  
7/1/2021  
78,750 acres  
at 6/30/21 2050 hrs



- Repair Status Line
  - Completed - Inspected
  - In Use - Fire Management
  - Completed - Ready for Inspection
  - Repair Needed
  - Unknown
  - Repair Status Point
    - Completed - Inspected
    - Repair Needed
    - Unknown
- Division Break
- Branch Break
- Drop Point
- Staging Area
- Lookout
- Value at Risk
- Unknown
- Repair Point
- Hazard Tree
- Completed Hand Line
- Completed Road as Line
- Repair Line
- Retardant Drop
- Fire Edge
- Contained Line
- Secondary Highway
- Paved Roads
- Dirt (Not Paved)
- USFS Road
- Trail
- Wildfire Daily Fire Perimeter
- Water Tank
- Completed Burnout
- Completed Dozer Line
- Completed Hand Line
- Completed Road as Line
- Repair Line
- Retardant Drop
- Fire Edge
- Contained Line
- Secondary Highway
- Paved Roads
- Dirt (Not Paved)
- USFS Road
- Trail
- Wildfire Daily Fire Perimeter
- Substation
- Transmission Line
- Oil and Natural Gas Well
- Fire History
- Fuel Treatment
- Ranger District Boundary
- Administrative FS Boundary
- Federal Wilderness Boundary
- County Boundary
- City
- Private
- State
- US Forest Service

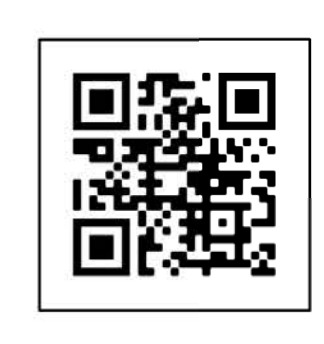
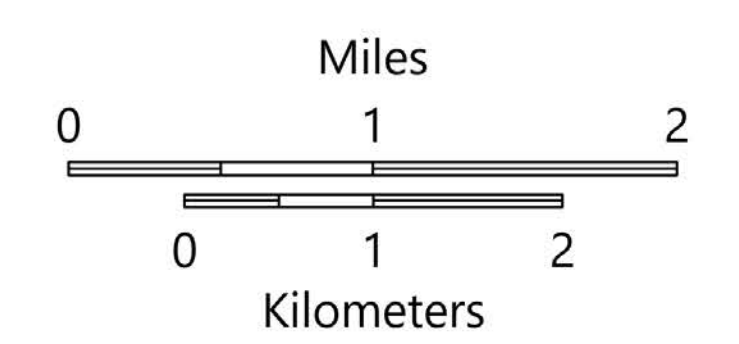
EC Point Type	Label	Dropair Status	Repair Comments	Comments	Latitude	Longitude	EC Item Type	Label	Dropair Status	Dropair Comments	Dropair Comments	Length (ft)
Drop Point	10	Unknown			34° 57' 56.5" N	112° 15' 29.5" W	Completed Dozer Line	02-1	Completed - Inspected	Area is extremely rocky. Dozer has been used to clear area and create a bank and digger logging of dozer line off of the drop point.	Area is extremely rocky. Dozer has been used to clear area and create a bank and digger logging of dozer line off of the drop point.	100
Drop Point	40	No Repair Needed			35° 03' 00.1" N	112° 08' 18.3" W	Completed Dozer Line	02-18	Dropair Needed	Drop air needed.		100
Drop Point	41	No Repair Needed		Gravelled pullout along 105 road, for sycamore canyon bike trail.	35° 02' 26.2" N	112° 08' 18.3" W	Completed Dozer Line	02-19	Dropair Needed	Drop air needed.		100
Drop Point	49	No Repair Needed	No repair		35° 04' 26.2" N	112° 01' 32.2" W	Completed Dozer Line	02-21	Dropair Needed	Drop air needed.		100
Drop Point	50	No Repair Needed			35° 04' 64.8" N	112° 05' 56.3" W	Completed Dozer Line	02-22	Dropair Needed	Drop air needed.		100
Drop Point	51	No Repair Needed			35° 07' 01.3" N	112° 01' 21.7" W	Completed Dozer Line	02-23	Dropair Needed	Drop air needed.		100
Drop Point	52	No Repair Needed	Minimal slash in this area, no repair needed.		35° 02' 26.2" N	112° 01' 32.2" W	Completed Dozer Line	02-24	Dropair Needed	Drop air needed.		100
Drop Point	53	No Repair Needed			35° 06' 46.3" N	112° 00' 03.2" W	Completed Dozer Line	02-25	Dropair Needed	Drop air needed.		100
Drop Point	55	Repair Needed	trash and flagging needs to be pulled		35° 08' 32.4" N	112° 08' 28.8" W	Completed Dozer Line	02-26	Dropair Needed	Drop air needed.		100
Drop Point	57	Unknown			35° 05' 57.1" N	112° 05' 04.2" W	Completed Dozer Line	02-27	Dropair Needed	Drop air needed.		100
Drop Point	58	Unknown			35° 02' 25.5" N	112° 04' 57.6" W	Completed Dozer Line	02-28	Dropair Needed	Drop air needed.		100
Drop Point	59	Unknown			35° 05' 15.3" N	112° 01' 51.644" W	Completed Dozer Line	02-29	Dropair Needed	Drop air needed.		100
Drop Point	60	Unknown			35° 04' 50.5" N	112° 05' 56.4" W	Completed Dozer Line	02-30	Dropair Needed	Drop air needed.		100
Fence - Cut/Damaged		Repair Needed	Burnout operation damaged fence. Needs supplies for repairs.		35° 06' 46.3" N	112° 05' 56.4" W	Completed Dozer Line	02-31	Dropair Needed	Drop air needed.		100
Fence - Cut/Damaged		Repair Needed	Need minimal supplies		35° 07' 15.9" N	112° 05' 54.5" W	Completed Dozer Line	02-32	Dropair Needed	Drop air needed.		100
Fence - Cut/Damaged		Completed - Inspected	outside private boundary/in permit horse pasture?		35° 01' 50.2" N	112° 08' 25.3" W	Completed Dozer Line	02-33	Dropair Needed	Drop air needed.		100
Hazard Tree		Repair Needed	heavy slash and remove trees from rock outcrop.		35° 01' 50.2" N	112° 08' 25.3" W	Completed Dozer Line	02-34	Dropair Needed	Drop air needed.		100
Helispot	15	No Repair Needed	Approved type 2 and 3		35° 03' 01.2" N	112° 08' 28.3" W	Completed Dozer Line	02-35	Dropair Needed	Drop air needed.		100
Helispot	28	No Repair Needed	No disturbance		35° 04' 56.8" N	112° 05' 56.3" W	Completed Dozer Line	02-36	Dropair Needed	Drop air needed.		100
Helispot	35	Repair Needed	Approved type 2 and 3. Caution powerlines and fence posts.		35° 08' 28.2" N	112° 08' 24.4" W	Completed Dozer Line	02-37	Dropair Needed	Drop air needed.		100
Helispot	60	Unknown	Type 2 or 3.		35° 01' 50.2" N	112° 08' 25.3" W	Completed Dozer Line	02-38	Dropair Needed	Drop air needed.		100
Repair Point		Repair Needed	Ensure private gate is closed or left as before at entrance to BSC		35° 07' 06.9" N	112° 05' 56.4" W	Completed Dozer Line	02-39	Dropair Needed	Drop air needed.		100
Repair Point		Repair Needed	Slash should be scattered, partially cut (cut should be filled and topped/scattered)		35° 07' 06.9" N	112° 05' 56.4" W	Completed Dozer Line	02-40	Dropair Needed	Drop air needed.		100
Repair Point		Repair Needed	end slate - dispose to avoid rock line connector trail, pull rocks, duff over intersection and down to edge of rocks approx. 50'		35° 08' 84.2" N	112° 05' 56.4" W	Completed Dozer Line	02-41	Dropair Needed	Drop air needed.		100
Repair Point		Repair Needed	Log and scatter interior		35° 05' 42.8" N	112° 05' 02.9" W	Completed Dozer Line	02-42	Dropair Needed	Drop air needed.		100
Repair Point		Repair Needed	Flagged pink w. black polka dots. Disguise dozer line from designated trail.		35° 07' 00.0" N	112° 03' 36.7" W	Completed Dozer Line	02-43	Dropair Needed	Drop air needed.		100
Repair Point		Repair Needed	Flagged pink w. black polka dots. Disguise dozer line from designated trail.		35° 06' 09.2" N	112° 05' 40.7" W	Completed Dozer Line	02-44	Dropair Needed	Drop air needed.		100
Repair Point		Repair Needed	Gate drive around		35° 05' 41.8" N	112° 05' 56.4" W	Completed Dozer Line	02-45	Dropair Needed	Drop air needed.		100
Repair Point		Completed - Inspected	Disguise the line running downhill toward the old road, pull rocks across.		35° 01' 02.0" N	112° 07' 23.3" W	Completed Dozer Line	02-46	Dropair Needed	Drop air needed.		100
Repair Point		Repair Needed	chip slash along road		35° 05' 41.8" N	112° 05' 56.4" W	Completed Dozer Line	02-47	Dropair Needed	Drop air needed.		100
Repair Point		Repair Needed	chip slash		35° 04' 47.4" N	112° 06' 25.2" W	Completed Dozer Line	02-48	Dropair Needed	Drop air needed.		100
Repair Point		Repair Needed	heavy slash chipping needed from this point to JD dam		35° 01' 45.5" N	112° 03' 02.0" W	Completed Dozer Line	02-49	Dropair Needed	Drop air needed.		100
Repair Point		Repair Needed	remove tree and replace 1 post		35° 02' 46.8" N	112° 08' 35.8" W	Completed Dozer Line	02-50	Dropair Needed	Drop air needed.		100
Repair Point		Repair Needed	ensure closure to avoid vehicle use towards private parcel		35° 02' 42.8" N	112° 08' 07.9" W	Completed Dozer Line	02-51	Dropair Needed	Drop air needed.		100
Repair Point		Completed - Inspected	disguise small handline around spot along W side 125 rd	spur off dozer line into non MVM road	35° 01' 50.2" N	112° 08' 25.3" W	Completed Dozer Line	02-52	Dropair Needed	Drop air needed.		100
Repair Point		Completed - Inspected	small handline by 125 rd around spot		35° 01' 29.2" N	112° 06' 53.1" W	Completed Dozer Line	02-53	Dropair Needed	Drop air needed.		100
Repair Point		Unknown		replace burned over road closure signpost. (BAER?)	35° 02' 01.4" N	112° 05' 27.5" W	Completed Dozer Line	02-54	Dropair Needed	Drop air needed.		100





# SUPPRESSION REPAIR *South*

Rafael  
 AZ-PNF-863  
 7/1/2021  
 78,750 acres  
 at 6/30/21 2050 hrs



- Repair Status Line
  - Completed - Inspected
  - In Use - Fire Management
  - In Progress
  - Repair Needed
  - Unknown
- Repair Status Point
  - Completed - Inspected
  - In Use - Fire Management
  - Repair Needed
  - Unknown
  - Helispot
  - Dip Site
  - Division Break
- Branch Break
- Drop Point
- Camp
- Staging Area
- Lookout
- Value at Risk
- Gate
- Repair Point
- Fence - Cut/Damaged
- Hazard
- Completed Dozer Line
- Completed Hand Line
- Completed Road as Line
- Other
- Repair Line
- Retardant Drop
- Fire Edge
- Contained Line
- Secondary Highway
- Paved Roads
- Dirt (Not Paved)
- USFS Road
- Trail
- Tunnel; Bridge
- Railroad
- Runway
- Wildfire Daily Fire Perimeter
- Substation
- Transmission Line
- Oil and Natural Gas Well
- Oil and Natural Gas Pipeline
- Fire History
- Ranger District Boundary
- Administrative FS Boundary
- Federal Wilderness Boundary
- County Boundary
- County
- Local or State Parks
- Other Federal
- Private
- State
- US Forest Service

FC Point Type	Label	Repair Status	Repair Comments	Comments	Latitude	Longitude	FC Line Type	Label	Repair Status	Repair Comments	Comments	Length Feet
Drop Point	20	Unknown			34° 53.749' N	112° 12.386' W	Completed Dozer Line	D2-20	Completed - Inspected	will need water bars, berms pulled, slash pulled back across line, repaired per local specs, still slash, road drivable. JNez	multiple drainage crossings, buried telephones JNez	9241
Drop Point	30	Unknown			34° 55.563' N	112° 12.375' W						
Drop Point	73	Unknown			34° 54.456' N	111° 50.943' W						
Drop Point	77	Unknown			34° 55.081' N	111° 54.583' W	Completed Dozer Line	D2-21	Completed - Inspected	obliterate berm, pull slash overline, needs ARCH monitor	maaticated 6/25, repaired on 6/30 per local specs - JNez	2165
Drop Point	80	In Use - Fire Management		JNez for Pat Moore MESA JNez proposed drop point.	34° 53.304' N	111° 54.385' W	Completed Hand Line	H-10	Completed - Inspected	obliterate berm, scatter slash on line	repaired on 6/30 per local specs - JNez	235
Fence - Cut/Damaged		Completed - Inspected	fence repaired, mounded and boulders placed, trail gate not damaged, great work	Cut fence for dozer access JNez ARCH, repaired 6/29	34° 53.717' N	111° 52.950' W	Completed Hand Line	H-11	Completed - Inspected	obliterate berm, scatter slash on line	needs arch to repair, repaired 6/28 JNez	104
Fence - Cut/Damaged		Completed - Inspected		needs repair JNez ARCH, repaired/30	34° 54.647' N	111° 54.249' W	Completed Hand Line	H-14	Unknown			971
Fence - Cut/Damaged		Completed - Inspected		dozer rolled over, wooden lathes need to be replaced, repaired 6/29 was already in bad shape JNez	34° 54.627' N	111° 54.249' W	Completed Hand Line	H-15	Unknown			1
Helispot	10	Unknown		Needs dust abatement. Type 2 and 3	34° 57.156' N	112° 12.679' W	Completed Hand Line	H-16	Unknown			9
Helispot	75	Unknown		Type 3 only Flay canyon trailhead parking lot. 1/2 acre paved parking lot.	34° 54.120' N	111° 51.450' W	Completed Hand Line	H-17	Unknown			708
Repair Point		Repair Needed	Scatter over wider area or remove		34° 55.040' N	111° 53.957' W	Completed Hand Line	H-18	Unknown			821
Repair Point		Repair Needed		Place boulders to prevent OHV	34° 54.744' N	111° 54.636' W	Completed Hand Line	H-5	Repair Needed			1657
							Completed Hand Line	H-6	Repair Needed			315
							Completed Hand Line	H-9	Completed - Inspected	no sediment to cover line, repaired 6/30 JNez		73
							Completed Road as Line		In Use - Fire Management	scatter or chip slash		2656
							Completed Road as Line		In Progress	scatter or chip slash		2831
							Other	Completed - Inspected	None	scatter as line, fuel break, repaired and scattered, some slash piled because of veg density, barely noticeable - JNez		1373