

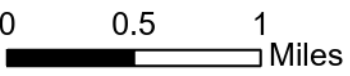
# Pilot

## Rincon

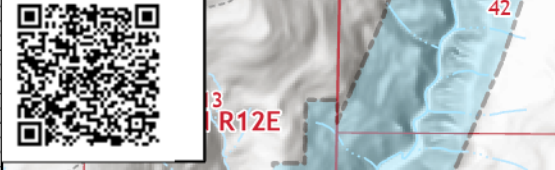
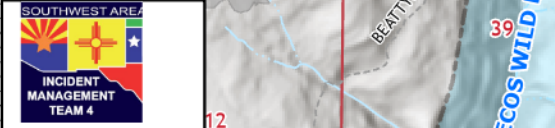
### NMSNF-000190

#### 6/17/2021 Day Shift

531 acres at 06/15/2021

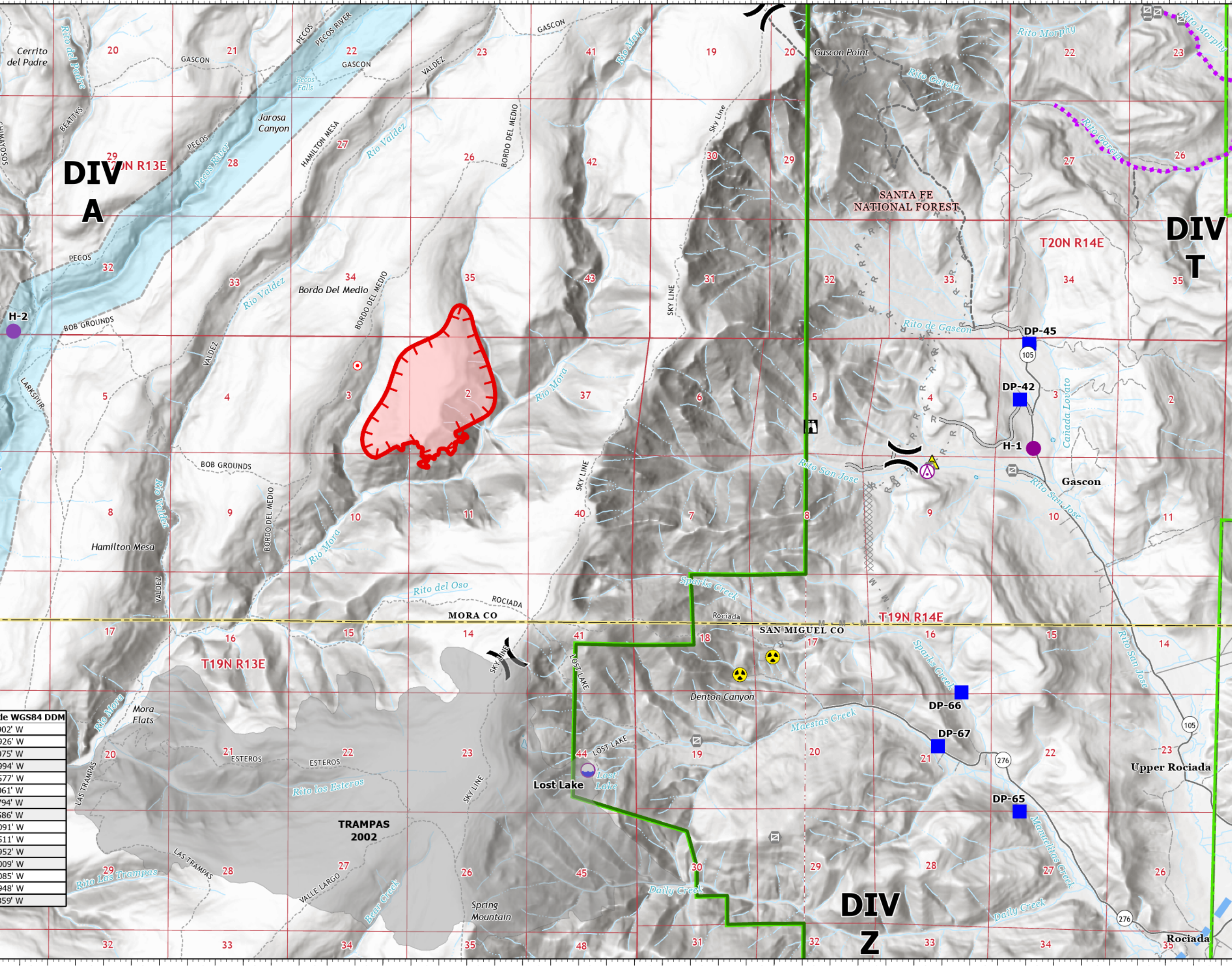


- Aerial Hazard
- Dip Site
- Helispot
- Division Break
- Drop Point
- Lookout
- Hot Spot - Spot Fire
- Gate
- Internet Access
- Safety Zone
- Hazard
- Planned Dozer Line
- Planned Mixed Construction Line
- Planned Road as Line
- Access or Improved Road
- Fence
- Other
- Route
- Temporary Flight Restriction
- Fire Edge
- Wildfire Daily Fire Perimeter
- Wilderness
- Wild and Scenic River
- Fire History
- Recreation Site Point



FC Point Type	Label	Latitude WGS84 DDM	Longitude WGS84 DDM
Aerial Hazard		35° 53.354' N	105° 27.902' W
Dip Site	Lost Lake	35° 51.165' N	105° 30.926' W
Drop Point	DP-42	35° 53.883' N	105° 27.075' W
Drop Point	DP-45	35° 54.289' N	105° 26.994' W
Drop Point	DP-62	35° 50.475' N	105° 24.577' W
Drop Point	DP-65	35° 50.880' N	105° 27.061' W
Drop Point	DP-67	35° 51.353' N	105° 27.794' W
Drop Point	DP-66	35° 51.746' N	105° 27.586' W
Helispot	H-2	35° 54.340' N	105° 36.091' W
Helispot	H-3	35° 57.550' N	105° 30.511' W
Helispot	H-1	35° 53.526' N	105° 26.952' W
Hot Spot - Spot Fire		35° 54.104' N	105° 33.009' W
Incident Command Post		35° 58.231' N	105° 20.085' W
Lookout		35° 53.677' N	105° 28.948' W
Safety Zone		35° 53.424' N	105° 27.859' W

6/16/2021 2052  
 Pecos Wild and Scenic River  
 North American 1983 Datum  
 Lat, Long Grid UTM 13N



**DIV A**

**DIV T**

**DIV Z**

105°38.5'W 105°38'W 105°37.5'W 105°37'W 105°36.5'W 105°36'W 105°35.5'W 105°35'W 105°34.5'W 105°34'W 105°33.5'W 105°33'W 105°32.5'W 105°32'W 105°31.5'W 105°31'W 105°30.5'W 105°30'W 105°29.5'W 105°29'W 105°28.5'W 105°28'W 105°27.5'W 105°27'W 105°26.5'W 105°26'W 105°25.5'W