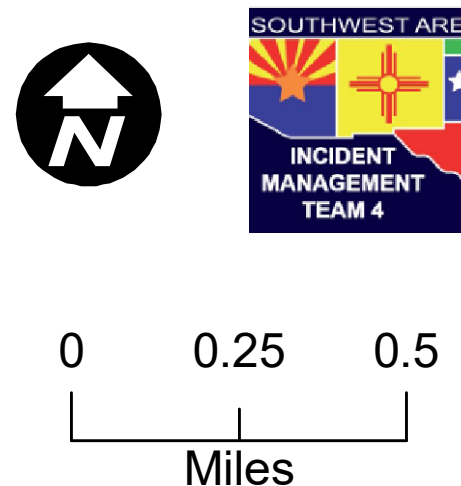


**FS Pro 7 Day**  
**Rincon**  
 NM-SNF-000190  
 6/21/2021 Day Shift  
 Appx 532 acres on  
 6/16/2021



**Legend**

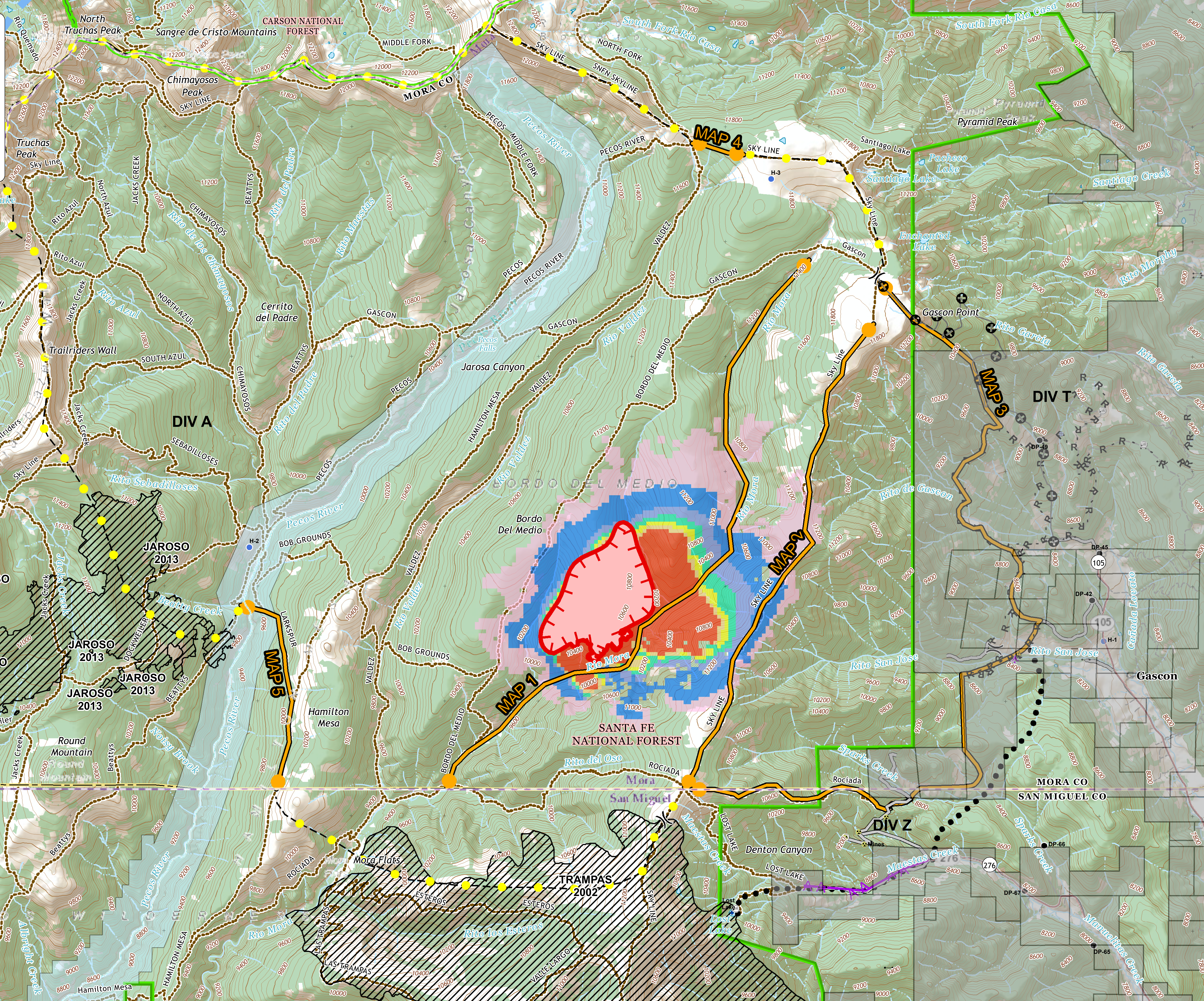
- Surface Ownership
- Label Point
- Aerial Hazard
- Dip Site
- Drop Point
- Gate
- Hazard
- Helipad
- Internet Access
- Lookout
- Safety Zone
- Water Development or Draft Site
- Value at Risk
- Other
- Division Break
- Uncontrolled Fire Edge: Fire Edge
- Highlighted Feature
- R - R Road as Completed Line; Planned Road as Line
- Access or Improved Road
- Planned Secondary Line
- Aerial Hazard
- Temporary Flight Restriction
- Fence
- Management Action Point
- Other
- Wildfire Daily Fire Perimeter

**Rincon\_FSPro\_7day\_0619\_1500**

**VALUE**

- 0
- < 0.2%
- 0.2 - 4.9%
- 5 - 19%
- 20 - 39%
- 40 - 59%
- 60 - 79%
- 80 - 100%
- Fire History
- Wilderness
- Wild Scenic River

As of 6/21/2021  
 Date: 6/20/2021  
 Acres from IR and field reports  
 WGS84 Lat/Long Grid UTM 13N



**DIV T**

**DIV Z**

**DIV A**

**SANTA FE NATIONAL FOREST**

**CARSON NATIONAL FOREST**

**JAR 20**

**JAROSO 2013**

**JAROSO 2013**

**JAROSO 2013**

**JAROSO 2013**

**TRAMPAS 2002**

**MORA CO**

**SAN MIGUEL CO**

As of 6/21/2021  
 Date: 6/20/2021  
 Acres from IR and field reports  
 WGS84 Lat/Long Grid UTM 13N