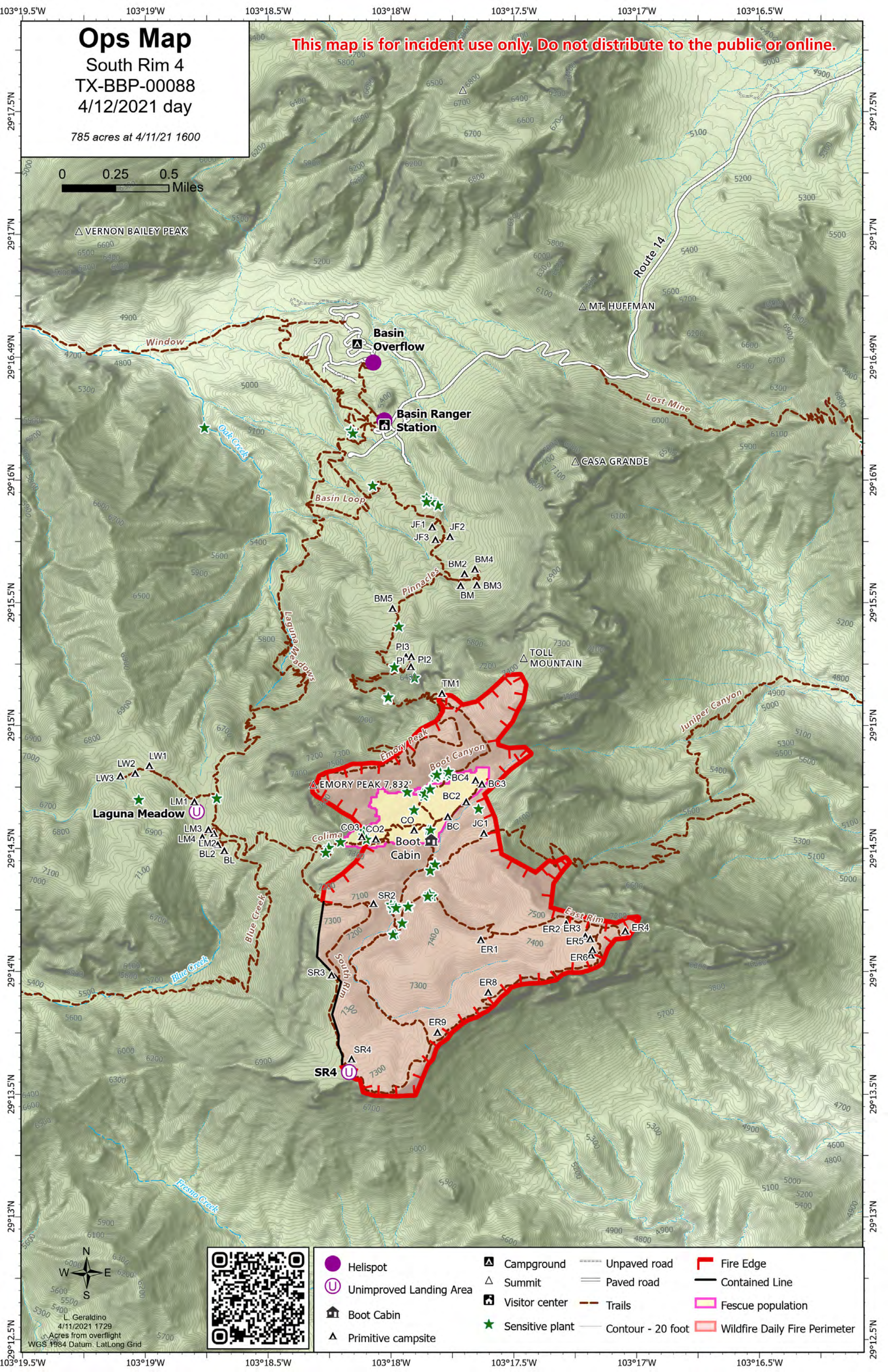
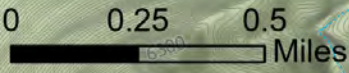


Ops Map

South Rim 4
TX-BBP-00088
4/12/2021 day

785 acres at 4/11/21 1600

This map is for incident use only. Do not distribute to the public or online.



△ VERNON BAILEY PEAK

△ MT. HUFFMAN

△ CASA GRANDE

△ TOLL MOUNTAIN

△ EMORY PEAK 7,832'

Laguna Meadow

Boot Cabin



- | | | | |
|---------------------------|-------------------|---------------------|---------------------------------|
| ● Helispot | △ Campground | ----- Unpaved road | ▬ Fire Edge |
| ⊕ Unimproved Landing Area | △ Summit | ==== Paved road | ▬ Contained Line |
| 🏠 Boot Cabin | 🏠 Visitor center | --- Trails | ▭ Fescue population |
| △ Primitive campsite | ★ Sensitive plant | — Contour - 20 foot | ▭ Wildfire Daily Fire Perimeter |

L. Geraldino
4/11/2021 1729
Acres from overflight
WGS 1984 Datum, Lat/Long Grid