

120°27.5'W 120°27'W 120°26.5'W 120°26'W 120°25.5'W 120°25'W 39°50'N

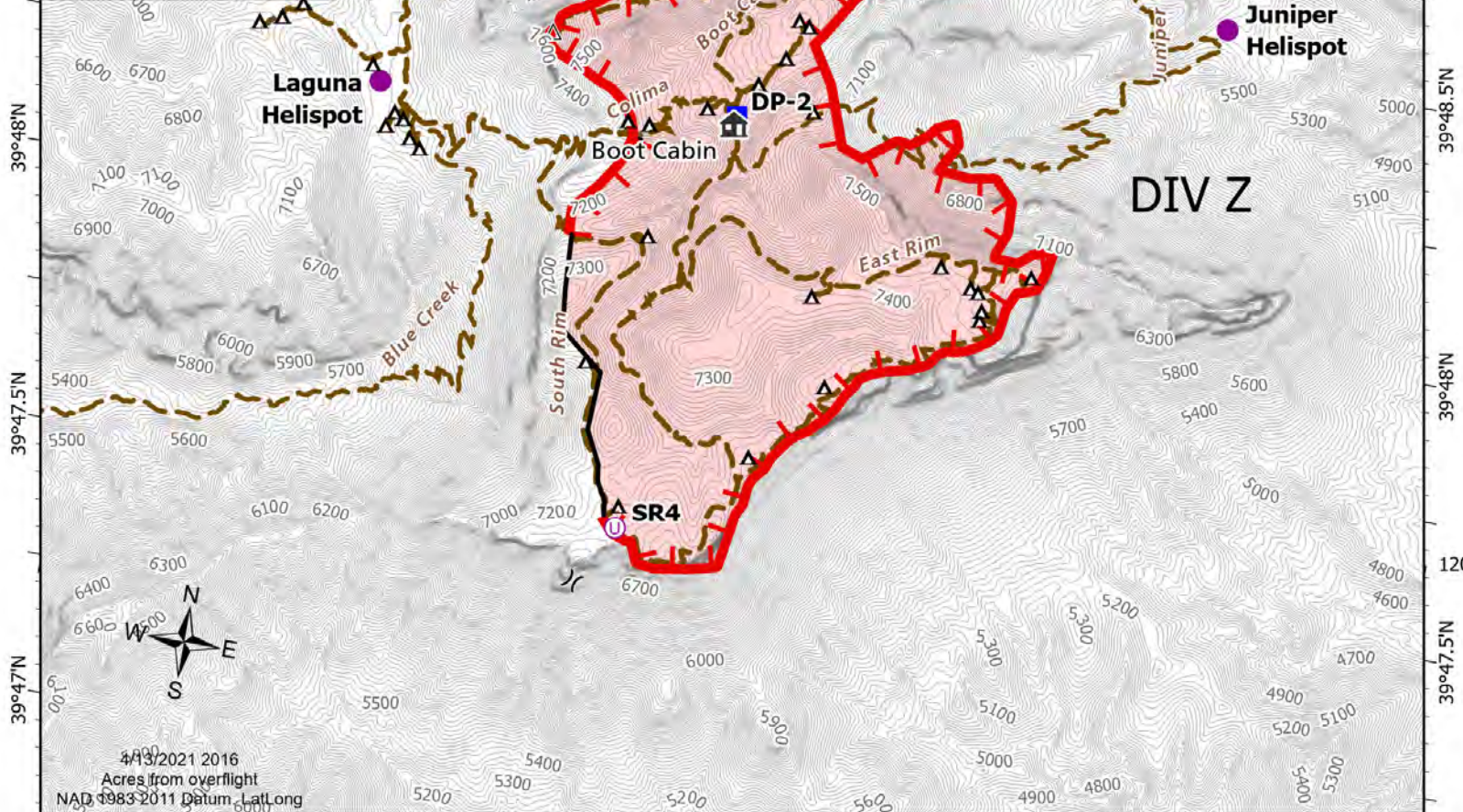
IAP Map

South Rim 4
TX-BBP-00088
4/14/21 Day

912 acres at 4/13/21 1200



- ▲ Primitive campsite
- ▲ Campground
- ▲ Summit
- 🏠 Visitor center
- 🏠 Boot Cabin
- 📍 Dip Site
- 📍 Helispot
- ⊕ Unimproved Landing Area
-) (Division Break
- 📍 Drop Point
- H Completed Hand Line
- 🔴 Fire Edge
- Contained Line
- 🔴 Wildfire Daily Fire Perimeter
- Trail - Moderately Developed
- Trail - Developed
- Unpaved road
- Paved road
- Contour - 20 foot



4/13/2021 2016
Acres from overflight
NAD 1983-2011 Datum, Lat/Long

120°27'W 120°26.5'W 120°26'W 120°25.5'W 120°25'W 120°24.5'W 120°24'W 39°47'N