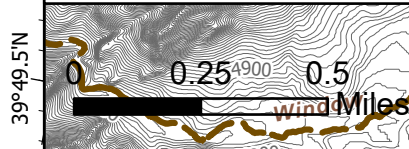


120°27.5'W 120°27'W 120°26.5'W 120°26'W 120°25.5'W 120°25'W 39°5

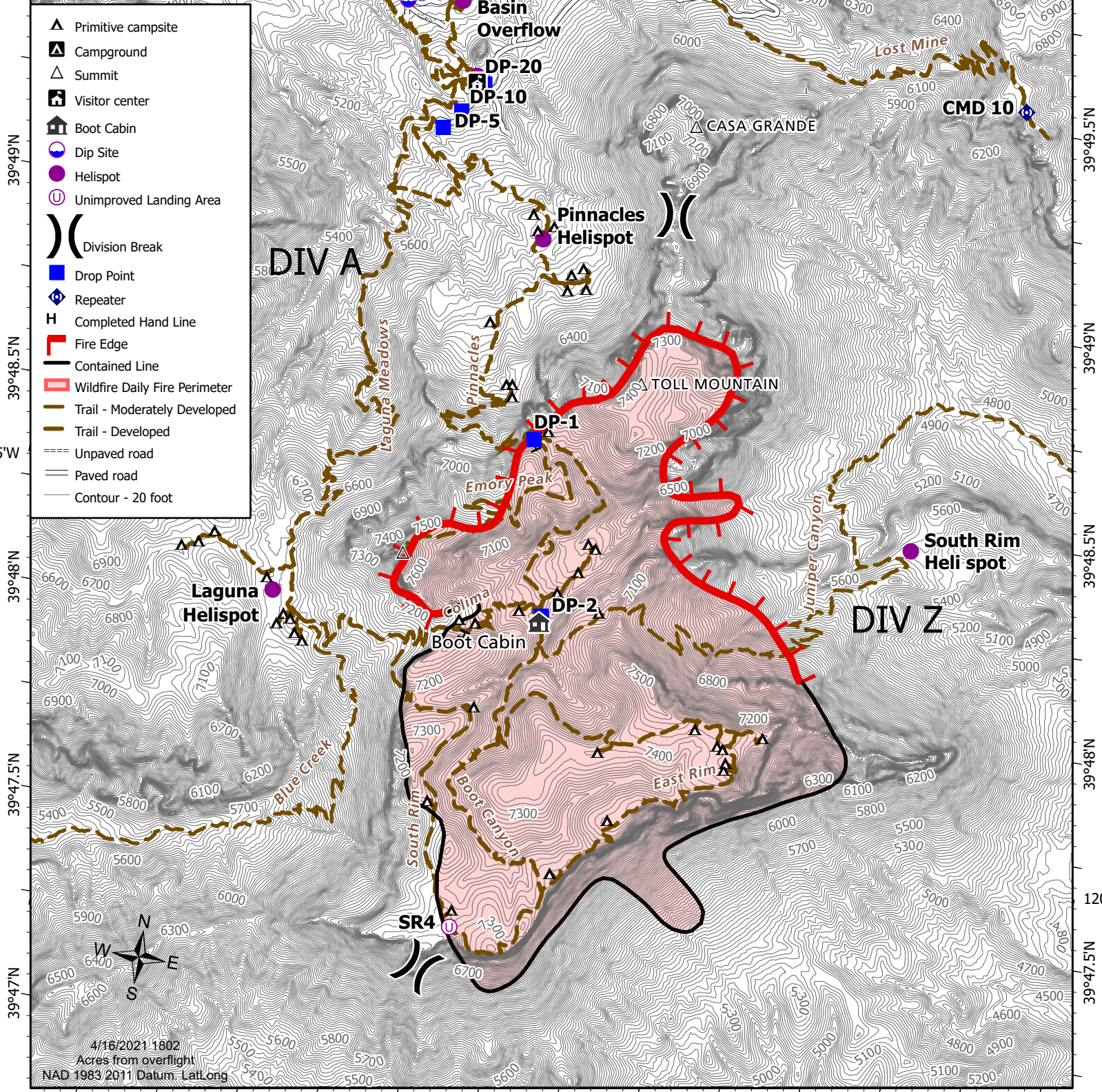
IAP Map

South Rim 4
TX-BBP-00088
4/17/21 Day

1341 acres at 4/15/21 1200



- ▲ Primitive campsite
- ▲ Campground
- ▲ Summit
- 🏠 Visitor center
- 🏠 Boot Cabin
- 📍 Dip Site
- 📍 Helispot
- 📍 Unimproved Landing Area
- ⎓ Division Break
- 📍 Drop Point
- 📍 Repeater
- H Completed Hand Line
- 🔥 Fire Edge
- 🔥 Contained Line
- 🔥 Wildfire Daily Fire Perimeter
- 👉 Trail - Moderately Developed
- 👉 Trail - Developed
- 👉 Unpaved road
- 👉 Paved road
- 👉 Contour - 20 foot



4/16/2021 1802
Acres from overflight
NAD 1983/2011 Datum: LatLong

120°27'W 120°26.5'W 120°26'W 120°25.5'W 120°25'W 120°24.5'W 120°24'W

39°50'N
39°49.5'N
39°49'N
39°48.5'N
39°48'N
39°47.5'N
39°47'N

39°50.5'N
39°50'N
39°49.5'N
39°49'N
39°48.5'N
39°48'N
39°47.5'N
39°47'N