

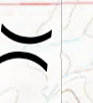
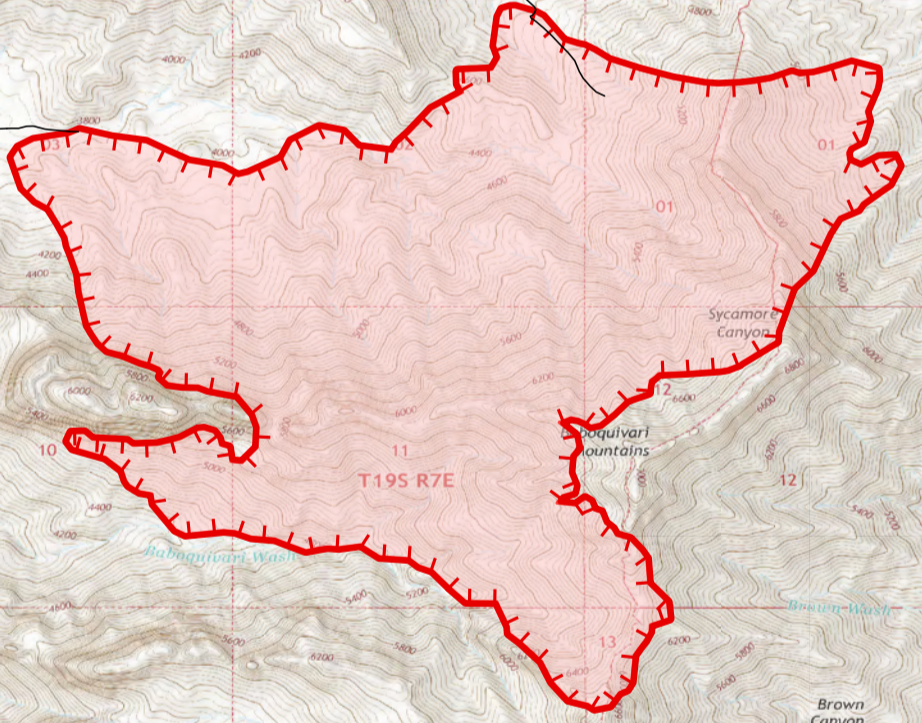
Medical Transportation Map
 Sycamore Canyon
 AZPPA-00327
 5/28/2021
 Appx 1,816 ac at 1400hrs
 5/27/2021



DIV A

DIV Y

DIV Z



Label	Latitude WGS84 DDM	Longitude WGS84 DDM
Elkhorn Helispot	31° 48.973' N	111° 30.096' W
Incident Command Post	32° 03.771' N	111° 19.150' W
Elkhorn Spike	31° 49.052' N	111° 29.225' W
Elkhorn Ranch	31° 49.166' N	111° 32.416' W
Kitt Peak	31° 57.827' N	111° 35.996' W
Las Delicious Ranch	31° 47.043' N	111° 30.826' W
Brown Canyon Education Center	31° 46.321' N	111° 33.294' W
Brown Canyon La Casita	31° 46.120' N	111° 32.937' W
Brown Canyon Farm House	31° 45.754' N	111° 32.322' W
H-3	31° 48.822' N	111° 34.902' W

- Wildfire Daily Fire Perimeter
- Helispot
- Division Break
- Camp
- Value at Risk
- Access or Improved Road
- Fire Edge
- County Roads

