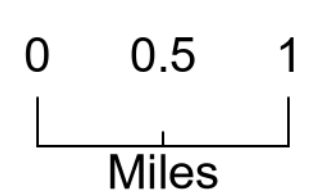


Air Ops Map
 Sycamore Canyon
 AZPPA-327
 5/29/2021

1,858 ac at 1100 hrs
 5/28/2021
 Acres from IR and GPS

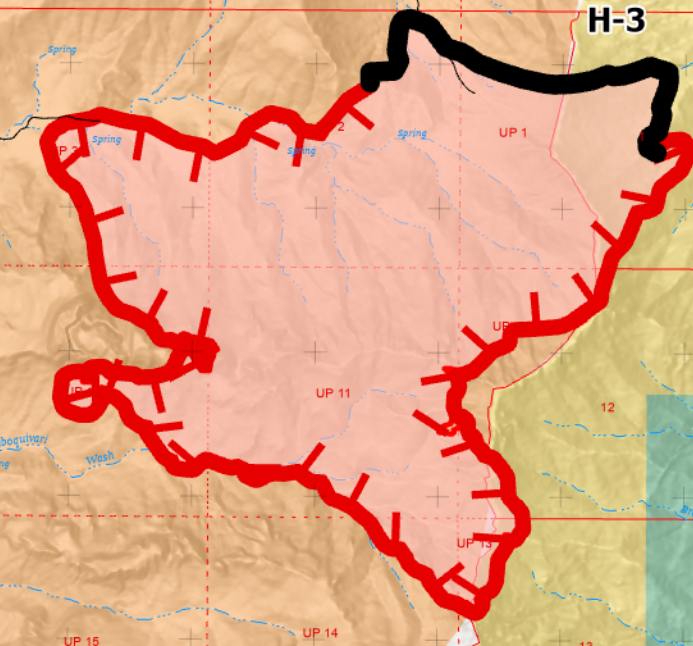


- ▬ Wildfire Daily Fire Perimeter
- ▬ County Roads
- Aerial Hazard
- Helispot
- Helibase
-)) Division Break
- ▬ Incident Command Post
- ▬ Drop Point
- ▬ Camp
- ▬ Value at Risk
- ▬ Planned Secondary Line
- ▬ Access or Improved Road
- ▬ Temporary Flight Restriction
- ▬ Fire Edge
- ▬ Contained Line
- ▬ Primary Routes
- ▬ Other State Lands
- ▬ U.S. Fish & Wildlife Service Lands
- ▬ Bureau of Land Management Lands
- ▬ Private; Local Government; Undesignated
- ▬ American Indian Reservation Boundary
- ▬ American Indian Reservation Land
- Label Point

DIV A

DIV Y

DIV Z



Brown Canyon Education Center
 Brown Canyon La Casita
 Brown Canyon Farm House
 Thomas Canyon Cabin

Elkhorn Ranch
 Elkhorn Helispot
 Elkhorn Spike

Las Delicious Ranch

Fresnel Camp

Point Type	Label	Latitude WGS84 DDM	Longitude WGS84 DDM
Helibase	Elkhorn Helispot	31° 48.972' N	111° 30.096' W
Incident Command Post	Elkhorn Ranch	32° 03.771' N	111° 19.150' W
Camp	Elkhorn Spike	31° 49.052' N	111° 29.225' W
Value at Risk	Elkhorn Ranch	31° 49.166' N	111° 32.416' W
Value at Risk	Kitt Peak	31° 57.827' N	111° 35.996' W
Value at Risk	Las Delicious Ranch	31° 47.043' N	111° 30.826' W
Helispot	H-3	31° 48.822' N	111° 34.902' W
Other		31° 49.540' N	111° 50.077' W
Other		31° 54.886' N	111° 52.984' W
Value at Risk	Brown Canyon Education Center	31° 46.321' N	111° 33.294' W
Value at Risk	Brown Canyon La Casita	31° 46.120' N	111° 32.937' W
Value at Risk	Brown Canyon Farm House	31° 45.754' N	111° 32.322' W
Drop Point	DP-41	31° 42.343' N	111° 31.853' W
Drop Point	DP-40	31° 41.869' N	111° 29.365' W
Drop Point	DP-40	31° 41.812' N	111° 29.245' W
Drop Point	DP-34	31° 47.018' N	111° 30.674' W
Drop Point	DP-10	31° 45.827' N	111° 28.393' W
Value at Risk	Thomas Canyon Cabin	31° 45.205' N	111° 34.030' W
Value at Risk	Fresnel Camp	31° 43.156' N	111° 34.736' W
Aerial Hazard	Kitt Peak	31° 57.847' N	111° 35.980' W