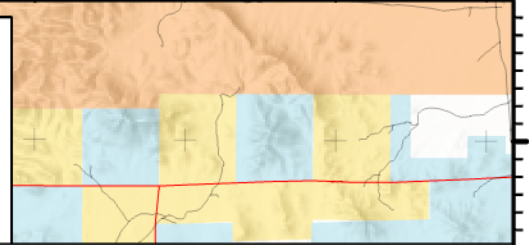
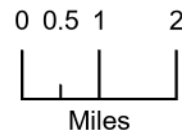


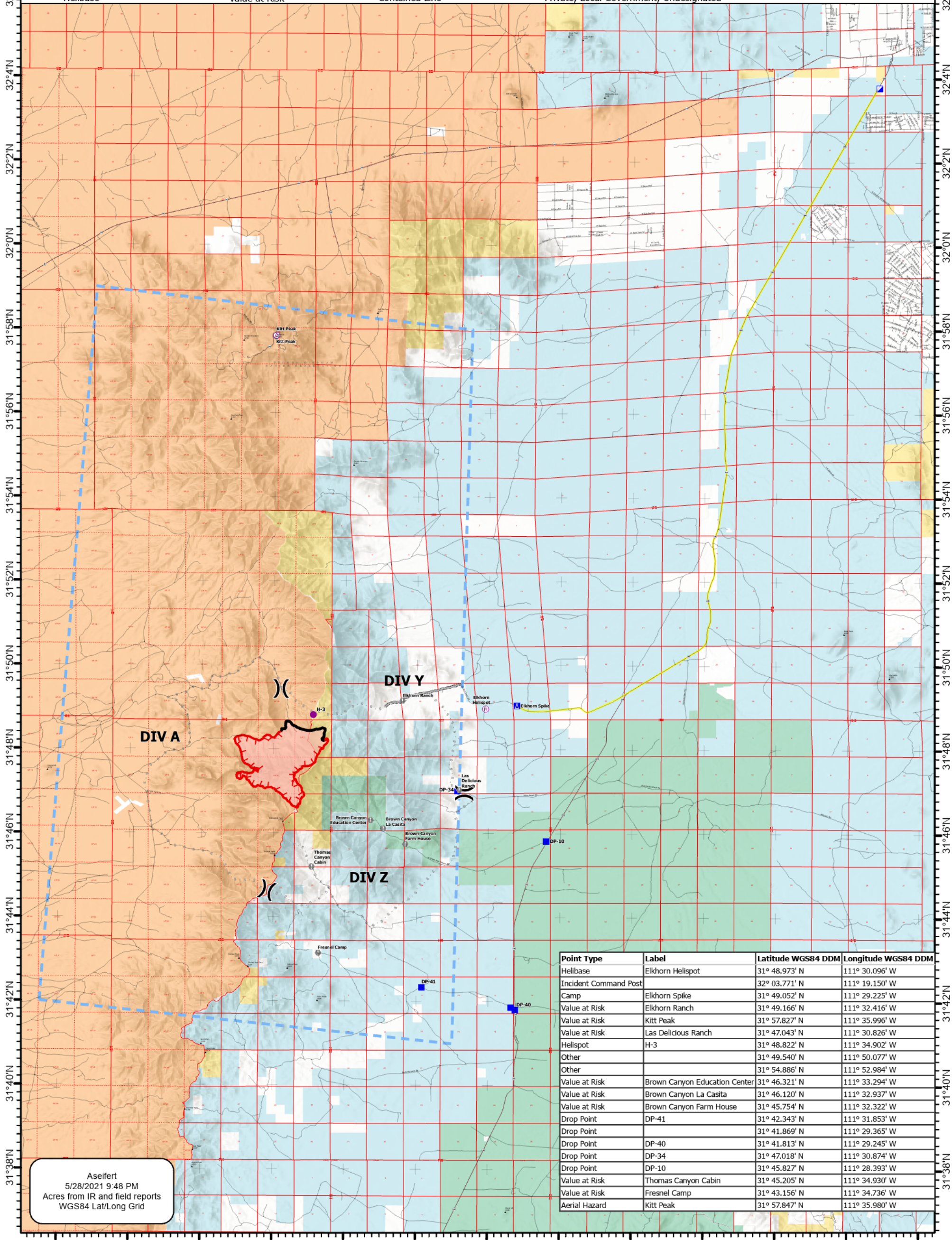
111°42'W 111°40'W 111°38'W 111°36'W 111°34'W 111°32'W 111°30'W 111°28'W 111°26'W 111°24'W 111°22'W 111°20'W 111°18'W

Pilot Map

AZPPA-327
 5/29/2021
 1,858 ac at 1100 hrs
 5/28/2021
 Acres from IR and GPS



- ▬ Wildfire Daily Fire Perimeter
- ▬ County Roads
- ⊙ Aerial Hazard
- Helispot
- ⊕ Helibase
-) (Division Break
- ▣ Incident Command Post
- ▣ Drop Point
- ▣ Camp
- Value at Risk
- - - Planned Secondary Line
- ▬ Access or Improved Road
- - - Temporary Flight Restriction
- ▬ Fire Edge
- ▬ Contained Line
- ▬ Primary Routes
- ▭ Other State Lands
- ▭ U.S. Fish & Wildlife Service Lands
- ▭ Bureau of Land Management Lands
- ▭ American Indian Reservation Boundary
- ▭ American Indian Reservation Land
- Label Point
- Private; Local Government; Undesignated



Aseifert
 5/28/2021 9:48 PM
 Acres from IR and field reports
 WGS84 Lat/Long Grid

Point Type	Label	Latitude WGS84 DDM	Longitude WGS84 DDM
Helibase	Elkhorn Helispot	31° 48.973' N	111° 30.096' W
Incident Command Post		32° 03.771' N	111° 19.150' W
Camp	Elkhorn Spike	31° 49.052' N	111° 29.225' W
Value at Risk	Elkhorn Ranch	31° 49.166' N	111° 32.416' W
Value at Risk	Kitt Peak	31° 57.827' N	111° 35.996' W
Value at Risk	Las Delicious Ranch	31° 47.043' N	111° 30.826' W
Helispot	H-3	31° 48.822' N	111° 34.902' W
Other		31° 49.540' N	111° 50.077' W
Other		31° 54.886' N	111° 52.984' W
Value at Risk	Brown Canyon Education Center	31° 46.321' N	111° 33.294' W
Value at Risk	Brown Canyon La Casita	31° 46.120' N	111° 32.937' W
Value at Risk	Brown Canyon Farm House	31° 45.754' N	111° 32.322' W
Drop Point	DP-41	31° 42.343' N	111° 31.853' W
Drop Point		31° 41.869' N	111° 29.365' W
Drop Point	DP-40	31° 41.813' N	111° 29.245' W
Drop Point	DP-34	31° 47.018' N	111° 30.874' W
Drop Point	DP-10	31° 45.827' N	111° 28.393' W
Value at Risk	Thomas Canyon Cabin	31° 45.205' N	111° 34.930' W
Value at Risk	Fresnel Camp	31° 43.156' N	111° 34.736' W
Aerial Hazard	Kitt Peak	31° 57.847' N	111° 35.980' W

111°42'W 111°40'W 111°38'W 111°36'W 111°34'W 111°32'W 111°30'W 111°28'W 111°26'W 111°24'W 111°22'W 111°20'W 111°18'W