

Medical Transportation Map

Sycamore Canyon
AZPPA-00327
5/29/2021

Appx 1,858 ac at 1100hrs
5/28/2021

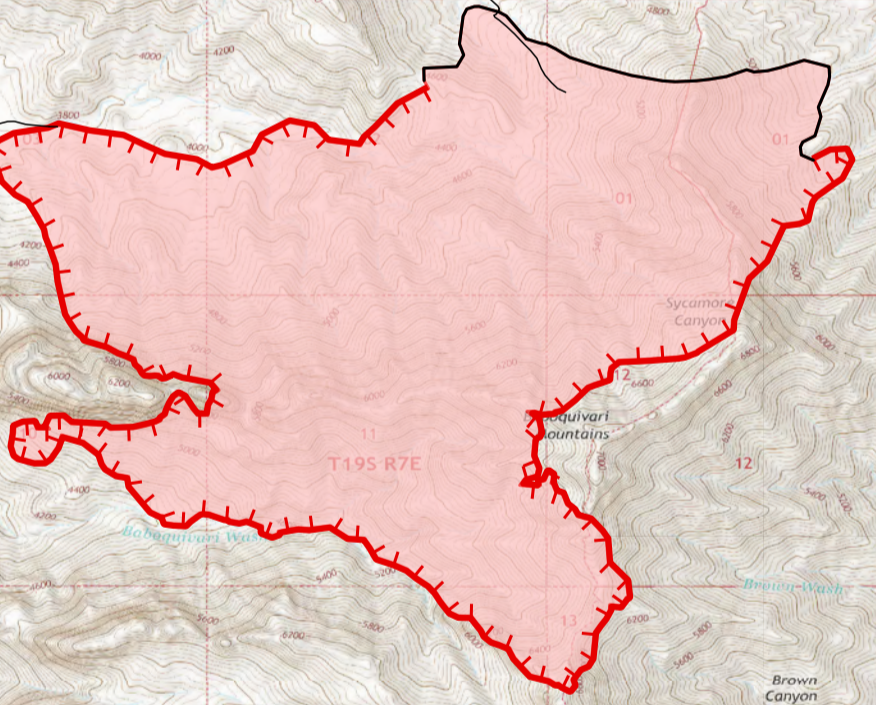
Label Point	Value at Risk
Helispot	Planned Secondary Line
Hellbase	Access or Improved Road
Division Break	Fire Edge
Drop Point	Contained Line
Camp	County Roads



DIV A

DIV Y

DIV Z



Label	Latitude WGS84 DDM	Longitude WGS84 DDM
Elkhorn Helibase	31° 48.973' N	111° 30.096' W
Incident Command Center	32° 03.771' N	111° 19.150' W
Elkhorn Spike	31° 49.052' N	111° 29.225' W
Elkhorn Ranch	31° 49.166' N	111° 32.416' W
Kitt Peak	31° 57.827' N	111° 35.996' W
Las Delicious Ranch	31° 47.043' N	111° 30.826' W
H-3	31° 48.822' N	111° 34.902' W
Brown Canyon Education Center	31° 46.321' N	111° 33.294' W
Brown Canyon La Casita	31° 46.120' N	111° 32.937' W
Brown Canyon Farm House	31° 45.754' N	111° 32.322' W
DP-41	31° 42.343' N	111° 31.853' W
DP-40	31° 41.813' N	111° 29.245' W
DP-34	31° 47.018' N	111° 30.874' W
DP-10	31° 45.827' N	111° 28.393' W
Thomas Canyon Cabin	31° 45.205' N	111° 34.930' W
Fresnel Camp	31° 43.156' N	111° 34.736' W
Kitt Peak	31° 57.847' N	111° 35.980' W

