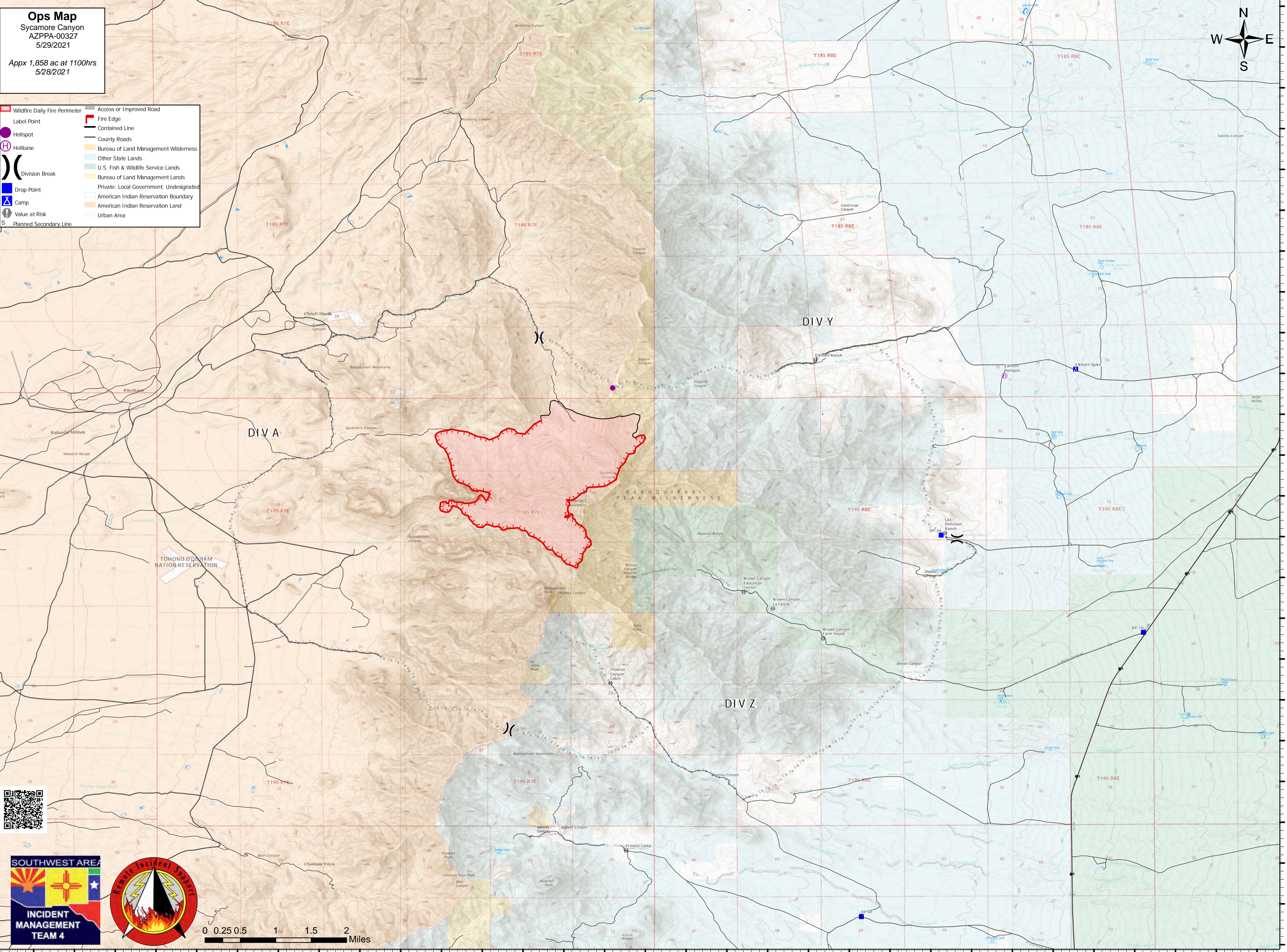


Ops Map
Sycamore Canyon
AZPPA-00327
5/29/2021
Appx 1,858 ac at 1100hrs
5/28/2021



- Wildfire Daily Fire Perimeter
- Label Point
- Helispot
- Helibase
- Division Break
- Drop Point
- Camp
- Value at Risk
- Planned Secondary Line
- Access or Improved Road
- Fire Edge
- Contained Line
- County Roads
- Bureau of Land Management Wilderness
- Other State Lands
- U.S. Fish & Wildlife Service Lands
- Bureau of Land Management Lands
- Private: Local Government: Undesignated
- American Indian Reservation Boundary
- American Indian Reservation Land
- Urban Area



111° 42'W 111° 41'W 111° 40'W 111° 39'W 111° 38'W 111° 37'W 111° 36.01'W 111° 35'W 111° 34'W 111° 33'W 111° 32'W 111° 31'W 111° 30'W 111° 29'W 111° 28'W 111° 27'W

31° 53'N 31° 52'N 31° 51'N 31° 50'N 31° 49'N 31° 48'N 31° 47'N 31° 46'N 31° 45'N 31° 44'N 31° 43'N 31° 42'N