

# Air Ops Map

## Sycamore Canyon

### AZPPA-327

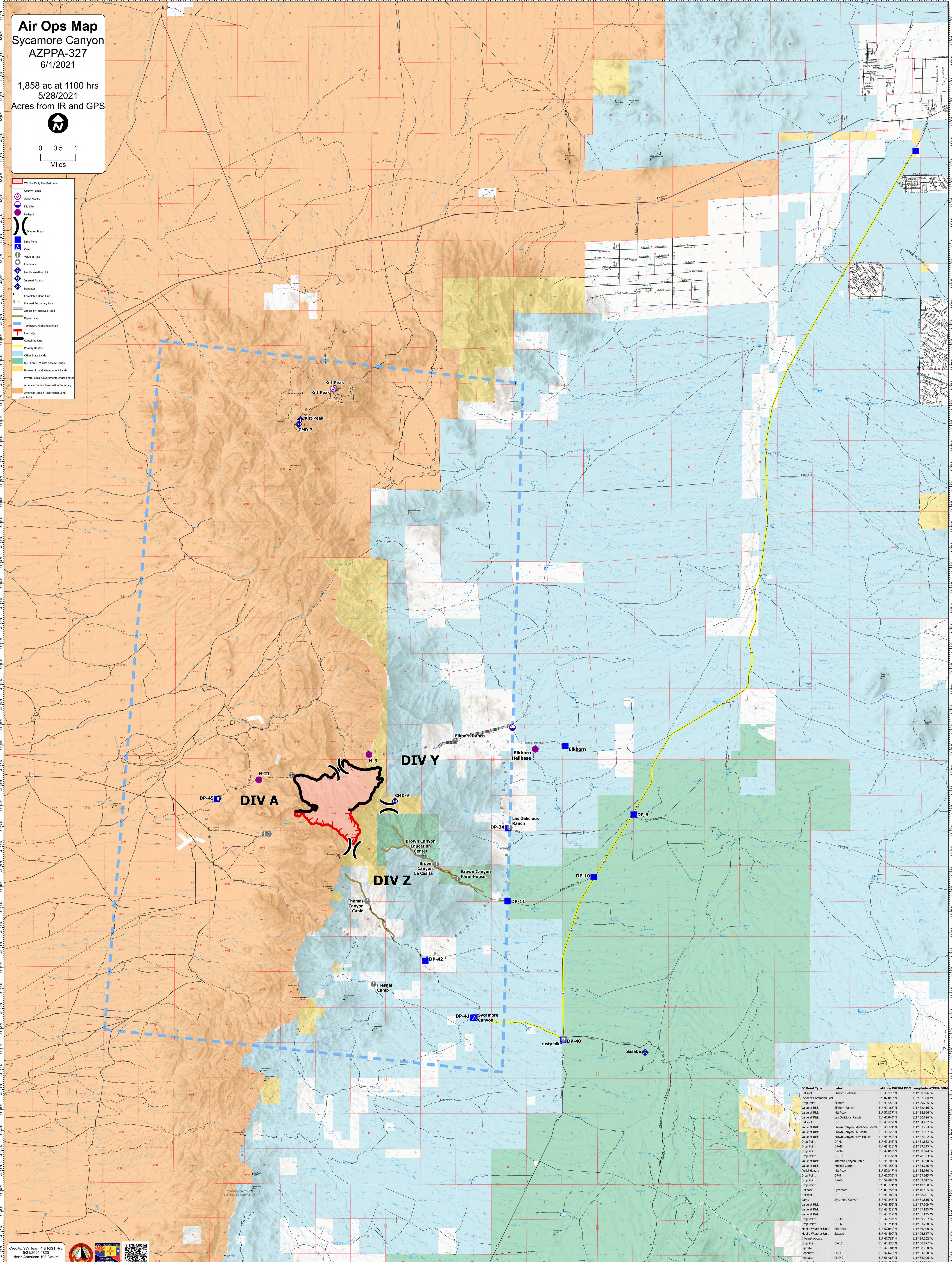
6/1/2021

1,858 ac at 1100 hrs  
5/28/2021  
Acres from IR and GPS



0 0.5 1  
Miles

- Wildlife Only Fire Perimeter
- County Roads
- Aerial Hazard
- Dip Site
- Helipad
- Division Break
- Drop Point
- Camp
- Value at Risk
- Landmark
- Mobile Weather Unit
- Tethered Access
- Repeater
- Completed Hand Line
- Planned Secondary Line
- Access or Improved Road
- Repair Line
- Temporary Flight Restriction
- Fire Edge
- Contained Line
- Primary Routes
- Other State Lands
- U.S. Fish & Wildlife Service Lands
- Bureau of Land Management Lands
- Private Local Government Undesignated
- American Indian Reservation Boundary
- American Indian Reservation Land
- Labor Dist



PC Point Type	Label	Latitude WGS84 DTM	Longitude WGS84 DTM
Helipad	Elkhorn Helibase	31° 48.973' N	111° 30.090' W
Incident Command Post	Elkhorn	32° 07.019' N	110° 57.800' W
Drop Point	Elkhorn	31° 49.027' N	111° 30.820' W
Value at Risk	Elkhorn Ranch	31° 49.366' N	111° 32.416' W
Value at Risk	Kitt Peak	31° 57.627' N	111° 35.990' W
Value at Risk	Las Delicious Ranch	31° 47.612' N	111° 30.940' W
Helipad	H-3	31° 48.822' N	111° 34.902' W
Value at Risk	Brown Canyon Education Center	31° 46.321' N	111° 33.294' W
Value at Risk	Brown Canyon La Casita	31° 45.207' N	111° 33.077' W
Value at Risk	Brown Canyon Farm House	31° 45.254' N	111° 33.322' W
Drop Point	DP-41	31° 42.343' N	111° 31.853' W
Drop Point	DP-40	31° 41.812' N	111° 29.941' W
Drop Point	DP-34	31° 47.618' N	111° 30.874' W
Drop Point	DP-10	31° 45.827' N	111° 28.393' W
Value at Risk	Thomas Canyon Cabin	31° 45.050' N	111° 34.938' W
Value at Risk	Fresnel Camp	31° 43.150' N	111° 34.730' W
Aerial Hazard	Kitt Peak	31° 57.647' N	111° 35.960' W
Drop Point	DP-8	31° 42.770' N	111° 27.840' W
Drop Point	DP-60	31° 54.990' N	111° 53.047' W
Drop Point	Sycamore	32° 03.771' N	111° 19.150' W
Helibase	Elkhorn Helibase	32° 08.254' N	111° 10.400' W
Helipad	H-21	31° 48.382' N	111° 30.820' W
Camp	Sycamore Canyon	31° 42.346' N	111° 31.810' W
Value at Risk	Sycamore Canyon	31° 46.250' N	111° 37.900' W
Value at Risk	Sycamore Canyon	31° 48.312' N	111° 31.300' W
Value at Risk	Sycamore Canyon	31° 48.312' N	111° 37.135' W
Drop Point	DP-45	31° 47.200' N	111° 39.260' W
Drop Point	DP-42	31° 42.317' N	111° 28.907' W
Mobile Weather Unit	Kitt Peak	31° 57.680' N	111° 36.940' W
Mobile Weather Unit	Sasabe	31° 41.502' N	111° 28.907' W
Internet Access	Sasabe	31° 42.317' N	111° 28.907' W
Drop Point	DP-11	31° 45.230' N	111° 30.877' W
Dip Site	Kitt Peak	31° 49.511' N	111° 30.750' W
Repeater	Kitt Peak	31° 47.270' N	111° 34.940' W
Repeater	CHD-7	31° 56.968' N	111° 36.990' W
Landmark	rusty bike	31° 41.832' N	111° 29.240' W
Landmark	rusty bike	31° 46.822' N	111° 33.077' W