

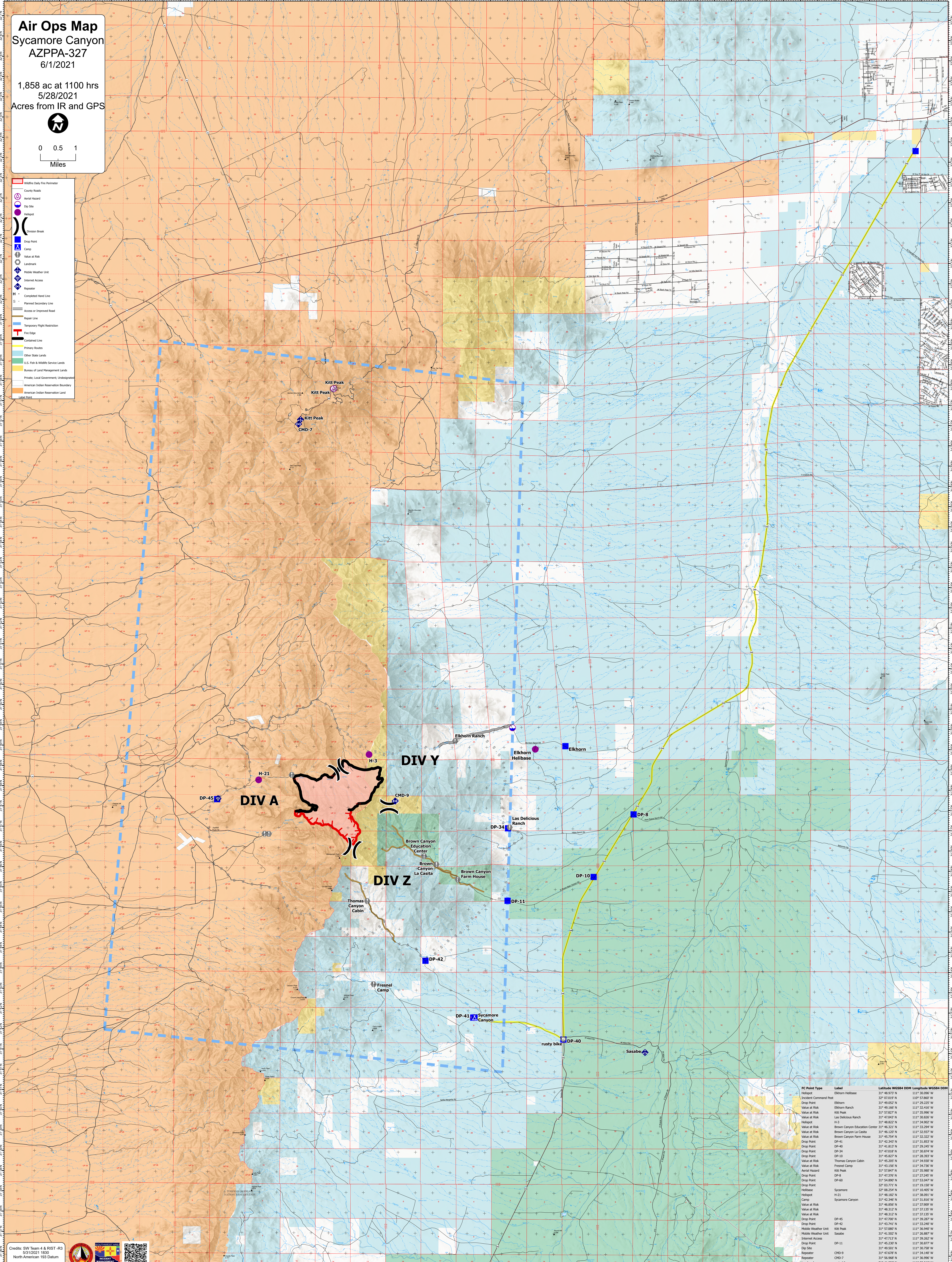
Air Ops Map
 Sycamore Canyon
 AZPPA-327
 6/1/2021

1,858 ac at 1100 hrs
 5/28/2021
 Acres from IR and GPS



0 0.5 1
 Miles

- Wildlife Daily Fire Perimeter
- County Roads
- Aerial Road
- Dip Site
- Helipad
- Division Break
- Drop Point
- Camp
- Value at Risk
- Landmark
- Mobile Weather Unit
- Incident Access
- Regulator
- Completed Hand Line
- Planned Secondary Road
- Access or Improved Road
- Repair Line
- Temporary Flight Restriction
- Fire Edge
- Contained Line
- Primary Routes
- Other State Lands
- U.S. Fish & Wildlife Service Lands
- Bureau of Land Management Lands
- Private Local Government Undesignated
- American Indian Reservation Boundary
- American Indian Reservation Land
- Label Data



DIV A

DIV Y

DIV Z

FC Point Type	Label	Latitude WGS84 DTM	Longitude WGS84 DTM
Helipad	Elkhorn Helibase	31° 48.973' N	111° 30.696' W
Incident Command Post	Elkhorn	32° 07.019' N	110° 57.802' W
Drop Point	Elkhorn Ranch	31° 49.366' N	111° 32.416' W
Value at Risk	Kitt Peak	31° 57.627' N	111° 35.996' W
Value at Risk	Las Delicias Ranch	31° 47.617' N	111° 30.847' W
Helipad	H-3	31° 48.822' N	111° 34.902' W
Value at Risk	Brown Canyon Education Center	31° 46.321' N	111° 33.294' W
Value at Risk	Brown Canyon La Casita	31° 45.254' N	111° 33.322' W
Value at Risk	Brown Canyon Farm House	31° 45.254' N	111° 33.322' W
Drop Point	DP-41	31° 42.343' N	111° 35.857' W
Drop Point	DP-40	31° 41.217' N	111° 39.401' W
Drop Point	DP-34	31° 47.618' N	111° 30.874' W
Drop Point	DP-10	31° 45.827' N	111° 28.393' W
Value at Risk	Thomas Canyon Cabin	31° 45.205' N	111° 34.507' W
Drop Point	DP-11	31° 43.156' N	111° 34.730' W
Aerial Hazard	Kitt Peak	31° 57.627' N	111° 35.997' W
Drop Point	DP-8	31° 42.776' N	111° 32.847' W
Drop Point	DP-60	31° 54.899' N	111° 53.047' W
Drop Point	Sycamore	32° 03.771' N	111° 19.159' W
Helipad	H-21	32° 08.254' N	111° 16.463' W
Camp	Sycamore Canyon	31° 42.346' N	111° 31.816' W
Value at Risk	rusty bike	31° 46.859' N	111° 37.969' W
Value at Risk	Sasabe	31° 48.312' N	111° 37.137' W
Value at Risk	Sasabe	31° 48.312' N	111° 37.135' W
Drop Point	DP-45	31° 47.500' N	111° 39.267' W
Drop Point	DP-42	31° 42.717' N	111° 39.267' W
Mobile Weather Unit	Kitt Peak	31° 57.687' N	111° 36.940' W
Mobile Weather Unit	Sasabe	31° 41.502' N	111° 26.867' W
Incident Access	DP-11	31° 45.239' N	111° 30.877' W
Dip Site	DP-41	31° 49.501' N	111° 30.758' W
Regulator	CMD-9	31° 47.276' N	111° 34.902' W
Regulator	CMD-7	31° 56.968' N	111° 36.996' W
Landmark	rusty bike	31° 41.828' N	111° 29.246' W
Landmark	rusty bike	31° 46.859' N	111° 37.969' W