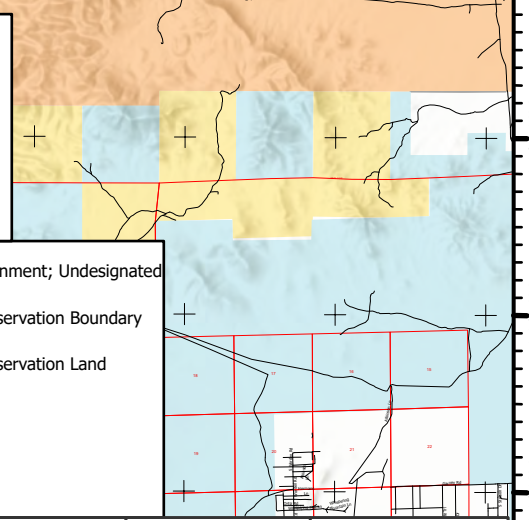
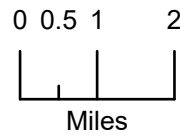


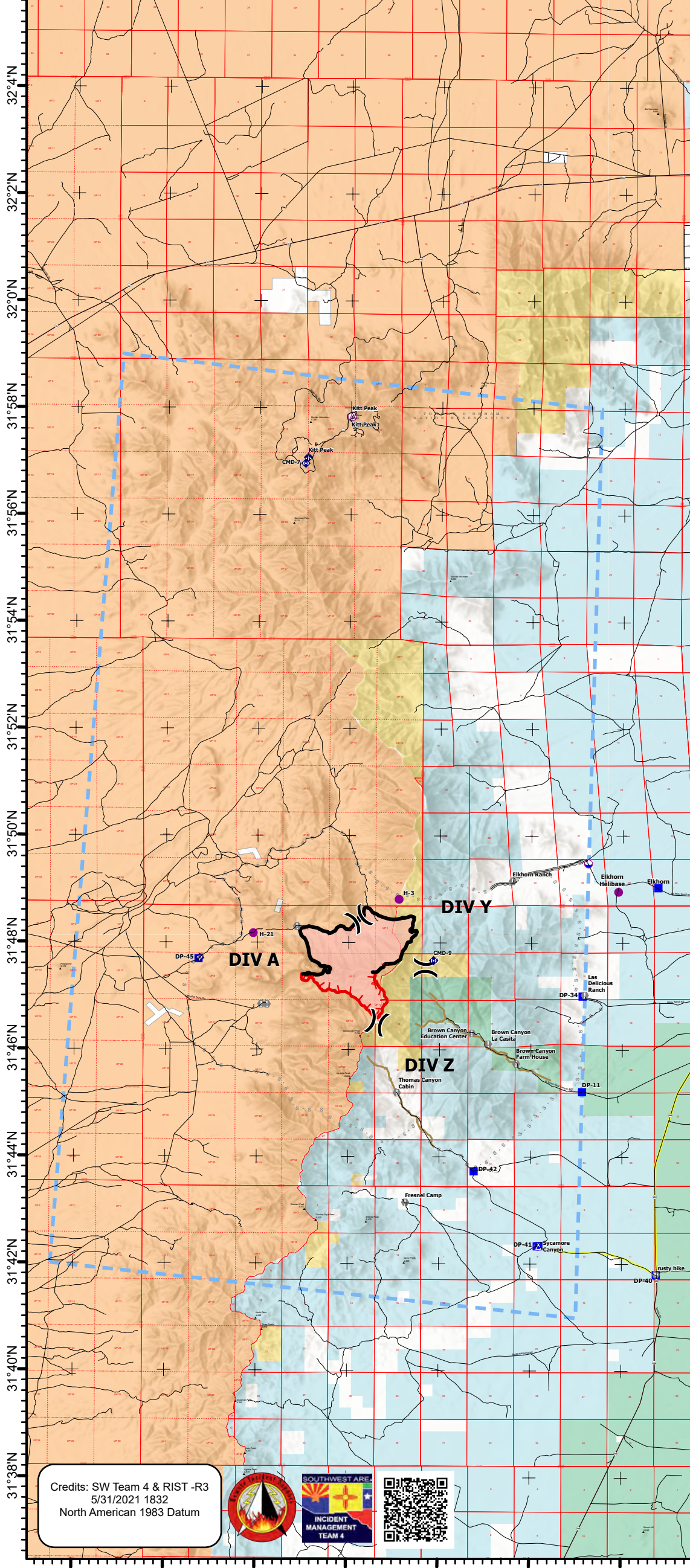
111°42'W 111°40'W 111°38'W 111°36'W 111°34'W 111°32'W 111°30'W 111°28'W 111°26'W 111°24'W 111°22'W 111°20'W 111°18'W

# Pilot Map

AZPPA-327  
6/1/2021  
1,858 ac at 1100 hrs  
5/28/2021  
Acres from IR and GPS



- ▬ Wildfire Daily Fire Perimeter
- ▬ County Roads
- ⊗ Aerial Hazard
- ⊗ Dip Site
- ⊗ Helispot
- ⊗ Division Break
- ⬮ Drop Point
- ⬮ Camp
- ⬮ Value at Risk
- ⬮ Landmark
- ⬮ Mobile Weather Unit
- ⬮ Internet Access
- ⬮ Repeater
- ⬮ Completed Hand Line
- ⬮ Planned Secondary Line
- ⬮ Access or Improved Road
- ⬮ Repair Line
- ⬮ Temporary Flight Restriction
- ▬ Fire Edge
- ▬ Contained Line
- ▬ Primary Routes
- ▬ Other State Lands
- ▬ U.S. Fish & Wildlife Service Lands
- ▬ Bureau of Land Management Lands
- Private; Local Government; Undesignated
- American Indian Reservation Boundary
- American Indian Reservation Land
- + Label Point



FC Point Type	Label	Latitude WGS84 DDM	Longitude WGS84 DDM
Helispot	Elkhorn Helibase	31° 48.973' N	111° 30.096' W
Incident Command Post	Incident Command Post	32° 07.019' N	110° 57.860' W
Drop Point	Elkhorn	31° 49.052' N	111° 29.225' W
Value at Risk	Elkhorn Ranch	31° 49.166' N	111° 32.416' W
Value at Risk	Kitt Peak	31° 57.827' N	111° 35.996' W
Value at Risk	Las Delicious Ranch	31° 47.043' N	111° 30.826' W
Helispot	H-3	31° 48.822' N	111° 34.902' W
Value at Risk	Brown Canyon Education Center	31° 46.321' N	111° 33.294' W
Value at Risk	Brown Canyon La Casita	31° 46.120' N	111° 32.937' W
Value at Risk	Brown Canyon Farm House	31° 45.754' N	111° 32.322' W
Drop Point	DP-41	31° 42.343' N	111° 31.853' W
Drop Point	DP-40	31° 41.813' N	111° 29.245' W
Drop Point	DP-34	31° 47.018' N	111° 30.874' W
Drop Point	DP-10	31° 45.827' N	111° 28.393' W
Value at Risk	Thomas Canyon Cabin	31° 45.205' N	111° 34.930' W
Value at Risk	Fresnel Camp	31° 43.156' N	111° 34.736' W
Aerial Hazard	Kitt Peak	31° 57.847' N	111° 35.980' W
Drop Point	DP-8	31° 47.376' N	111° 27.245' W
Drop Point	DP-60	31° 54.890' N	111° 53.047' W
Drop Point	old type 3 ICP	32° 03.771' N	111° 19.150' W
Helibase	Sycamore	32° 08.254' N	111° 10.405' W
Helispot	H-21	31° 48.182' N	111° 38.091' W
Camp	Sycamore Canyon	31° 42.346' N	111° 31.816' W
Value at Risk		31° 46.856' N	111° 37.909' W
Value at Risk		31° 48.312' N	111° 37.135' W
Value at Risk		31° 48.312' N	111° 37.135' W
Drop Point	DP-45	31° 47.700' N	111° 39.287' W
Drop Point	DP-42	31° 43.741' N	111° 33.240' W
Mobile Weather Unit	Kitt Peak	31° 57.080' N	111° 36.940' W
Mobile Weather Unit	Sasabe	31° 41.502' N	111° 26.887' W
Internet Access		31° 47.713' N	111° 39.262' W
Drop Point	DP-11	31° 45.230' N	111° 30.877' W
Dip Site		31° 49.501' N	111° 30.758' W
Repeater	CMD-9	31° 47.678' N	111° 34.140' W
Repeater	CMD-7	31° 56.968' N	111° 36.996' W

**DIV A**  
**DIV Y**  
**DIV Z**

Credits: SW Team 4 & RIST -R3  
5/31/2021 1832  
North American 1983 Datum



111°42'W 111°40'W 111°38'W 111°36'W 111°34'W 111°32'W 111°30'W 111°28'W 111°26'W 111°24'W 111°22'W 111°20'W 111°18'W