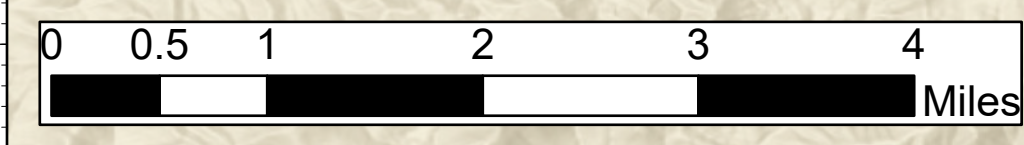


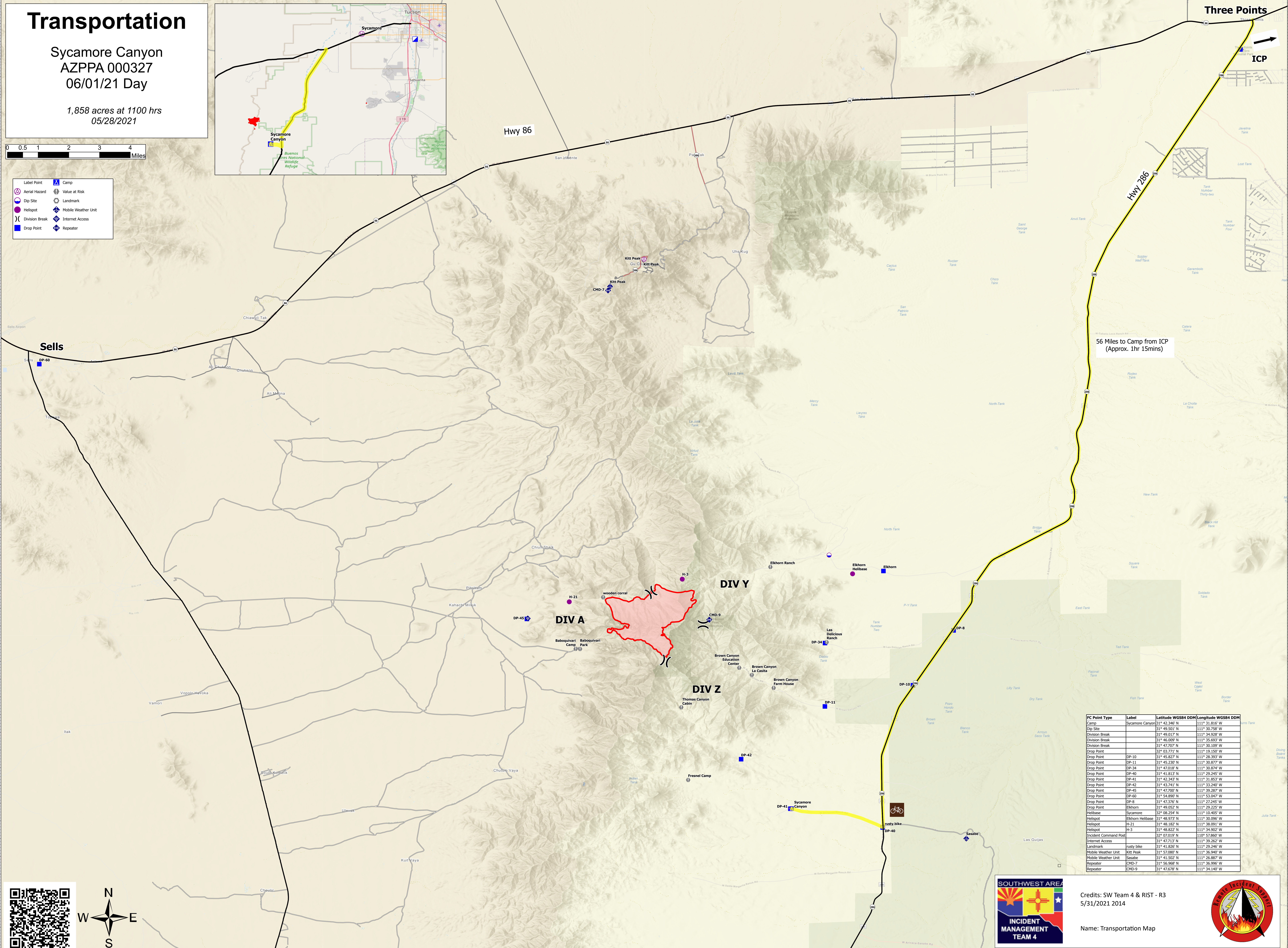
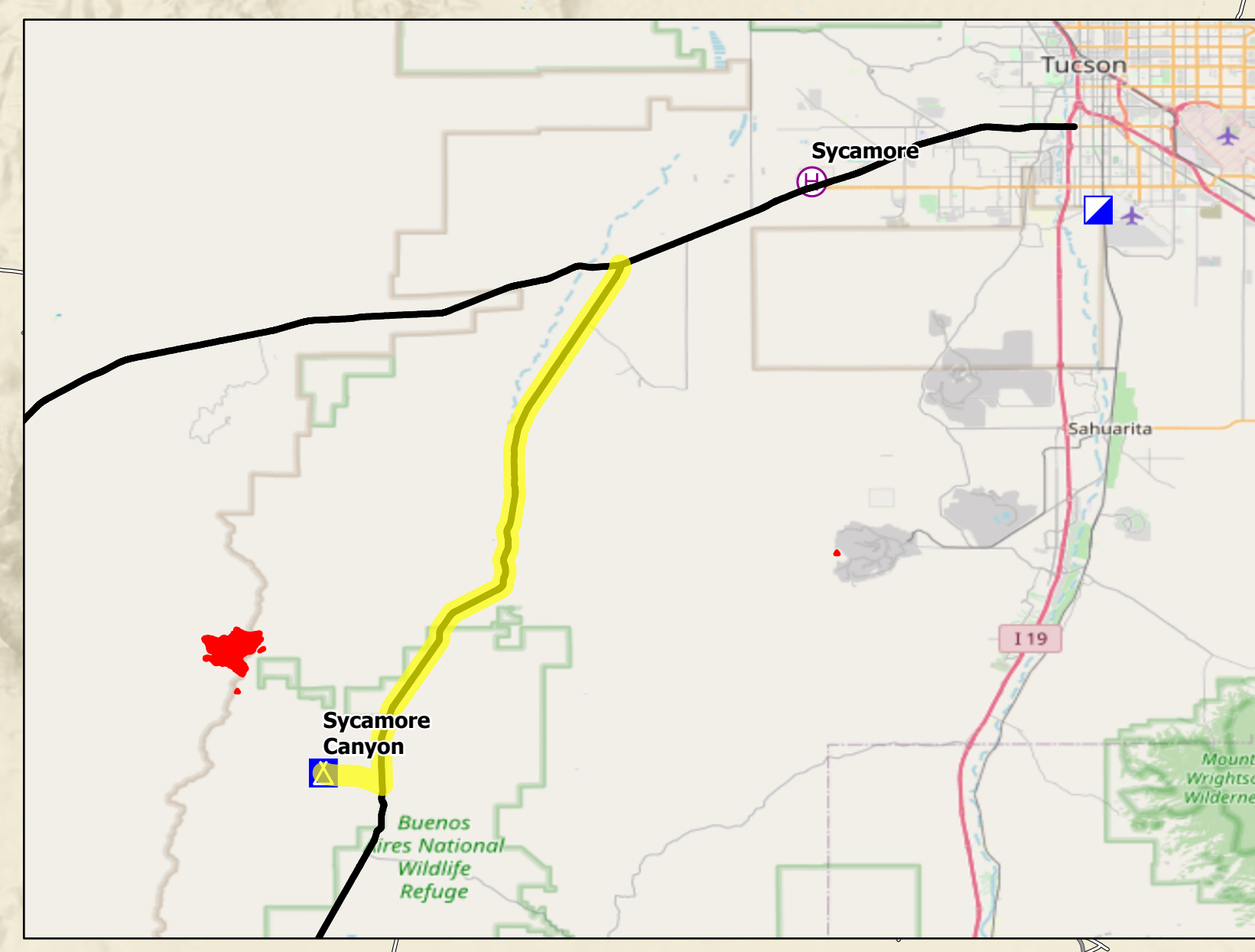
Transportation

Sycamore Canyon
AZPPA 000327
06/01/21 Day

1,858 acres at 1100 hrs
05/28/2021



- Label Point
- Aerial Hazard
- Dip Site
- Helispot
- Division Break
- Drop Point
- Camp
- Value at Risk
- Landmark
- Mobile Weather Unit
- Internet Access
- Repeater



56 Miles to Camp from ICP
(Approx. 1hr 15mins)

FC Point Type	Label	Latitude WGS84 DDM	Longitude WGS84 DDM
Camp	Sycamore Canyon	31° 42.346' N	111° 31.816' W
Dip Site		31° 49.501' N	111° 30.788' W
Division Break		31° 49.017' N	111° 34.928' W
Division Break		31° 46.009' N	111° 35.609' W
Division Break		31° 47.707' N	111° 30.109' W
Drop Point		32° 03.771' N	111° 19.150' W
Drop Point	DP-10	31° 45.827' N	111° 28.393' W
Drop Point	DP-11	31° 45.230' N	111° 30.877' W
Drop Point	DP-34	31° 47.018' N	111° 30.874' W
Drop Point	DP-40	31° 41.813' N	111° 29.245' W
Drop Point	DP-41	31° 42.343' N	111° 31.853' W
Drop Point	DP-42	31° 43.741' N	111° 33.240' W
Drop Point	DP-45	31° 47.000' N	111° 33.287' W
Drop Point	DP-60	31° 54.890' N	111° 53.047' W
Drop Point	DP-8	31° 47.376' N	111° 27.245' W
Drop Point	Elkhorn	31° 49.052' N	111° 29.225' W
Helibase	Sycamore	32° 08.254' N	111° 18.405' W
Helispot	Elkhorn Helibase	31° 48.973' N	111° 30.096' W
Helispot	H-21	31° 48.182' N	111° 38.091' W
Helispot	H-3	31° 48.822' N	111° 34.902' W
Incident Command Post		32° 07.019' N	110° 57.869' W
Internet Access		31° 47.713' N	111° 39.262' W
Landmark	rusty bike	31° 41.826' N	111° 29.246' W
Mobile Weather Unit	Kitt Peak	31° 57.080' N	111° 36.940' W
Mobile Weather Unit	Sasabe	31° 41.502' N	111° 36.807' W
Repeater	CMD-7	31° 56.968' N	111° 36.996' W
Repeater	CMD-9	31° 47.678' N	111° 34.140' W



Credits: SW Team 4 & RIST - R3
5/31/2021 2014

Name: Transportation Map

