

OPERATIONS

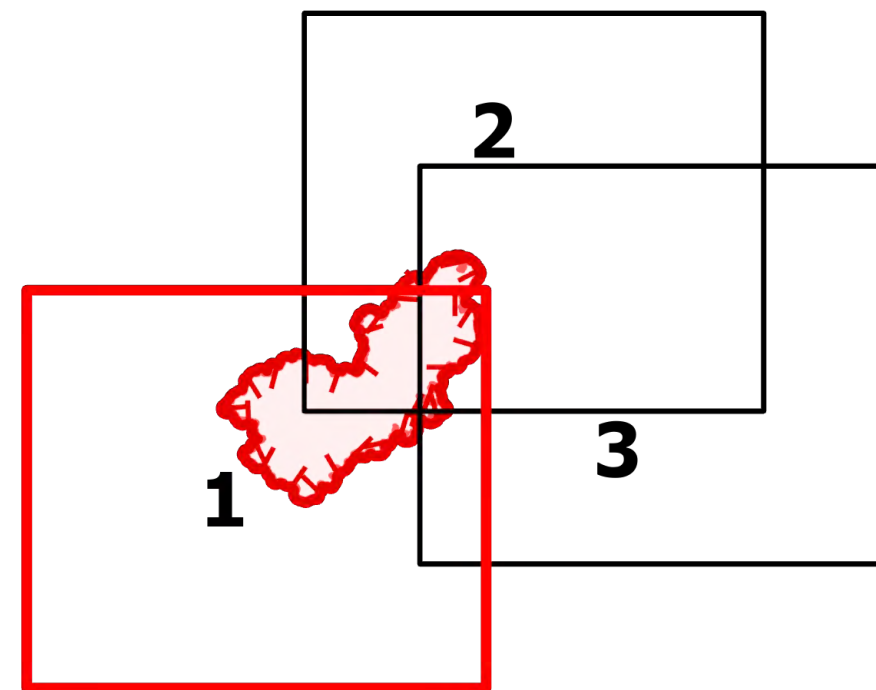
Branch I

Telegraph

AZ-TNF-1255

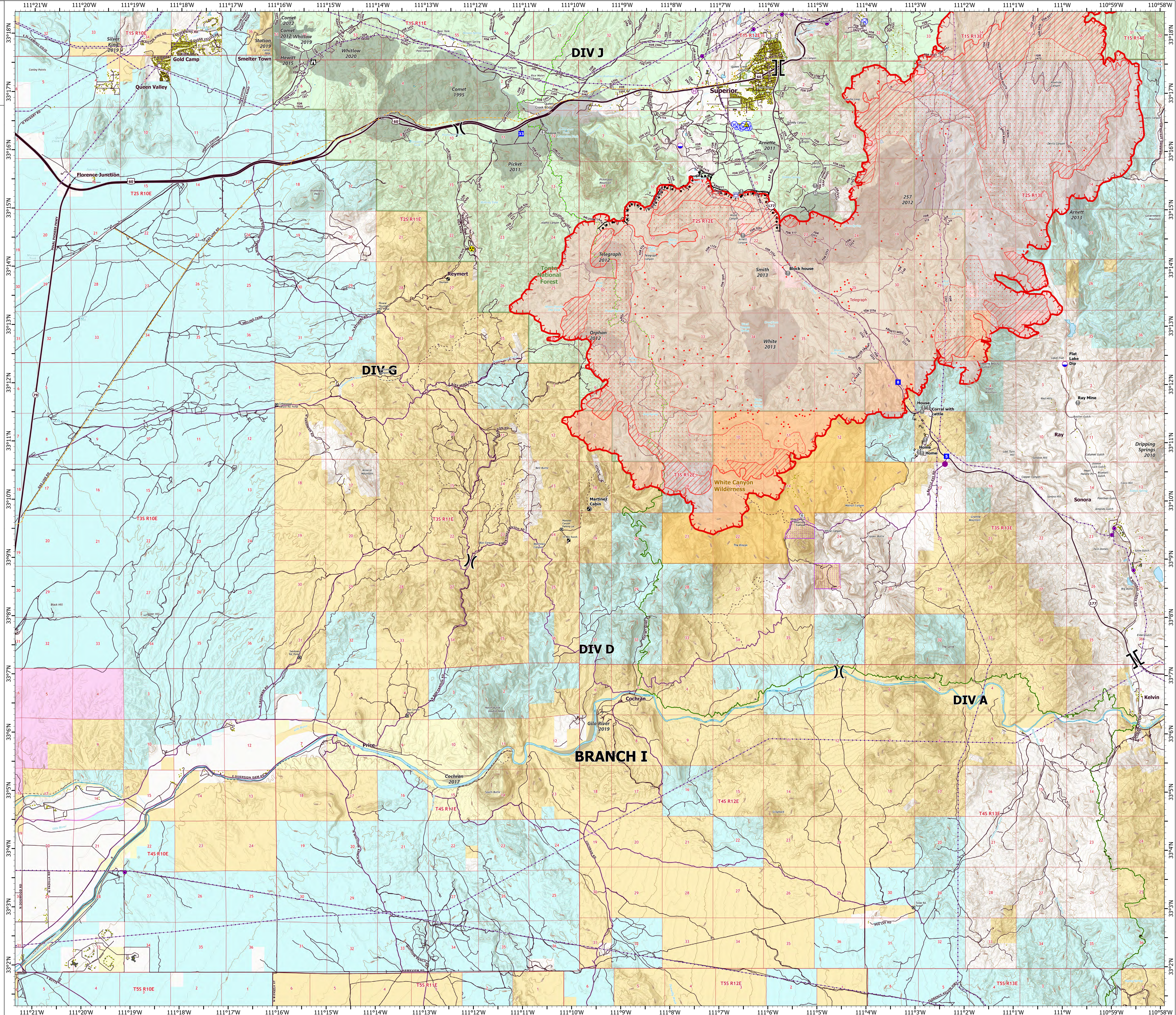
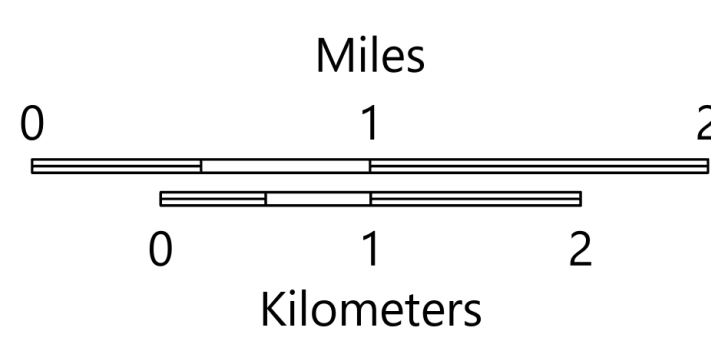
6/6/2021

41,109 acres at 6/6/2021 at 0910 hrs



Page 1 of 3

- Structure
- Substations
- Trailhead
- BLM Planned Portal Sites
- Point of Interest
- Trailhead
- Dip Site
- Helispot
- Helibase
- ⌘ Division Break
- ⌘ Branch Break
- Drop Point
- Lookout
- Value at Risk
- Gate
- Safety Zone
- Hazard
- Water Source
- Water Tank
- IR Isolated Heat Source
- Completed Burnout
- Completed Hand Line
- Access or Improved Road
- Fire Edge
- IR Heat Perimeter
- IR Intense Heat
- IR Scattered Heat
- Wildfire Daily Fire Perimeter
- Highway or Major Connecting Road
- Local Connecting Road
- Local Road
- Tonto National Forest Roads
- Tonto National Forest Trails
- Road
- Trail
- Arizona Trail
- Middle Gila Access Route
- Transmission Lines
- Oil and Natural Gas Pipelines
- Structure
- USFS Boundary
- BLM Area of Critical Environmental Concern
- Wilderness Area Boundary
- Federal Land within Wilderness Area
- Township/Range
- Section
- Fire History
- BLM
- BR
- County
- Military
- Private
- State
- USFS



OPERATIONS

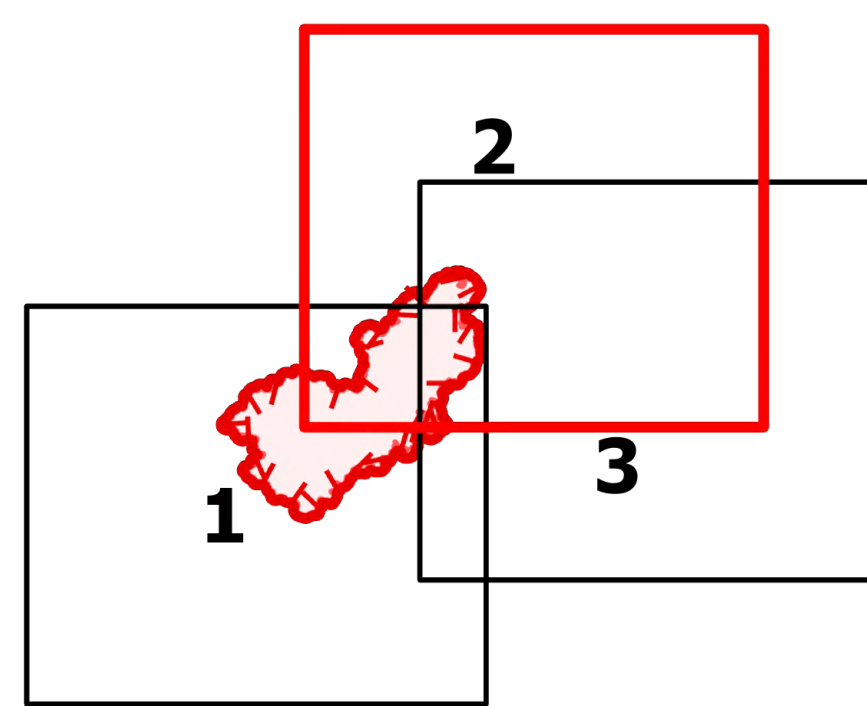
Branch II

Telegraph

AZ-TNF-1255

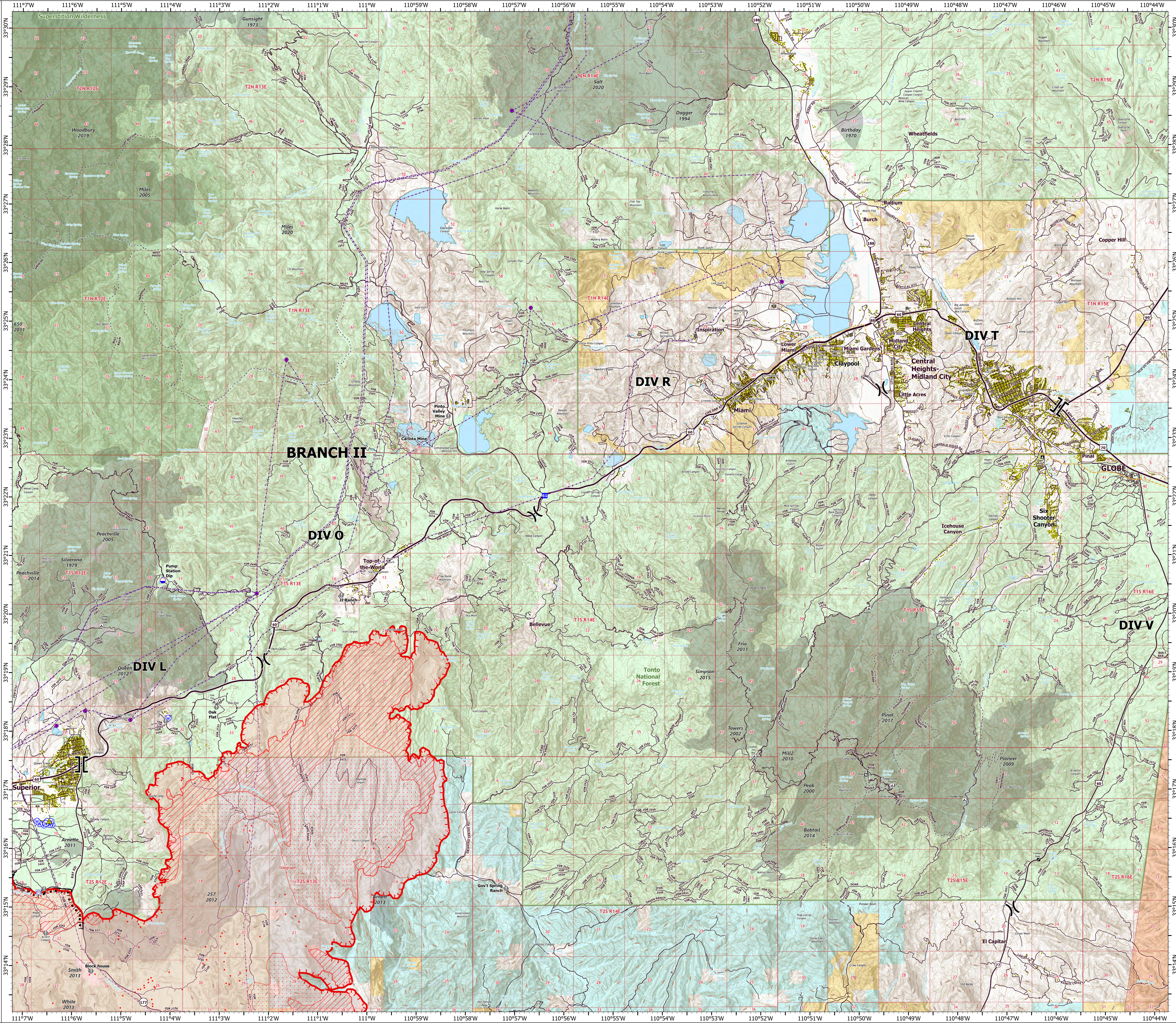
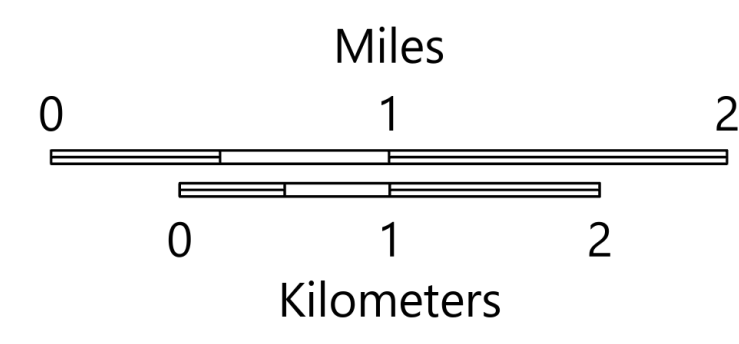
6/6/2021

41,109 acres at 6/6/2021 at 0910 hrs



Page 2 of 3

- Structure
- Substations
- Campground
- District Office
- Recreation Residence
- Trailhead
- Other
- Dip Site
-)(Division Break
- II Branch Break
- Drop Point
- Value at Risk
- Gate
- ▲ Safety Zone
- Water Source
- Water Tank
- IR Isolated Heat Source
- Completed Burnout
- Access or Improved Road
- Fire Edge
- IR Heat Perimeter
- IR Intense Heat
- IR Scattered Heat
- Wildfire Daily Fire Perimeter
- Highway or Major Connecting Road
- Local Connecting Road
- Local Road
- Tonto National Forest Roads
- Tonto National Forest Trails
- Road
- Transmission Lines
- Oil and Natural Gas Pipelines
- Structure
- USFS Boundary
- Township/Range
- Section
- Fire History
- USFS Wilderness Area
- BLM
- Indian Lands
- Private
- State
- USFS



OPERATIONS

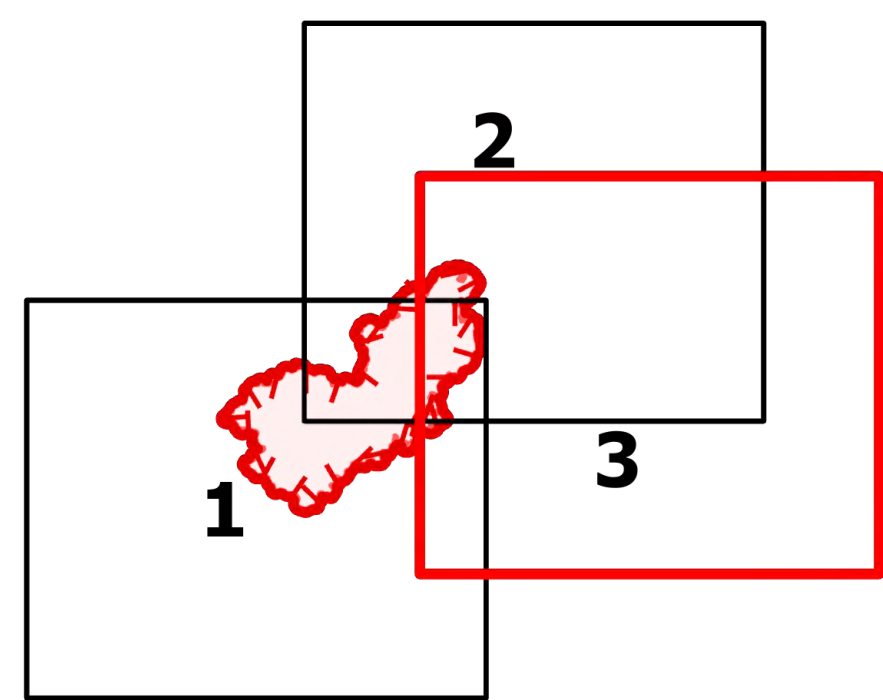
Branch III

Telegraph

AZ-TNF-1255

6/6/2021

41,109 acres at 6/6/2021 at 0910 hrs



Page 3 of 3

- Structure
- Substations
- Campground
- District Office
- Recreation Residence
- Trailhead
- Other
- Trailhead
- Dip Site
- Division Break
- Branch Break
- Drop Point
- Value at Risk
- Gate
- IR Isolated Heat Source
- Fire Edge
- IR Heat Perimeter
- IR Intense Heat
- IR Scattered Heat
- Wildfire Daily Fire Perimeter
- Highway or Major Connecting Road
- Local Connecting Road
- Local Road
- Tonto National Forest Roads
- Tonto National Forest Trails
- Road
- Arizona Trail
- Transmission Lines
- Oil and Natural Gas Pipelines
- Structure
- USFS Boundary
- BLM Area of Critical Environmental Concern
- Wilderness Area Boundary
- Federal Land within Wilderness Area
- Township/Range
- Section
- Fire History
- BLM
- Indian Lands
- Private
- State
- USFS

