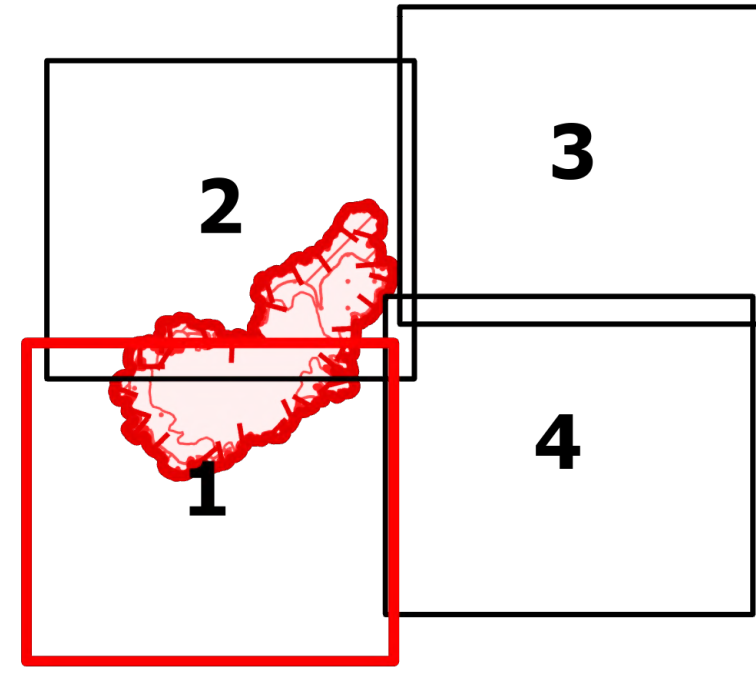


# OPERATIONS

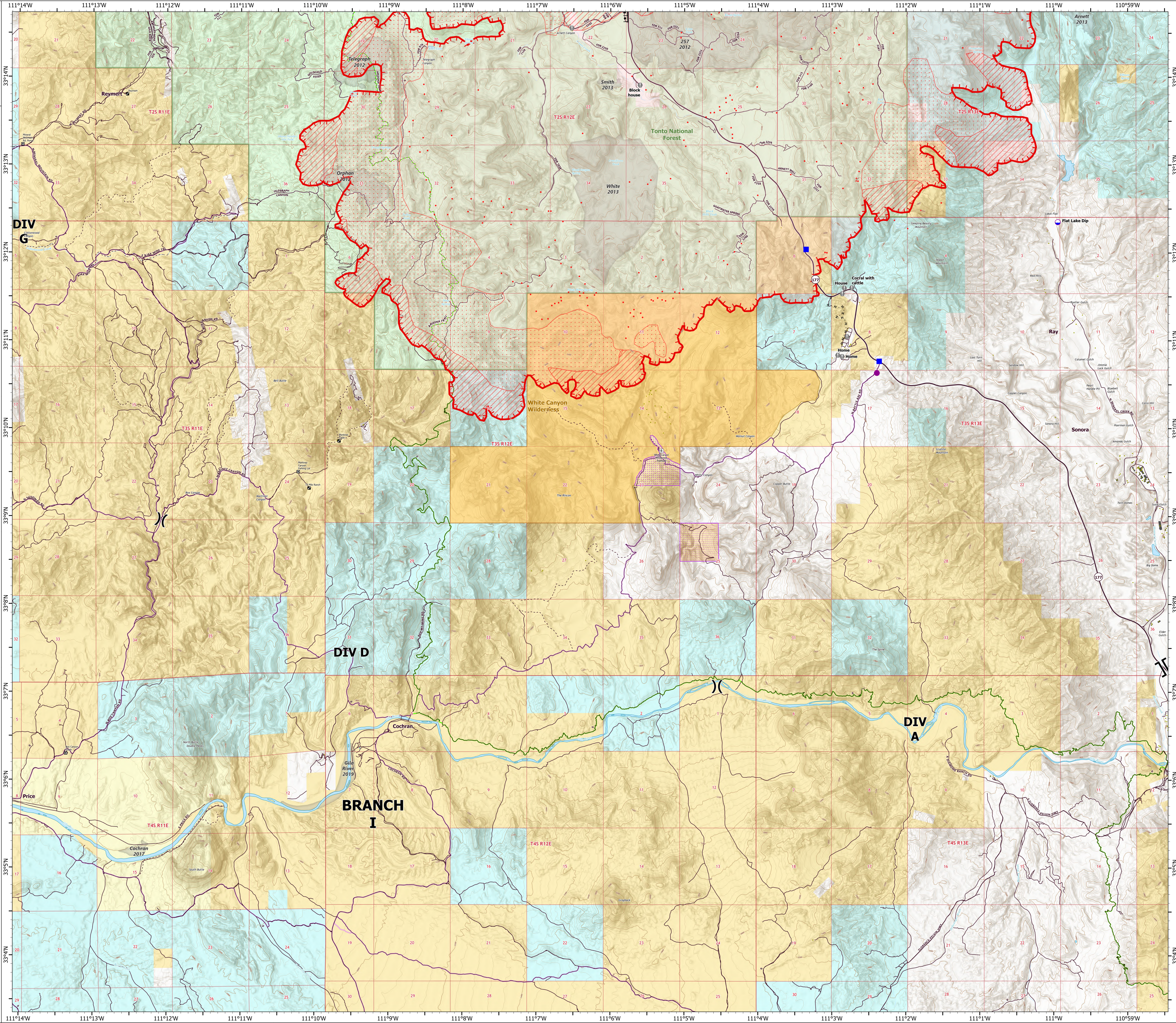
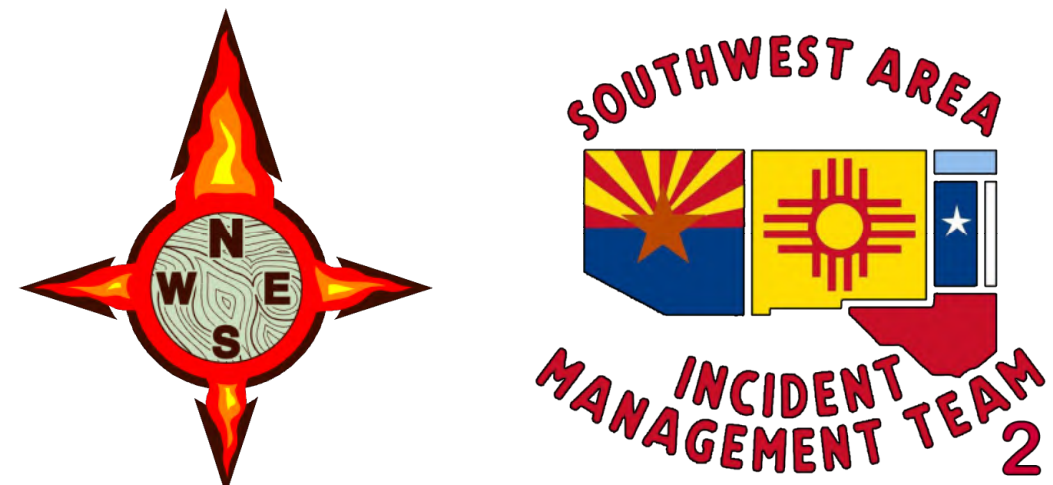
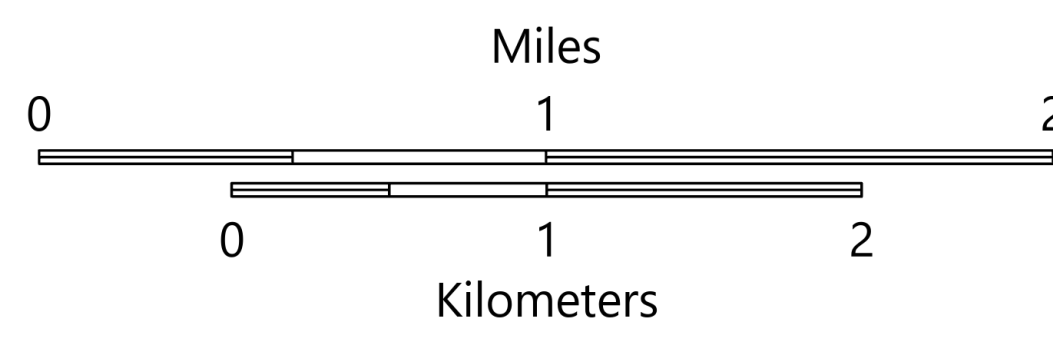
Telegraph  
AZ-TNF-1255  
6/6/2021

34,463 acres at 6/6/2021 at 0007 hrs



Page 1 of 4

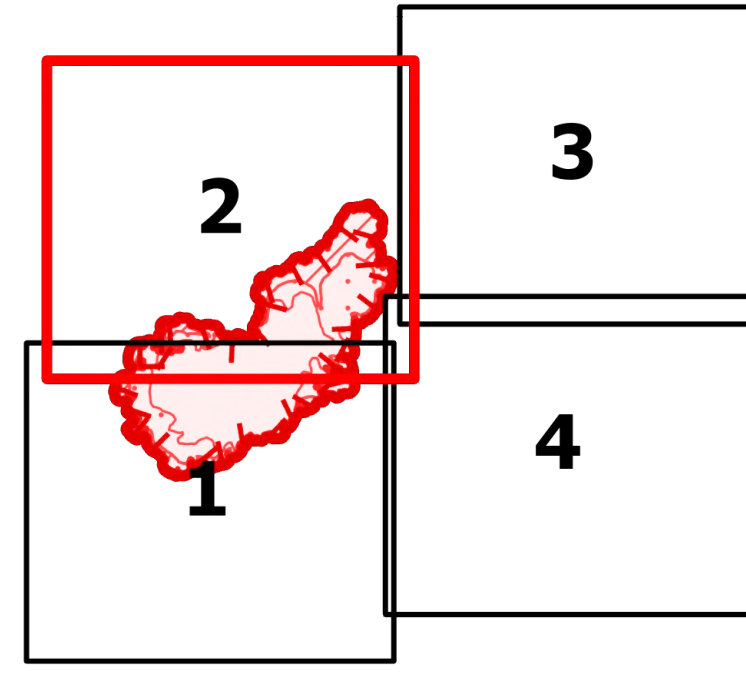
- Dip Site
- Helispot
- Division Break
- Branch Break
- Drop Point
- Value at Risk
- IR Isolated Heat Source
- Completed Burnout
- Completed Hand Line
- Fire Edge
- IR Heat Perimeter
- IR Intense Heat
- IR Scattered Heat
- Wildfire Daily Fire Perimeter
- Local Connecting Road
- Local Road
- Tonto National Forest Roads
- Tonto National Forest Trails
- Road
- Trail
- Arizona Trail
- Middle Gila Access Route
- Structure
- Structure
- USFS Boundary
- BLM Area of Critical Environmental Concern
- Wilderness Area Boundary
- Federal Land within Wilderness Area
- Township/Range
- Section
- Fire History
- BLM
- BR
- Private
- State
- USFS
- Point of Interest
- Trailhead
- BLM Planned Portal Sites



# OPERATIONS

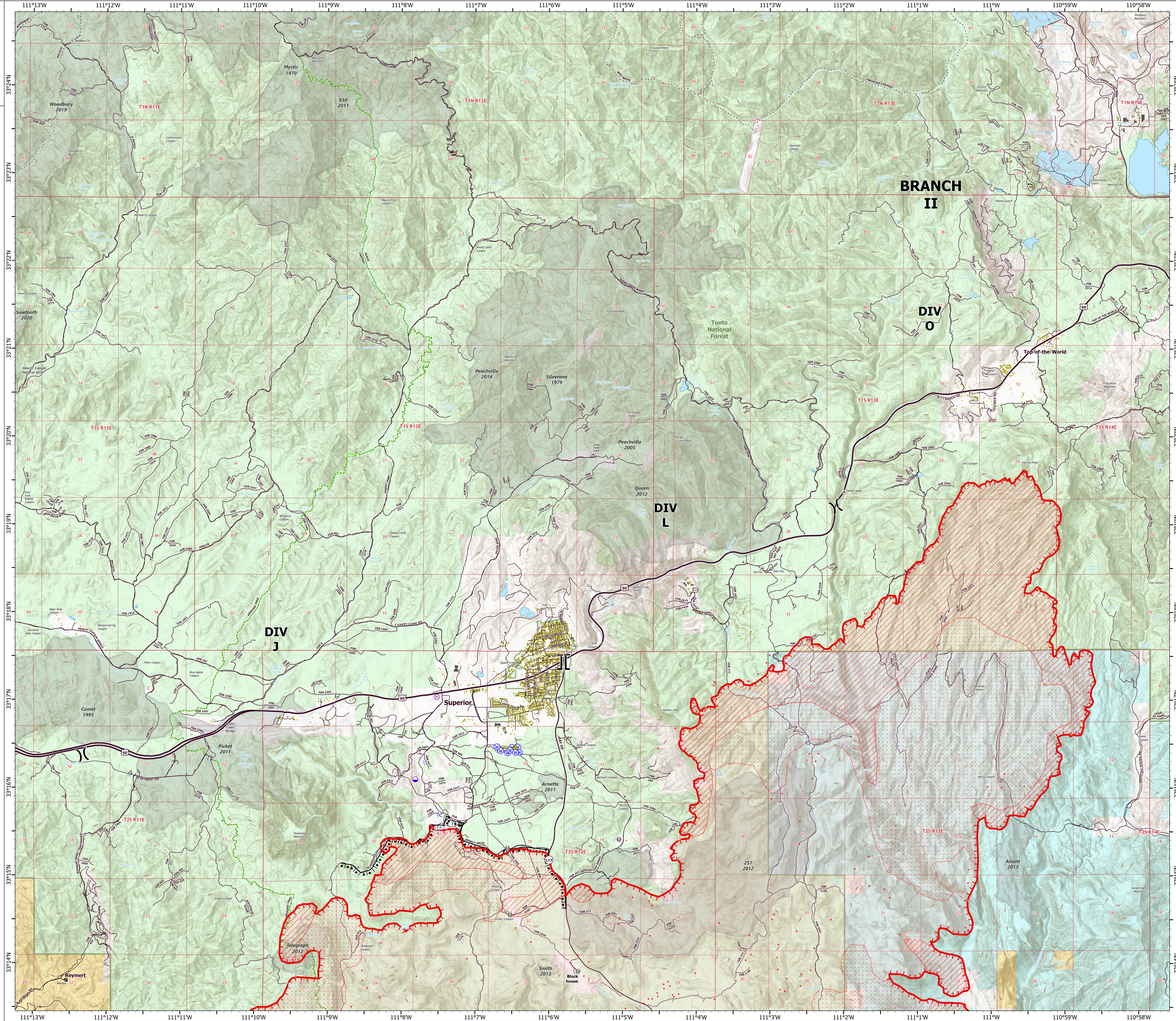
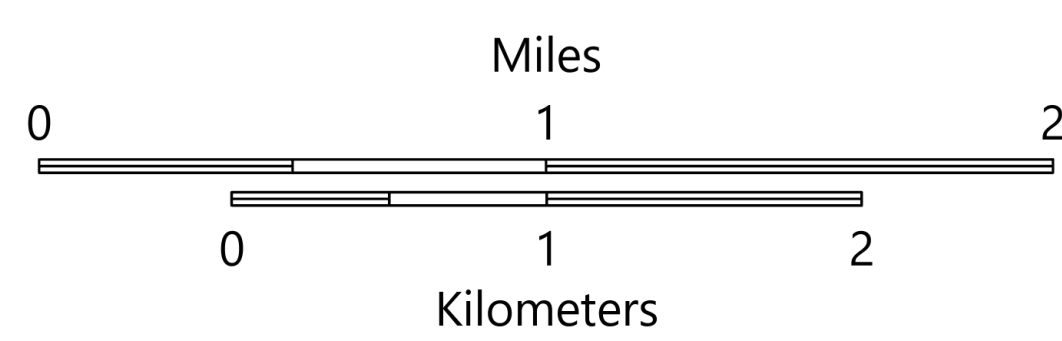
Telegraph  
AZ-TNF-1255  
6/6/2021

34,463 acres at 6/6/2021 at 0007 hrs



Page 2 of 4

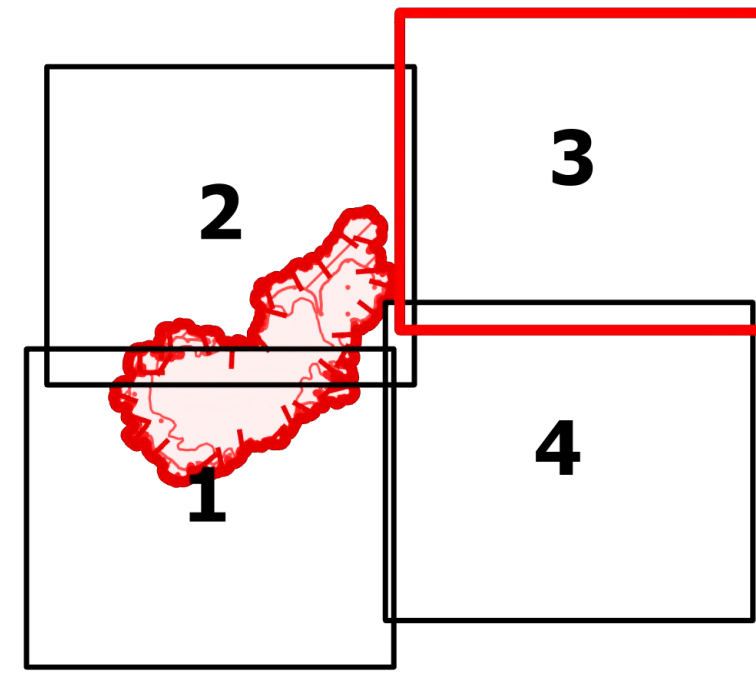
- Dip Site
- Helibase
- Division Break
- Branch Break
- Value at Risk
- Gate
- Safety Zone
- Water Source
- IR Isolated Heat Source
- Completed Burnout
- Fire Edge
- IR Heat Perimeter
- IR Intense Heat
- IR Scattered Heat
- Wildfire Daily Fire Perimeter
- Highway or Major Connecting Road
- Local Connecting Road
- Local Road
- Tonto National Forest Roads
- Tonto National Forest Trails
- Road
- Trail
- Arizona Trail
- Structure
- Structure
- USFS Boundary
- Township/Range
- Section
- Fire History
- BLM
- Private
- State
- USFS
- Point of Interest
- Campground
- Trailhead



# OPERATIONS

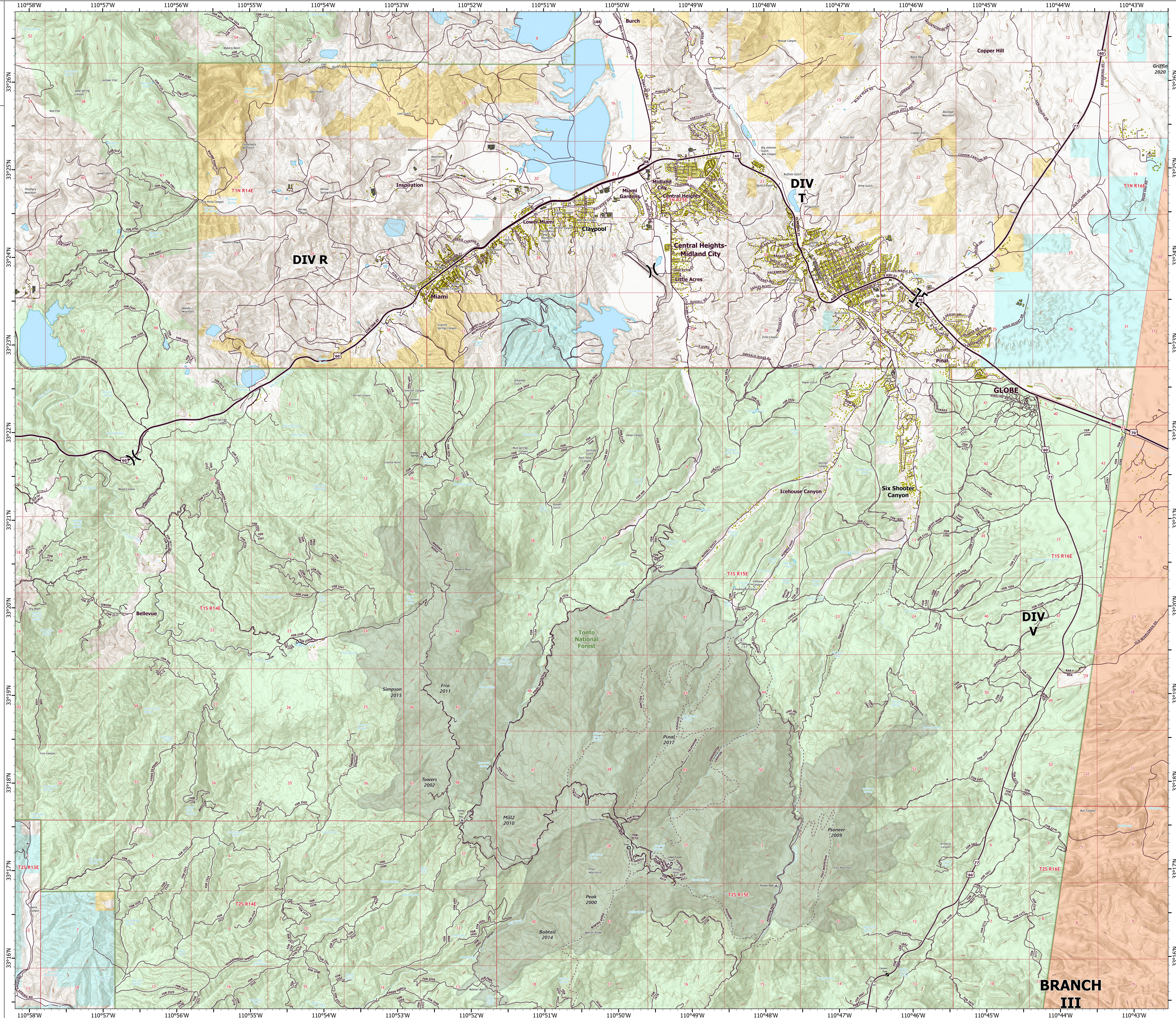
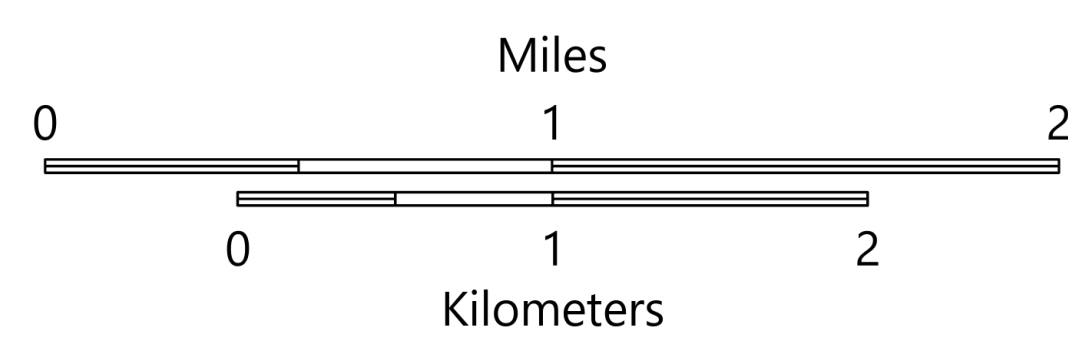
Telegraph  
AZ-TNF-1255  
6/6/2021

34,463 acres at 6/6/2021 at 0007 hrs



Page 3 of 4

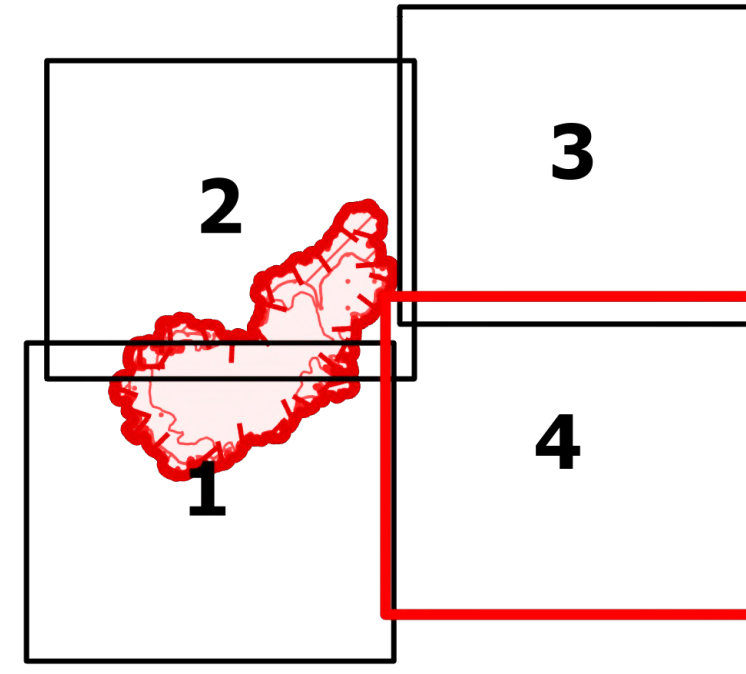
- (X) Division Break
- (|) Branch Break
- Highway or Major Connecting Road
- Local Connecting Road
- Local Road
- Tonto National Forest Roads
- Tonto National Forest Trails
- Road
- Structure
- Structure
- ▭ USFS Boundary
- ▭ Township/Range
- ▭ Section
- ▭ Fire History
- ▭ BLM
- ▭ Indian Lands
- ▭ Private
- ▭ State
- ▭ USFS
- ▭ Campground
- ▭ District Office
- ▭ Recreation Residence
- ▭ Trailhead
- ▭ Other



# OPERATIONS

Telegraph  
AZ-TNF-1255  
6/6/2021

34,463 acres at 6/6/2021 at 0007 hrs



Page 4 of 4

- ( ) Division Break
- || Branch Break
- Local Connecting Road
- Local Road
- Tonto National Forest Roads
- Tonto National Forest Trails
- Road
- Trail
- Arizona Trail
- Structure
- Structure
- USFS Boundary
- ▨ BLM Area of Critical Environmental Concern
- ▭ Township/Range
- ▭ Section
- Fire History
- BLM
- Indian Lands
- Private
- State
- USFS
- ⊕ Trailhead
- Other

