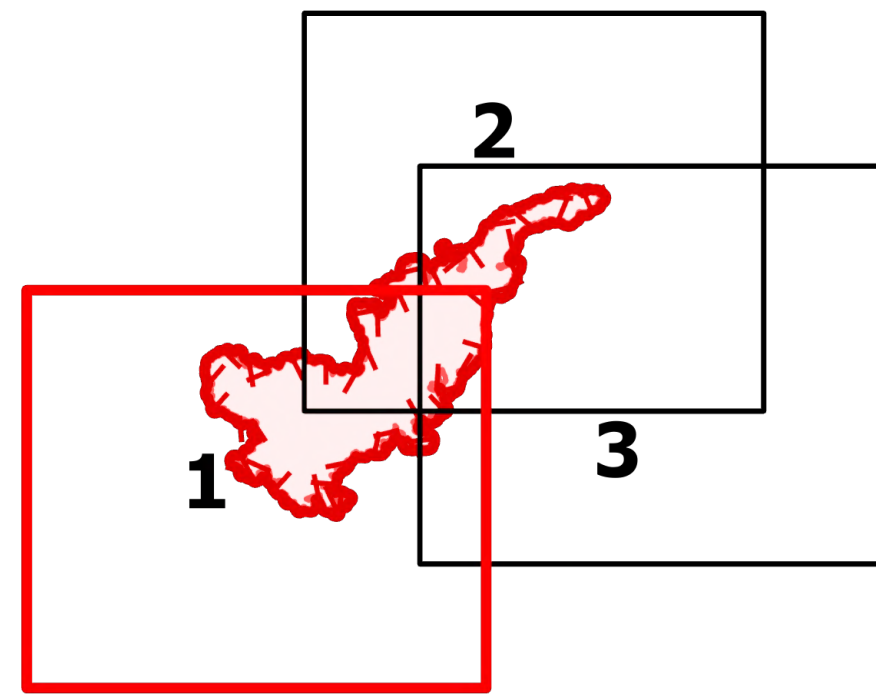


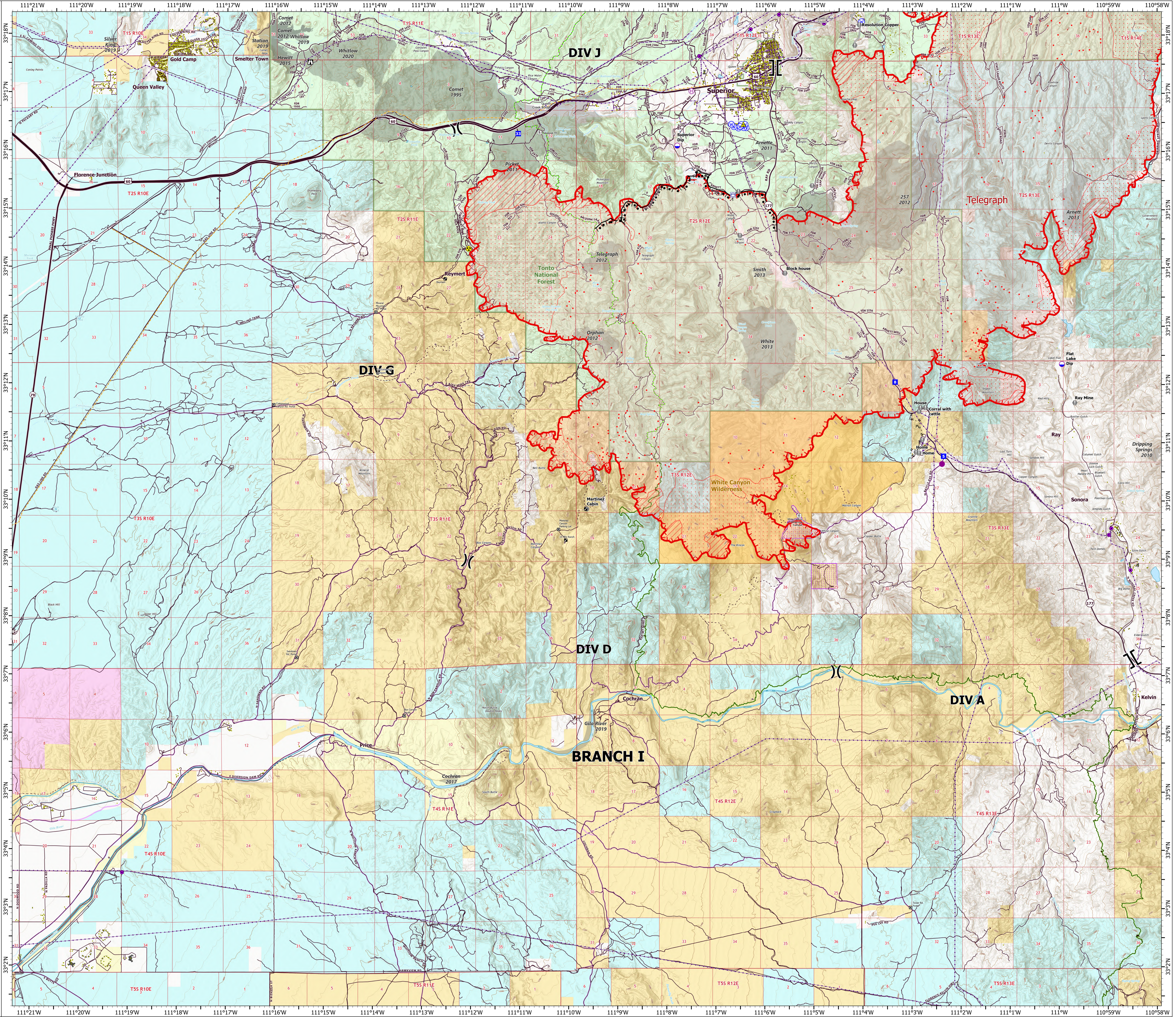
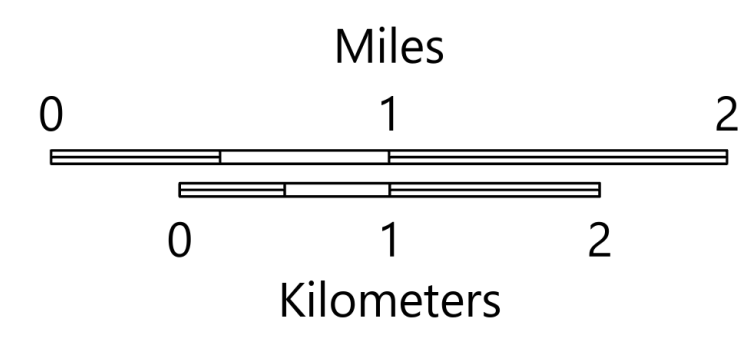
# OPERATIONS

Branch I  
Telegraph  
AZ-TNF-1255  
6/7/2021  
56,626 acres at 6/6/2021 at 2147 hrs



Page 1 of 3

- Structure
- Substations
- ⊠ Trailhead
- ⊠ BLM Planned Portal Sites
- ⊠ Point of Interest
- ⊠ Trailhead
- ⊠ Dip Site
- ⊠ Helispot
- ⊠ Helibase
- ⊠ Division Break
- ⊠ Branch Break
- ⊠ Drop Point
- ⊠ Lookout
- ⊠ Value at Risk
- ⊠ Gate
- ⊠ Safety Zone
- ⊠ Hazard
- ⊠ Water Source
- ⊠ Water Tank
- ⊠ IR Isolated Heat Source
- ⊠ Completed Burnout
- ⊠ Completed Hand Line
- ⊠ Access or Improved Road
- ⊠ Fire Edge
- ⊠ IR Heat Perimeter
- ⊠ IR Intense Heat
- ⊠ IR Scattered Heat
- ⊠ Wildfire Daily Fire Perimeter
- ⊠ Highway or Major Connecting Road
- ⊠ Local Connecting Road
- ⊠ Local Road
- ⊠ Tonto National Forest Roads
- ⊠ Tonto National Forest Trails
- ⊠ Road
- ⊠ Trail
- ⊠ Arizona Trail
- ⊠ Middle Gila Access Route
- ⊠ Transmission Lines
- ⊠ APS Distribution Overhead Infrastructure
- ⊠ Oil and Natural Gas Pipelines
- ⊠ Structure
- ⊠ USFS Boundary
- ⊠ BLM Area of Critical Environmental Concern
- ⊠ Wilderness Area Boundary
- ⊠ Federal Land within Wilderness Area
- ⊠ Township/Range
- ⊠ Section
- ⊠ Fire History
- ⊠ BLM
- ⊠ BR
- ⊠ County
- ⊠ Military
- ⊠ Private
- ⊠ State
- ⊠ USFS



# OPERATIONS

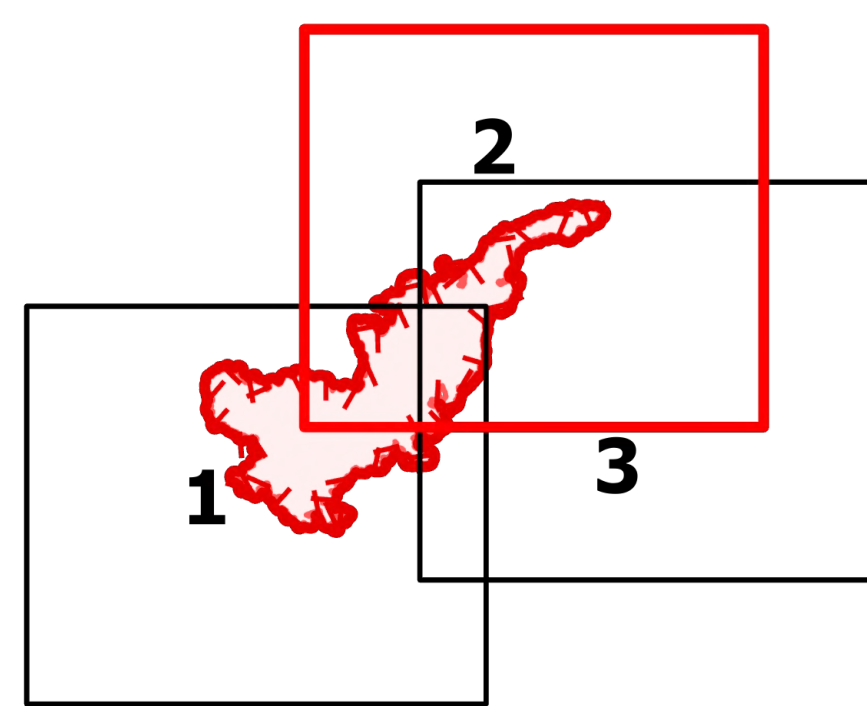
Branch II

Telegraph

AZ-TNF-1255

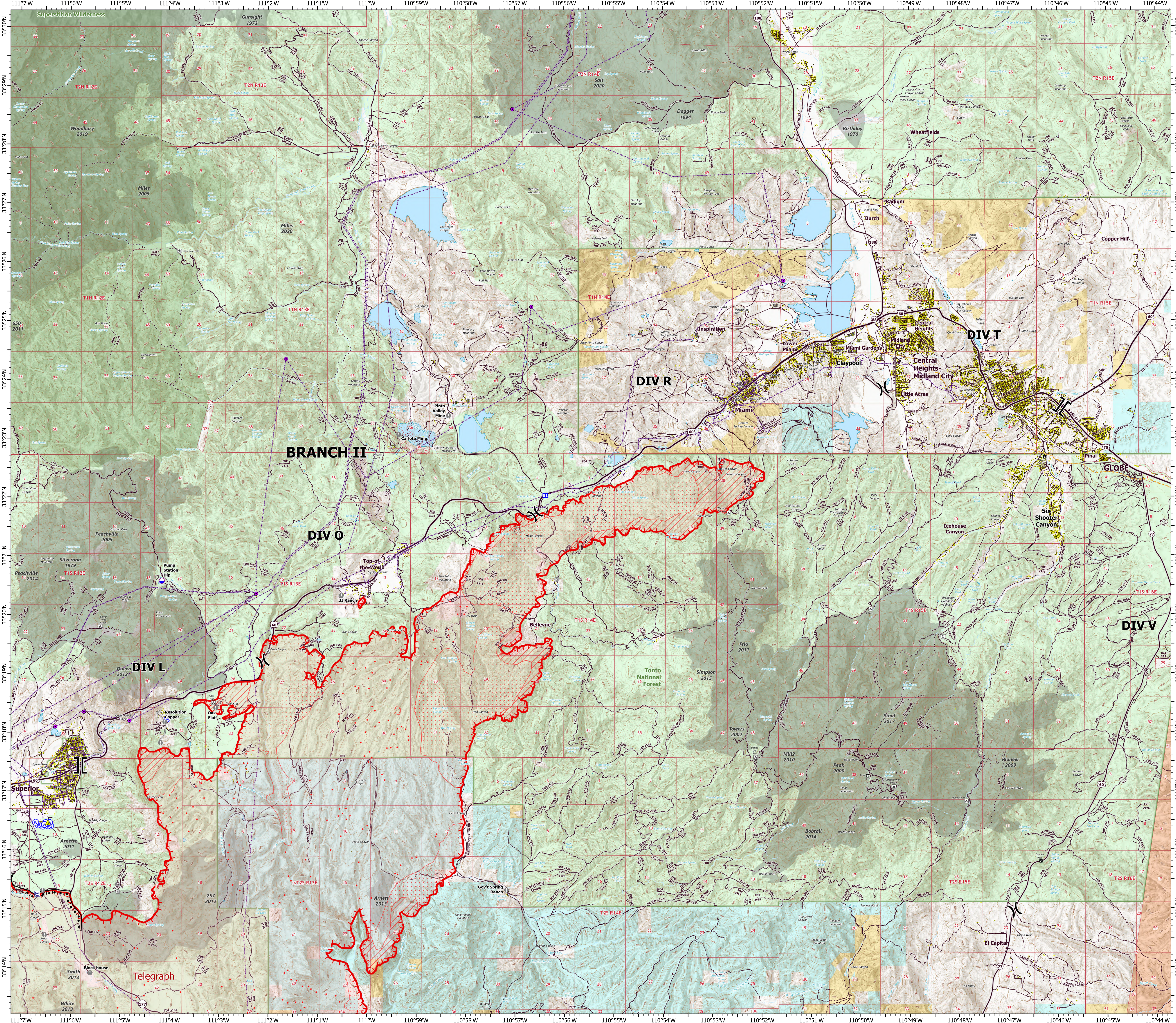
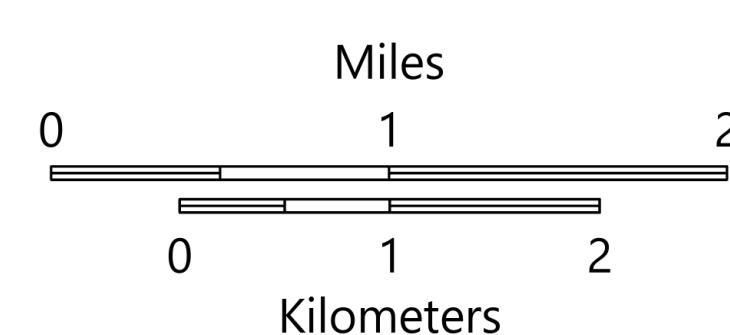
6/7/2021

56,626 acres at 6/6/2021 at 2147 hrs



Page 2 of 3

- Structure
- Substations
- ▣ Campground
- ▣ District Office
- ▣ Recreation Residence
- ▣ Trailhead
- Other
- Dip Site
- ⌋ Division Break
- ⌋ Branch Break
- Drop Point
- Value at Risk
- Gate
- ▲ Safety Zone
- Water Source
- Water Tank
- IR Isolated Heat Source
- ▬ Completed Burnout
- ▬ Access or Improved Road
- ▬ Fire Edge
- ▬ IR Heat Perimeter
- ▬ IR Intense Heat
- ▬ IR Scattered Heat
- ▬ Wildfire Daily Fire Perimeter
- ▬ Highway or Major Connecting Road
- ▬ Local Connecting Road
- ▬ Local Road
- ▬ Tonto National Forest Roads
- ▬ Tonto National Forest Trails
- ▬ Road
- ▬ Transmission Lines
- ▬ APS Distribution Overhead Infrastructure
- ▬ Oil and Natural Gas Pipelines
- ▬ Structure
- ▬ USFS Boundary
- ▬ Township/Range
- ▬ Section
- ▬ Fire History
- ▬ USFS Wilderness Area
- ▬ BLM
- ▬ Indian Lands
- ▬ Private
- ▬ State
- ▬ USFS



# OPERATIONS

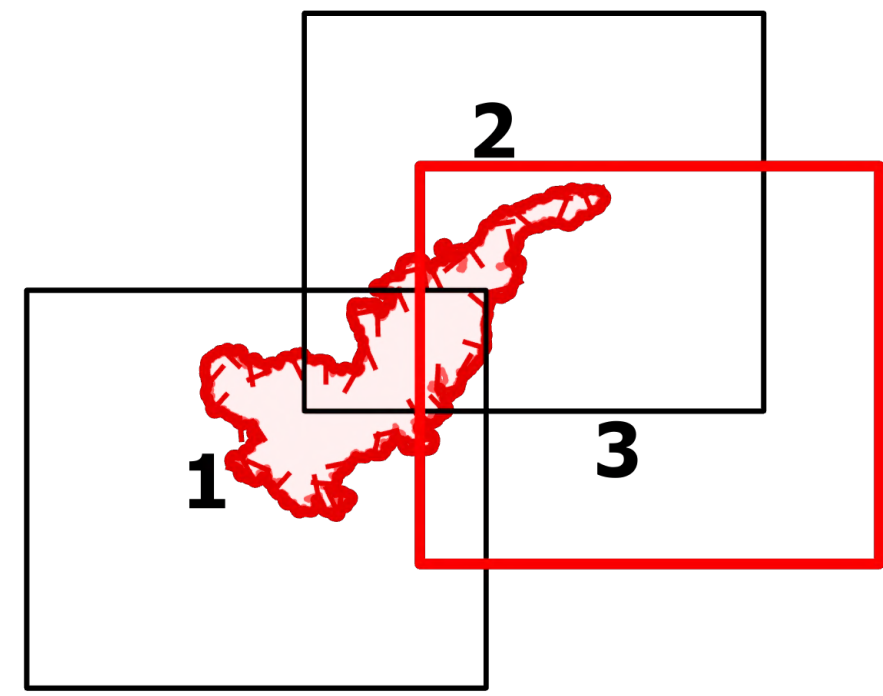
Branch III

Telegraph

AZ-TNF-1255

6/7/2021

56,626 acres at 6/6/2021 at 2147 hrs



Page 3 of 3

- Structure
- Substations
- ▣ Campground
- ▣ District Office
- ▣ Recreation Residence
- ▣ Trailhead
- ▣ Other
- ▣ Trailhead
- Dip Site
- ⌋ Division Break
- ⌋ Branch Break
- ▣ Drop Point
- Value at Risk
- Gate
- IR Isolated Heat Source
- ▣ Fire Edge
- ▣ Contained Line
- ▣ IR Heat Perimeter
- ▣ IR Intense Heat
- ▣ IR Scattered Heat
- ▣ Wildfire Daily Fire Perimeter
- ▣ Highway or Major Connecting Road
- ▣ Local Connecting Road
- ▣ Local Road
- ▣ Tonto National Forest Roads
- ▣ Tonto National Forest Trails
- ▣ Road
- ▣ Arizona Trail
- ▣ Transmission Lines
- ▣ APS Distribution Overhead Infrastructure
- ▣ Oil and Natural Gas Pipelines
- ▣ Structure
- ▣ USFS Boundary
- ▣ BLM Area of Critical Environmental Concern
- ▣ Wilderness Area Boundary
- ▣ Federal Land within Wilderness Area
- ▣ Township/Range
- ▣ Section
- ▣ Fire History
- ▣ BLM
- ▣ Indian Lands
- ▣ Private
- ▣ State
- ▣ USFS

