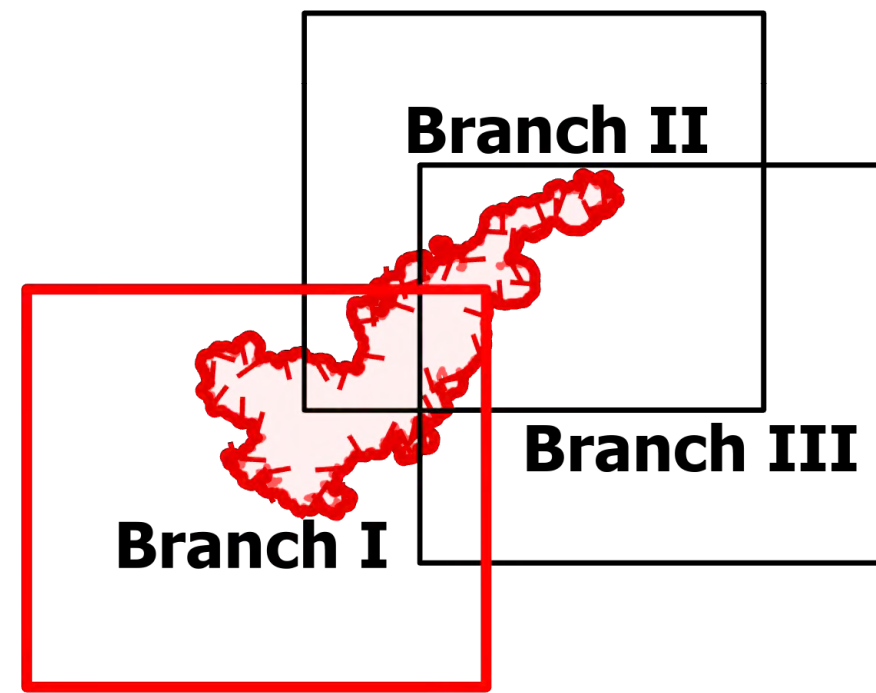


OPERATIONS

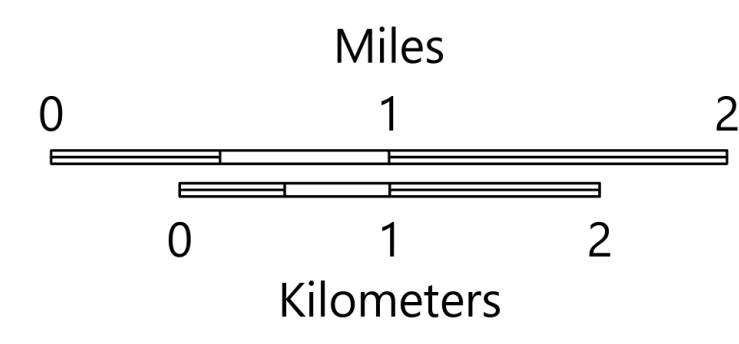
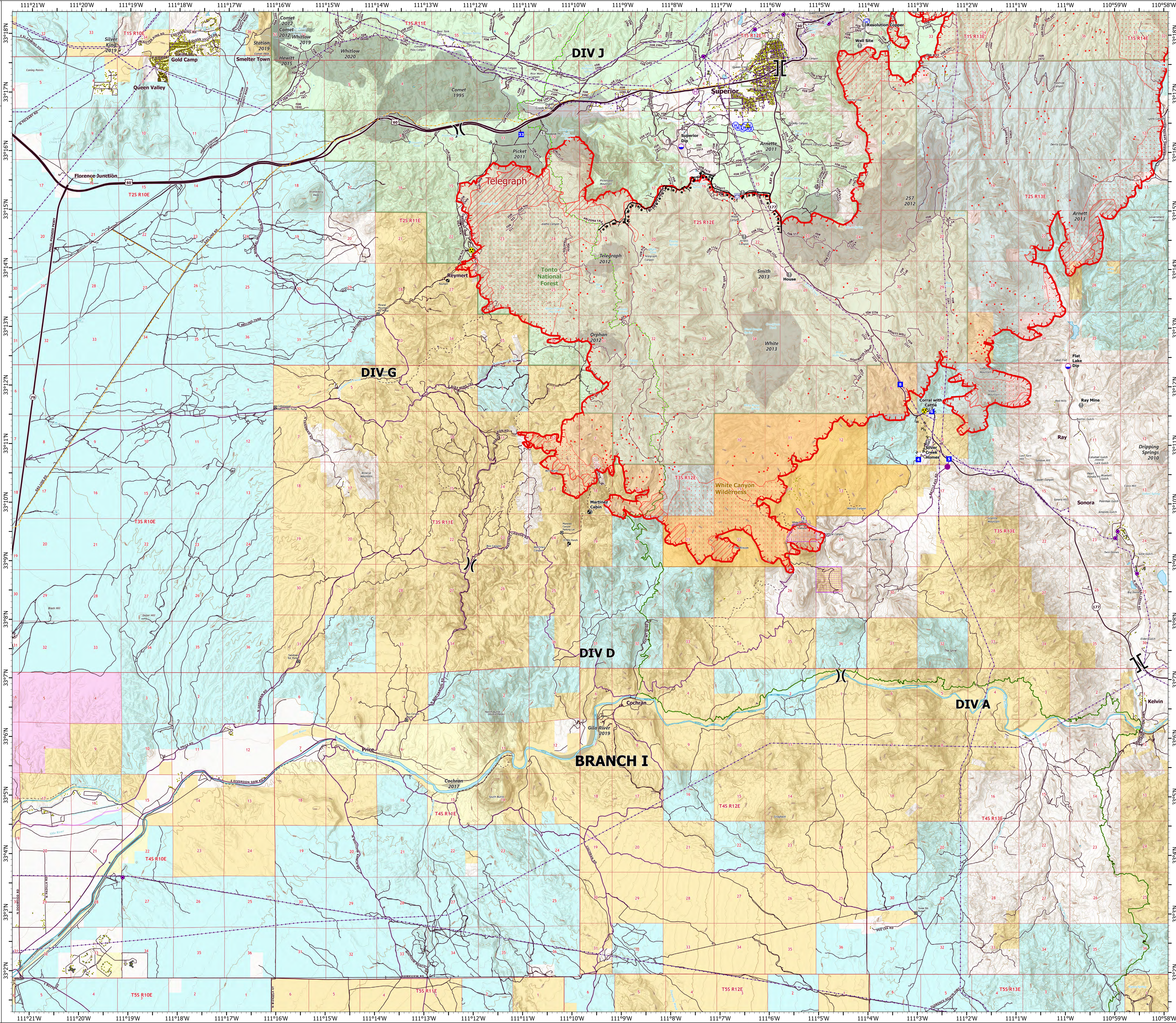
Telegraph
AZ-TNF-1255
6/7/2021

61,211 acres at 6/7/2021 at 1013 hrs



Branch I

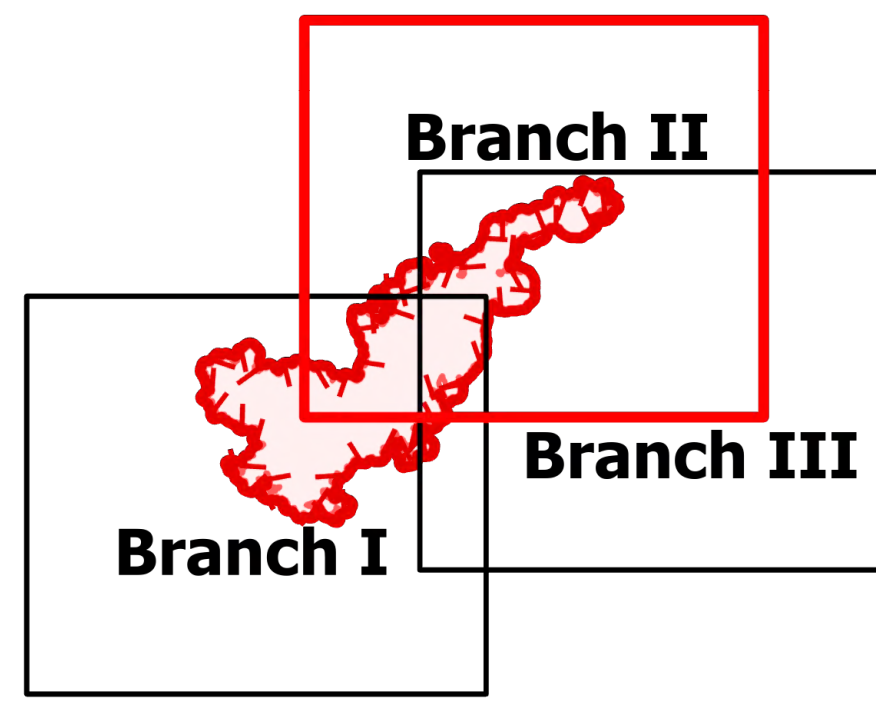
- Structure
- Substations
- ⊗ Trailhead
- ⊗ BLM Planned Portal Sites
- ⊗ Point of Interest
- ⊗ Trailhead
- ⊗ Dip Site
- ⊗ Helispot
- ⊗ Helibase
- ⊗ Division Break
- ⊗ Branch Break
- ⊗ Drop Point
- ⊗ Value at Risk
- ⊗ Gate
- ⊗ Safety Zone
- ⊗ Hazard
- ⊗ Water Source
- ⊗ Water Tank
- ⊗ IR Isolated Heat Source
- ⊗ Completed Burnout
- MW Completed Fuel Break
- H-H Completed Hand Line
- Access or Improved Road
- Fire Edge
- IR Heat Perimeter
- IR Intense Heat
- IR Scattered Heat
- Wildfire Daily Fire Perimeter
- Highway or Major Connecting Road
- Local Connecting Road
- Local Road
- Tonto National Forest Roads
- Tonto National Forest Trails
- Road
- Trail
- Arizona Trail
- Middle Gila Access Route
- Transmission Lines
- APS Distribution Overhead Infrastructure
- Oil and Natural Gas Pipelines
- Structure
- USFS Boundary
- BLM Area of Critical Environmental Concern
- Wilderness Area Boundary
- Federal Land within Wilderness Area
- Township/Range
- Section
- Fire History
- BLM
- BR
- County
- Military
- Private
- State
- USFS



OPERATIONS

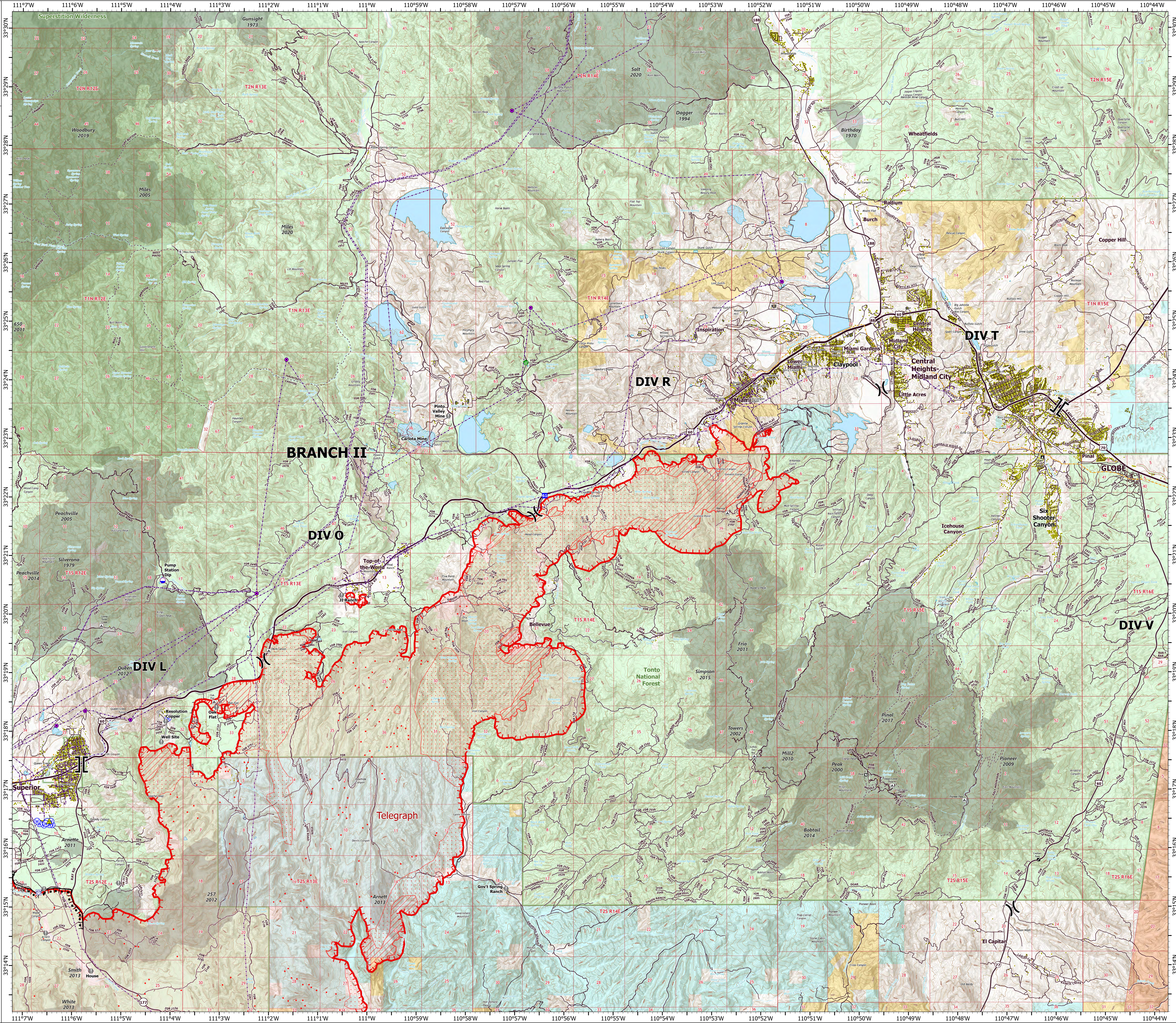
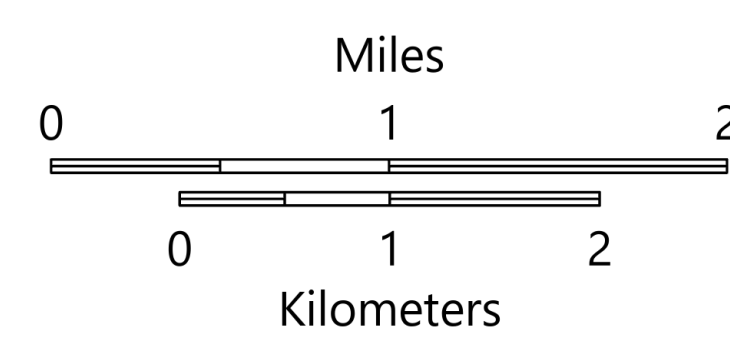
Telegraph
AZ-TNF-1255
6/7/2021

61,211 acres at 6/7/2021 at 1013 hrs



Branch II

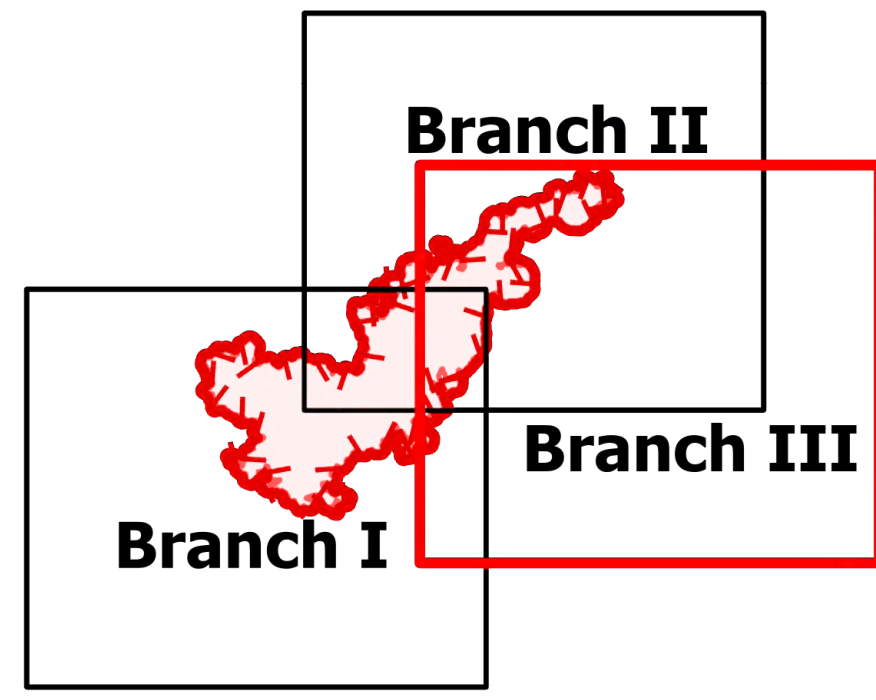
- Structure
- Substations
- Ⓜ Campground
- Ⓜ District Office
- Ⓜ Recreation Residence
- Ⓜ Trailhead
- Ⓜ Other
- Ⓜ Dip Site
- Ⓜ Division Break
- Ⓜ Branch Break
- Ⓜ Drop Point
- Ⓜ Value at Risk
- Ⓜ Gate
- Ⓜ Water Development or Draft Site
- Ⓜ Safety Zone
- Ⓜ Water Source
- Ⓜ Water Tank
- Ⓜ IR Isolated Heat Source
- Ⓜ Completed Burnout
- R · R Completed Road as Line
- Access or Improved Road
- Fire Edge
- IR Heat Perimeter
- IR Intense Heat
- IR Scattered Heat
- Wildfire Daily Fire Perimeter
- Highway or Major Connecting Road
- Local Connecting Road
- Local Road
- Tonto National Forest Roads
- Tonto National Forest Trails
- Road
- Transmission Lines
- APS Distribution Overhead Infrastructure
- Oil and Natural Gas Pipelines
- Structure
- USFS Boundary
- Township/Range
- Section
- Fire History
- USFS Wilderness Area
- BLM
- Indian Lands
- Private
- State
- USFS



OPERATIONS



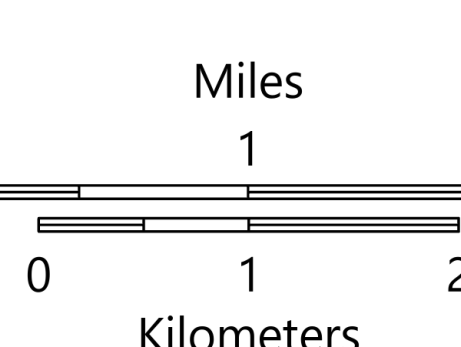

Telegraph
AZ-TNF-1255
6/7/2021

61,211 acres at 6/7/2021 at 1013 hrs



Branch III

- Structure
- Substations
- Campground
- District Office
- Recreation Residence
- Trailhead
- Other
- Trailhead
- Dip Site
- ⌋ Division Break
- ⌋ Branch Break
- Drop Point
- Value at Risk
- Gate
- IR Isolated Heat Source
- R - R Completed Road as Line
- Fire Edge
- Contained Line
- IR Heat Perimeter
- IR Intense Heat
- IR Scattered Heat
- Wildfire Daily Fire Perimeter
- Highway or Major Connecting Road
- Local Connecting Road
- Local Road
- Tonto National Forest Roads
- Tonto National Forest Trails
- Road
- Arizona Trail
- Transmission Lines
- APS Distribution Overhead Infrastructure
- Oil and Natural Gas Pipelines
- Structure
- USFS Boundary
- BLM Area of Critical Environmental Concern
- Wilderness Area Boundary
- Federal Land within Wilderness Area
- Township/Range
- Section
- Fire History
- BLM
- Indian Lands
- Private
- State
- USFS



1:36,000 - SWAINT2 - 6/7/2021 1531
Acres from GIS-FireWatch
North American 1983 Datum, LatLong Grid

