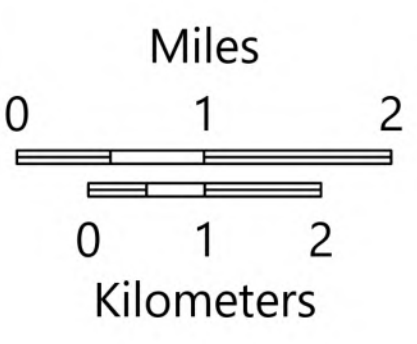
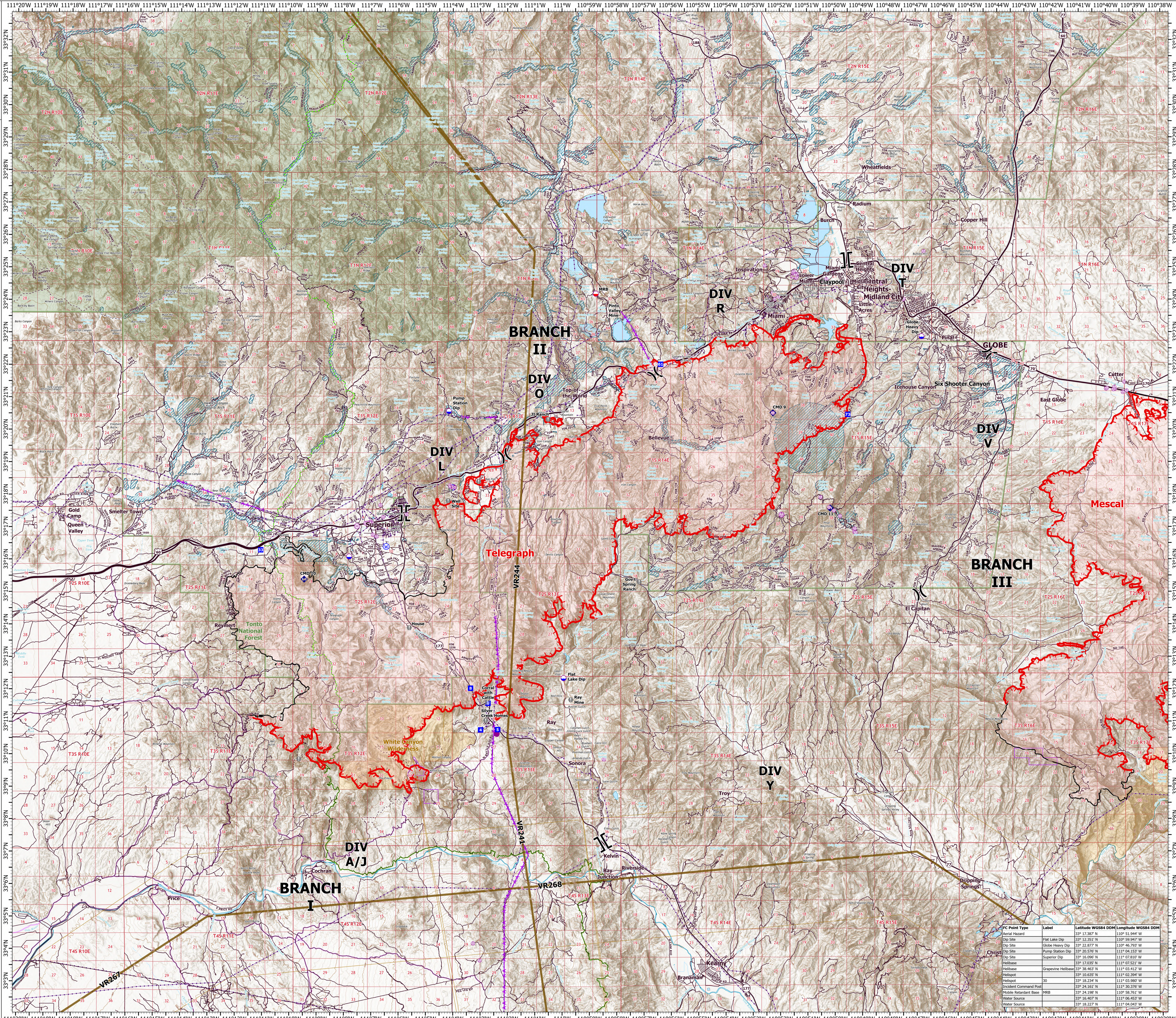


AVIATION HAZARDS

Telegraph
AZ-TNF-1255
6/9/2021

80,822 acres at 6/8/2021 at 2035 hrs

- Aerial Hazard
- Aerial Hazard
- Dip Site
- Mobile Retardant Base
- Helispot
- Helibase
- Division Break
- Branch Break
- Drop Point
- Value at Risk
- Repeater
- Water Source
- Aerial Hazard
- Fire Edge
- Contained Line
- MTR Visual Route
- MTR Visual Route Corridor
- Wildfire Daily Fire Perimeter
- Highway or Major Connecting Road
- Local Connecting Road
- Local Road
- Tonto National Forest Roads
- Tonto National Forest Trails
- Road
- Trail
- Arizona Trail
- Middle Gila Access Route
- Transmission Lines
- USFS Boundary
- BLM Area of Critical Environmental Concern
- Wilderness Area Boundary
- Federal Land within Wilderness Area
- Township/Range
- Section
- Retardant Avoidance
- USFS Wilderness Area



FC Point Type	Label	Latitude WGS84 DDM	Longitude WGS84 DDM
Aerial Hazard	Flat Lake Dip	33° 17.267' N	110° 51.944' W
Dip Site	Flat Lake Dip	33° 17.267' N	110° 50.942' W
Dip Site	Globe Heavy Dip	33° 22.877' N	110° 04.793' W
Dip Site	Pump Station Dip	33° 20.576' N	111° 04.153' W
Dip Site	Superior Dip	33° 16.096' N	111° 07.810' W
Helibase	Superior	33° 17.035' N	111° 07.523' W
Helibase	Grapvine Helibase	33° 38.463' N	111° 03.412' W
Helispot		33° 10.635' N	111° 02.394' W
Helispot	30	33° 18.254' N	111° 03.980' W
Product Command Post		33° 24.613' N	111° 03.370' W
Mobile Retardant Base	MRB	33° 24.198' N	110° 58.761' W
Water Source		33° 16.407' N	111° 06.453' W
Water Source		33° 18.227' N	111° 04.043' W