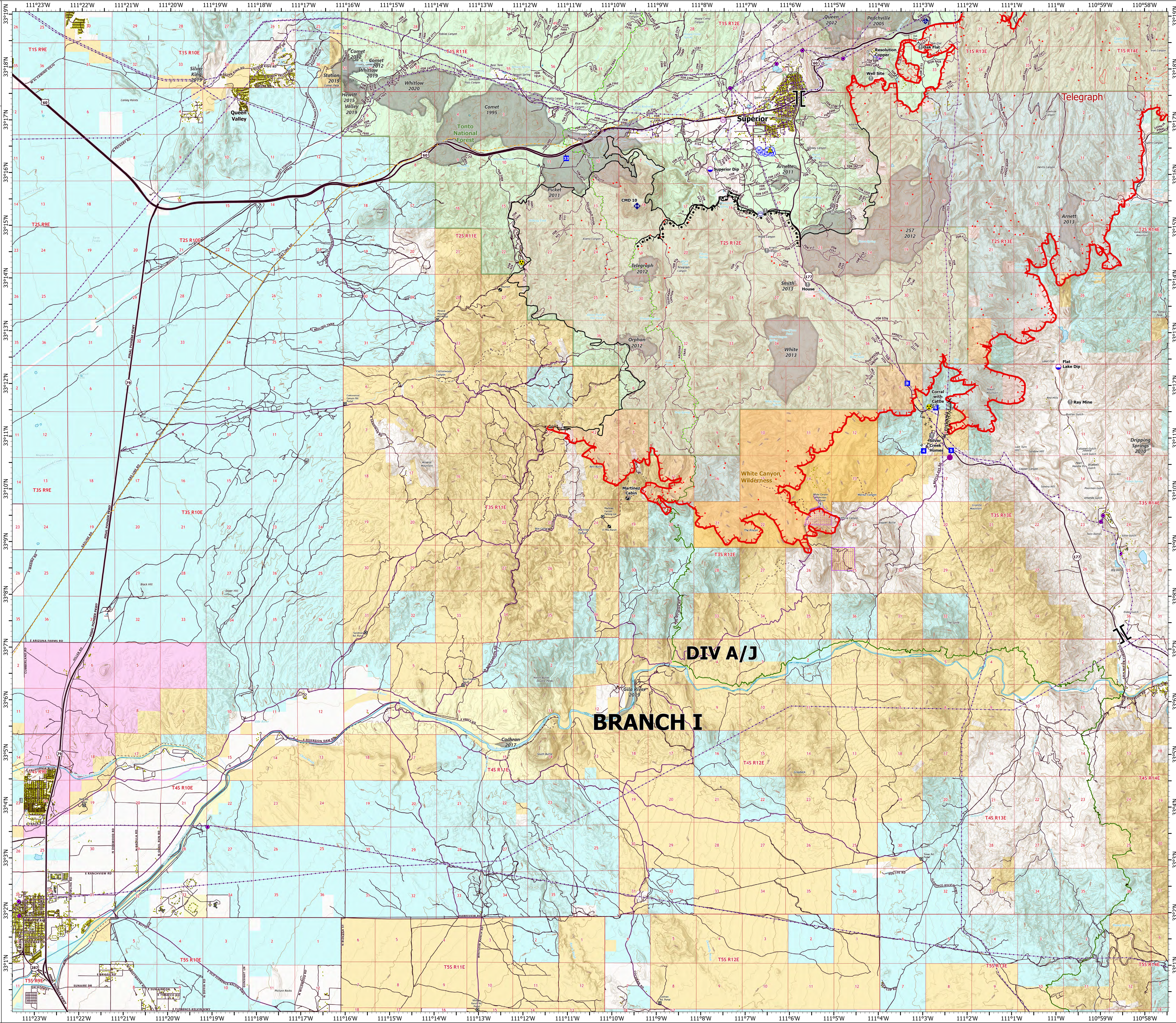
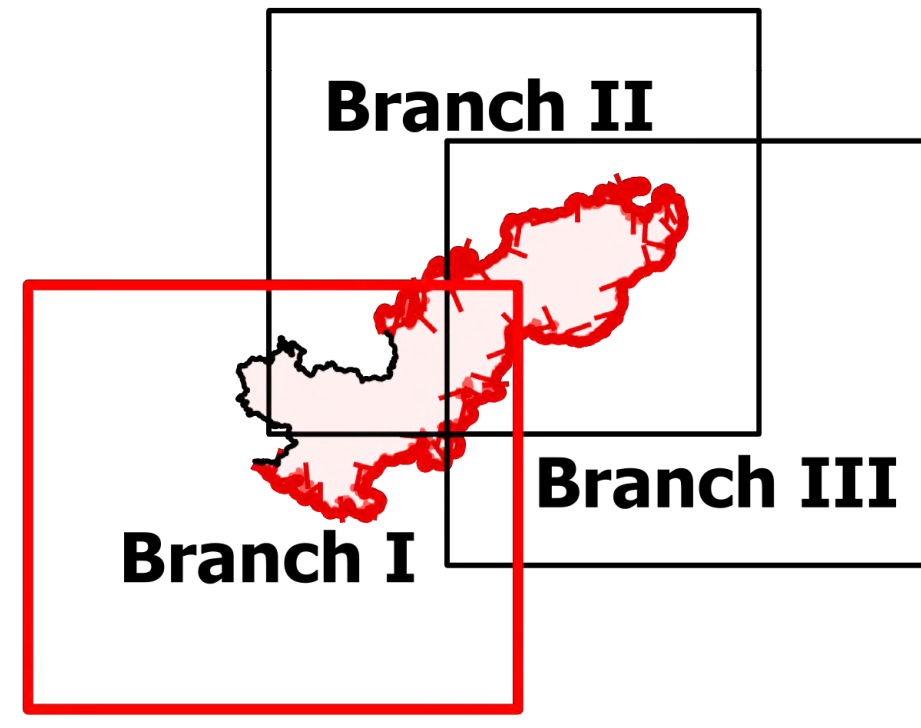
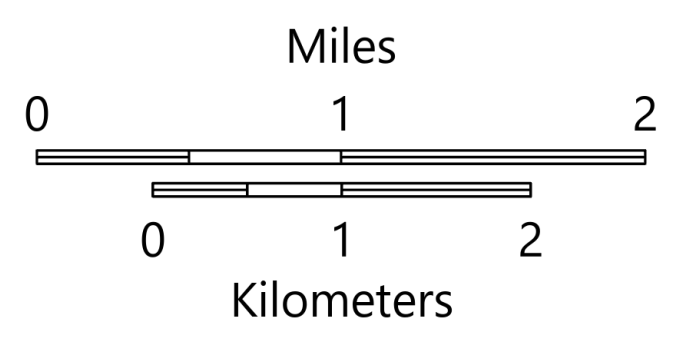


OPERATIONS

Branch I
Telegraph
AZ-TNF-1255
6/9/2021
80,822 acres at 6/8/2021 at 2035 hrs



- Structure
- Substations
- ▲ Campground
- ⊗ Trailhead
- ⊗ BLM Planned Portal Sites
- Point of Interest
- ⊗ Trailhead
- Dip Site
- Heliport
- Heli-base
- ⊗ Division Break
- ⊗ Branch Break
- Drop Point
- Value at Risk
- Gate
- Mobile Weather Unit
- Repeater
- ▲ Safety Zone
- Hazard
- Water Source
- Water Tank
- IR Isolated Heat Source
- Completed Burnout
- Completed Fuel Break
- Completed Hand Line
- Access or Improved Road
- Fire Edge
- Contained Line
- IR Heat Perimeter
- IR Intense Heat
- IR Scattered Heat
- Wildfire Daily Fire Perimeter
- Highway or Major Connecting Road
- Local Connecting Road
- Local Road
- Tonto National Forest Roads
- Tonto National Forest Trails
- Road
- Trail
- Arizona Trail
- Middle Gila Access Route
- Transmission Lines
- APS Distribution Overhead Infrastructure
- Oil and Natural Gas Pipelines
- Structure
- USFS Boundary
- BLM Area of Critical Environmental Concern
- Wilderness Area Boundary
- Federal Land within Wilderness Area
- Township/Range
- Section
- Fire History
- BLM
- BR
- County
- Local or State Parks
- Military
- Other
- Private
- State
- USFS



OPERATIONS

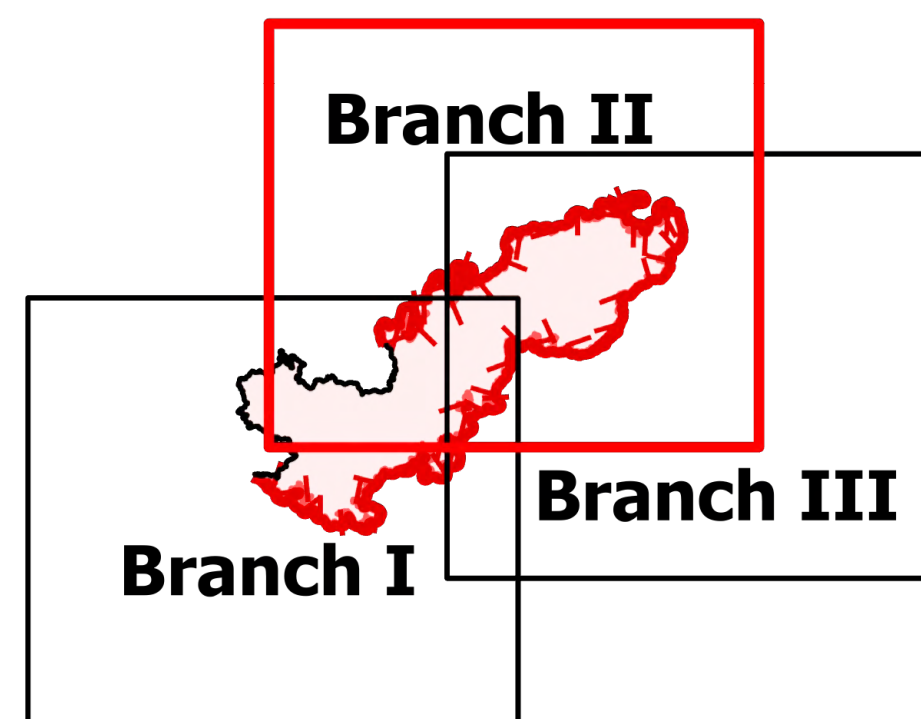
Branch II

Telegraph

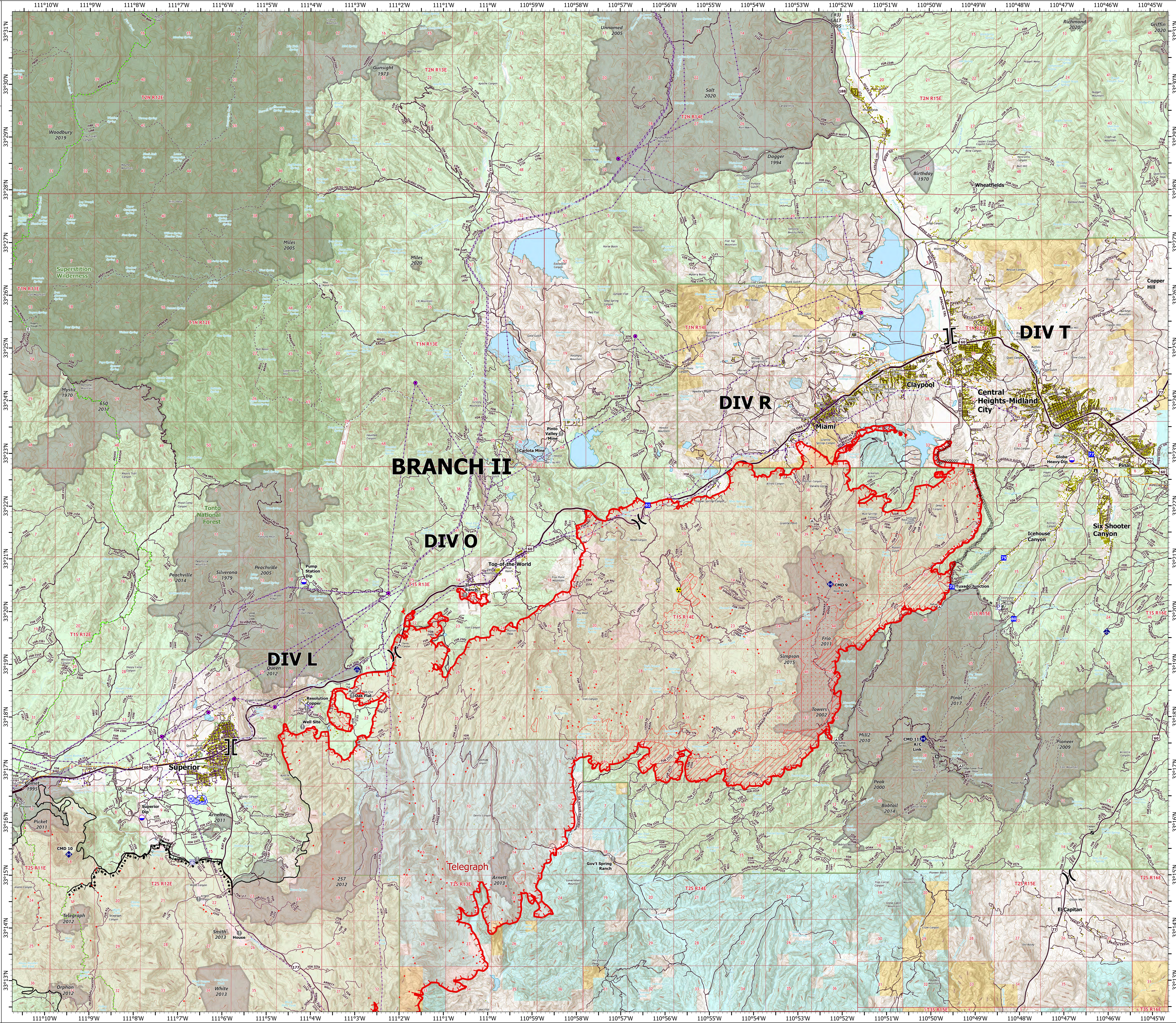
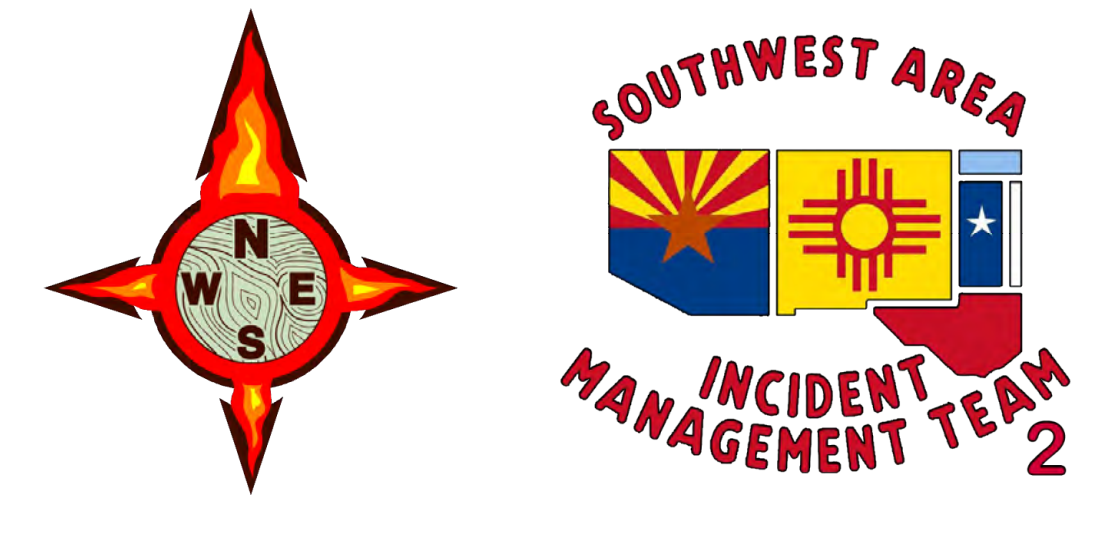
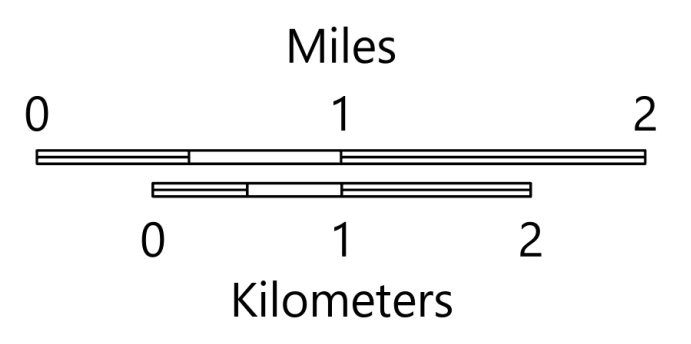
AZ-TNF-1255

6/9/2021

80,822 acres at 6/8/2021 at 2035 hrs



- Structure
- Substations
- ▲ Campground
- ▲ District Office
- ▲ Recreation Residence
- ▲ Trailhead
- ▲ Other
- Dip Site
- Helispot
- Helibase
- ⌘ Division Break
- ⌘ Branch Break
- Drop Point
- Value at Risk
- Landmark
- Gate
- Bridge
- Mobile Weather Unit
- Repeater
- ▲ Safety Zone
- Hazard
- Water Source
- Pump
- Water Tank
- IR Isolated Heat Source
- Completed Burnout
- Completed Dozer Line
- M · M Completed Mixed Construction Line
- R · R Completed Road as Line
- Access or Improved Road
- Fire Edge
- Contained Line
- IR Heat Perimeter
- IR Intense Heat
- IR Scattered Heat
- Wildfire Daily Fire Perimeter
- Highway or Major Connecting Road
- Local Connecting Road
- Local Road
- Tonto National Forest Roads
- Tonto National Forest Trails
- Road
- Arizona Trail
- Transmission Lines
- APS Distribution Overhead Infrastructure
- Oil and Natural Gas Pipelines
- Structure
- USFS Boundary
- Township/Range
- Section
- Fire History
- USFS Wilderness Area
- BLM
- Indian Lands
- Private
- State
- USFS



OPERATIONS

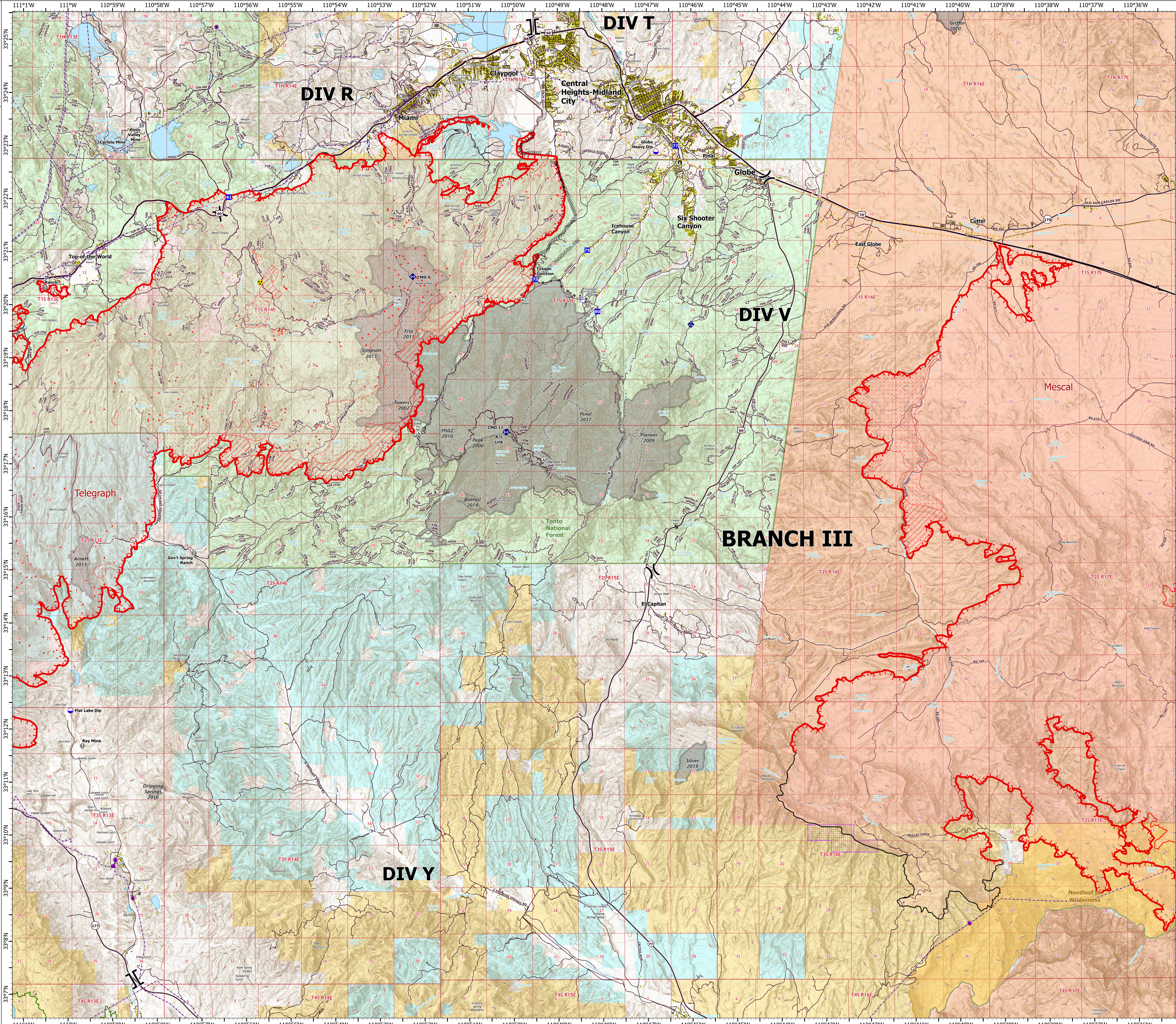
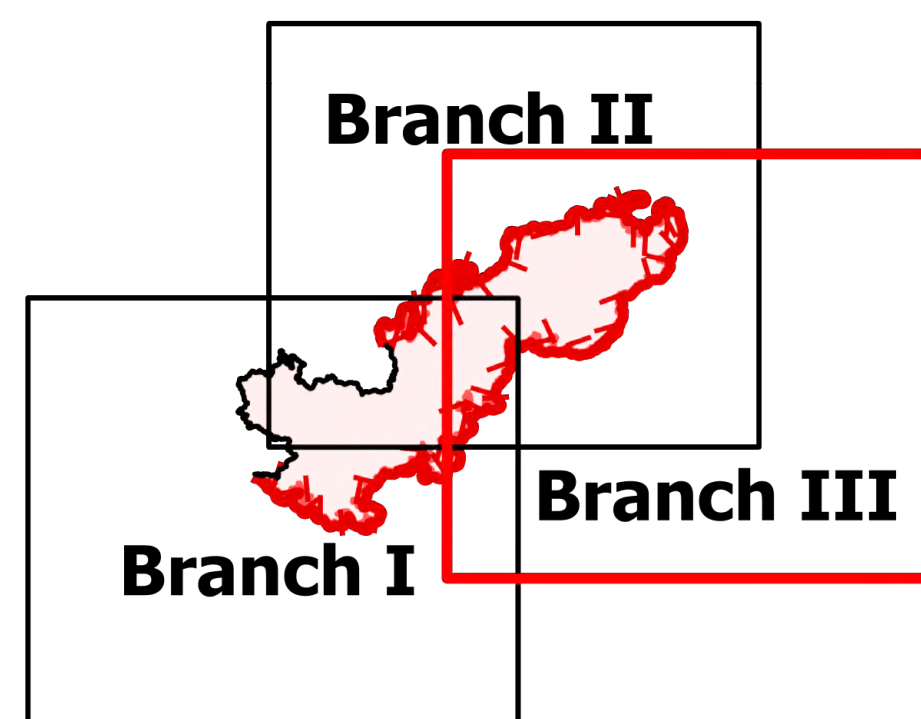
Branch III

Telegraph

AZ-TNF-1255

6/9/2021

80,822 acres at 6/8/2021 at 2035 hrs



- Structure
- Substations
- ▲ Campground
- District Office
- Recreation Residence
- Trailhead
- Other
- Dip Site
- ⌘ Division Break
- ⌘ Branch Break
- Drop Point
- Value at Risk
- Landmark
- Gate
- Bridge
- ◆ Mobile Weather Unit
- ◆ Repeater
- ◆ Hazard
- ◆ Pump
- IR Isolated Heat Source
- Completed Dozer Line
- Completed Mixed Construction Line
- Completed Road as Line
- Fire Edge
- Contained Line
- IR Heat Perimeter
- IR Intense Heat
- IR Scattered Heat
- Wildfire Daily Fire Perimeter
- Highway or Major Connecting Road
- Local Connecting Road
- Local Road
- Tonto National Forest Roads
- Tonto National Forest Trails
- Road
- Arizona Trail
- Transmission Lines
- APS Distribution Overhead Infrastructure
- Oil and Natural Gas Pipelines
- Structure
- USFS Boundary
- BLM Area of Critical Environmental Concern
- Wilderness Area Boundary
- Federal Land within Wilderness Area
- Township/Range
- Section
- Fire History
- BLM
- Indian Lands
- Private
- State
- USFS

