

OPERATIONS

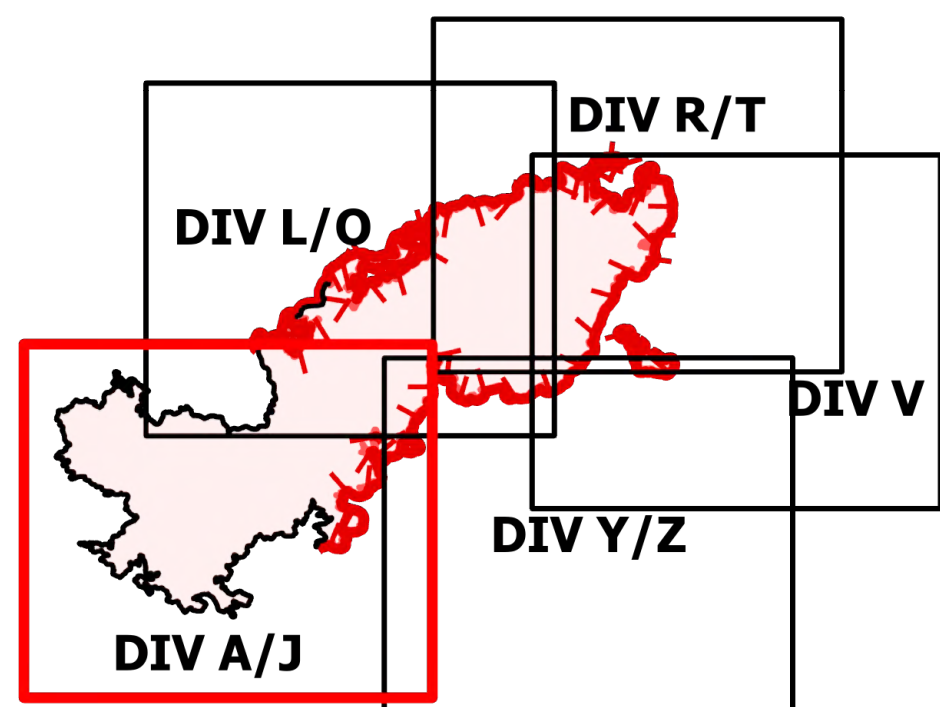
DIV A/J

Telegraph

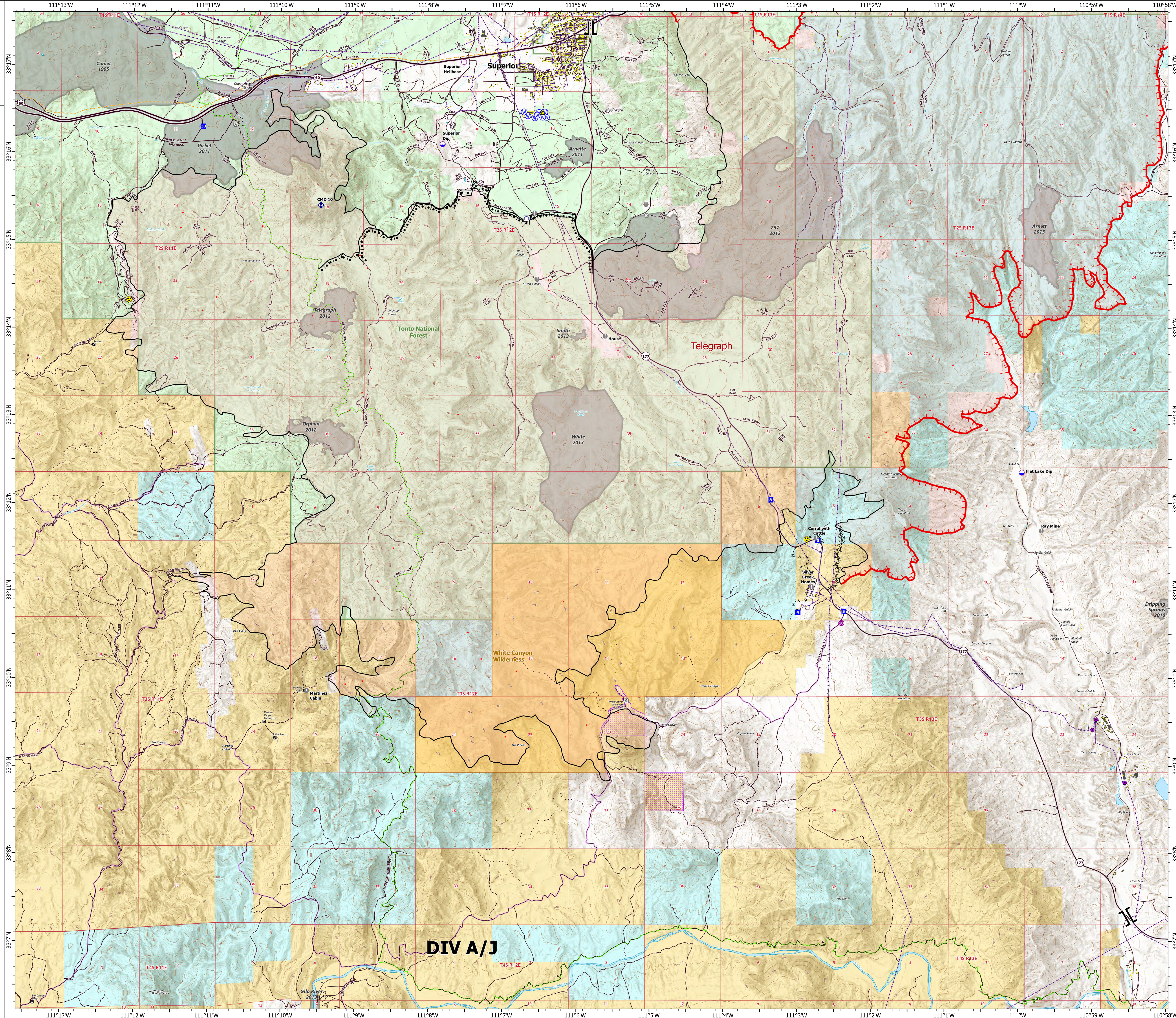
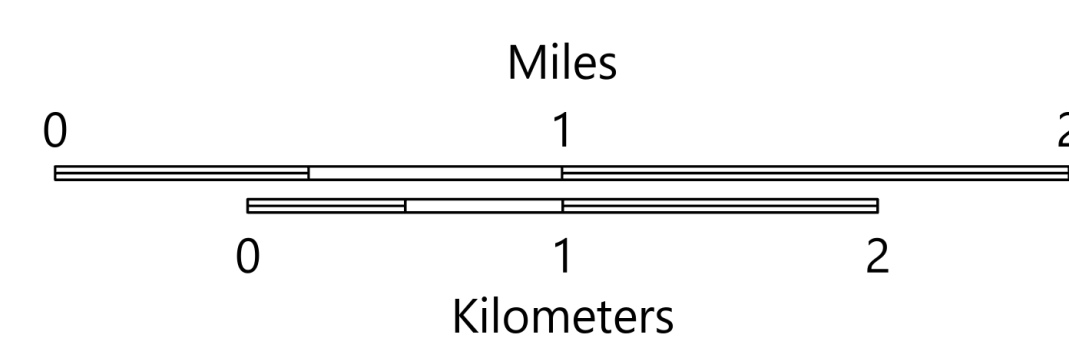
AZ-TNF-1255

6/10/2021

85,901 acres at 6/10/2021 0917



- Structure
- Substations
- Trailhead
- BLM Planned Portal Sites
- Point of Interest
- Trailhead
- Dip Site
- Helispot
- Helibase
- Branch Break
- Drop Point
- Value at Risk
- Gate
- Repeater
- Safety Zone
- Hazard
- Water Source
- Water Tank
- IR Isolated Heat Source
- Completed Burnout
- Completed Fuel Break
- Completed Hand Line
- Fire Edge
- Contained Line
- Wildfire Daily Fire Perimeter
- Highway or Major Connecting Road
- Local Connecting Road
- Local Road
- Tonto National Forest Roads
- Tonto National Forest Trails
- Road
- Trail
- Arizona Trail
- Middle Gila Access Route
- Transmission Lines
- Oil and Natural Gas Pipelines
- APS Distribution Overhead Infrastructure
- Structure
- USFS Boundary
- County or Equivalent
- BLM Area of Critical Environmental Concern
- Wilderness Area Boundary
- Federal Land within Wilderness Area
- Township/Range
- Section
- Fire History
- BLM
- BR
- Private
- State
- USFS



DIV A/J

OPERATIONS

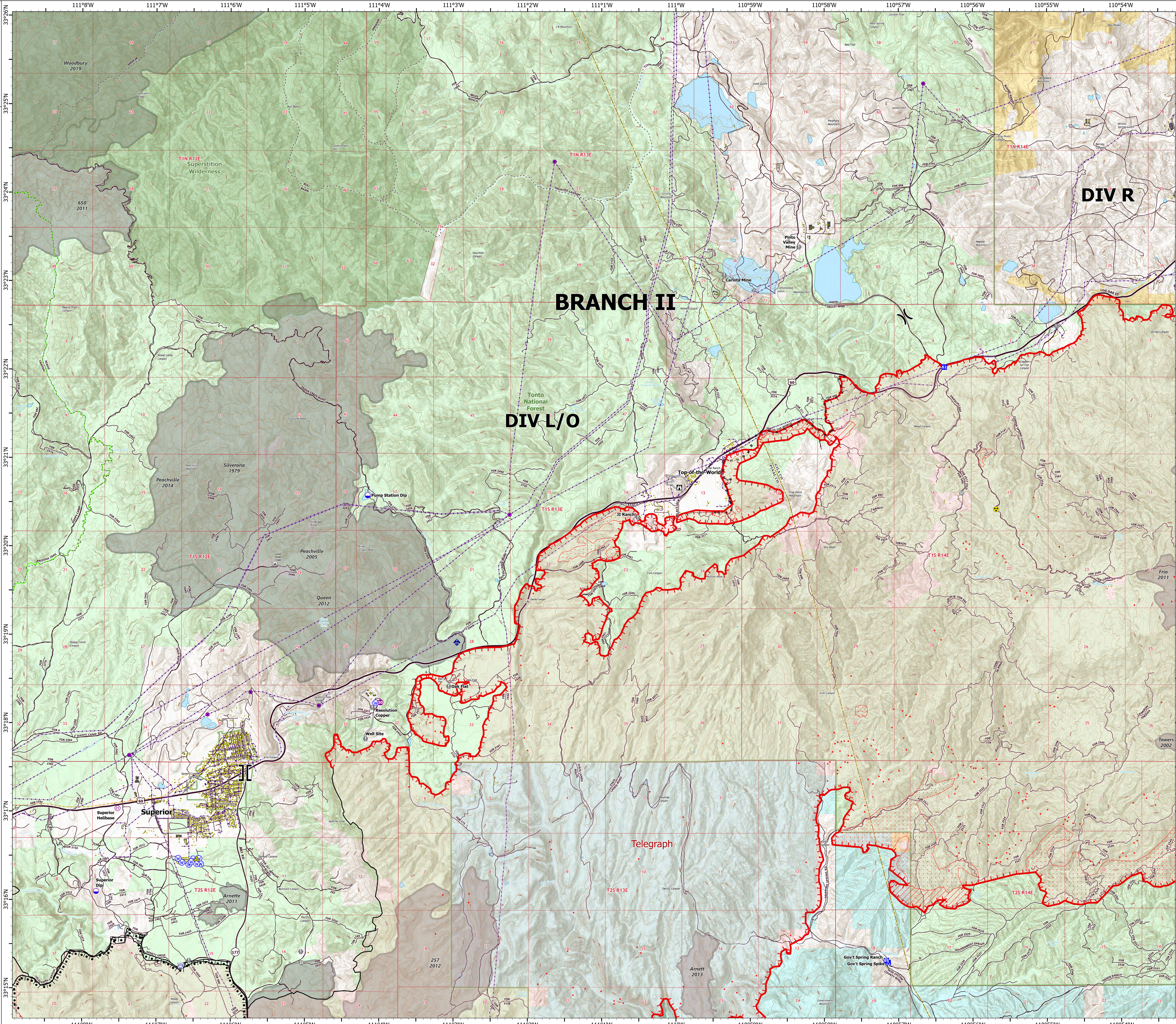
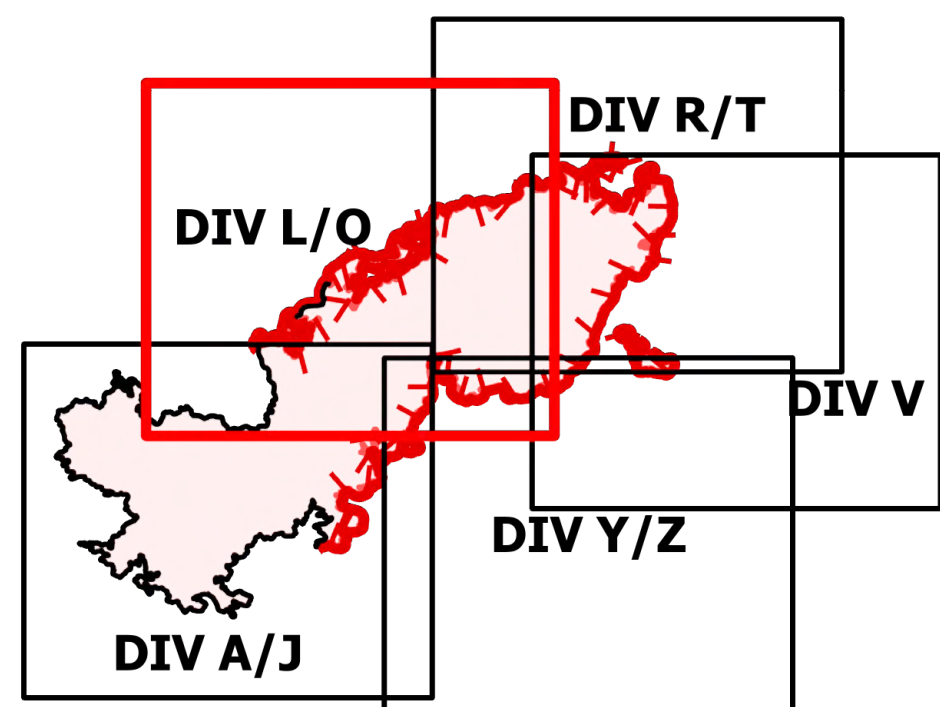
DIV L/O

Telegraph

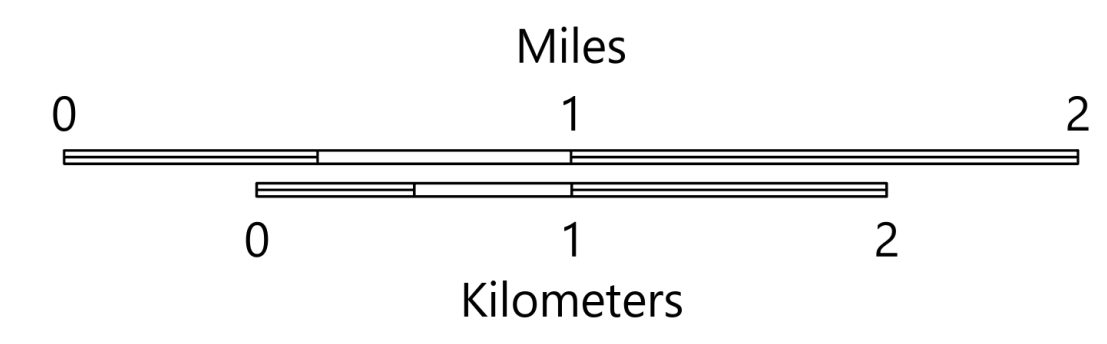
AZ-TNF-1255

6/10/2021

85,901 acres at 6/10/2021 0917



- Structure
- Substations
- ▲ Campground
- Dip Site
- Helispot
- Helibase
-) Division Break
- | Branch Break
- Drop Point
- ▲ Camp
- ▲ Lookout
- Value at Risk
- Gate
- Bridge
- Mobile Weather Unit
- ▲ Safety Zone
- ▲ Hazard
- Water Source
- Water Tank
- IR Isolated Heat Source
- Completed Burnout
- H — H Completed Hand Line
- M — M Completed Mixed Construction Line
- R — R Completed Road as Line
- Access or Improved Road
- Fire Edge
- Contained Line
- IR Intense Heat
- IR Scattered Heat
- Wildfire Daily Fire Perimeter
- Highway or Major Connecting Road
- Local Connecting Road
- Local Road
- Tonto National Forest Roads
- Tonto National Forest Trails
- Road
- Arizona Trail
- Transmission Lines
- Oil and Natural Gas Pipelines
- APS Distribution Overhead Infrastructure
- Structure
- USFS Boundary
- County or Equivalent
- Township/Range
- Section
- Fire History
- USFS Wilderness Area
- BLM
- Private
- State
- USFS



OPERATIONS

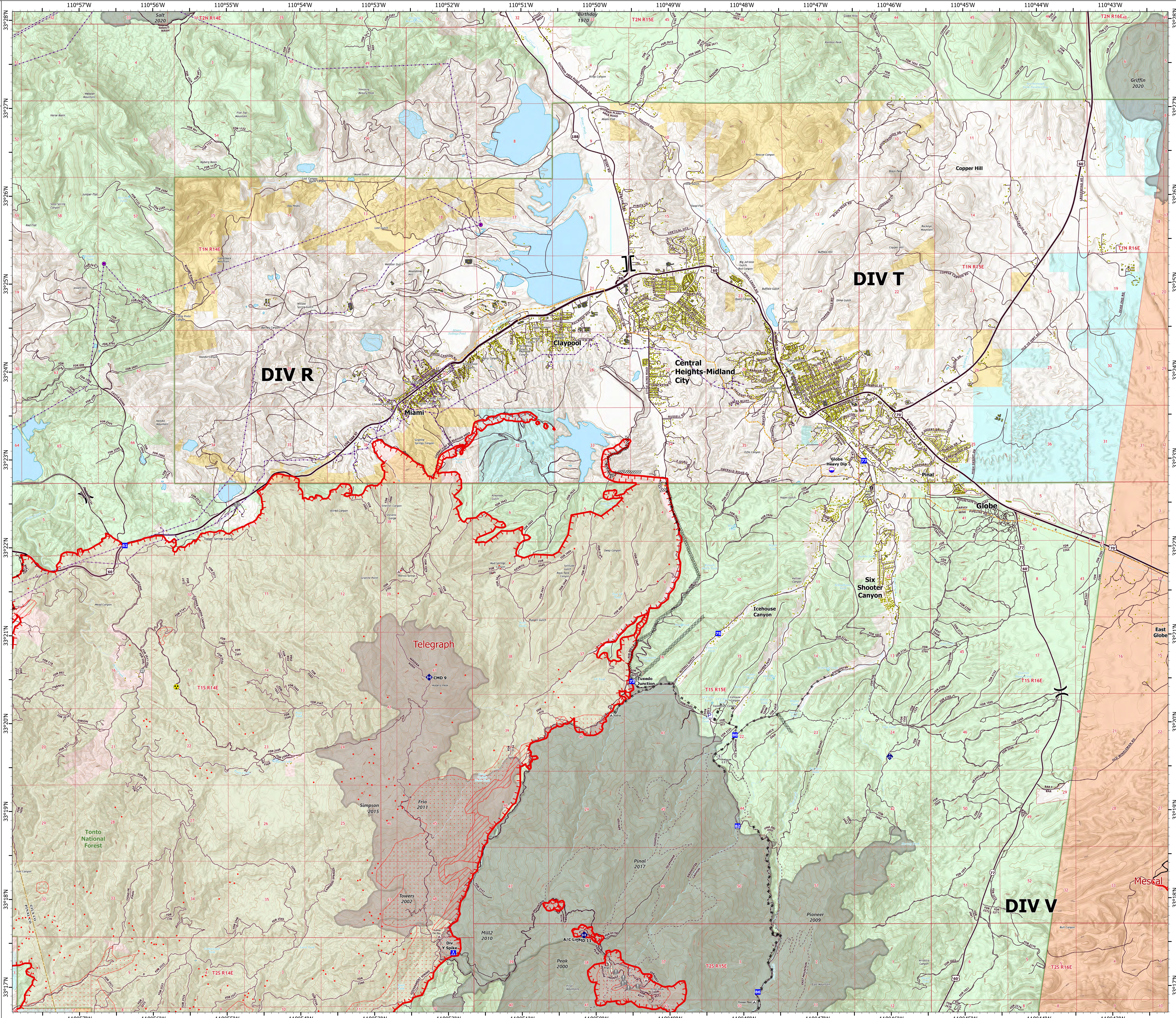
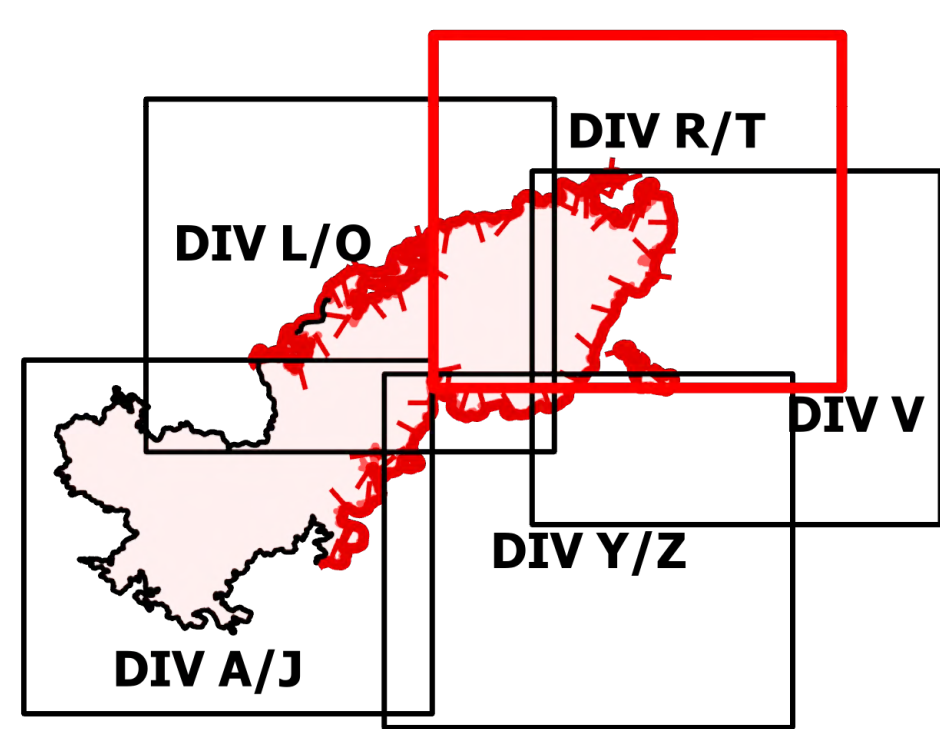
DIV R/T

Telegraph

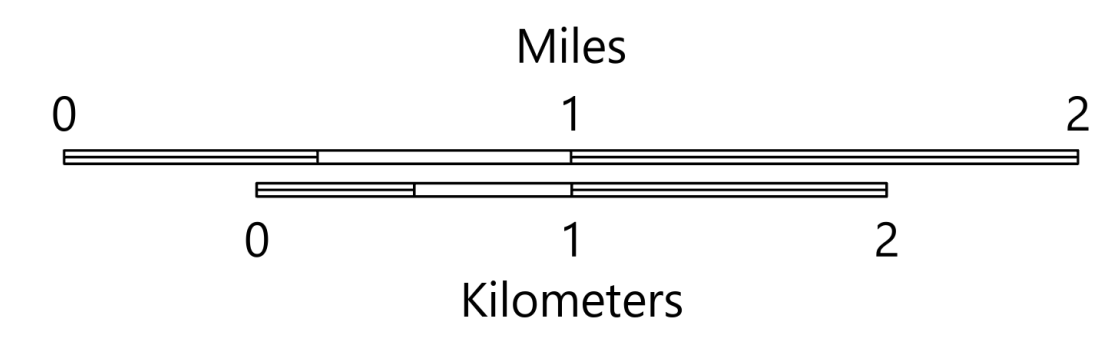
AZ-TNF-1255

6/10/2021

85,901 acres at 6/10/2021 0917



- Structure
- Substations
- ▲ Campground
- ▲ District Office
- ▲ Recreation Residence
- ⊗ Trailhead
- Dip Site
- ⌋ Division Break
- ⌋ Branch Break
- Drop Point
- ▲ Camp
- Value at Risk
- Landmark
- Gate
- Bridge
- ◆ Mobile Weather Unit
- ◆ Repeater
- ⚠ Hazard
- Ⓟ Pump
- IR Isolated Heat Source
- ⊞ Completed Dozer Line
- ⊞ Completed Mixed Construction Line
- ⊞ Completed Road as Line
- Fire Edge
- Contained Line
- IR Heat Perimeter
- IR Intense Heat
- IR Scattered Heat
- Wildfire Daily Fire Perimeter
- Highway or Major Connecting Road
- Local Connecting Road
- Local Road
- Tonto National Forest Roads
- Tonto National Forest Trails
- Road
- Transmission Lines
- Oil and Natural Gas Pipelines
- APS Distribution Overhead Infrastructure
- Structure
- USFS Boundary
- County or Equivalent
- Township/Range
- Section
- Fire History
- BLM
- Indian Lands
- Private
- State
- USFS



OPERATIONS

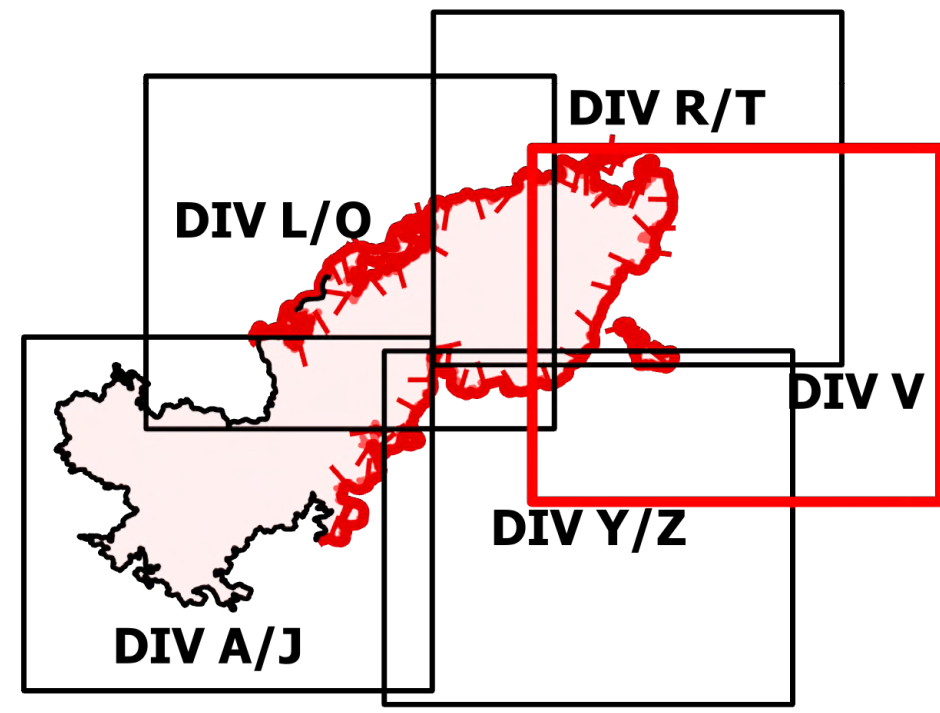
DIV V

Telegraph

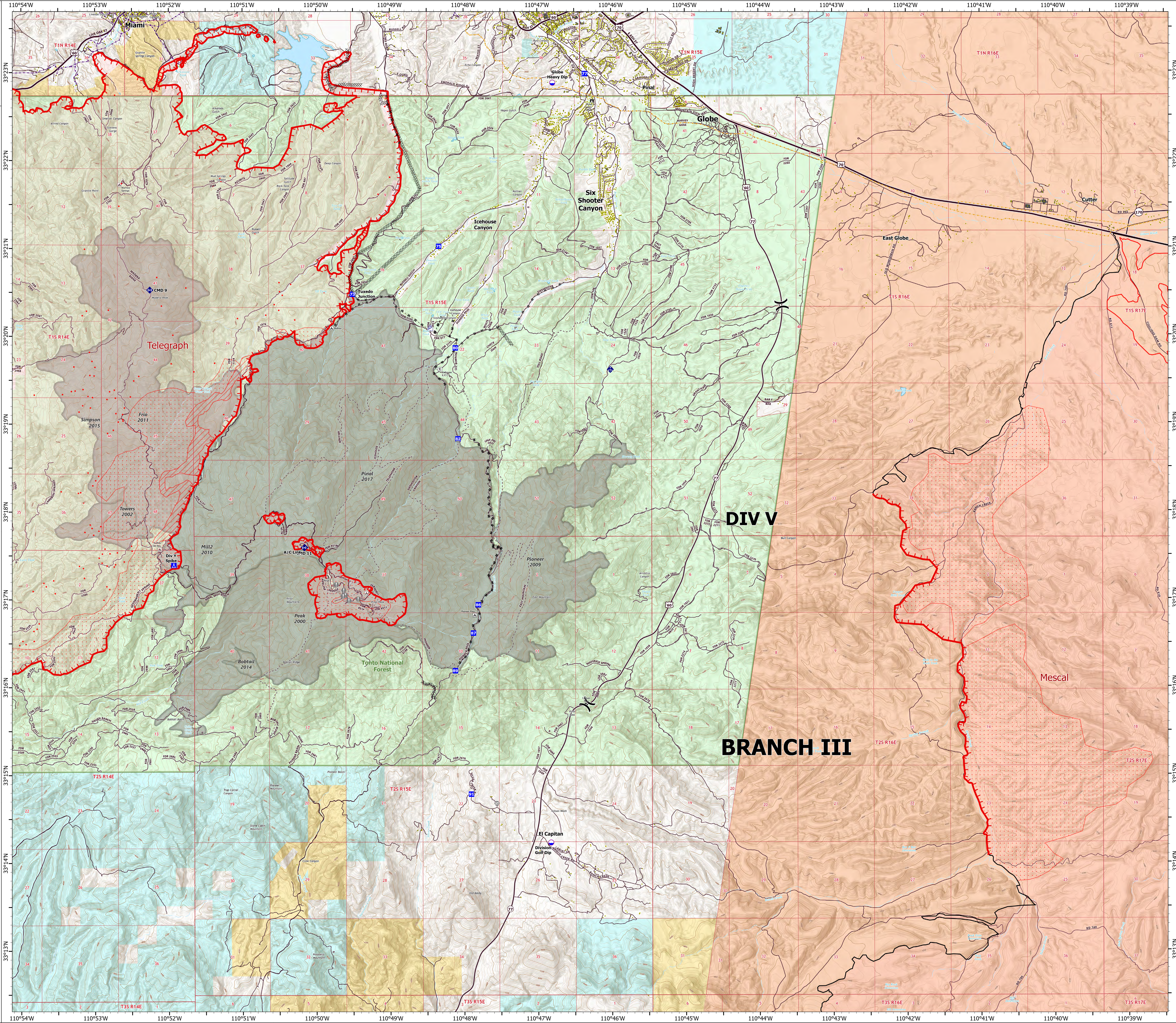
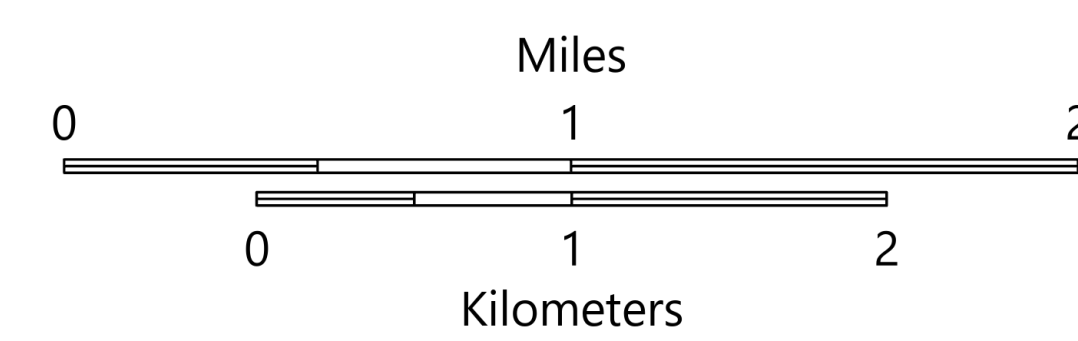
AZ-TNF-1255

6/10/2021

85,901 acres at 6/10/2021 0917



- Structure
- ▲ Campground
- District Office
- Recreation Residence
- ▲ Trailhead
- Other
- Dip Site
- ⋈ Division Break
- Drop Point
- Camp
- Value at Risk
- Landmark
- Gate
- Bridge
- Mobile Weather Unit
- Repeater
- Pump
- IR Isolated Heat Source
- Completed Dozer Line
- Completed Mixed Construction Line
- Completed Road as Line
- Fire Edge
- Contained Line
- IR Heat Perimeter
- IR Intense Heat
- IR Scattered Heat
- Wildfire Daily Fire Perimeter
- Highway or Major Connecting Road
- Local Connecting Road
- Local Road
- Tonto National Forest Roads
- Tonto National Forest Trails
- Road
- Oil and Natural Gas Pipelines
- APS Distribution Overhead Infrastructure
- Structure
- USFS Boundary
- County or Equivalent
- Township/Range
- Section
- Fire History
- BLM
- Indian Lands
- Private
- State
- USFS



OPERATIONS

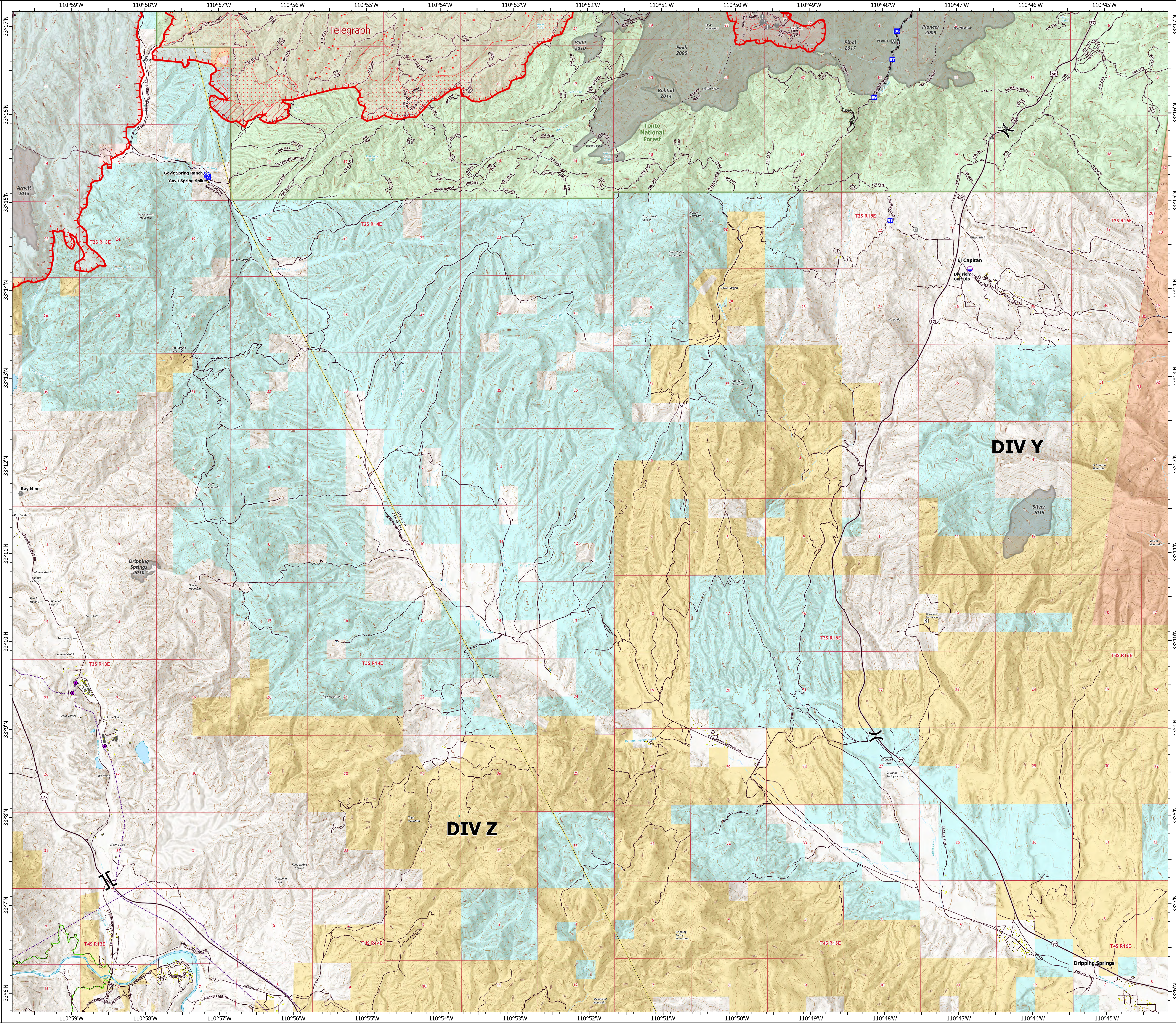
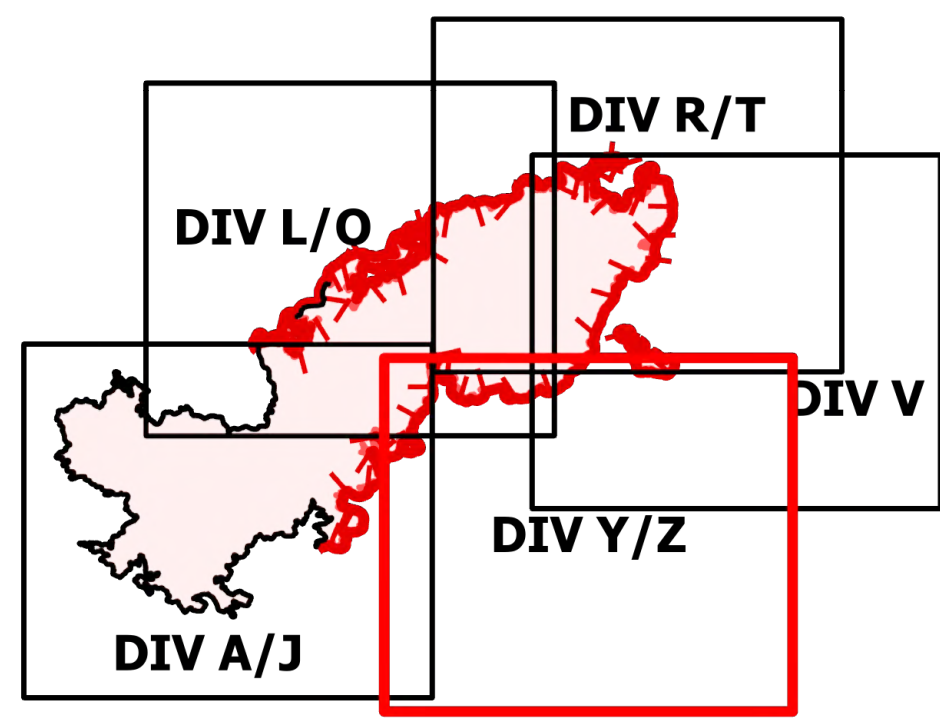
DIV Y/Z

Telegraph

AZ-TNF-1255

6/10/2021

85,901 acres at 6/10/2021 0917



- Structure
- Substations
- ▲ Campground
- Other
- Trailhead
- Dip Site
- Division Break
- Branch Break
- Drop Point
- ▲ Camp
- Value at Risk
- Gate
- IR Isolated Heat Source
- Completed Dozer Line
- - - Completed Mixed Construction Line
- Fire Edge
- Contained Line
- ▨ IR Intense Heat
- ▨ IR Scattered Heat
- ▨ Wildfire Daily Fire Perimeter
- Local Connecting Road
- Local Road
- Tonto National Forest Roads
- Tonto National Forest Trails
- Road
- Trail
- Arizona Trail
- Transmission Lines
- Structure
- USFS Boundary
- County or Equivalent
- Township/Range
- Section
- Fire History
- BLM
- Indian Lands
- Private
- State
- USFS

