

OPERATIONS

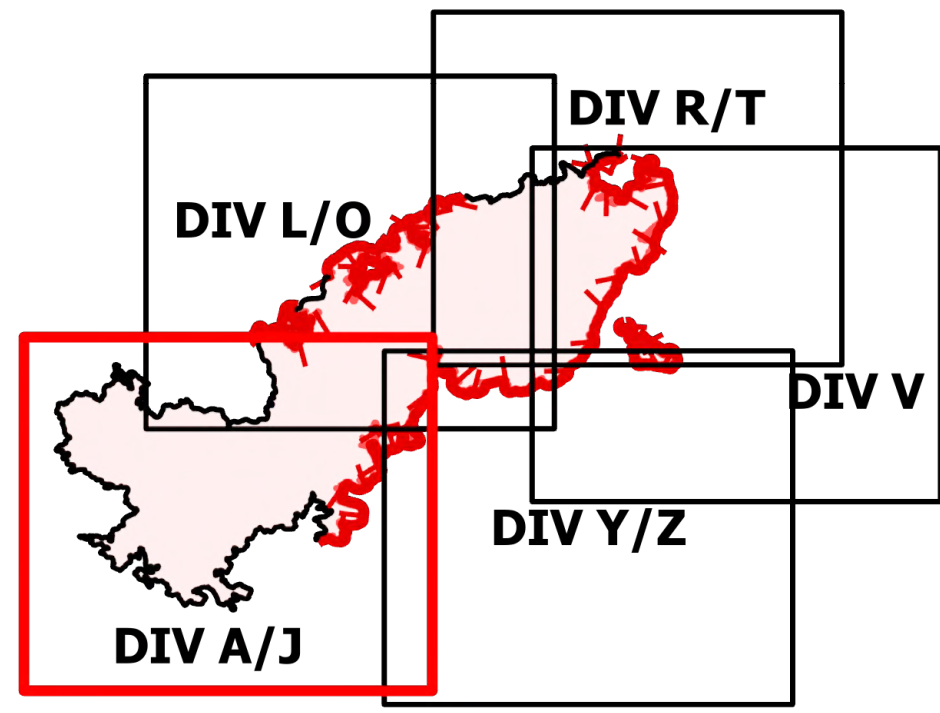
DIV A/J

Telegraph

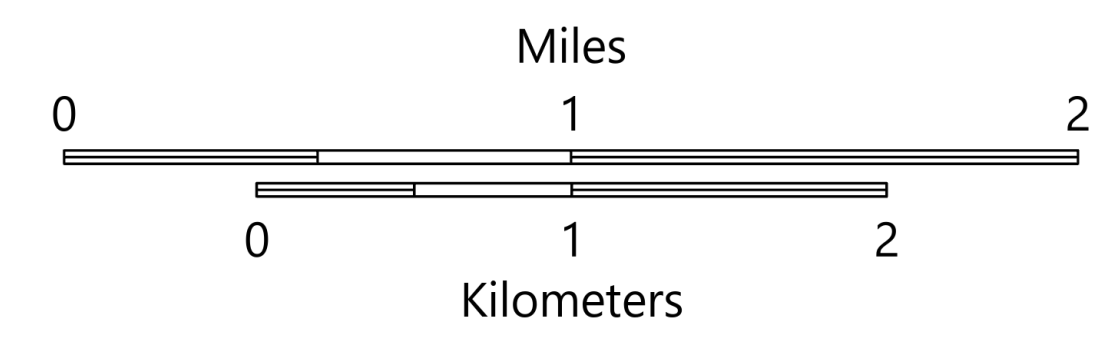
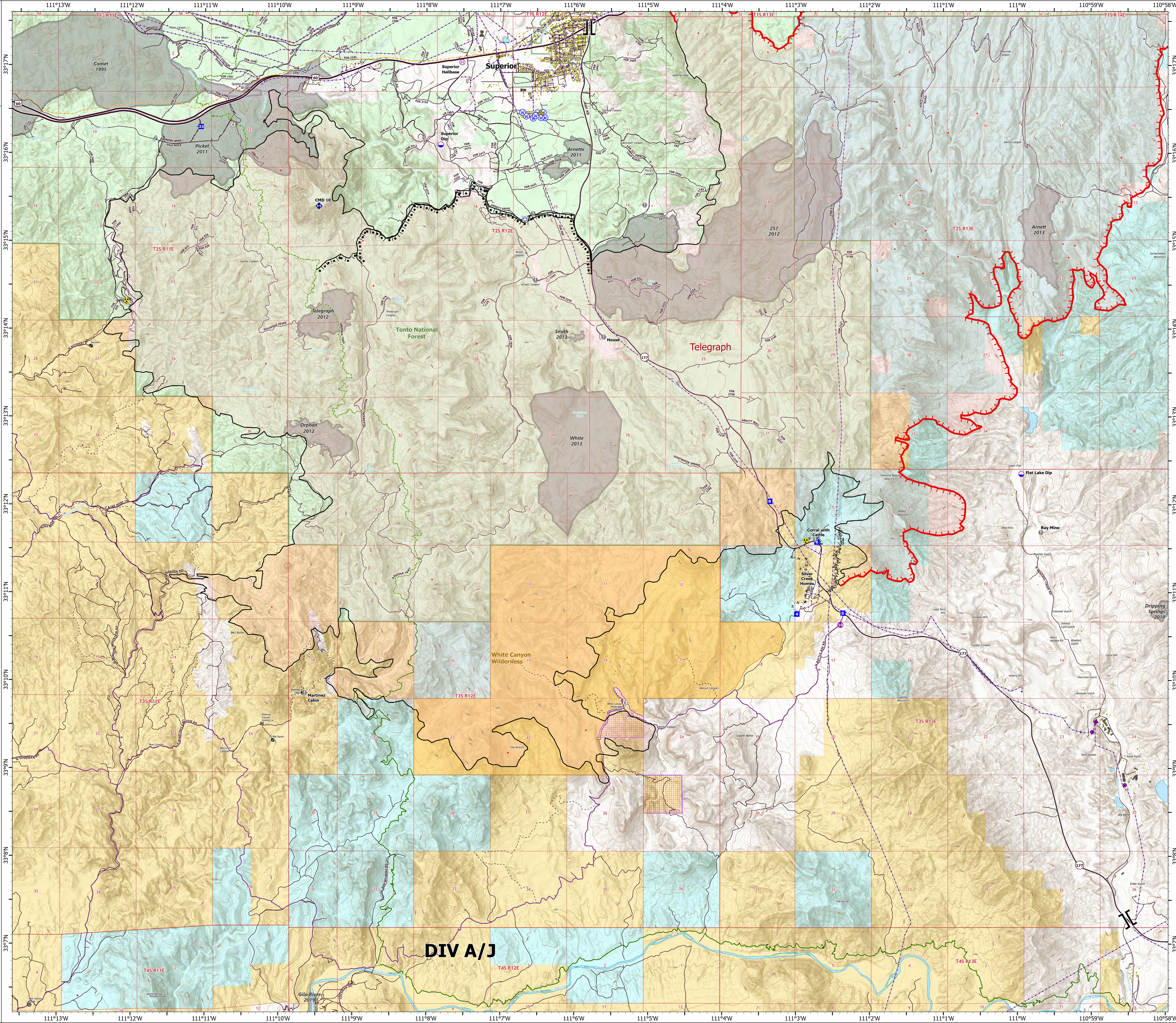
AZ-TNF-1255

6/11/2021

86,529 acres at 6/10/2021 2058



- Structure
- Substations
- ⊠ Trailhead
- ⊠ BLM Planned Portal Sites
- ⊠ Point of Interest
- ⊠ Trailhead
- Dip Site
- Helispot
- ⊠ Helibase
- ⊠ Branch Break
- Drop Point
- Value at Risk
- Gate
- Repeater
- ▲ Safety Zone
- Hazard
- Water Source
- Water Tank
- IR Isolated Heat Source
- ⊠ Completed Burnout
- MM Completed Fuel Break
- H · H Completed Hand Line
- Fire Edge
- Contained Line
- IR Heat Perimeter
- Wildfire Daily Fire Perimeter
- Highway or Major Connecting Road
- Local Connecting Road
- Local Road
- Tonto National Forest Roads
- Tonto National Forest Trails
- Road
- Trail
- Arizona Trail
- Middle Gila Access Route
- Transmission Lines
- Oil and Natural Gas Pipelines
- APS Distribution Overhead Infrastructure
- Structure
- USFS Boundary
- County or Equivalent
- BLM Area of Critical Environmental Concern
- Wilderness Area Boundary
- Federal Land within Wilderness Area
- Township/Range
- Section
- Fire History
- BLM
- BR
- Private
- State
- USFS



OPERATIONS

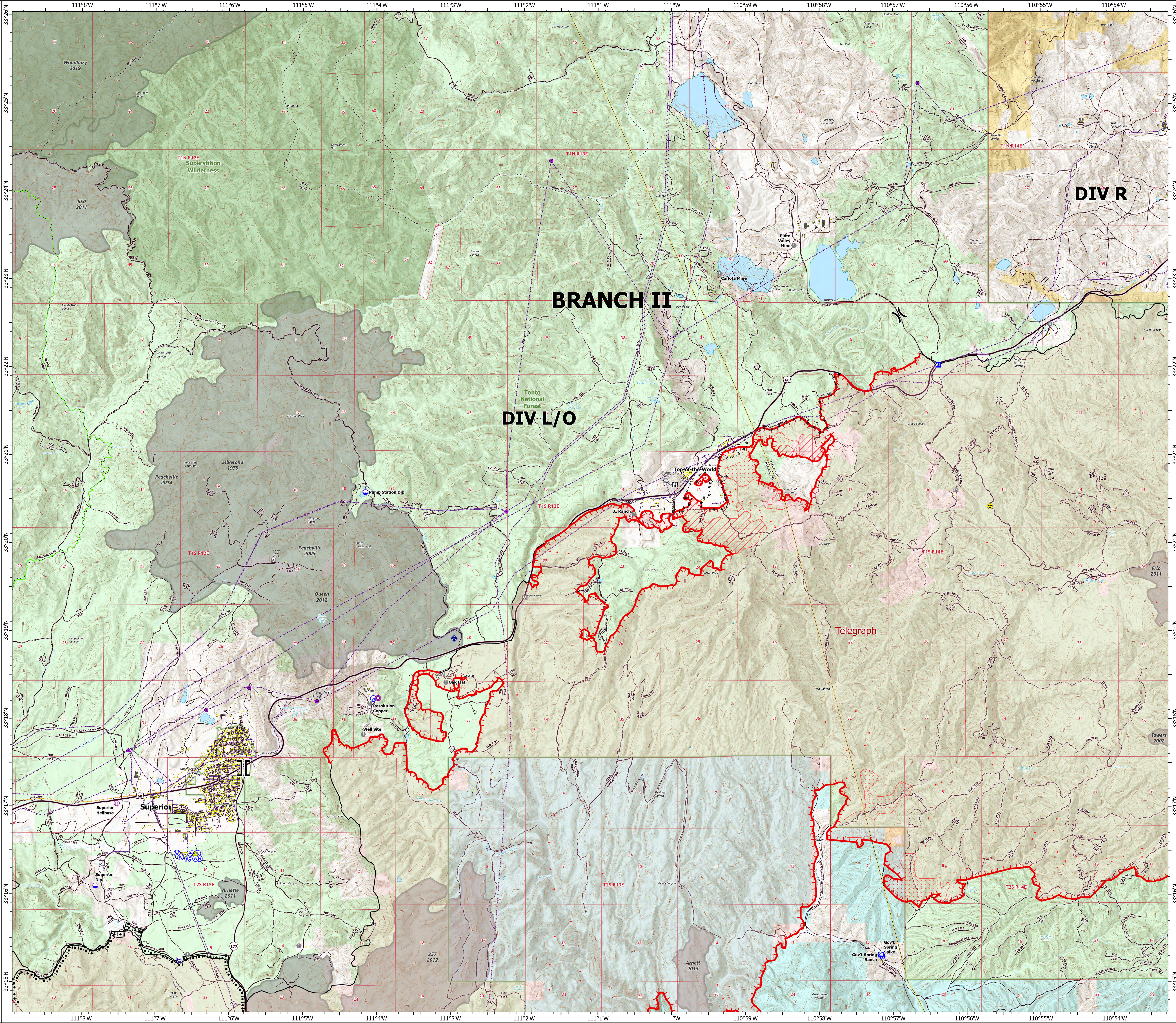
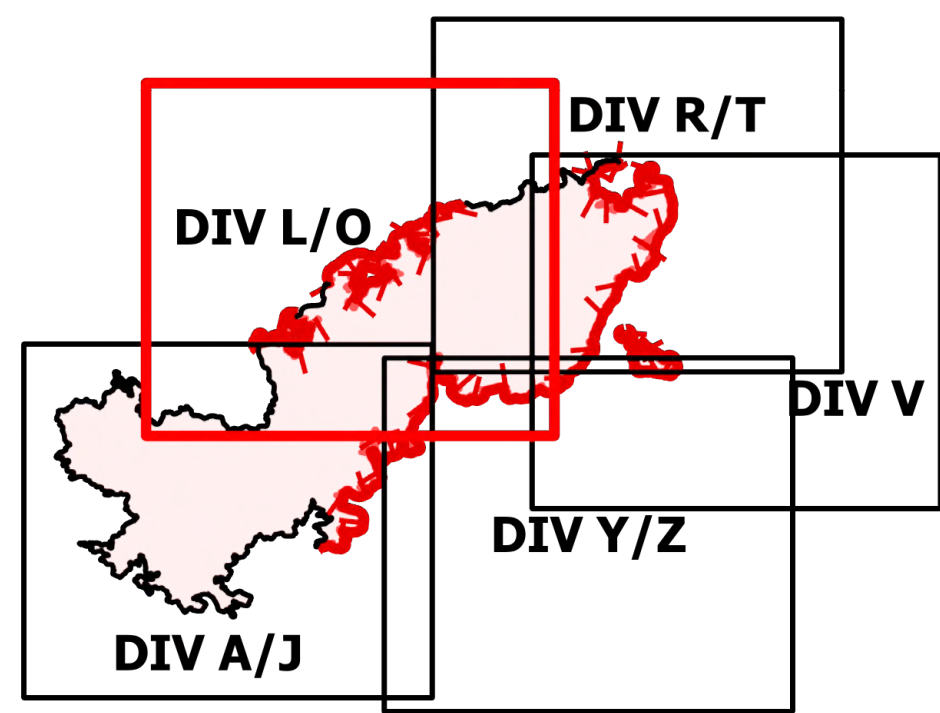
DIV L/O

Telegraph

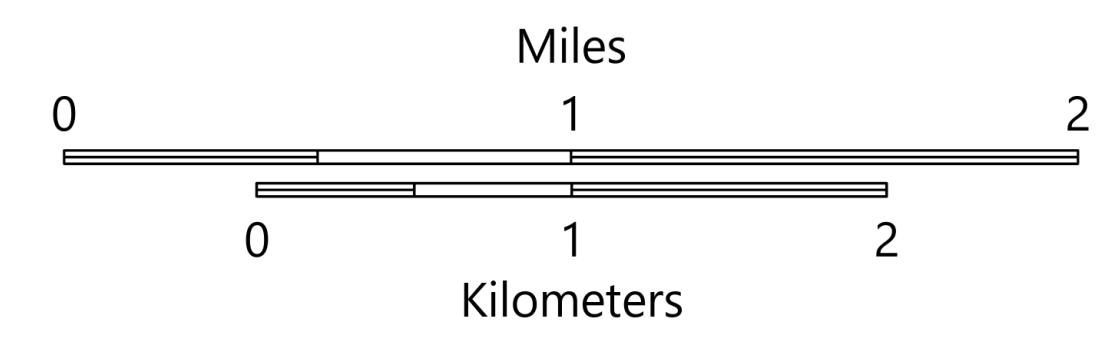
AZ-TNF-1255

6/11/2021

86,529 acres at 6/10/2021 2058



- Structure
- Substations
- ▲ Campground
- Dip Site
- Helispot
- Helibase
- ⌘ Division Break
- ⌘ Branch Break
- Drop Point
- Camp
- Lookout
- Value at Risk
- Gate
- Bridge
- ◆ Mobile Weather Unit
- ▲ Safety Zone
- ▲ Hazard
- Water Source
- Water Tank
- IR Isolated Heat Source
- Completed Burnout
- Completed Hand Line
- Completed Mixed Construction Line
- Completed Road as Line
- Access or Improved Road
- Fire Edge
- Contained Line
- IR Heat Perimeter
- IR Intense Heat
- IR Scattered Heat
- Wildfire Daily Fire Perimeter
- Highway or Major Connecting Road
- Local Connecting Road
- Local Road
- Tonto National Forest Roads
- Tonto National Forest Trails
- Road
- Arizona Trail
- Transmission Lines
- Oil and Natural Gas Pipelines
- APS Distribution Overhead Infrastructure
- Structure
- USFS Boundary
- County or Equivalent
- Township/Range
- Section
- Fire History
- USFS Wilderness Area
- BLM
- Private
- State
- USFS



OPERATIONS

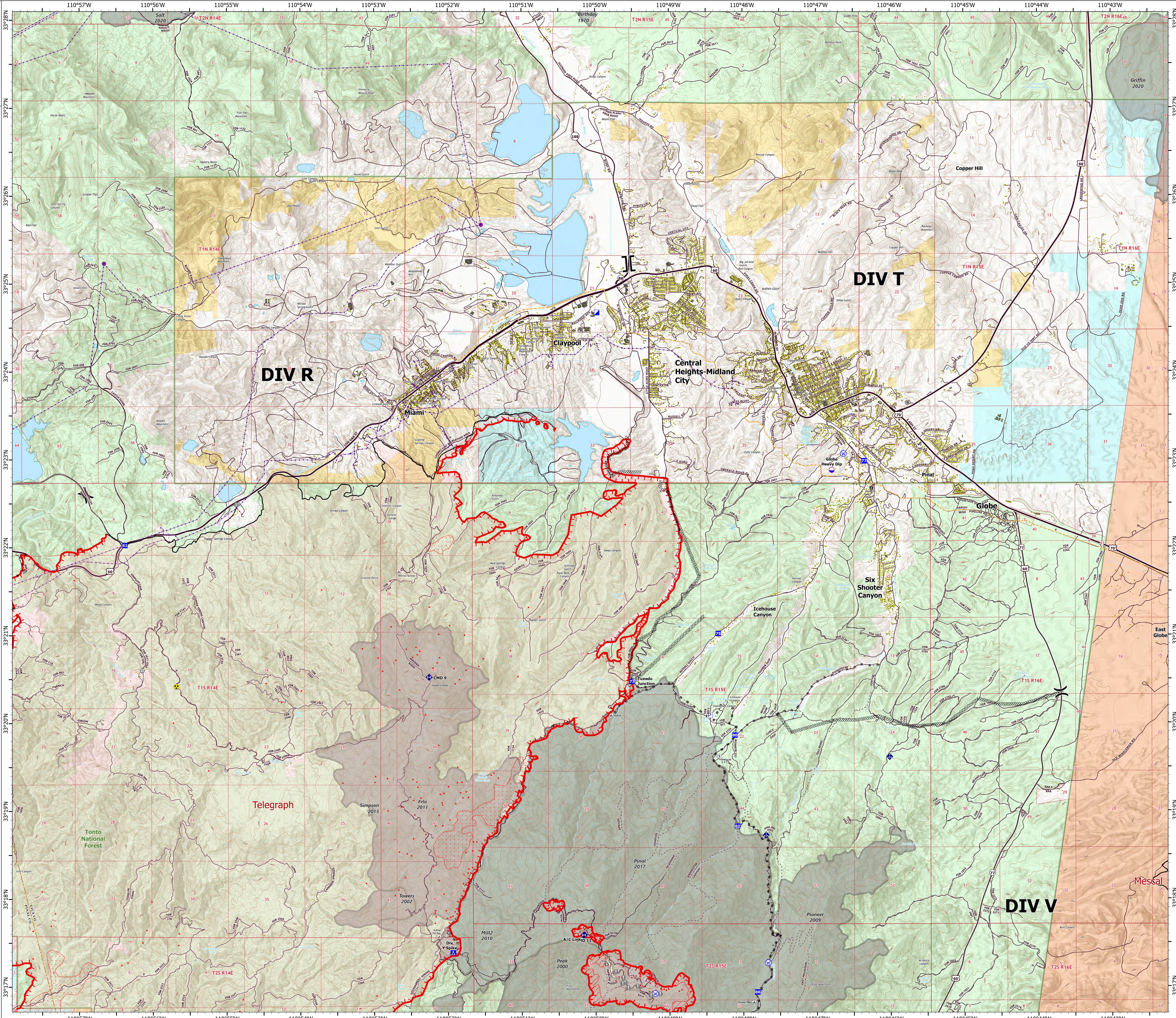
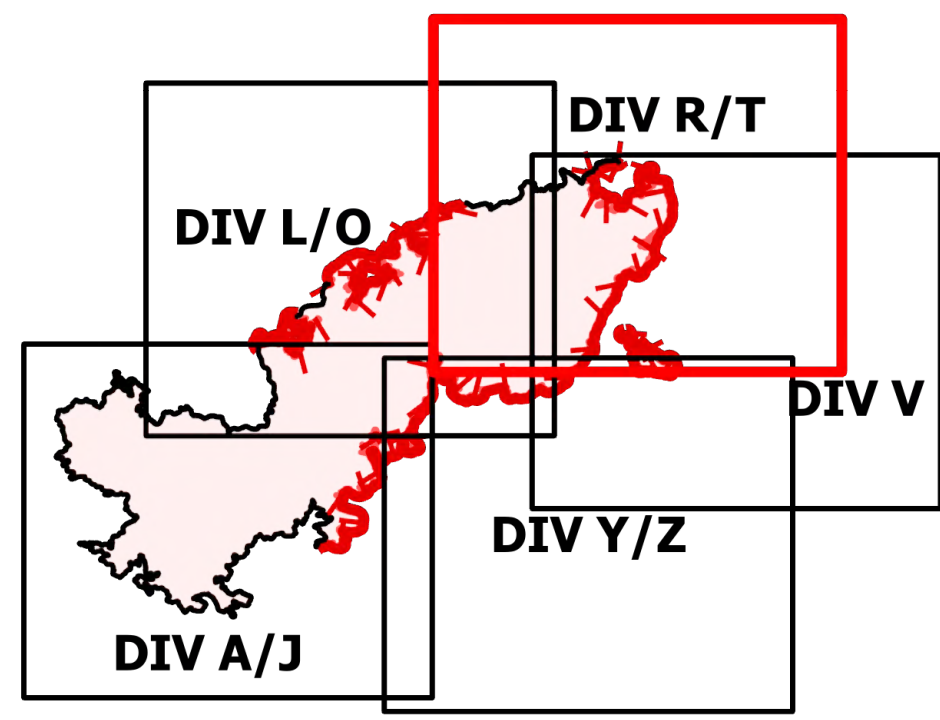
DIV R/T

Telegraph

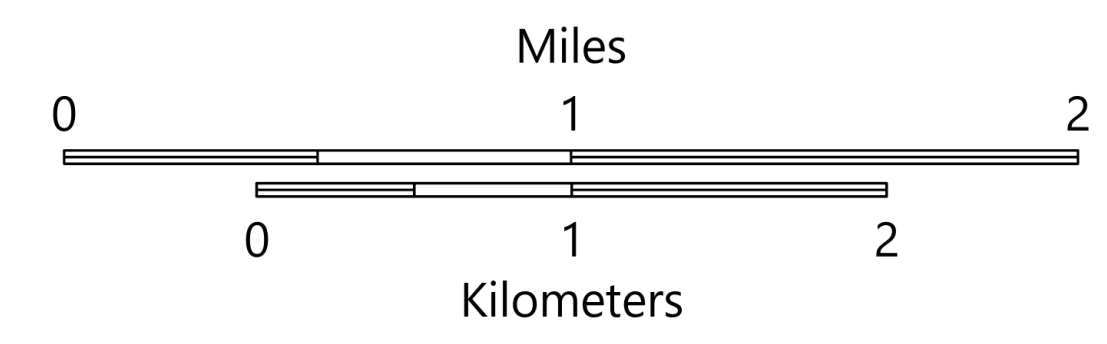
AZ-TNF-1255

6/11/2021

86,529 acres at 6/10/2021 2058



- Structure
- Substations
- ▲ Campground
- District Office
- Recreation Residence
- Trailhead
- Dip Site
- Division Break
- Branch Break
- Incident Command Post
- Drop Point
- Camp
- Value at Risk
- Landmark
- Gate
- Bridge
- Mobile Weather Unit
- Repeater
- Hazard
- Water Source
- Pump
- IR Isolated Heat Source
- Completed Dozer Line
- Completed Hand Line
- Completed Mixed Construction Line
- Completed Road as Line
- Fire Edge
- Contained Line
- IR Heat Perimeter
- IR Intense Heat
- IR Scattered Heat
- Wildfire Daily Fire Perimeter
- Highway or Major Connecting Road
- Local Connecting Road
- Local Road
- Tonto National Forest Roads
- Tonto National Forest Trails
- Road
- Transmission Lines
- Oil and Natural Gas Pipelines
- APS Distribution Overhead Infrastructure
- Structure
- USFS Boundary
- County or Equivalent
- Township/Range
- Section
- Fire History
- BLM
- Indian Lands
- Private
- State
- USFS



OPERATIONS

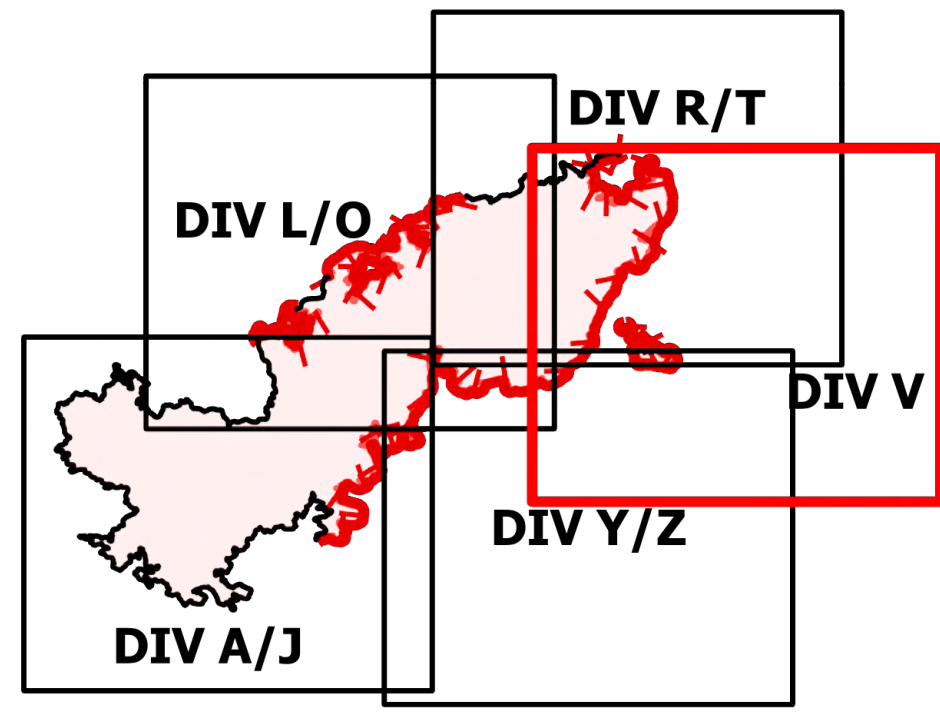
DIV V

Telegraph

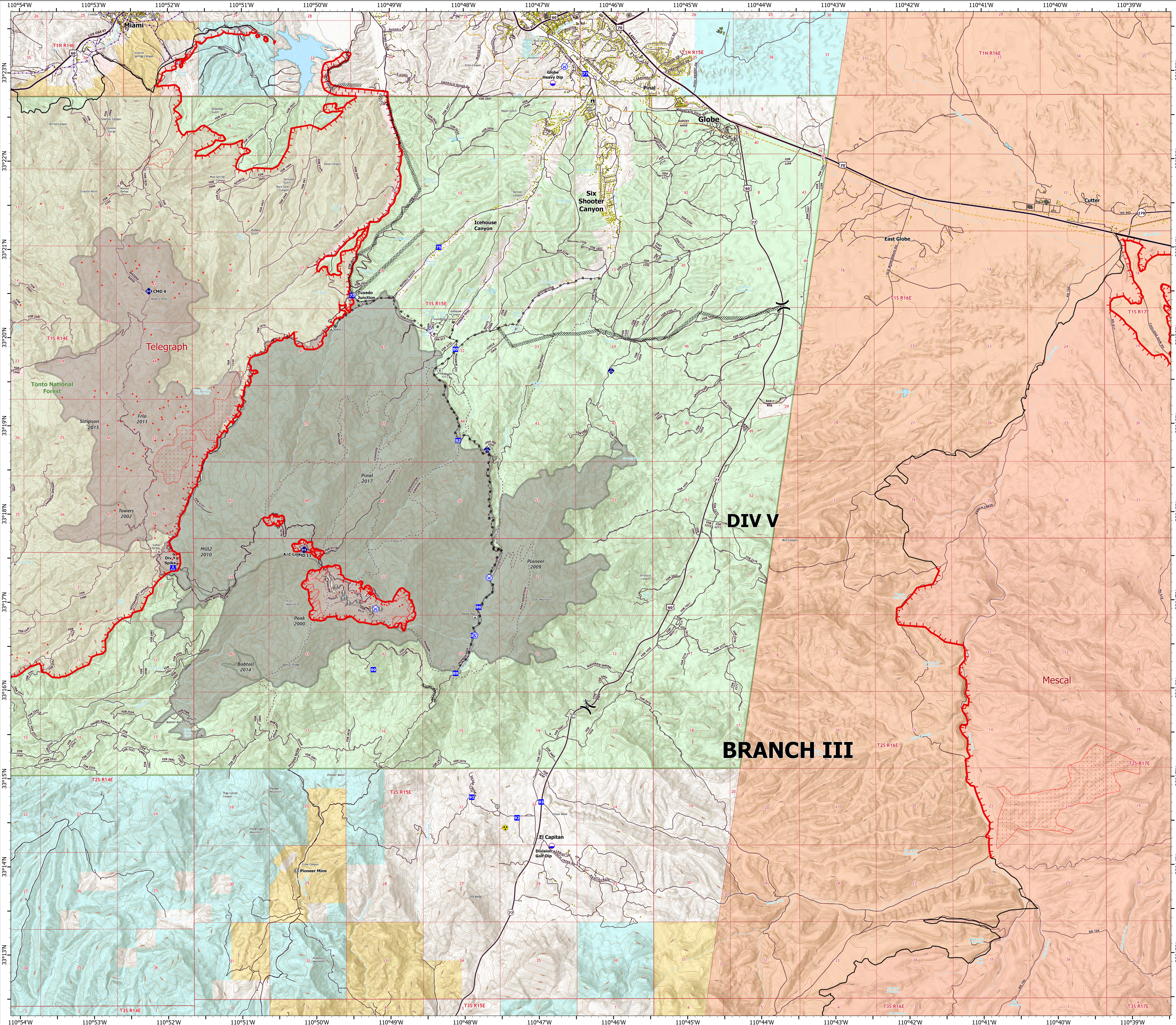
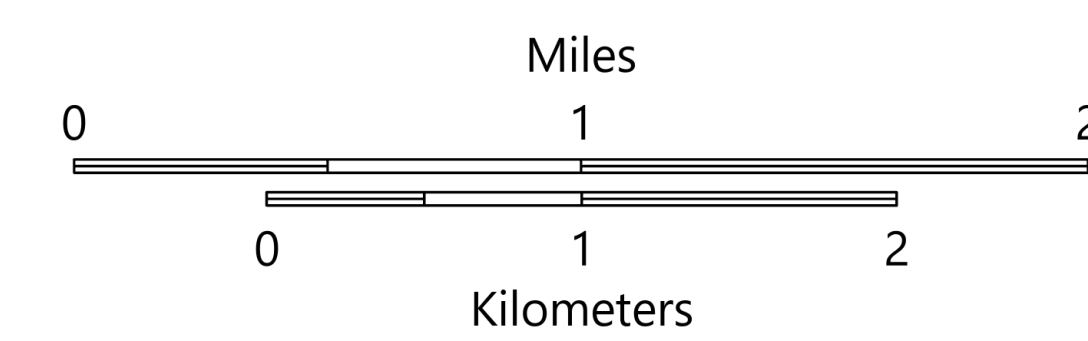
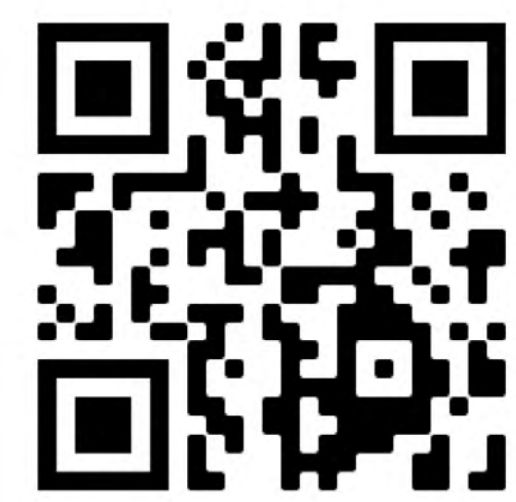
AZ-TNF-1255

6/11/2021

86,529 acres at 6/10/2021 2058



- Structure
- ▲ Campground
- District Office
- Recreation Residence
- Trailhead
- Other
- Dip Site
- Division Break
- Drop Point
- Camp
- Value at Risk
- Landmark
- Gate
- Bridge
- Mobile Weather Unit
- Repeater
- Hazard
- Water Source
- Pump
- IR Isolated Heat Source
- Completed Dozer Line
- Completed Hand Line
- Completed Mixed Construction Line
- Completed Road as Line
- Fire Edge
- Contained Line
- IR Heat Perimeter
- IR Intense Heat
- IR Scattered Heat
- Wildfire Daily Fire Perimeter
- Highway or Major Connecting Road
- Local Connecting Road
- Local Road
- Tonto National Forest Roads
- Tonto National Forest Trails
- Road
- Oil and Natural Gas Pipelines
- APS Distribution Overhead Infrastructure
- Structure
- USFS Boundary
- County or Equivalent
- Township/Range
- Section
- Fire History
- BLM
- Indian Lands
- Private
- State
- USFS



OPERATIONS

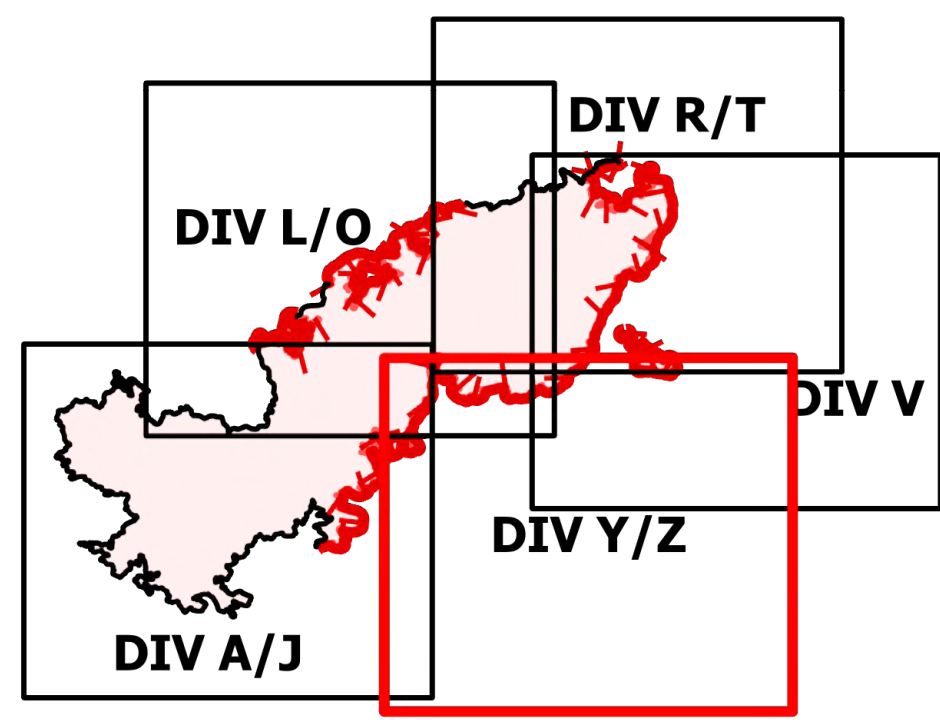
DIV Y/Z

Telegraph

AZ-TNF-1255

6/11/2021

86,529 acres at 6/10/2021 2058



- Structure
- Substations
- ▲ Campground
- Other
- Trailhead
- Dip Site
-) Division Break
- [Branch Break
- Drop Point
- ▲ Camp
- Value at Risk
- Gate
- Hazard
- Water Source
- IR Isolated Heat Source
- Completed Dozer Line
- M - M Completed Mixed Construction Line
- Fire Edge
- Contained Line
- IR Heat Perimeter
- IR Intense Heat
- IR Scattered Heat
- Wildfire Daily Fire Perimeter
- Local Connecting Road
- Local Road
- Tonto National Forest Roads
- Tonto National Forest Trails
- Road
- Trail
- Arizona Trail
- Transmission Lines
- Structure
- USFS Boundary
- County or Equivalent
- Township/Range
- Section
- Fire History
- BLM
- Indian Lands
- Private
- State
- USFS

