

OPERATIONS

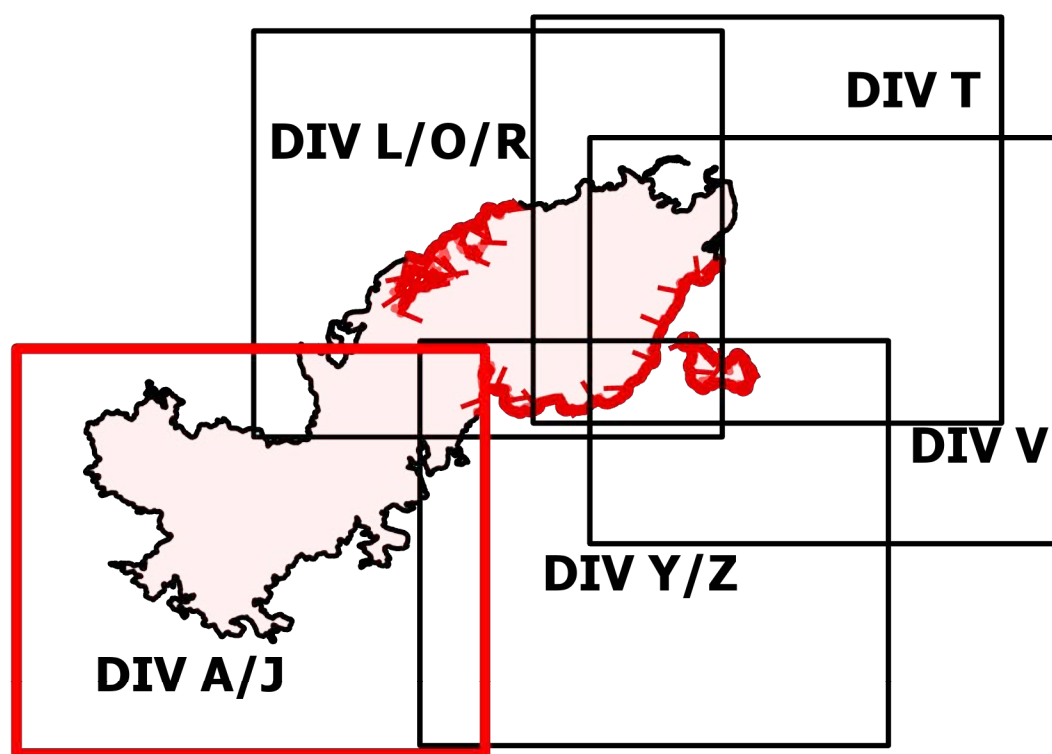
DIV A/J

Telegraph

AZ-TNF-1255

6/12/2021

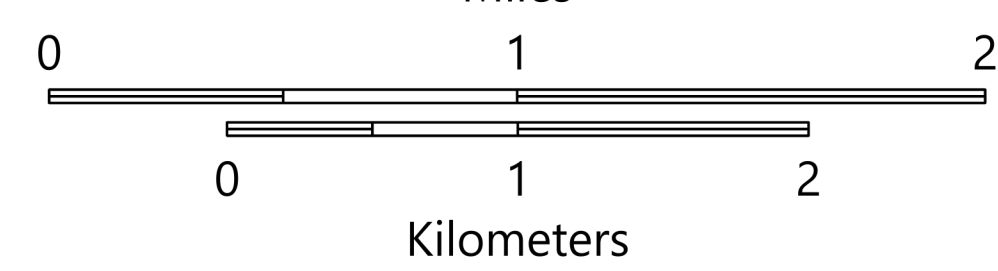
87,119 acres at 6/12/2021 1706



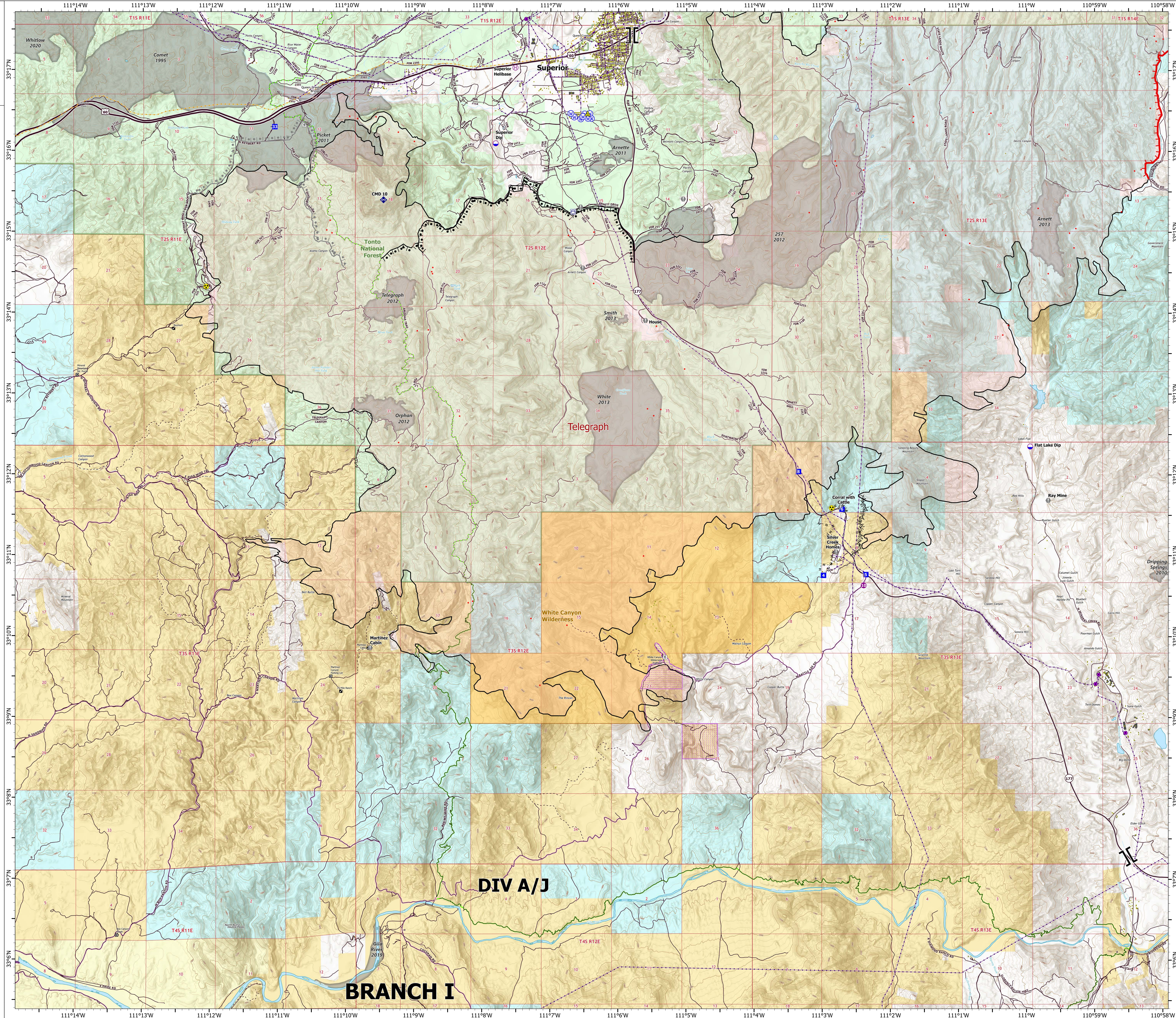
- Structure
- Substations
- ⊠ Trailhead
- ⊠ BLM Planned Portal Sites
- ⊠ Point of Interest
- ⊠ Trailhead
- ⊠ Dip Site
- ⊠ Helispot
- ⊠ Helibase
- ⊠ Branch Break
- ⊠ Drop Point
- ⊠ Value at Risk
- ⊠ Gate
- ⊠ Repeater
- ⊠ Safety Zone
- ⊠ Hazard
- ⊠ Water Source
- ⊠ Water Tank
- ⊠ IR Isolated Heat Source
- ⊠ Completed Burnout
- ⊠ Completed Fuel Break
- ⊠ Completed Hand Line
- ⊠ Planned Burnout
- ⊠ Planned Road as Line
- ⊠ Fire Edge
- ⊠ Contained Line
- ⊠ IR Heat Perimeter
- ⊠ Wildfire Daily Fire Perimeter
- ⊠ Highway or Major Connecting Road
- ⊠ Local Connecting Road
- ⊠ Local Road
- ⊠ Tonto National Forest Roads
- ⊠ Tonto National Forest Trails
- ⊠ Road
- ⊠ Trail
- ⊠ Arizona Trail
- ⊠ Middle Gila Access Route
- ⊠ Transmission Lines
- ⊠ Oil and Natural Gas Pipelines
- ⊠ APS Distribution Overhead Infrastructure
- ⊠ Structure
- ⊠ USFS Boundary
- ⊠ County or Equivalent
- ⊠ BLM Area of Critical Environmental Concern
- ⊠ Wilderness Area Boundary
- ⊠ Federal Land within Wilderness Area
- ⊠ Township/Range
- ⊠ Section
- ⊠ Fire History
- ⊠ BLM
- ⊠ BR
- ⊠ Private
- ⊠ State
- ⊠ USFS



Miles



Kilometers



OPERATIONS

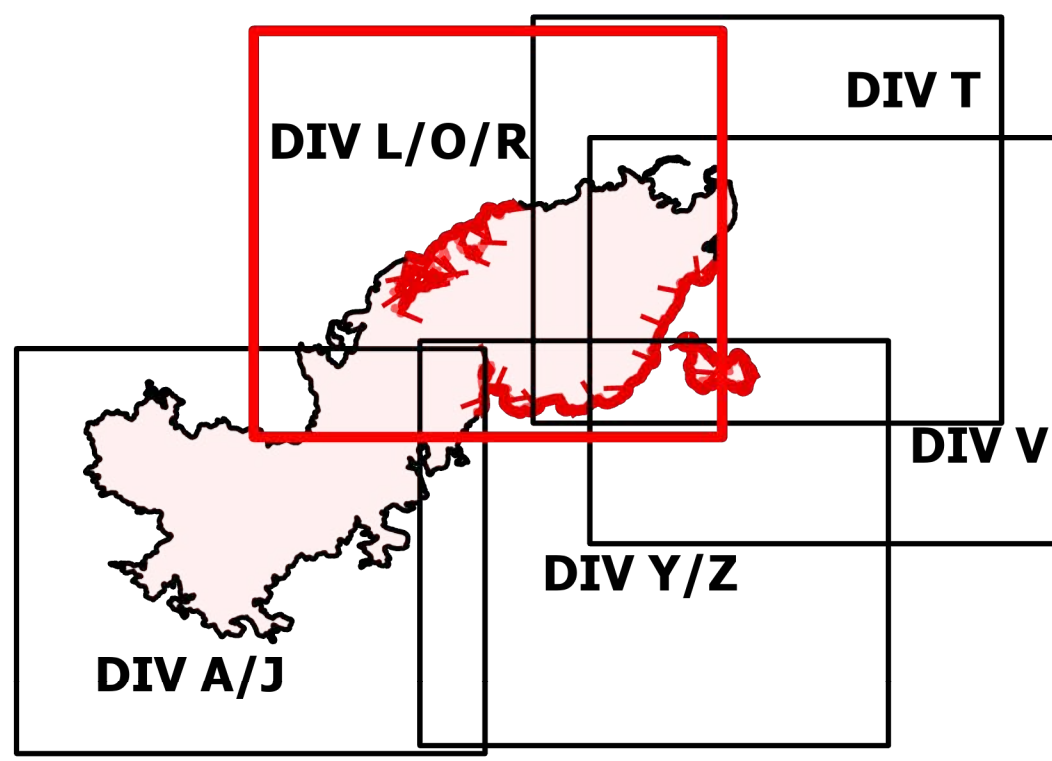
DIV L/O/R

Telegraph

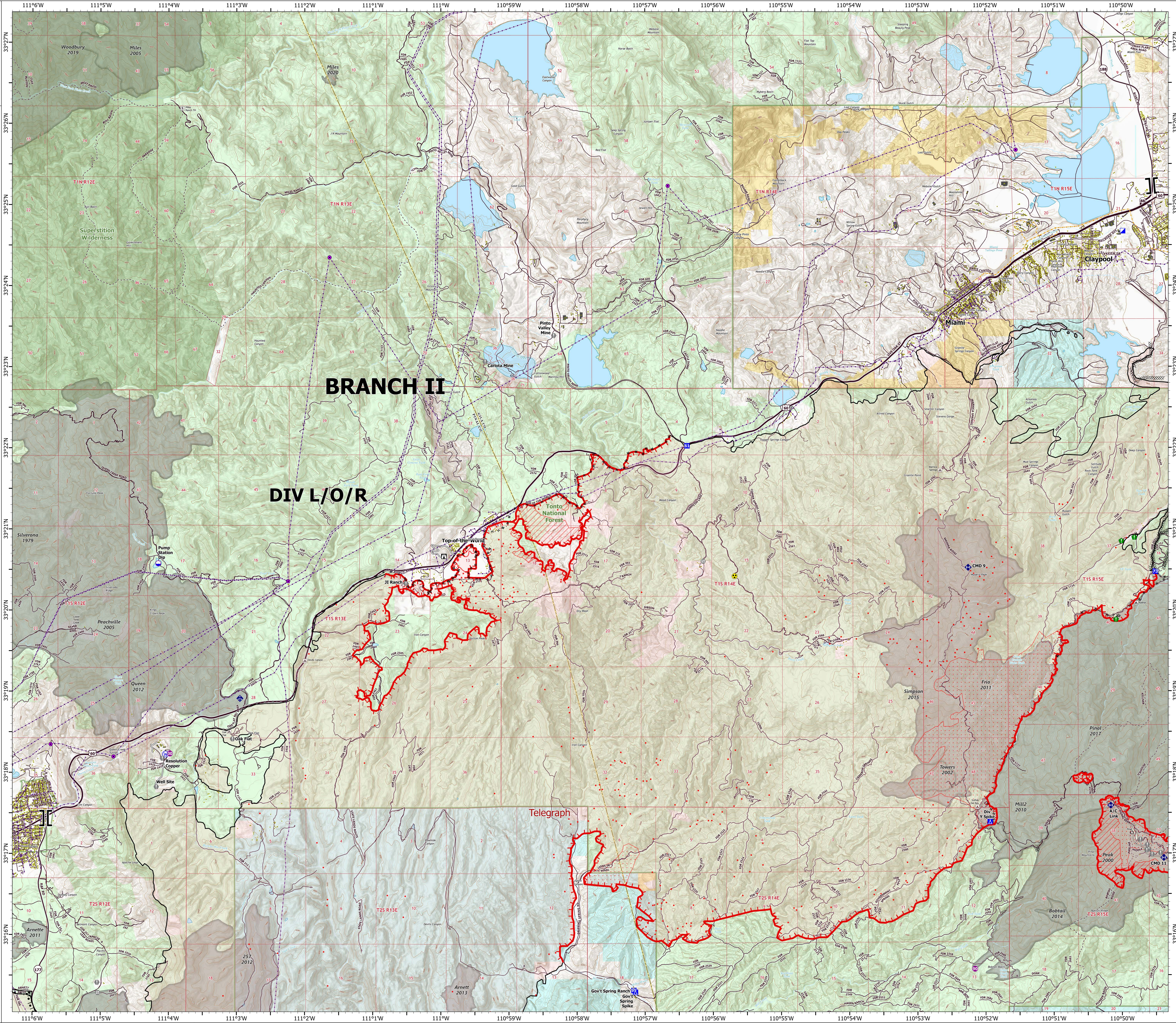
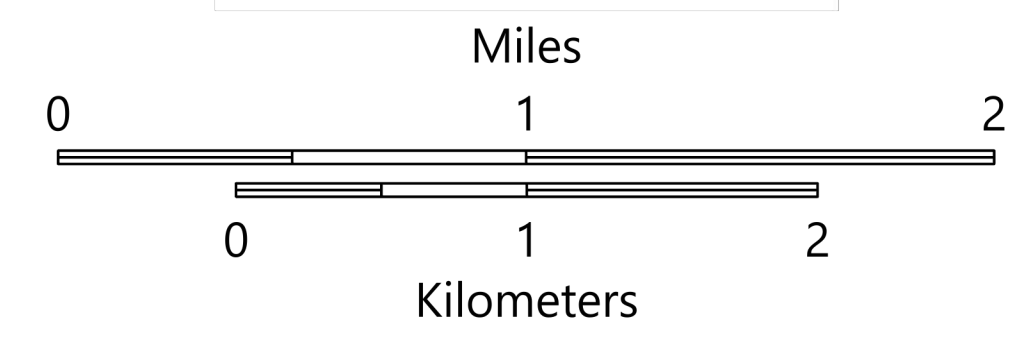
AZ-TNF-1255

6/12/2021

87,119 acres at 6/12/2021 1706



- Structure
- Substations
- ▲ Campground
- Recreation Residence
- ⊠ Trailhead
- Dip Site
- Helispot
- ⊠ Branch Break
- ⊠ Incident Command Post
- Drop Point
- Camp
- Lookout
- Value at Risk
- Landmark
- Gate
- Bridge
- Resource Location
- Mobile Weather Unit
- Repeater
- Hazard
- Water Source
- IR Isolated Heat Source
- Completed Burnout
- Completed Dozer Line
- Completed Hand Line
- Completed Mixed Construction Line
- Completed Road as Line
- Planned Road as Line
- Access or Improved Road
- Fire Edge
- Contained Line
- IR Heat Perimeter
- IR Intense Heat
- IR Scattered Heat
- Wildfire Daily Fire Perimeter
- Highway or Major Connecting Road
- Local Connecting Road
- Local Road
- Tonto National Forest Roads
- Tonto National Forest Trails
- Road
- Transmission Lines
- Oil and Natural Gas Pipelines
- APS Distribution Overhead Infrastructure
- Structure
- USFS Boundary
- County or Equivalent
- Township/Range
- Section
- Fire History
- USFS Wilderness Area
- BLM
- Private
- State
- USFS



OPERATIONS

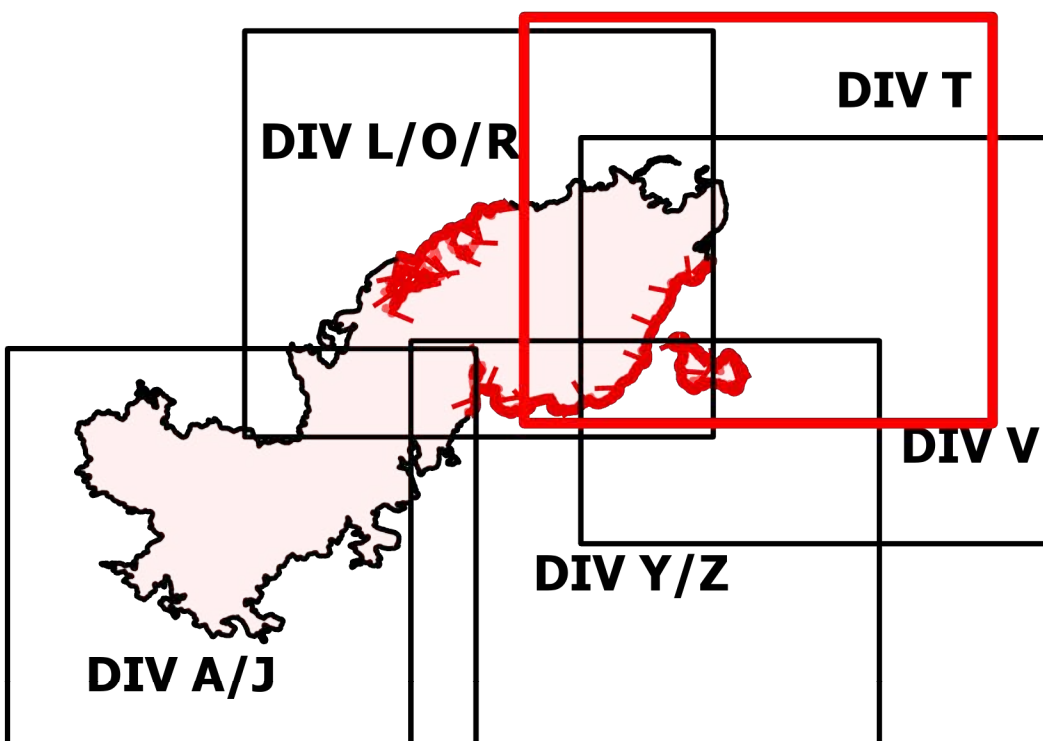
DIV T

Telegraph

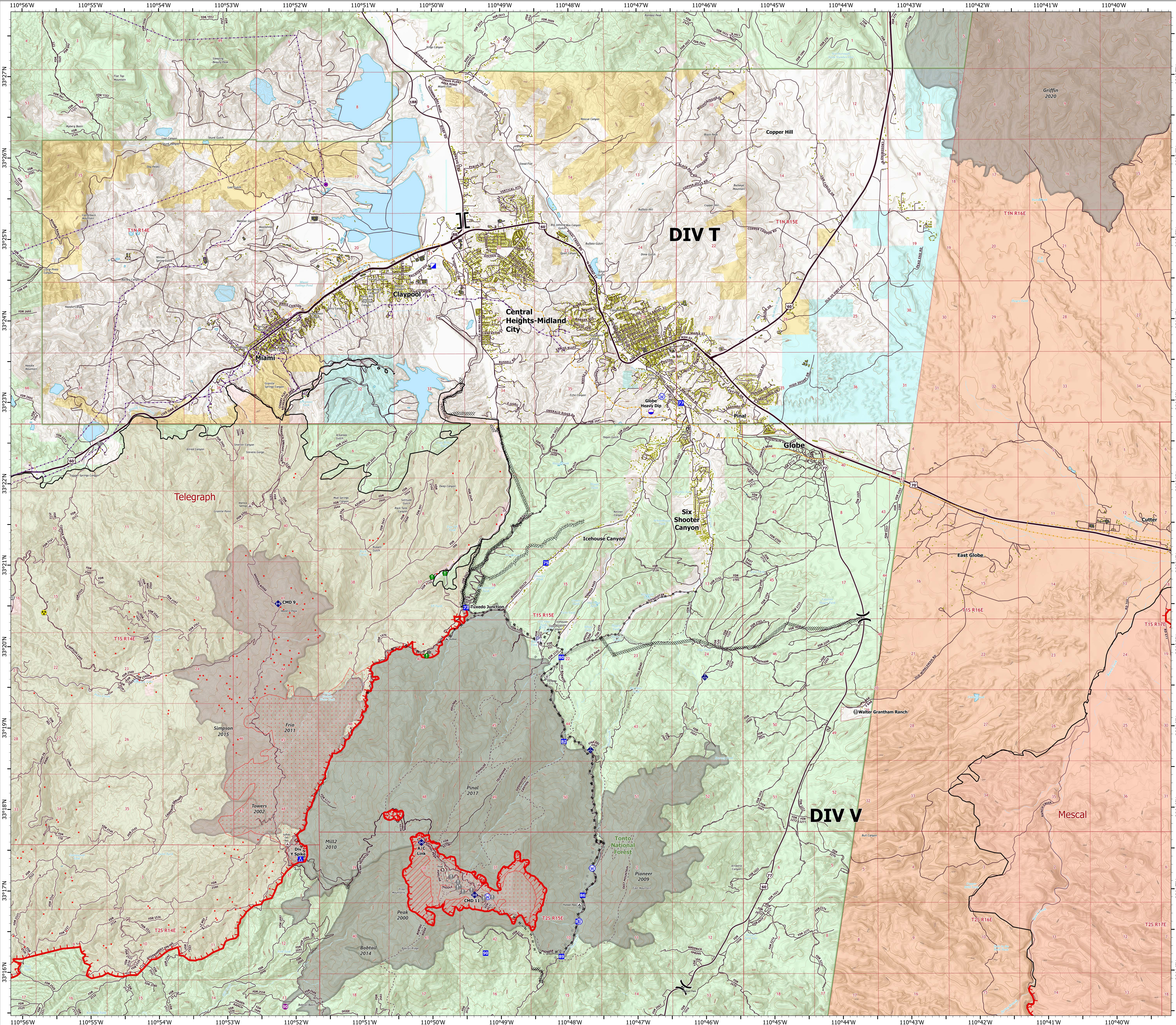
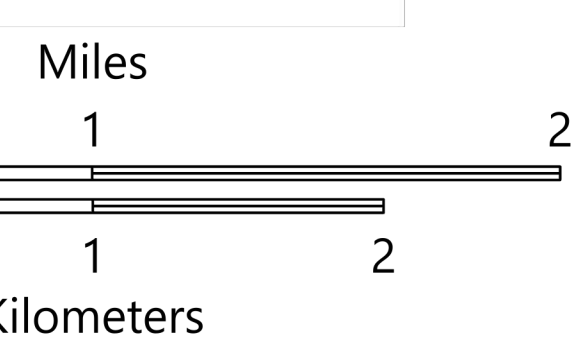
AZ-TNF-1255

6/12/2021

87,119 acres at 6/12/2021 1706



- Structure
- Substations
- ▲ Campground
- ▲ District Office
- ▲ Recreation Residence
- ⊠ Trailhead
- ⊠ Other
- Dip Site
- Helispot
- ⊠ Division Break
- ⊠ Branch Break
- ▲ Incident Command Post
- ▲ Drop Point
- ▲ Camp
- Value at Risk
- Landmark
- Gate
- Bridge
- Resource Location
- Mobile Weather Unit
- Repeater
- Hazard
- Water Source
- Pump
- IR Isolated Heat Source
- Completed Dozer Line
- Completed Hand Line
- Completed Mixed Construction Line
- Completed Road as Line
- Planned Dozer Line
- Planned Mixed Construction Line
- Planned Road as Line
- Fire Edge
- Contained Line
- IR Heat Perimeter
- IR Intense Heat
- IR Scattered Heat
- Wildfire Daily Fire Perimeter
- Highway or Major Connecting Road
- Local Connecting Road
- Local Road
- Tonto National Forest Roads
- Tonto National Forest Trails
- Road
- Transmission Lines
- Oil and Natural Gas Pipelines
- APS Distribution Overhead Infrastructure
- Structure
- USFS Boundary
- County or Equivalent
- Township/Range
- Section
- Fire History
- BLM
- Indian Lands
- Private
- State
- USFS



OPERATIONS

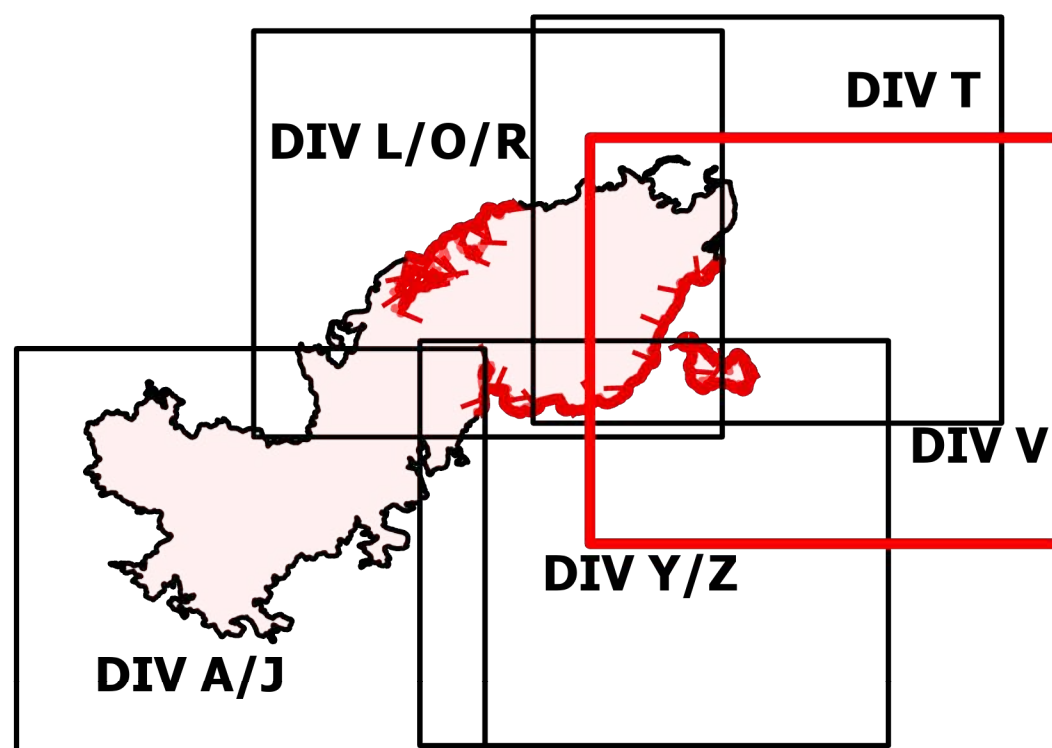
DIV V

Telegraph

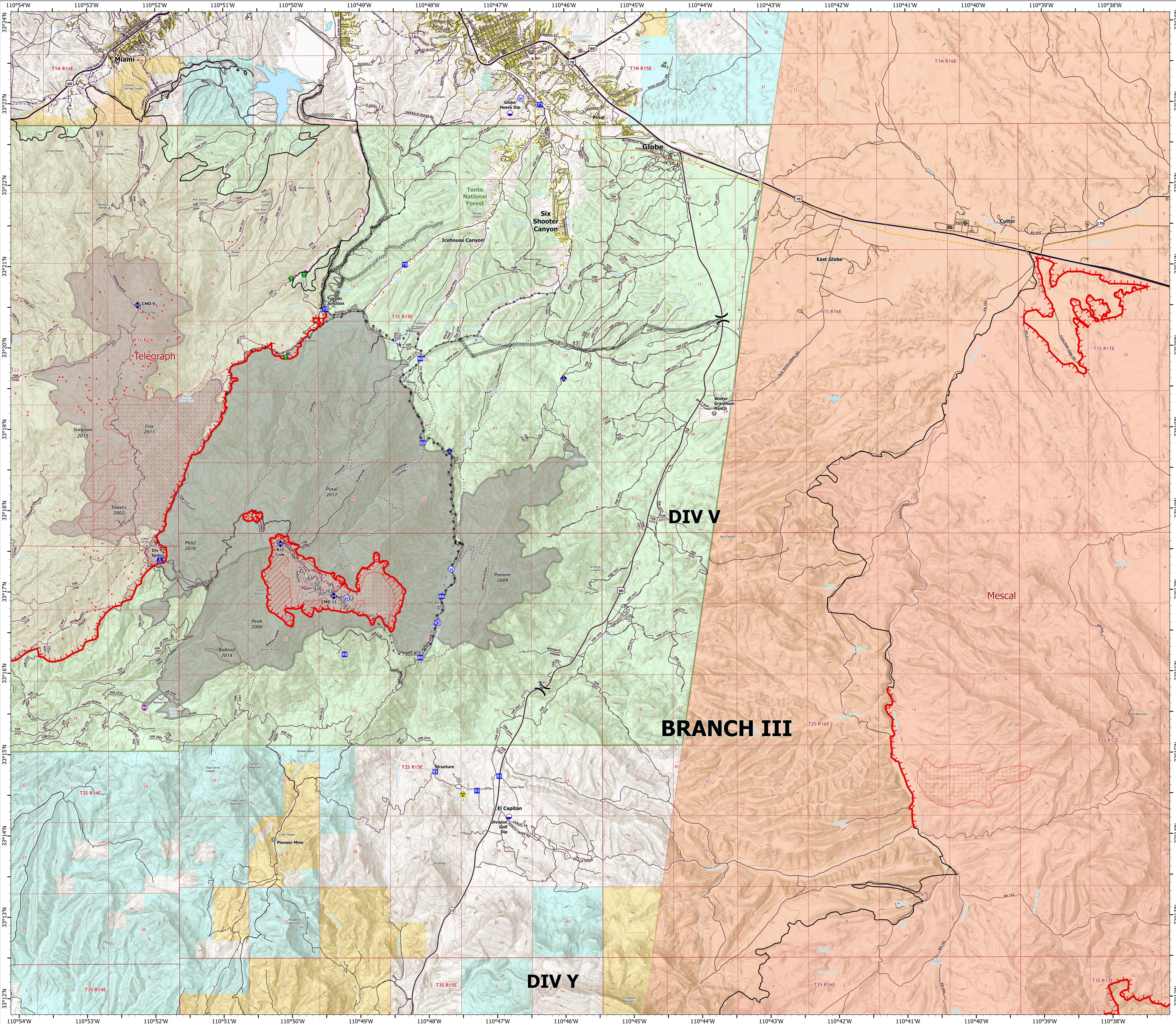
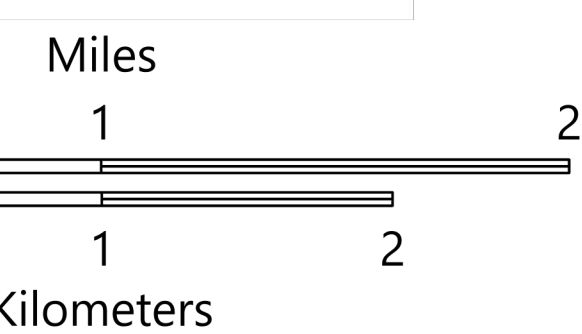
AZ-TNF-1255

6/12/2021

87,119 acres at 6/12/2021 1706



- Structure
- ▲ Campground
- District Office
- Recreation Residence
- Trailhead
- Other
- Dip Site
- Hellsport
- Division Break
- Drop Point
- Camp
- Value at Risk
- Landmark
- Gate
- Bridge
- Resource Location
- Mobile Weather Unit
- Repeater
- Hazard
- Water Source
- Pump
- IR Isolated Heat Source
- Completed Dozer Line
- Completed Hand Line
- Completed Mixed Construction Line
- Completed Road as Line
- Planned Dozer Line
- Planned Mixed Construction Line
- Planned Road as Line
- Fire Edge
- Contained Line
- IR Heat Perimeter
- IR Intense Heat
- IR Scattered Heat
- Wildfire Daily Fire Perimeter
- Highway or Major Connecting Road
- Local Connecting Road
- Local Road
- Tonto National Forest Roads
- Tonto National Forest Trails
- Road
- Oil and Natural Gas Pipelines
- APS Distribution Overhead Infrastructure
- Structure
- USFS Boundary
- County or Equivalent
- Township/Range
- Section
- Fire History
- BLM
- Indian Lands
- Private
- State
- USFS



OPERATIONS

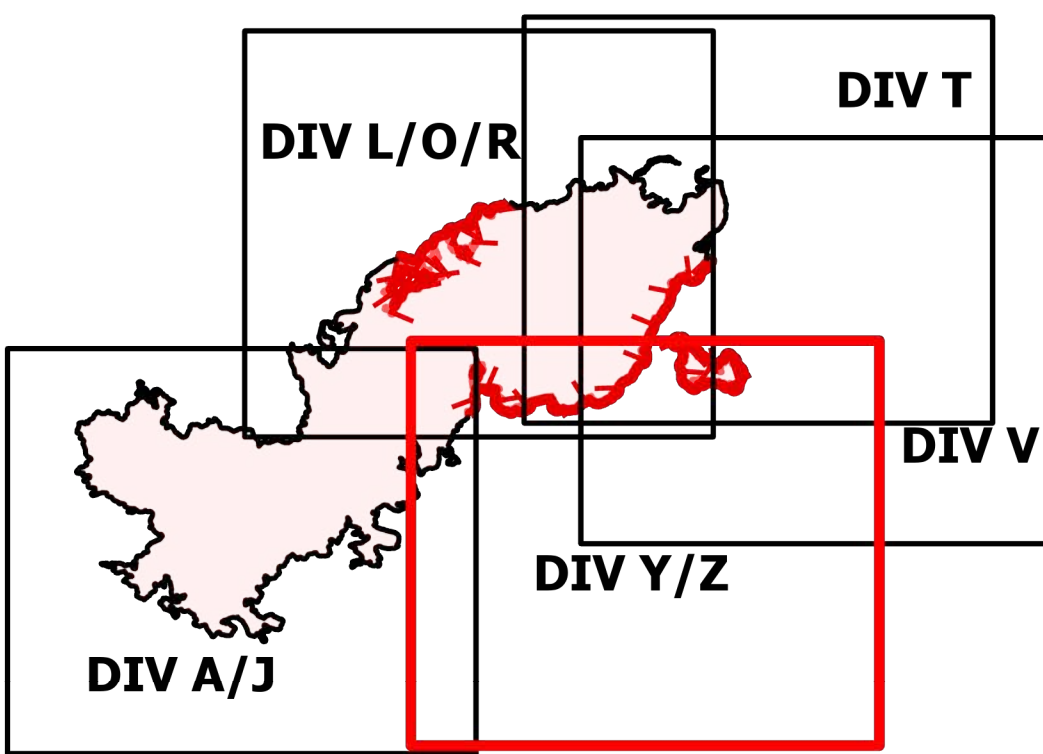
DIV Y/Z

Telegraph

AZ-TNF-1255

6/12/2021

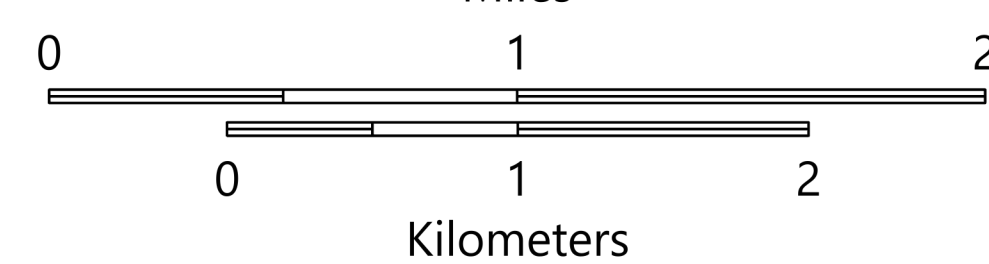
87,119 acres at 6/12/2021 1706



- Structure
- Substations
- ▲ Campground
- Ⓜ Recreation Residence
- Ⓜ Other
- Ⓜ Trailhead
- Dip Site
- Hellsipit
- Ⓜ Division Break
- Ⓜ Branch Break
- Drop Point
- Ⓜ Camp
- Value at Risk
- Ⓜ Gate
- Ⓜ Repeater
- Ⓜ Hazard
- Ⓜ Water Source
- IR Isolated Heat Source
- Ⓜ Completed Dozer Line
- Ⓜ Completed Hand Line
- Ⓜ Completed Mixed Construction Line
- Ⓜ Planned Mixed Construction Line
- Fire Edge
- Contained Line
- IR Heat Perimeter
- IR Intense Heat
- IR Scattered Heat
- Wildfire Daily Fire Perimeter
- Local Connecting Road
- Local Road
- Tonto National Forest Roads
- Tonto National Forest Trails
- Road
- Trail
- Arizona Trail
- Transmission Lines
- APS Distribution Overhead Infrastructure
- Structure
- USFS Boundary
- County or Equivalent
- BLM Area of Critical Environmental Concern
- Township/Range
- Section
- Fire History
- BLM
- Indian Lands
- Private
- State
- USFS



Miles



Kilometers

