

OPERATIONS

Branch I Telegraph

AZ-TNF-1255

6/12/2021

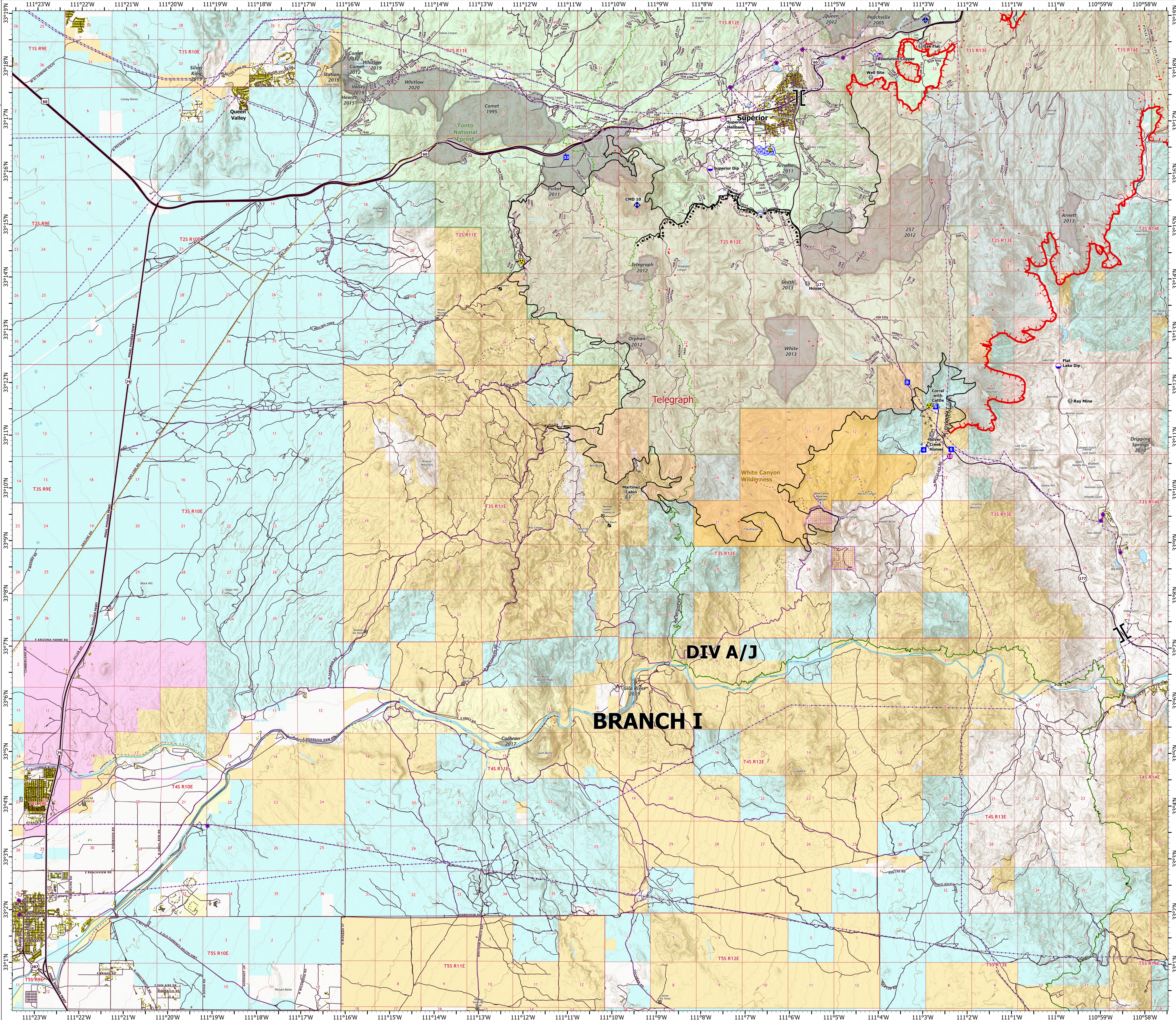
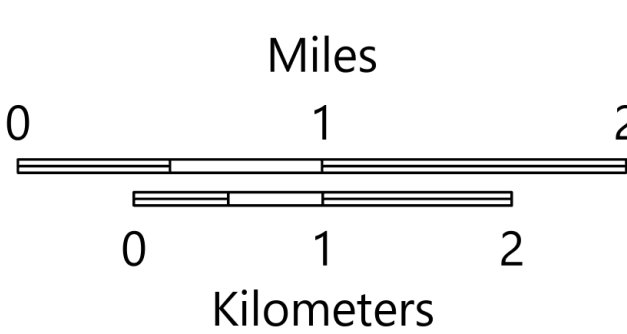
87,078 acres at 6/11/2021 2112

Branch II

Branch I

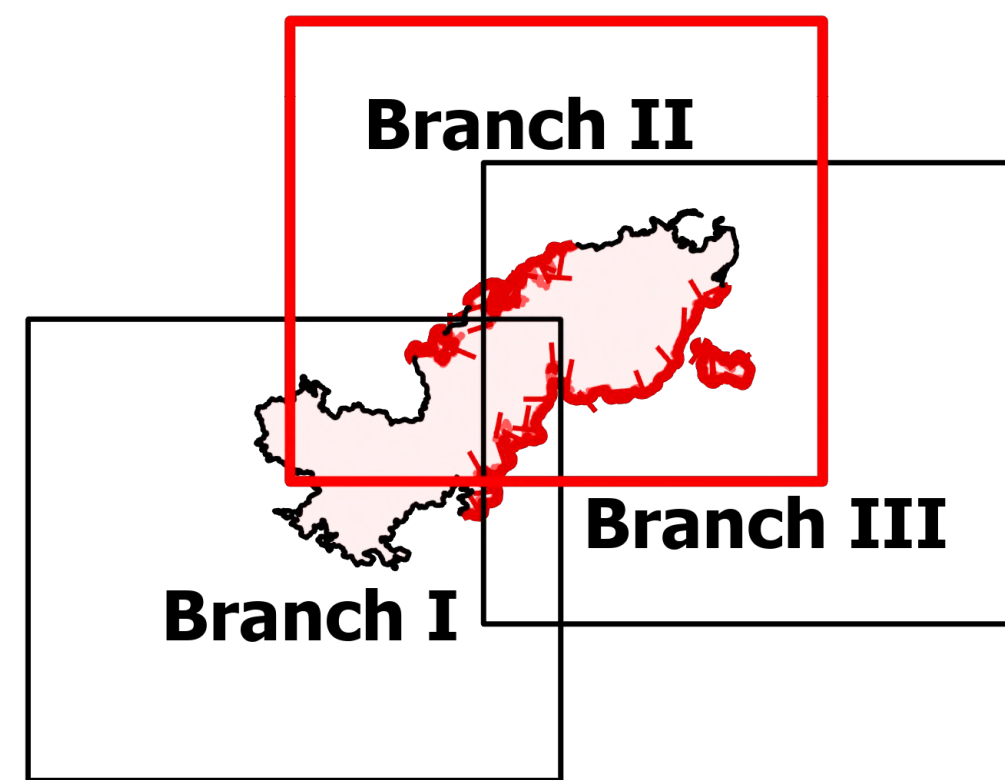
Branch III

- Structure
- Substations
- ▲ Campground
- ⊗ Trailhead
- ⊠ BLM Planned Portal Sites
- ⊙ Point of Interest
- ⊗ Trailhead
- Dip Site
- Heliport
- Heliport
- ⊠ Branch Break
- Drop Point
- Value at Risk
- Gate
- Mobile Weather Unit
- Repeater
- Safety Zone
- Hazard
- Water Source
- Water Tank
- IR Isolated Heat Source
- Completed Burnout
- Completed Fuel Break
- Completed Hand Line
- Access or Improved Road
- Fire Edge
- Contained Line
- IR Heat Perimeter
- IR Scattered Heat
- Wildfire Daily Fire Perimeter
- Highway or Major Connecting Road
- Local Connecting Road
- Local Road
- Tonto National Forest Roads
- Tonto National Forest Trails
- Road
- Trail
- Arizona Trail
- Middle Gila Access Route
- Transmission Lines
- APS Distribution Overhead Infrastructure
- Oil and Natural Gas Pipelines
- Structure
- USFS Boundary
- County or Equivalent
- BLM Area of Critical Environmental Concern
- Wilderness Area Boundary
- Federal Land within Wilderness Area
- Township/Range
- Section
- Fire History
- BLM
- BR
- County
- Local or State Parks
- Military
- Other
- Private
- State
- USFS

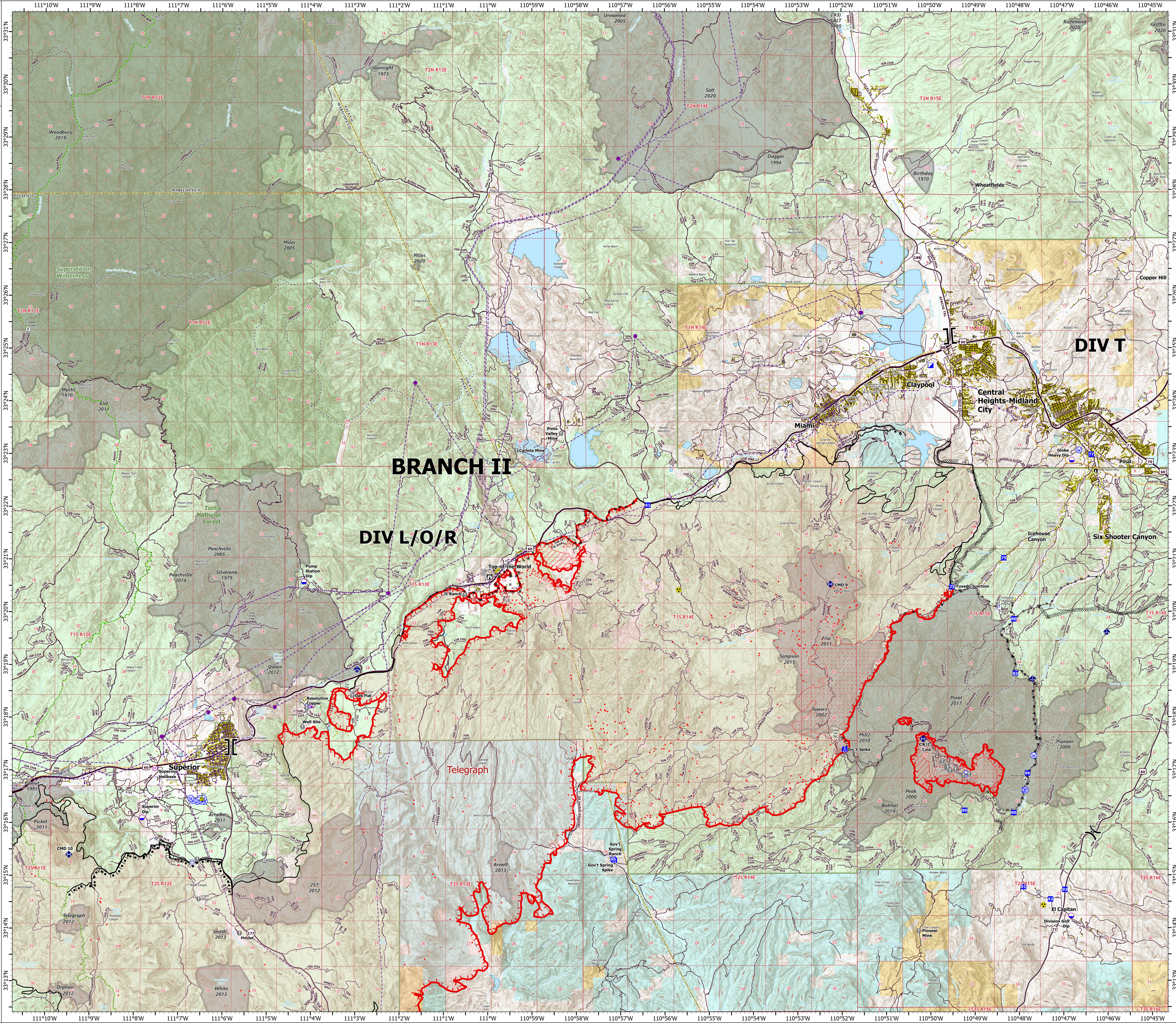
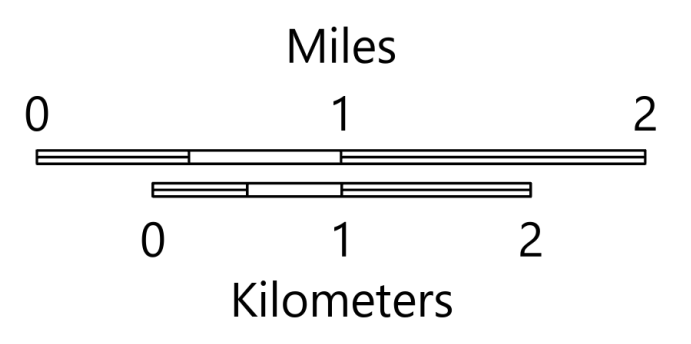


OPERATIONS

Branch II
Telegraph
AZ-TNF-1255
6/12/2021
87,078 acres at 6/11/2021 2112



- Structure
- Substations
- ▲ Campground
- ▲ District Office
- ▲ Recreation Residence
- ⊠ Trailhead
- ⊠ Other
- Dip Site
- Helispot
- ⊠ Helibase
- ⊠ Division Break
- ⊠ Branch Break
- ⊠ Incident Command Post
- ⊠ Drop Point
- ⊠ Camp
- ⊠ Lookout
- ⊠ Value at Risk
- ⊠ Landmark
- ⊠ Gate
- ⊠ Bridge
- ⊠ Mobile Weather Unit
- ⊠ Repeater
- ⊠ Safety Zone
- ⊠ Hazard
- ⊠ Water Source
- ⊠ Pump
- ⊠ Water Tank
- ⊠ IR Isolated Heat Source
- ⊠ Completed Burnout
- ⊠ Completed Dozer Line
- ⊠ Completed Hand Line
- ⊠ Completed Mixed Construction Line
- ⊠ Completed Road as Line
- ⊠ Access or Improved Road
- ⊠ Fire Edge
- ⊠ Contained Line
- ⊠ IR Heat Perimeter
- ⊠ IR Intense Heat
- ⊠ IR Scattered Heat
- ⊠ Wildfire Daily Fire Perimeter
- ⊠ Highway or Major Connecting Road
- ⊠ Local Connecting Road
- ⊠ Local Road
- ⊠ Tonto National Forest Roads
- ⊠ Tonto National Forest Trails
- ⊠ Road
- ⊠ Arizona Trail
- ⊠ Transmission Lines
- ⊠ APS Distribution Overhead Infrastructure
- ⊠ Oil and Natural Gas Pipelines
- ⊠ Structure
- ⊠ USFS Boundary
- ⊠ County or Equivalent
- ⊠ Township/Range
- ⊠ Section
- ⊠ Fire History
- ⊠ USFS Wilderness Area
- ⊠ BLM
- ⊠ Indian Lands
- ⊠ Private
- ⊠ State
- ⊠ USFS



BRANCH II

DIV L/O/R

DIV T

Telegraph

OPERATIONS

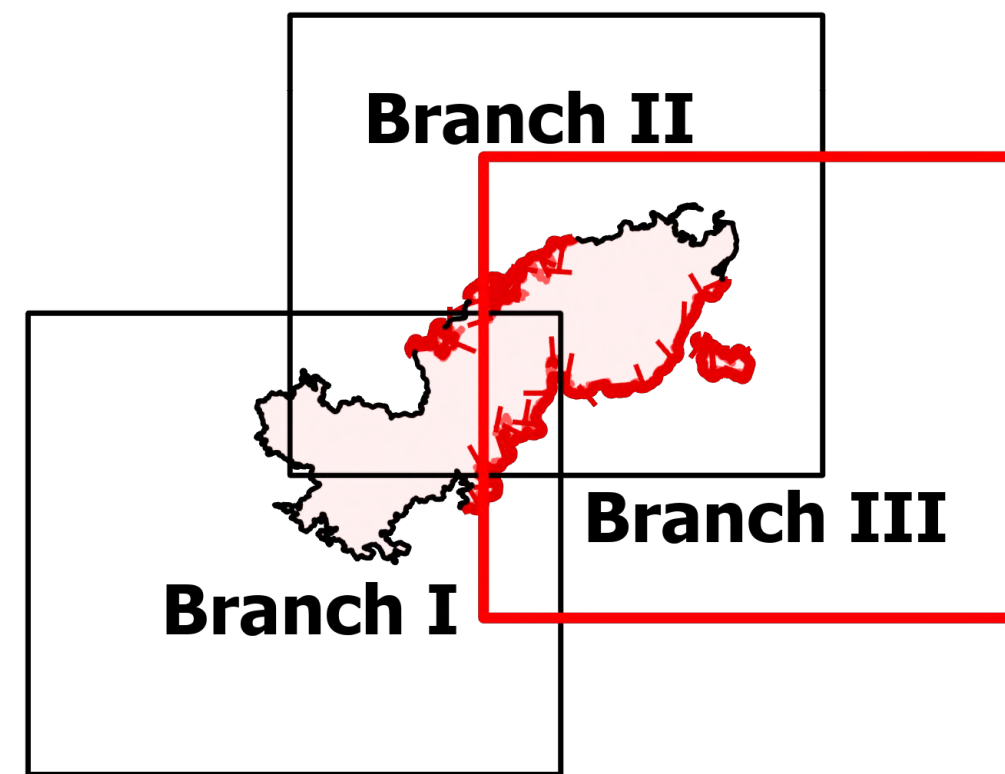
Branch III

Telegraph

AZ-TNF-1255

6/12/2021

87,078 acres at 6/11/2021 2112



- Structure
- Substations
- ▲ Campground
- District Office
- Recreation Residence
- ⊗ Trailhead
- ⊗ Other
- ⊗ Trailhead
- ⊗ Dip Site
- ⊗ Division Break
- ⊗ Branch Break
- ⊗ Incident Command Post
- ⊗ Drop Point
- ⊗ Camp
- ⊗ Lookout
- ⊗ Value at Risk
- ⊗ Landmark
- ⊗ Gate
- ⊗ Bridge
- ⊗ Mobile Weather Unit
- ⊗ Repeater
- ⊗ Hazard
- ⊗ Water Source
- ⊗ Pump
- ⊗ IR Isolated Heat Source
- ⊗ Completed Dozer Line
- ⊗ Completed Hand Line
- ⊗ Completed Mixed Construction Line
- ⊗ Completed Road as Line
- ⊗ Access or Improved Road
- ⊗ Fire Edge
- ⊗ Contained Line
- ⊗ IR Heat Perimeter
- ⊗ IR Intense Heat
- ⊗ IR Scattered Heat
- ⊗ Wildfire Daily Fire Perimeter
- ⊗ Highway or Major Connecting Road
- ⊗ Local Connecting Road
- ⊗ Local Road
- ⊗ Tonto National Forest Roads
- ⊗ Road
- ⊗ Arizona Trail
- ⊗ Transmission Lines
- ⊗ APS Distribution Overhead Infrastructure
- ⊗ Oil and Natural Gas Pipelines
- ⊗ Structure
- ⊗ USFS Boundary
- ⊗ County or Equivalent
- ⊗ BLM Area of Critical Environmental Concern
- ⊗ Wilderness Area Boundary
- ⊗ Federal Land within Wilderness Area
- ⊗ Township/Range
- ⊗ Section
- ⊗ Fire History
- ⊗ BLM
- ⊗ Indian Lands
- ⊗ Private
- ⊗ State
- ⊗ USFS

