

# OPERATIONS

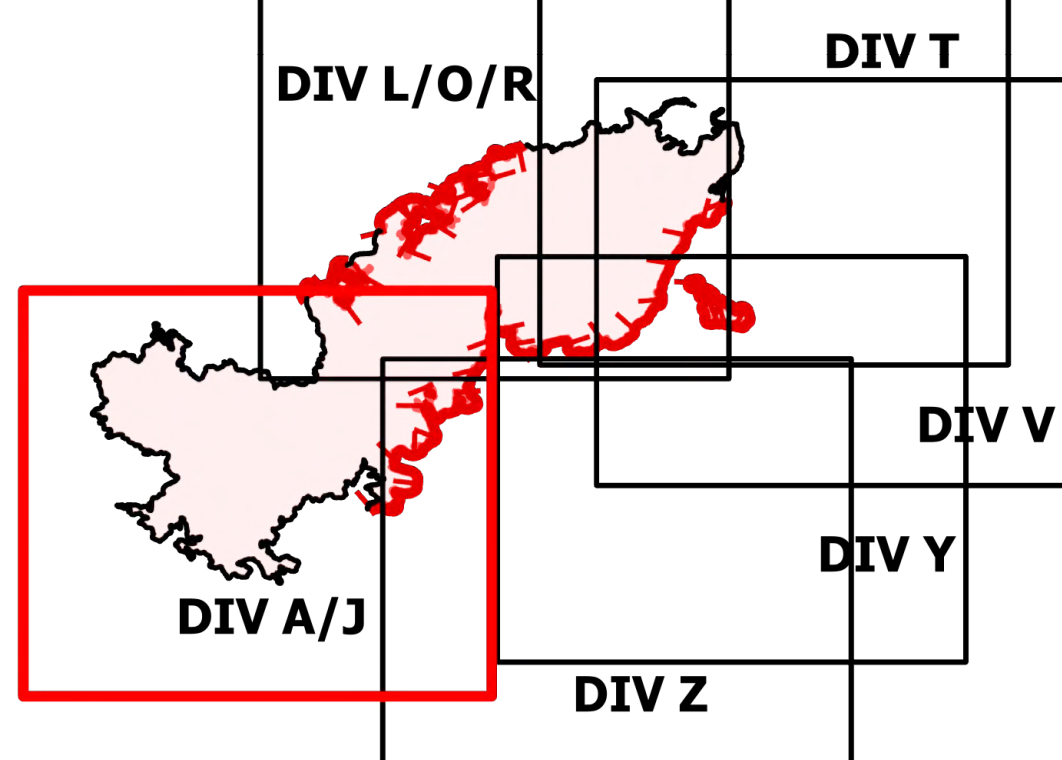
DIV A/J

Telegraph

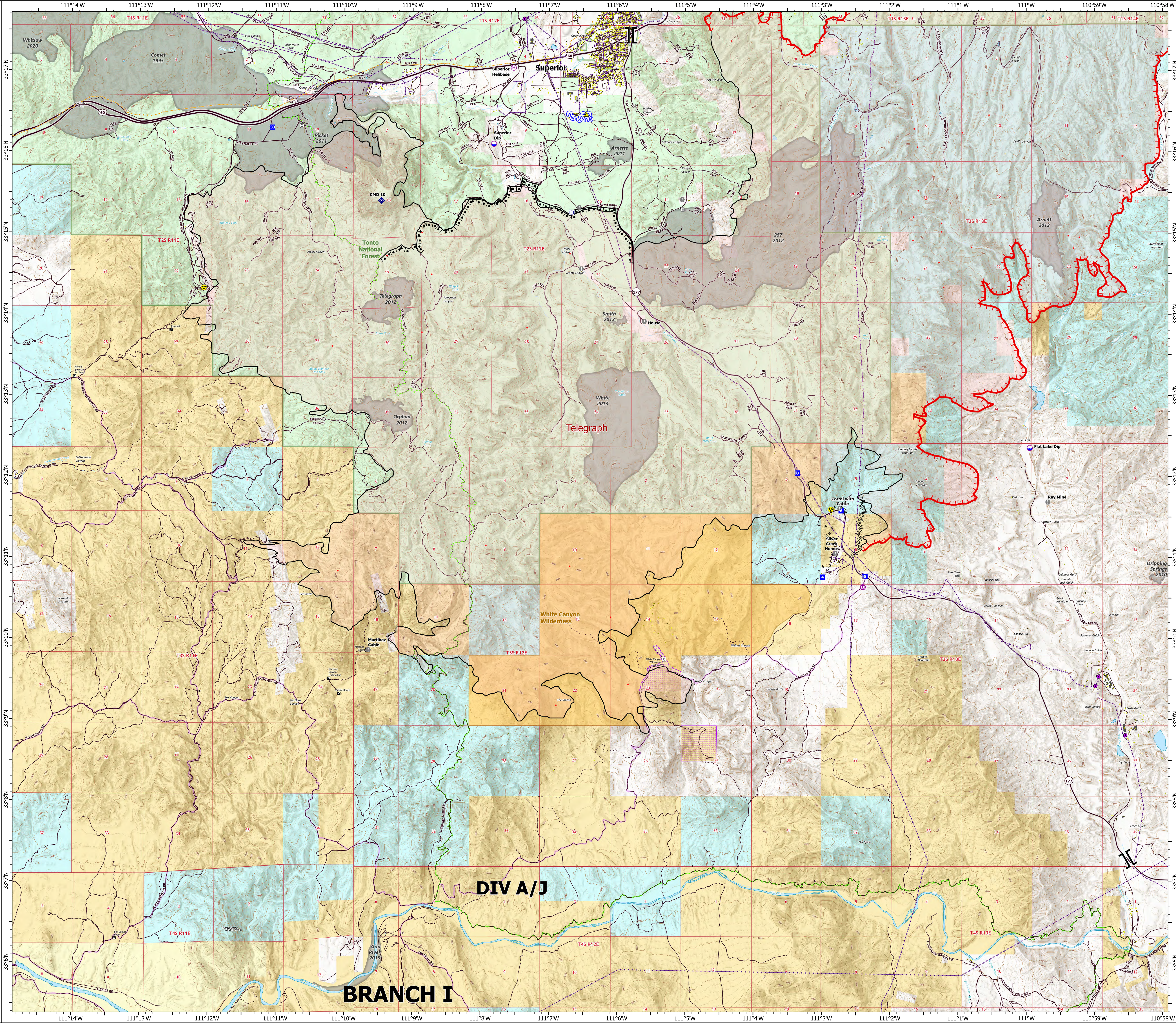
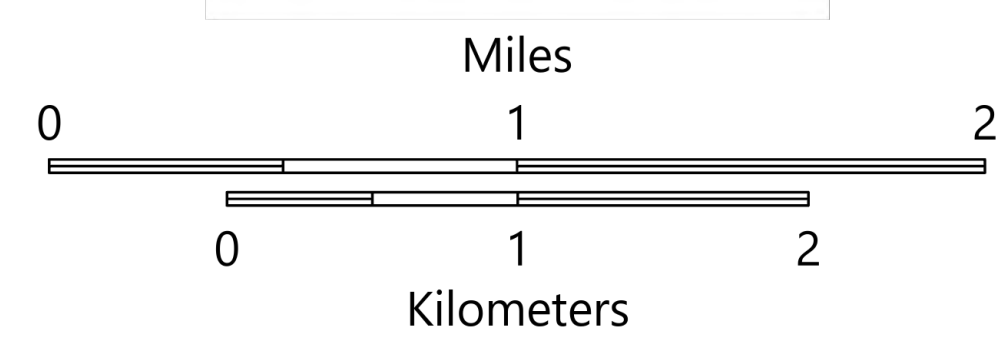
AZ-TNF-1255

6/12/2021

86,529 acres at 6/10/2021 2058



- Structure
- Substations
- ⊠ Trailhead
- ⊠ BLM Planned Portal Sites
- ⊠ Point of Interest
- ⊠ Trailhead
- Dip Site
- Helispot
- Helibase
- ⊠ Branch Break
- Drop Point
- Value at Risk
- Gate
- Repeater
- ▲ Safety Zone
- ▲ Hazard
- Water Source
- Water Tank
- IR Isolated Heat Source
- Completed Burnout
- Completed Fuel Break
- Completed Hand Line
- Fire Edge
- Contained Line
- IR Heat Perimeter
- Wildfire Daily Fire Perimeter
- Highway or Major Connecting Road
- Local Connecting Road
- Local Road
- Tonto National Forest Roads
- Tonto National Forest Trails
- Road
- Trail
- Arizona Trail
- Middle Gila Access Route
- Transmission Lines
- Oil and Natural Gas Pipelines
- APS Distribution Overhead Infrastructure
- Structure
- USFS Boundary
- County or Equivalent
- BLM Area of Critical Environmental Concern
- Wilderness Area Boundary
- Federal Land within Wilderness Area
- Township/Range
- Section
- Fire History
- BLM
- BR
- Private
- State
- USFS



DIV A/J

BRANCH I

# OPERATIONS

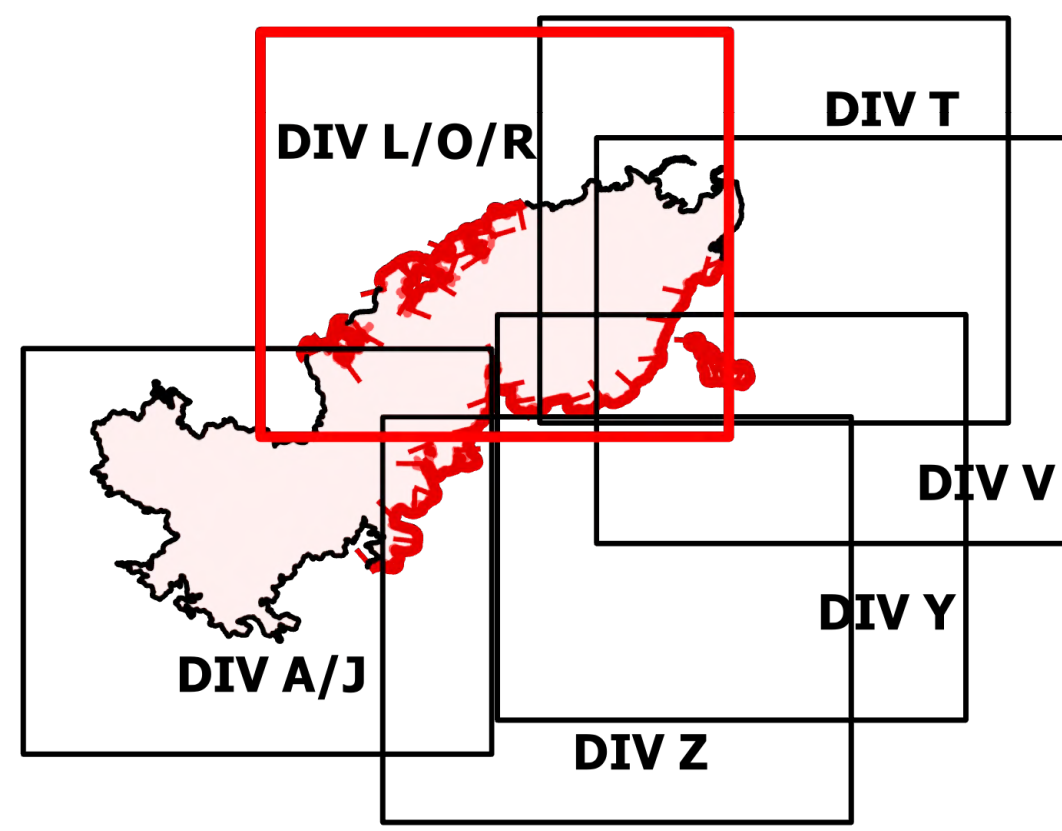
## DIV L/O/R

### Telegraph

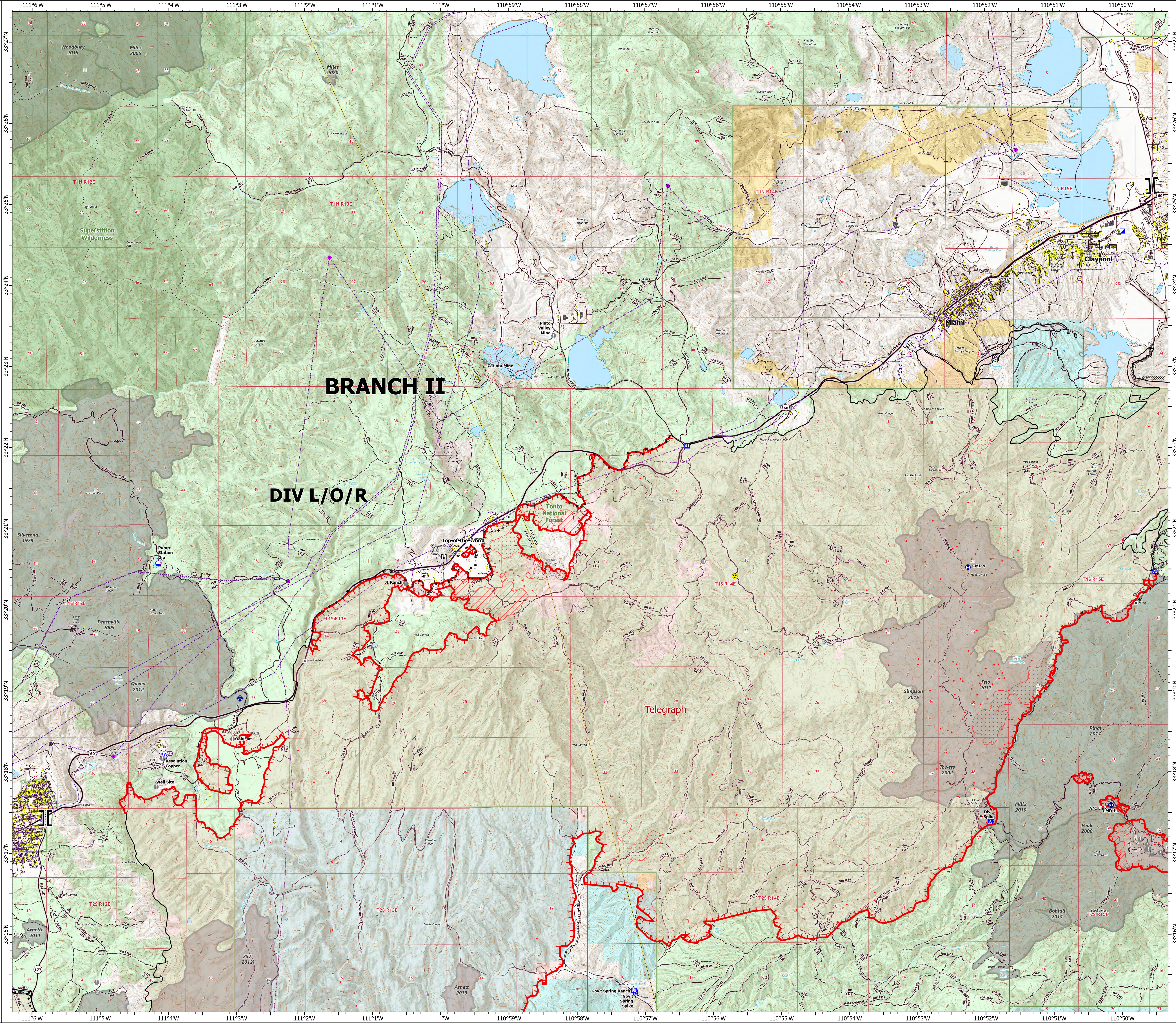
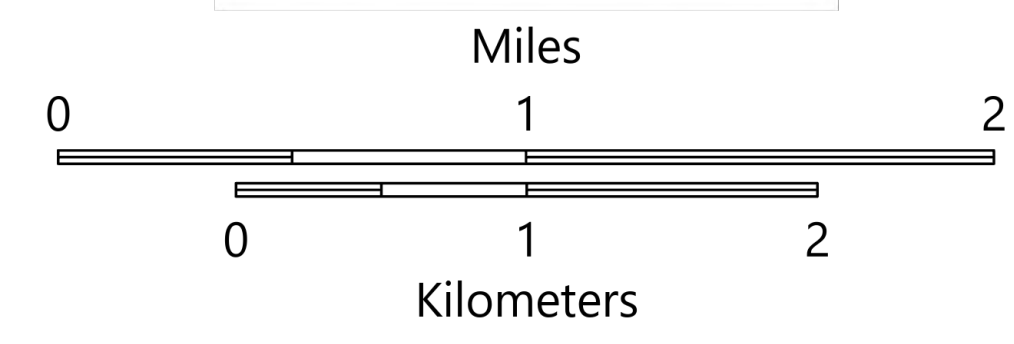
#### AZ-TNF-1255

#### 6/12/2021

#### 86,529 acres at 6/10/2021 2058



- Structure
- Substations
- ▲ Campground
- Recreation Residence
- ⊠ Trailhead
- Dip Site
- Hellsport
- ⌋ Branch Break
- Incident Command Post
- Drop Point
- Camp
- Lookout
- Value at Risk
- Landmark
- Gate
- Bridge
- ◆ Mobile Weather Unit
- ◆ Repeater
- ⚠ Hazard
- Water Source
- IR Isolated Heat Source
- ⊠ Completed Burnout
- ⊠ Completed Dozer Line
- ⊠ Completed Hand Line
- ⊠ Completed Mixed Construction Line
- ⊠ Completed Road as Line
- ⊠ Access or Improved Road
- ⊠ Fire Edge
- ⊠ Contained Line
- ⊠ IR Heat Perimeter
- ⊠ IR Intense Heat
- ⊠ IR Scattered Heat
- ⊠ Wildfire Daily Fire Perimeter
- ⊠ Highway or Major Connecting Road
- ⊠ Local Connecting Road
- ⊠ Local Road
- ⊠ Tonto National Forest Roads
- ⊠ Tonto National Forest Trails
- ⊠ Road
- ⊠ Transmission Lines
- ⊠ Oil and Natural Gas Pipelines
- ⊠ APS Distribution Overhead Infrastructure
- Structure
- USFS Boundary
- County or Equivalent
- Township/Range
- Section
- Fire History
- USFS Wilderness Area
- BLM
- Private
- State
- USFS



# OPERATIONS

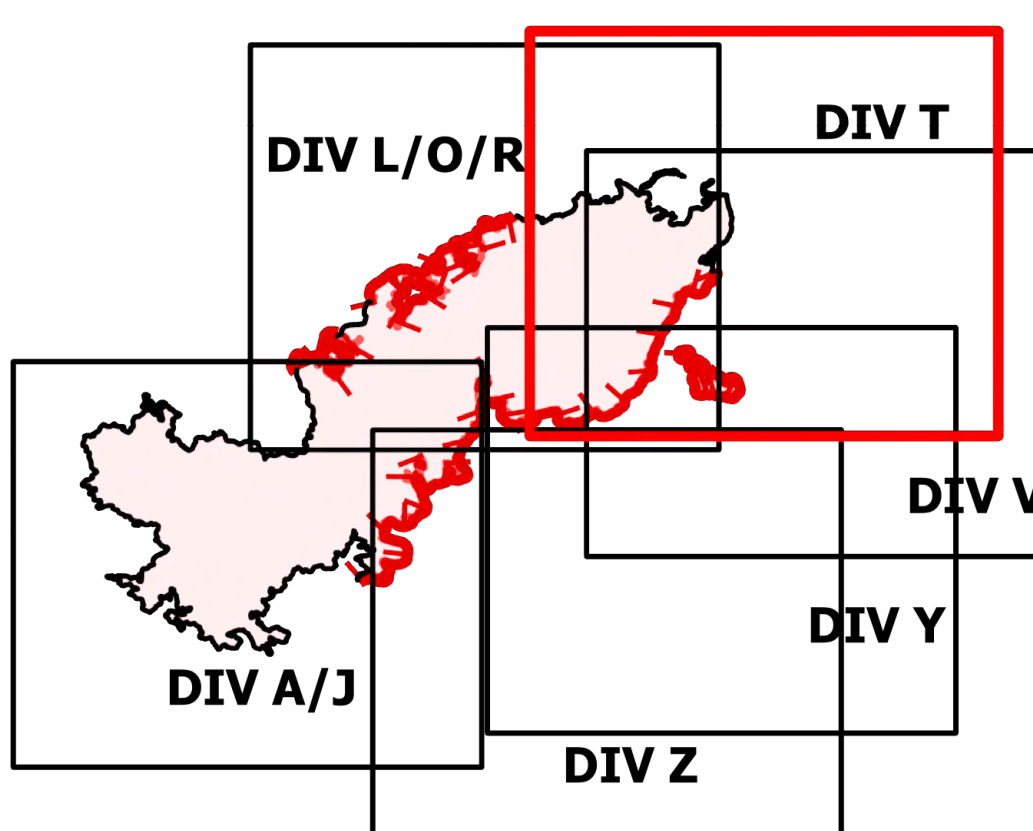
DIV T

Telegraph

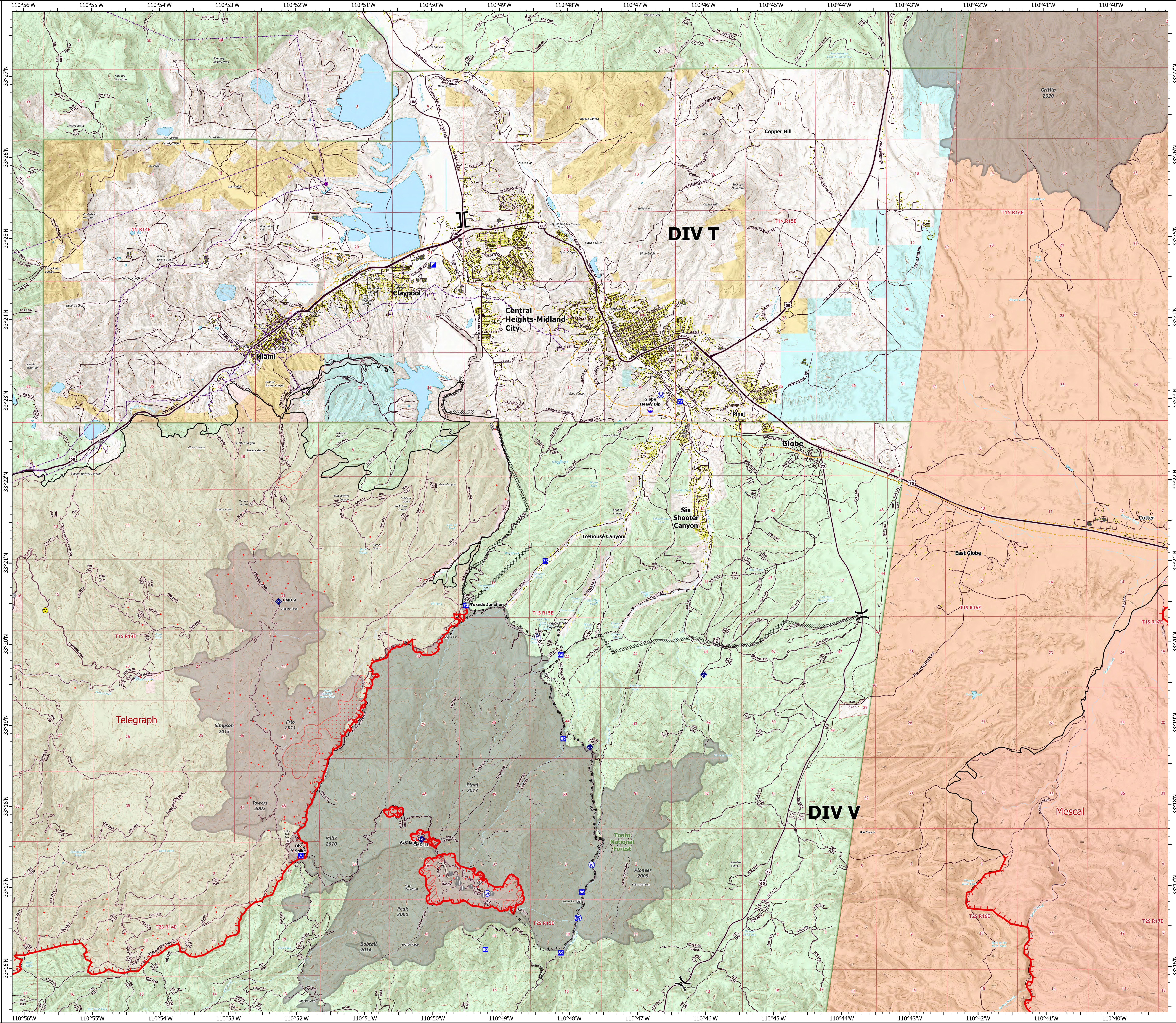
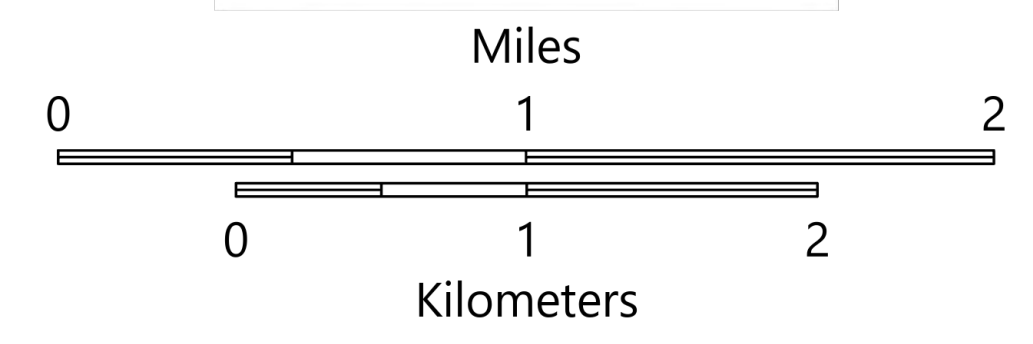
AZ-TNF-1255

6/12/2021

86,529 acres at 6/10/2021 2058



- Structure
- Substations
- ▲ Campground
- District Office
- Recreation Residence
- Trailhead
- Other
- Dip Site
- X Division Break
- II Branch Break
- Incident Command Post
- Drop Point
- Camp
- Value at Risk
- Landmark
- Gate
- Bridge
- ◆ Mobile Weather Unit
- ◆ Repeater
- ◆ Hazard
- Water Source
- Pump
- IR Isolated Heat Source
- Completed Dozer Line
- Completed Hand Line
- Completed Mixed Construction Line
- Completed Road as Line
- Fire Edge
- Contained Line
- IR Heat Perimeter
- IR Intense Heat
- IR Scattered Heat
- Wildfire Daily Fire Perimeter
- Highway or Major Connecting Road
- Local Connecting Road
- Local Road
- Tonto National Forest Roads
- Tonto National Forest Trails
- Road
- Transmission Lines
- Oil and Natural Gas Pipelines
- APS Distribution Overhead Infrastructure
- Structure
- USFS Boundary
- County or Equivalent
- Township/Range
- Section
- Fire History
- BLM
- Indian Lands
- Private
- State
- USFS



# OPERATIONS

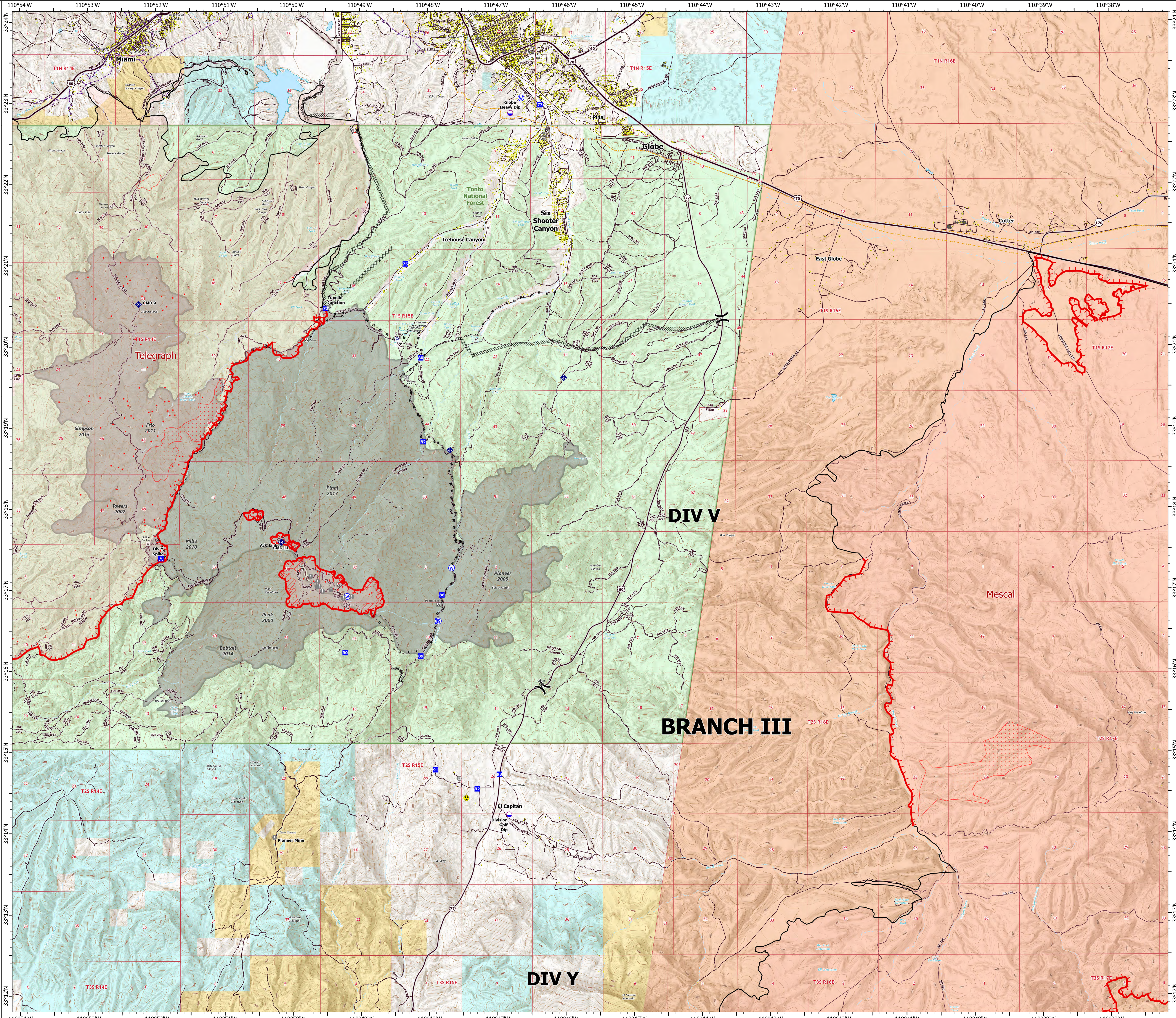
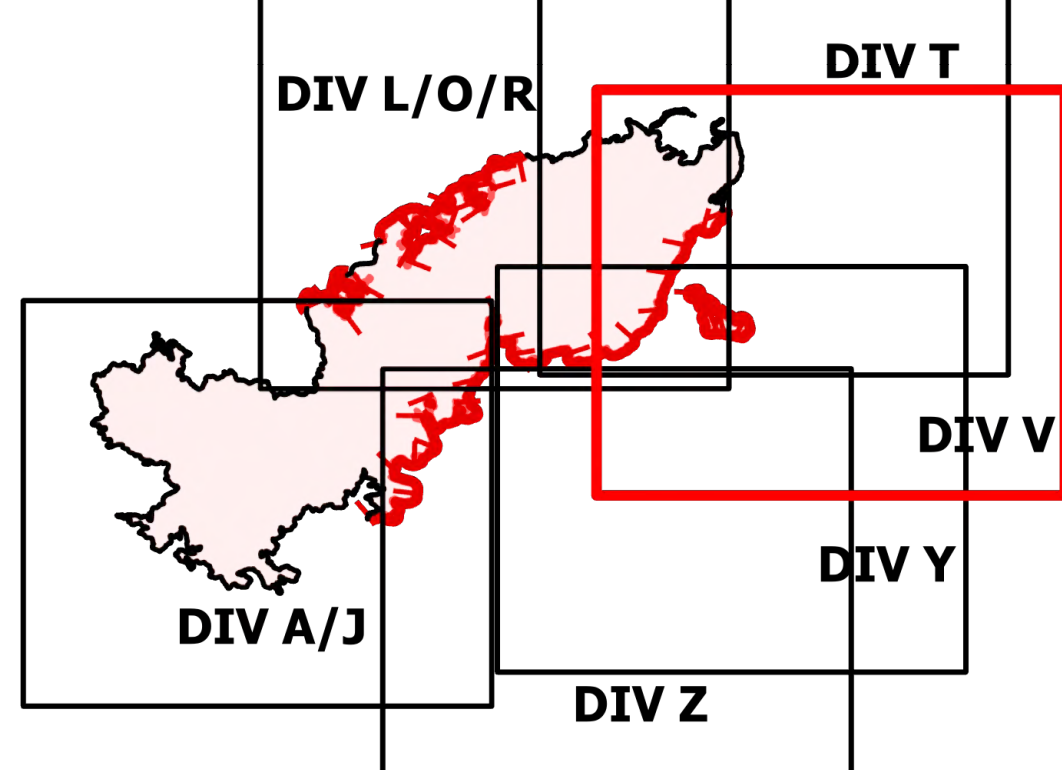
## DIV V

Telegraph

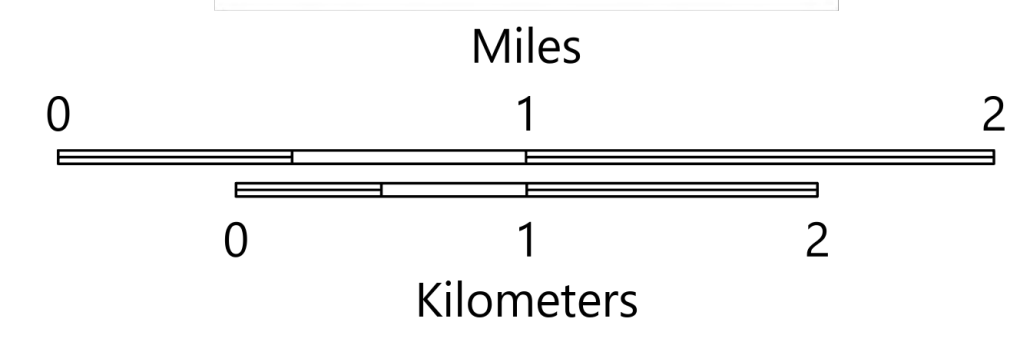
AZ-TNF-1255

6/12/2021

86,529 acres at 6/10/2021 2058



- Structure
- ▲ Campground
- 🏠 District Office
- 🏡 Recreation Residence
- 📍 Trailhead
- 📍 Other
- 📍 Dip Site
- ⏸ Division Break
- 📍 Drop Point
- 📍 Camp
- 📍 Value at Risk
- 📍 Landmark
- 📍 Gate
- 📍 Bridge
- 📍 Mobile Weather Unit
- 📍 Repeater
- 📍 Hazard
- 📍 Water Source
- 📍 Pump
- 📍 IR Isolated Heat Source
- Completed Dozer Line
- Completed Hand Line
- Completed Mixed Construction Line
- Completed Road as Line
- 📍 Fire Edge
- 📍 Contained Line
- 📍 IR Heat Perimeter
- 📍 IR Intense Heat
- 📍 IR Scattered Heat
- 📍 Wildfire Daily Fire Perimeter
- 📍 Highway or Major Connecting Road
- 📍 Local Connecting Road
- 📍 Local Road
- 📍 Tonto National Forest Roads
- 📍 Tonto National Forest Trails
- 📍 Road
- 📍 Oil and Natural Gas Pipelines
- 📍 APS Distribution Overhead Infrastructure
- 📍 Structure
- 📍 USFS Boundary
- 📍 County or Equivalent
- 📍 Township/Range
- 📍 Section
- 📍 Fire History
- 📍 BLM
- 📍 Indian Lands
- 📍 Private
- 📍 State
- 📍 USFS



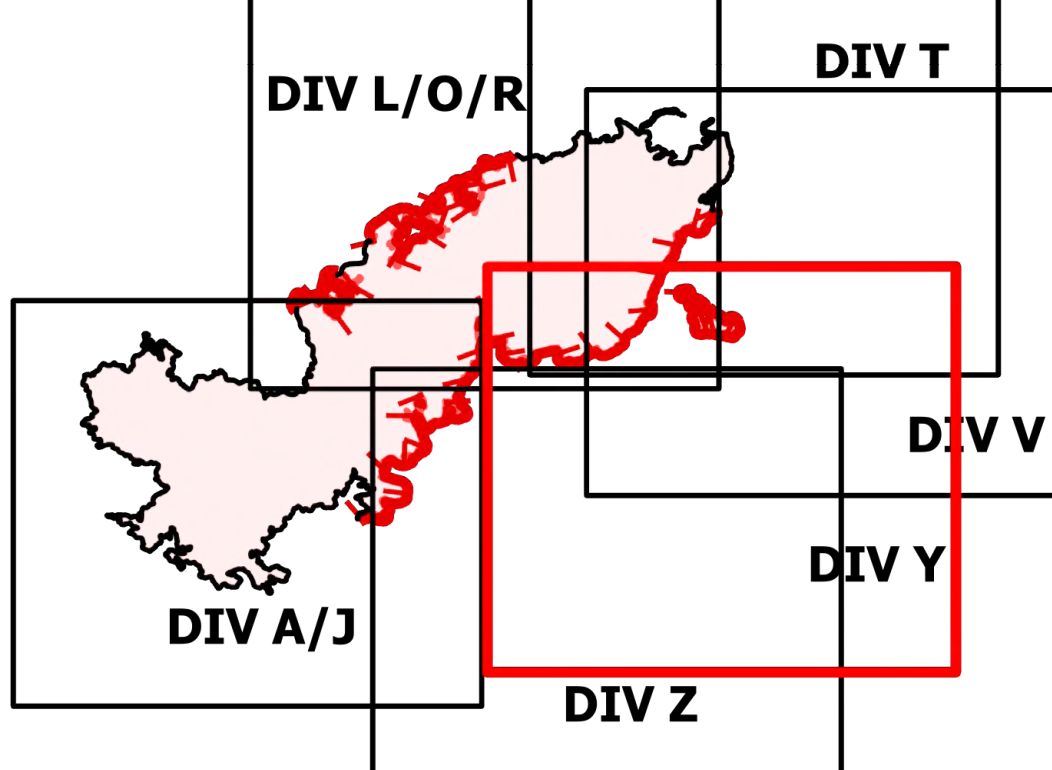
# OPERATIONS

DIV Y

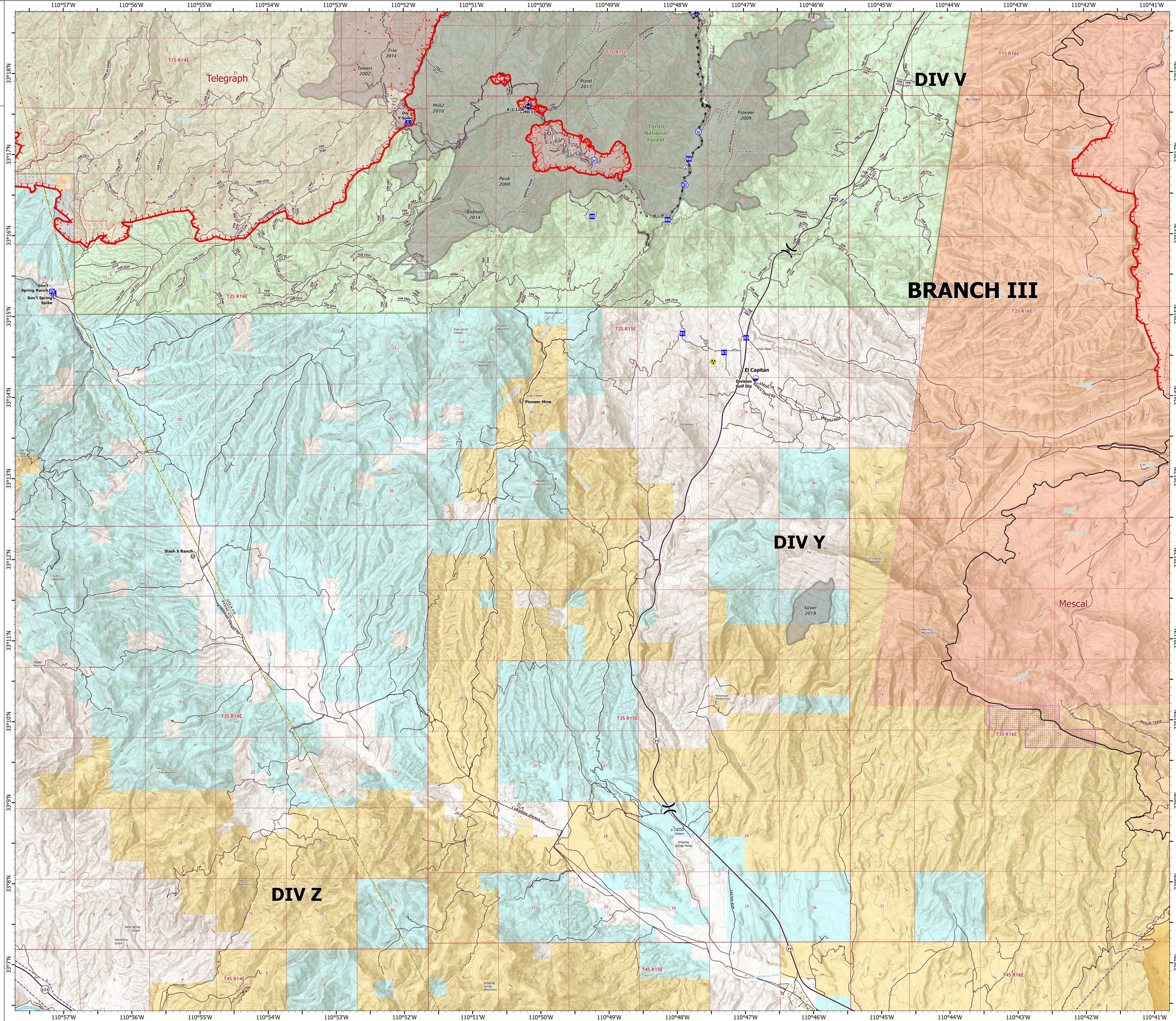
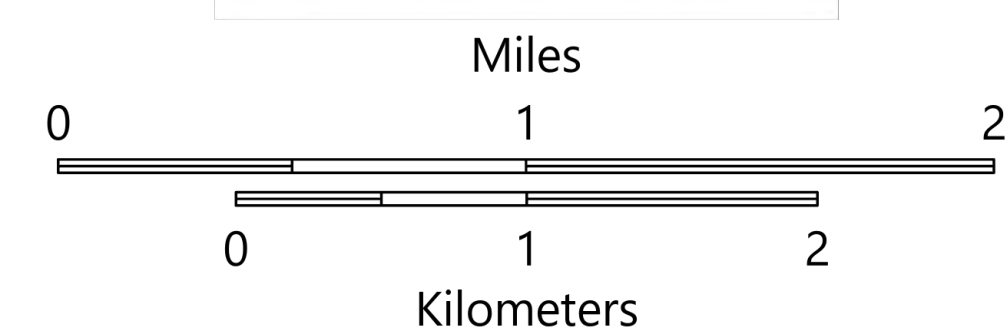
Telegraph  
AZ-TNF-1255

6/12/2021

86,529 acres at 6/10/2021 2058



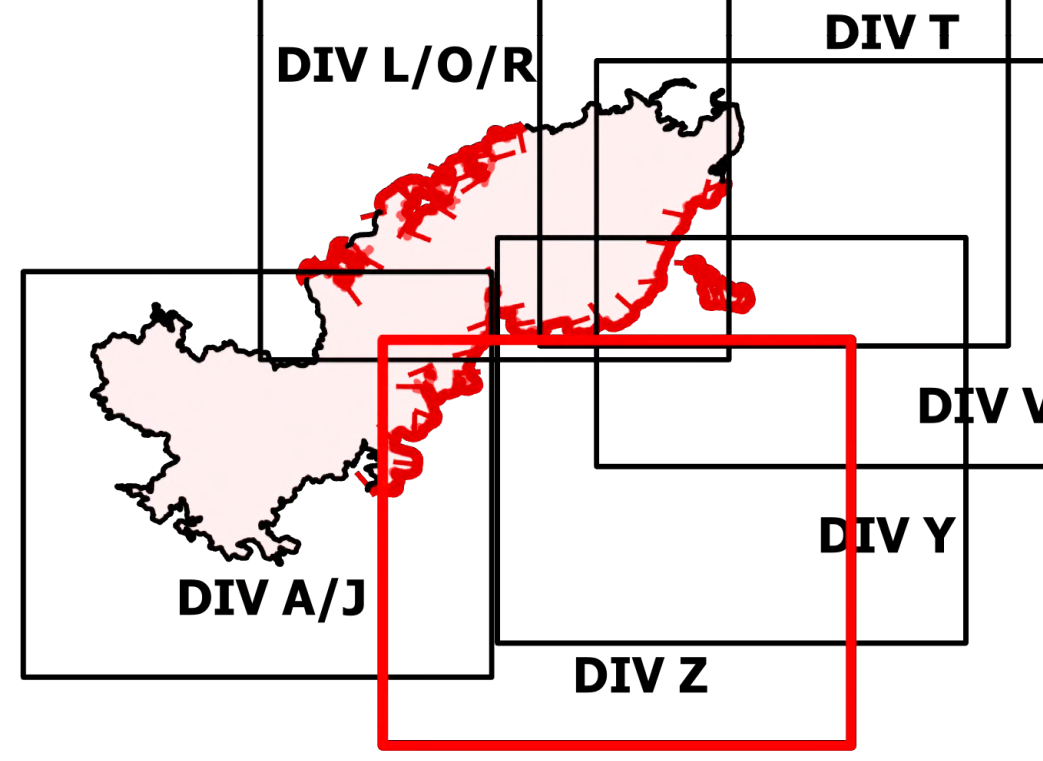
- Structure
- ▲ Campground
- 🏠 Recreation Residence
- ⊠ Other
- 📍 Trailhead
- 📍 Dip Site
- ⏸ Division Break
- ⬇ Drop Point
- 🏕 Camp
- ⚠ Value at Risk
- ⚠ Gate
- 🌉 Bridge
- 📶 Mobile Weather Unit
- 📶 Repeater
- ⚠ Hazard
- 📶 Water Source
- 🔴 IR Isolated Heat Source
- ⚡ Completed Dozer Line
- ⚡ Completed Hand Line
- ⚡ Completed Mixed Construction Line
- 🔴 Fire Edge
- ⚡ Contained Line
- 🔴 IR Heat Perimeter
- 🔴 IR Intense Heat
- 🔴 IR Scattered Heat
- 🔴 Wildfire Daily Fire Perimeter
- 🛣 Local Connecting Road
- 🛣 Local Road
- 🛣 Tonto National Forest Roads
- 🛣 Tonto National Forest Trails
- 🛣 Road
- ⚡ Transmission Lines
- 🏠 Structure
- 🌿 USFS Boundary
- 🌿 County or Equivalent
- 🌿 BLM Area of Critical Environmental Concern
- 🌿 Wilderness Area Boundary
- 🌿 Federal Land within Wilderness Area
- 🌿 Township/Range
- 🌿 Section
- 🏠 Fire History
- 🏠 BLM
- 🏠 Indian Lands
- 🏠 Private
- 🏠 State
- 🏠 USFS



# OPERATIONS

## DIV Z

Telegraph  
AZ-TNF-1255  
6/12/2021  
86,529 acres at 6/10/2021 2058



- Structure
- Substations
- Gas Facility
- ⊕ Trailhead
- ⊖ Dip Site
- ⌋ Division Break
- ⌋ Branch Break
- Drop Point
- ⊠ Camp
- ⊙ Value at Risk
- ⊙ Gate
- ⚠ Hazard
- IR Isolated Heat Source
- Fire Edge
- Contained Line
- IR Heat Perimeter
- Wildfire Daily Fire Perimeter
- Local Connecting Road
- Local Road
- Tonto National Forest Roads
- Tonto National Forest Trails
- Road
- Trail
- Arizona Trail
- Transmission Lines
- Gas Line
- Oil and Natural Gas Pipelines
- APS Distribution Overhead Infrastructure
- Structure
- USFS Boundary
- County or Equivalent
- Township/Range
- Section
- Fire History
- BLM
- BR
- Indian Lands
- Private
- State
- USFS

