

OPERATIONS

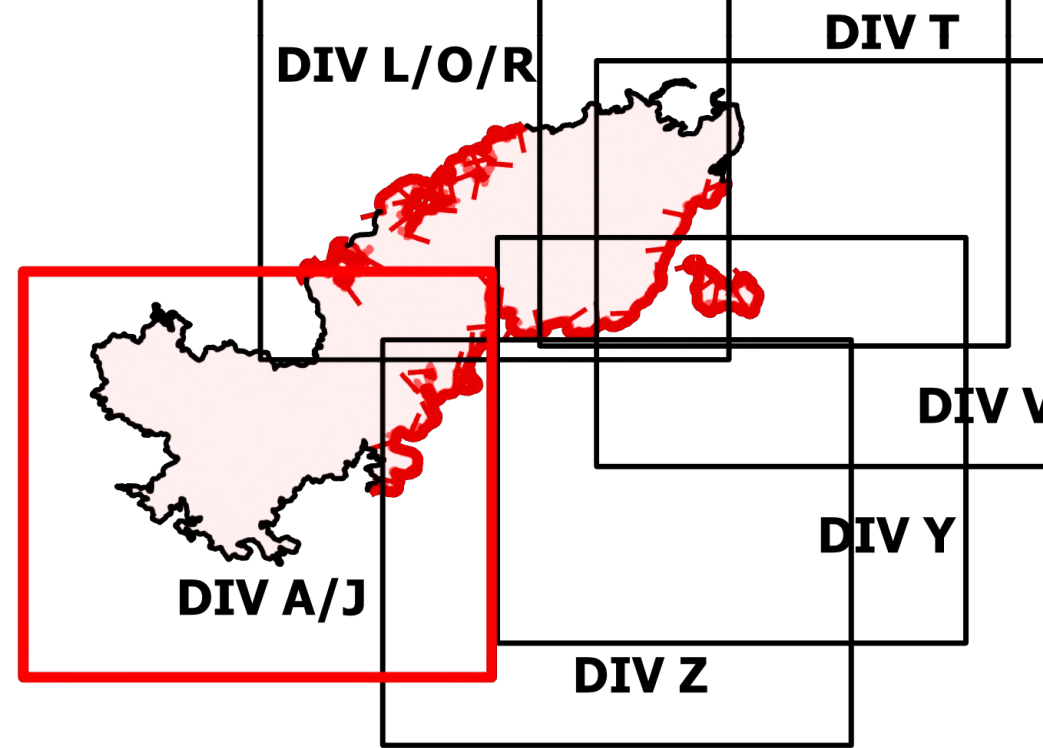
DIV A/J

Telegraph

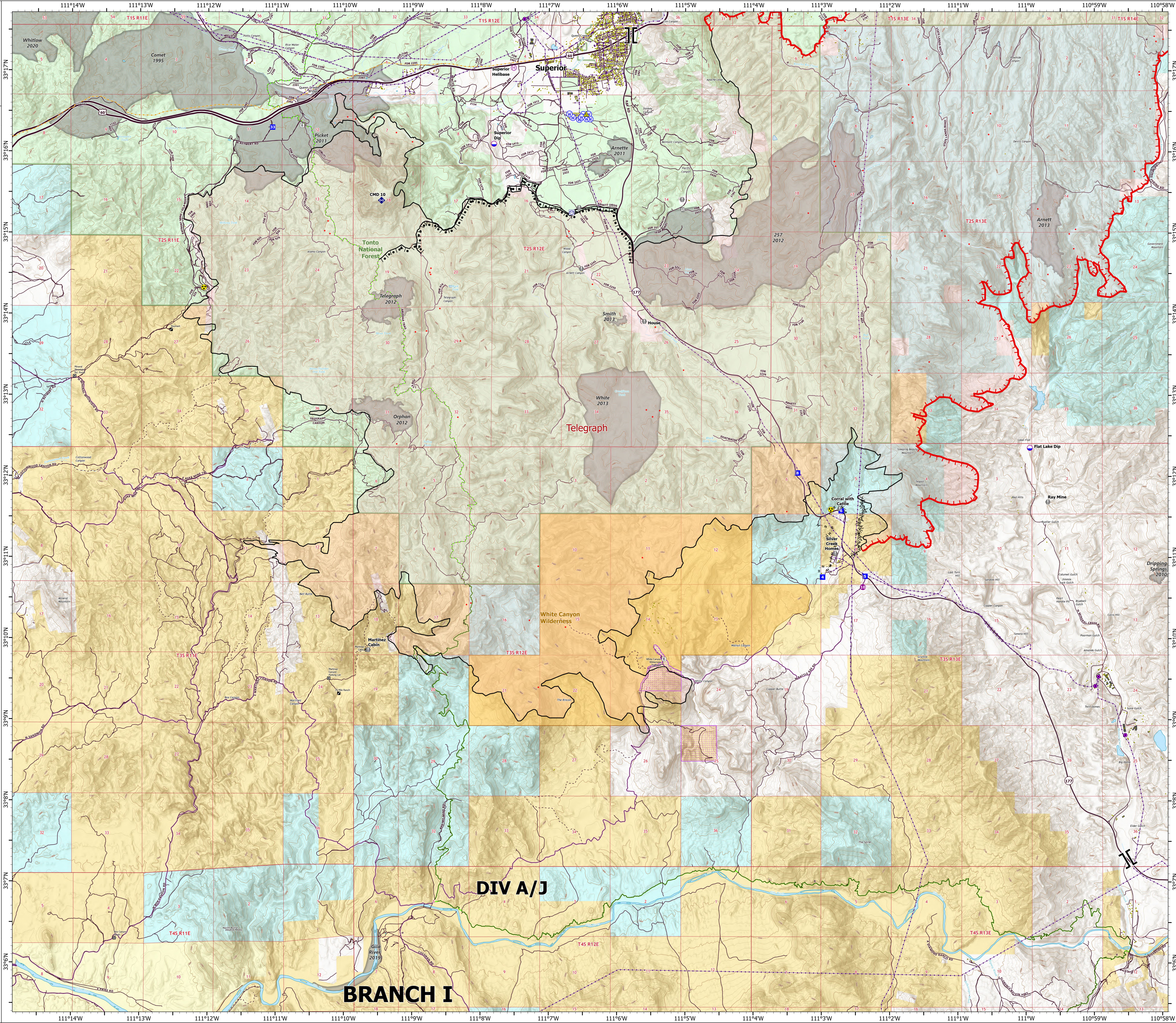
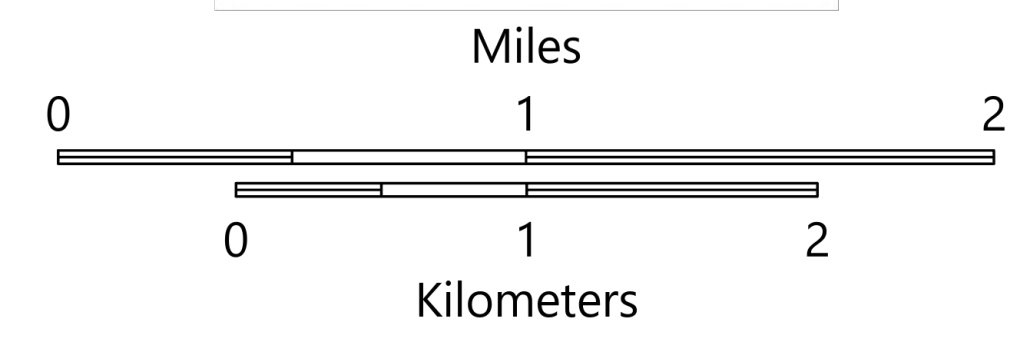
AZ-TNF-1255

6/12/2021

87,078 acres at 6/11/2021 2112



- Structure
- Substations
- ⊠ Trailhead
- ⊠ BLM Planned Portal Sites
- ⊠ Point of Interest
- ⊠ Trailhead
- Dip Site
- Helispot
- Helibase
- ⊠ Branch Break
- Drop Point
- Value at Risk
- Gate
- Repeater
- Safety Zone
- Hazard
- Water Source
- Water Tank
- IR Isolated Heat Source
- Completed Burnout
- Completed Fuel Break
- Completed Hand Line
- Fire Edge
- Contained Line
- IR Heat Perimeter
- Wildfire Daily Fire Perimeter
- Highway or Major Connecting Road
- Local Connecting Road
- Local Road
- Tonto National Forest Roads
- Tonto National Forest Trails
- Road
- Trail
- Arizona Trail
- Middle Gila Access Route
- Transmission Lines
- Oil and Natural Gas Pipelines
- APS Distribution Overhead Infrastructure
- Structure
- USFS Boundary
- County or Equivalent
- BLM Area of Critical Environmental Concern
- Wilderness Area Boundary
- Federal Land within Wilderness Area
- Township/Range
- Section
- Fire History
- BLM
- BR
- Private
- State
- USFS



DIV A/J

BRANCH I

OPERATIONS

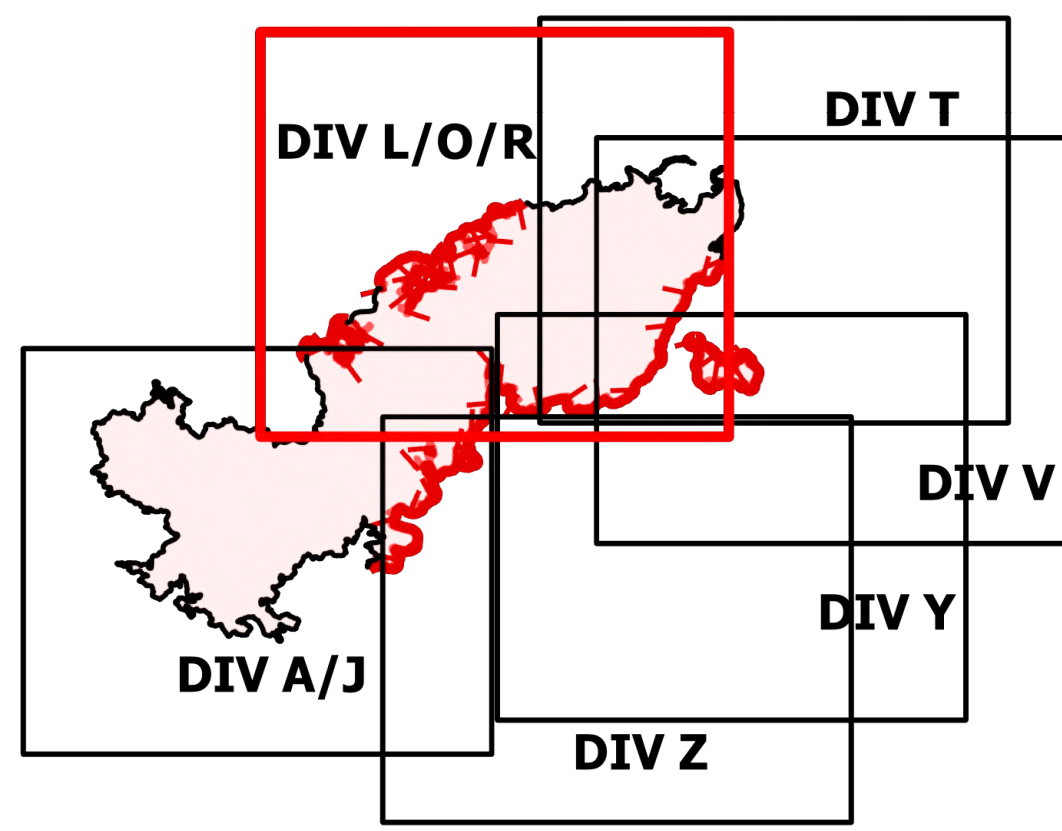
DIV L/O/R

Telegraph

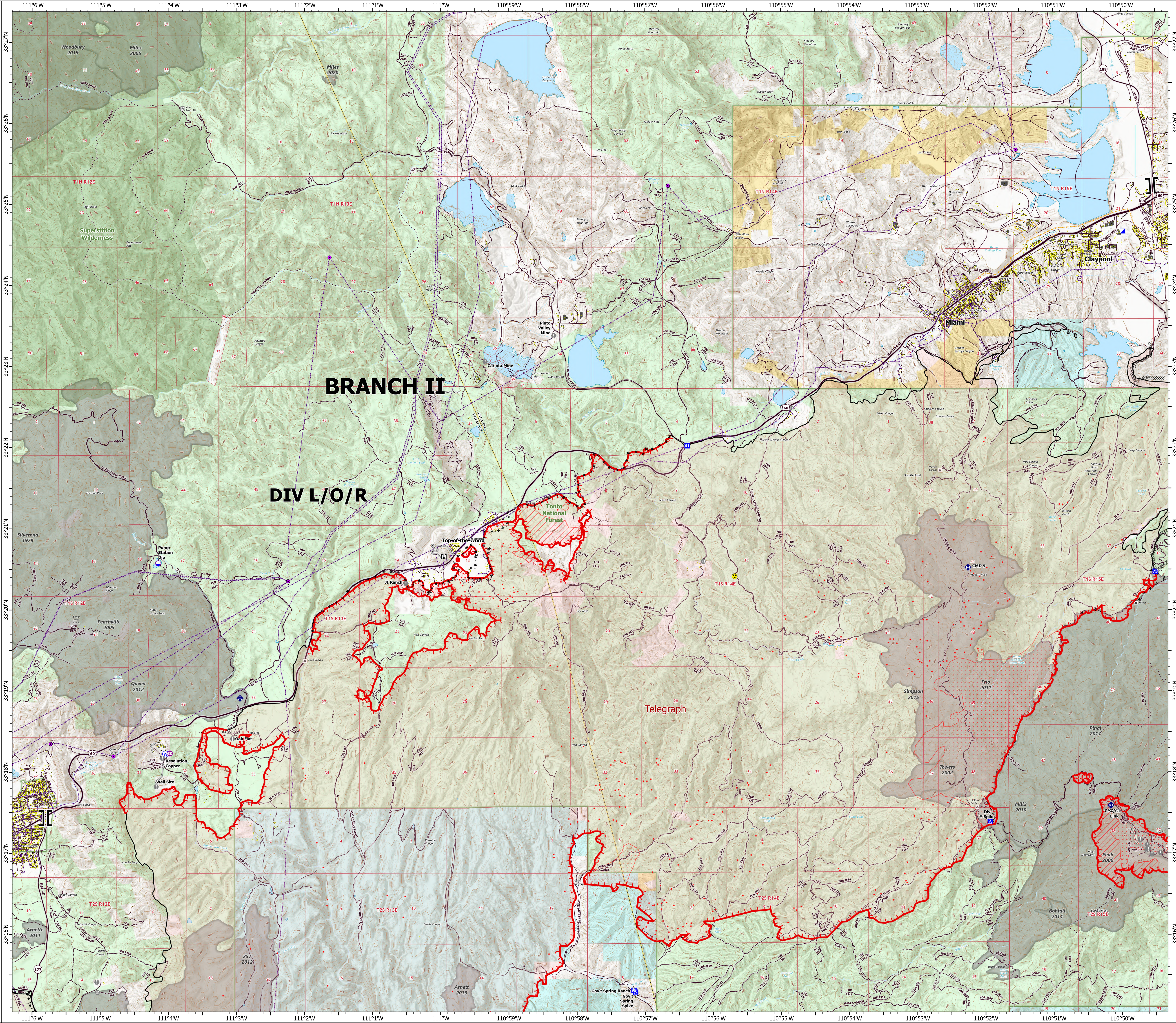
AZ-TNF-1255

6/12/2021

87,078 acres at 6/11/2021 2112



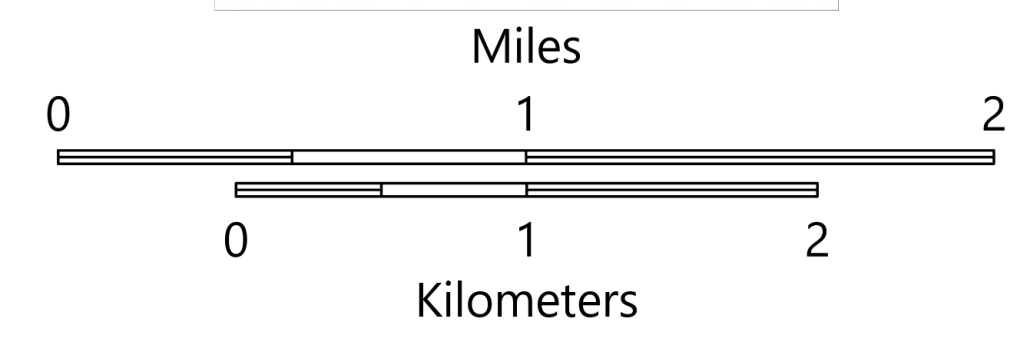
- Structure
- Substations
- ▲ Campground
- Recreation Residence
- ⊠ Trailhead
- Dip Site
- Hellsport
- ⌋ Branch Break
- Incident Command Post
- Drop Point
- Camp
- Lookout
- Value at Risk
- Landmark
- Gate
- Bridge
- Mobile Weather Unit
- Repeater
- Hazard
- Water Source
- IR Isolated Heat Source
- Completed Burnout
- Completed Dozer Line
- Completed Hand Line
- Completed Mixed Construction Line
- Completed Road as Line
- Access or Improved Road
- Fire Edge
- Contained Line
- IR Heat Perimeter
- IR Intense Heat
- IR Scattered Heat
- Wildfire Daily Fire Perimeter
- Highway or Major Connecting Road
- Local Connecting Road
- Local Road
- Tonto National Forest Roads
- Tonto National Forest Trails
- Road
- Transmission Lines
- Oil and Natural Gas Pipelines
- APS Distribution Overhead Infrastructure
- Structure
- USFS Boundary
- County or Equivalent
- Township/Range
- Section
- Fire History
- USFS Wilderness Area
- BLM
- Private
- State
- USFS



BRANCH II

DIV L/O/R

Telegraph



OPERATIONS

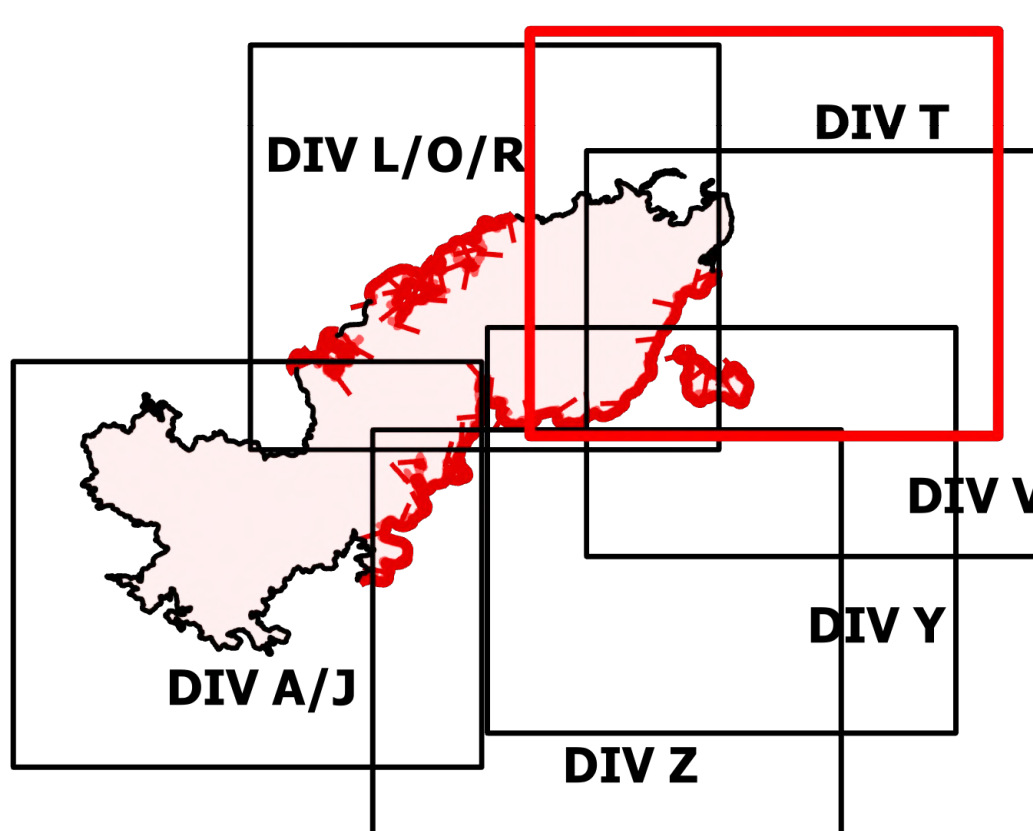
DIV T

Telegraph

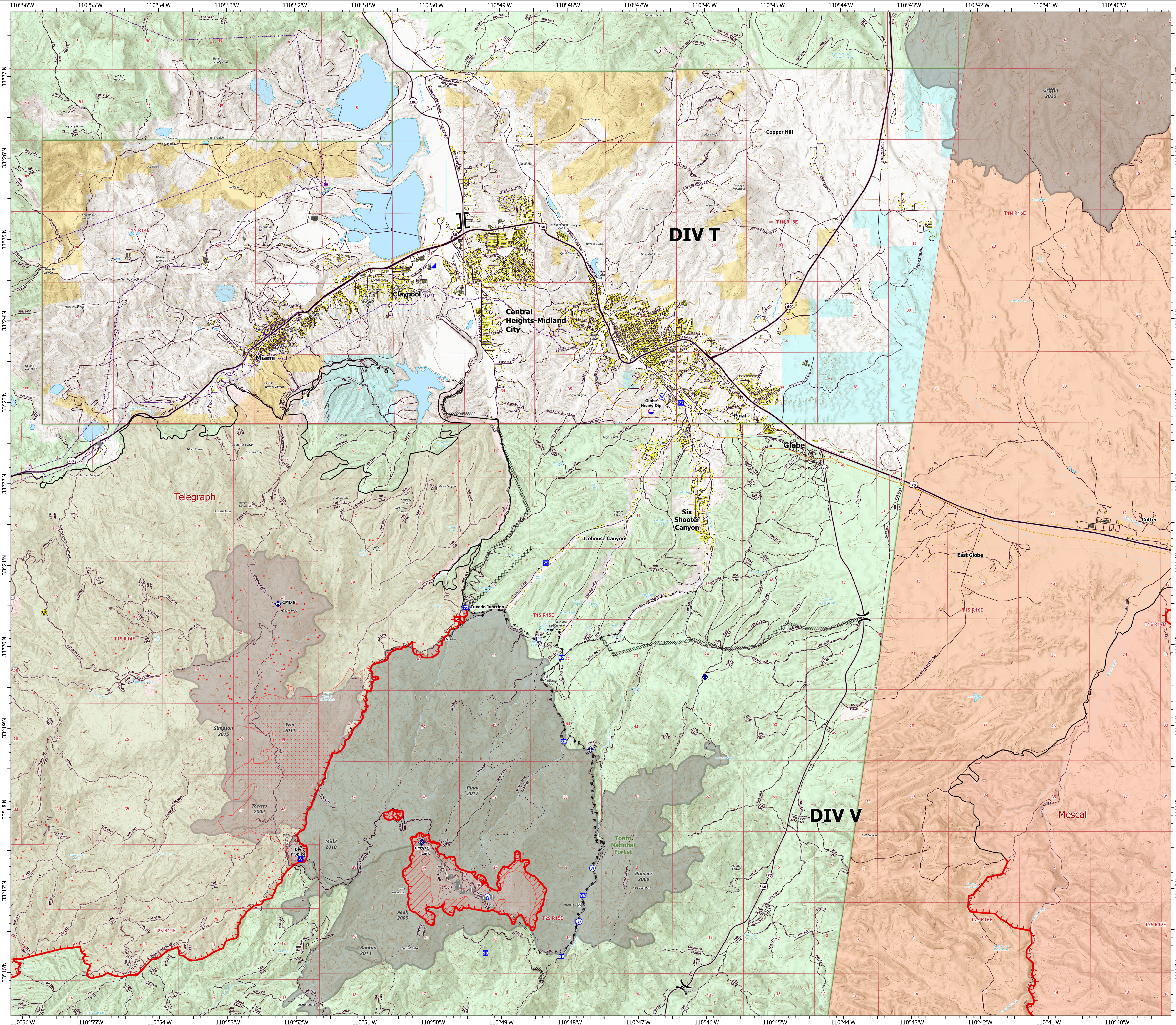
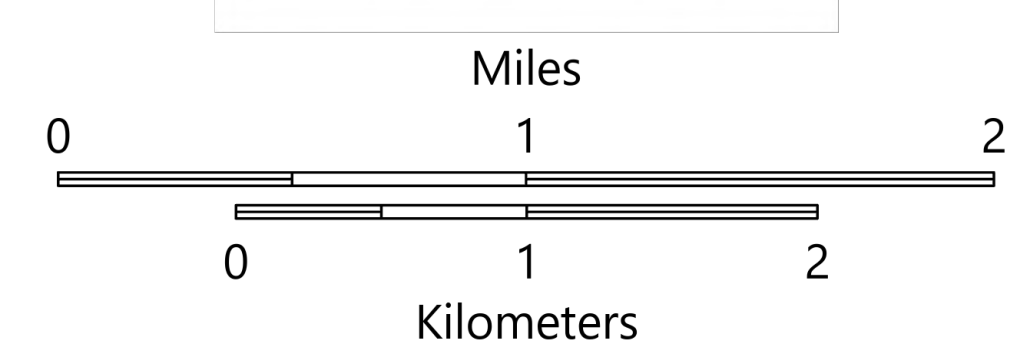
AZ-TNF-1255

6/12/2021

87,078 acres at 6/11/2021 2112



- Structure
- Substations
- ▲ Campground
- District Office
- Recreation Residence
- Trailhead
- Other
- Dip Site
- X Division Break
- || Branch Break
- Incident Command Post
- Drop Point
- Camp
- Value at Risk
- Landmark
- Gate
- Bridge
- Mobile Weather Unit
- Repeater
- Hazard
- Water Source
- Pump
- IR Isolated Heat Source
- Completed Dozer Line
- Completed Hand Line
- Completed Mixed Construction Line
- Completed Road as Line
- Fire Edge
- Contained Line
- IR Heat Perimeter
- IR Intense Heat
- IR Scattered Heat
- Wildfire Daily Fire Perimeter
- Highway or Major Connecting Road
- Local Connecting Road
- Local Road
- Tonto National Forest Roads
- Tonto National Forest Trails
- Road
- Transmission Lines
- Oil and Natural Gas Pipelines
- APS Distribution Overhead Infrastructure
- Structure
- USFS Boundary
- County or Equivalent
- Township/Range
- Section
- Fire History
- BLM
- Indian Lands
- Private
- State
- USFS



OPERATIONS

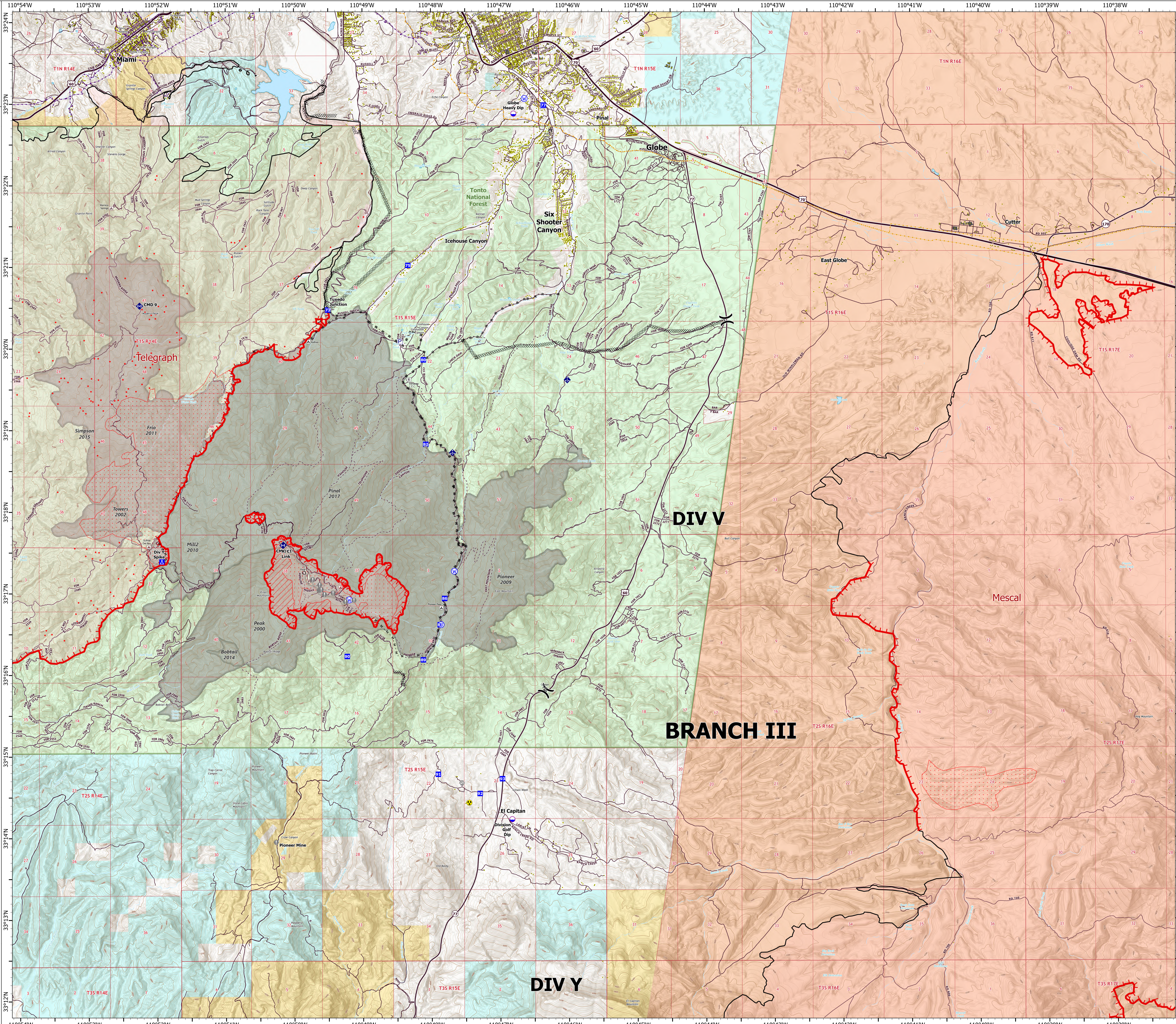
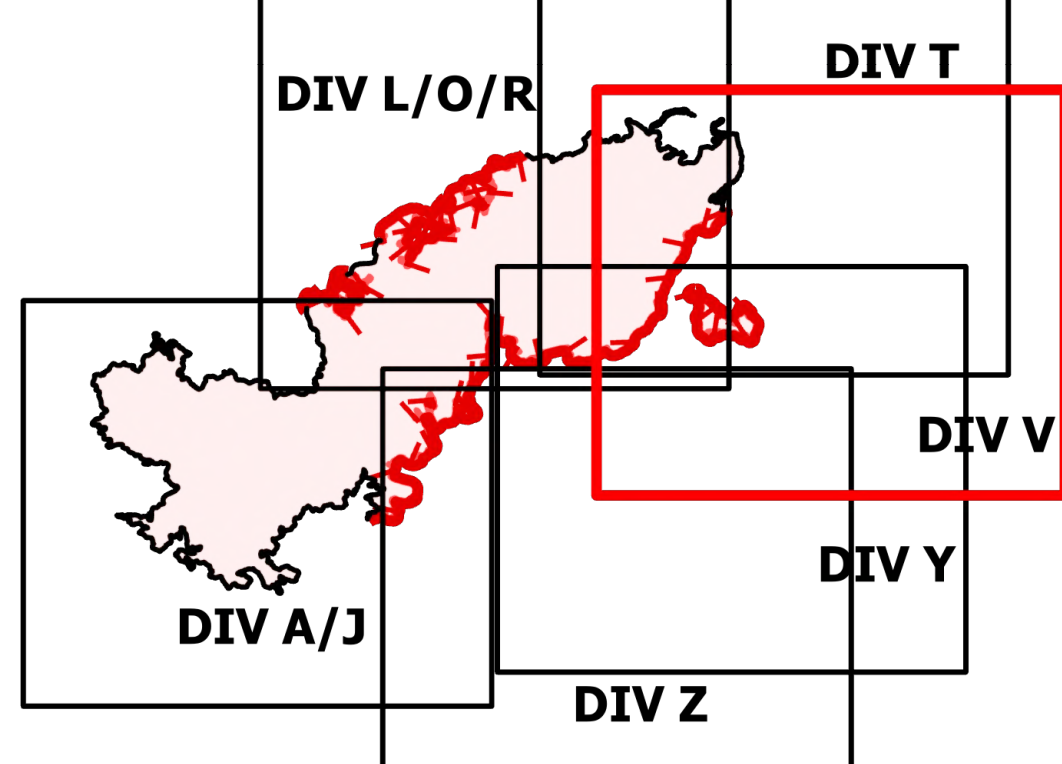
DIV V

Telegraph

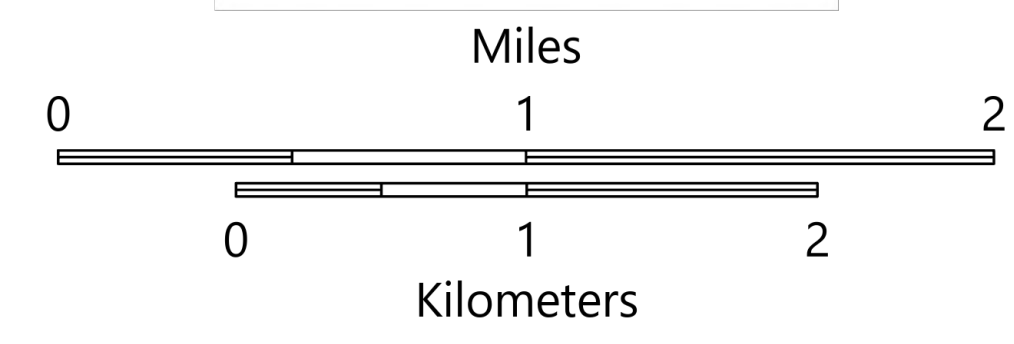
AZ-TNF-1255

6/12/2021

87,078 acres at 6/11/2021 2112



- Structure
- ▲ Campground
- 🏠 District Office
- 🏡 Recreation Residence
- 🚶 Trailhead
- 🏠 Other
- 📍 Dip Site
- ⏸ Division Break
- 📍 Drop Point
- 🏕 Camp
- ⚠ Value at Risk
- 📍 Landmark
- 🚪 Gate
- 🌉 Bridge
- 📶 Mobile Weather Unit
- 📶 Repeater
- ⚠ Hazard
- 📍 Water Source
- 📍 Pump
- 🔴 IR Isolated Heat Source
- ⋯ Completed Dozer Line
- ⋯ Completed Hand Line
- ⋯ Completed Mixed Construction Line
- ⋯ Completed Road as Line
- 🔴 Fire Edge
- 🔴 Contained Line
- 🔴 IR Heat Perimeter
- 🔴 IR Intense Heat
- 🔴 IR Scattered Heat
- 🔴 Wildfire Daily Fire Perimeter
- 🛣 Highway or Major Connecting Road
- 🛣 Local Connecting Road
- 🛣 Local Road
- 🛣 Tonto National Forest Roads
- 🛣 Tonto National Forest Trails
- 🛣 Road
- 🛣 Oil and Natural Gas Pipelines
- 🛣 APS Distribution Overhead Infrastructure
- 🏠 Structure
- 🌿 USFS Boundary
- 🌿 County or Equivalent
- 🌿 Township/Range
- 🌿 Section
- 🌿 Fire History
- 🌿 BLM
- 🌿 Indian Lands
- 🌿 Private
- 🌿 State
- 🌿 USFS



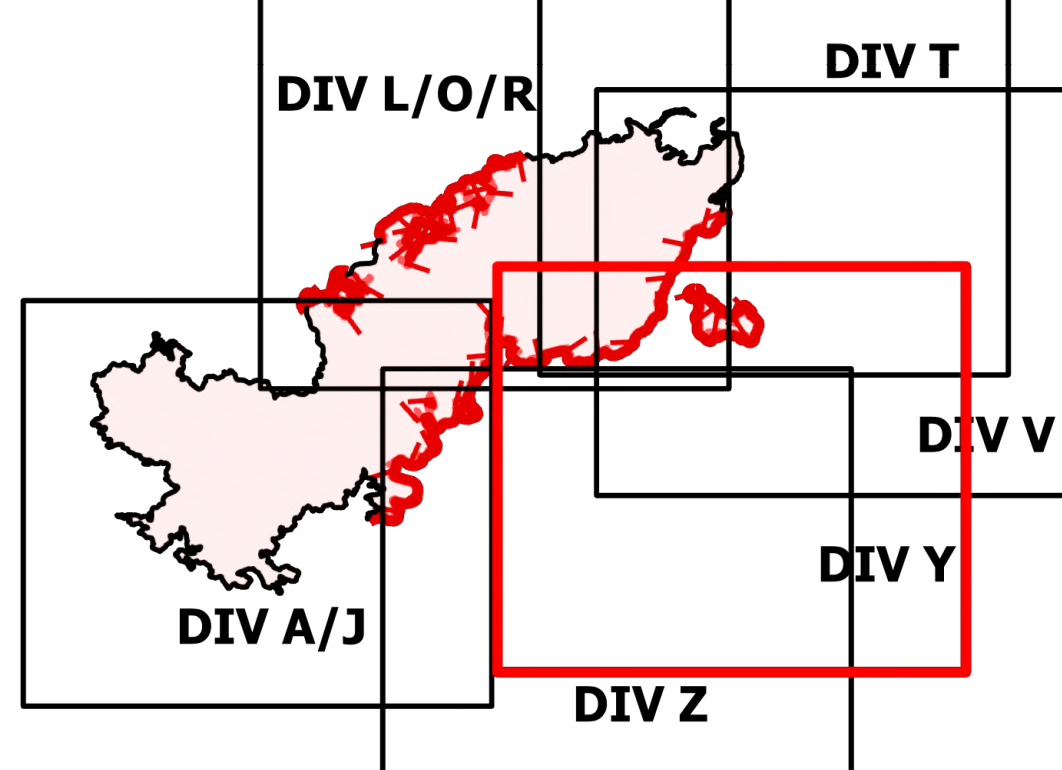
OPERATIONS

DIV Y

Telegraph
AZ-TNF-1255

6/12/2021

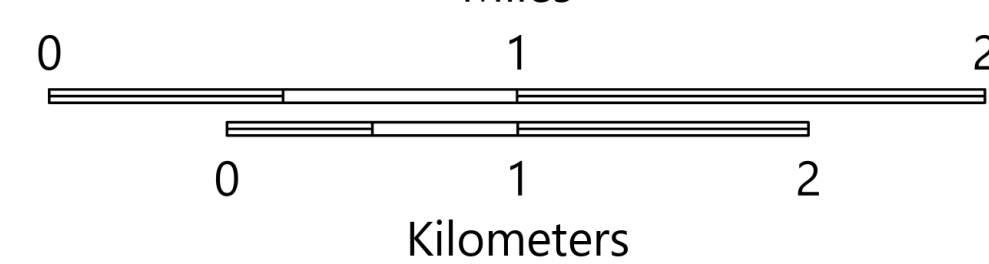
87,078 acres at 6/11/2021 2112



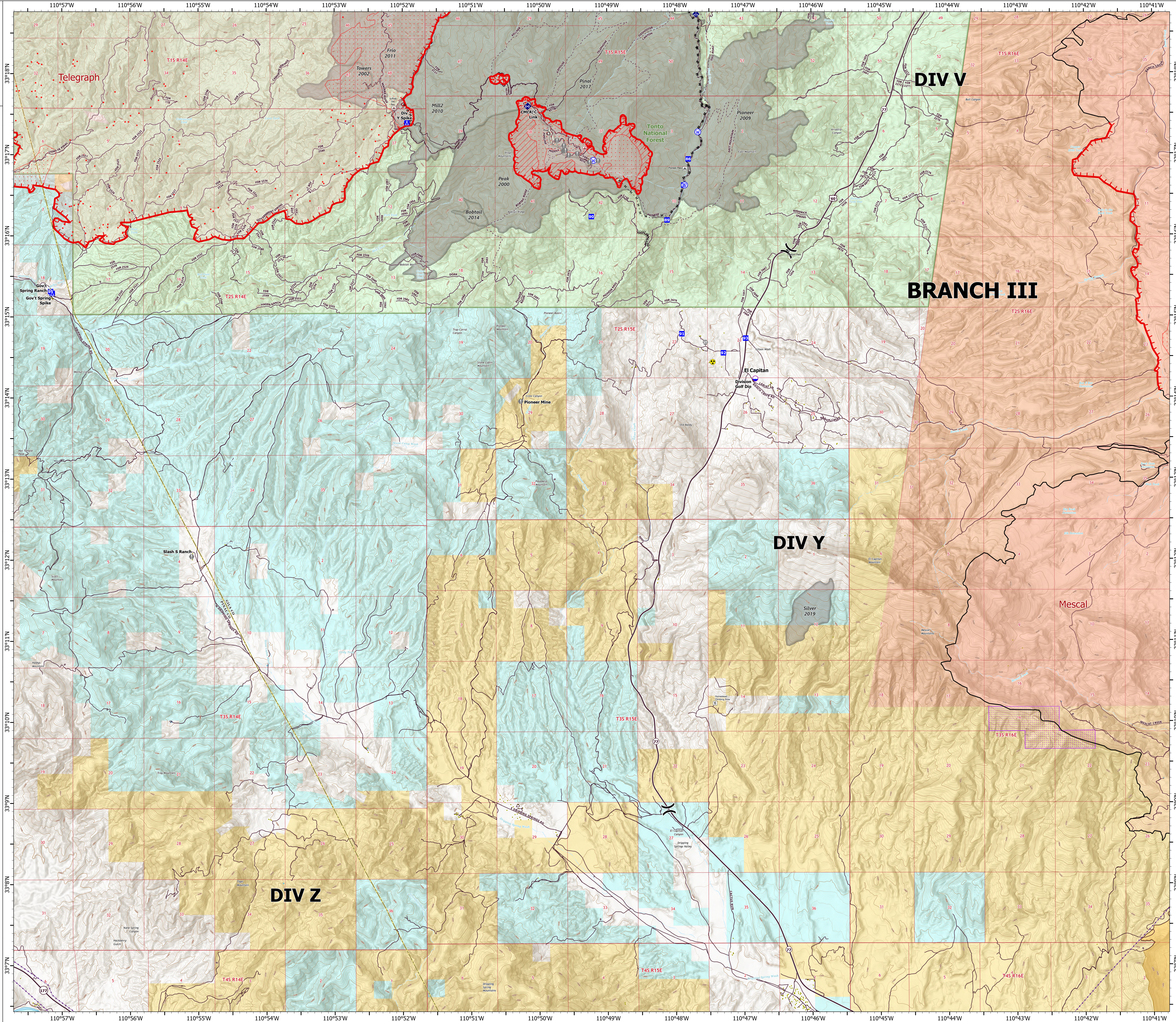
- Structure
- ▲ Campground
- 🏠 Recreation Residence
- 🏠 Other
- 📍 Trailhead
- 📍 Dip Site
- ⏸ Division Break
- ⬇ Drop Point
- 🏠 Camp
- ⚠ Value at Risk
- 🚪 Gate
- 🌉 Bridge
- 📡 Mobile Weather Unit
- 📡 Repeater
- ⚠ Hazard
- 🌊 Water Source
- 🔴 IR Isolated Heat Source
- Completed Dozer Line
- Completed Hand Line
- Completed Mixed Construction Line
- Fire Edge
- Contained Line
- IR Heat Perimeter
- IR Intense Heat
- IR Scattered Heat
- Wildfire Daily Fire Perimeter
- Local Connecting Road
- Local Road
- Tonto National Forest Roads
- Tonto National Forest Trails
- Road
- Transmission Lines
- Structure
- USFS Boundary
- County or Equivalent
- BLM Area of Critical Environmental Concern
- Wilderness Area Boundary
- Federal Land within Wilderness Area
- Township/Range
- Section
- Fire History
- BLM
- Indian Lands
- Private
- State
- USFS



Miles



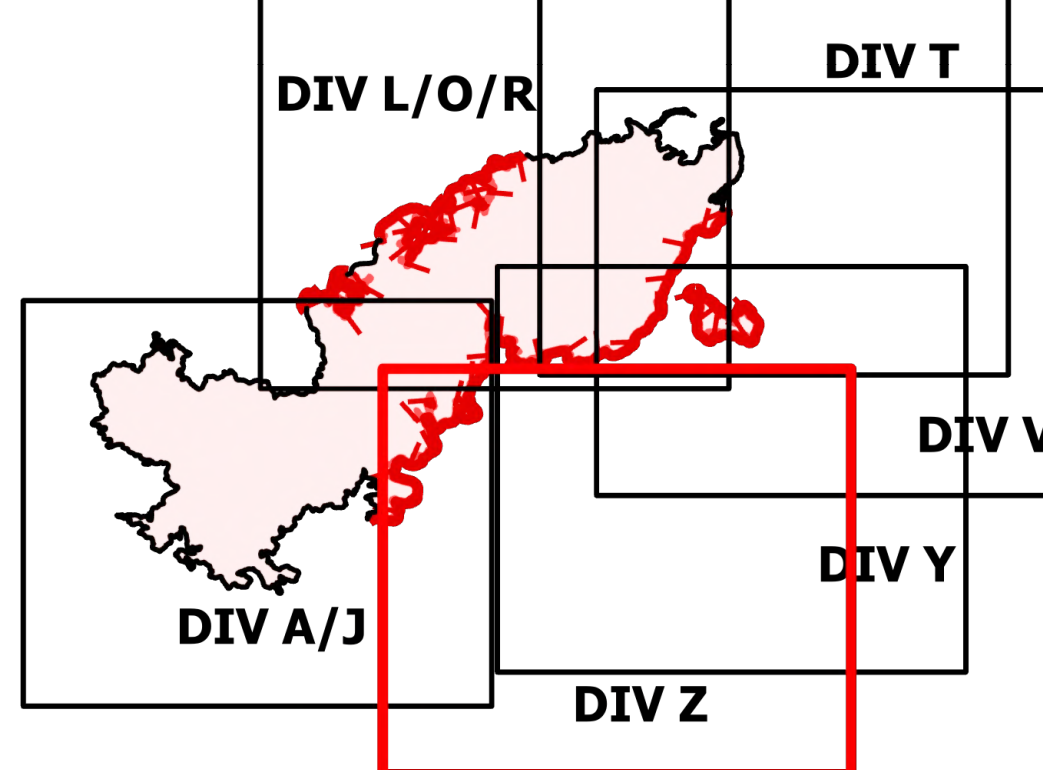
Kilometers



OPERATIONS

DIV Z

Telegraph
AZ-TNF-1255
6/12/2021
87,078 acres at 6/11/2021 2112



- Structure
- Substations
- Gas Facility
- ⊗ Trailhead
- ⊗ Dip Site
- ⊗ Division Break
- ⊗ Branch Break
- Drop Point
- ⊗ Camp
- Value at Risk
- Gate
- Hazard
- IR Isolated Heat Source
- Fire Edge
- Contained Line
- IR Heat Perimeter
- Wildfire Daily Fire Perimeter
- Local Connecting Road
- Local Road
- Tonto National Forest Roads
- Tonto National Forest Trails
- Road
- Trail
- Arizona Trail
- Transmission Lines
- Gas Line
- Oil and Natural Gas Pipelines
- APS Distribution Overhead Infrastructure
- Structure
- USFS Boundary
- County or Equivalent
- Township/Range
- Section
- Fire History
- BLM
- BR
- Indian Lands
- Private
- State
- USFS

