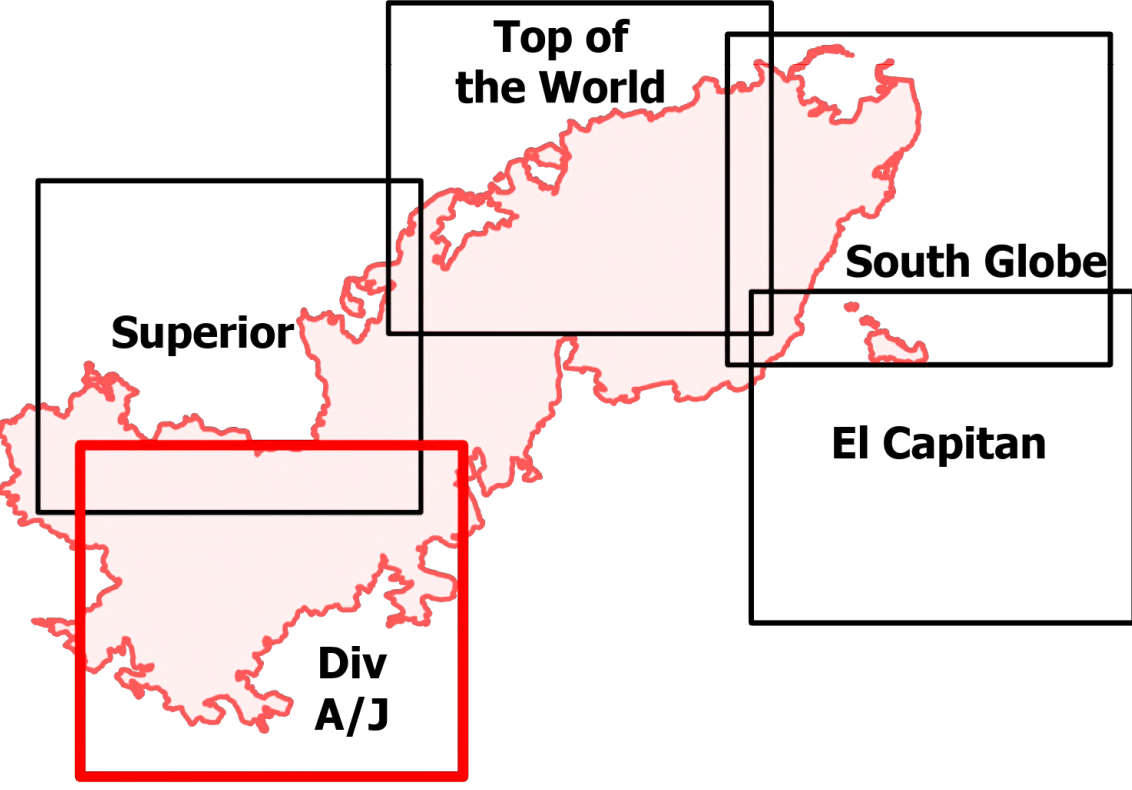


STRUCTURE

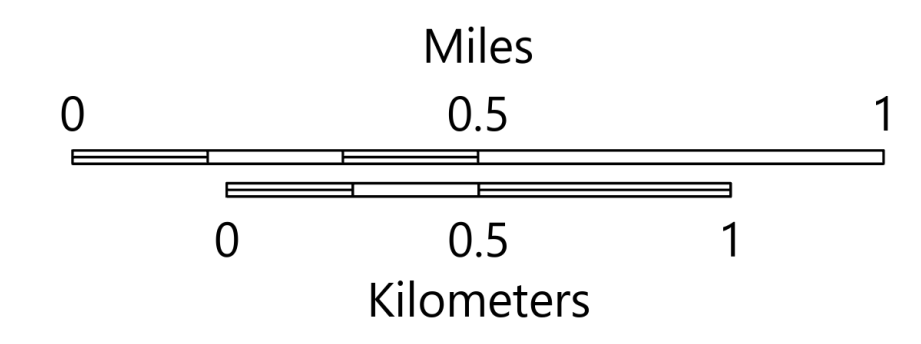
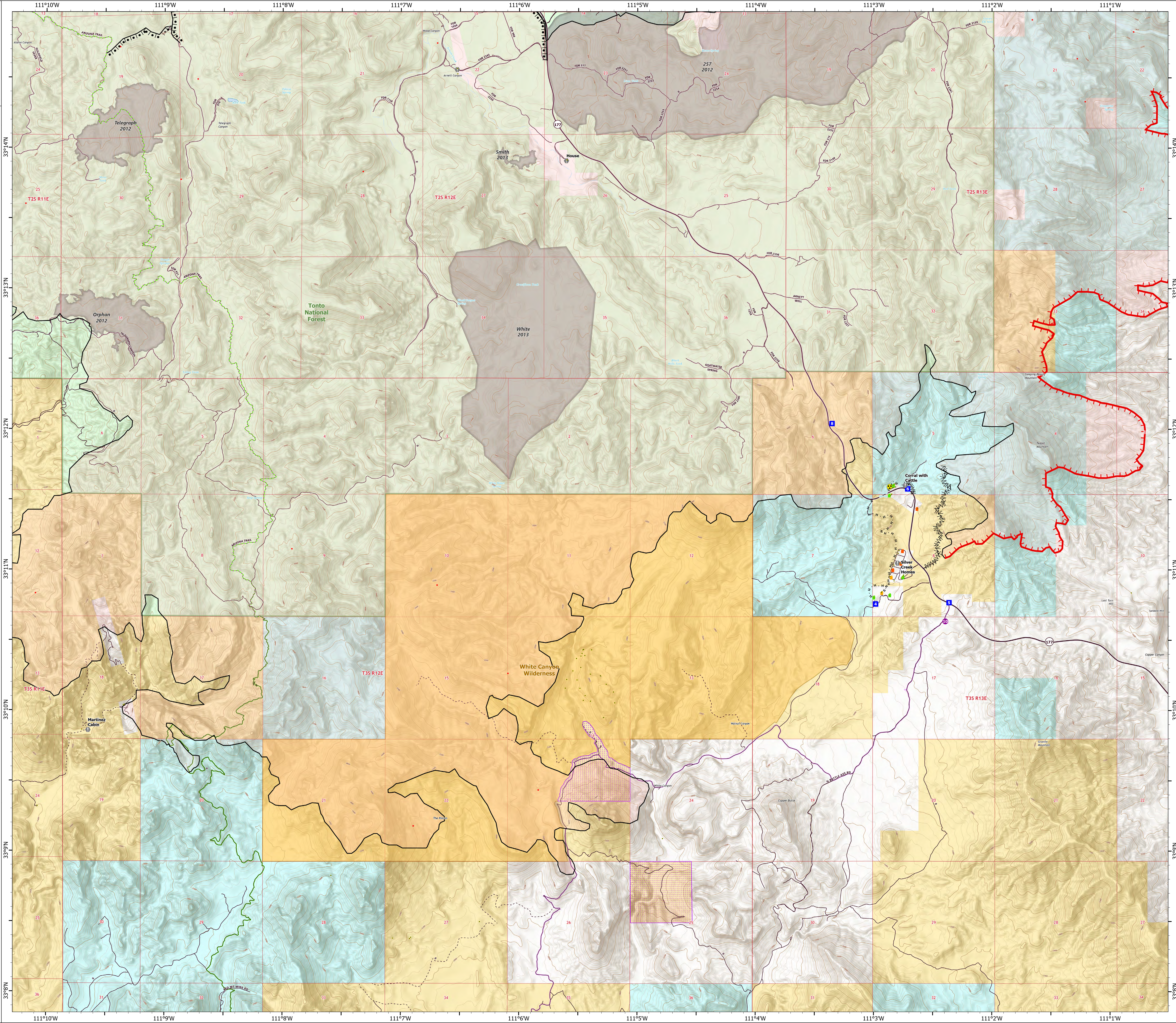
Div A/J Vicinity

Telegraph

AZ-TNF-1255
6/12/2021
86,529 acres at 6/10/2021 2058



- Helispot
- Drop Point
- Value at Risk
- ⚠ Hazard
- IR Isolated Heat Source
- Structure
- Defensible - Stand Alone
- Defensible - Prep and Hold
- Non-Defensible - Rescue Drive-By
- Completed Burnout
- Completed Fuel Break
- Completed Hand Line
- Fire Edge
- Contained Line
- Wildfire Daily Fire Perimeter
- IR Heat Perimeter
- Local Connecting Road
- Local Road
- Road
- Trail
- Arizona Trail
- Middle Gila Access Route
- County or Equivalent
- Township/Range
- Section
- BLM
- Private
- State
- USFS
- BLM Area of Critical Environmental Concern
- Structure
- USFS Boundary
- Fire History



STRUCTURE

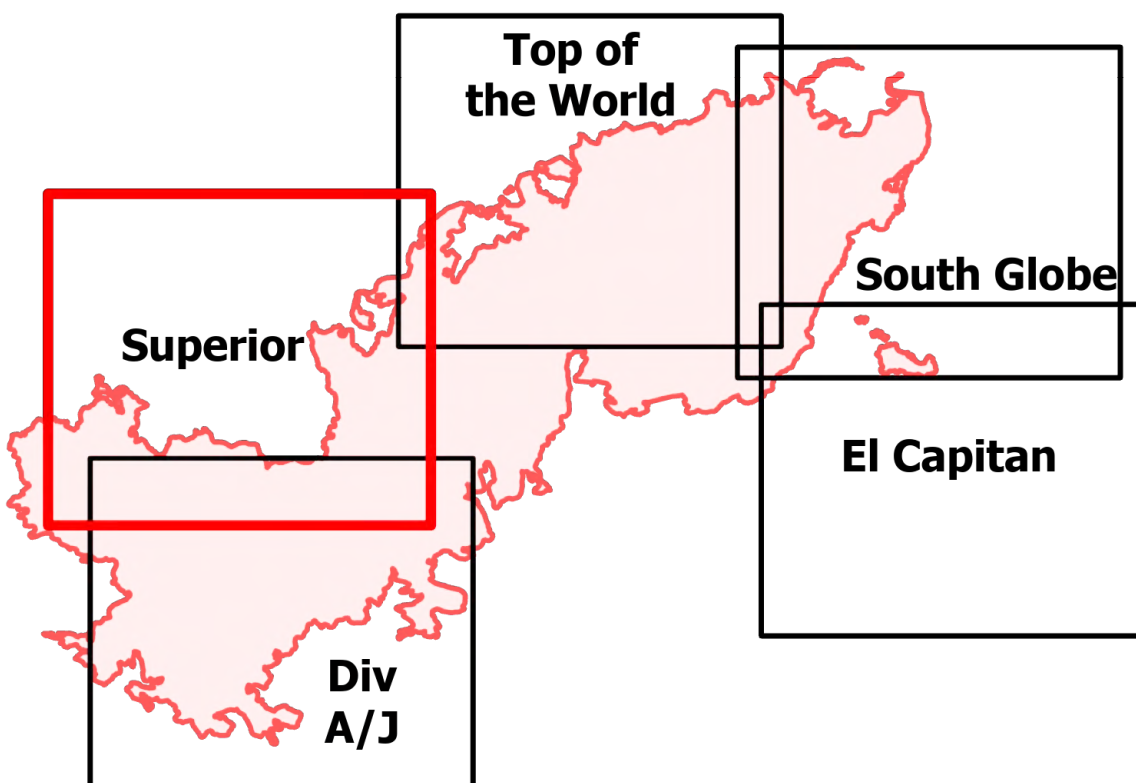
Superior Vicinity

Telegraph

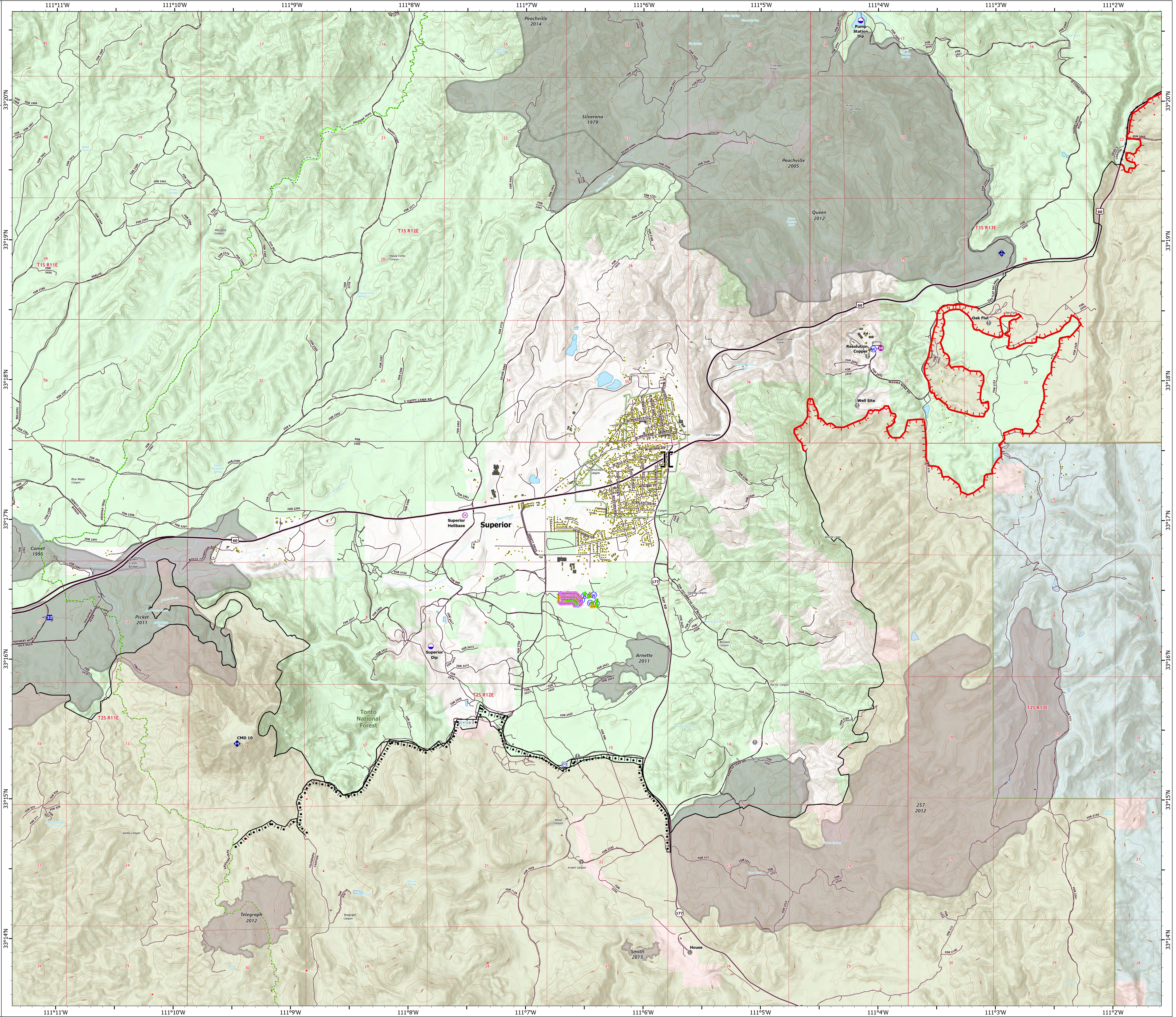
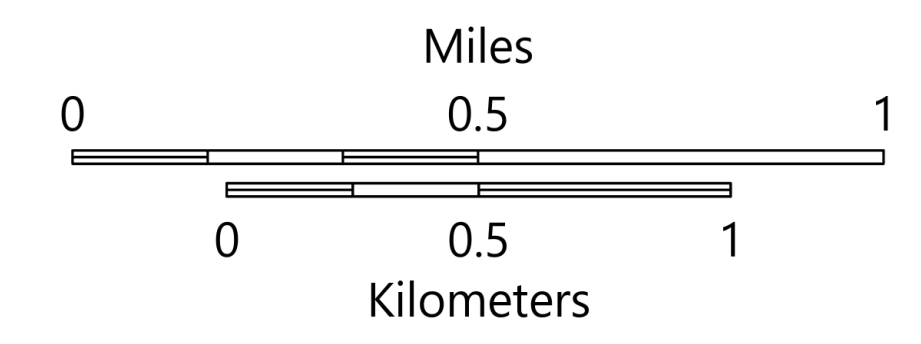
AZ-TNF-1255

6/12/2021

86,529 acres at 6/10/2021 2058



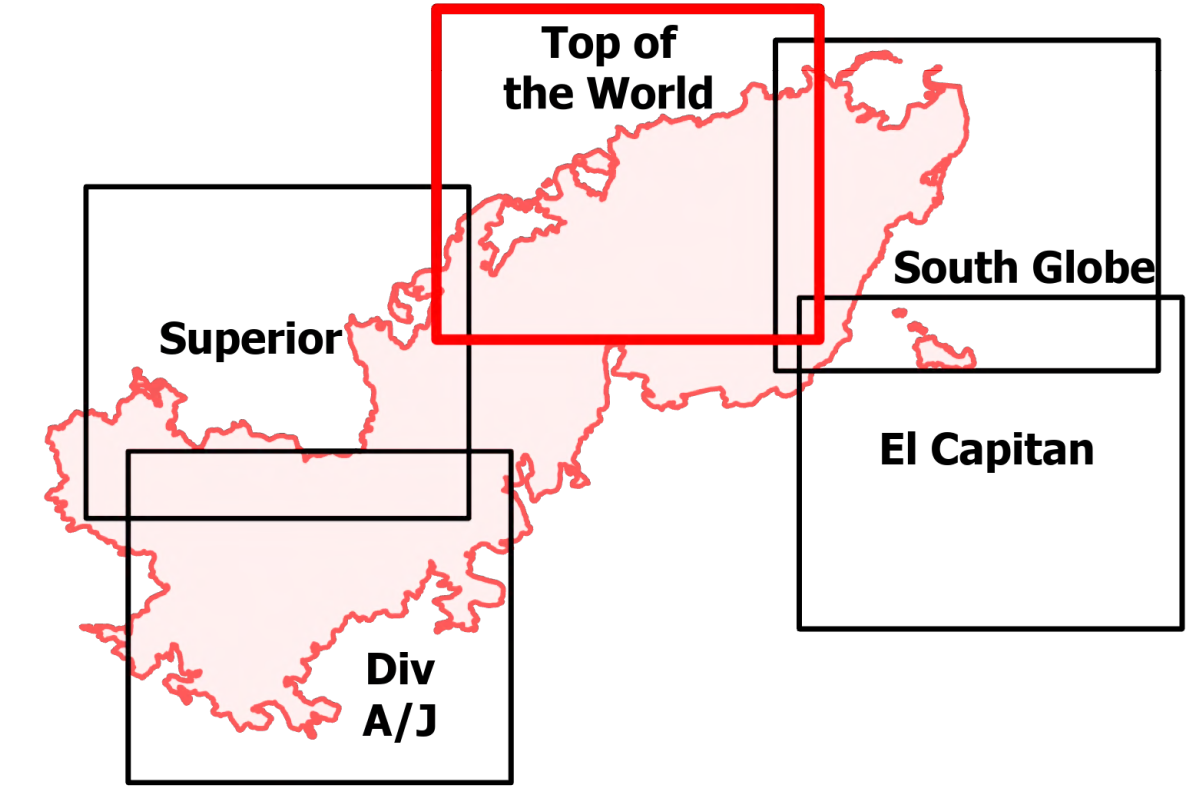
- Water Tank
- Dip Site
- Helispot
- Helibase
- Branch Break
- Drop Point
- Value at Risk
- Gate
- Mobile Weather Unit
- Repeater
- Safety Zone
- Water Source
- IR Isolated Heat Source
- Structure
- Defensible - Stand Alone
- Defensible - Prep and Hold
- Non-Defensible - Prep and Leave
- Completed Burnout
- Completed Hand Line
- Completed Road as Line
- Access or Improved Road
- Fire Edge
- Contained Line
- Wildfire Daily Fire Perimeter
- IR Heat Perimeter
- Highway or Major Connecting Road
- Local Connecting Road
- Local Road
- Road
- Arizona Trail
- County or Equivalent
- Township/Range
- Section
- Private
- State
- USFS
- Structure
- USFS Boundary
- Fire History



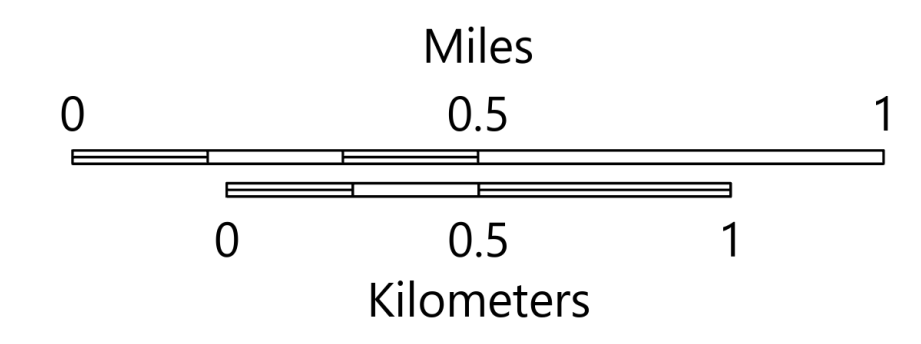
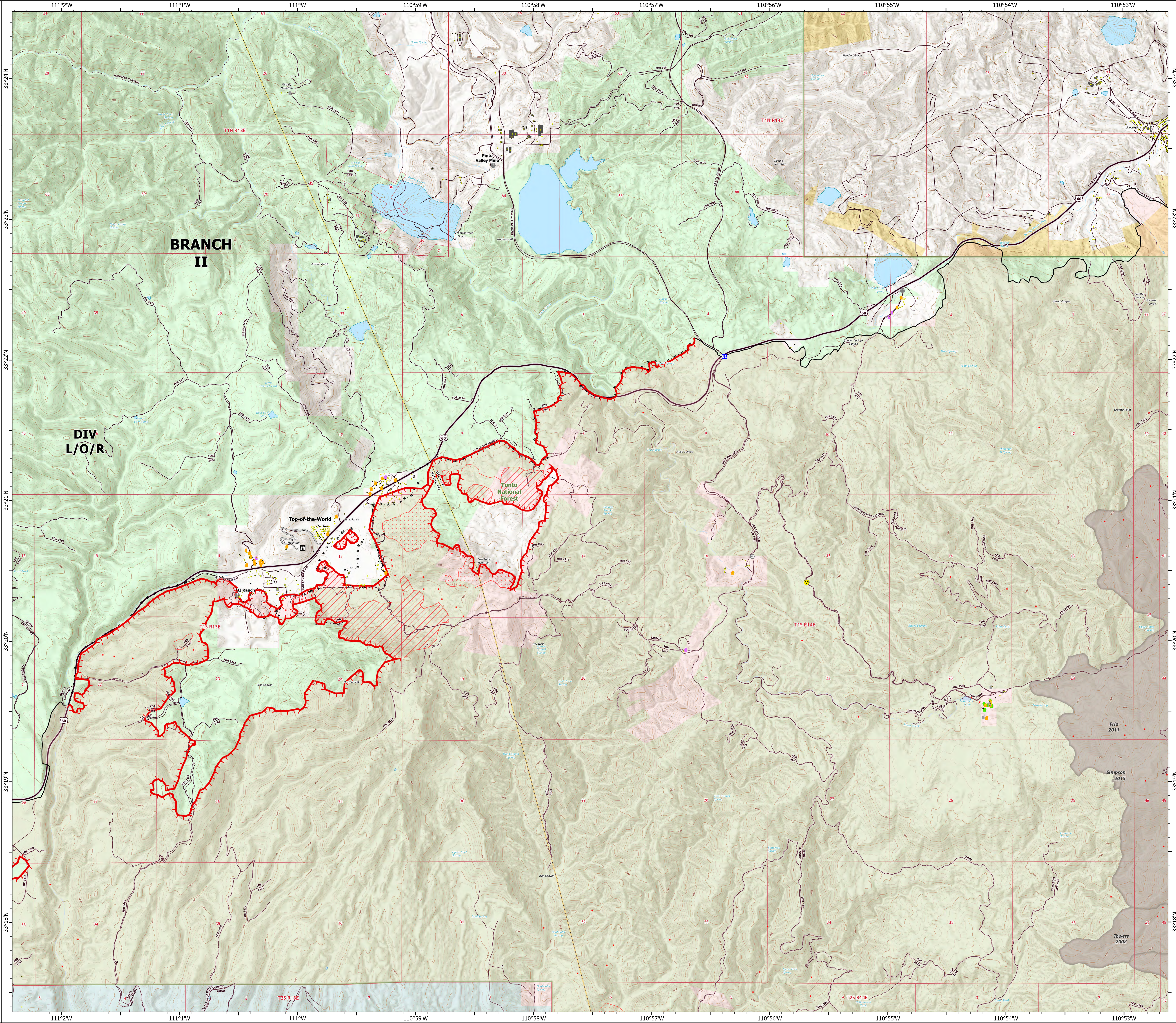
STRUCTURE

Top of the World Vicinity

Telegraph
AZ-TNF-1255
6/12/2021
86,529 acres at 6/10/2021 2058



- Drop Point
- Lookout
- Value at Risk
- Gate
- Bridge
- ⚠ Hazard
- IR Isolated Heat Source
- Structure
- Defensible - Stand Alone
- Defensible - Prep and Hold
- Non-Defensible - Prep and Leave
- Unknown
- Completed Hand Line
- Completed Mixed Construction Line
- Completed Road as Line
- Access or Improved Road
- Fire Edge
- Contained Line
- Wildfire Daily Fire Perimeter
- IR Heat Perimeter
- IR Intense Heat
- IR Scattered Heat
- Highway or Major Connecting Road
- Local Road
- Road
- County or Equivalent
- Township/Range
- Section
- BLM
- Private
- State
- USFS
- Structure
- USFS Boundary
- Fire History



STRUCTURE

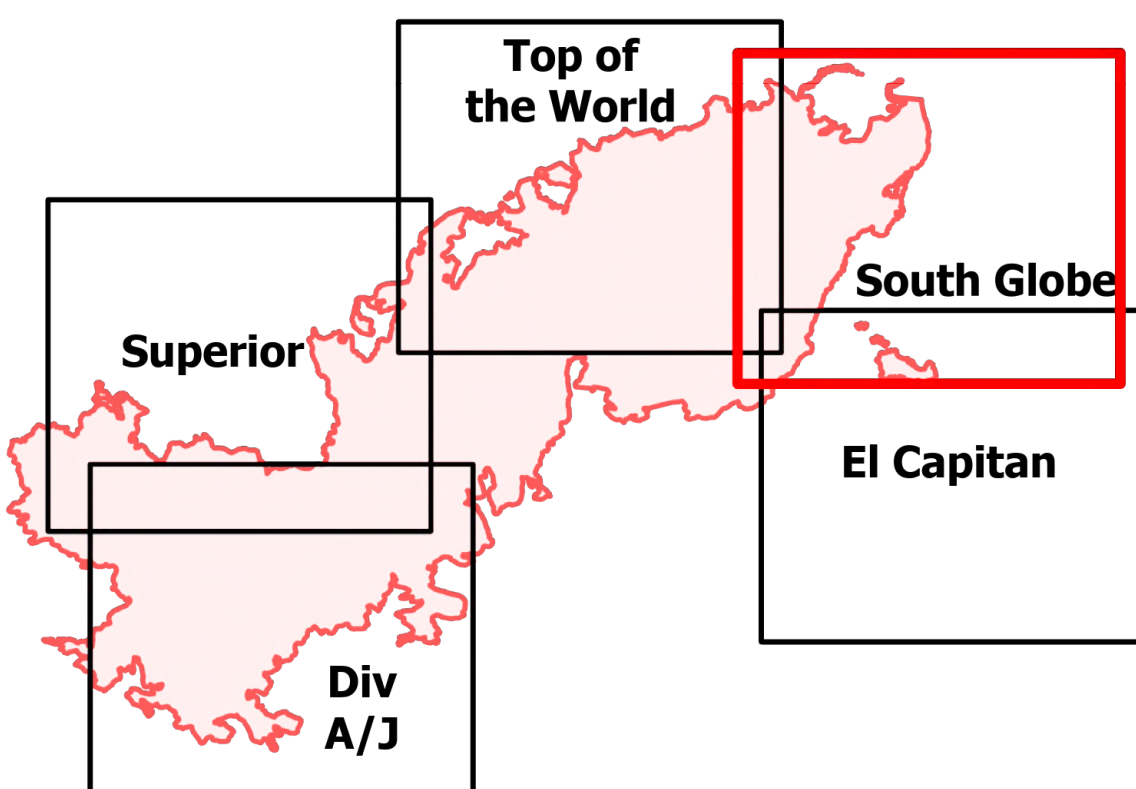
South Globe Vicinity

Telegraph

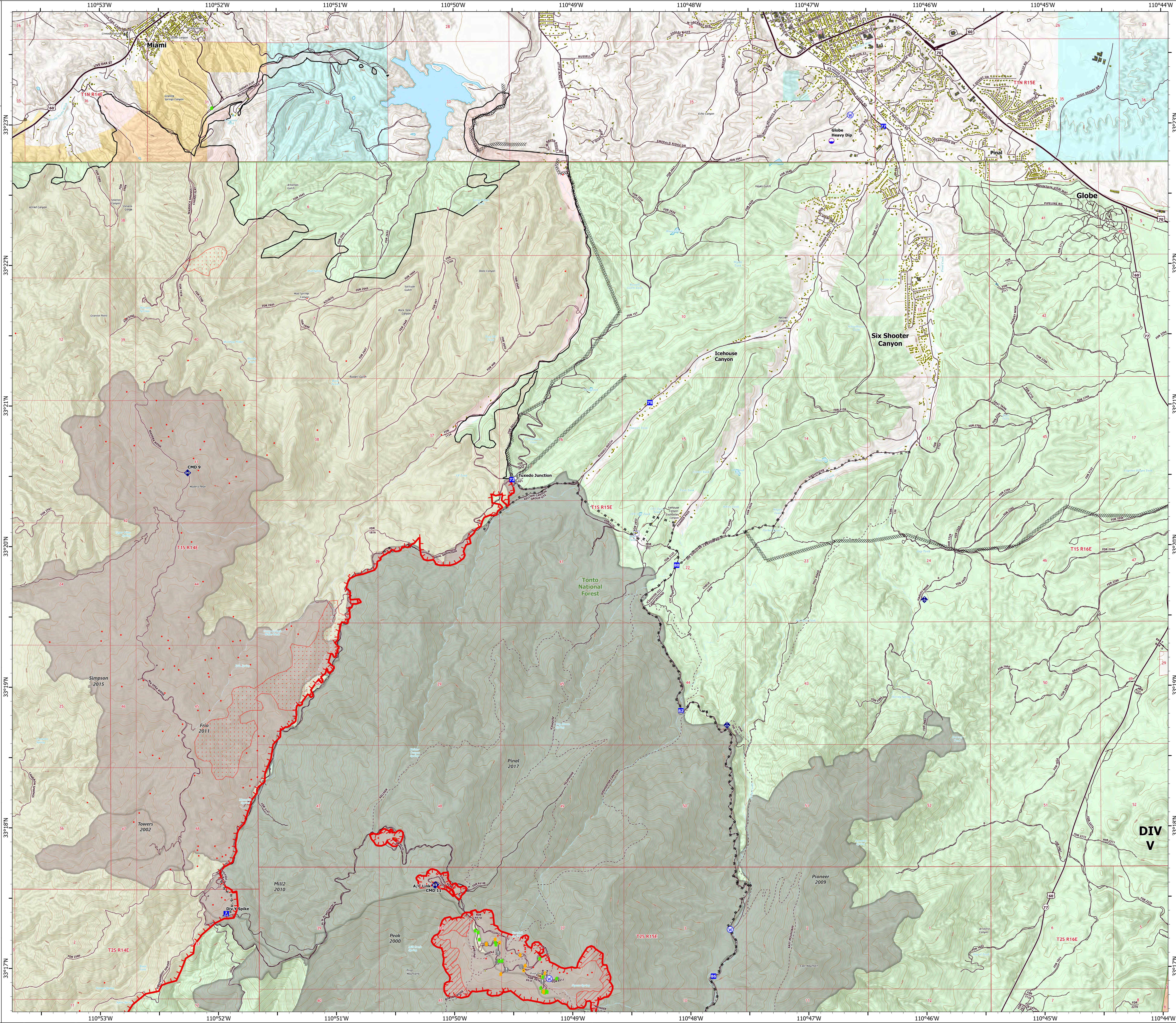
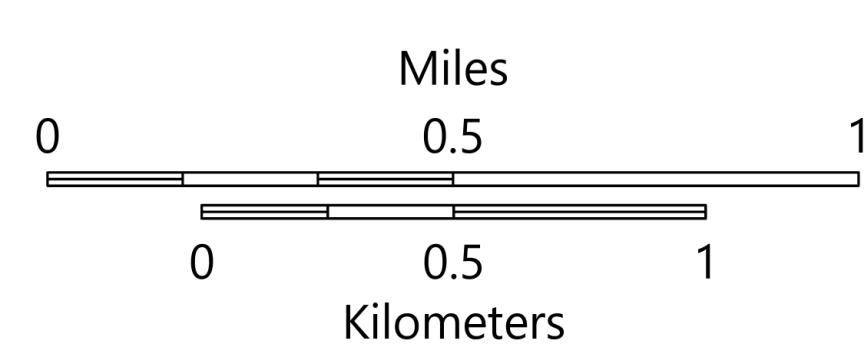
AZ-TNF-1255

6/12/2021

86,529 acres at 6/10/2021 2058



- Pump
- Dip Site
- Drop Point
- Camp
- Value at Risk
- Landmark
- Bridge
- Mobile Weather Unit
- Repeater
- Water Source
- IR Isolated Heat Source
- Structure
- Defensible - Stand Alone
- Defensible - Prep and Hold
- Unknown
- Completed Dozer Line
- Completed Hand Line
- Completed Mixed Construction Line
- Completed Road as Line
- Fire Edge
- Contained Line
- Wildfire Daily Fire Perimeter
- IR Heat Perimeter
- IR Intense Heat
- IR Scattered Heat
- Highway or Major Connecting Road
- Local Connecting Road
- Local Road
- Road
- County or Equivalent
- Township/Range
- Section
- BLM
- Indian Lands
- Private
- State
- USFS
- Structure
- USFS Boundary
- Fire History



DIV V

STRUCTURE

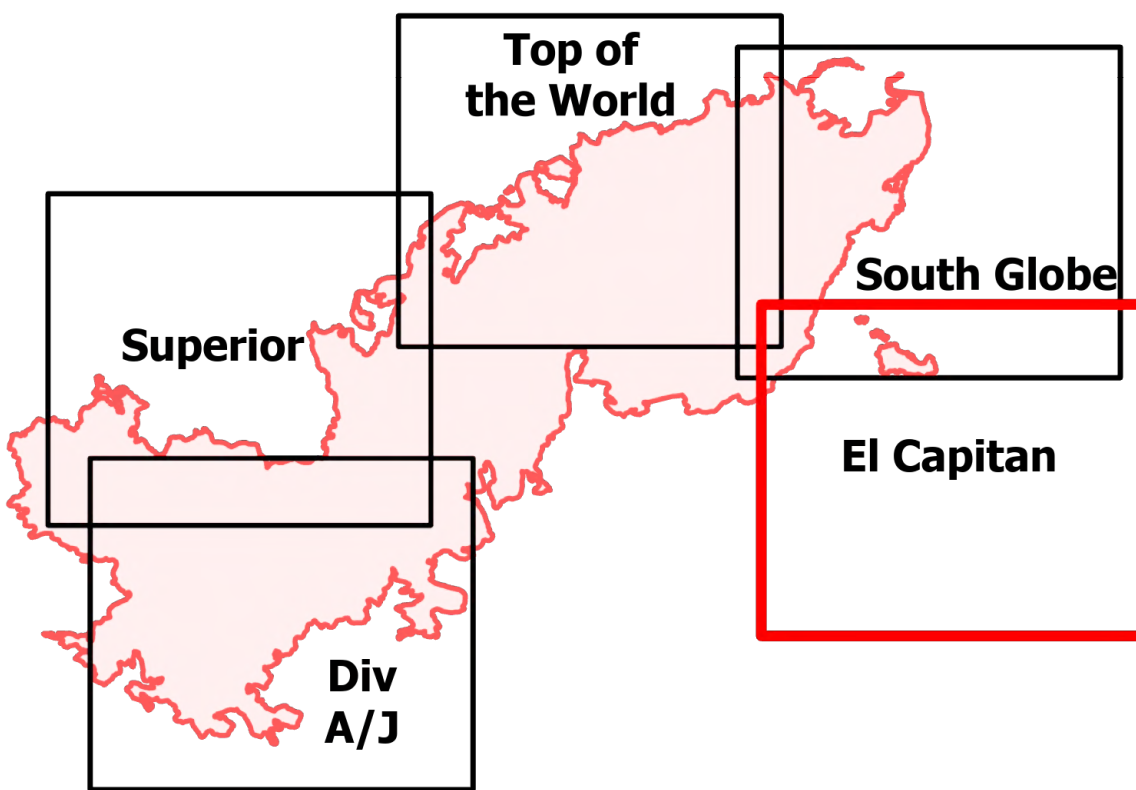
El Capitan Vicinity

Telegraph

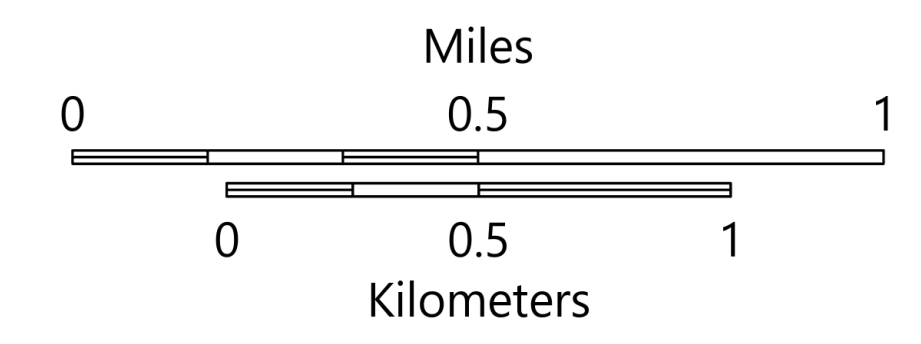
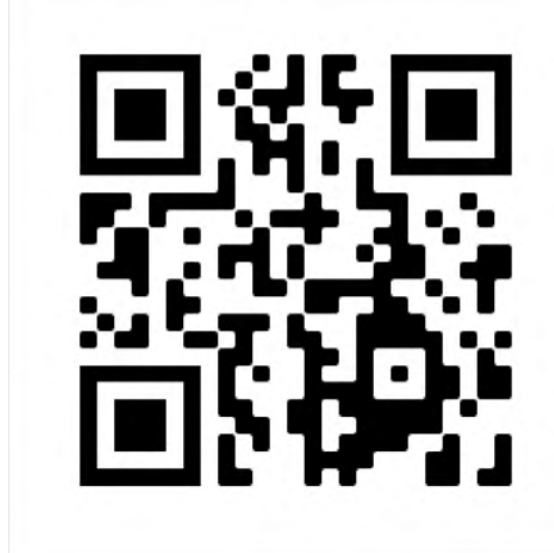
AZ-TNF-1255

6/12/2021

86,529 acres at 6/10/2021 2058



- Dip Site
- Division Break
- Drop Point
- Camp
- Value at Risk
- Gate
- Repeater
- Hazard
- Water Source
- IR Isolated Heat Source
- Structure
- Defensible - Stand Alone
- Defensible - Prep and Hold
- Non-Defensible - Prep and Leave
- Non-Defensible - Rescue Drive-By
- Unknown
- Completed Dozer Line
- Completed Hand Line
- Completed Mixed Construction Line
- Fire Edge
- Contained Line
- Wildfire Daily Fire Perimeter
- IR Heat Perimeter
- IR Intense Heat
- Local Connecting Road
- Local Road
- Road
- County or Equivalent
- Township/Range
- Section
- BLM
- Indian Lands
- Private
- State
- USFS
- Structure
- USFS Boundary
- Fire History



1:15,000 - SWA/IMT2 - 6/11/2021 2105
Acres from GIS (geodesic)
North American 1983 Datum, LatLong Grid

