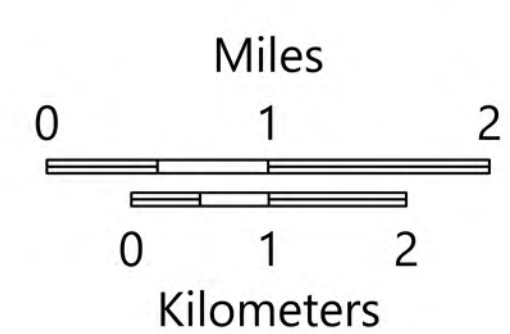
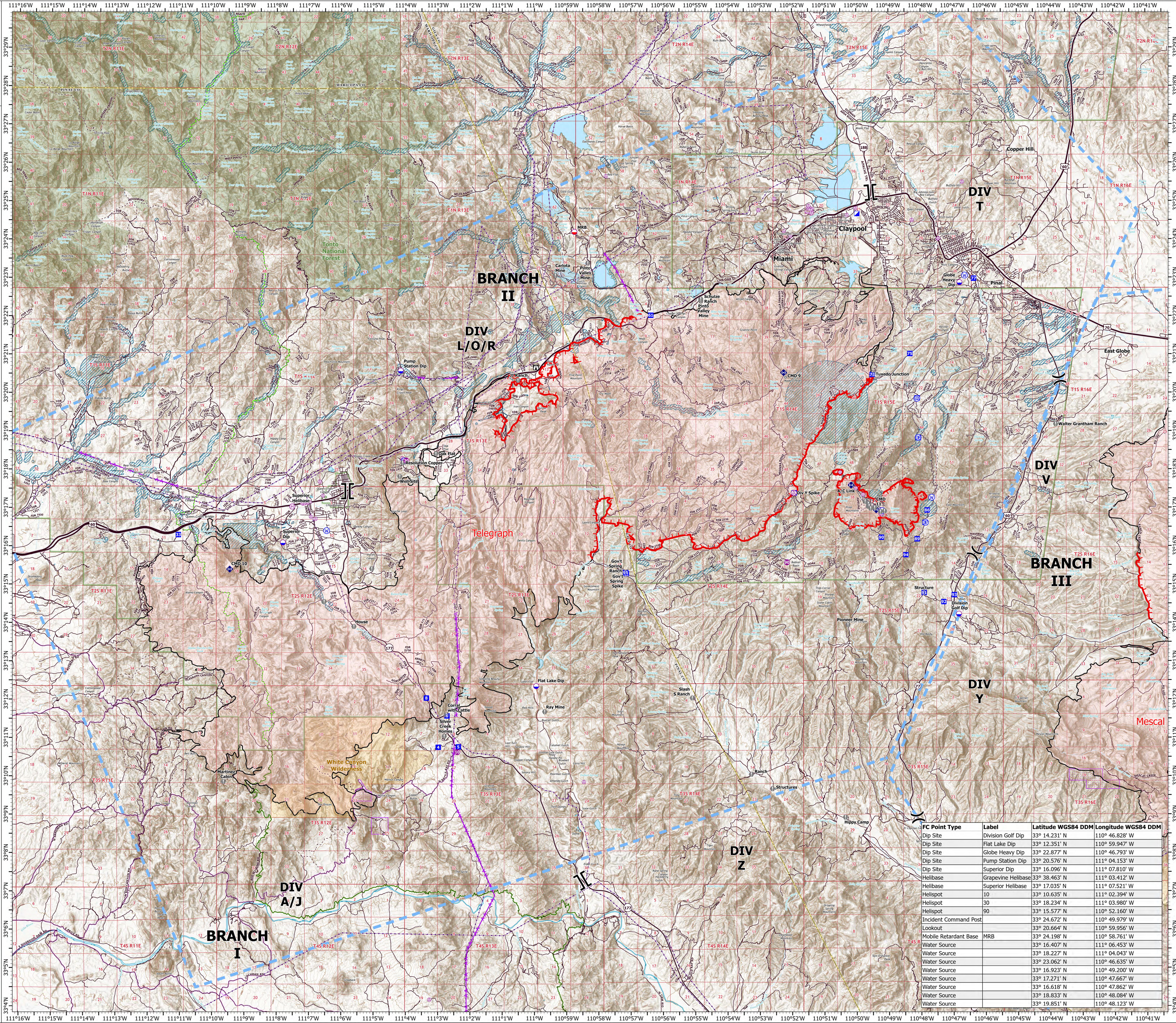


# AIROPS

Telegraph  
AZ-TNF-1255  
6/13/2021

88,155 acres at 6/12/2021 2038

- Aerial Hazard
- Dip Site
- Mobile Retardant Base
- Helispot
- Helibase
- Division Break
- Branch Break
- Incident Command Post
- Drop Point
- Camp
- Lookout
- Value at Risk
- Landmark
- Repeater
- Water Source
- Aerial Hazard
- Temporary Flight Restriction
- Fire Edge
- Contained Line
- Transmission Lines
- Wildfire Daily Fire Perimeter
- Highway or Major Connecting Road
- Local Connecting Road
- Local Road
- Road
- Trail
- Arizona Trail
- Middle Gila Access Route
- County or Equivalent
- Township/Range
- Section
- USFS Wilderness Area
- Wilderness Area Boundary
- Federal Land within Wilderness Area
- BLM Area of Critical Environmental Concern
- USFS Boundary
- Retardant Avoidance



FC Point Type	Label	Latitude WGS84 DDM	Longitude WGS84 DDM
Dip Site	Division Golf Dip	33° 14.231' N	110° 46.828' W
Dip Site	Flat Lake Dip	33° 12.351' N	110° 59.947' W
Dip Site	Globe Heavy Dip	33° 22.877' N	110° 46.793' W
Dip Site	Pump Station Dip	33° 20.576' N	111° 04.153' W
Dip Site	Superior Dip	33° 16.096' N	111° 07.810' W
Helibase	Grapevine Helibase	33° 38.463' N	111° 03.412' W
Helibase	Superior Helibase	33° 17.035' N	111° 07.521' W
Helispot	10	33° 10.635' N	111° 02.394' W
Helispot	30	33° 18.234' N	111° 03.980' W
Helispot	90	33° 15.577' N	110° 52.160' W
Incident Command Post		33° 24.672' N	110° 49.979' W
Lookout		33° 20.664' N	110° 59.956' W
Mobile Retardant Base	MRB	33° 24.198' N	110° 58.761' W
Water Source		33° 16.407' N	111° 06.453' W
Water Source		33° 18.227' N	111° 04.043' W
Water Source		33° 23.062' N	110° 46.635' W
Water Source		33° 16.923' N	110° 49.200' W
Water Source		33° 17.271' N	110° 47.667' W
Water Source		33° 16.618' N	110° 47.862' W
Water Source		33° 18.833' N	110° 48.084' W
Water Source		33° 19.851' N	110° 48.123' W