

# OPERATIONS

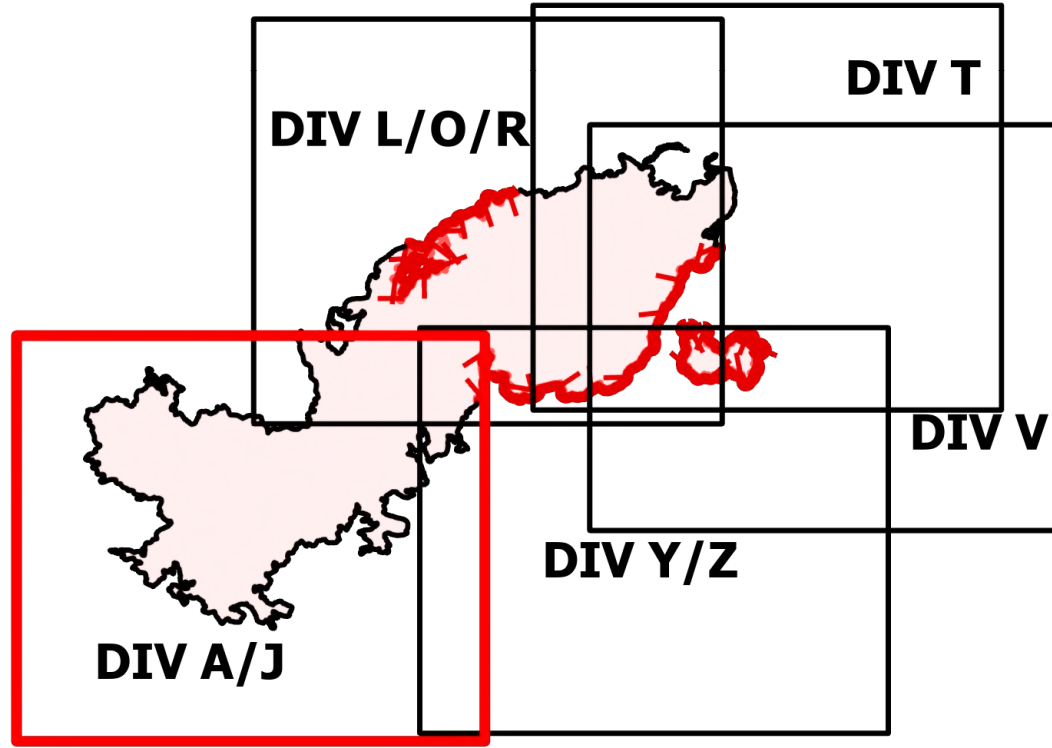
DIV A/J

Telegraph

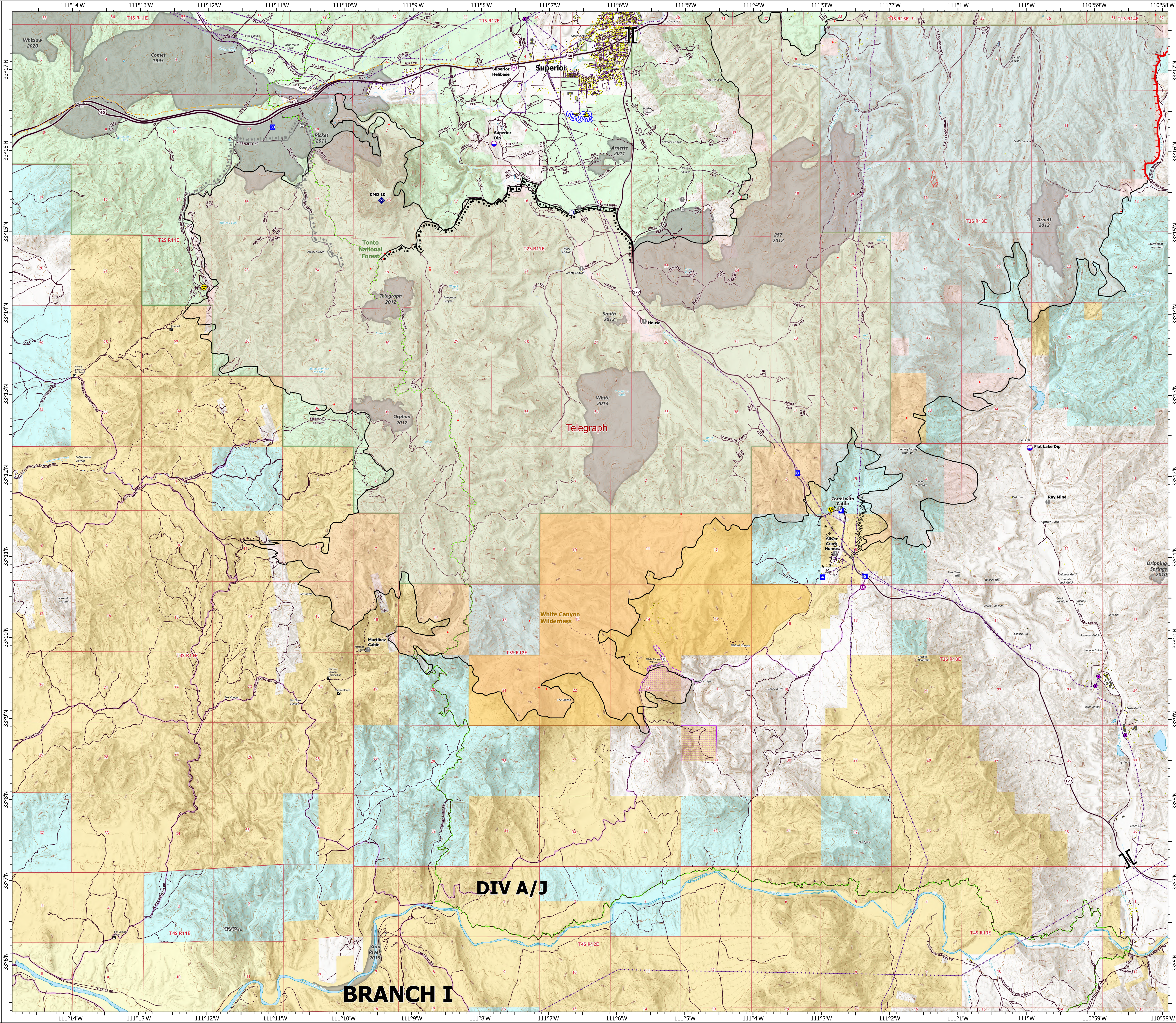
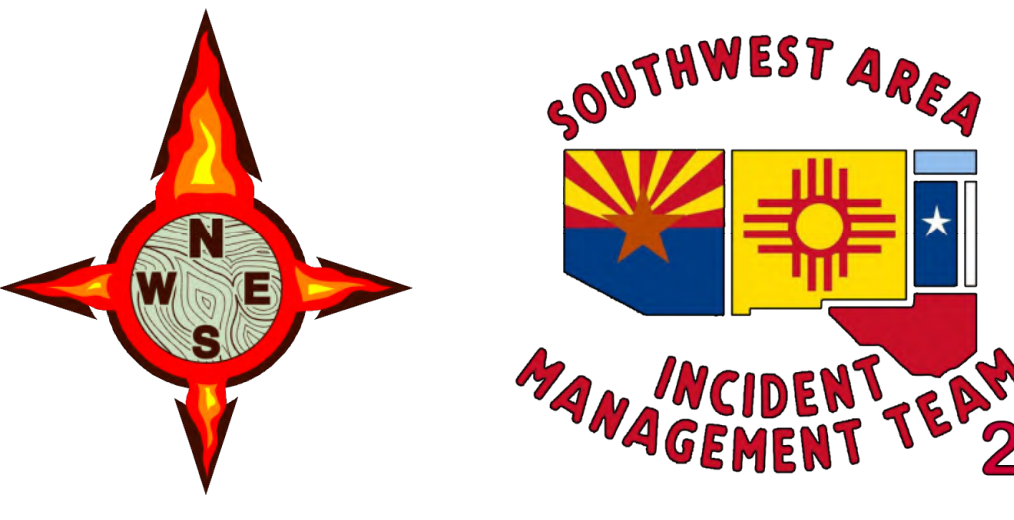
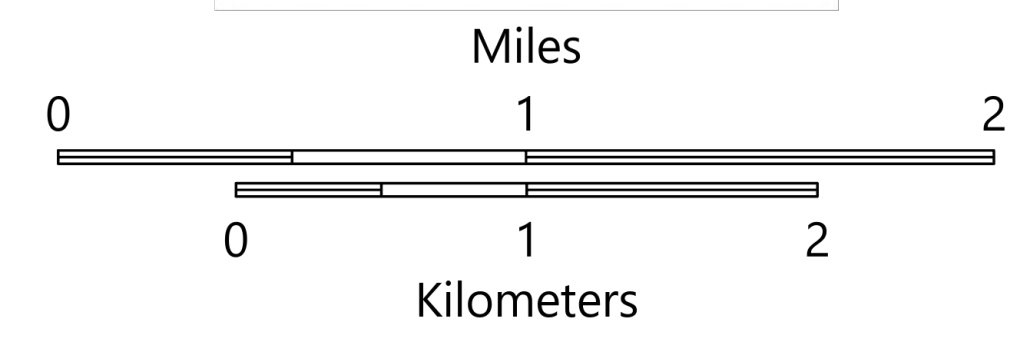
AZ-TNF-1255

6/13/2021

88,155 acres at 6/12/2021 2038



- Structure
- Substations
- Trailhead
- BLM Planned Portal Sites
- Point of Interest
- Trailhead
- Dip Site
- Helispot
- Helibase
- Branch Break
- Drop Point
- Value at Risk
- Gate
- Repeater
- Safety Zone
- Hazard
- Water Source
- Water Tank
- IR Isolated Heat Source
- Completed Burnout
- MW Completed Fuel Break
- Completed Hand Line
- Planned Burnout
- Planned Road as Line
- Fire Edge
- Contained Line
- IR Heat Perimeter
- IR Intense Heat
- Wildfire Daily Fire Perimeter
- Highway or Major Connecting Road
- Local Connecting Road
- Local Road
- Tonto National Forest Roads
- Tonto National Forest Trails
- Road
- Trail
- Arizona Trail
- Middle Gila Access Route
- Transmission Lines
- Oil and Natural Gas Pipelines
- APS Distribution Overhead Infrastructure
- Structure
- USFS Boundary
- County or Equivalent
- BLM Area of Critical Environmental Concern
- Wilderness Area Boundary
- Federal Land within Wilderness Area
- Township/Range
- Section
- Fire History
- BLM
- BR
- Private
- State
- USFS



# OPERATIONS

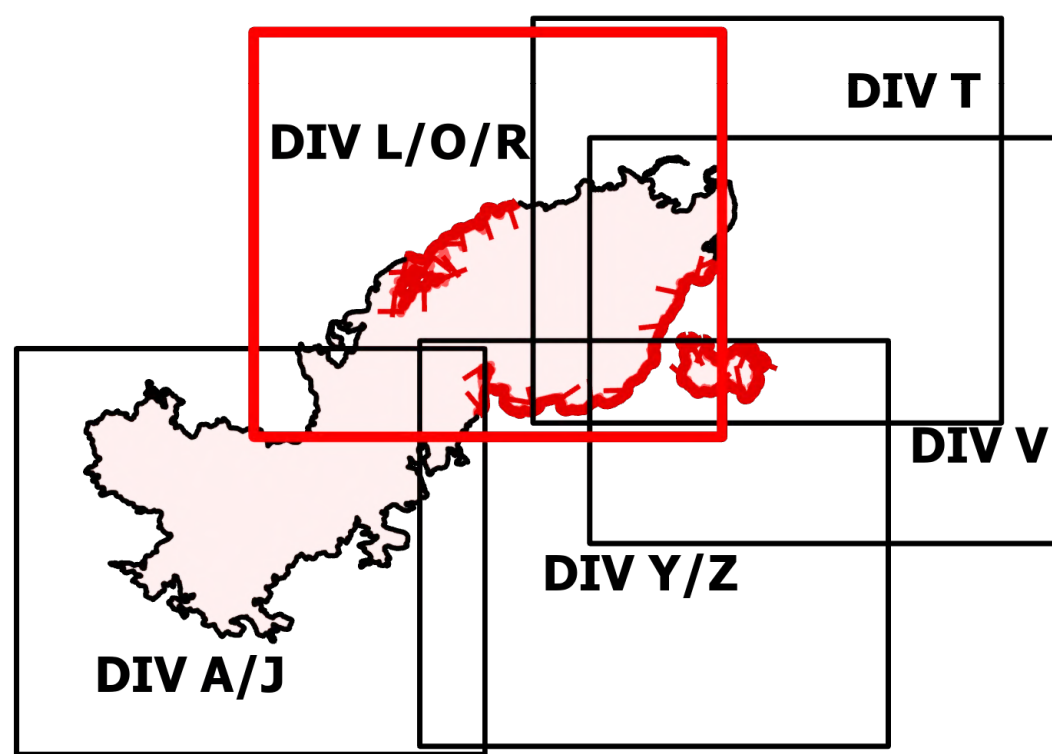
DIV L/O/R

Telegraph

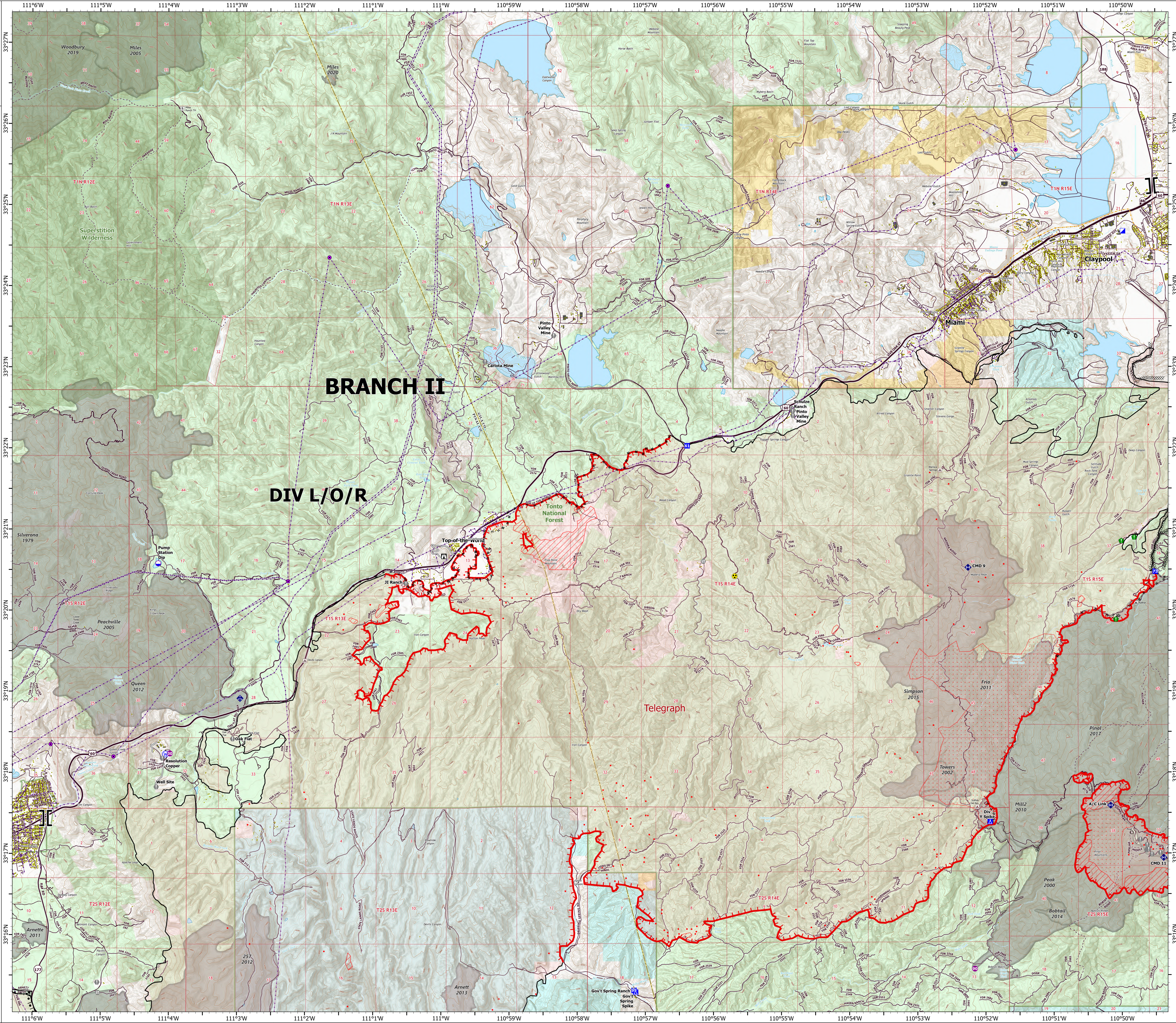
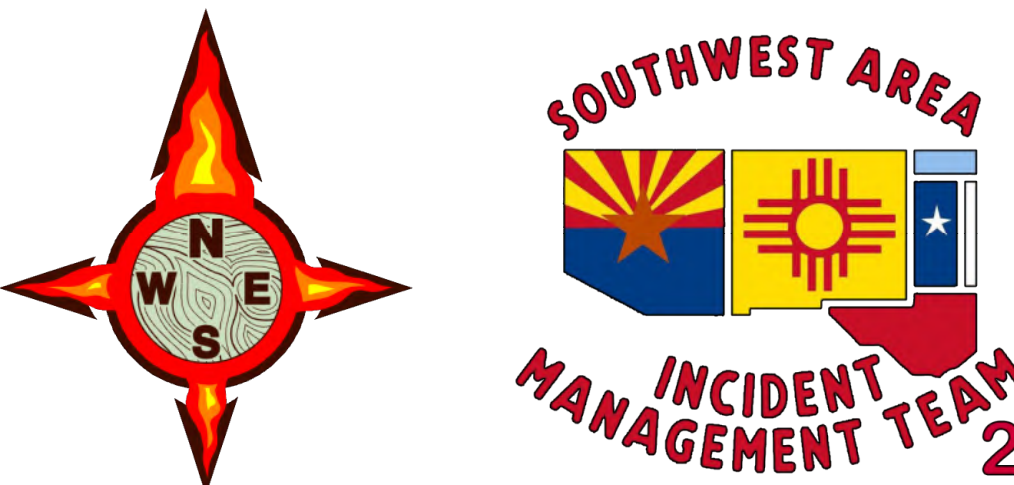
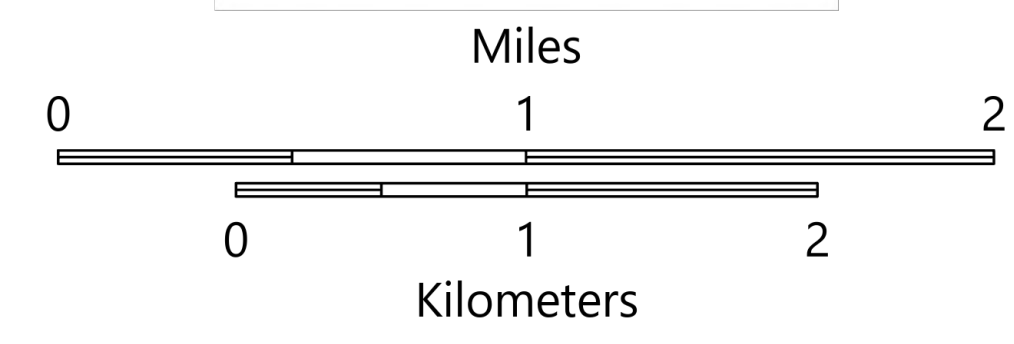
AZ-TNF-1255

6/13/2021

88,155 acres at 6/12/2021 2038



- Structure
- Substations
- ▲ Campground
- ▲ Recreation Residence
- ⊠ Trailhead
- Dip Site
- Helispot
- ⊠ Branch Break
- ⊠ Incident Command Post
- Drop Point
- ▲ Camp
- ▲ Lookout
- Value at Risk
- Landmark
- Gate
- Bridge
- Resource Location
- Mobile Weather Unit
- Repeater
- Hazard
- Water Source
- IR Isolated Heat Source
- Completed Burnout
- Completed Dozer Line
- Completed Hand Line
- Completed Mixed Construction Line
- Completed Road as Line
- Planned Road as Line
- Access or Improved Road
- Fire Edge
- Contained Line
- IR Heat Perimeter
- IR Intense Heat
- IR Scattered Heat
- Wildfire Daily Fire Perimeter
- Highway or Major Connecting Road
- Local Connecting Road
- Local Road
- Tonto National Forest Roads
- Tonto National Forest Trails
- Road
- Transmission Lines
- Oil and Natural Gas Pipelines
- APS Distribution Overhead Infrastructure
- Structure
- USFS Boundary
- County or Equivalent
- Township/Range
- Section
- Fire History
- USFS Wilderness Area
- BLM
- Private
- State
- USFS



# OPERATIONS

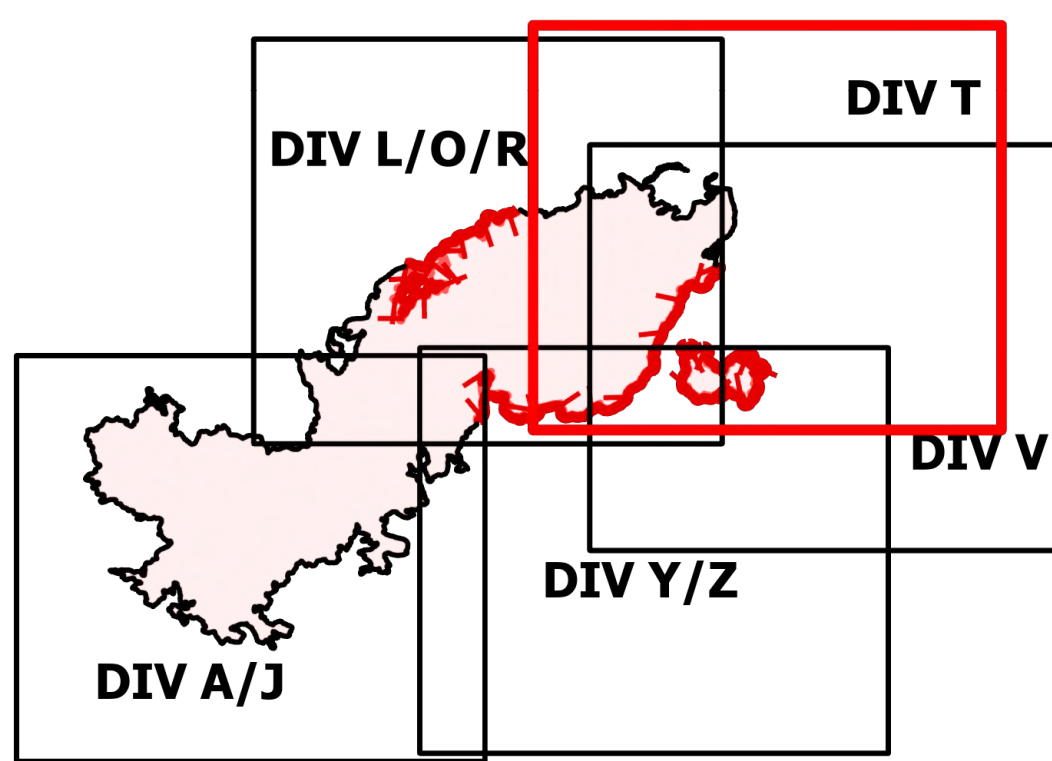
DIV T

Telegraph

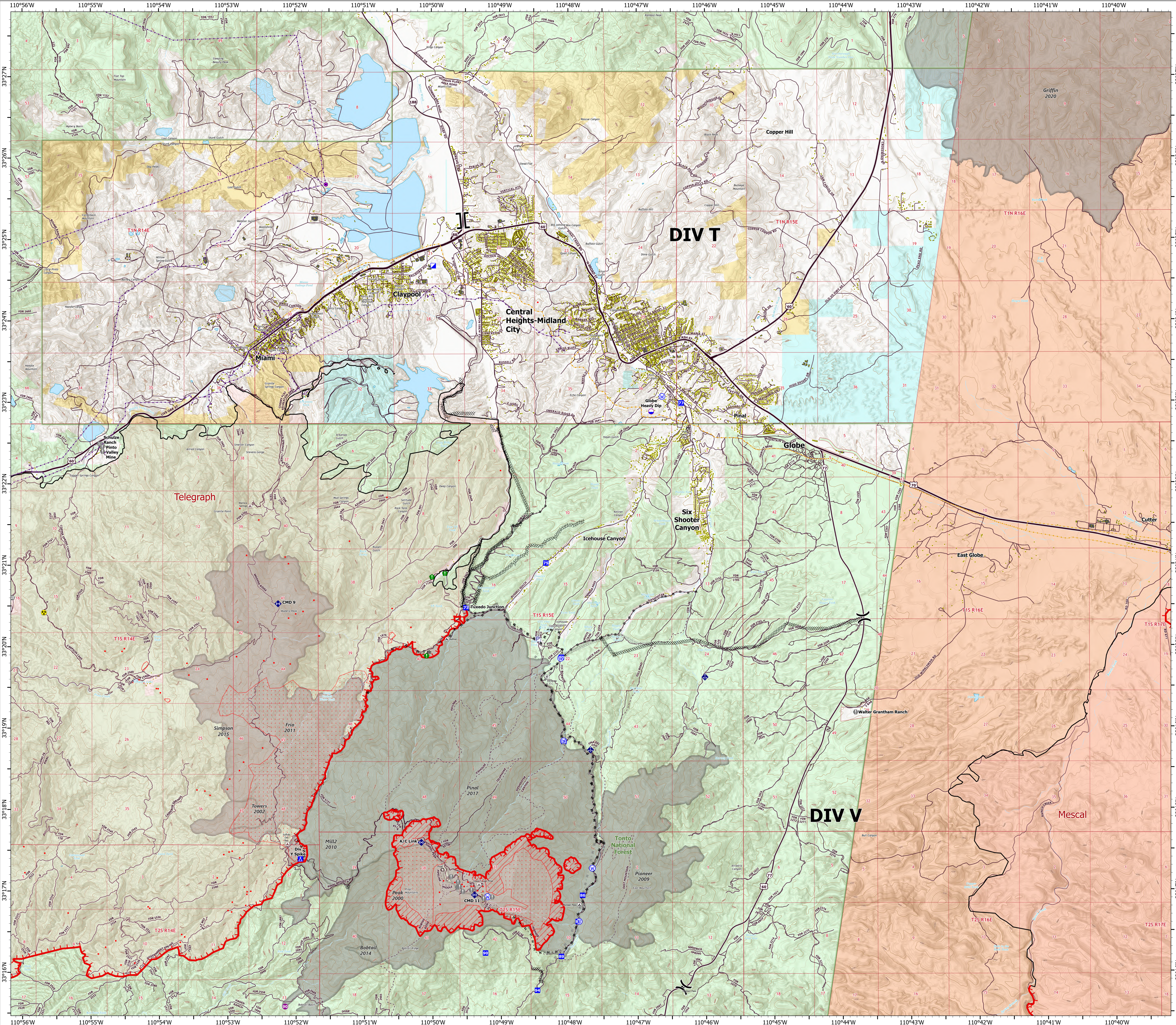
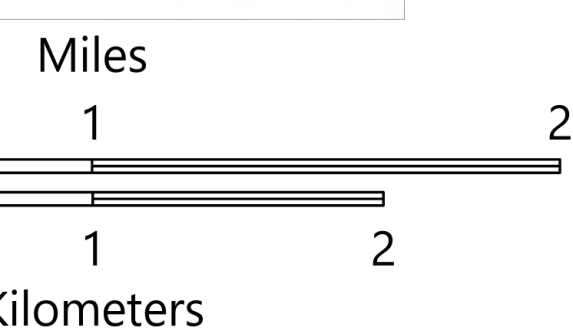
AZ-TNF-1255

6/13/2021

88,155 acres at 6/12/2021 2038



- Structure
- Substations
- ▲ Campground
- ▲ District Office
- ▲ Recreation Residence
- ⊠ Trailhead
- ⊠ Other
- Dip Site
- Helispot
- ⊠ Division Break
- ⊠ Branch Break
- ▲ Incident Command Post
- ▲ Drop Point
- ▲ Camp
- Value at Risk
- Landmark
- Gate
- Bridge
- Resource Location
- Mobile Weather Unit
- Repeater
- Hazard
- Water Source
- Pump
- IR Isolated Heat Source
- ⊠ Completed Dozer Line
- ⊠ Completed Hand Line
- ⊠ Completed Mixed Construction Line
- ⊠ Completed Road as Line
- ⊠ Planned Dozer Line
- ⊠ Planned Mixed Construction Line
- ⊠ Planned Road as Line
- ⊠ Fire Edge
- ⊠ Contained Line
- ⊠ IR Heat Perimeter
- ⊠ IR Intense Heat
- ⊠ IR Scattered Heat
- ⊠ Wildfire Daily Fire Perimeter
- ⊠ Highway or Major Connecting Road
- ⊠ Local Connecting Road
- ⊠ Local Road
- ⊠ Tonto National Forest Roads
- ⊠ Tonto National Forest Trails
- ⊠ Road
- ⊠ Transmission Lines
- ⊠ Oil and Natural Gas Pipelines
- ⊠ APS Distribution Overhead Infrastructure
- ⊠ Structure
- ⊠ USFS Boundary
- ⊠ County or Equivalent
- ⊠ Township/Range
- ⊠ Section
- ⊠ Fire History
- ⊠ BLM
- ⊠ Indian Lands
- ⊠ Private
- ⊠ State
- ⊠ USFS



# OPERATIONS

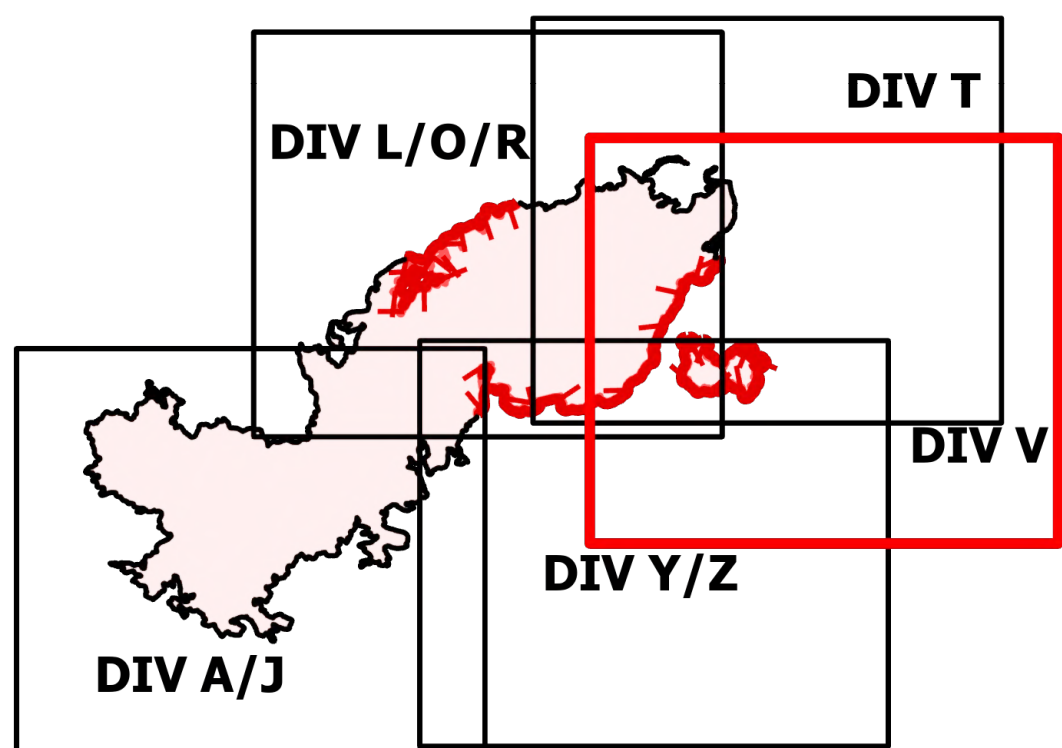
## DIV V

Telegraph

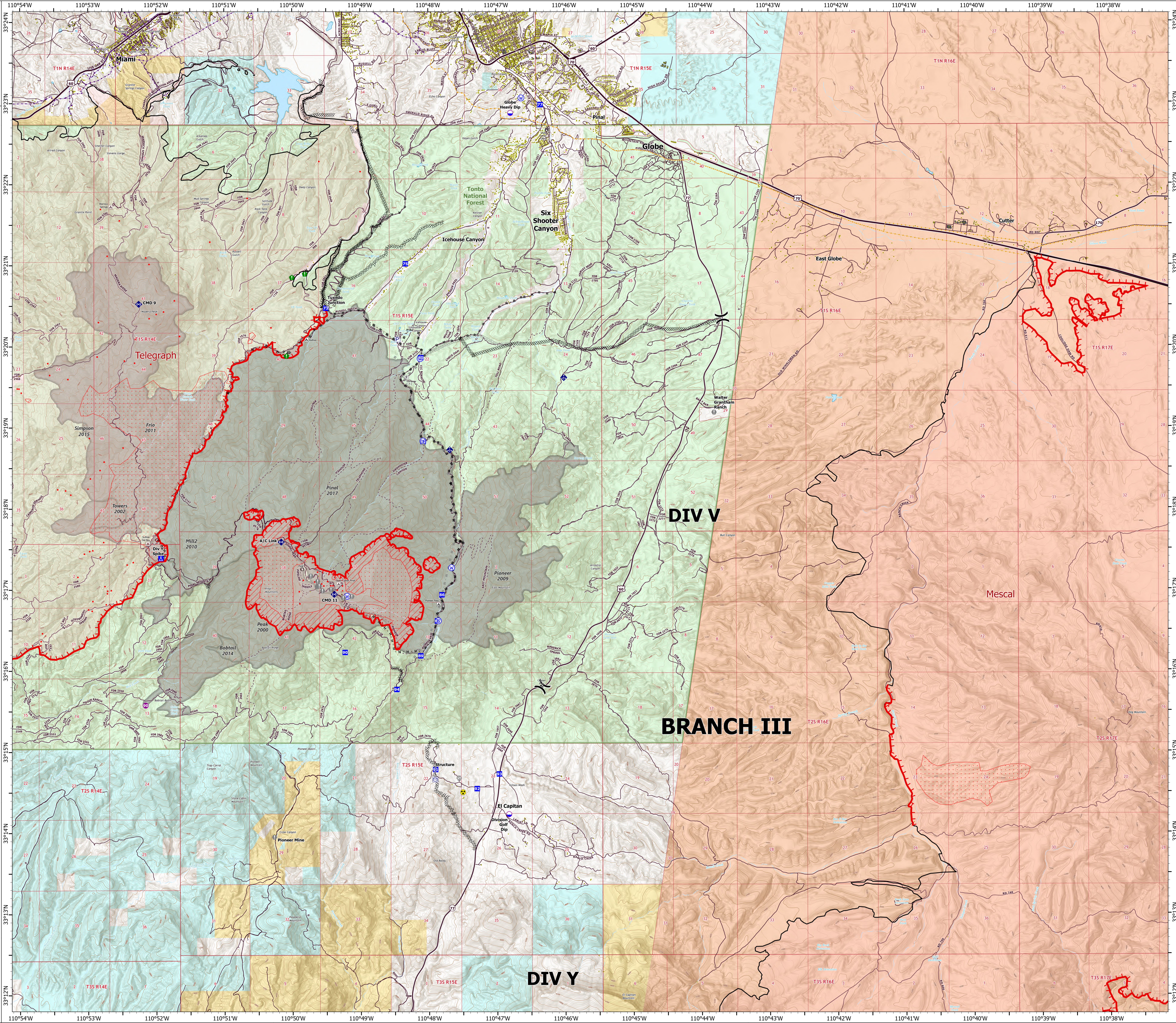
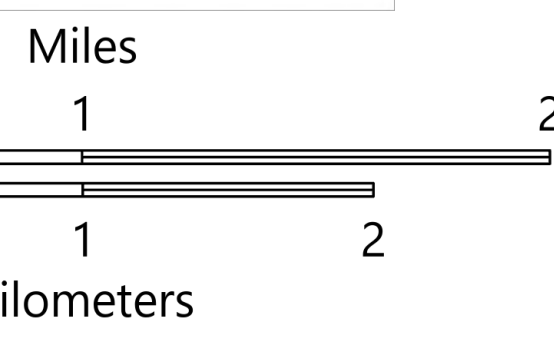
AZ-TNF-1255

6/13/2021

88,155 acres at 6/12/2021 2038



- Structure
- ▲ Campground
- 🏢 District Office
- 🏠 Recreation Residence
- 🚶 Trailhead
- ⚡ Other
- 📍 Dip Site
- 🚁 Helipad
- ⌋ Division Break
- 📍 Drop Point
- 🏕 Camp
- ⚠ Value at Risk
- 📍 Landmark
- 🚪 Gate
- 🌉 Bridge
- 📍 Resource Location
- 📍 Mobile Weather Unit
- 📍 Repeater
- ⚠ Hazard
- 📍 Water Source
- 📍 Pump
- 📍 Water Tank
- IR Isolated Heat Source
- ⊘ Completed Dozer Line
- ⊘ Completed Hand Line
- ⊘ Completed Mixed Construction Line
- ⊘ Completed Road as Line
- ⊘ Planned Dozer Line
- ⊘ Planned Mixed Construction Line
- ⊘ Planned Road as Line
- Fire Edge
- Contained Line
- IR Heat Perimeter
- IR Intense Heat
- IR Scattered Heat
- Wildfire Daily Fire Perimeter
- Highway or Major Connecting Road
- Local Connecting Road
- Local Road
- Tonto National Forest Roads
- Tonto National Forest Trails
- Road
- Oil and Natural Gas Pipelines
- APS Distribution Overhead Infrastructure
- Structure
- USFS Boundary
- County or Equivalent
- Township/Range
- Section
- Fire History
- BLM
- Indian Lands
- Private
- State
- USFS



# OPERATIONS

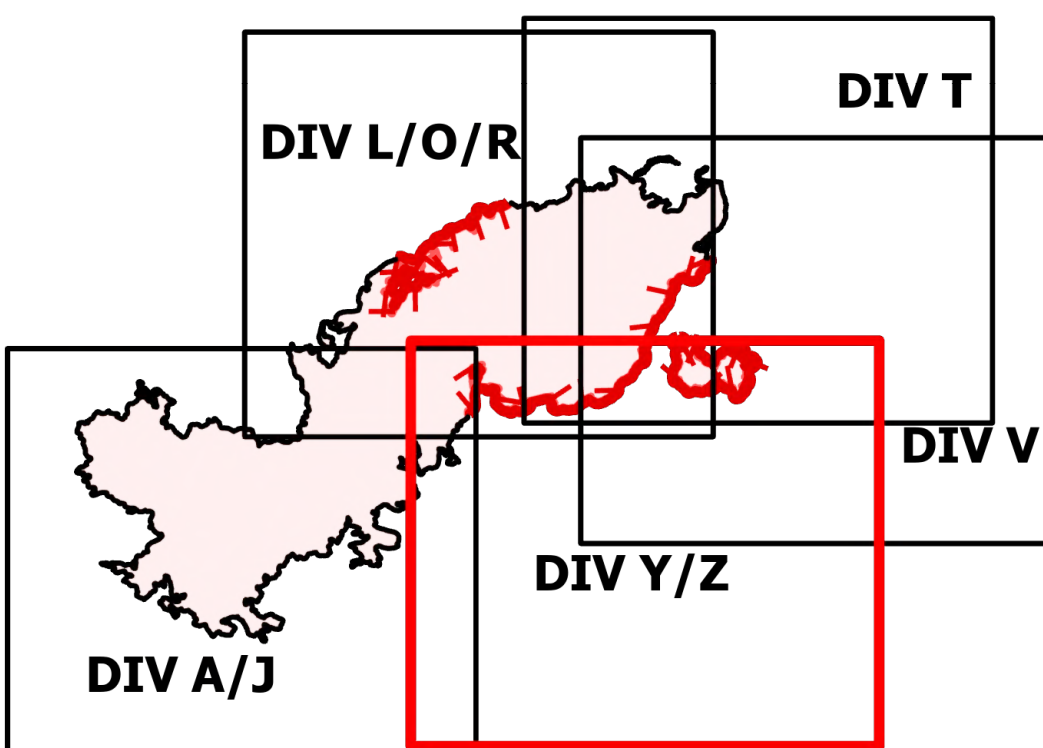
DIV Y/Z

Telegraph

AZ-TNF-1255

6/13/2021

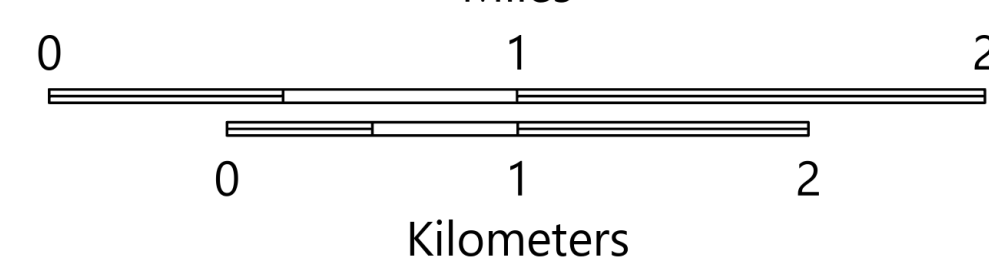
88,155 acres at 6/12/2021 2038



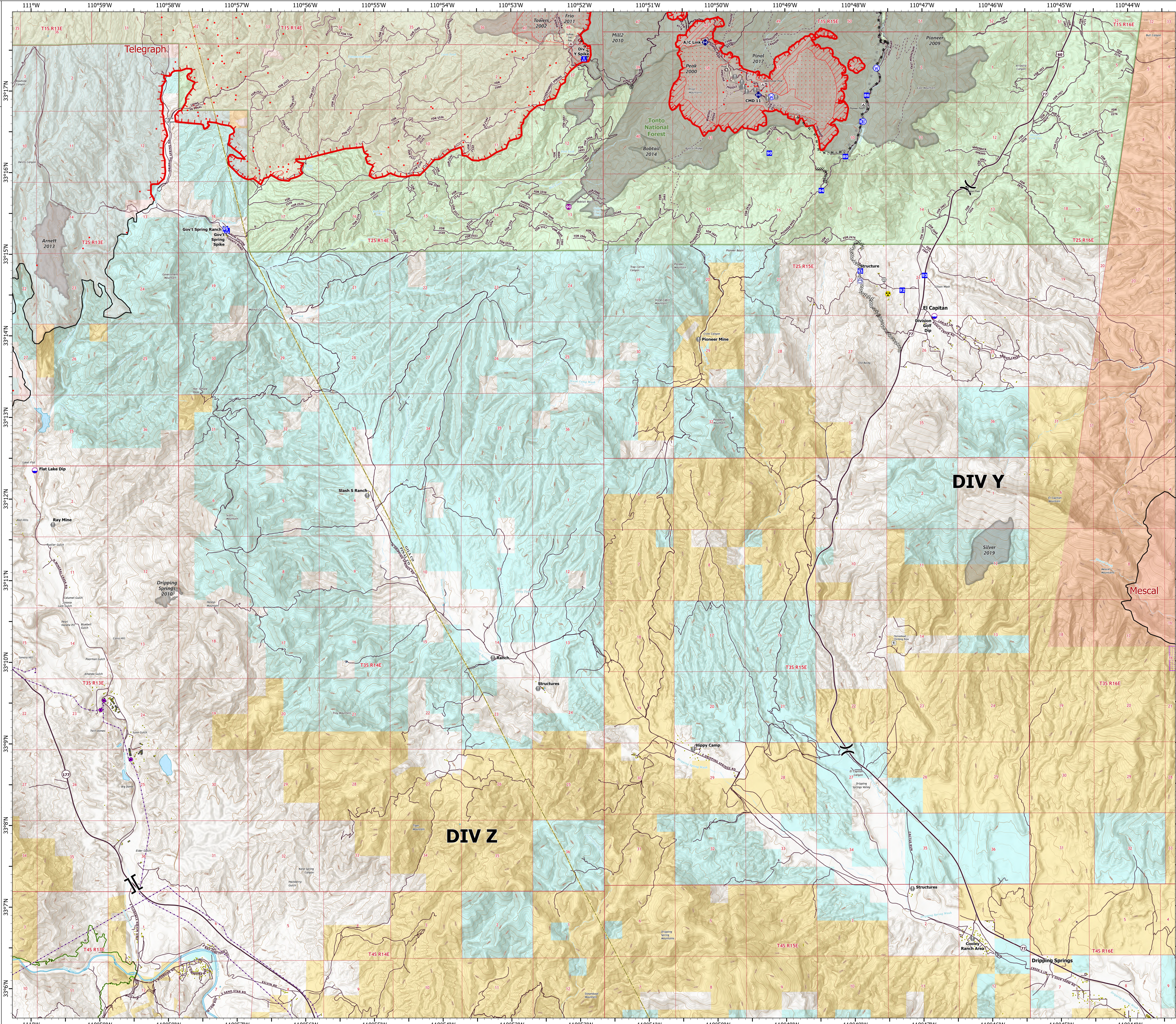
- Structure
- Substations
- ▲ Campground
- ⊠ Recreation Residence
- ⊠ Other
- Trailhead
- Dip Site
- Hellsite
- ⌋ Division Break
- ⌋ Branch Break
- Drop Point
- ⊠ Camp
- Value at Risk
- Gate
- Repeater
- Hazard
- Water Source
- Water Tank
- IR Isolated Heat Source
- ⊠ Completed Dozer Line
- ⊠ Completed Hand Line
- ⊠ Completed Mixed Construction Line
- ⊠ Completed Road as Line
- ⊠ Planned Mixed Construction Line
- ⊠ Fire Edge
- ⊠ Contained Line
- ⊠ IR Heat Perimeter
- ⊠ IR Intense Heat
- ⊠ IR Scattered Heat
- ⊠ Wildfire Daily Fire Perimeter
- Local Connecting Road
- Local Road
- Tonto National Forest Roads
- Tonto National Forest Trails
- Road
- Trail
- Arizona Trail
- Transmission Lines
- APS Distribution Overhead Infrastructure
- Structure
- USFS Boundary
- County or Equivalent
- BLM Area of Critical Environmental Concern
- Township/Range
- Section
- Fire History
- BLM
- Indian Lands
- Private
- State
- USFS



Miles



Kilometers



DIV Z

DIV Y