

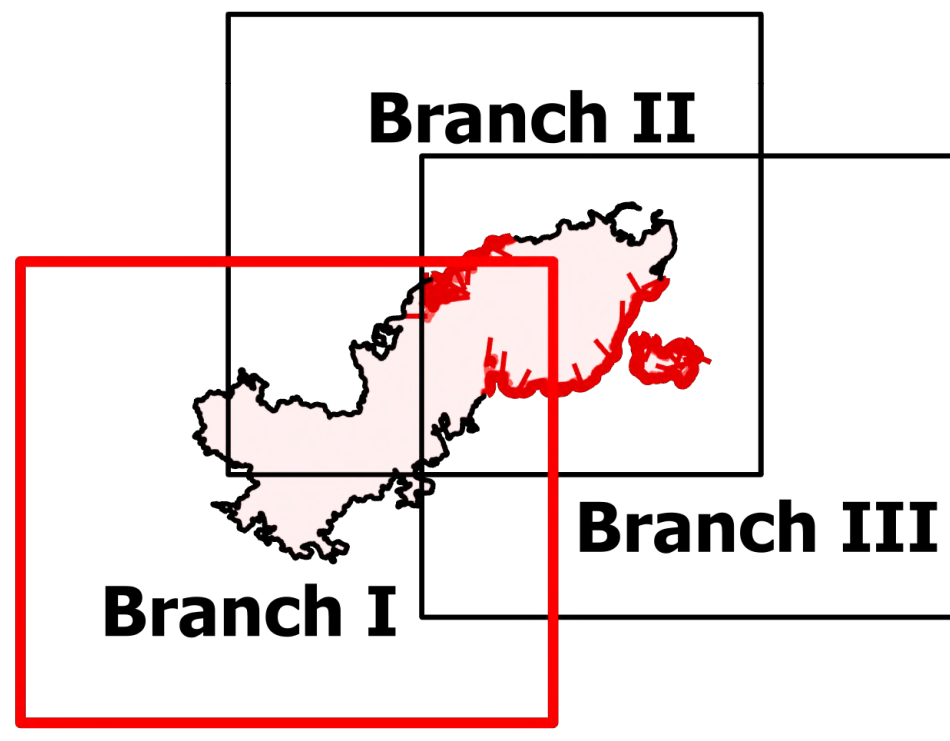
OPERATIONS

Branch I
Telegraph

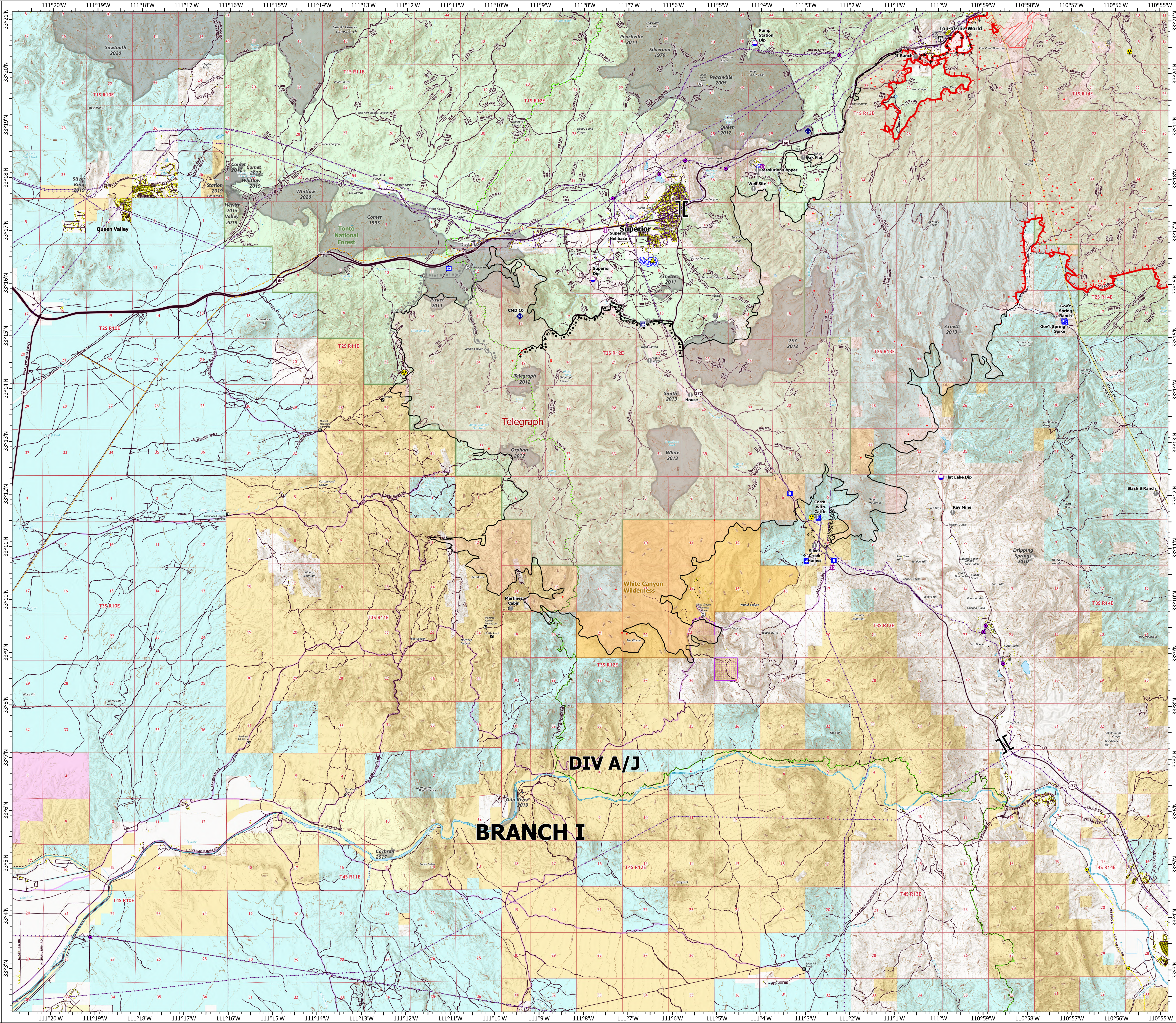
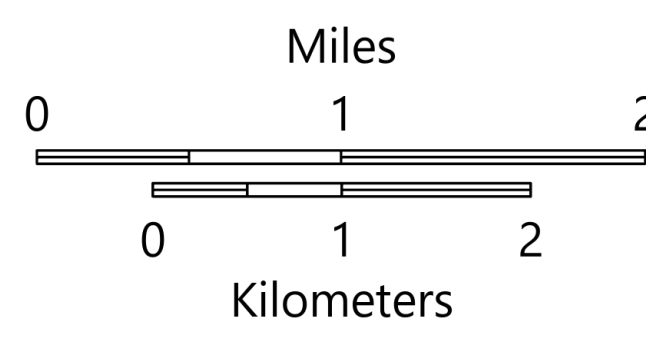
AZ-TNF-1255

6/13/2021

88,155 acres at 6/12/2021 2038



- Structure
- Substations
- Gas Facility
- Campground
- Trailhead
- BLM Planned Portal Sites
- Point of Interest
- Trailhead
- Dip Site
- Helipad
- Helibase
- Branch Break
- Drop Point
- Camp
- Lookout
- Value at Risk
- Gate
- Mobile Weather Unit
- Repeater
- Safety Zone
- Hazard
- Water Source
- Water Tank
- IR Isolated Heat Source
- Completed Burnout
- Completed Fuel Break
- Completed Hand Line
- Completed Mixed Construction Line
- Completed Road as Line
- Planned Burnout
- Planned Road as Line
- Access or Improved Road
- Fire Edge
- Contained Line
- IR Heat Perimeter
- IR Intense Heat
- Wildfire Daily Fire Perimeter
- Highway or Major Connecting Road
- Local Connecting Road
- Local Road
- Tonto National Forest Roads
- Tonto National Forest Trails
- Road
- Trail
- Arizona Trail
- Middle Gila Access Route
- Transmission Lines
- APS Distribution Overhead Infrastructure
- Gas Line
- Oil and Natural Gas Pipelines
- Structure
- USFS Boundary
- County or Equivalent
- BLM Area of Critical Environmental Concern
- Wilderness Area Boundary
- Federal Land within Wilderness Area
- Township/Range
- Section
- Fire History
- BLM
- BR
- County
- Military
- Private
- State
- USFS



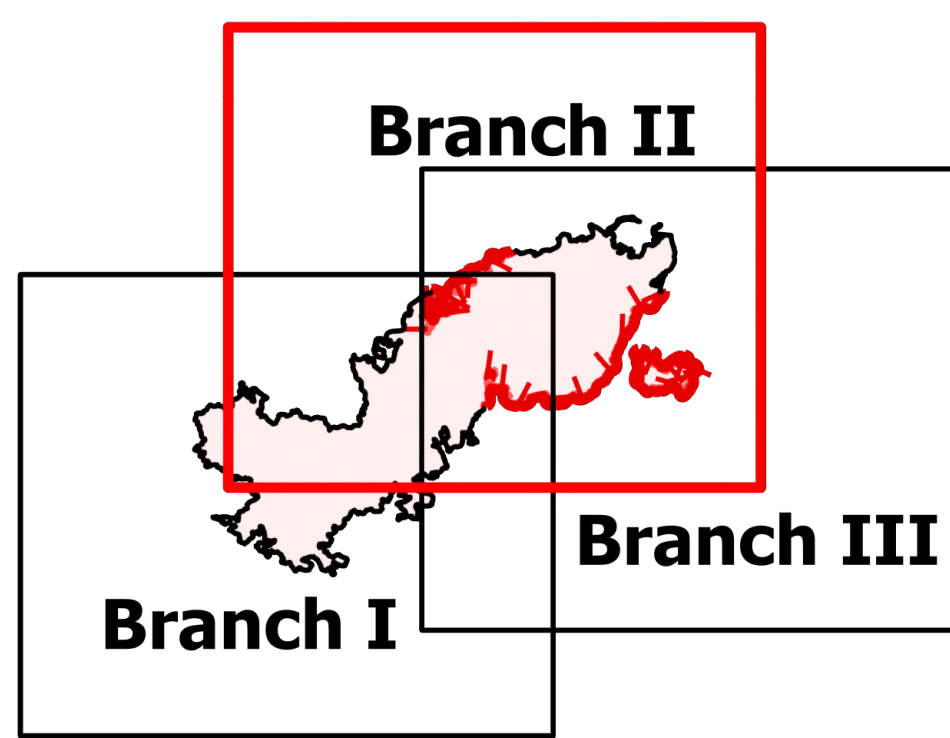
OPERATIONS

Branch II
Telegraph

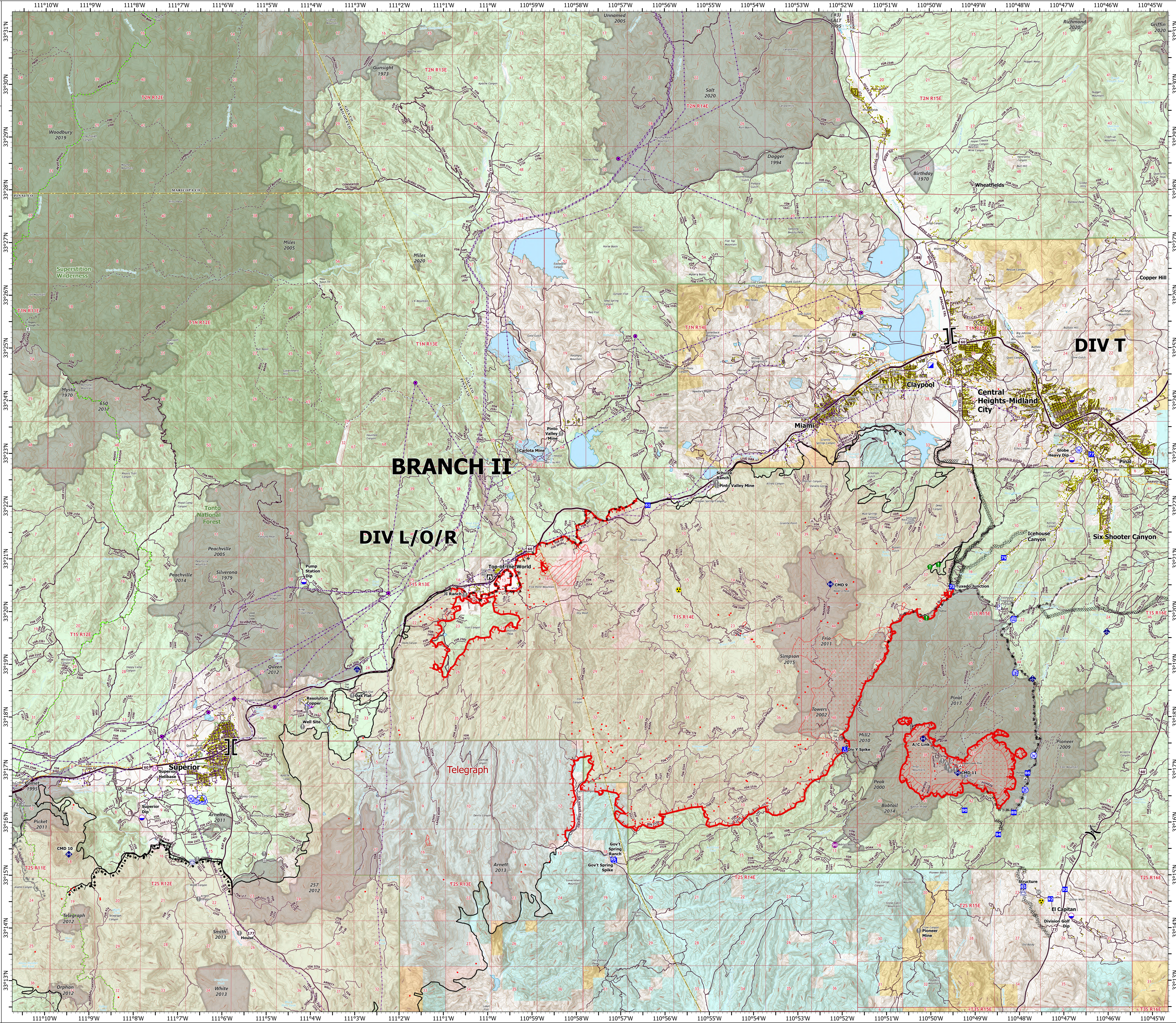
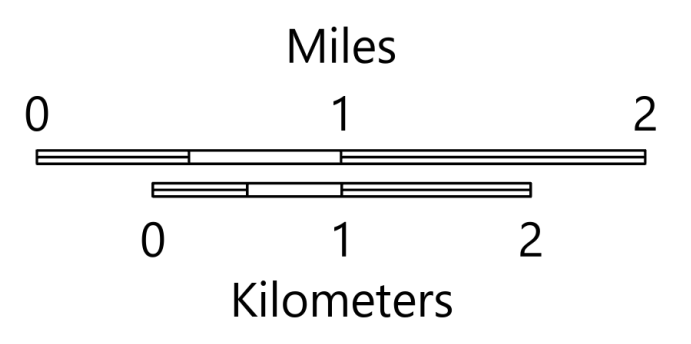
AZ-TNF-1255

6/13/2021

88,155 acres at 6/12/2021 2038



- Structure
- ⊙ Substations
- ⊙ Campground
- ⊙ District Office
- ⊙ Recreation Residence
- ⊙ Trailhead
- ⊙ Other
- Dip Site
- Helispot
- ⊙ Helibase
- ⊙ Division Break
- ⊙ Branch Break
- ⊙ Incident Command Post
- ⊙ Drop Point
- ⊙ Camp
- ⊙ Lookout
- ⊙ Value at Risk
- ⊙ Landmark
- ⊙ Gate
- ⊙ Bridge
- Resource Location
- Mobile Weather Unit
- Repeater
- Safety Zone
- Hazard
- Water Source
- Pump
- Water Tank
- IR Isolated Heat Source
- Completed Burnout
- ⊙ Completed Dozer Line
- ⊙ Completed Hand Line
- ⊙ Completed Mixed Construction Line
- ⊙ Completed Road as Line
- ⊙ Planned Burnout
- ⊙ Planned Dozer Line
- ⊙ Planned Mixed Construction Line
- ⊙ Planned Road as Line
- ⊙ Access or Improved Road
- ⊙ Fire Edge
- ⊙ Contained Line
- ⊙ IR Heat Perimeter
- ⊙ IR Intense Heat
- ⊙ IR Scattered Heat
- ⊙ Wildfire Daily Fire Perimeter
- ⊙ Highway or Major Connecting Road
- ⊙ Local Connecting Road
- ⊙ Local Road
- ⊙ Tonto National Forest Roads
- ⊙ Tonto National Forest Trails
- ⊙ Road
- ⊙ Arizona Trail
- ⊙ Transmission Lines
- ⊙ APS Distribution Overhead Infrastructure
- ⊙ Oil and Natural Gas Pipelines
- ⊙ Structure
- ⊙ USFS Boundary
- ⊙ County or Equivalent
- ⊙ Township/Range
- ⊙ Section
- ⊙ Fire History
- ⊙ USFS Wilderness Area
- ⊙ BLM
- ⊙ Indian Lands
- ⊙ Private
- ⊙ State
- ⊙ USFS



OPERATIONS

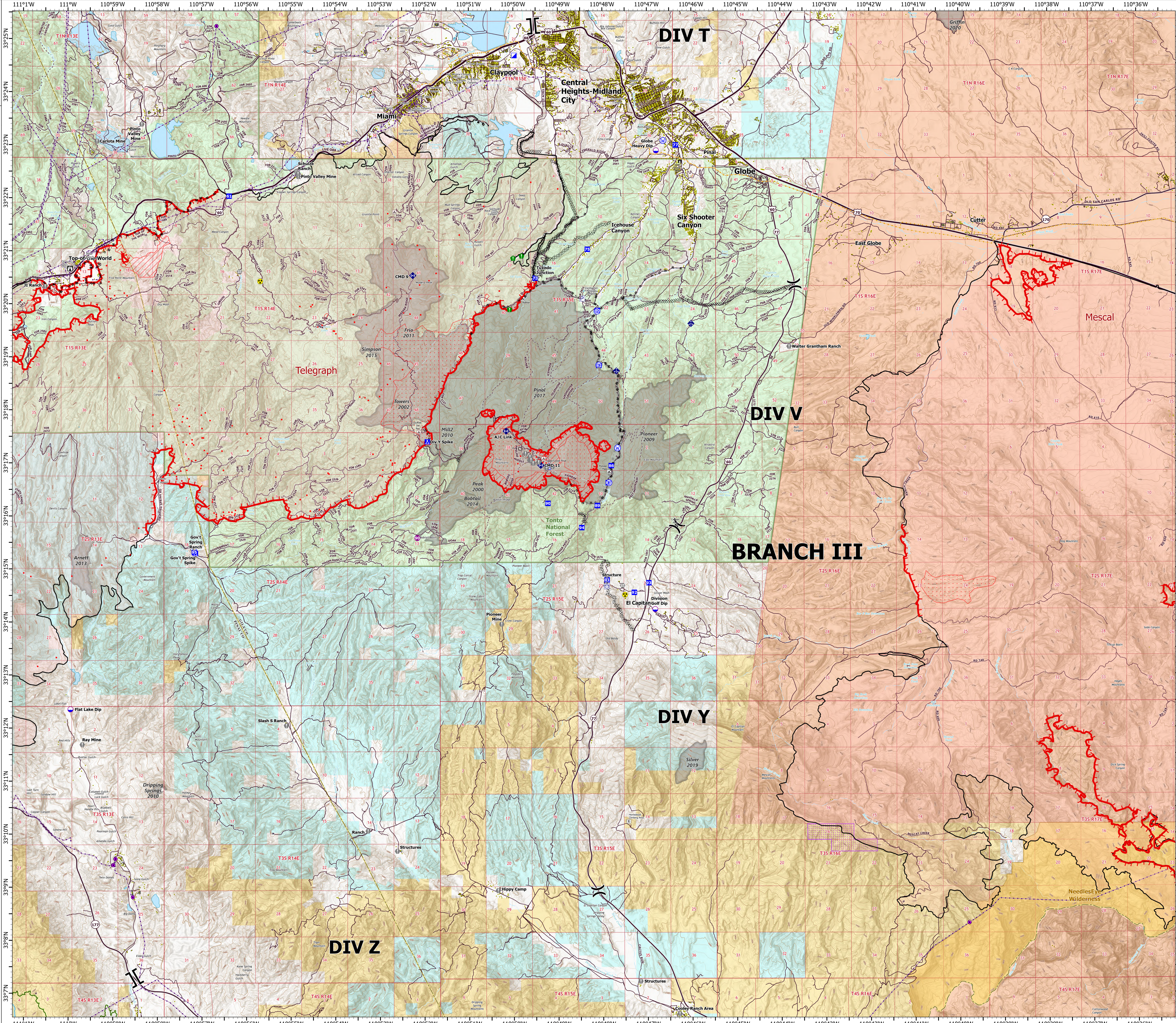
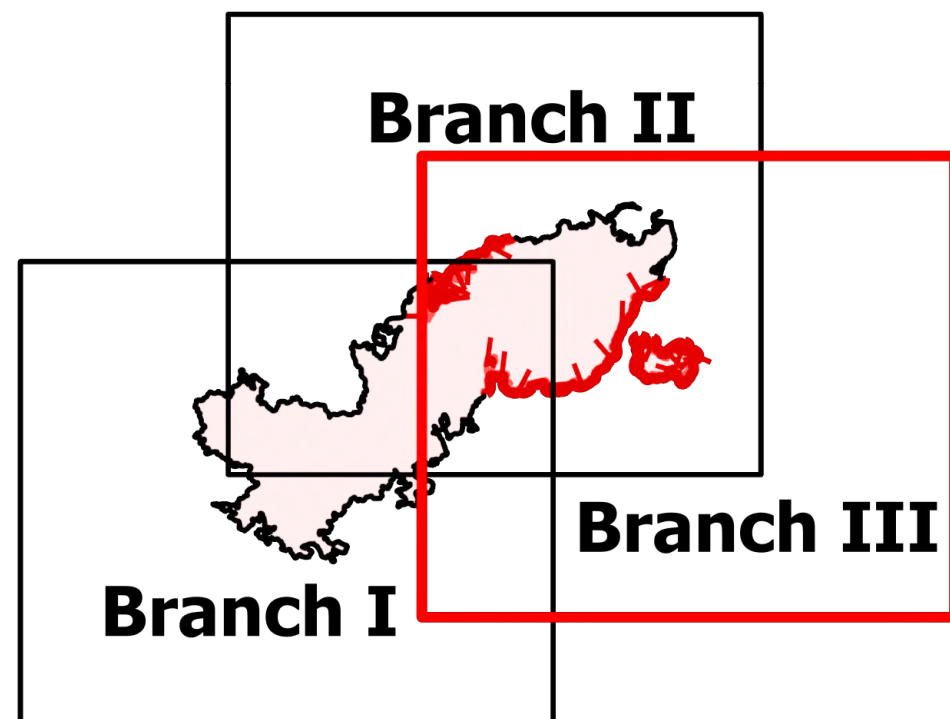
Branch III

Telegraph

AZ-TNF-1255

6/13/2021

88,155 acres at 6/12/2021 2038



- Structure
- Substations
- Ⓜ Campground
- Ⓜ District Office
- Ⓜ Recreation Residence
- Ⓜ Trailhead
- Ⓜ Other
- Ⓜ Trailhead
- Ⓜ Dig Site
- Ⓜ Helipad
- Ⓜ Division Break
- Ⓜ Branch Break
- Ⓜ Incident Command Post
- Ⓜ Drop Point
- Ⓜ Camp
- Ⓜ Lookout
- Ⓜ Value at Risk
- Ⓜ Landmark
- Ⓜ Gate
- Ⓜ Bridge
- Ⓜ Resource Location
- Ⓜ Mobile Weather Unit
- Ⓜ Repeater
- Ⓜ Hazard
- Ⓜ Water Source
- Ⓜ Pump
- Ⓜ Water Tank
- Ⓜ IR Isolated Heat Source
- Ⓜ Completed Dozer Line
- Ⓜ Completed Hand Line
- Ⓜ Completed Mixed Construction Line
- Ⓜ Completed Road as Line
- Ⓜ Planned Dozer Line
- Ⓜ Planned Mixed Construction Line
- Ⓜ Planned Road as Line
- Ⓜ Access or Improved Road
- Ⓜ Fire Edge
- Ⓜ Contained Line
- Ⓜ IR Heat Perimeter
- Ⓜ IR Intense Heat
- Ⓜ IR Scattered Heat
- Ⓜ Wildfire Daily Fire Perimeter
- Ⓜ Highway or Major Connecting Road
- Ⓜ Local Connecting Road
- Ⓜ Local Road
- Ⓜ Tonto National Forest Roads
- Ⓜ Tonto National Forest Trails
- Ⓜ Road
- Ⓜ Arizona Trail
- Ⓜ Transmission Lines
- Ⓜ APS Distribution Overhead Infrastructure
- Ⓜ Oil and Natural Gas Pipelines
- Ⓜ Structure
- Ⓜ BLM Boundary
- Ⓜ County or Equivalent
- Ⓜ BLM Area of Critical Environmental Concern
- Ⓜ Wilderness Area Boundary
- Ⓜ Federal Land within Wilderness Area
- Ⓜ Township/Range
- Ⓜ Section
- Ⓜ Fire History
- Ⓜ BLM
- Ⓜ Indian Lands
- Ⓜ Private
- Ⓜ State
- Ⓜ USFS

