

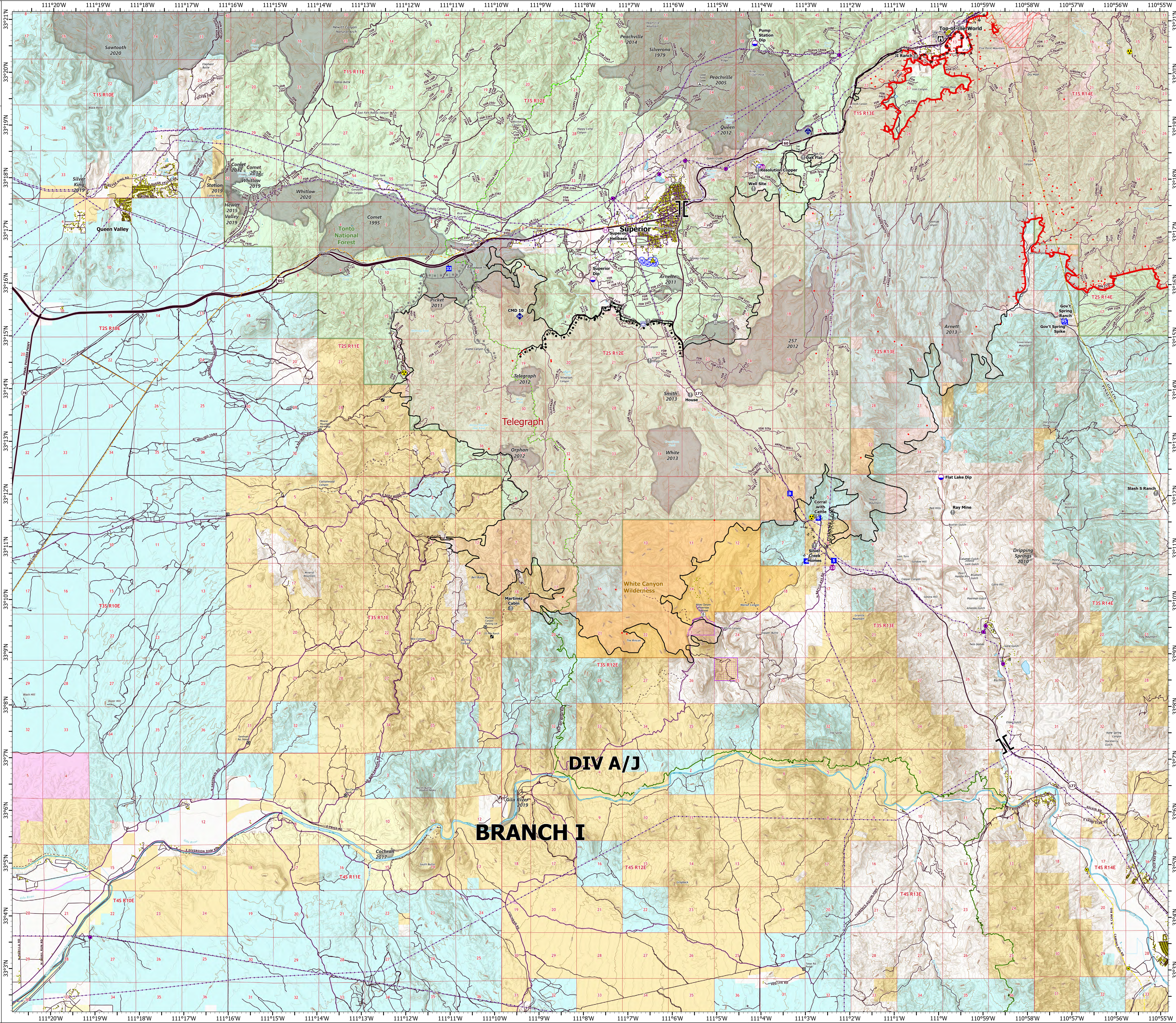
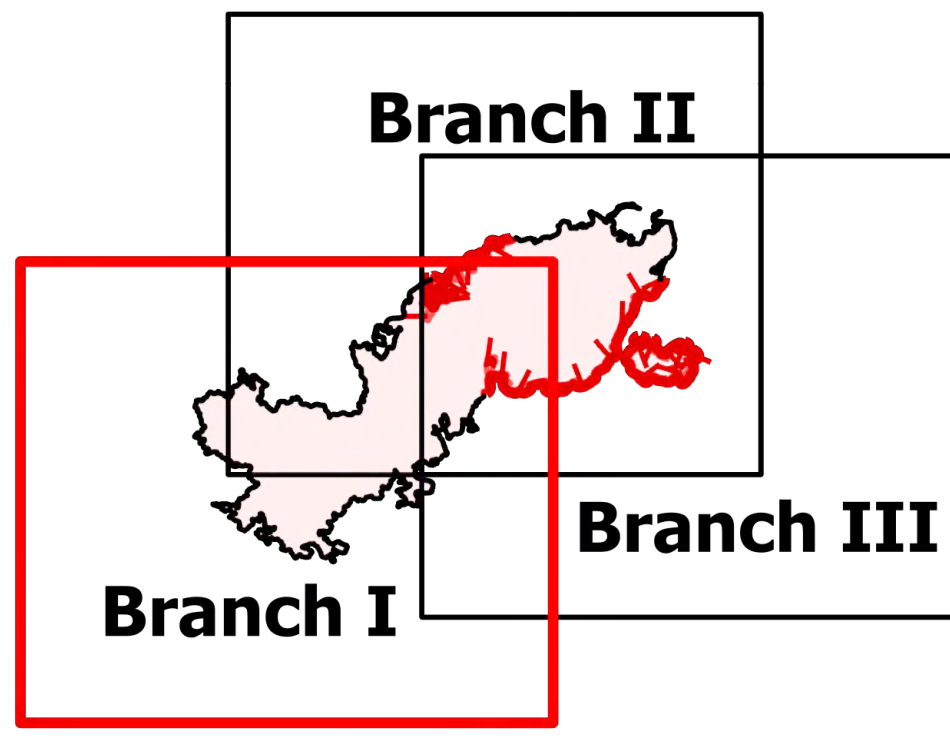
OPERATIONS

Branch I
Telegraph

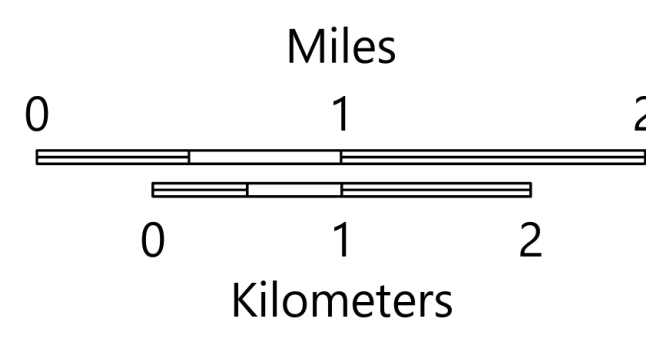
AZ-TNF-1255

6/13/2021

88,589 acres at 6/13/2021 1312

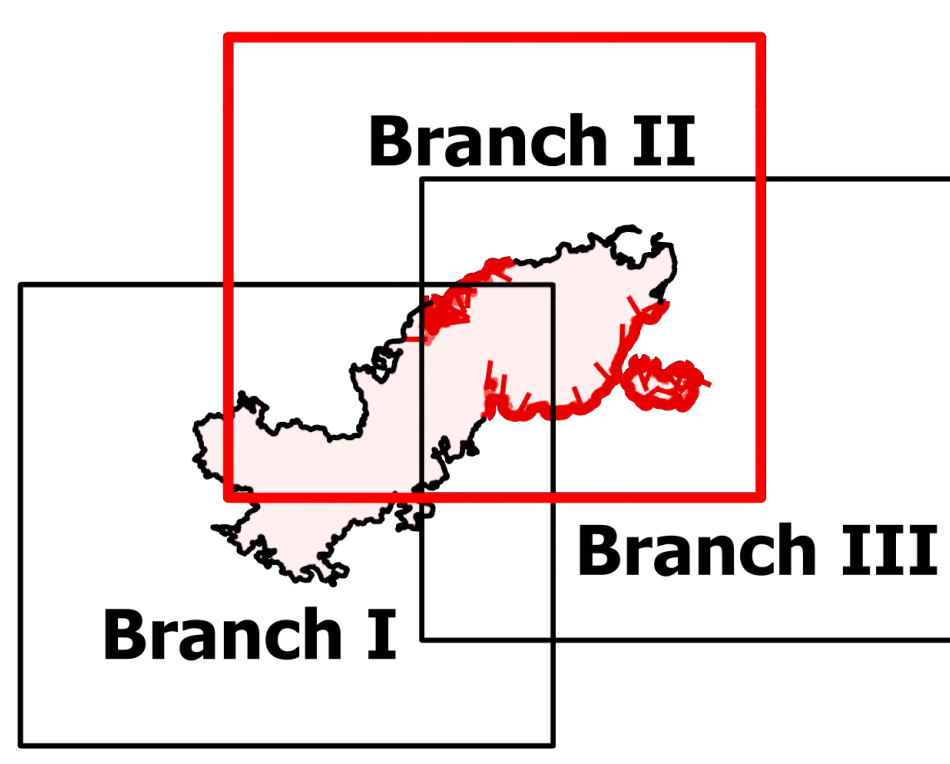


- Structure
- Substations
- Gas Facility
- Campground
- Trailhead
- BLM Planned Portal Sites
- Point of Interest
- Trailhead
- Dip Site
- Helipad
- Helibase
- Branch Break
- Drop Point
- Camp
- Lookout
- Value at Risk
- Gate
- Mobile Weather Unit
- Repeater
- Safety Zone
- Hazard
- Water Source
- Water Tank
- IR Isolated Heat Source
- Completed Burnout
- Completed Fuel Break
- Completed Hand Line
- Completed Mixed Construction Line
- Completed Road as Line
- Planned Burnout
- Planned Road as Line
- Access or Improved Road
- Fire Edge
- Contained Line
- IR Heat Perimeter
- IR Intense Heat
- Wildfire Daily Fire Perimeter
- Highway or Major Connecting Road
- Local Connecting Road
- Local Road
- Tonto National Forest Roads
- Tonto National Forest Trails
- Road
- Trail
- Arizona Trail
- Middle Gila Access Route
- Transmission Lines
- APS Distribution Overhead Infrastructure
- Gas Line
- Oil and Natural Gas Pipelines
- Structure
- USFS Boundary
- County or Equivalent
- BLM Area of Critical Environmental Concern
- Wilderness Area Boundary
- Federal Land within Wilderness Area
- Township/Range
- Section
- Fire History
- BLM
- BR
- County
- Military
- Private
- State
- USFS

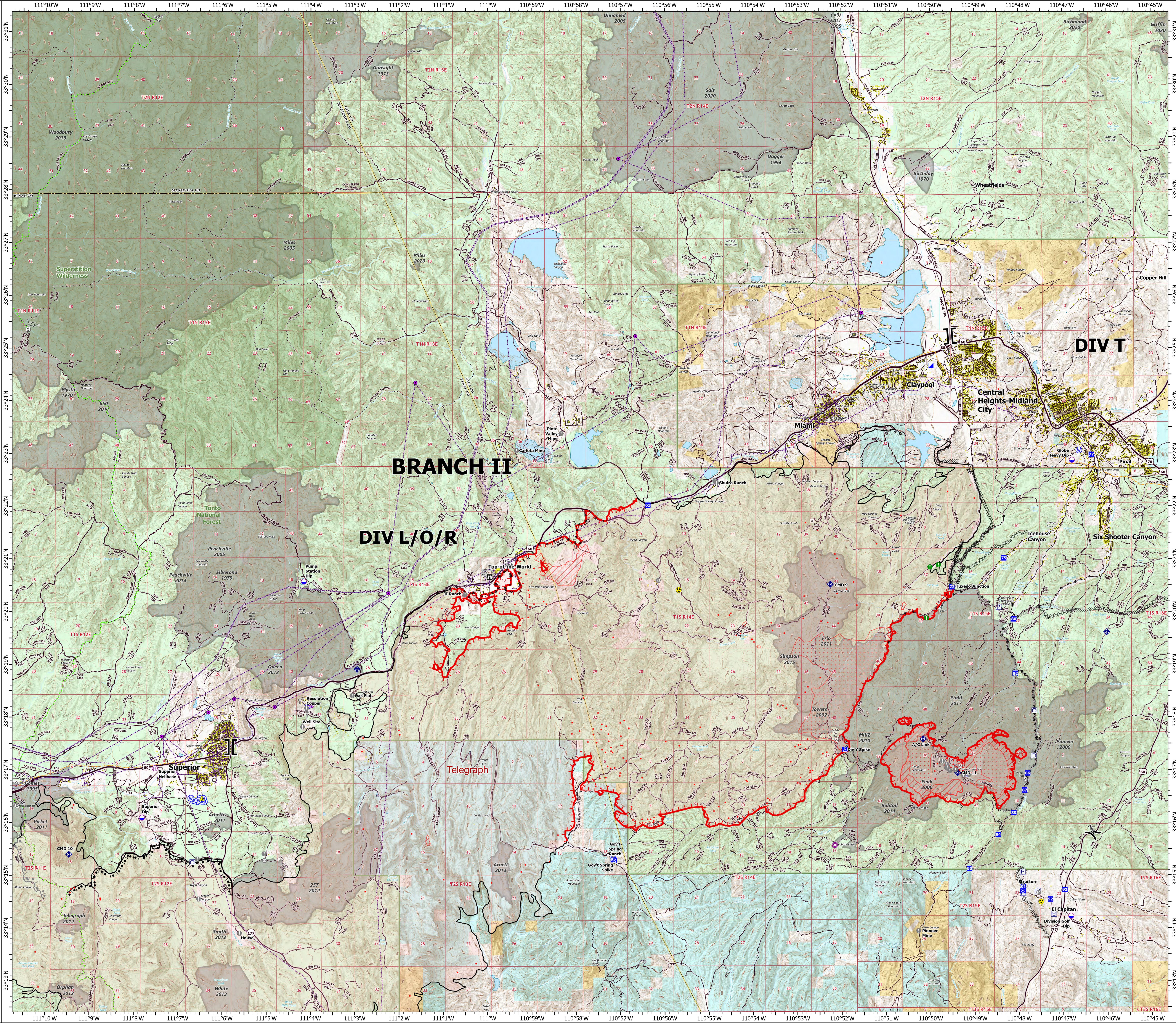
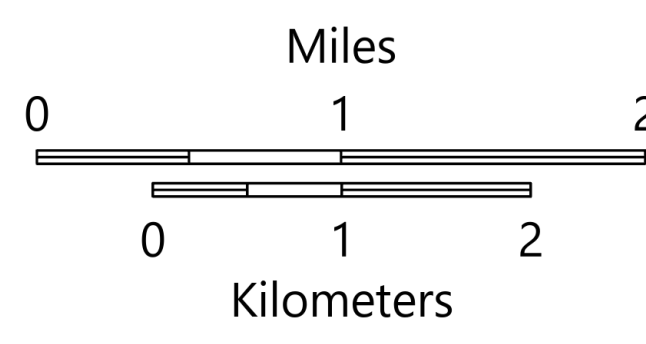


OPERATIONS

Branch II
Telegraph
AZ-TNF-1255
6/13/2021
88,589 acres at 6/13/2021 1312



- Structure
- Substation
- ⊠ Campground
- ⊠ District Office
- ⊠ Recreation Residence
- ⊠ Trailhead
- ⊠ Other
- Dip Site
- Helipoint
- ⊠ Helibase
- ⊠ Division Break
- ⊠ Branch Break
- ⊠ Incident Command Post
- ⊠ Drop Point
- ⊠ Camp
- ⊠ Staging Area
- ⊠ Lookout
- ⊠ Value at Risk
- Landmark
- Gate
- Resource Location
- Mobile Weather Unit
- Riposter
- Safety Zone
- Hazard
- Water Source
- Pump
- Water Tank
- IR Isolated Heat Source
- ⊠ Completed Burnout
- ⊠ Completed Dozer Line
- ⊠ Completed Hand Line
- ⊠ Completed Mixed Construction Line
- ⊠ Planned Road as Line
- ⊠ Planned Burnout
- ⊠ Planned Dozer Line
- ⊠ Planned Mixed Construction Line
- ⊠ Planned Road as Line
- ⊠ Access or Improved Road
- ⊠ Fire Edge
- ⊠ Contained Line
- ⊠ IR Heat Perimeter
- ⊠ IR Intense Heat
- ⊠ IR Scattered Heat
- ⊠ Wildfire Daily Fire Perimeter
- ⊠ Highway or Major Connecting Road
- ⊠ Local Connecting Road
- ⊠ Local Road
- ⊠ Tonto National Forest Roads
- ⊠ Tonto National Forest Trails
- ⊠ Road
- ⊠ Arizona Trail
- ⊠ Transmission Lines
- ⊠ APS Distribution Overhead Infrastructure
- ⊠ Oil and Natural Gas Pipelines
- ⊠ Structure
- ⊠ USFS Boundary
- ⊠ County or Equivalent
- ⊠ Township/Range
- ⊠ Section
- ⊠ Fire History
- ⊠ USFS Wilderness Area
- ⊠ BLM
- ⊠ Indian Lands
- ⊠ Private
- ⊠ State
- ⊠ USFS



OPERATIONS

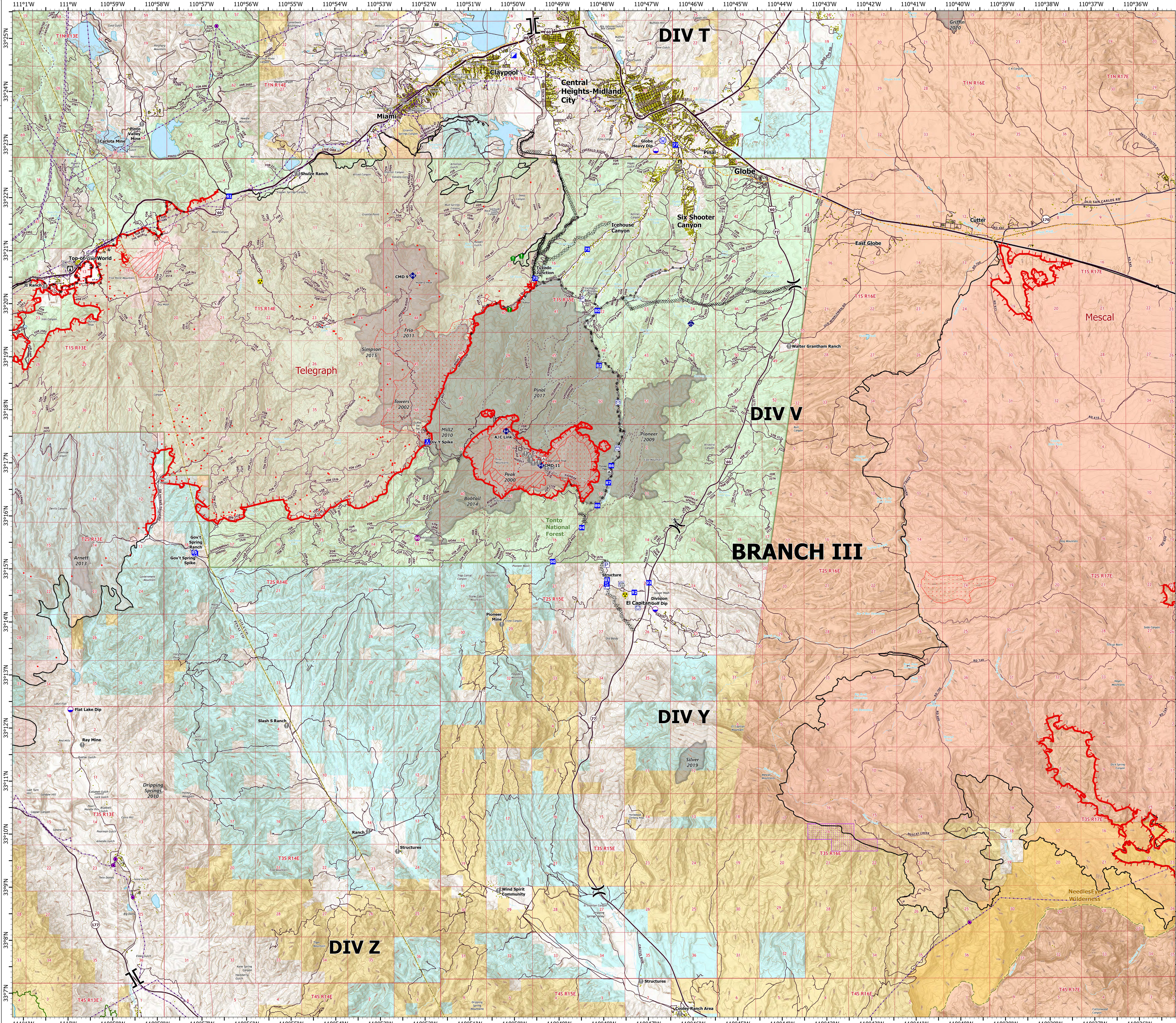
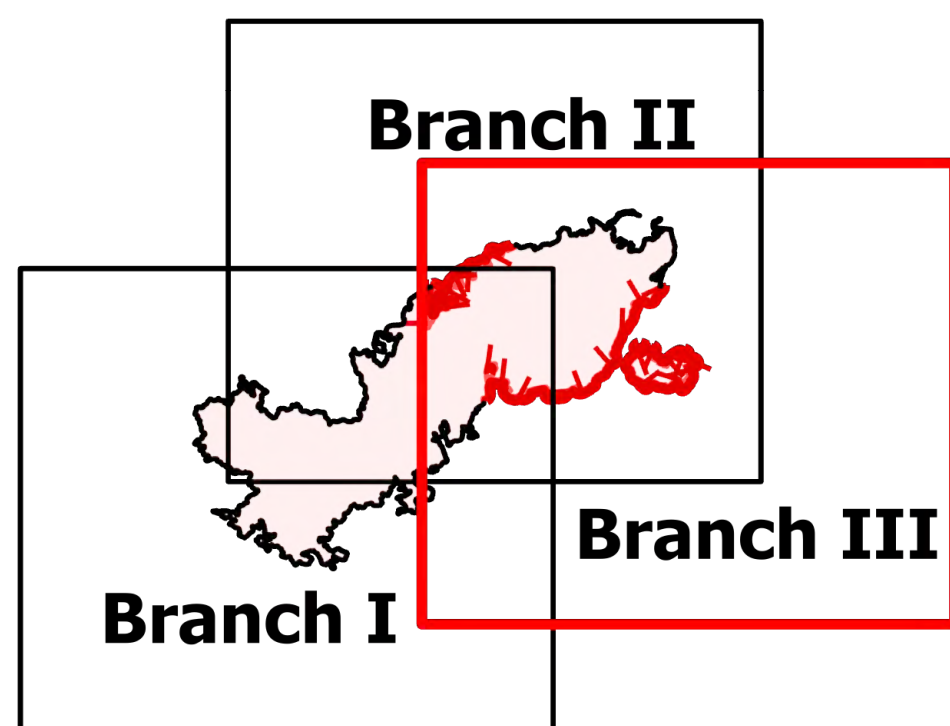
Branch III

Telegraph

AZ-TNF-1255

6/13/2021

88,589 acres at 6/13/2021 1312



- Structure
- Substations
- Campground
- District Office
- Recreation Residence
- Trailhead
- Other
- Trailhead
- Dip Site
- Heliport
- × Division Break
- Branch Break
- Incident Command Post
- Drop Point
- Camp
- Staging Area
- Lookout
- Value at Risk
- Landmark
- Gate
- Bridge
- Resource Location
- Mobile Weather Unit
- Repeater
- Hazard
- Water Source
- Pump
- Water Tank
- IR Isolated Heat Source
- Completed Dozer Line
- Completed Hand Line
- Completed Mixed Construction Line
- Planned Road as Line
- Planned Dozer Line
- Planned Mixed Construction Line
- Planned Road as Line
- Access or Improved Road
- Fire Edge
- Contained Line
- IR Heat Perimeter
- IR Intense Heat
- IR Scattered Heat
- Wildfire Daily Fire Perimeter
- Highway or Major Connecting Road
- Local Connecting Road
- Local Road
- Tonto National Forest Roads
- Tonto National Forest Trails
- Road
- Arizona Trail
- Transmission Lines
- APS Distribution Overhead Infrastructure
- Oil and Natural Gas Pipelines
- Structure
- USFS Boundary
- County or Equivalent
- BLM Area of Critical Environmental Concern
- Wilderness Area Boundary
- Federal Land within Wilderness Area
- Township/Range
- Section
- Fire History
- BLM
- Indian Lands
- Private
- State
- USFS

