

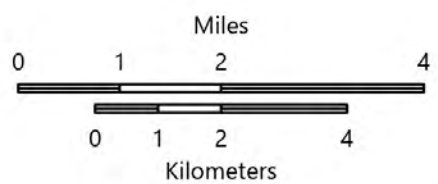
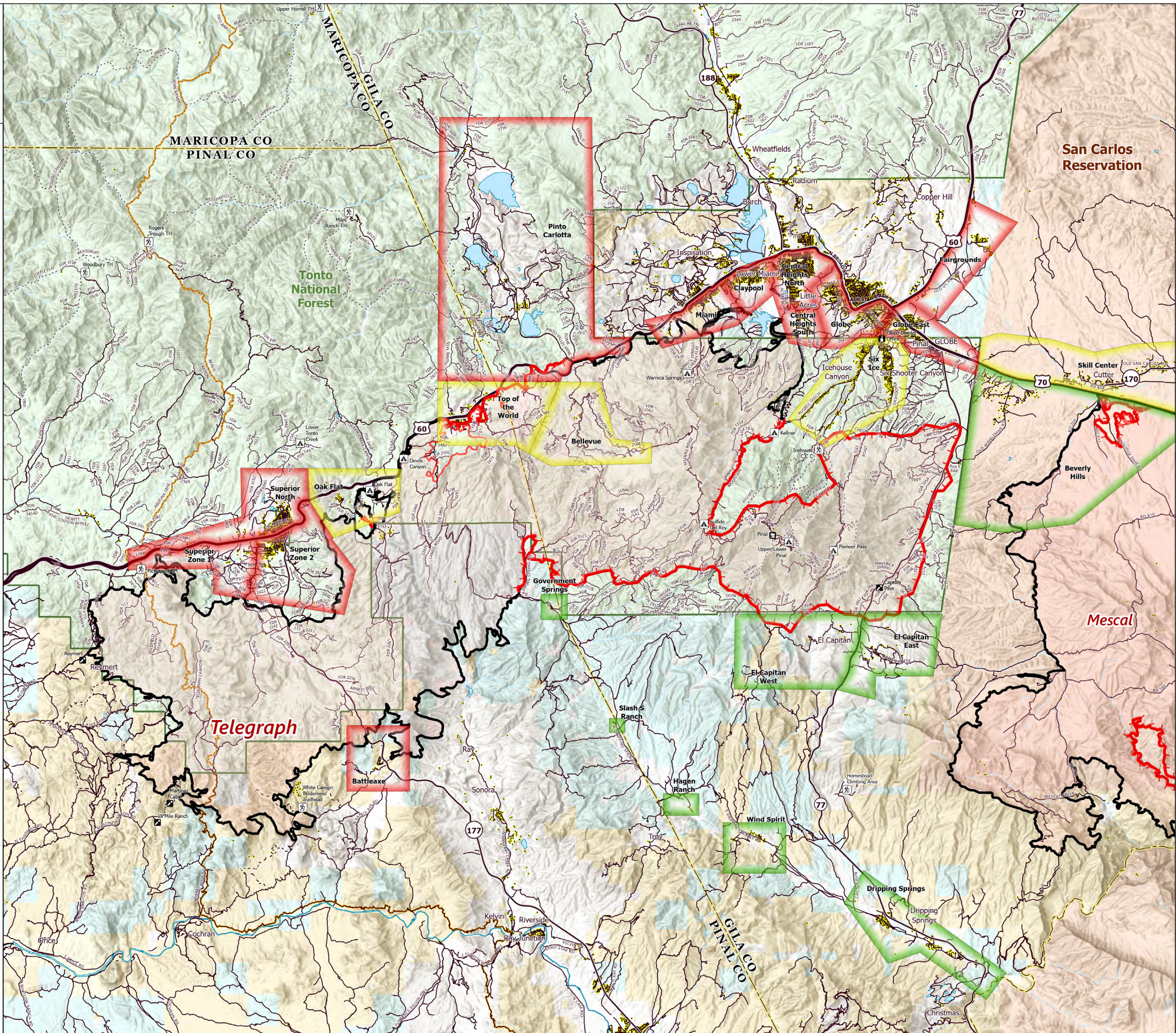
# EVACUATIONS

Telegraph  
AZ-TNF-1255  
6/14/2021

106,080 acres at 6/14/2021 10:00am

## Evacuation Status (Ready, Set, Go)

- Go
- Set
- Ready
- Campground
- District Office
- Recreation Residence
- Trailhead
- Other
- Fire Edge
- Contained Line
- Wildfire Daily Fire Perimeter
- Highway or Major Connecting Road
- Local Connecting Road
- Local Road
- Trail
- Arizona Trail
- Structure
- USFS Boundary
- County
- Bureau of Land Management
- Bureau of Reclamation
- Indian Lands
- Private
- State
- US Forest Service



1:120,000 - SWAIMT2 - 6/14/2021 1553  
Acres from GIS  
North American 1983 Datum, LatLong Grid