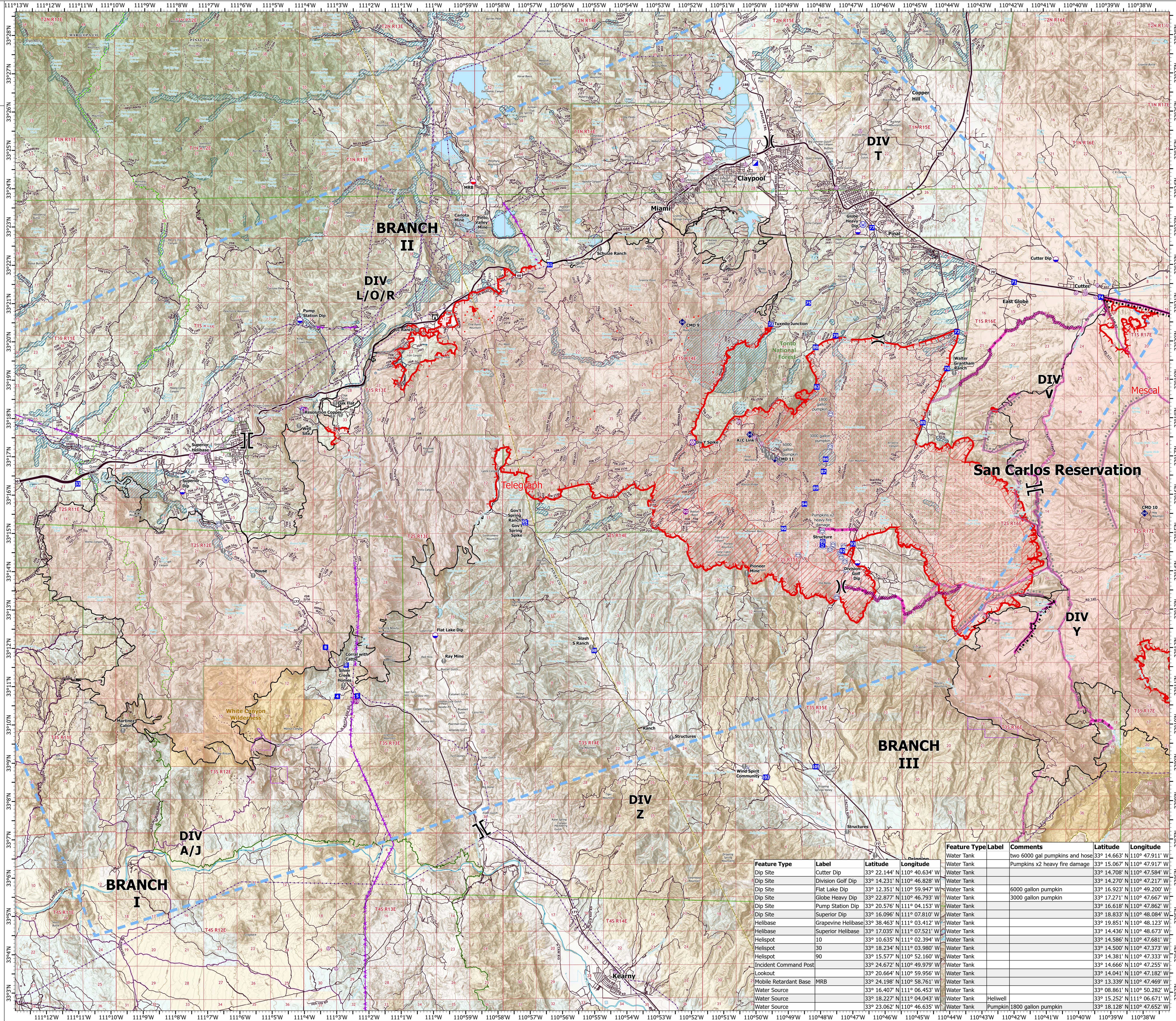
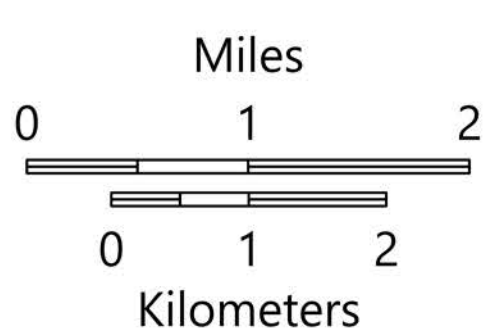


AIROPS

Telegraph
AZ-TNF-1255
6/15/2021

123,078 acres at 6/14/2021 2116 hrs

- Aerial Hazard
- Dip Site
- Mobile Retardant Base
- Helispot
- Helibase
- Division Break
- Branch Break
- Incident Command Post
- Drop Point
- Camp
- Staging Area
- Lookout
- Value at Risk
- Landmark
- Repeater
- Water Source
- Water Tank
- IR Isolated Heat Source
- Aerial Hazard
- Temporary Flight Restriction
- Fire Edge
- Contained Line
- Transmission Lines
- Mescal Fire Operational Lines**
- Completed Burnout
- Completed Dozer Line
- Completed Hand Line
- Completed Mixed Construction Line
- Planned Burnout
- Planned Dozer Line
- Planned Mixed Construction Line
- Planned Road as Line
- Fire Edge
- Contained Line
- Wildfire Daily Fire Perimeter
- Area Covered by IR Flight
- IR Heat Perimeter
- IR Intense Heat
- IR Scattered Heat
- Highway or Major Connecting Road
- Local Connecting Road
- Local Road
- Road
- Trail
- Arizona Trail
- Middle Gila Access Route
- County or Equivalent
- Township/Range
- Section
- BLM
- BR
- Indian Lands
- Private
- State
- USFS
- USFS Wilderness Area
- Wilderness Area Boundary
- Federal Land within Wilderness Area
- BLM Area of Critical Environmental Concern
- USFS Boundary
- Retardant Avoidance



Feature Type	Label	Latitude	Longitude	Comments	Latitude	Longitude
Water Tank		33° 14.663' N	110° 47.911' W	two 6000 gal pumpkins and hose	33° 14.663' N	110° 47.911' W
Water Tank		33° 15.067' N	110° 47.917' W	Pumpkins x2 heavy fire damage	33° 15.067' N	110° 47.917' W
Dip Site	Cutter Dip	33° 22.144' N	110° 40.634' W		33° 22.144' N	110° 40.634' W
Dip Site	Division Golf Dip	33° 14.231' N	110° 46.828' W		33° 14.231' N	110° 46.828' W
Dip Site	Flat Lake Dip	33° 12.351' N	110° 59.947' W		33° 12.351' N	110° 59.947' W
Dip Site	Globe Heavy Dip	33° 22.877' N	110° 46.793' W		33° 22.877' N	110° 46.793' W
Dip Site	Pump Station Dip	33° 20.576' N	111° 04.153' W	6000 gallon pumpkin	33° 20.576' N	111° 04.153' W
Dip Site	Superior Dip	33° 16.096' N	111° 07.810' W	3000 gallon pumpkin	33° 16.096' N	111° 07.810' W
Helibase	Grapevine Helibase	33° 38.463' N	111° 03.412' W		33° 38.463' N	111° 03.412' W
Helibase	Superior Helibase	33° 17.035' N	111° 07.521' W		33° 17.035' N	111° 07.521' W
Helispot	10	33° 10.635' N	111° 02.394' W		33° 10.635' N	111° 02.394' W
Helispot	30	33° 18.234' N	111° 03.980' W		33° 18.234' N	111° 03.980' W
Helispot	90	33° 15.577' N	110° 52.160' W		33° 15.577' N	110° 52.160' W
Incident Command Post		33° 24.672' N	110° 49.979' W		33° 24.672' N	110° 49.979' W
Lookout		33° 20.664' N	110° 59.956' W		33° 20.664' N	110° 59.956' W
Mobile Retardant Base	MRB	33° 24.198' N	110° 58.761' W		33° 24.198' N	110° 58.761' W
Water Source		33° 16.407' N	111° 06.453' W		33° 16.407' N	111° 06.453' W
Water Source		33° 18.227' N	111° 04.043' W		33° 18.227' N	111° 04.043' W
Water Source		33° 23.062' N	110° 46.635' W		33° 23.062' N	110° 46.635' W
Water Tank		33° 14.663' N	110° 47.911' W		33° 14.663' N	110° 47.911' W
Water Tank		33° 15.067' N	110° 47.917' W		33° 15.067' N	110° 47.917' W
Water Tank		33° 14.708' N	110° 47.584' W		33° 14.708' N	110° 47.584' W
Water Tank		33° 14.270' N	110° 47.217' W		33° 14.270' N	110° 47.217' W
Water Tank		33° 16.923' N	110° 49.200' W		33° 16.923' N	110° 49.200' W
Water Tank		33° 17.271' N	110° 47.667' W		33° 17.271' N	110° 47.667' W
Water Tank		33° 16.618' N	110° 47.862' W		33° 16.618' N	110° 47.862' W
Water Tank		33° 18.833' N	110° 48.084' W		33° 18.833' N	110° 48.084' W
Water Tank		33° 19.851' N	110° 48.123' W		33° 19.851' N	110° 48.123' W
Water Tank		33° 14.436' N	110° 48.673' W		33° 14.436' N	110° 48.673' W
Water Tank		33° 14.586' N	110° 47.681' W		33° 14.586' N	110° 47.681' W
Water Tank		33° 14.500' N	110° 47.373' W		33° 14.500' N	110° 47.373' W
Water Tank		33° 14.381' N	110° 47.333' W		33° 14.381' N	110° 47.333' W
Water Tank		33° 14.666' N	110° 47.255' W		33° 14.666' N	110° 47.255' W
Water Tank		33° 14.041' N	110° 47.182' W		33° 14.041' N	110° 47.182' W
Water Tank		33° 13.339' N	110° 47.469' W		33° 13.339' N	110° 47.469' W
Water Tank		33° 08.861' N	110° 50.282' W		33° 08.861' N	110° 50.282' W
Water Tank		33° 15.252' N	111° 06.671' W		33° 15.252' N	111° 06.671' W
Water Tank		33° 18.128' N	110° 47.652' W		33° 18.128' N	110° 47.652' W