

OPERATIONS

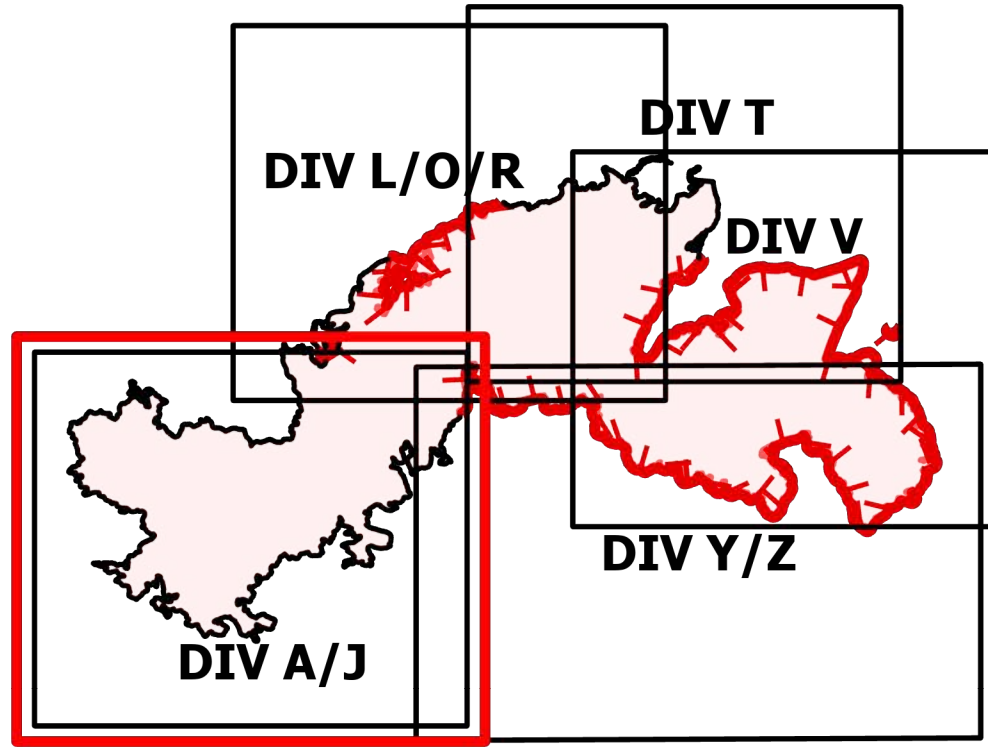
DIV A/J

Telegraph

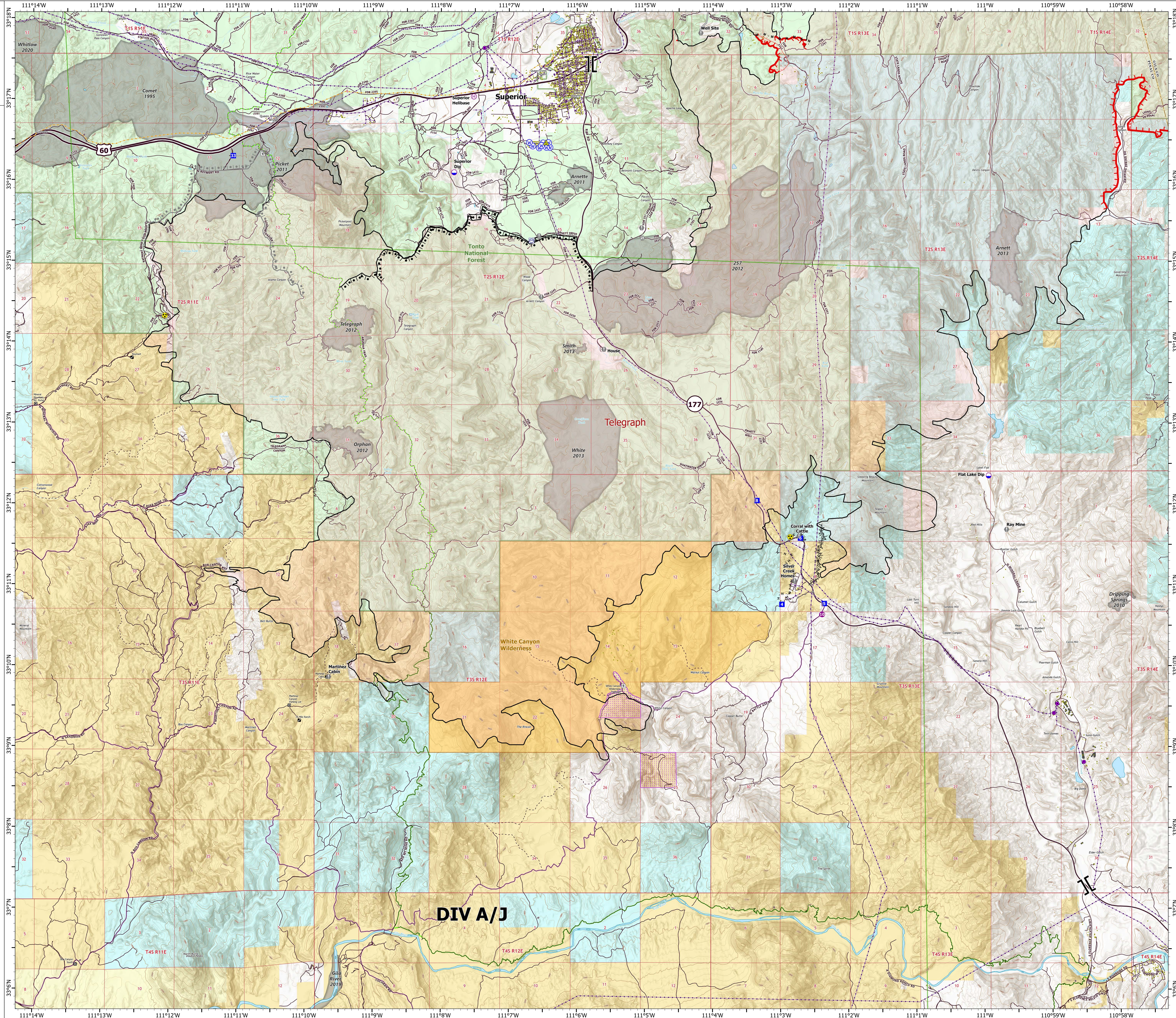
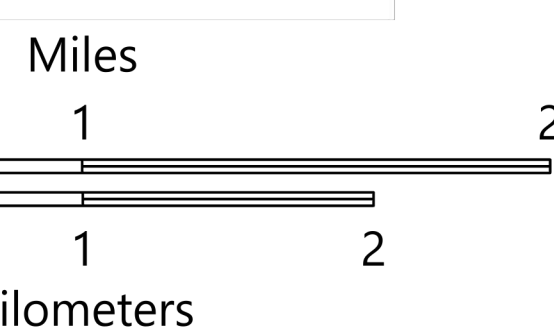
AZ-TNF-1255

6/15/2021

123,078 acres at 6/14/2021 2116 hrs



- Structure
- Substations
- ⊠ Trailhead
- ⊠ BLM Planned Portal Sites
- ⊠ Point of Interest
- ⊠ Trailhead
- Dip Site
- Helispot
- Helibase
- ⊠ Branch Break
- ⊠ Drop Point
- ⊠ Value at Risk
- ⊠ Gate
- ⚠ Safety Zone
- ⚠ Hazard
- ⊠ Water Source
- ⊠ Water Tank
- ⊠ IR Isolated Heat Source
- ⊠ Completed Burnout
- ⊠ Completed Fuel Break
- ⊠ Completed Hand Line
- ⊠ Completed Mixed Construction Line
- ⊠ Planned Burnout
- ⊠ Planned Road as Line
- ⊠ Planned Secondary Line
- ⊠ Access or Improved Road
- ⊠ Fire Edge
- ⊠ Contained Line
- ⊠ Area Covered by IR Flight
- ⊠ IR Heat Perimeter
- ⊠ IR Scattered Heat
- ⊠ Wildfire Daily Fire Perimeter
- ⊠ Highway or Major Connecting Road
- ⊠ Local Connecting Road
- ⊠ Local Road
- ⊠ Tonto National Forest Roads
- ⊠ Tonto National Forest Trails
- ⊠ Road
- ⊠ Trail
- ⊠ Arizona Trail
- ⊠ Middle Gila Access Route
- ⊠ Transmission Lines
- ⊠ Oil and Natural Gas Pipelines
- ⊠ APS Distribution Overhead Infrastructure
- ⊠ Structure
- ⊠ USFS Boundary
- ⊠ County or Equivalent
- ⊠ BLM Area of Critical Environmental Concern
- ⊠ Wilderness Area Boundary
- ⊠ Federal Land within Wilderness Area
- ⊠ Township/Range
- ⊠ Section
- ⊠ Fire History
- ⊠ BLM
- ⊠ BR
- ⊠ Private
- ⊠ State
- ⊠ USFS



OPERATIONS

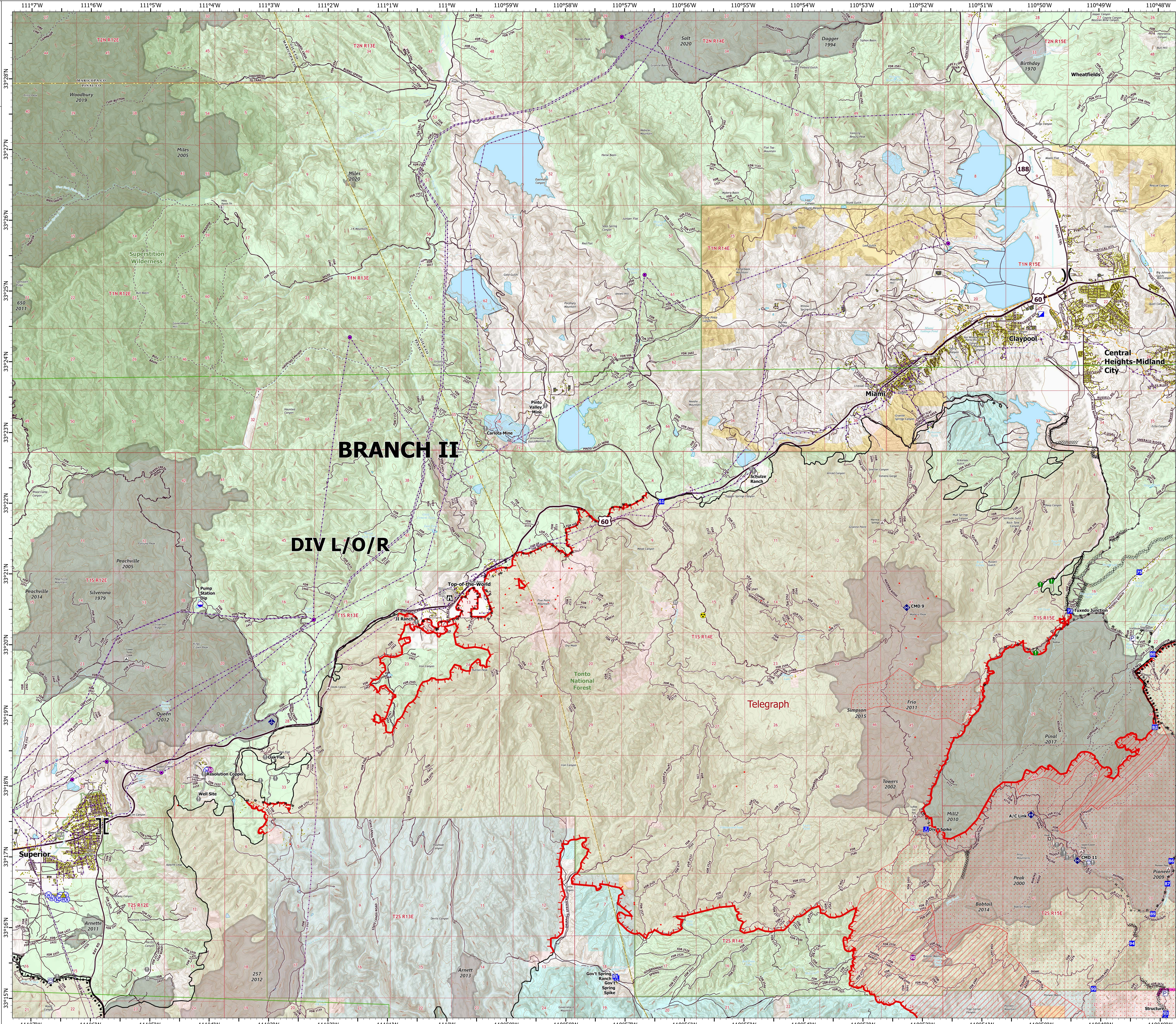
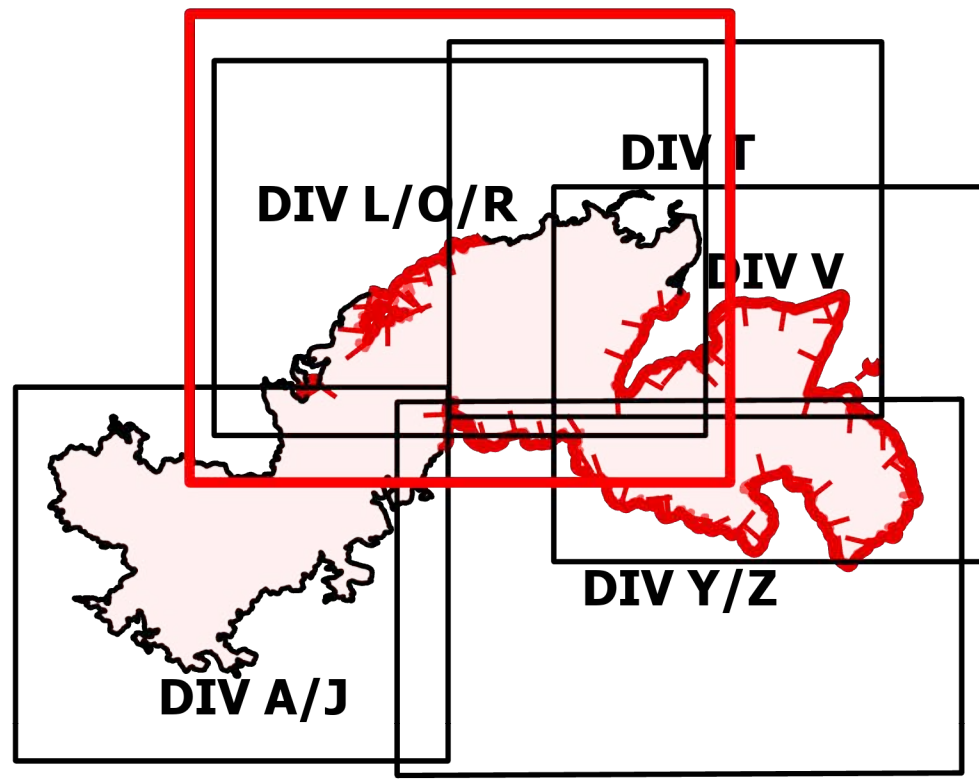
DIV L/O/R

Telegraph

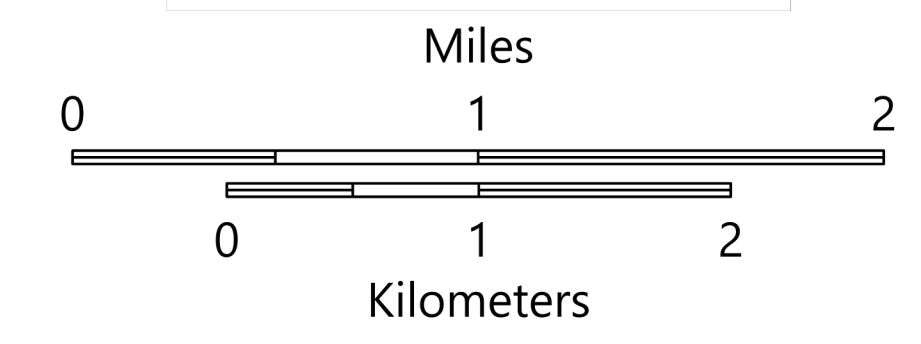
AZ-TNF-1255

6/15/2021

123,078 acres at 6/14/2021 2116 hrs



- Structure
- Substations
- Campground
- Recreation Residence
- Trailhead
- Dip Site
- Heliport
- Division Break
- Branch Break
- Incident Command Post
- Drop Point
- Camp
- Staging Area
- Lookout
- Value at Risk
- Landmark
- Gate
- Bridge
- Resource Location
- Mobile Weather Unit
- Repeater
- Safety Zone
- Hazard
- Water Source
- Pump
- Water Tank
- IR Isolated Heat Source
- Completed Burnout
- Completed Dozer Line
- Completed Hand Line
- Completed Mixed Construction Line
- Completed Road as Line
- Planned Dozer Line
- Planned Road as Line
- Planned Secondary Line
- Access or Improved Road
- Fire Edge
- Contained Line
- Mescal Fire Operational Lines
- Completed Dozer Line
- Completed Road as Line
- Area Covered by IR Flight
- IR Heat Perimeter
- IR Intense Heat
- IR Scattered Heat
- Wildfire Daily Fire Perimeter
- Highway or Major Connecting Road
- Local Connecting Road
- Local Road
- Tonto National Forest Roads
- Tonto National Forest Trails
- Road
- Transmission Lines
- Oil and Natural Gas Pipelines
- APS Distribution Overhead Infrastructure
- Structure
- USFS Boundary
- County or Equivalent
- Township/Range
- Section
- Fire History
- USFS Wilderness Area
- BLM
- Private
- State
- USFS

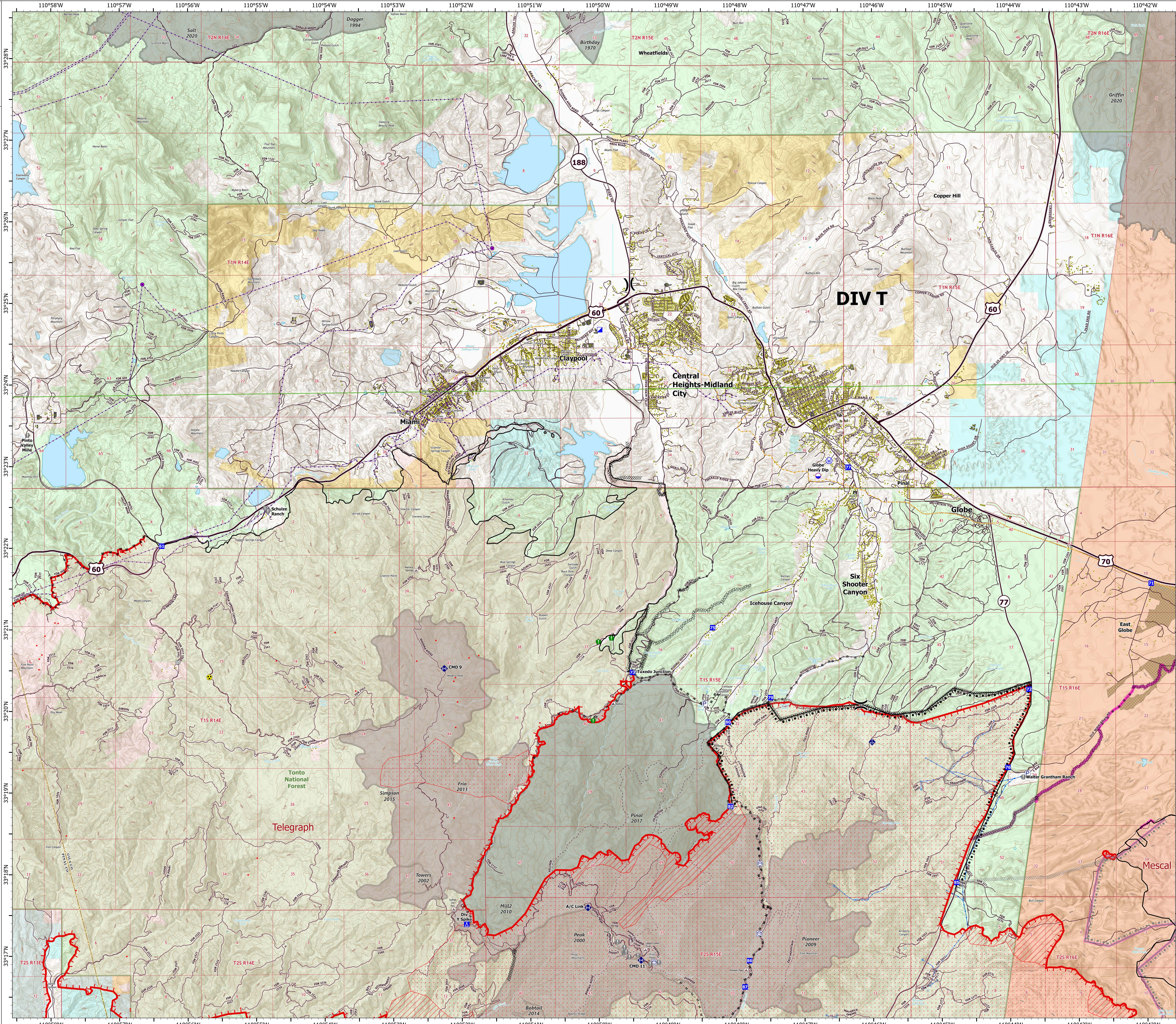
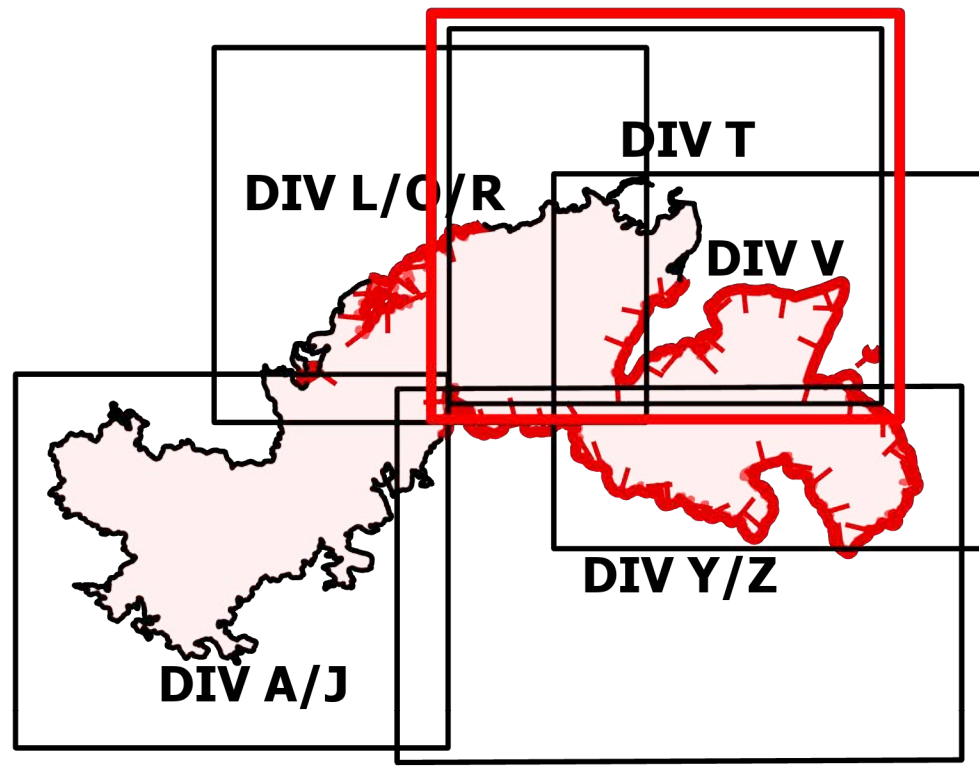


OPERATIONS

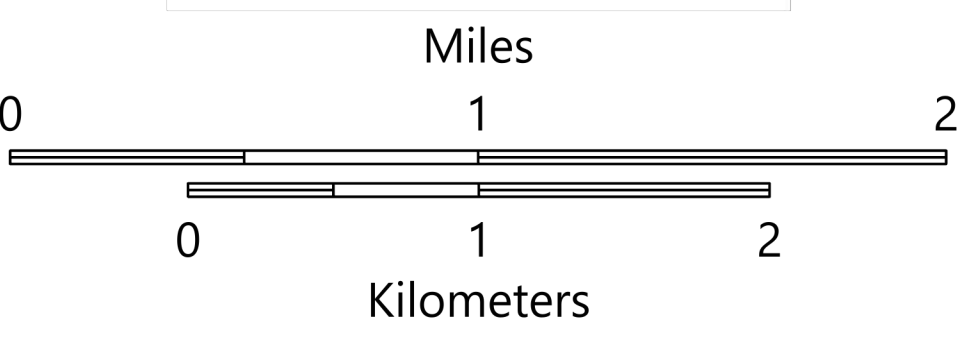
DIV T

Telegraph
AZ-TNF-1255
6/15/2021

123,078 acres at 6/14/2021 2116 hrs



- Structure
- Substations
- Campground
- District Office
- Recreation Residence
- Trailhead
- Dip Site
- Division Break
- Incident Command Post
- Drop Point
- Camp
- Value at Risk
- Landmark
- Gate
- Bridge
- Resource Location
- Mobile Weather Unit
- Repeater
- Hazard
- Water Source
- Range VAR Point
- Pump
- Water Tank
- IR Isolated Heat Source
- Completed Burnout
- Completed Dozer Line
- Completed Hand Line
- Completed Mixed Construction Line
- Completed Road as Line
- Planned Dozer Line
- Planned Road as Line
- Fire Edge
- Contained Line
- Mescal Fire Operational Lines
- Completed Dozer Line
- Completed Hand Line
- Completed Road as Line
- Planned Burnout
- Planned Dozer Line
- Area Covered by IR Flight
- IR Heat Perimeter
- IR Intense Heat
- IR Scattered Heat
- Wildfire Daily Fire Perimeter
- Highway or Major Connecting Road
- Local Connecting Road
- Local Road
- Tonto National Forest Roads
- Tonto National Forest Trails
- Road
- Transmission Lines
- Oil and Natural Gas Pipelines
- Range VAR Line
- APS Distribution Overhead Infrastructure
- Structure
- USFS Boundary
- San Carlos Fuel Treatments
- County or Equivalent
- Township/Range
- Section
- Fire History
- BLM
- Indian Lands
- Private
- State
- USFS

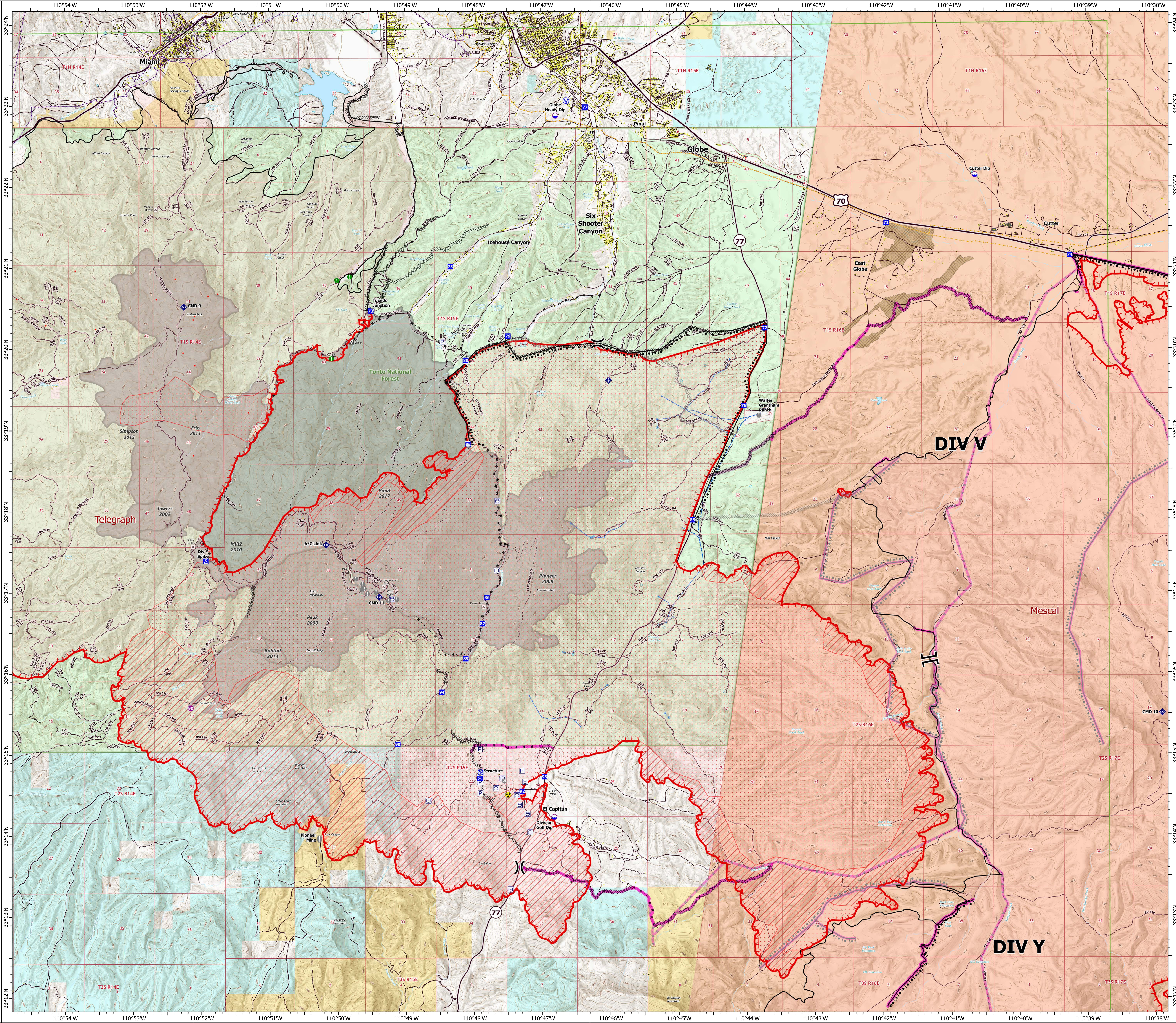
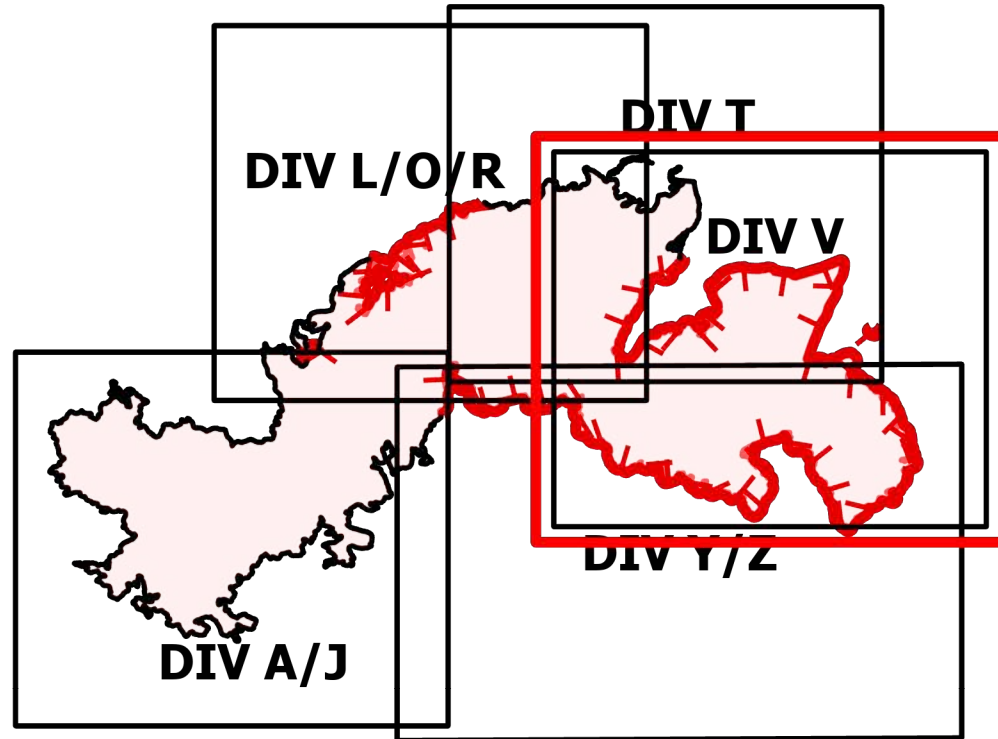


OPERATIONS

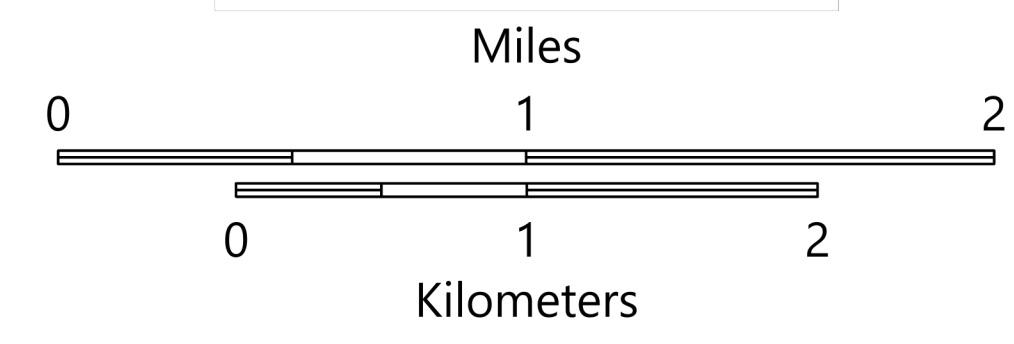
DIV V

Telegraph
AZ-TNF-1255
6/15/2021

123,078 acres at 6/14/2021 2116 hrs



- Structure
- ▲ Campground
- District Office
- Recreation Residence
- ⊗ Trailhead
- Other
- Dip Site
- Helispot
- ⌋ Division Break
- ⌋ Branch Break
- Drop Point
- ▲ Camp
- Staging Area
- Value at Risk
- Landmark
- Gate
- Bridge
- Resource Location
- ◆ Mobile Weather Unit
- ◆ Repeater
- ⚠ Hazard
- Water Source
- Range VAR Point
- Pump
- Water Tank
- IR Isolated Heat Source
- Completed Burnout
- Completed Dozer Line
- Completed Hand Line
- Completed Road as Line
- Completed Mixed Construction Line
- Planned Dozer Line
- Planned Hand Line
- Planned Road as Line
- Planned Burnout
- Planned Dozer Line
- Planned Mixed Construction Line
- Planned Road as Line
- Area Covered by IR Flight
- IR Heat Perimeter
- IR Intense Heat
- IR Scattered Heat
- Wildfire Daily Fire Perimeter
- Highway or Major Connecting Road
- Local Connecting Road
- Local Road
- Tonto National Forest Roads
- Tonto National Forest Trails
- Road
- Transmission Lines
- Oil and Natural Gas Pipelines
- Range VAR Line
- APS Distribution Overhead Infrastructure
- Structure
- USFS Boundary
- San Carlos Fuel Treatments
- County or Equivalent
- Township/Range
- Section
- Fire History
- BLM
- Indian Lands
- Private
- State
- USFS



OPERATIONS

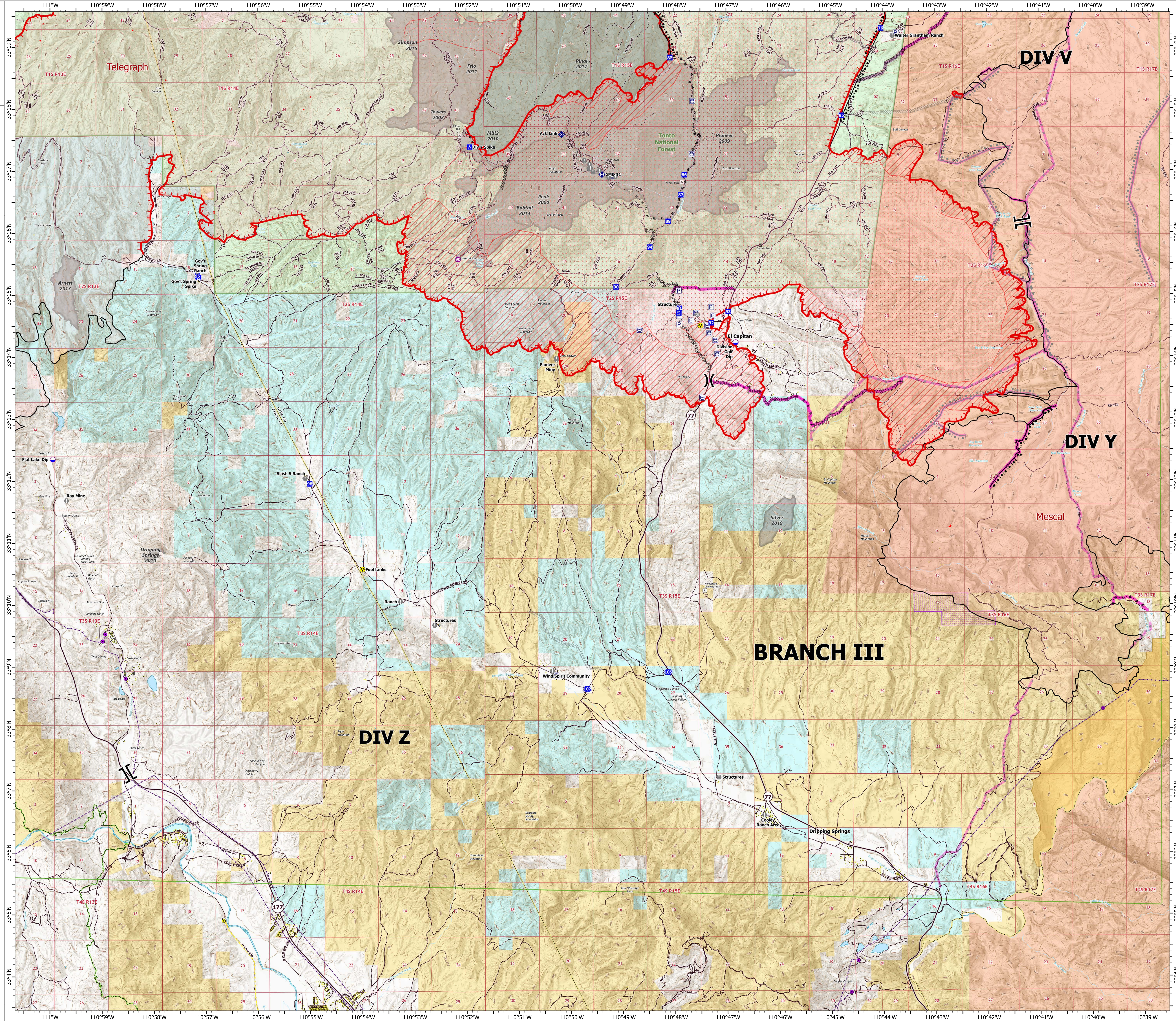
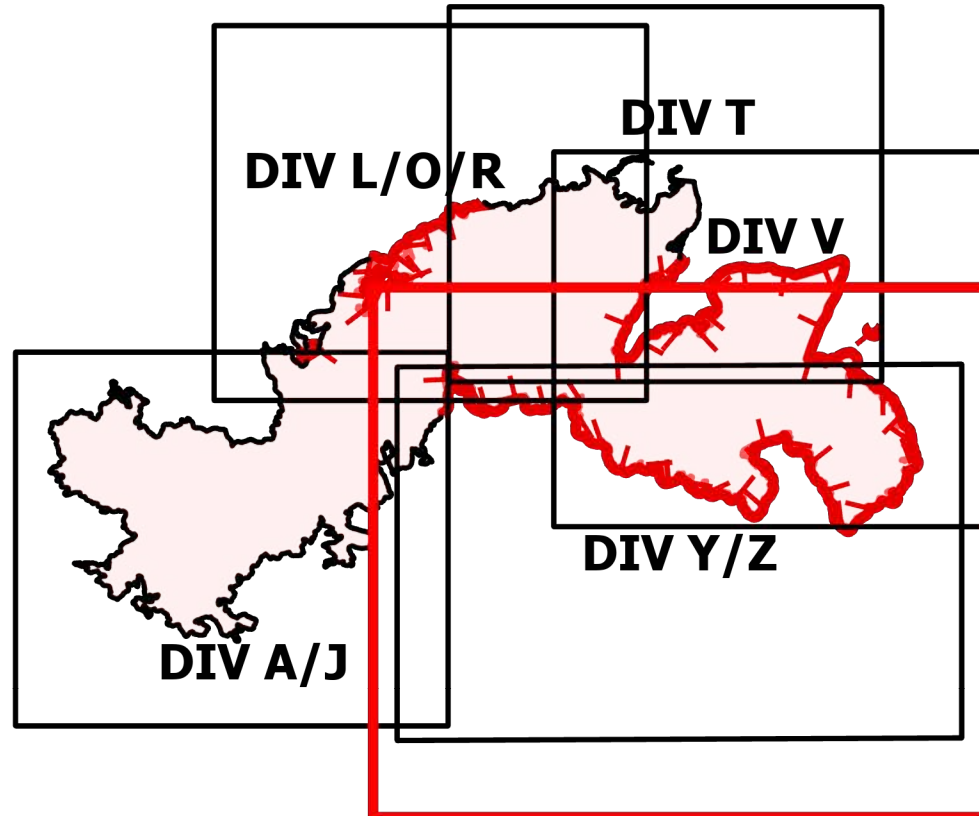
DIV Y/Z

Telegraph

AZ-TNF-1255

6/15/2021

123,078 acres at 6/14/2021 2116 hrs



- Structure
- Substations
- Gas Facility
- ▲ Campground
- ▲ Recreation Residence
- ▲ Other
- ⊠ Trailhead
- Dip Site
- Helispot
- ⊠ Division Break
- ⊠ Branch Break
- ⊠ Drop Point
- ⊠ Camp
- ⊠ Staging Area
- ⊠ Value at Risk
- ⊠ Gate
- ⊠ Bridge
- ⊠ Mobile Weather Unit
- ⊠ Repeater
- ⊠ Hazard
- ⊠ Pump
- ⊠ Water Tank
- ⊠ IR Isolated Heat Source
- ⊠ Completed Burnout
- ⊠ Completed Dozer Line
- ⊠ H Completed Hand Line
- ⊠ M Completed Mixed Construction Line
- ⊠ R Completed Road as Line
- ⊠ Planned Dozer Line
- ⊠ Planned Road as Line
- ⊠ Fire Edge
- ⊠ Contained Line
- Mescal Fire Operational Lines
 - ⊠ Completed Burnout
 - ⊠ Completed Dozer Line
 - ⊠ Completed Hand Line
 - ⊠ Completed Mixed Construction Line
 - ⊠ Planned Burnout
 - ⊠ Planned Dozer Line
 - ⊠ Planned Mixed Construction Line
 - ⊠ Planned Road as Line
 - ⊠ Area Covered by IR Flight
 - ⊠ IR Heat Perimeter
 - ⊠ IR Intense Heat
 - ⊠ IR Scattered Heat
 - ⊠ Wildfire Daily Fire Perimeter
- ⊠ Local Connecting Road
- ⊠ Local Road
- ⊠ Tonto National Forest Roads
- ⊠ Tonto National Forest Trails
- ⊠ Road
- ⊠ Trail
- ⊠ Arizona Trail
- ⊠ Transmission Lines
- ⊠ Gas Line
- ⊠ Oil and Natural Gas Pipelines
- ⊠ APS Distribution Overhead Infrastructure
- ⊠ Structure
- ⊠ USFS Boundary
- ⊠ County or Equivalent
- ⊠ BLM Area of Critical Environmental Concern
- ⊠ Wilderness Area Boundary
- ⊠ Federal Land within Wilderness Area
- ⊠ Township/Range
- ⊠ Section
- ⊠ Fire History
 - ⊠ BLM
 - ⊠ BR
 - ⊠ Indian Lands
 - ⊠ Private
 - ⊠ State
 - ⊠ USFS

