

OPERATIONS

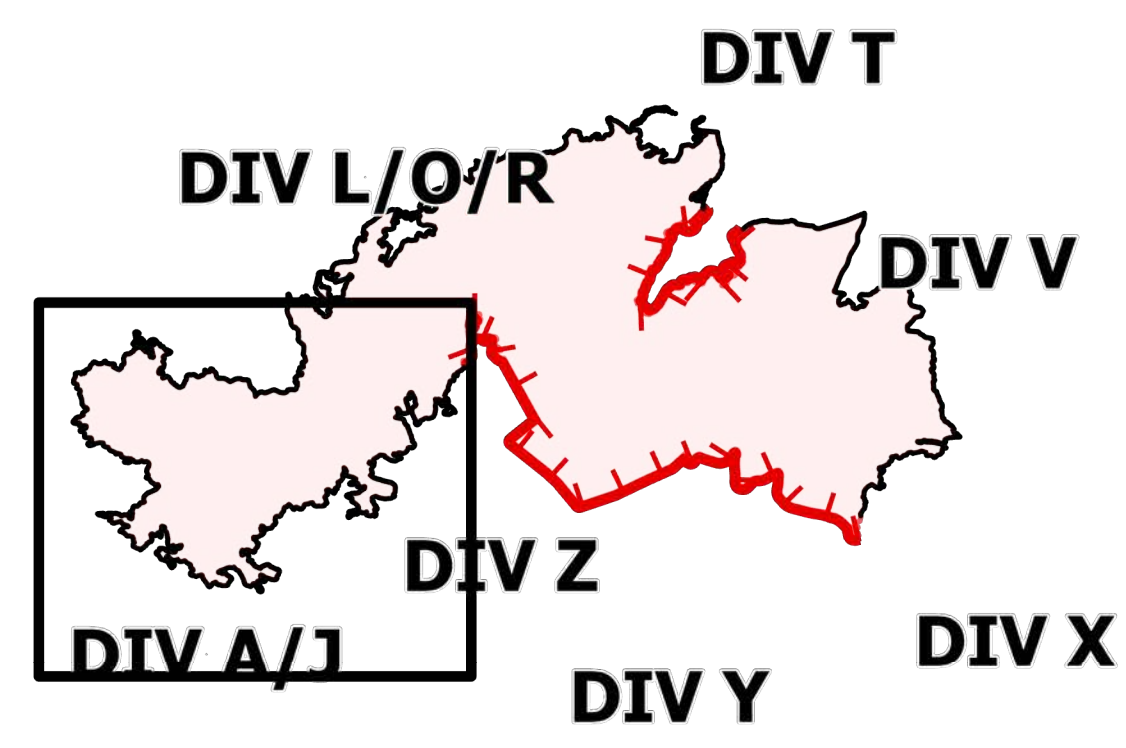
DIV A/J

Telegraph

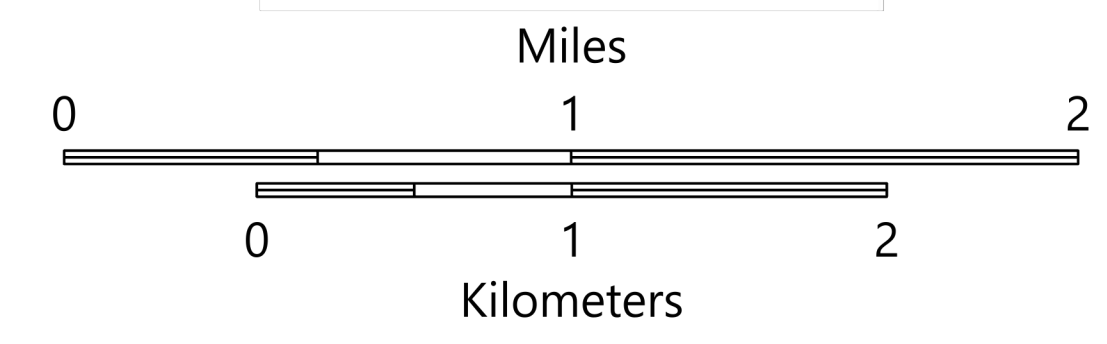
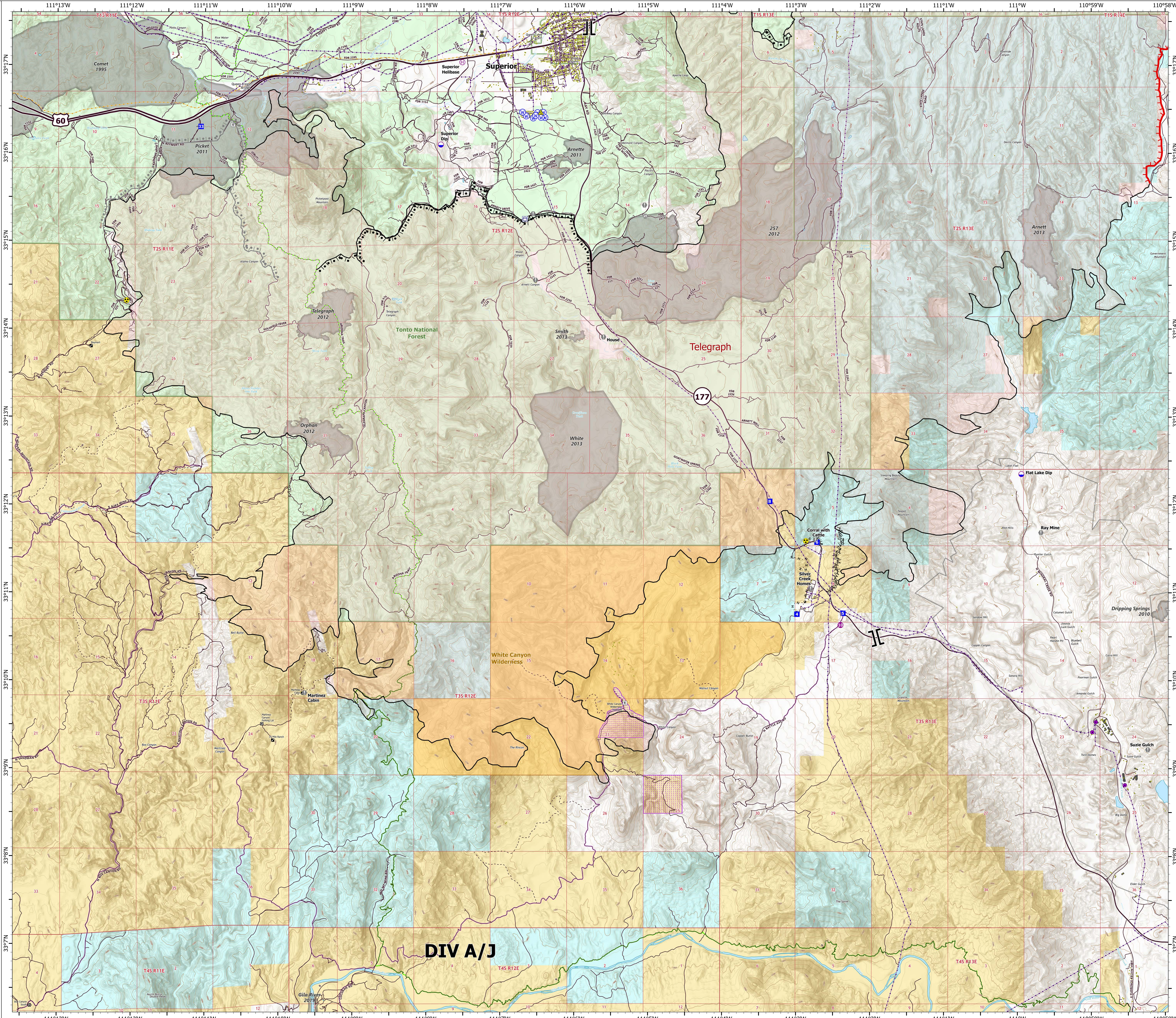
AZ-TNF-1255

6/16/2021

148,299 acres at 6/15/2021 1930 hrs



- Structure
- Substations
- ⊠ Trailhead
- ⊠ BLM Planned Portal Sites
- ⊠ Point of Interest
- ⊠ Trailhead
- ⊠ Dip Site
- ⊠ Helispot
- ⊠ Helibase
- ⊠ Branch Break
- ⊠ Drop Point
- ⊠ Value at Risk
- ⊠ Gate
- ⊠ Safety Zone
- ⊠ Hazard
- ⊠ Water Source
- ⊠ Water Tank
- ⊠ Completed Burnout
- ⊠ Completed Fuel Break
- ⊠ Completed Hand Line
- ⊠ Planned Burnout
- Planned Road as Line
- Fire Edge
- Contained Line
- Other
- Wildfire Daily Fire Perimeter
- Highway or Major Connecting Road
- Local Connecting Road
- Local Road
- Tonto National Forest Roads
- Tonto National Forest Trails
- Road
- Trail
- Arizona Trail
- Middle Gila Access Route
- Transmission Lines
- Oil and Natural Gas Pipelines
- APS Distribution Overhead Infrastructure
- Structure
- USFS Boundary
- County or Equivalent
- BLM Area of Critical Environmental Concern
- Wilderness Area Boundary
- Federal Land within Wilderness Area
- Township/Range
- Section
- Fire History
- BLM
- BR
- Private
- State
- USFS



OPERATIONS

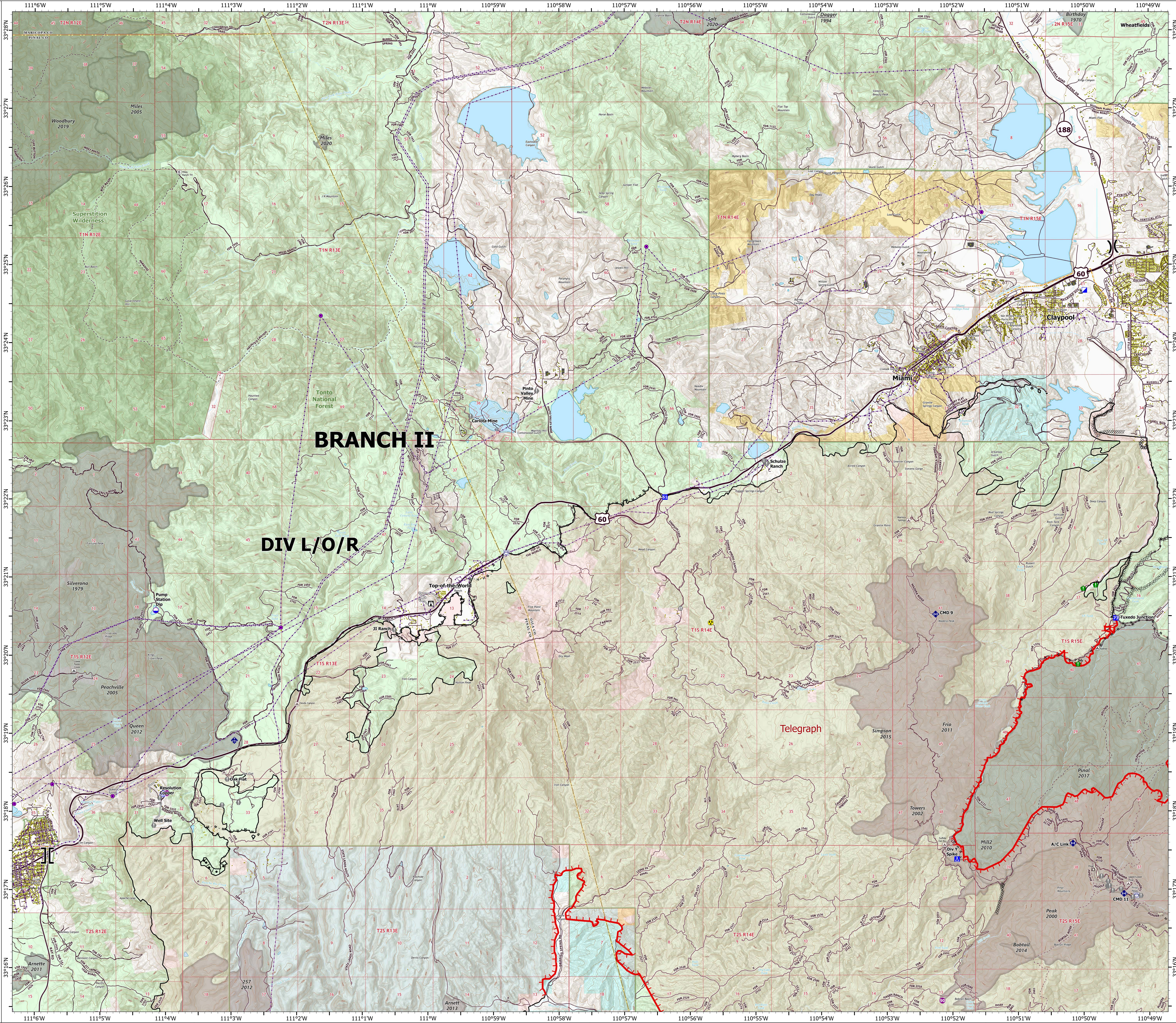
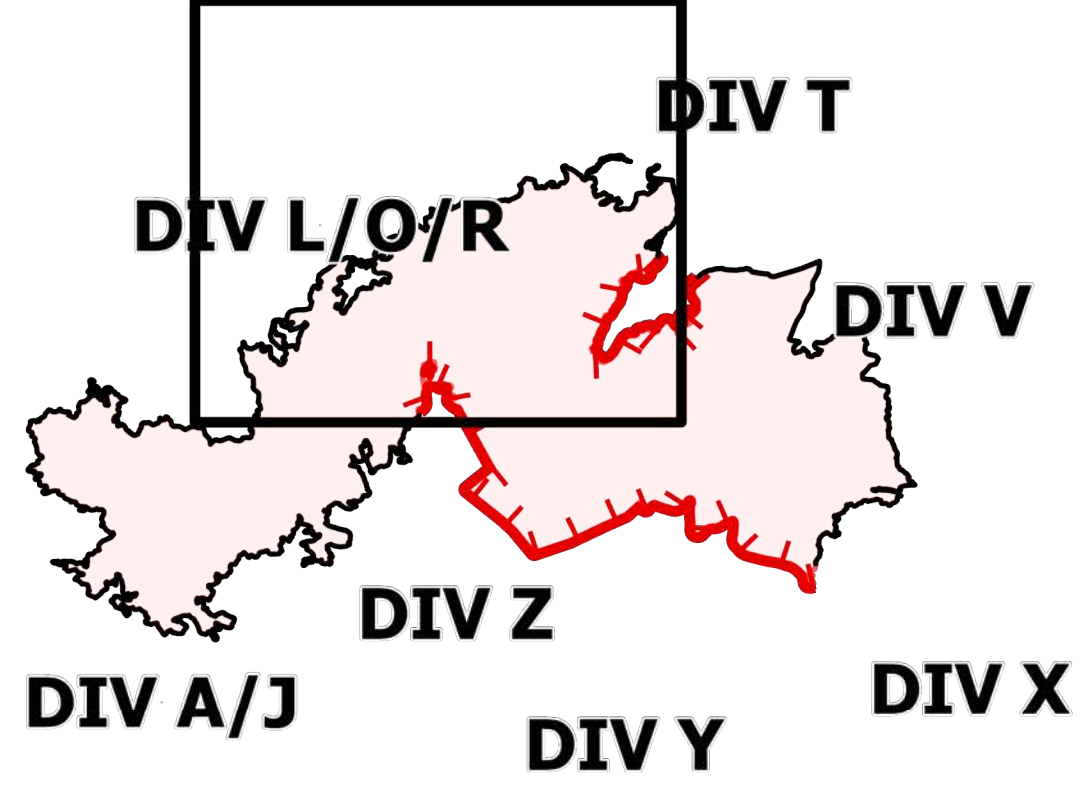
DIV L/O/R

Telegraph

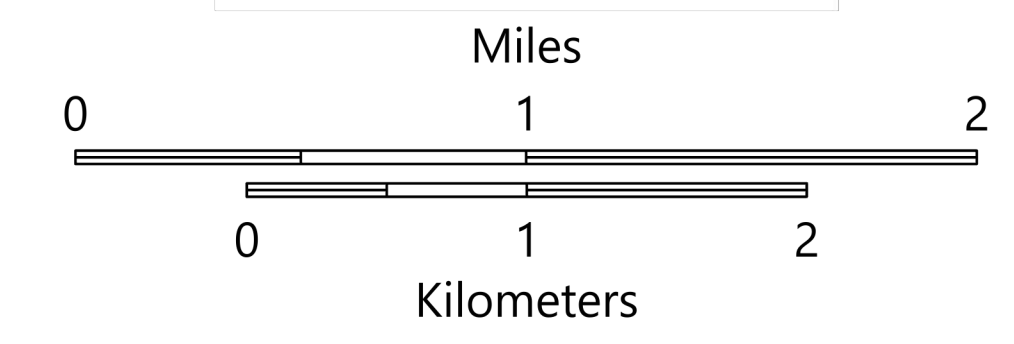
AZ-TNF-1255

6/16/2021

148,299 acres at 6/15/2021 1930 hrs



- Structure
- Substations
- ▲ Campground
- ▲ Recreation Residence
- ▲ Trailhead
- Dip Site
- Helispot
- ⌋ Division Break
- ⌋ Branch Break
- ▲ Incident Command Post
- ▲ Drop Point
- ▲ Camp
- ▲ Lookout
- Value at Risk
- Landmark
- Gate
- Bridge
- Resource Location
- Mobile Weather Unit
- Repeater
- Safety Zone
- Hazard
- Water Source
- Water Tank
- Completed Burnout
- Completed Dozer Line
- Completed Hand Line
- Completed Mixed Construction Line
- Completed Road as Line
- Planned Road as Line
- Planned Secondary Line
- Access or Improved Road
- Fire Edge
- Contained Line
- Wildfire Daily Fire Perimeter
- Highway or Major Connecting Road
- Local Connecting Road
- Local Road
- Tonto National Forest Roads
- Tonto National Forest Trails
- Road
- Transmission Lines
- Oil and Natural Gas Pipelines
- APS Distribution Overhead Infrastructure
- Structure
- USFS Boundary
- County or Equivalent
- Township/Range
- Section
- Fire History
- USFS Wilderness Area
- BLM
- Private
- State
- USFS



OPERATIONS

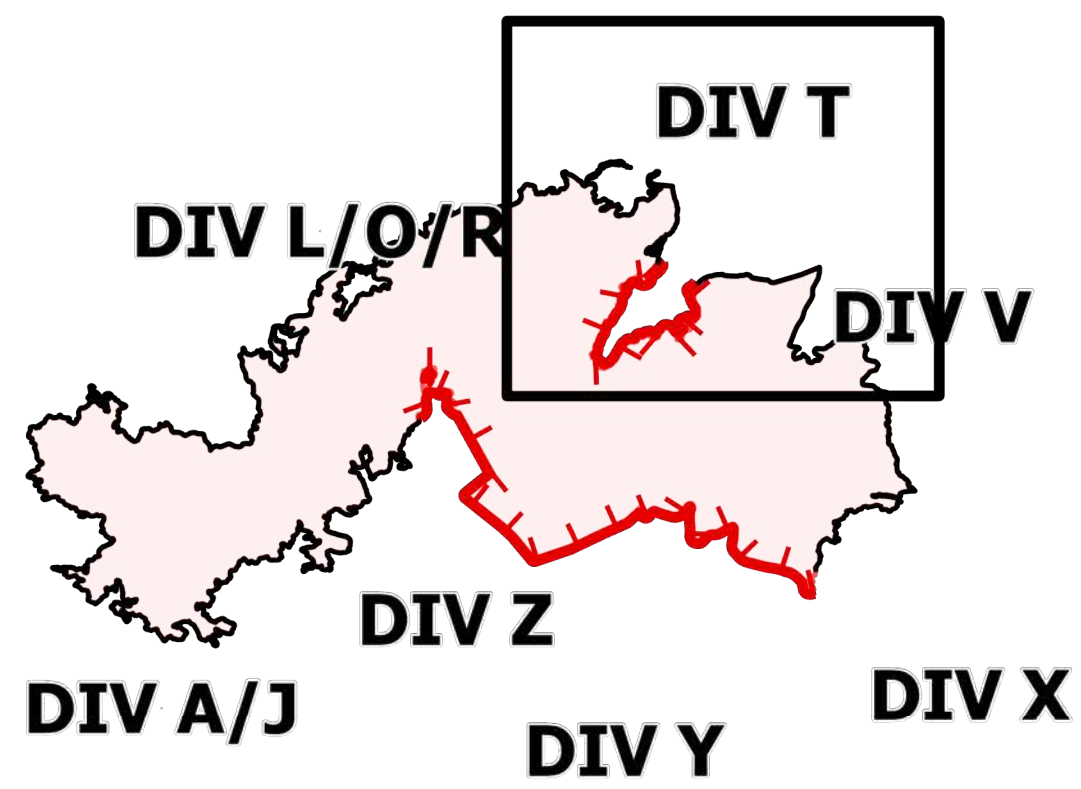
DIV T

Telegraph

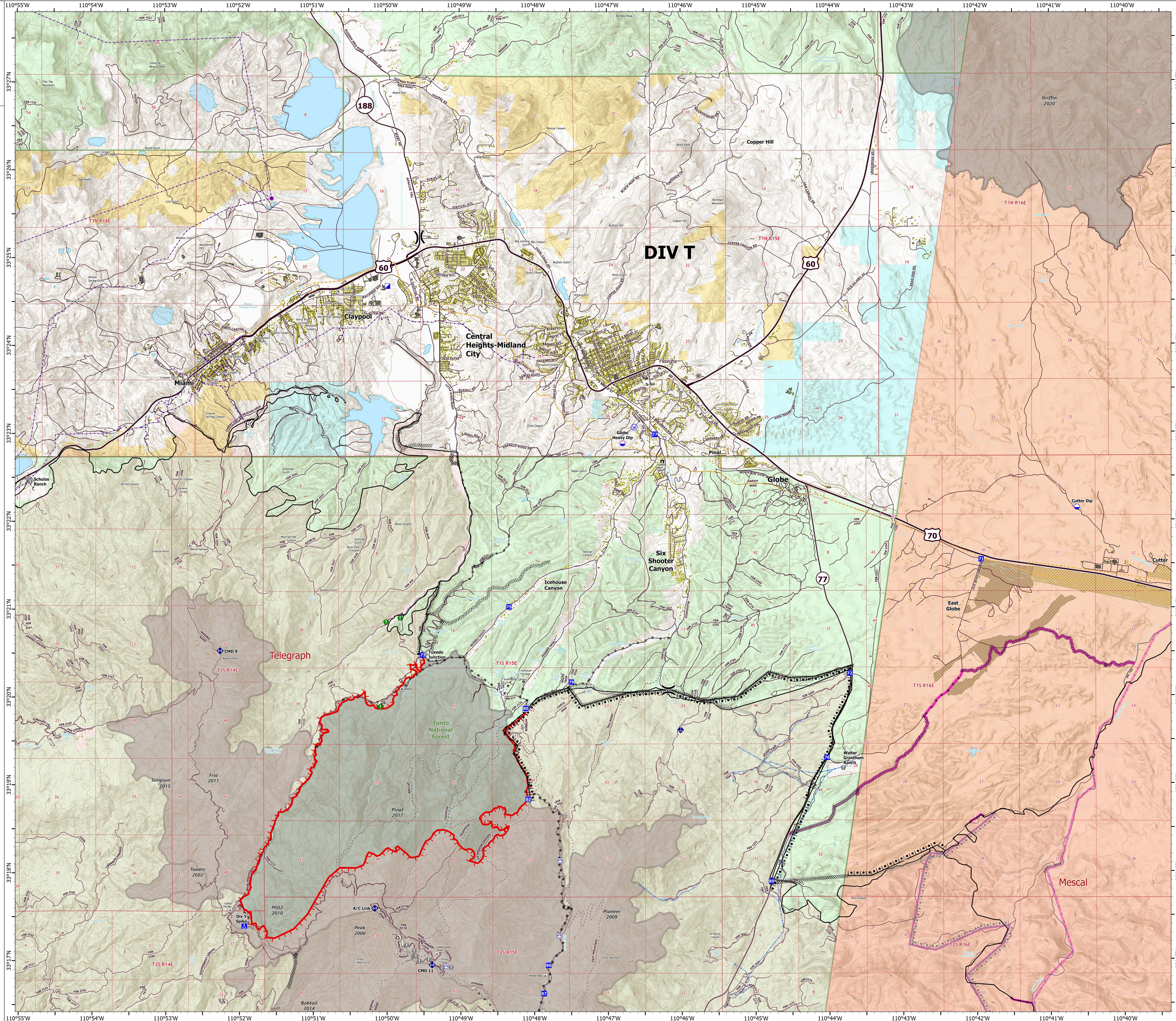
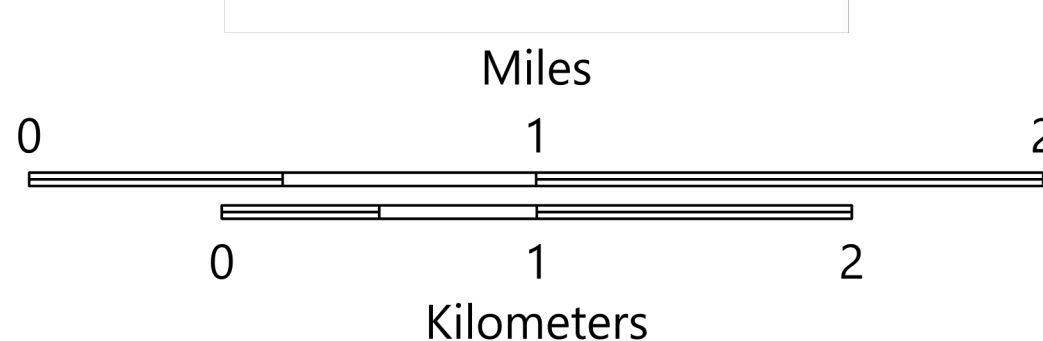
AZ-TNF-1255

6/16/2021

148,299 acres at 6/15/2021 1930 hrs



- Structure
- Substations
- ▲ Campground
- ▲ District Office
- ▲ Recreation Residence
- ▲ Trailhead
- Dip Site
- ▲ Division Break
- ▲ Incident Command Post
- ▲ Drop Point
- ▲ Camp
- Value at Risk
- Landmark
- Bridge
- Resource Location
- Mobile Weather Unit
- Repeater
- Water Source
- Range VAR Point
- ▲ Pump
- ▲ Water Tank
- ▲ Completed Burnout
- ▲ Completed Dozer Line
- ▲ Completed Hand Line
- ▲ Completed Mixed Construction Line
- ▲ Completed Road as Line
- ▲ Planned Dozer Line
- ▲ Planned Road as Line
- ▲ Fire Edge
- ▲ Contained Line
- ▲ Mescal Fire Operational Lines
- ▲ Completed Dozer Line
- ▲ Completed Hand Line
- ▲ Completed Road as Line
- ▲ Planned Burnout
- ▲ Planned Dozer Line
- ▲ Planned Road as Line
- ▲ Wildfire Daily Fire Perimeter
- ▲ Highway or Major Connecting Road
- ▲ Local Connecting Road
- ▲ Local Road
- ▲ Tonto National Forest Roads
- ▲ Tonto National Forest Trails
- ▲ Road
- ▲ Transmission Lines
- ▲ Oil and Natural Gas Pipelines
- ▲ Range VAR Line
- ▲ APS Distribution Overhead Infrastructure
- ▲ Structure
- ▲ USFS Boundary
- ▲ County or Equivalent
- ▲ Township/Range
- ▲ Section
- ▲ Fire History
- ▲ BLM
- ▲ Indian Lands
- ▲ Private
- ▲ State
- ▲ USFS
- ▲ 2021 San Carlos Fuels Treatment - Mechanical
- ▲ 2021 San Carlos Fuels Treatment - Rx Burn

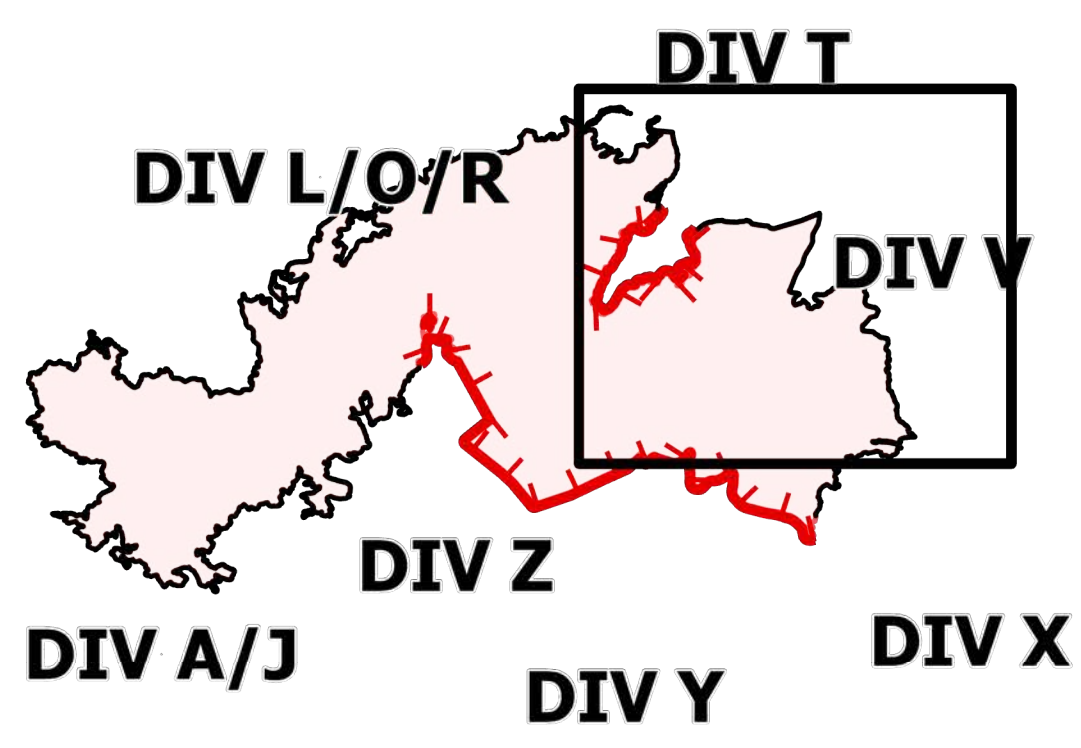


OPERATIONS

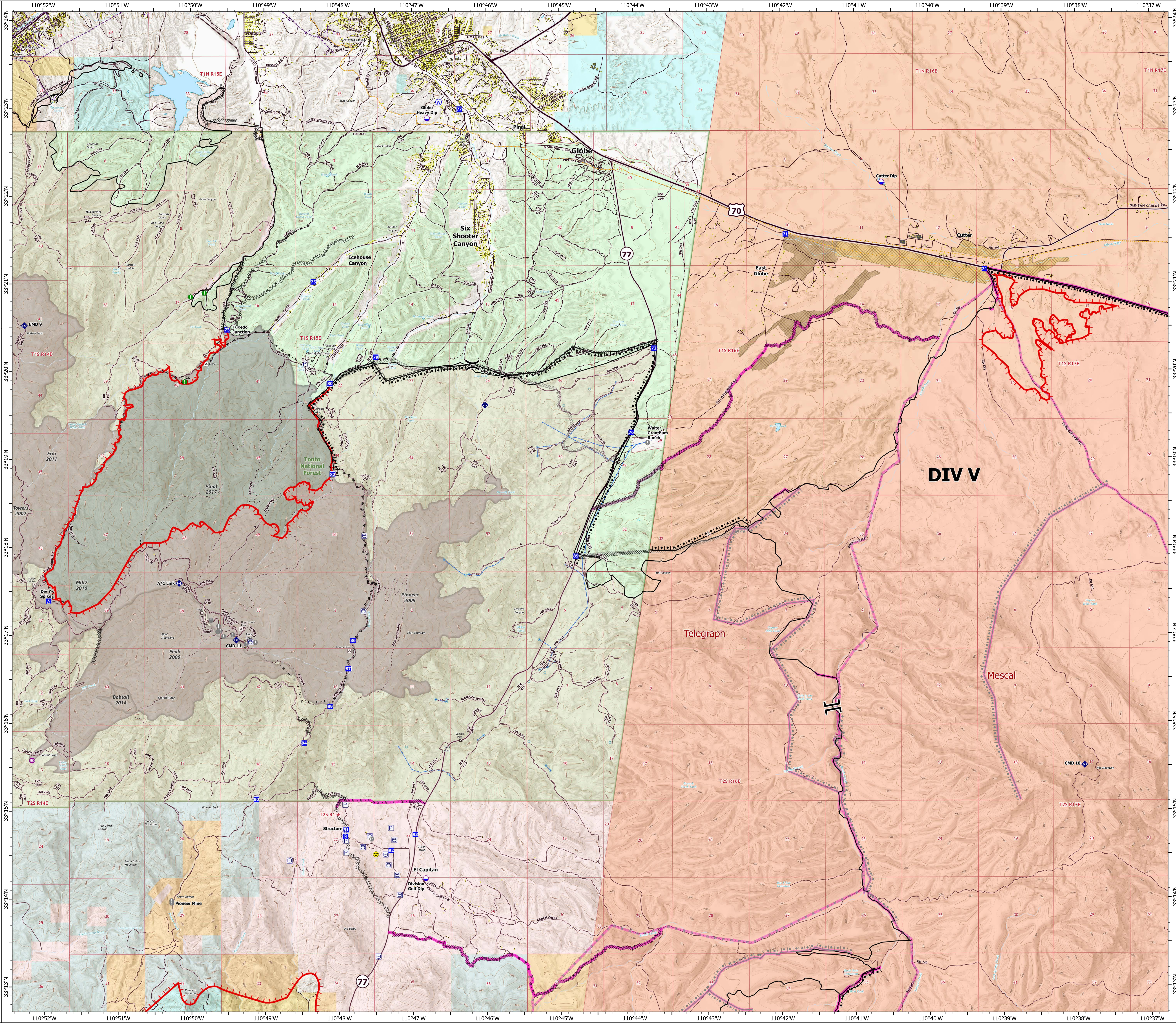
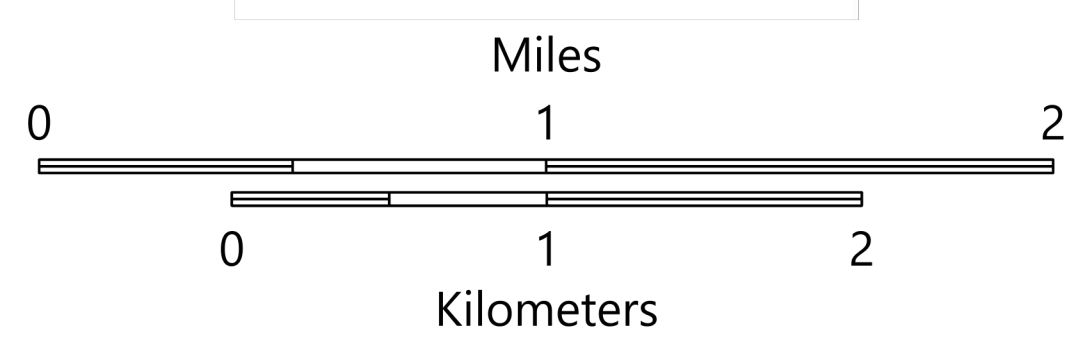
DIV V

Telegraph
AZ-TNF-1255
6/16/2021

148,299 acres at 6/15/2021 1930 hrs



- Structure
- ▲ Campground
- District Office
- Recreation Residence
- Trailhead
- Other
- Dip Site
- Helipad
- × Division Break
- ┆ Branch Break
- ┆ Drop Point
- Camp
- Staging Area
- Value at Risk
- Landmark
- Gate
- Bridge
- Resource Location
- Mobile Weather Unit
- Repeater
- Hazard
- Water Source
- Range VAR Point
- Pump
- Water Tank
- ▬ Completed Burnout
- ▬ Completed Dozer Line
- ▬ Completed Hand Line
- ▬ Completed Mixed Construction Line
- ▬ Completed Road as Line
- ▬ Planned Dozer Line
- ▬ Planned Road as Line
- ▬ Fire Edge
- ▬ Contained Line
- ▬ Mescal Fire Operational Lines
- ▬ Completed Burnout
- ▬ Completed Dozer Line
- ▬ Completed Hand Line
- ▬ Completed Road as Line
- ▬ Planned Burnout
- ▬ Planned Dozer Line
- ▬ Planned Mixed Construction Line
- ▬ Planned Road as Line
- ▬ Wildfire Daily Fire Perimeter
- ▬ Highway or Major Connecting Road
- ▬ Local Connecting Road
- ▬ Local Road
- ▬ Tonto National Forest Roads
- ▬ Tonto National Forest Trails
- ▬ Road
- ▬ Oil and Natural Gas Pipelines
- ▬ Range VAR Line
- ▬ APS Distribution Overhead Infrastructure
- ▬ Structure
- ▬ USFS Boundary
- ▬ County or Equivalent
- ▬ Township/Range
- ▬ Section
- ▬ Fire History
- ▬ BLM
- ▬ Indian Lands
- ▬ Private
- ▬ State
- ▬ USFS
- ▬ 2021 San Carlos Fuels Treatment - Mechanical
- ▬ 2021 San Carlos Fuels Treatment - Rx Burn



OPERATIONS

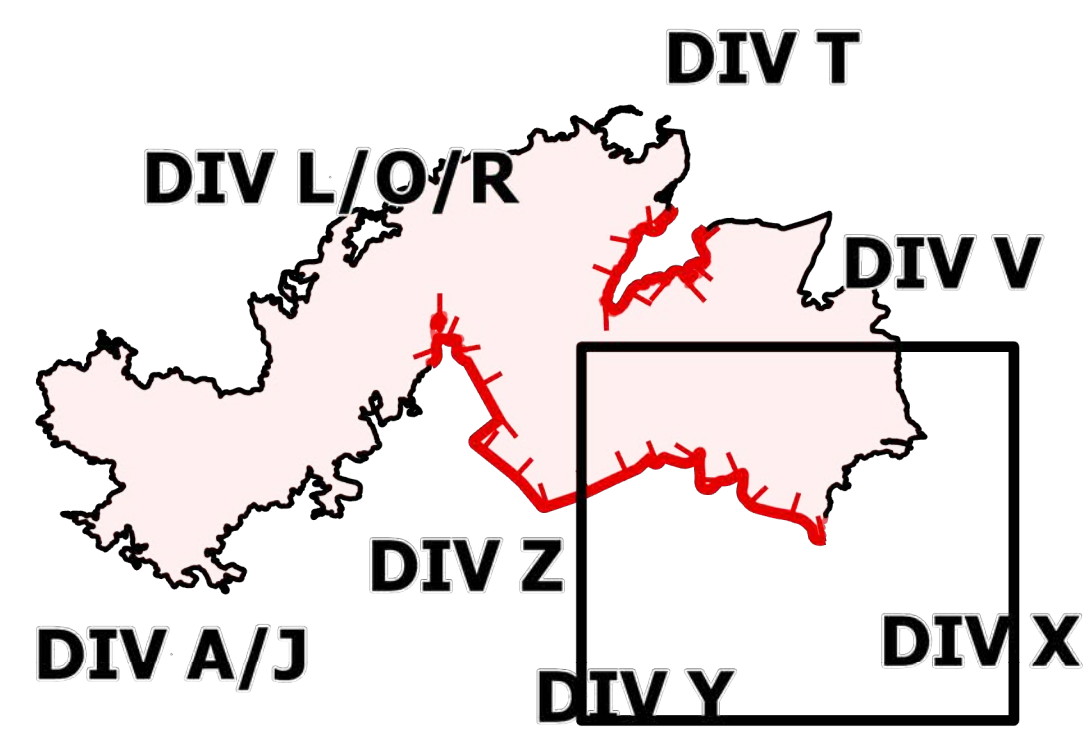
DIV X

Telegraph

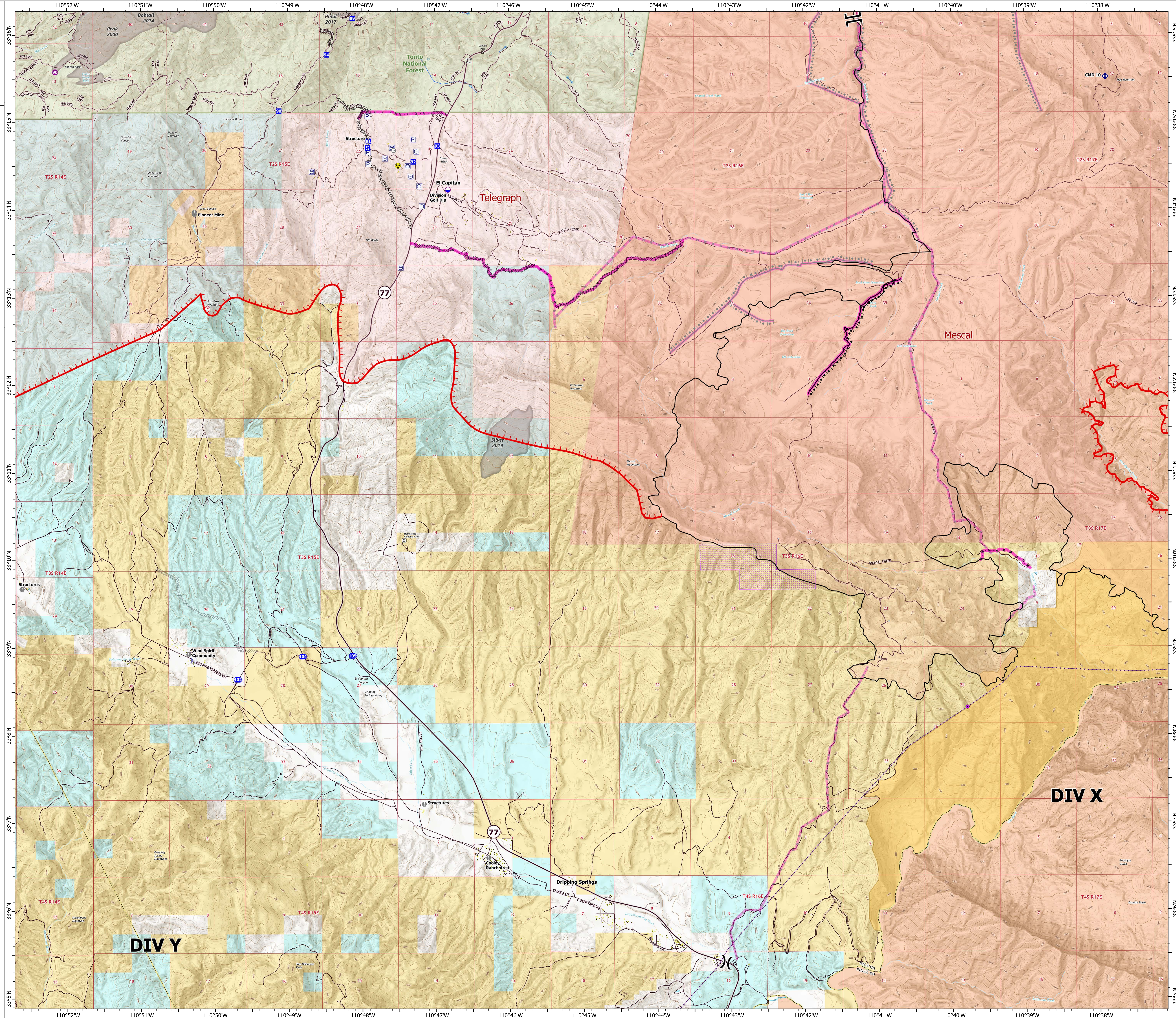
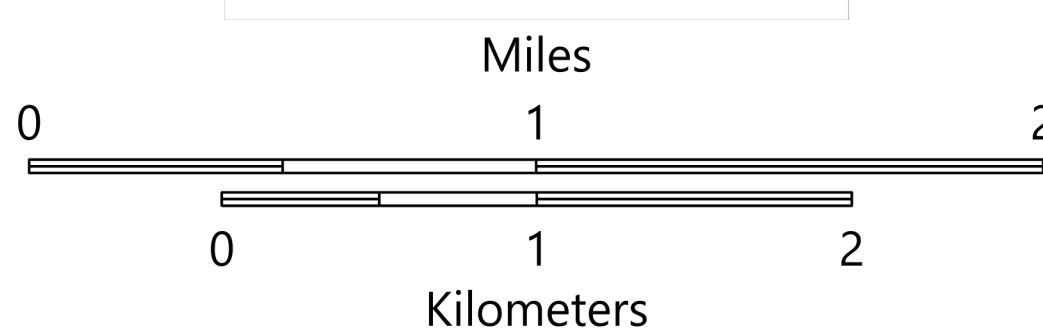
AZ-TNF-1255

6/16/2021

148,299 acres at 6/15/2021 1930 hrs



- Structure
- Substations
- Other
- ⊗ Trailhead
- Dip Site
- Helispot
- ⊗ Division Break
- ⊗ Branch Break
- Drop Point
- ⊗ Staging Area
- Value at Risk
- Gate
- Repeater
- Hazard
- Range VAR Point
- Pump
- Water Tank
- ⊗ Completed Dozer Line
- ⊗ Completed Hand Line
- ⊗ Completed Mixed Construction Line
- ⊗ Completed Road as Line
- ⊗ Planned Dozer Line
- ⊗ Fire Edge
- ⊗ Contained Line
- Mescal Fire Operational Lines
- ⊗ Completed Burnout
- ⊗ Completed Dozer Line
- ⊗ Completed Hand Line
- ⊗ Completed Mixed Construction Line
- ⊗ Completed Road as Line
- ⊗ Planned Burnout
- ⊗ Planned Mixed Construction Line
- ⊗ Planned Road as Line
- ⊗ Wildfire Daily Fire Perimeter
- ⊗ Local Connecting Road
- ⊗ Local Road
- ⊗ Tonto National Forest Roads
- ⊗ Tonto National Forest Trails
- ⊗ Road
- ⊗ Transmission Lines
- ⊗ Range VAR Line
- ⊗ Structure
- ⊗ USFS Boundary
- ⊗ County or Equivalent
- ⊗ BLM Area of Critical Environmental Concern
- ⊗ Wilderness Area Boundary
- ⊗ Federal Land within Wilderness Area
- ⊗ Township/Range
- ⊗ Section
- ⊗ Fire History
- ⊗ BLM
- ⊗ Indian Lands
- ⊗ Private
- ⊗ State
- ⊗ USFS



OPERATIONS

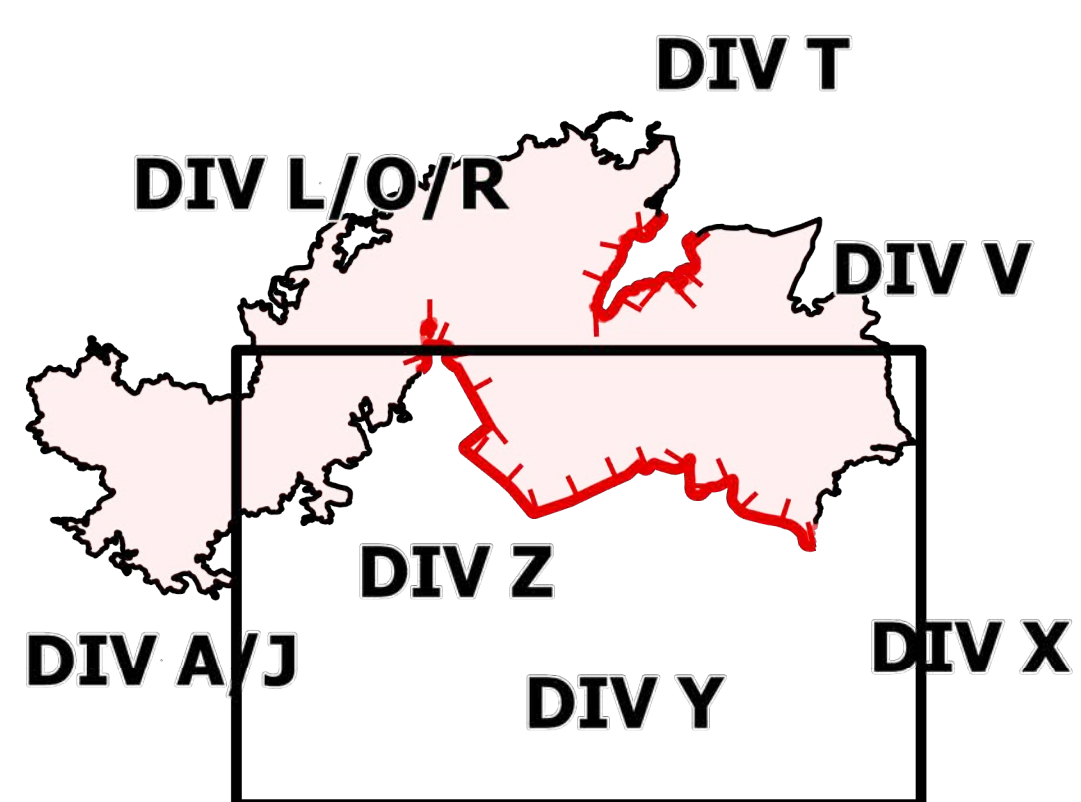
DIV Y/Z

Telegraph

AZ-TNF-1255

6/16/2021

148,299 acres at 6/15/2021 1930 hrs



- Structure
- Substations
- Gas Facility
- Other
- Trailhead
- BLM Planned Portal Sites
- Dip Site
- Helispot
- Division Break
- Branch Break
- Drop Point
- Camp
- Staging Area
- Value at Risk
- Gate
- Hazard
- Water Source
- Pump
- Water Tank
- Completed Dozer Line
- MW Completed Fuel Break
- H - H Completed Hand Line
- M - M Completed Mixed Construction Line
- R - R Completed Road as Line
- Planned Dozer Line
- Planned Road as Line
- Fire Edge
- Contained Line
- Mescal Fire Operational Lines
- Completed Burnout
- Completed Dozer Line
- Completed Hand Line
- Completed Road as Line
- Planned Burnout
- Planned Mixed Construction Line
- Planned Road as Line
- Other
- Wildfire Daily Fire Perimeter
- Local Connecting Road
- Local Road
- Tonto National Forest Roads
- Tonto National Forest Trails
- Road
- Trail
- Arizona Trail
- Middle Gila Access Route
- Transmission Lines
- Gas Line
- Oil and Natural Gas Pipelines
- APS Distribution Overhead Infrastructure
- Structure
- USFS Boundary
- County or Equivalent
- BLM Area of Critical Environmental Concern
- Wilderness Area Boundary
- Federal Land within Wilderness Area
- Township/Range
- Section
- Fire History
- BLM
- BR
- Indian Lands
- Private
- State
- USFS

