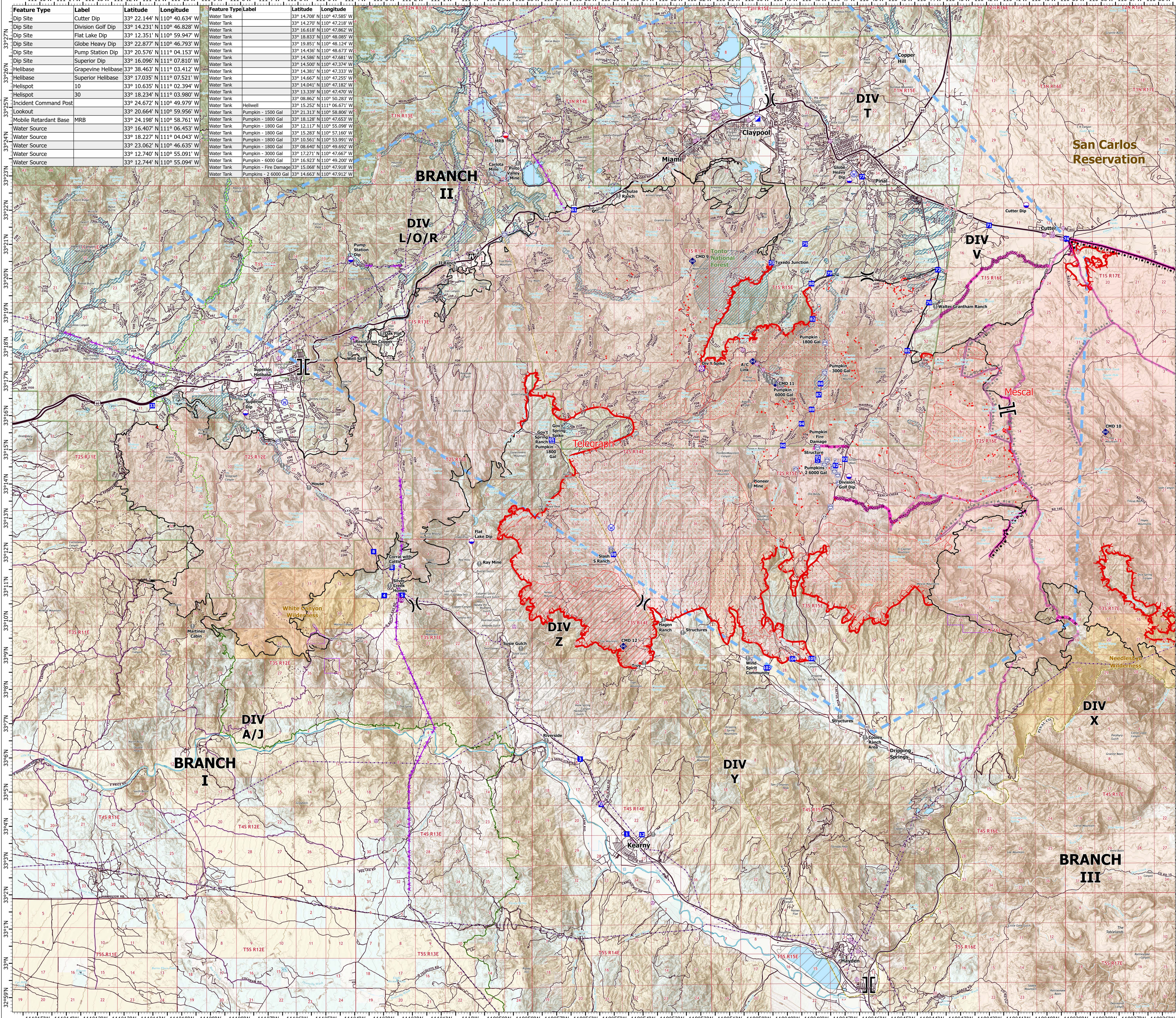


AIROPS

Telegraph
AZ-TNF-1255
6/17/2021

171,242 acres at 6/16/2021 2252 hrs



Feature Type	Label	Latitude	Longitude	Feature Type	Label	Latitude	Longitude
Dip Site	Cutter Dip	33° 22.144' N	110° 40.634' W	Water Tank		33° 14.708' N	110° 47.585' W
Dip Site	Division Golf Dip	33° 14.231' N	110° 46.828' W	Water Tank		33° 14.270' N	110° 47.218' W
Dip Site	Flat Lake Dip	33° 12.351' N	110° 59.947' W	Water Tank		33° 16.618' N	110° 47.862' W
Dip Site	Globe Heavy Dip	33° 22.877' N	110° 46.793' W	Water Tank		33° 18.833' N	110° 48.085' W
Dip Site	Pump Station Dip	33° 20.576' N	111° 04.153' W	Water Tank		33° 19.851' N	110° 48.124' W
Dip Site	Superior Dip	33° 16.096' N	111° 07.810' W	Water Tank		33° 14.436' N	110° 48.673' W
Helibase	Grapevine Helibase	33° 38.463' N	111° 03.412' W	Water Tank		33° 14.500' N	110° 47.374' W
Helibase	Superior Helibase	33° 17.035' N	111° 07.521' W	Water Tank		33° 14.381' N	110° 47.333' W
Helispot	10	33° 10.635' N	111° 02.394' W	Water Tank		33° 14.667' N	110° 47.255' W
Helispot	30	33° 18.234' N	111° 03.980' W	Water Tank		33° 14.041' N	110° 47.182' W
Incident Command Post		33° 24.672' N	111° 09.979' W	Water Tank		33° 13.339' N	110° 47.470' W
Lookout		33° 20.664' N	111° 09.956' W	Water Tank		33° 08.862' N	111° 00.283' W
Mobile Retardant Base	MRB	33° 24.198' N	111° 08.761' W	Water Tank		33° 15.252' N	111° 06.671' W
Water Source		33° 16.407' N	111° 06.453' W	Water Tank		33° 21.313' N	110° 58.806' W
Water Source		33° 18.227' N	111° 04.043' W	Water Tank		33° 18.128' N	110° 47.653' W
Water Source		33° 23.062' N	111° 04.635' W	Water Tank		33° 12.117' N	110° 55.098' W
Water Source		33° 12.740' N	111° 05.091' W	Water Tank		33° 15.283' N	110° 52.162' W
Water Source		33° 12.744' N	111° 05.094' W	Water Tank		33° 10.561' N	110° 53.991' W
				Water Tank		33° 08.640' N	110° 49.692' W
				Water Tank		33° 12.271' N	110° 47.667' W
				Water Tank		33° 07.923' N	110° 49.200' W
				Water Tank		33° 15.068' N	110° 47.918' W
				Water Tank		33° 14.663' N	110° 47.912' W

- Aerial Hazard
- Dip Site
- Mobile Retardant Base
- Helispot
- Helibase
- Division Break
- Branch Break
- Incident Command Post
- Drop Point
- Camp
- Staging Area
- Lookout
- Value at Risk
- Landmark
- Repeater
- Water Source
- Water Tank
- IR Isolated Heat Source
- Aerial Hazard
- Temporary Flight Restriction
- Fire Edge
- Contained Line
- Transmission Lines
- Mescal Fire Operational Lines
 - Completed Burnout
 - Completed Dozer Line
 - Completed Hand Line
 - Completed Mixed Construction Line
 - Completed Road as Line
 - Planned Burnout
 - Planned Dozer Line
 - Planned Mixed Construction Line
 - Planned Road as Line
- Fire Edge
- Contained Line
- Mine Footprint
- Wildfire Daily Fire Perimeter
- IR Heat Perimeter
- IR Intense Heat
- IR Scattered Heat
- Highway or Major Connecting Road
- Local Connecting Road
- Local Road
- Road
- Trail
- Arizona Trail
- Middle Gila Access Route
- County or Equivalent
- Township/Range
- Section
- BLM
- BR
- Indian Lands
- Private
- State
- USFS
- USFS Wilderness Area
- Wilderness Area Boundary
- Federal Land within Wilderness Area
- BLM Area of Critical Environmental Concern
- USFS Boundary
- Retardant Avoidance

